

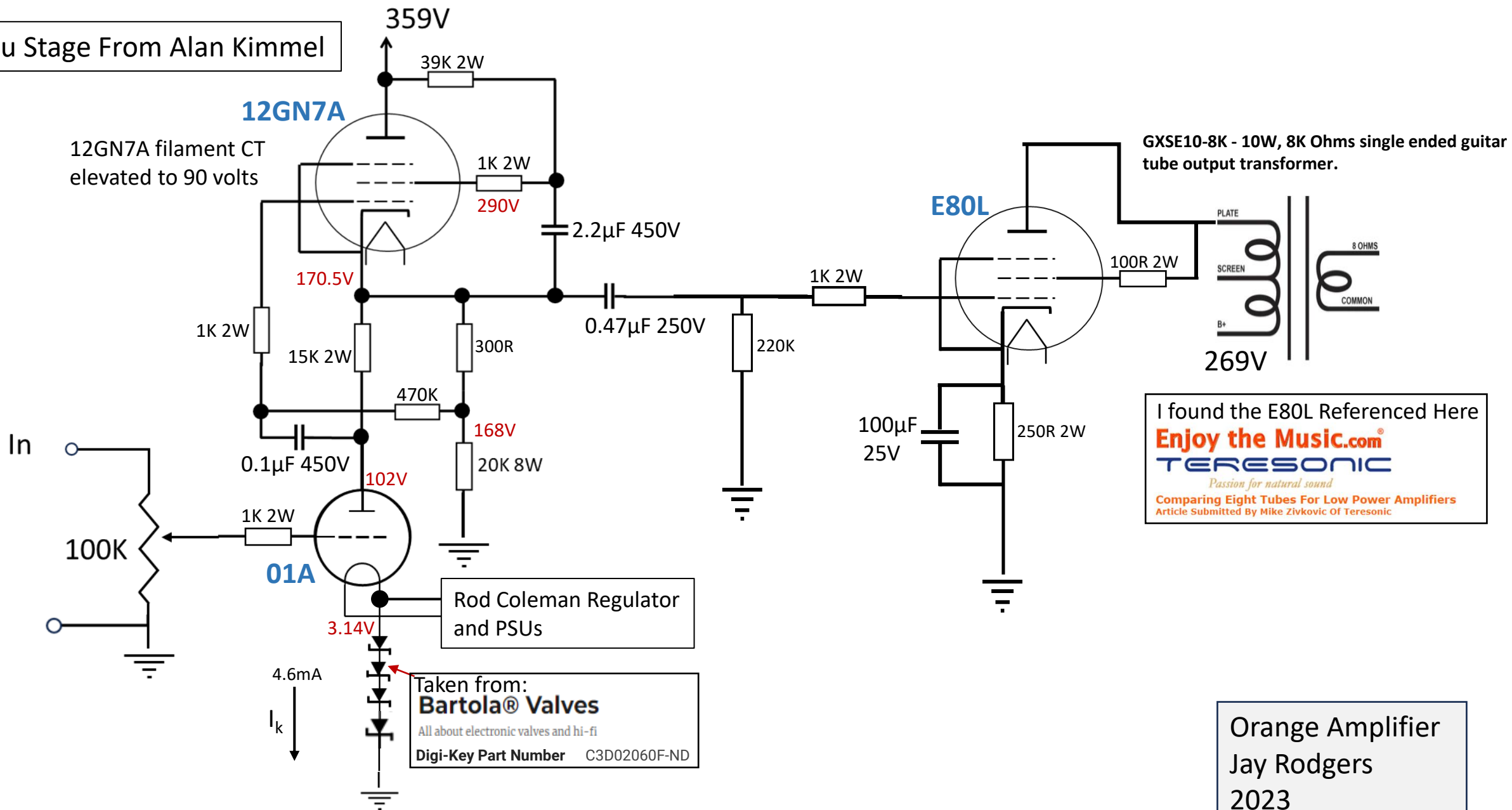
# Orange Amplifier Schematic

DHT Mu Follower Pre-section

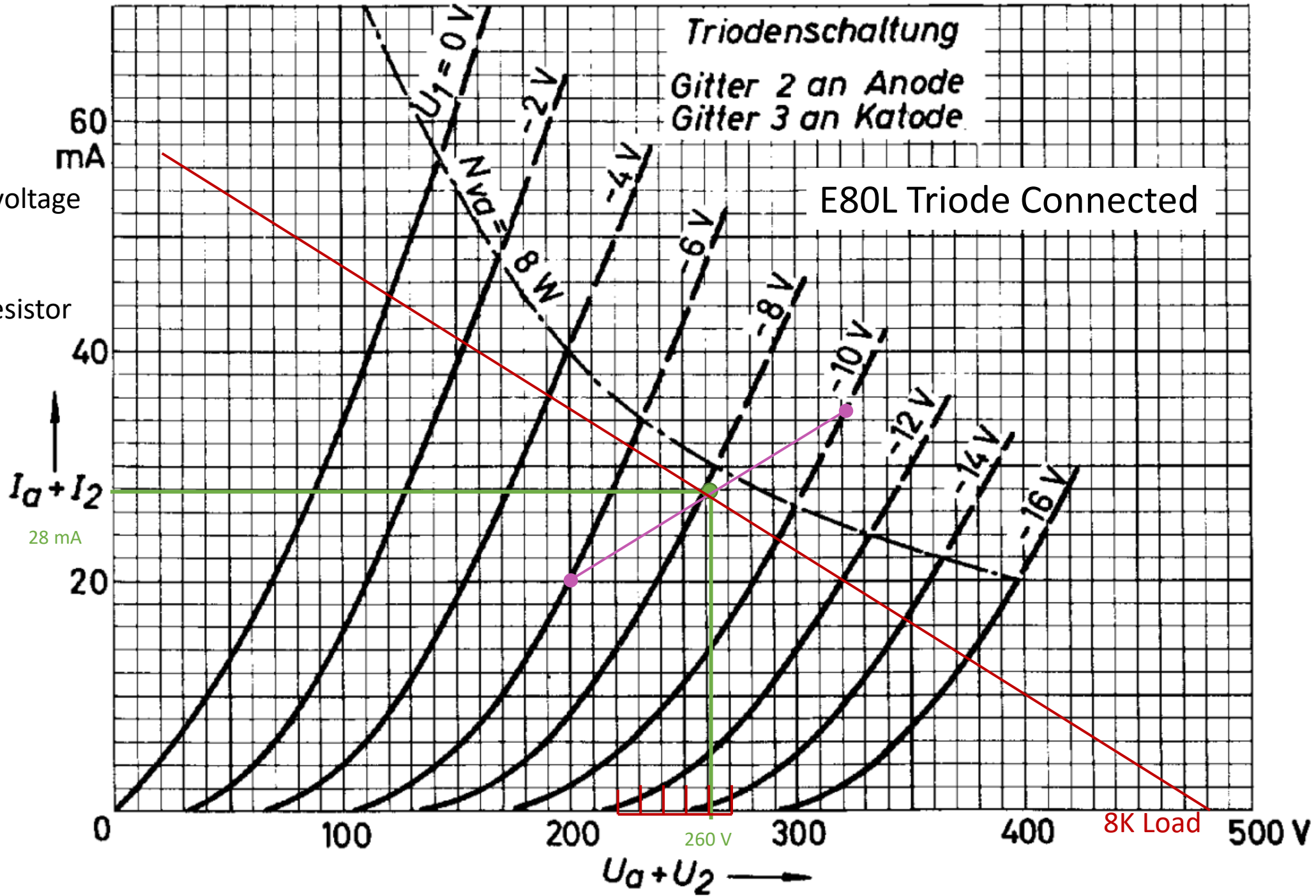
Triode Strapped E80L Output Section



## Mu Stage From Alan Kimmel



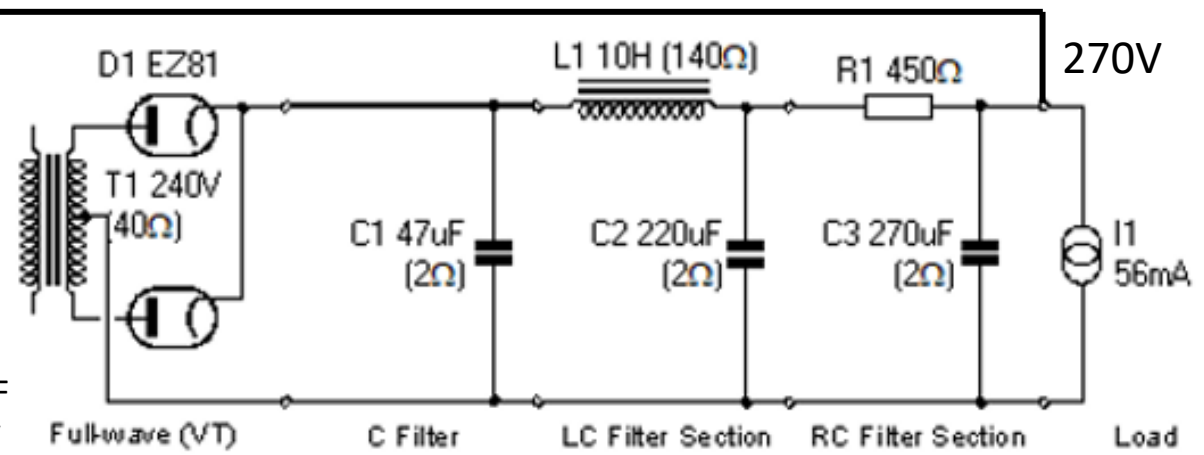
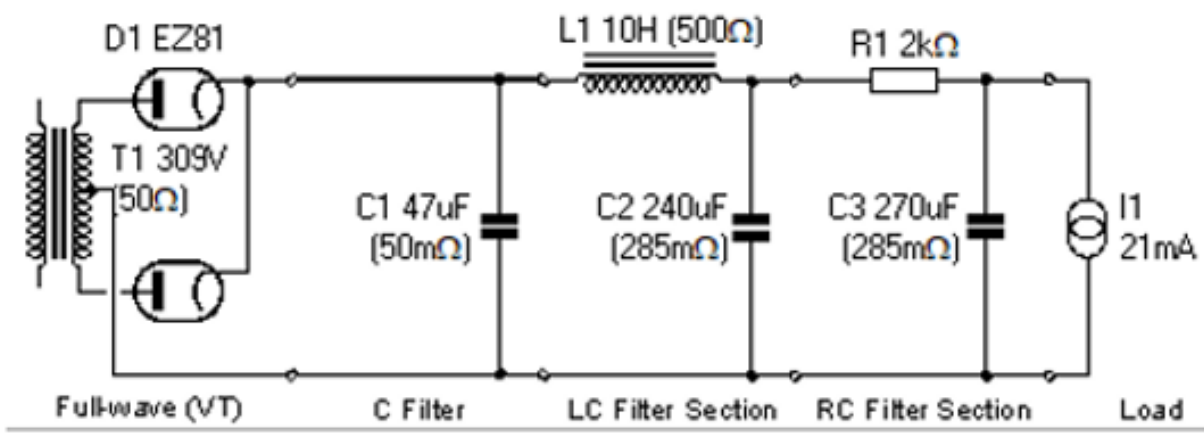
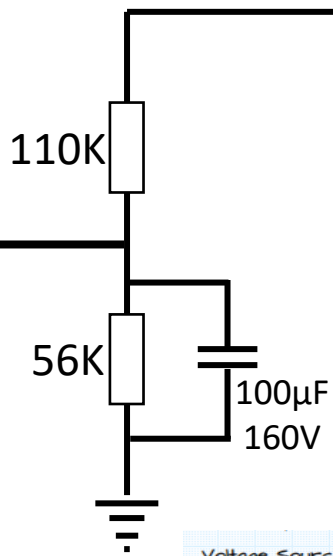
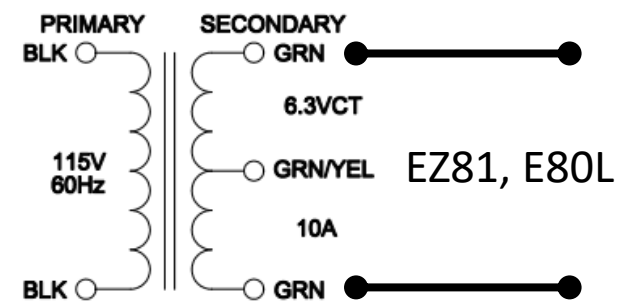
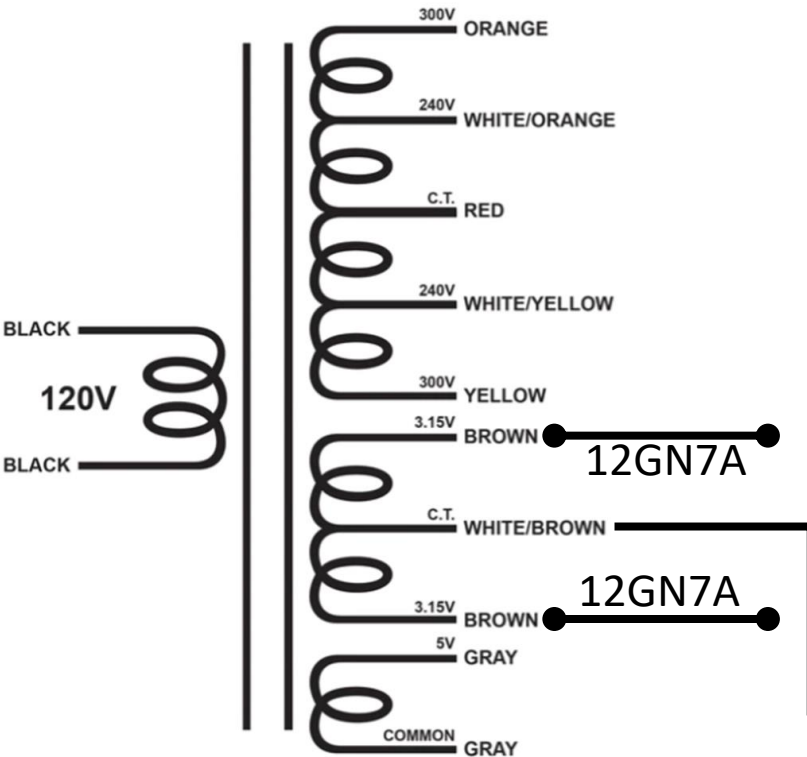
260 plate voltage  
-8 volt grid  
28mA OP  
Cathode resistor  
= 280  $\Omega$   $R_K$







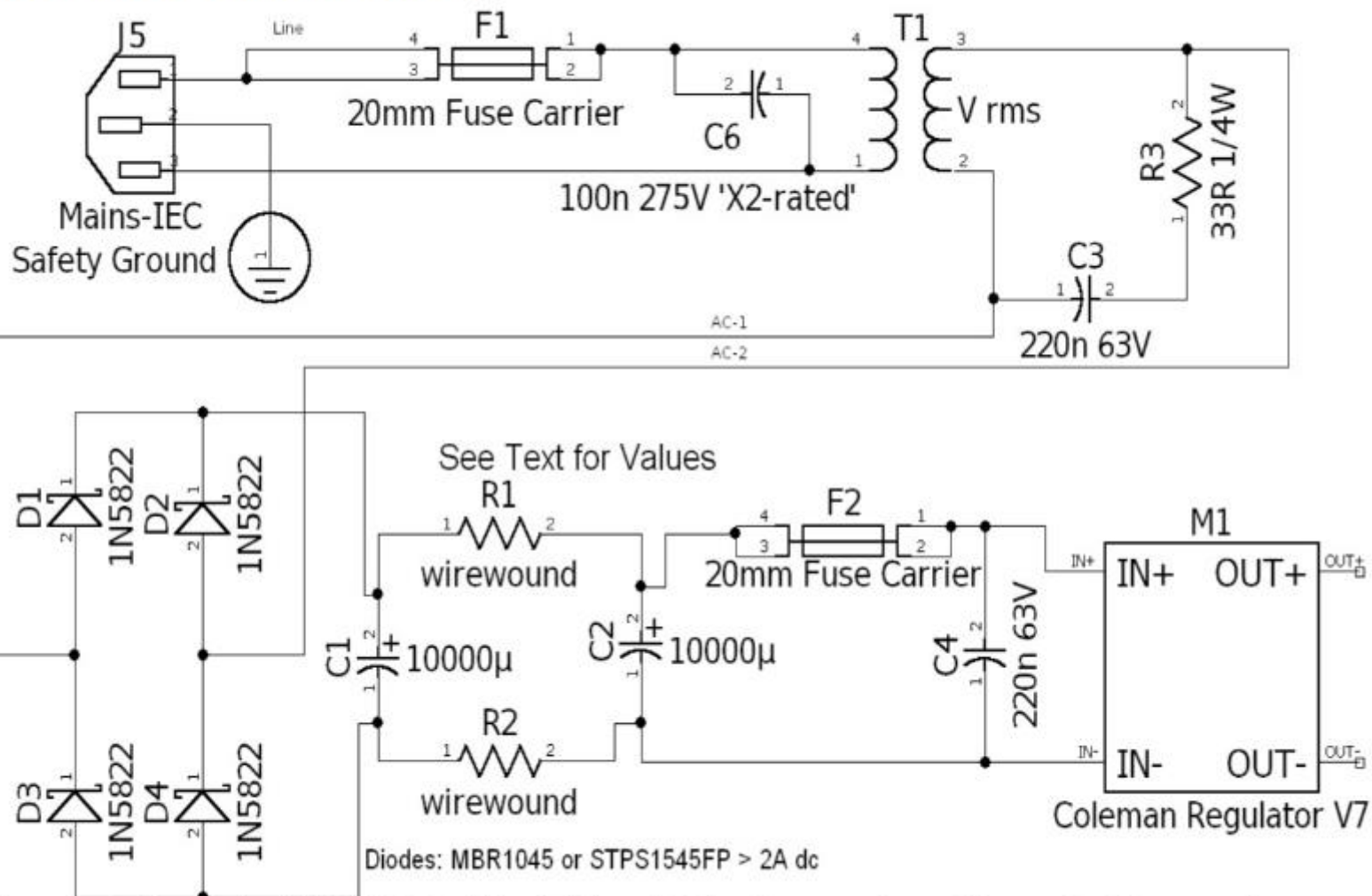
XPWR145 - 600V/480V@120mA CT,  
6.3V@3A CT, & 5V@2A



Voltage Source ( $V_s$ )	270
Resistance 1 ( $R_1$ )	110000
Resistance 2 ( $R_2$ )	56000
Output Voltage ( $V_{out}$ )	91.084

# Coleman Regulator - DHT Filament Regulator

## 2.10. Schematic of Raw dc Supply:



Filament Supply RAW DC Must Float! No Ground or Chassis Connexions.

