

Y.Aksan  
Peter Smith

Project: **Option 2**

	Offset	Diameter	Relief shortest side
Driver 1	0	5 1/3	1 3/32
Driver 2	0	0	
Driver 3	0	0	
Driver 4		0	

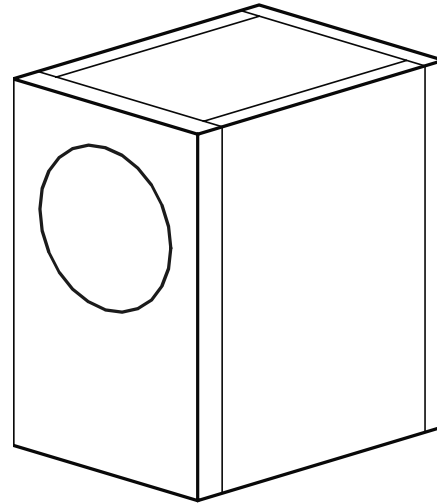
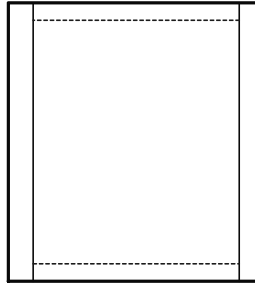
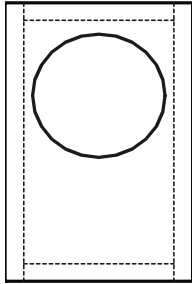
Material Density
0.753 gr/cm3
Total Box Weight
5.0 kg
11.0 Pounds

Bracing			
Width	Length	Depth	Qty/spkr
6	10 1/2	0.75	1 Full length
6	8 1/4	0.75	0 Shelf

Wall Thickness (Inches)			
Front	Rear	Top/Bottom	Sides
1	0.75	0.75	0.75

Outside Box Dimensions (Inches)			Internal Volume
Width	Height	Depth	
7 1/2	12	10	7.74 liters
Golden ratio >	19 4/8	12	0.27 cu.ft
Baffle Width in Hz	3.616		

Driver Height		Driver	Relief drv - drv	Acoustic Centers	Crossover Ideal	Listening Distance
Bottom	Top					
8	4	1	1 6/16			
		2				
		3				
		4				



Bill of Materials	For 2 Speakers			
	Width	Height	Thickness	Qty
Front/Rear Baffles	7 1/2	12	1	4
Side Panels	8 1/4	12	0.75	4
Top/Bottom Panels	8 1/4	6	0.75	4
Bracing	10 1/2	6	0.75	2
Total Sq.ft		7.5	(5x8 Sheet is 40sq ft - 60"x96")	

Qty X		
Short side	Long side	+ Kerfs
30	12	3/8
33	12	3/8
24	8 1/4	3/8
12	10 1/2	1/8

notes
Hand Calc Baffles!

Vertical Center Line	3 3/4
----------------------	-------

	from top	from bottom
Driver 1 center location	4	8
Driver 2 center location		
Driver 3 center location		

Offset

Hint: Build the top/bottom/sides as a box and let dry. Cut the baffles oversize by about 1/2 inch and glue on with overhand on all sides. Use a flush trim blade to bring the baffles square with the other panels.

	Width	Height	Depth
Inside dimensions	6	10 1/2	8 1/4