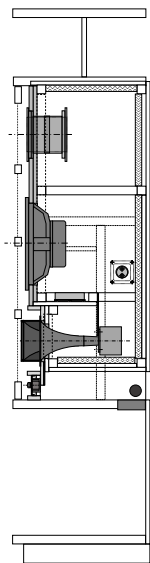
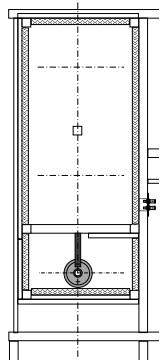


Vinewood Media Room Speaker Cabinet Modifications for Altec Model 19 Clones

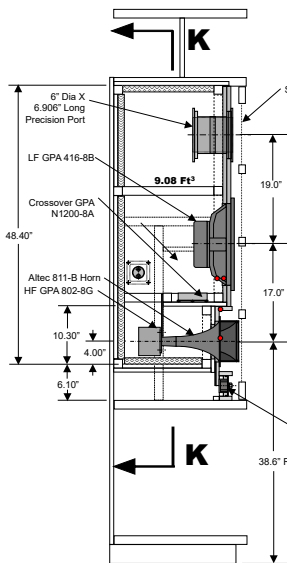
- NOTES:
1. All boards 0.74" Furniture Grade walnut or oak veneer plywood Or 0.71" Baltic Birch unless otherwise noted
 2. Calculated LF cabinet internal volume 10.134 Ft³ without subtracting internal components bracing and reinforcement
 3. G.P.A. recommended volume 8.8 Ft³, tuned to 29 Hz
 4. Estimated internal volume: 10.134 - 0.12 (416 LF) - 0.10 (6" PP) - 0.19 (Horn) - 0.026 (HF) - 0.05 (XO) - 0.575 (Est Bracing) = 9.08 Ft³ Note: Volume will be reduced down to required 8.8 Ft³ on final tuning
 5. Reference Internal Volumes: 416 LF: 0.120 Ft³ (Back Mount), 802 HF: 0.026 Ft³, 811-B Horn: 0.190 Ft³, Crossover 0.050 Ft³, 6" Dia X 6.906" Long Precision Port: 0.10 Ft³



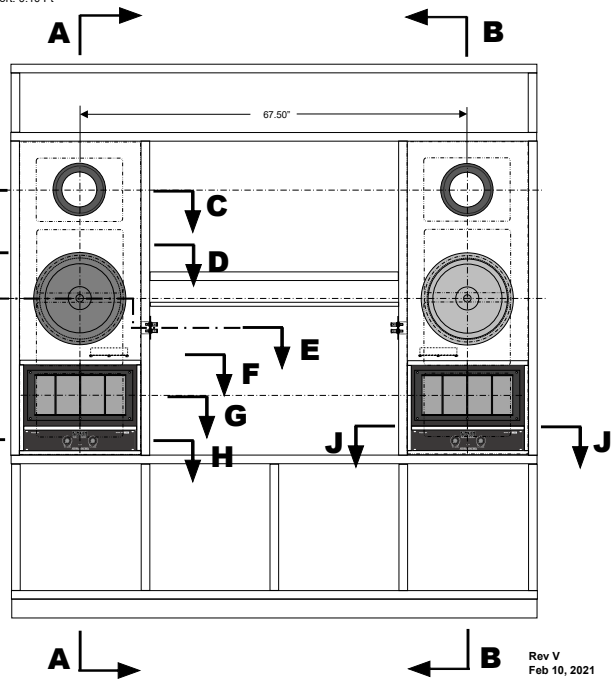
Section B-B



Section K-K



Section A-A



Rev V
Feb 10, 2021

Vinewood Media Room Speaker Cabinet Modifications for Altec Model 19 Clones

