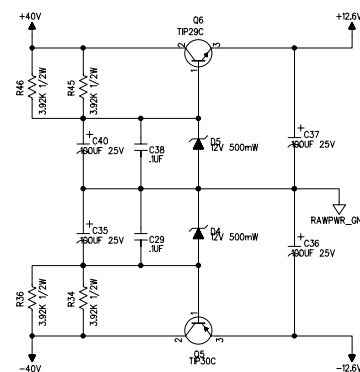
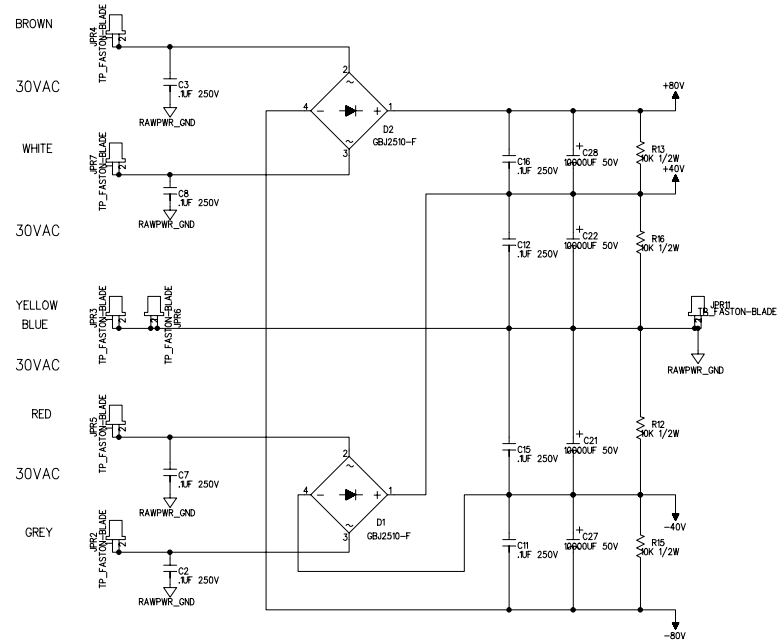


REVISION RECORD			
LTR	ECO NO.	APPROVED	DATE

POWER SUPPLY

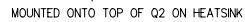
ANBAL PROTO XFMR WIRING:



POWER FOR DAUGHTER & EQ BOARDS

COMPANY:			
EVENT			
DRAWN: DS	DATED: 8/11/08	TITLE: OPAL MAIN BOARD	REV: 7
CHECKED:	DATED:	CODE:	DRAWING NO:
QUALITY CONTROL:	DATED:	SCALE:	SHEET: OF
RELEASED:	DATED:		

REVISION RECORD			
LTR	ECO NO:	APPROVED:	DATE:



DRAWN: DS		DATED: 9/11/08			
CHECKED:		DATED:		TITLE: OPAL MAIN BOARD	
QUALITY CONTROL:		DATED:	CODE:	SIZE:	DRAWING NO:
RELEASED:		DATED:			REV: 7
			SCALE:		SHEET: OF

EVENT

REVISION RECORD			
LTR	ECO NO:	APPROVED:	DATE:



H1
H5
H6
H3
H4
H2

COMPANY:

EVENT

DRAWN: DS		DATED: 9/11/08		TITLE: OPAL MAIN BOARD		REV: 7
CHECKED:		DATED:				
QUALITY CONTROL:		CODE:	SIZE:	DRAWING NO:		SCALE: _____ SHEET: _____ OF _____
RELEASED:		DATED:				

REVISION RECORD			
LTR	ECO NO:	APPROVED:	DATE:

HS_T=220_AAYD-S93002B000000	HS_T=220_AAYD-S93002B000000	HS_T=220_AAYD-S93002B000000
M3_THERMALCOIL	M3_THERMALCOIL	M3_THERMALCOIL
M2_WASHER PLAIN M3 d7mm ZINC ISO-10989	M2_WASHER PLAIN M3 d7mm ZINC ISO-10989	M2_WASHER PLAIN M3 d7mm ZINC ISO-10989
M4_WASHER SPRING LOCK M3 ZINC	M4_WASHER SPRING LOCK M3 ZINC	M4_WASHER SPRING LOCK M3 ZINC
M5_NUT M3 ZINC ISO-4032	M5_NUT M3 ZINC ISO-4032	M5_NUT M3 ZINC ISO-4032
<input type="checkbox"/> SCREW M3 x 10mm ZINC ISO 7045	<input type="checkbox"/> SCREW M3 x 10mm ZINC ISO 7045	<input type="checkbox"/> SCREW M3 x 10mm ZINC ISO 7045

MT21 ☐ RIBBON, 3 COND, 60mm LENGTH
MT22 ☐ RIBBON, 3 COND, 85mm LENGTH
MT20 ☐ HEATSHRINK 3/32" DIA, 60MM LENGTH
MT19 ☐ THERMOCOTE

COMPANY:		EVENT	
8	TITLE: OPAL MAIN BOARD		
CODE:	SIZE:	DRAWING NO:	REV 7
SCALE:		SHEET:	OF

DRAWN: DS		DATED: 9/11/08		EVENT	
CHECKED:		DATED:		TITLE: OPAL MAIN BOARD	
QUALITY CONTROL:		DATED:		CODE:	SIZE:
				DRAWING NO:	
RELEASED:		DATED:		REV 7	
				SCALE: SHEET: OF	