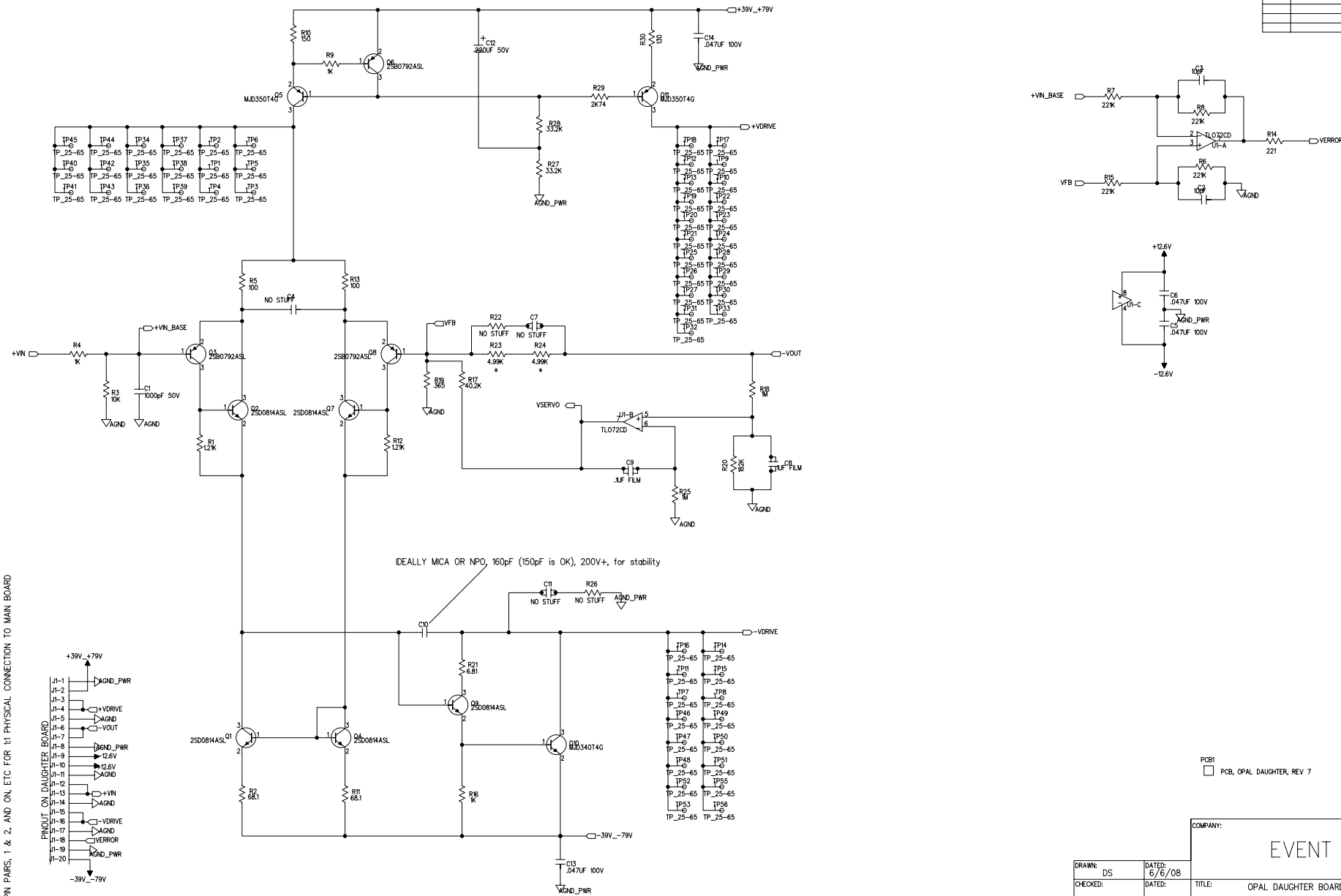


REVISION RECORD			
LTR	ECO NO:	APPROVED:	DATE



Pinout diagram for the DAUGHTER BOARD. The board has 20 pins labeled J1-1 to J1-20. The connections are as follows:

- J1-1: +39V/+79V
- J1-2: AGND_PWR
- J1-3: +VDRIVE
- J1-4: +VDRIVE
- J1-5: +VDRIVE
- J1-6: +VDRIVE
- J1-7: +VDRIVE
- J1-8: AGND_PWR
- J1-9: +VDRIVE
- J1-10: +VDRIVE
- J1-11: +VDRIVE
- J1-12: +VDRIVE
- J1-13: +VDRIVE
- J1-14: +VDRIVE
- J1-15: +VDRIVE
- J1-16: +VDRIVE
- J1-17: +VDRIVE
- J1-18: +VDRIVE
- J1-19: +VDRIVE
- J1-20: +VDRIVE

COMPANY: _____

DRAWN: DS	DATED: 6/6/08			
CHECKED:	DATED:	TITLE: OPAL DAUGHTER BOARD		
QUALITY CONTROL:	DATED:	CODE:	SIZE:	DRAWING NO: REV 7
RELEASED:	DATED:	SCALE:		SHEET: OF