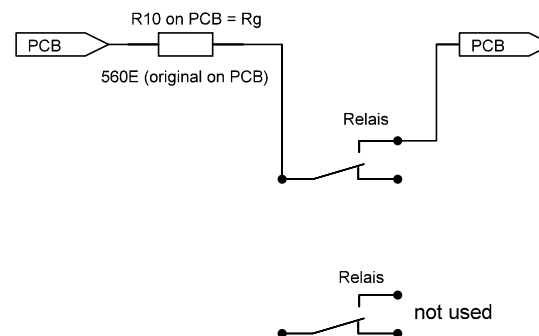
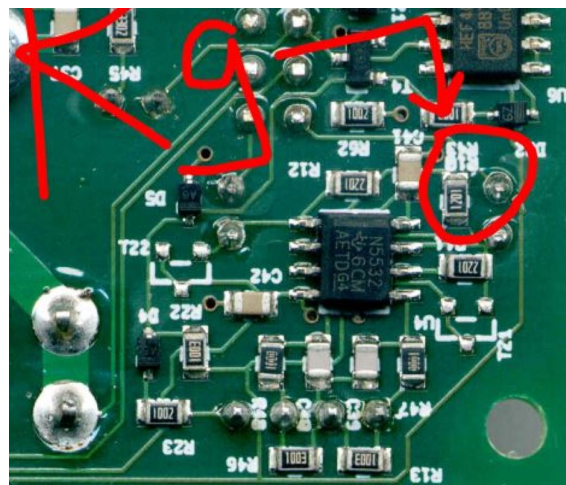


Replaced Rg with 560 Ohm (old version)



Input Impedance: 100 kOhm
Gain 1 = 21
Gain 2 = 4,5

Gain Formula ($R_f = 2k2$)

$$A_v = 4.5 \times \left(1 + 2 \times \frac{R_f}{R_g} \right)$$

Rg = 560E -> Gain = 21
Rg = "open" -> Gain = 4,5

Gydisub Gain Selection

Update: 23-06-2017

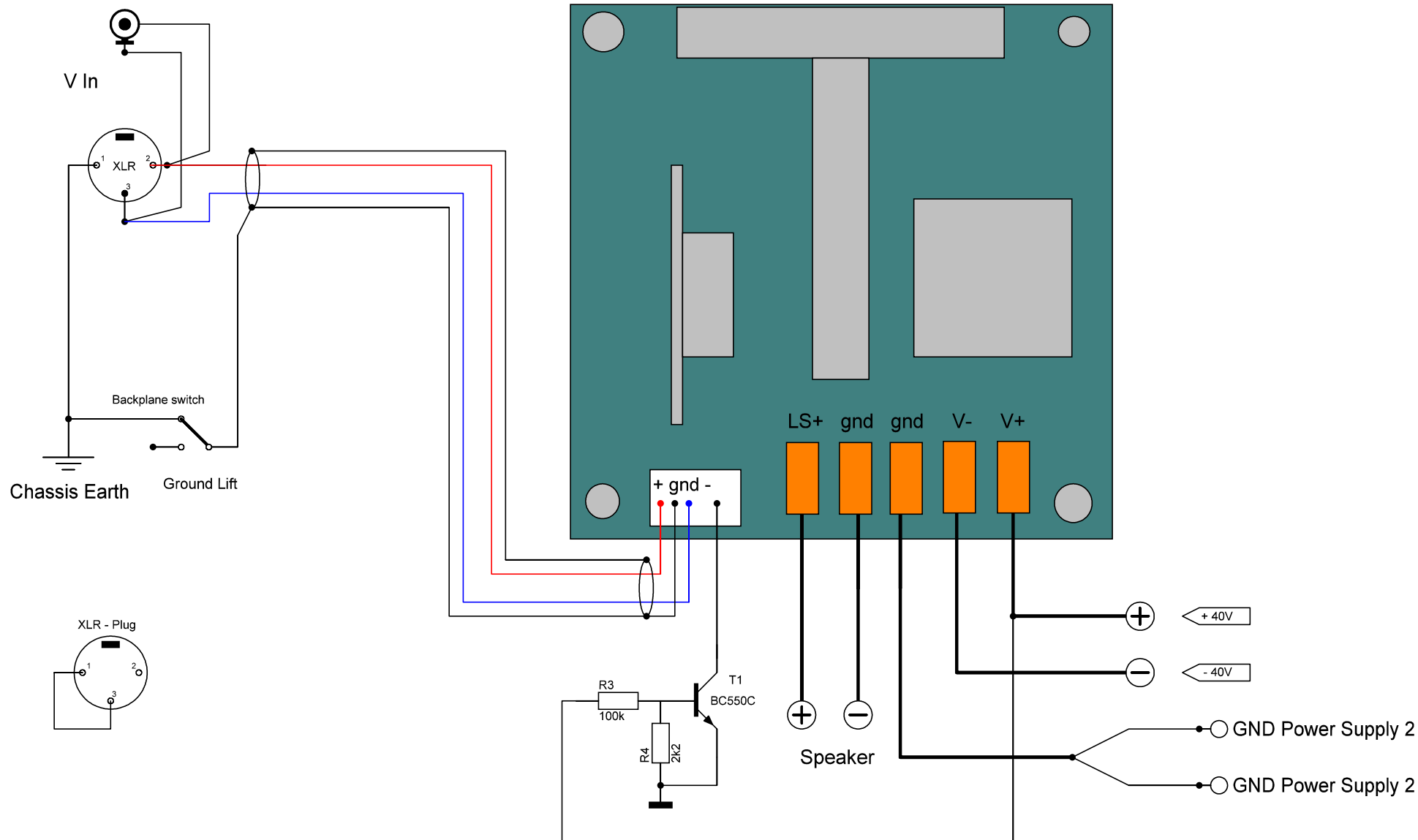
Author: Doede Douma

Revision: 1.0

Built:
YES

Design ready:
YES

Page: 1 # 3



Amplifier is switched on when PS voltage > ~26V

Important Note: when using with Cinch Input: Pin 3 need to be put to GND ! (by special XLR Plug)

Gydisub, Amplifier setup

Update: 23-06-2017

Author: Doede Douma

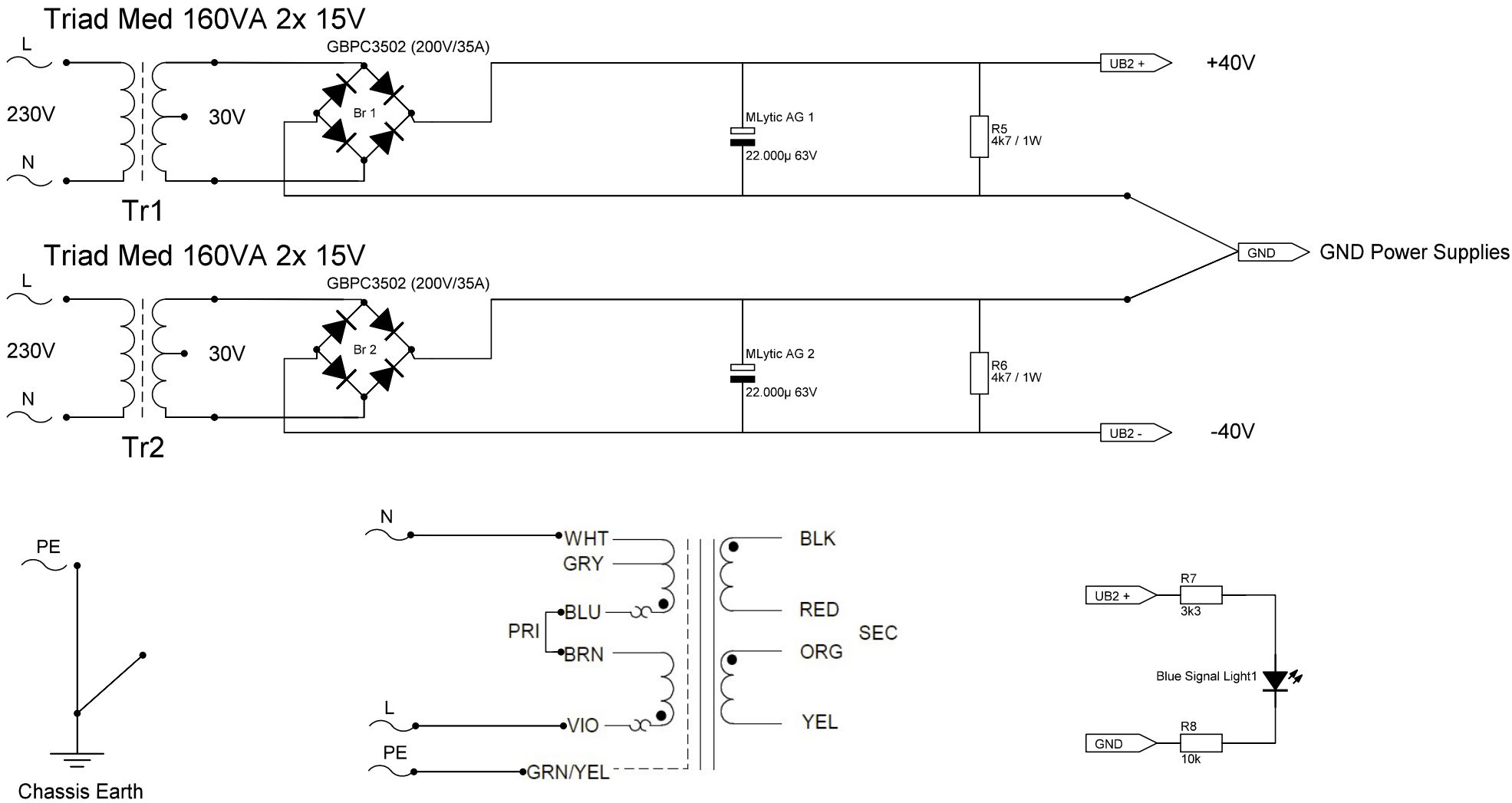
Revision: 1.0

Built:
YES

Design ready:
YES

Page: 2 # 3

Mouser: 553-VPM30-5330



Gydisub, Power Supply

Update: 23-06-2017

Author: Doede Douma

Revision: 1.0

Built:
YES

Design ready:
YES

Page: 3 # 3