

## oNo\_spaz Guitar Preamp

Designed to Drive a 10kOhm impedance.

Op Amp requirements:

Capacitive Load Drive >330pF  
(approx. 10 feet of guitar cable)

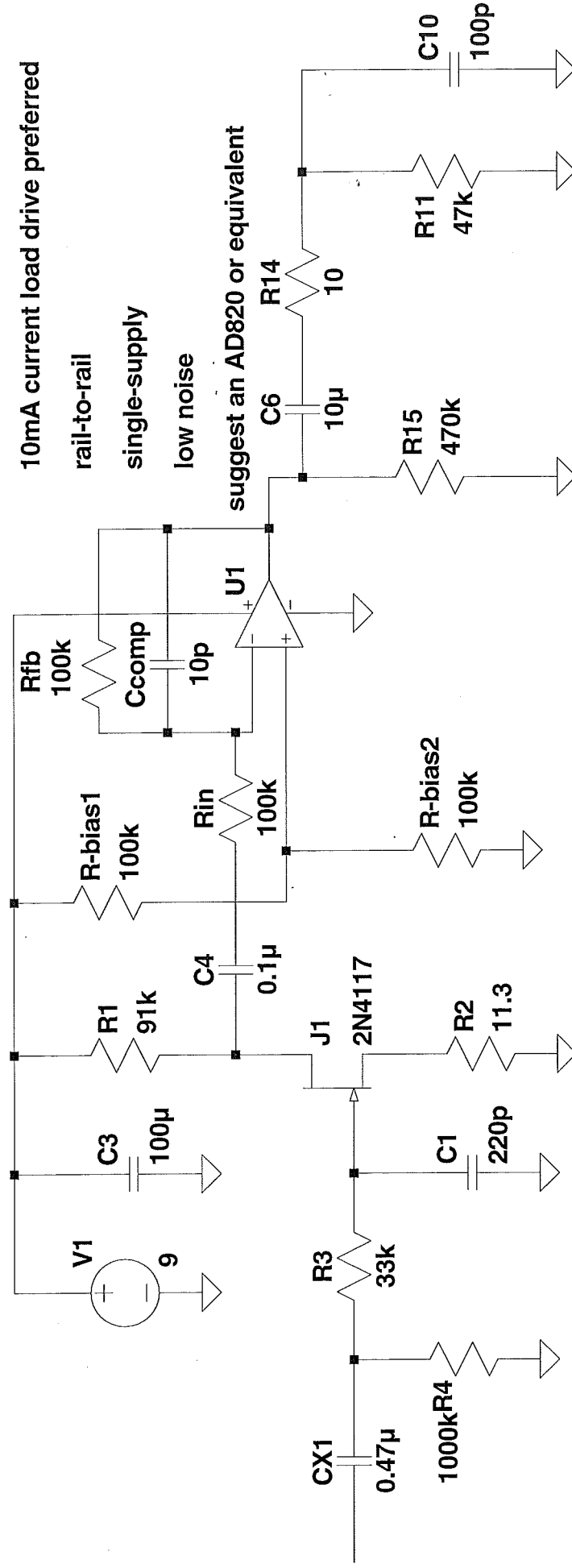
10mA current load drive preferred

rail-to-rail

single-supply

low noise

suggest an AD820 or equivalent



If you want to drive a 10kOhm load with up to 12dB of gain and switch between passive and active mode without changing phase, I would suggest you try using an inverting opamp stage after your JFET stage coupled with a double-pole-double-throw switch.