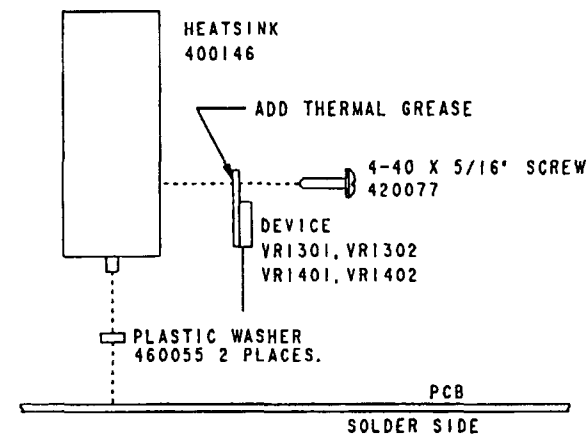
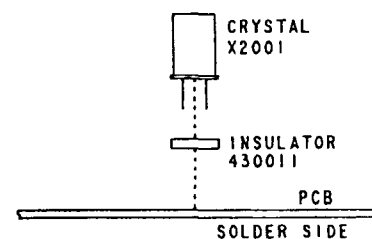


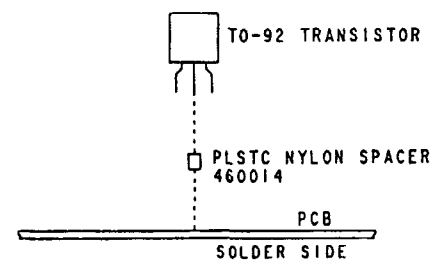
HEATSINK MOUNTING
DETAIL A



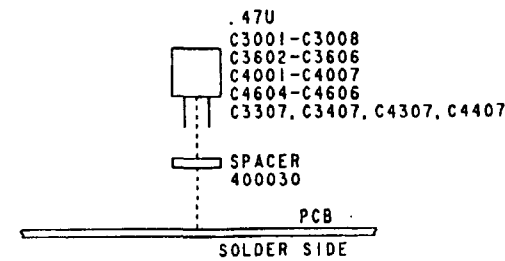
HEATSINK MOUNTING
DETAIL B



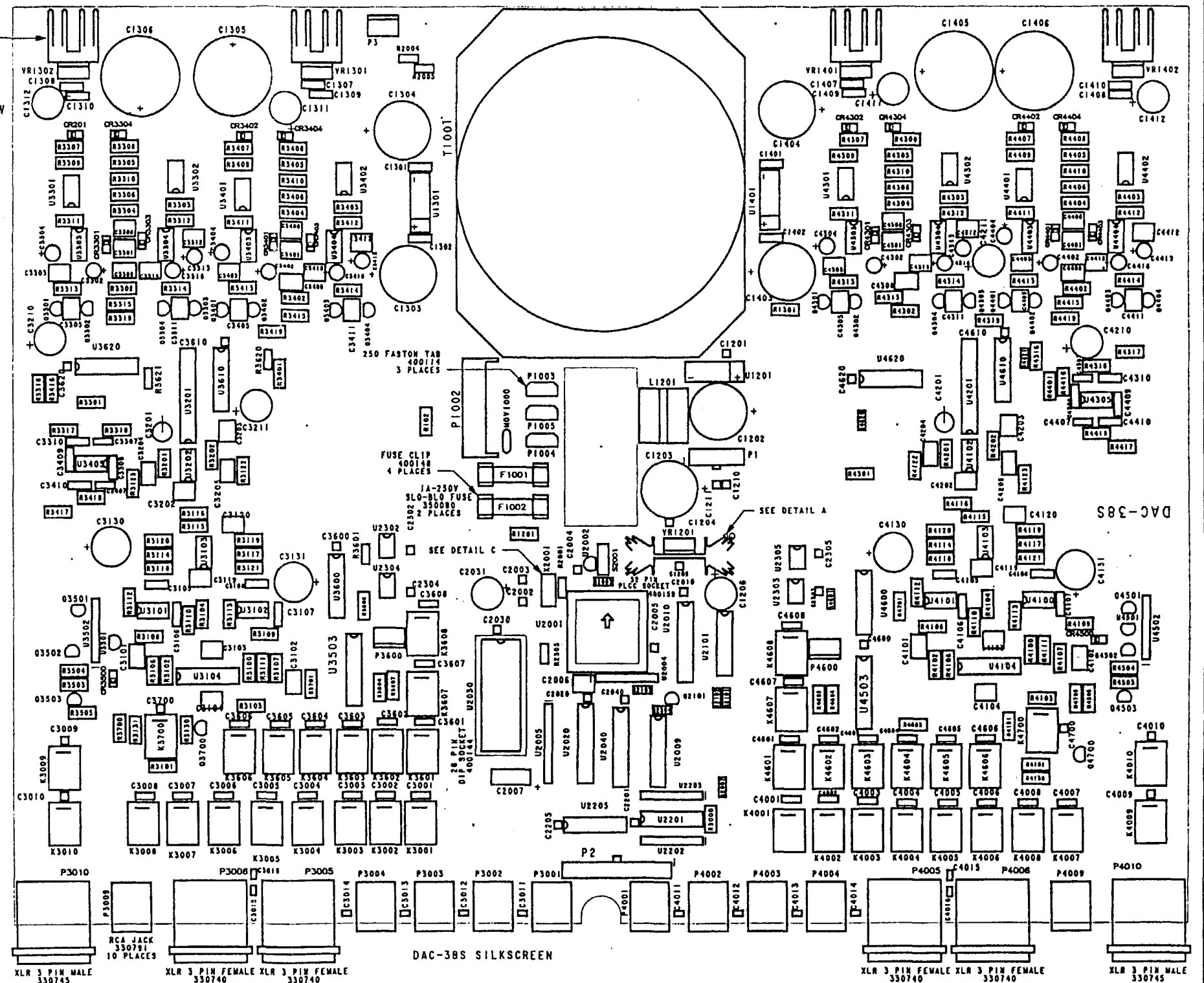
CRYSTAL MOUNTING
DETAIL C



TO-92 MOUNTING
DETAIL D



CAP MOUNTING
DETAIL E



NOTE:


1 DO NOT EXPOSE XLR INSERTS 330745/330740 AND
47P 125V CAPS 220003 TO FREON.

ORIGINAL IN RED	
Part No.	580245A
Rev.	940954A
Reference data:	
Type of material	<input type="checkbox"/> Prototype <input type="checkbox"/> Pilot <input type="checkbox"/> Production
Comments:	
Drilling approved:	Engineering approved: <i>TAC</i>
Issued by:	Signature: <i>211</i>

TOLERANCES UNLESS SPECIFIED		MADRIGAL audio laboratories, inc.	
FRACTION ±.010 DECIMAL ±.005 ANGLE ±1/2°		2081 south main street Middleton Connecticut 06457 U.S.A.	
DR. BY DATE CH. BY DATE		MATERIAL	
A 6-21		USED IN No. 38S	
REVISION		NAME DAC-38S ASS'Y DWG	
DATE		SHEET OF 95 1 1 1 1 1	
SCALE		NO. 940954A	

HEATSINK MOUNTING
DETAIL A

HEATSINK MOUNTING
DETAIL B



CRYSTAL
X2001

INSULATOR
430011

PCB

SOLDER SIDE

CRYSTAL MOUNTING
DETAIL C

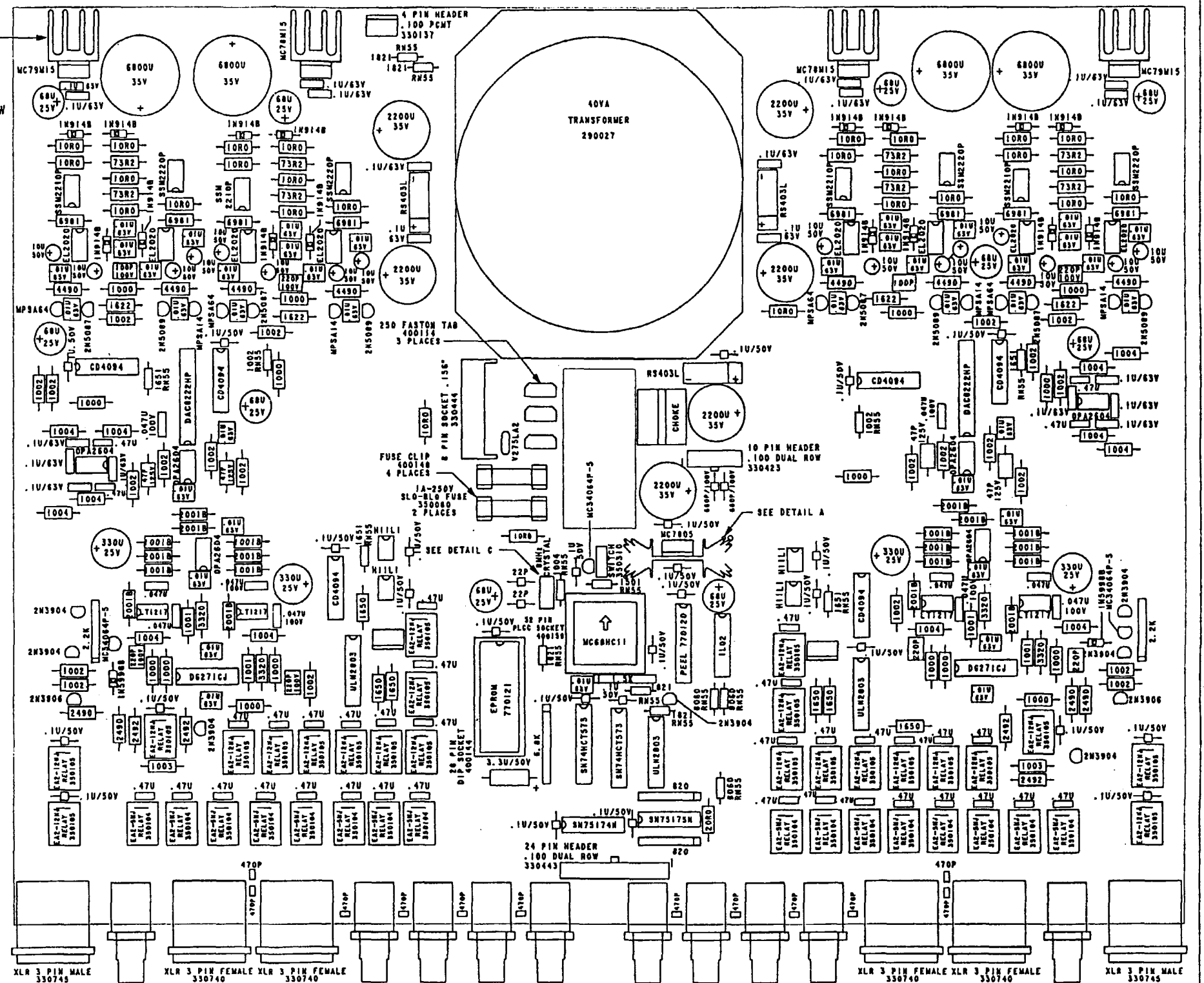
TO-92 TRANSISTOR

PLSTC NYLON SPACER
460014

PCB

SOLDER SIDE

Diagram illustrating the assembly of a component (C3001-C3008, C3602-C3606, C4001-C4007, C4604-C4606, C3307, C3407, C4307, C4407) onto a PCB. The component is connected to the PCB via a spacer (400030). The PCB is labeled "PCB" and "SOLDER SIDE".



NOTE:

I DO NOT EXPOSE XLR INSERTS 330745/330740 AND
47P 125V CAPS 220003 TO FREON.

ORIGINAL IN RED

5802378

940925D

☒ Part
☐ Sub
☐ Detail

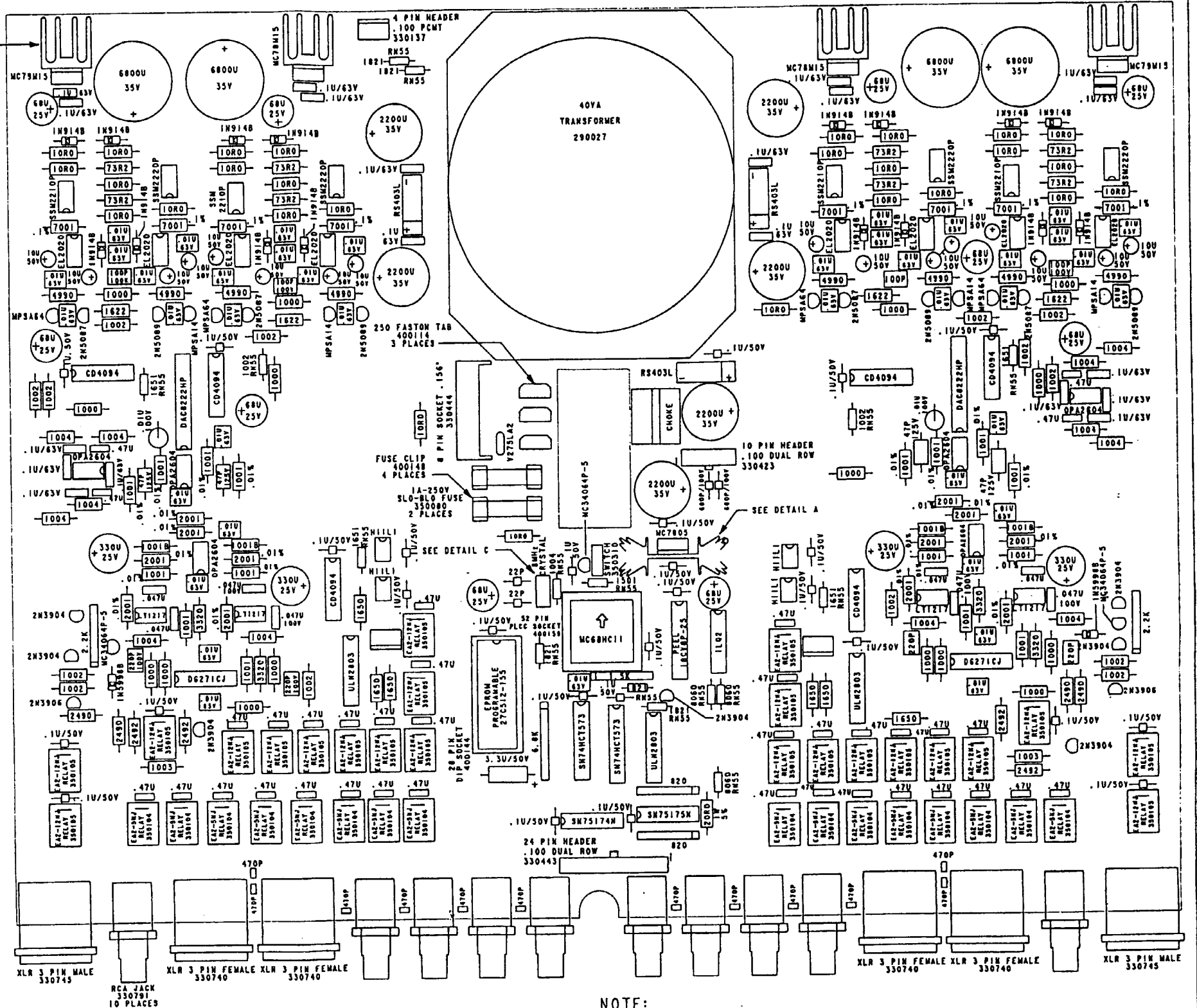
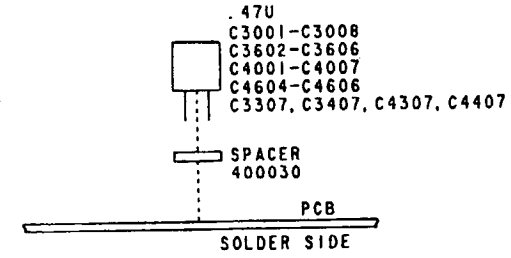
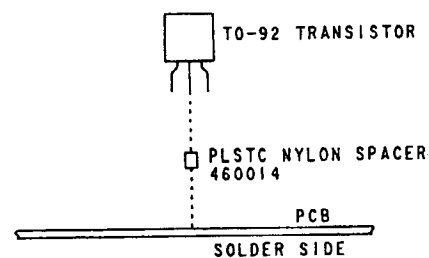
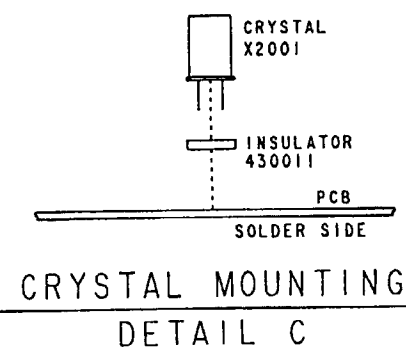
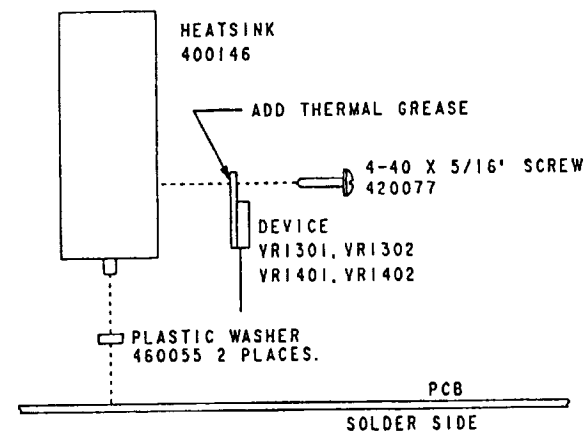
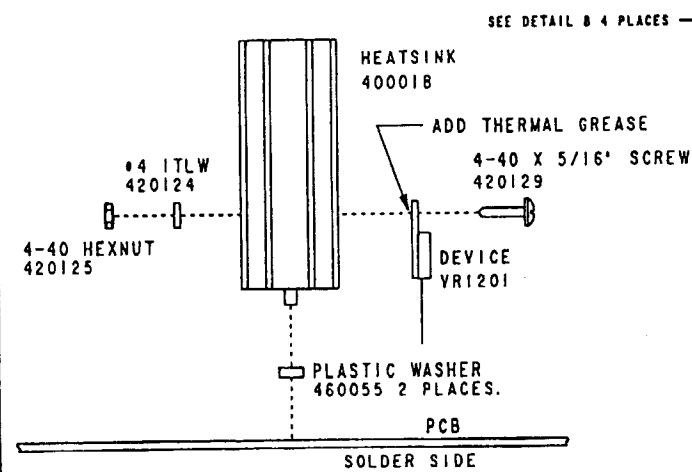
Release date _____

Type of release: ☐ Prototype ☐ Pilot
☐ Full production ☒ Articles

Comments _____

Drafting approved _____ Engineering approved Town
Issued by _____ Signature _____ Date 21 Dec

			TOLERANCES UNLESS SPECIFIED		MADRIGAL audio laboratories, Inc.							
			FRACTION ± .010		2081 south main street middletown connecticut 06457 u.s.a.							
D	ADDED DETAIL E	6-22	DECIMAL ± .005		MATERIAL		SHEET		OF		SIZE C	
C	VALUE CHANGES	10-5	ANGLE ± 1/2°		USED IN No. 38		A 93	B 93	C 93	D 95	E	R
B	CIRCUIT CHANGES	9-21	DR. BY A. M.	DATE 6-7-93			NO.					
A	VALUE CORRECTIONS	8-11	CH. BY	DATE	NAME DAC-38 ASS'Y DWG NOCODE		9409250					
ISSUE	REVISION	DATE	SCALE									



NOTE:

1 DO NOT EXPOSE XLR INSERTS 330745/330740 AND
47P 125V CAPS 220003 TO FREON.

ORIGINAL IN RED

580245A

☒ Parts _____

☐ On _____

☐ Private _____

940955A

Balance due to _____

Type of release ☐ Prototype ☐ pilot

☐ 1st production ☒ Revision

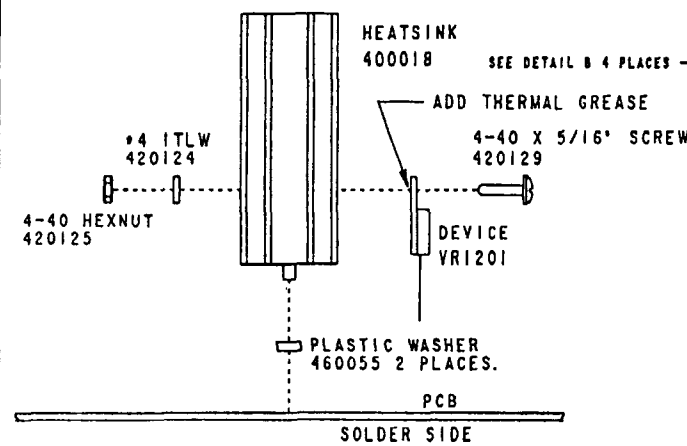
Comments _____ *gprn*

Drafting approved _____ Engineering approved _____ *Tark*

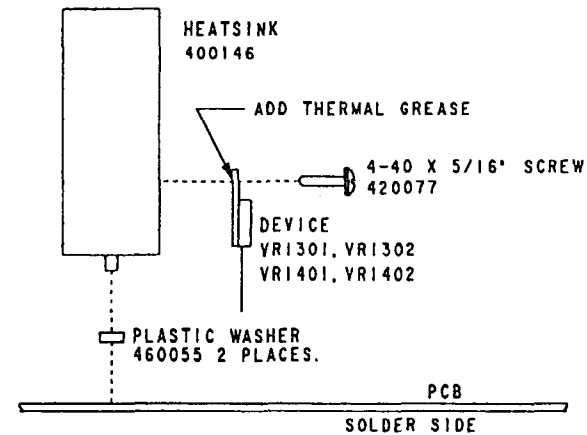
Issued by _____ Signature _____ Date *26 June*

			TOLERANCES UNLESS SPECIFIED
			FRACTION ± .010
			DECIMAL ± .005
			ANGLE ± 1/2°
			DR. BY DATE A. M. 2-23-9
A	DETAIL E ADDED	6-21	CH. BY DATE
ISSUE	REVISION	DATE	SCALE

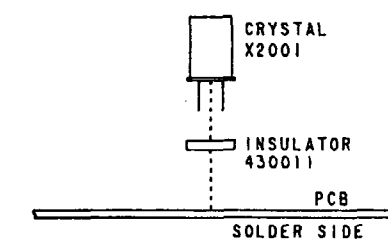
MADR I GAL audio_laboratories, inc.											
2081 south main street middletown connecticut 06457 u.s.a.											
MATERIAL					SHEET		OF		SIZE C		
USED IN No. 385					A 95		B	C	D	E R	
NAME SAC 788 ASSEMBLY BWC N0605E					NO.		940955A				



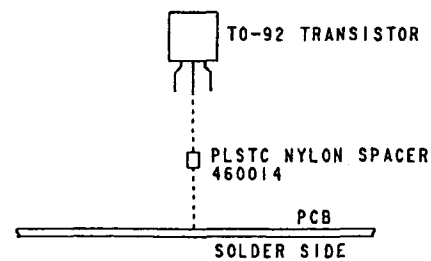
HEATSINK MOUNTING
DETAIL A



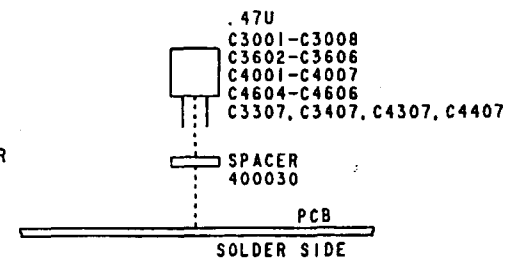
HEATSINK MOUNTING
DETAIL B



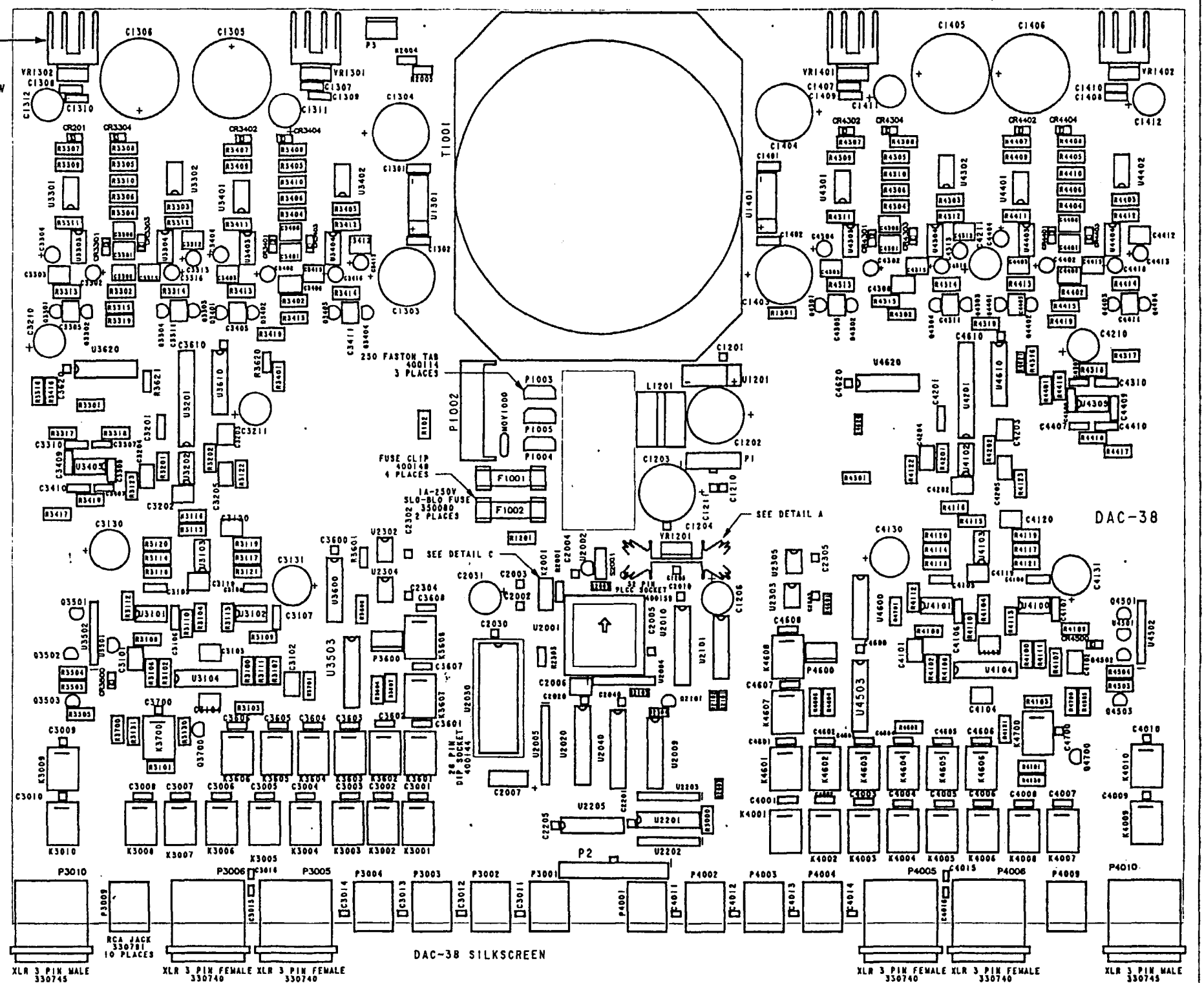
CRYSTAL MOUNTING
DETAIL C



TO-92 MOUNTING
DETAIL D



CAP MOUNTING
DETAIL E



NOTE:

1 DO NOT EXPOSE XLR INSERTS 330745/330740 AND 47P 125V CAPS 220003 TO FREON.

ORIGINAL IN RED	
Part No.	5802378
Rev.	940924C
Date	6/28/98
Type of release	<input type="checkbox"/> Prototype <input type="checkbox"/> Pilot <input checked="" type="checkbox"/> Production
Comments	
Drafting approved	Engineering approved <i>DAC</i>
Drawn by	Signature <i>DAC</i> Date 26 June 98

TOLERANCES UNLESS SPECIFIED		FRACTIONS .010 DECIMALS .005 ANGLE $\pm 1/2^\circ$	
C		ADDED DETAIL E	
B		ARTWORK REVISED	
A		VALUE CORRECTIONS	
ISSUE		REVISION	
DATE		SCALE	
MADRIGAL audio laboratories, inc.			
2081 south main street middletown connecticut 06457 u.s.a.			
MATERIAL		SHEET OF SIZE	
USED IN		A B C D E R	
No. 38		93 93 93	
NAME		NO.	
DAC-38 ASS'Y DWG		940924C	