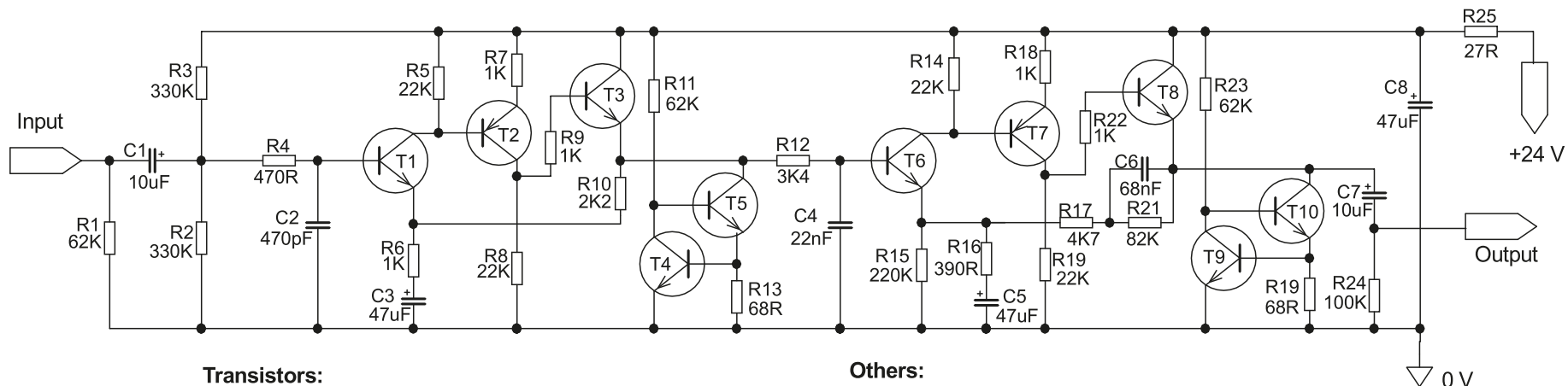


NAIM NA 322/4 MM phono board



Transistors:

T1, 3, 4, 5, 6, 8, 9, 10: ZTX 834 or BC 550C

T2, T7: ZTX 214 or BC 560C

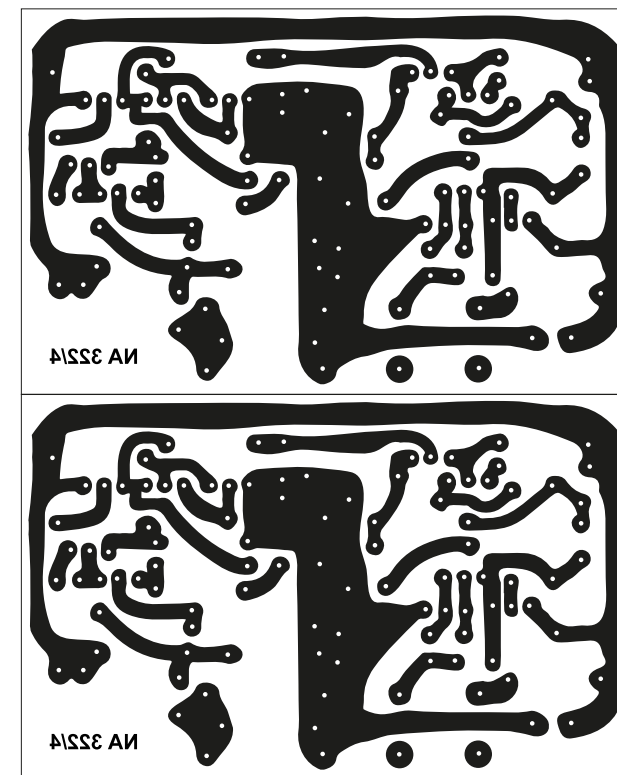
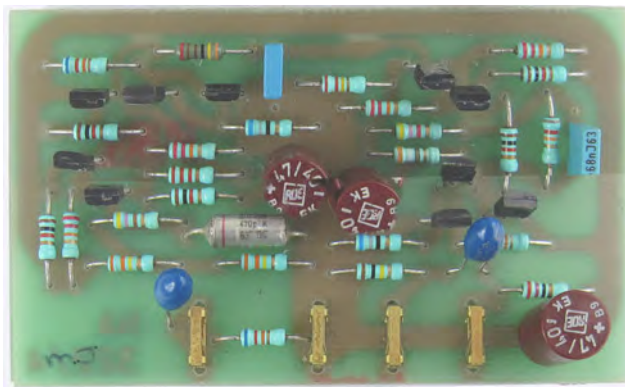
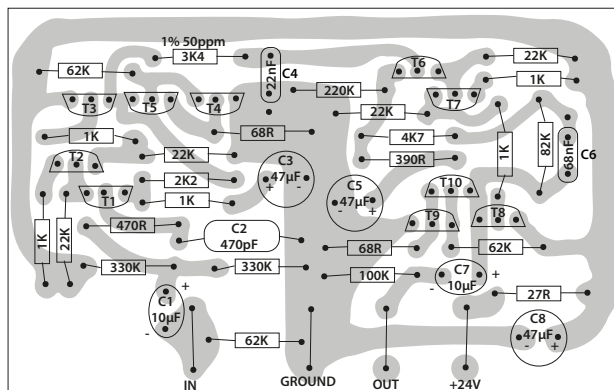
Others:

C1, C7: Tantalum 35V

C3, C5, C8: Electrolytic 40V

C2: Styroflex

R12: 1% 50ppm



mirrored layout for printing
(81 mm x 51 mm)