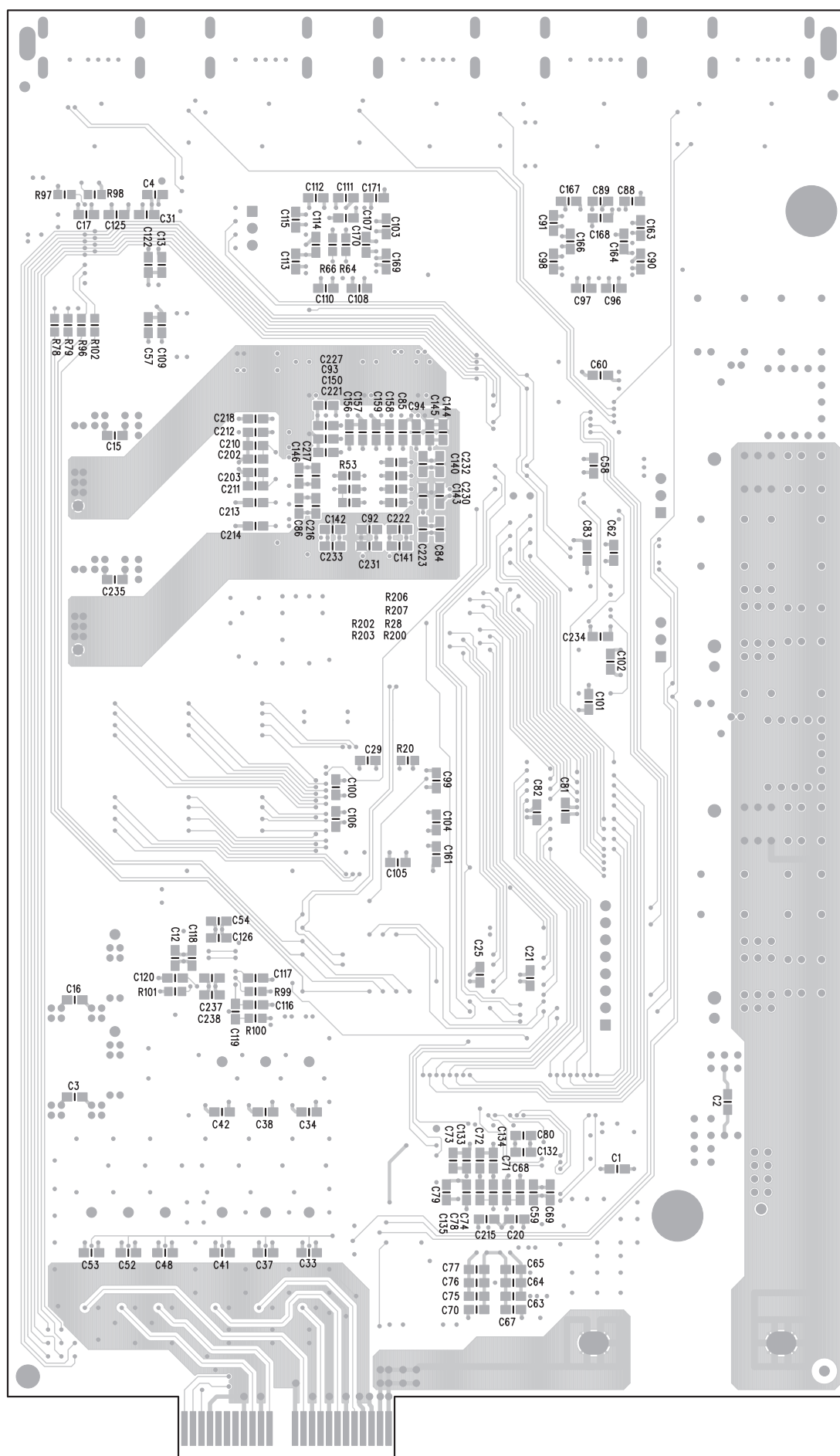
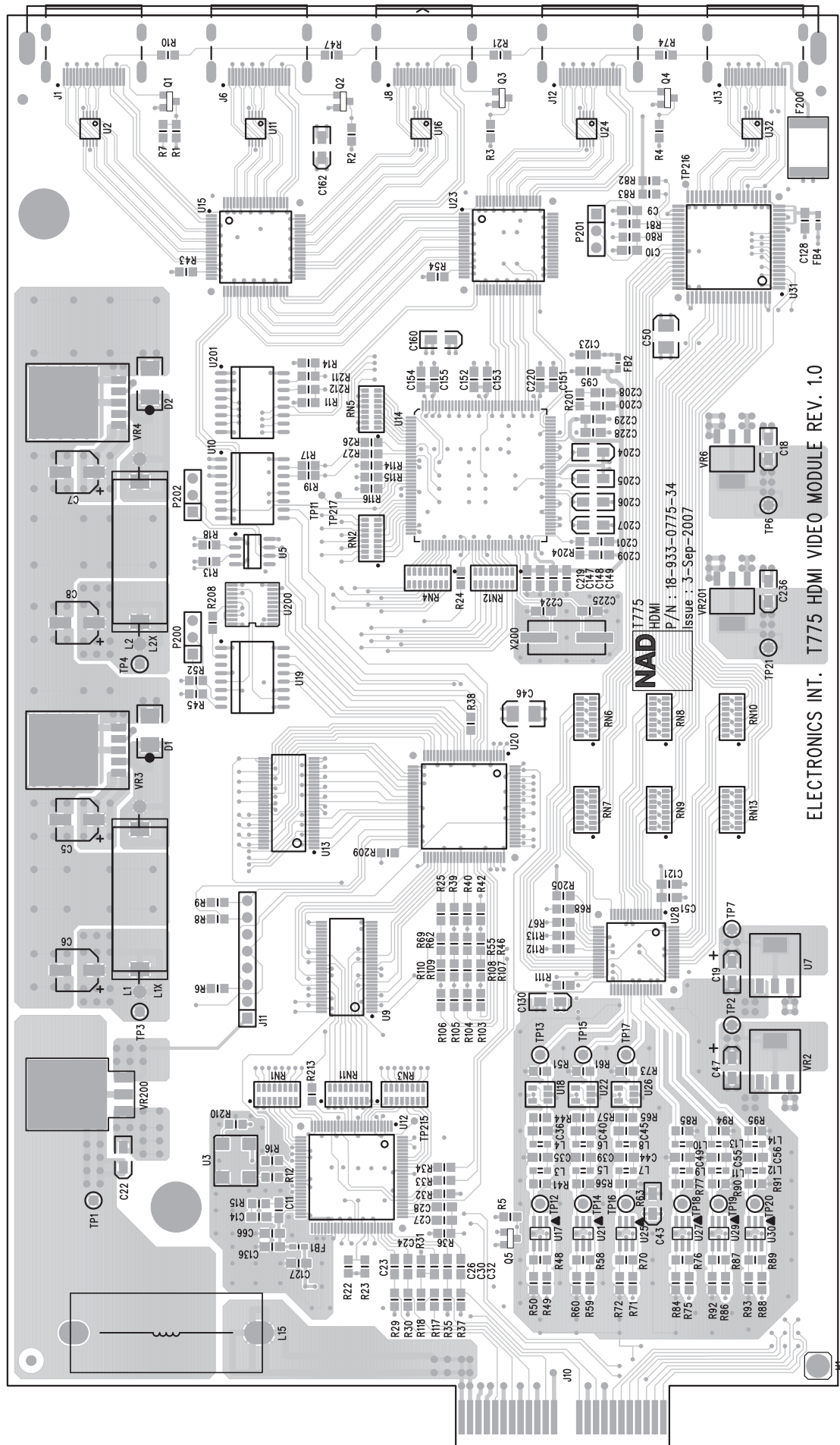


HDMI BOARD-COPPER SIDE



HDMI BOARD-COMPONENT SIDE



ELECTRONICS INT. T775 HDMI VIDEO MODULE REV. 1.0

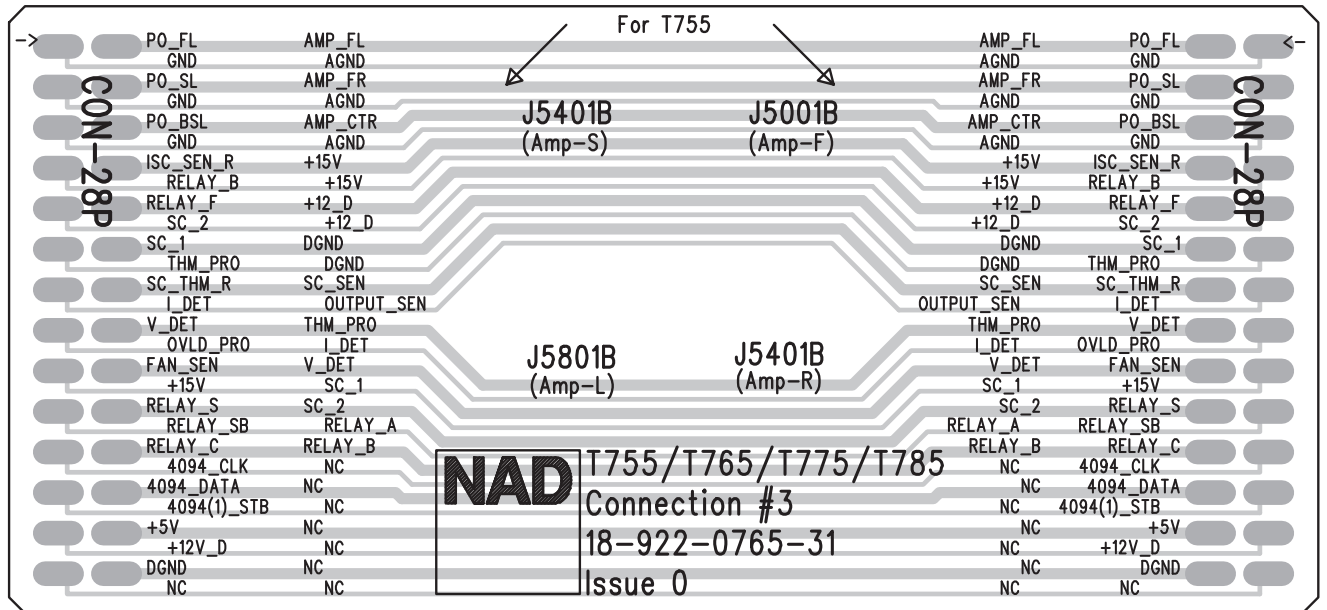
AC OUTLET :
FOR CE : M8003
FOR UL : J8016 & J8017

J8015 (Inlet N)
J8017 (Outlet N)
J8016 (Outlet L)
J8012 Switch (AC Inlet)
J8011 Switch (Transformer)
J8013 (Inlet L)
C8005
R8004
C8004
J8003A
J8001A
WHI/BWN BLK/BLU
R8006
F8002
UL : T1.6AL 250V
CE : T800mAL 250V
F8001
UL : T10AL 250V
CE : T6.3AL 250V
T8001
R8003
D8003
C8003
D8005
D8006
R8001
J8002A
+13V
PWR_ON
+12.3V
DGND
J8002
J8001
C8002
D8001
J8002
C8001
D8002
Q8001
JMP3
JMP1
JMP2
M8002
M8001
R8005
C8006

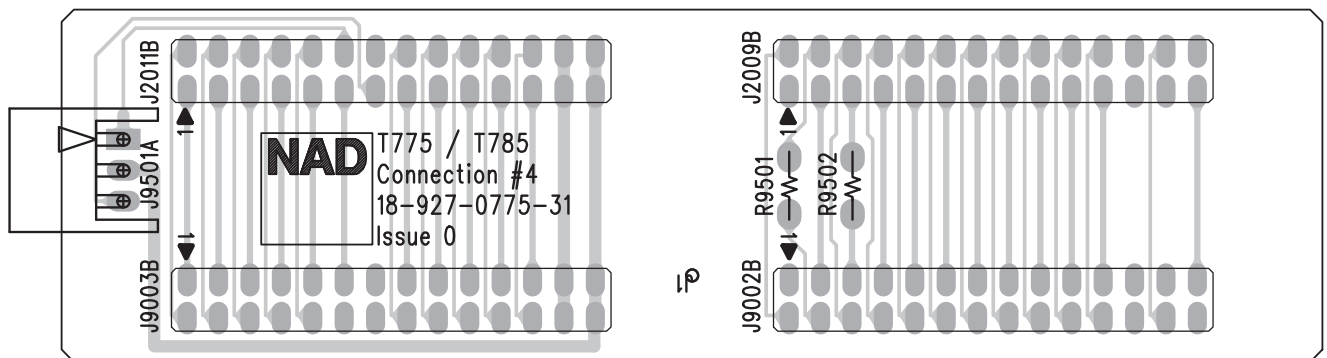
CAUTION:
FOR CONTINUED PROTECTION AGAINST
RISK OF FIRE, REPLACE ONLY WITH
SAME TYPE OF FUSE
ATTENTION:
UTILISER UN FUSIBLE DE
RECHARGE DE MEME TYPE

NAD T765/T775/T785
PSU Standby
18-930-0765-31
Issue 0

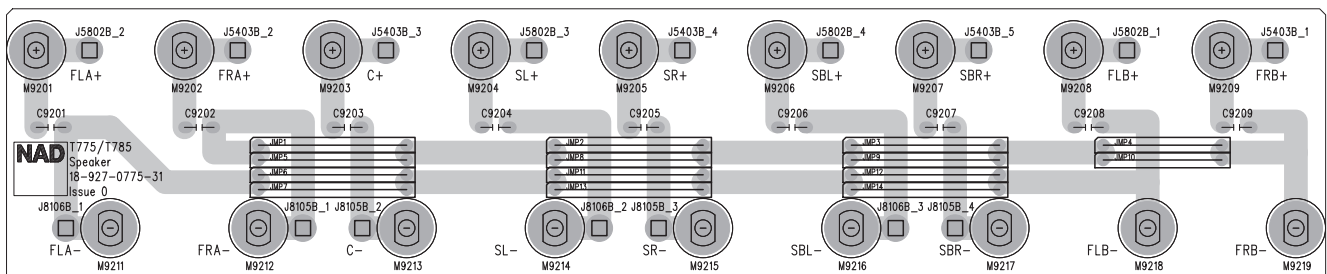
CONNECTOR-3 BOARD-COMPONENT SIDE



CONNECTOR-4 BOARD-COMPONENT SIDE



SPEAKER BOARD-COMPONENT SIDE



CONNECTOR-2 BOARD-COMPONENT SIDE

