

# PCB LAYOUT

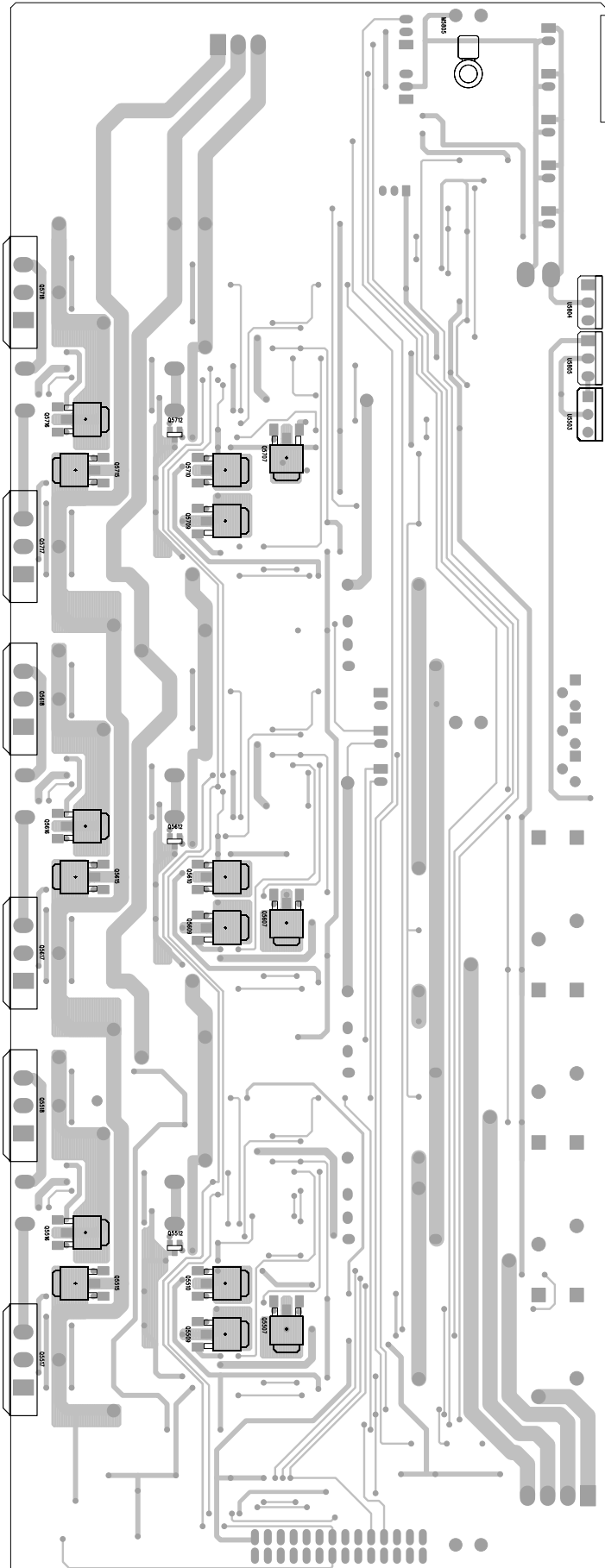
## POWER AMPLIFIER

### LEFT\_CH BOARD-COPPER SIDE

First Production runs:

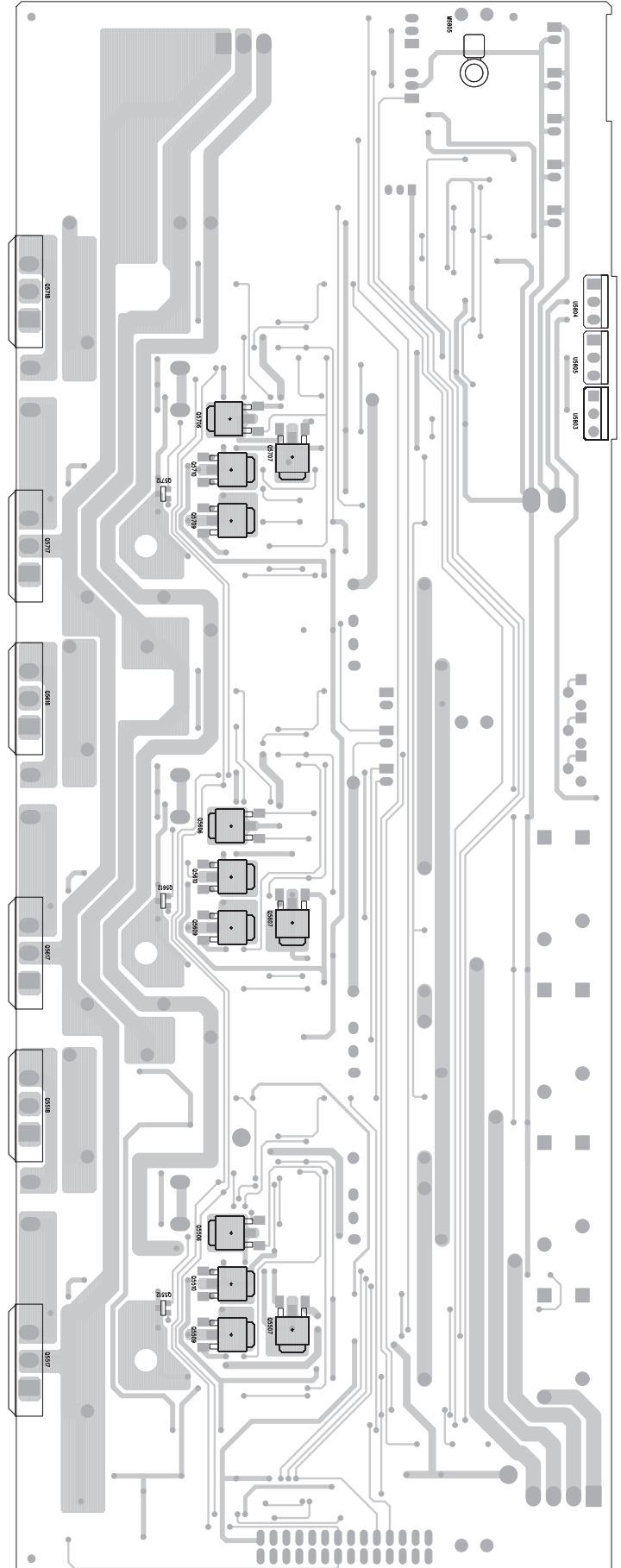
T71T775G00001-T71T775G00028 &

T78T775G00029-T78T775G00510



Production runs:

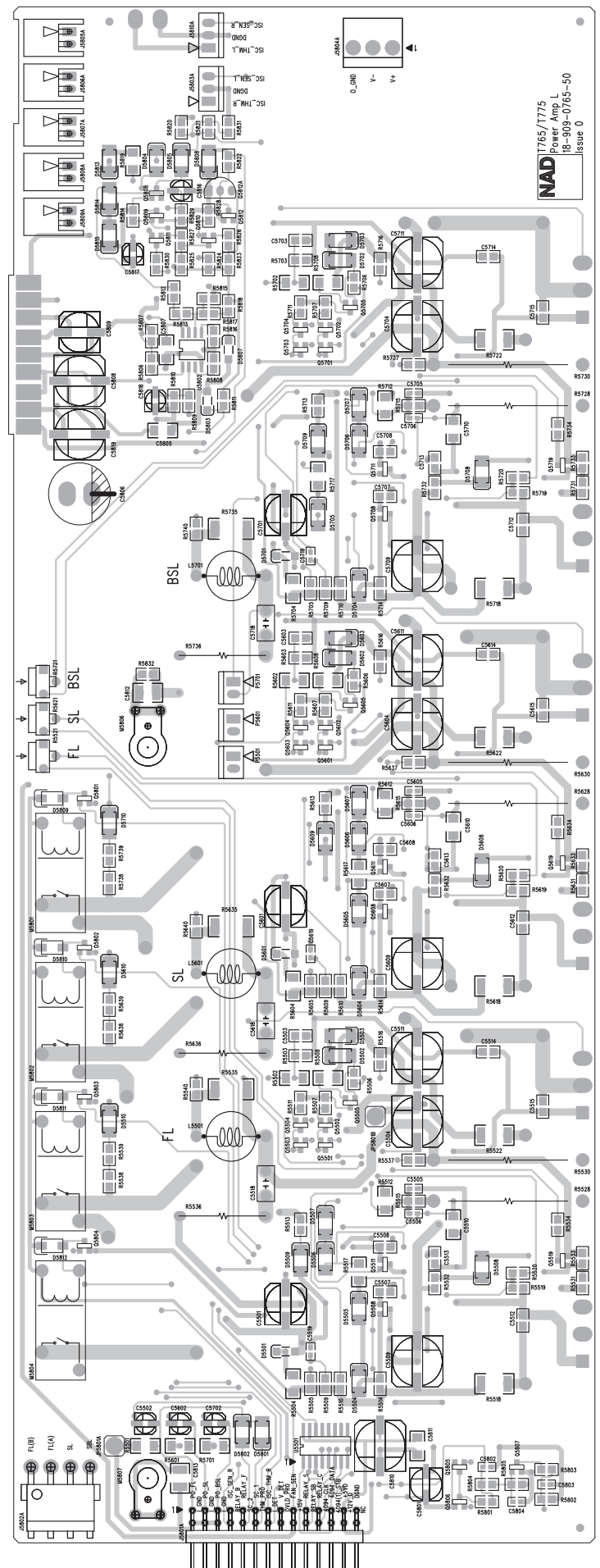
T78T775G00511 and above



T71T775G00001-T71T775G00028 &  
T78T775G00029-T78T775G00510

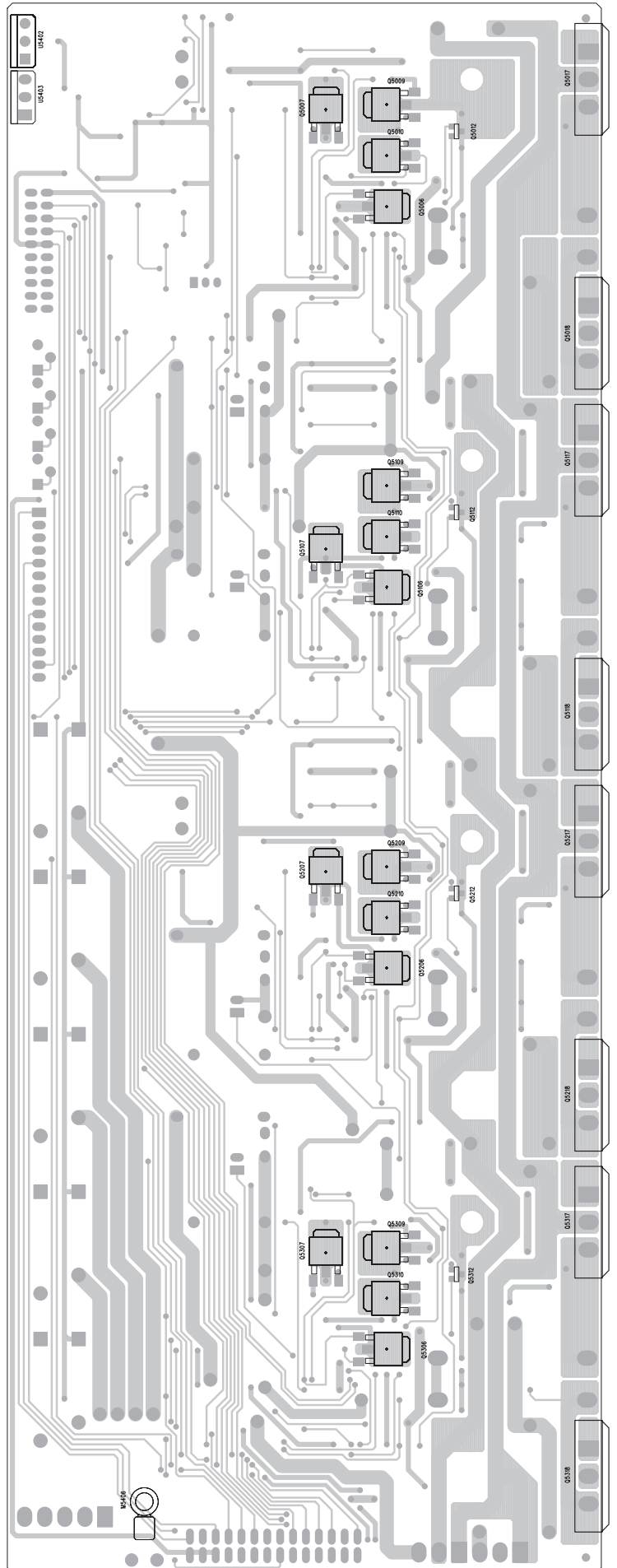


T78T775G00511 and above



First Production runs:  
T71T775G00001-T71T775G00028 &  
T78T775G00029-T78T775G00510

Production runs:  
T78T775G00511 and above

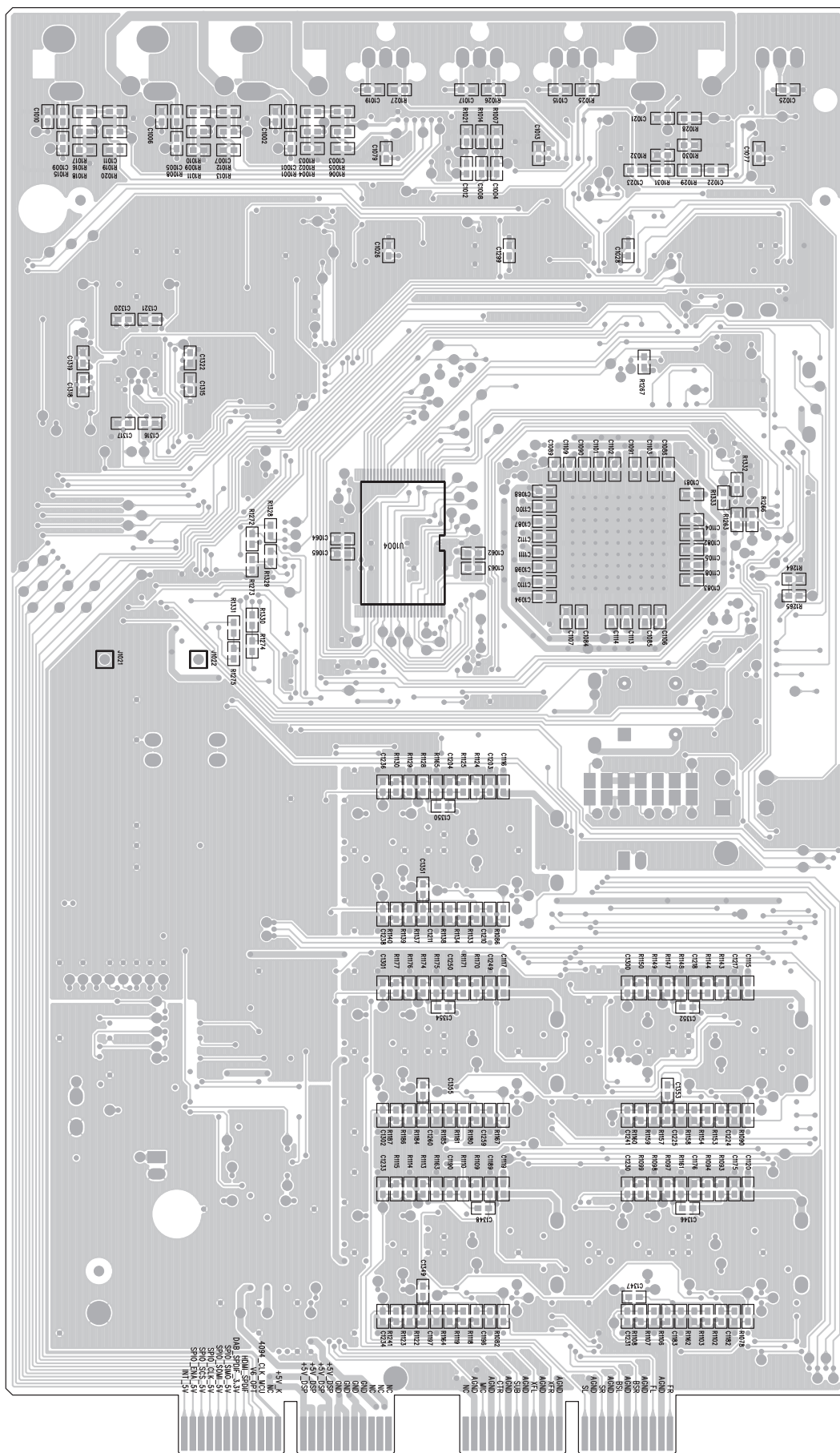


First Production runs:  
T71T775G00001-T71T775G00028 &  
T78T775G00029-T78T775G00510

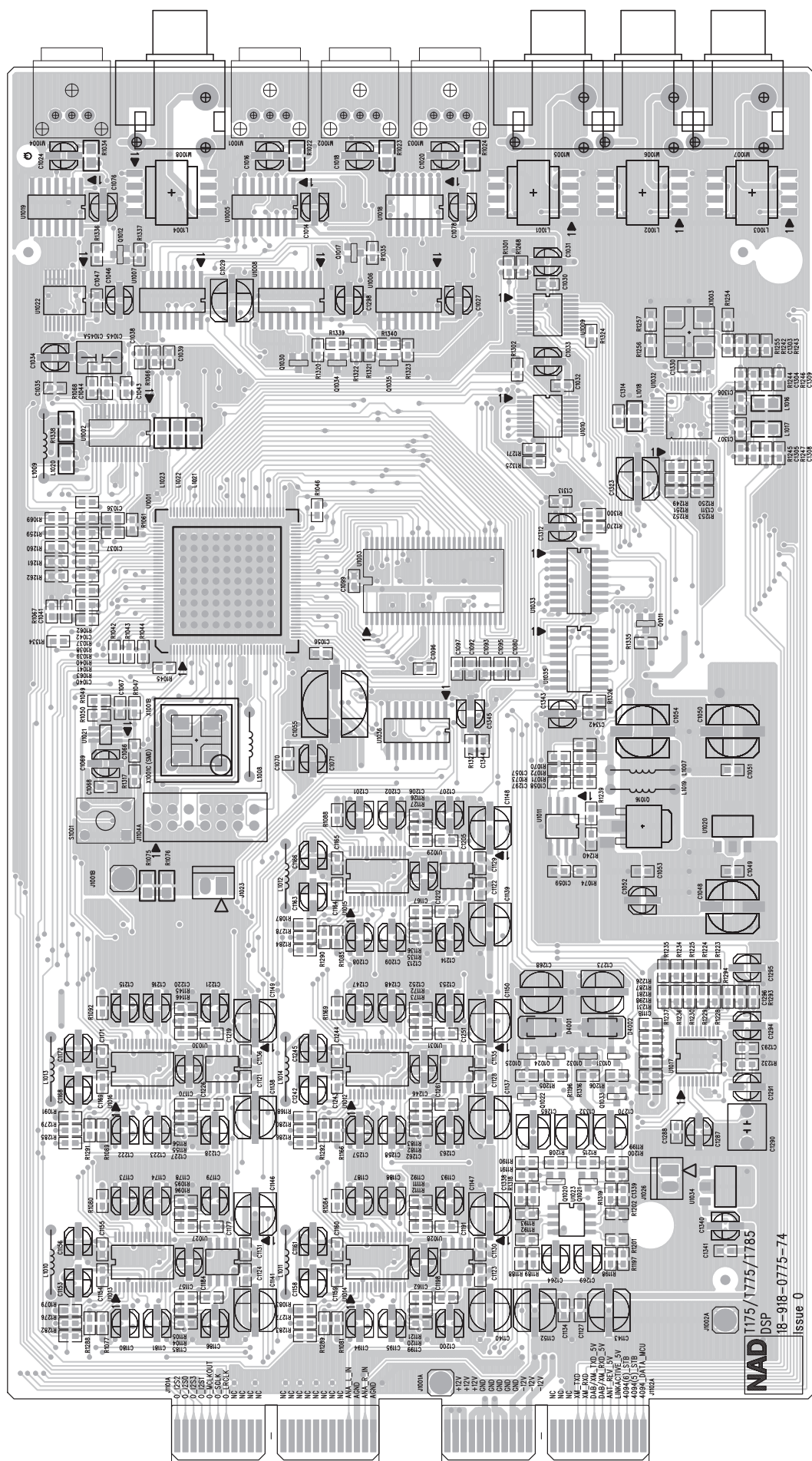




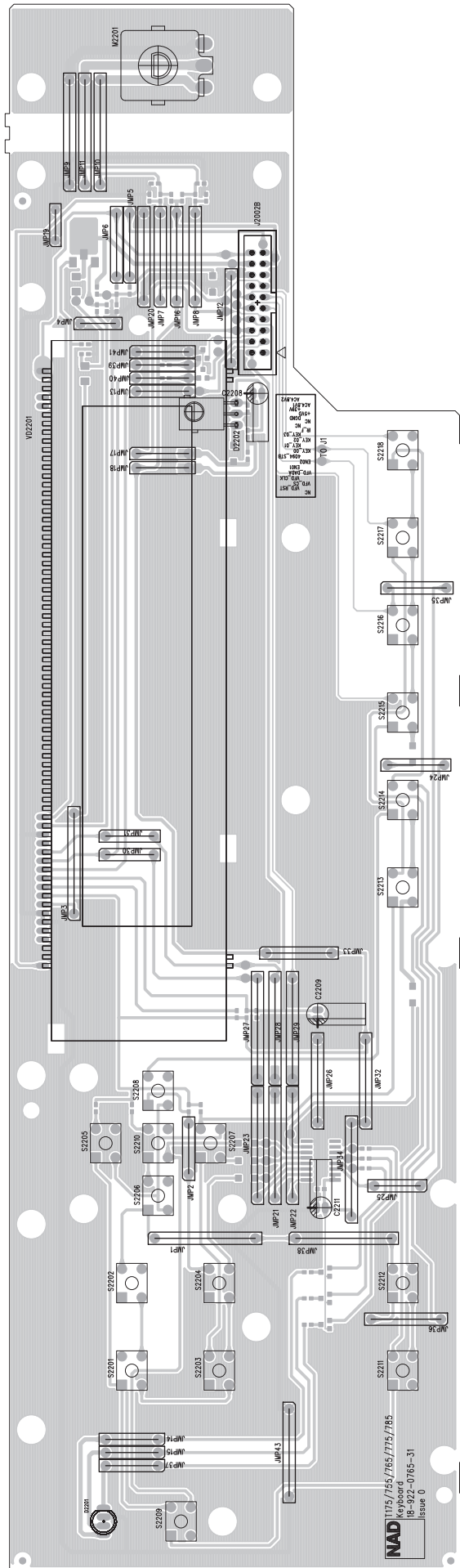
## DSP BOARD - COPPER SIDE



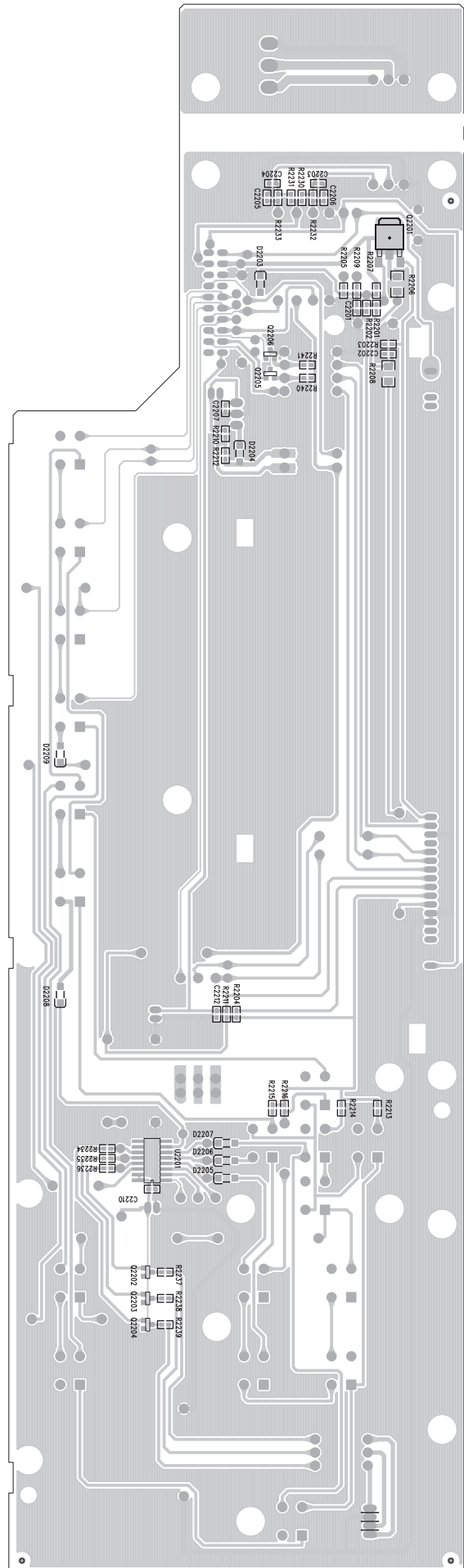
## DSP BOARD - COMPONENT SIDE



## KEY BOARD - COMPONENT SIDE



## KEY BOARD - COPPER SIDE



## PRE-OUT BOARD- COPPER SIDE

