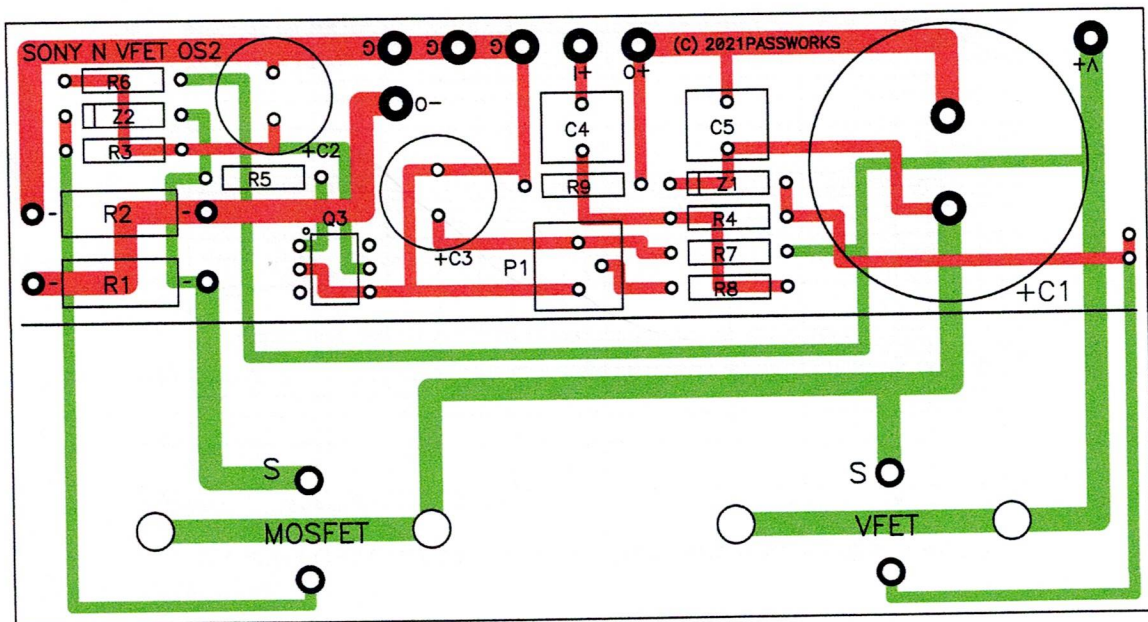
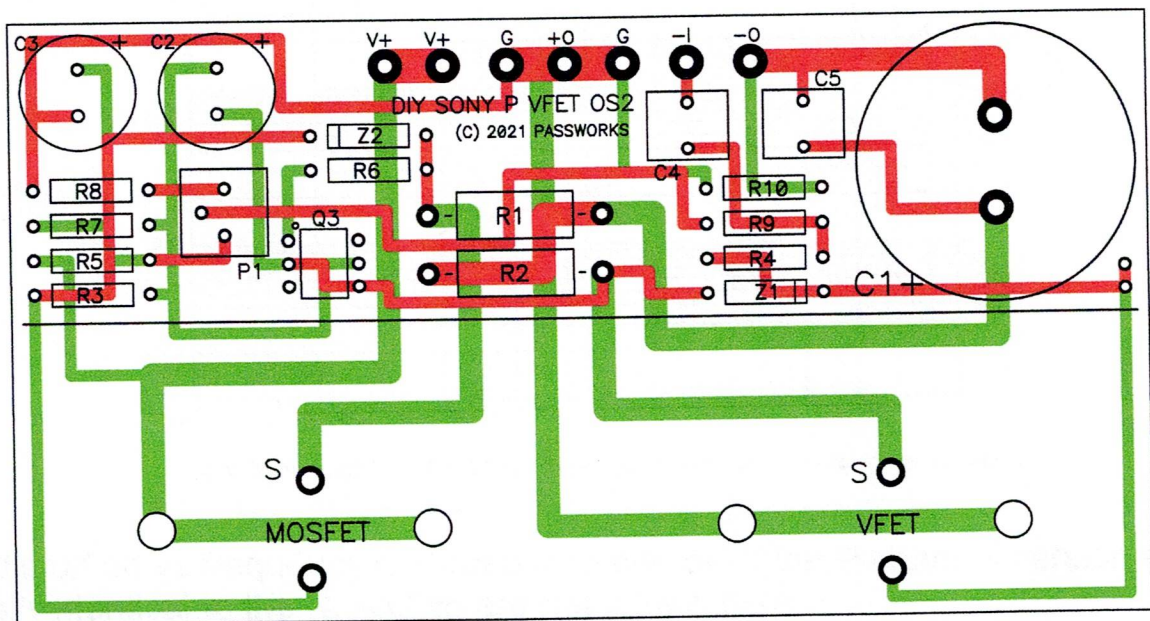


The circuit boards, red is top layer, green is bottom:



DIY SONY N CHANNEL VFET PC BOARD



DIY SONY P CHANNEL VFET PC BOARD

Like last year's project you will want to note that the brackets are not identical, so when you go to mount the boards to them, check that they will mount attractively in the chassis with component sides up. Do this before you mount the power transistors. Also, don't use too much force tightening the transistors down, and after you mount the power transistors check with an ohmmeter for shorts through the silicone insulators from transistor case to bracket.