

## CHAPTER 6

# Ten-watt Amplifier

An easily constructed three-stage amplifier with a rated power reserve of 10W is described in this chapter. The circuit is drawn in Fig. 1.

Several versions of the amplifier are possible. The equipment can be constructed to include volume and tone controls, when it is suitable for direct use with high-level signal sources, or it can be made without controls to be used with pre-amplifying equipment. In addition, three arrangements of the output stage are possible: normal loading, low loading and distributed loading.

The push-pull output stage of the circuit uses two Mullard output pentodes, type EL84. These yield a rated output power of 10W with a level of harmonic distortion, under normal loading conditions, of less than 0.3 %.

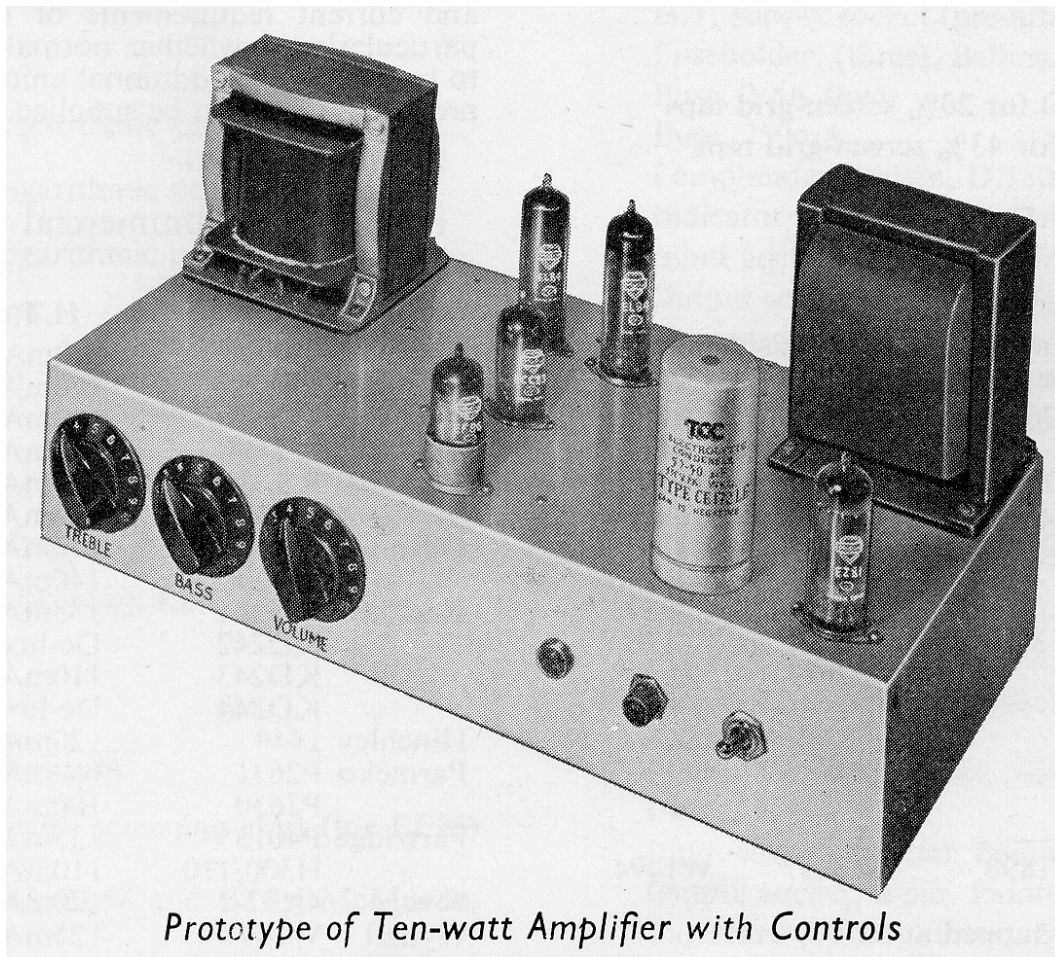
The intermediate stage consists of a cathode-coupled phase-splitting amplifier using the Mullard double triode, type ECC83, which is

preceded by a high-gain voltage amplifier using the Mullard low-noise pentode, type EF86. The intermediate and input stages are coupled directly to each other so that low-frequency phase shifts are minimised.

The optional treble and bass tone controls are shown in Fig. 1. RV28 provides continuously variable treble control from +10 to -10dB at 10kc/s and RV30 provides bass control from +11 to -5dB at 20c/s.

The level of feedback taken from the output transformer to the cathode circuit of the input stage is 26dB. The basic sensitivity of the circuit with this amount of feedback is 40mV for the rated output power, and the sensitivity when the tone controls are included is 600m V. The level of noise and hum is at least 75dB below 10W.

The rectifier used in the power-supply stage is the Mullard full-wave rectifier type EZ81.



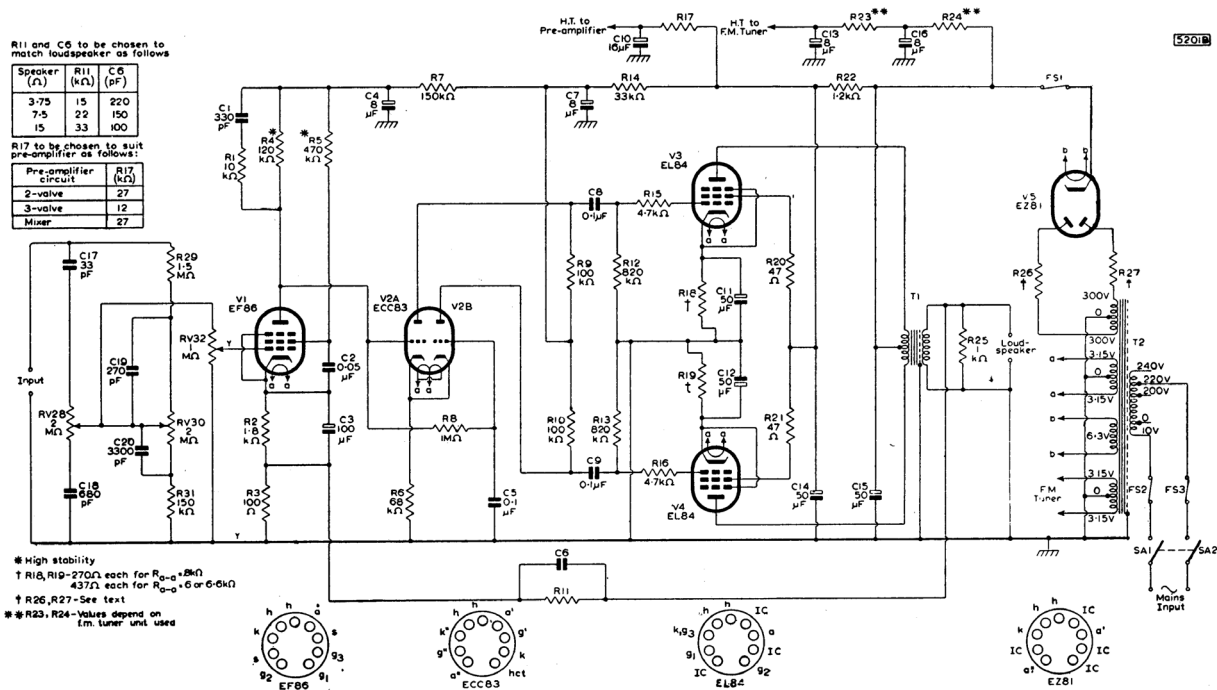


Fig. 1—Circuit diagram of 10W amplifier. (For version without controls, the signal is taken directly to the control grid of V1, and RV32 is replaced by a fixed resistance of 1MΩ; for distributed loading see Fig. 2.)

## LIST OF COMPONENTS

### Output Transformer

Primary Impedance:

Low loading,	6kΩ
Normal loading,	8kΩ
Distributed loading,	6.6kΩ for 20% screen-grid taps 8kΩ for 43% screen-grid taps

### Mains Transformer T2

The choice of mains transformer depends on various voltage and current requirements of the circuit to be constructed, particularly on whether normal or low-loading conditions are to be used and if additional units such as an f.m. tuner unit or a pre-amplifier are to be supplied.

### Commercial Components

Manu- facturer	Type No.			
	Low Loading	Normal Loading	Distributed Loading	
			20%	43%
Colne	03096	03095	03098	03097
Eldon	—	—	546A	546
Elstone	OT/6	OT/8	—	OT/ML
Gardners	*AS.7015	—	—	AS.7012
Gilson	W.O.696B	W.O.696A	—	W.O.892
Haddon	—	—	—	KD245
Hinchley	1533	1376	1533	1376
Parmeko	*P2629	—	P2643	P2642
Partridge	*P3667	—	—	P4131
	—	—	—	P4014
Savage	—	—	—	4A93
Transformer Equip. Ltd.	—	—	J.S.M.10	—
Wynall	W1899	W1898	W1897	W1494

\*8kΩ primary tapped at 6kΩ

### Commercial Components

Manu- facturer	Type No.	Ratings	
		H.T.	Heaters
Colne	03094	70mA 6.3V, 2.3A, ct.	6.3V, 1A
Eldon	396	120mA 6.3V, 3A, ct.	5V, 2A
Elstone	MT5/10	100mA 6.3V, 2A, ct.	0.5-6.3V, 2A
	MT/MU	120mA 2×6.3V, 2A, ct.	6.3V, 1A
Gardners	RS.3110	150mA 2×6.3V, 2A, ct.	6.3V, 1A
	RS.3103	80mA 6.3V, 2A, ct.	6.3V, 1A
Gilson	W.O.741A/B	150mA 6.3V, 5A, ct.	5V, 2A
	W.O.823	140mA 2×6.3V, 2A, ct.	6.3V, 1A
Haddon	KD241	135mA 2×6.3V, 2A, ct.	6.3V, 1A
	KD242	De-luxe potted version of KD241	
	KD243	110mA 6.3V, 2.5A, ct.	0.5-6.3V, 2A
	KD244	De-luxe potted version of KD243	
Hinchley	1440	120mA 2×6.3V, 2A, ct.	6.3V, 1A
Parmeko	P2631	60mA 6.3V, 2A, ct.	6.3V, 1A
	P2630	100mA 6.3V, 2A, ct.	5V, 2A
Partridge	P4013	135mA 2×6.3V, 2A, ct.	6.3V, 1A
	H300/110	110mA 6.3V, 2.5A, ct.	0.5-6.3V, 1A
Savage	4A97-1	120mA 6.3V, 2.5A, ct.	5V, 2A
Wynall	W1497	125mA 2×6.3V, 2A, ct.	0.5-6.3V, 1A

## LIST OF COMPONENTS (continued)

### Resistors

Circuit ref.	Value	Tolerance (± %)	Rating (W)
R1	10 kΩ	10	$\frac{1}{4}$
R2	1.8kΩ	10	$\frac{1}{4}$
R3	100 Ω	5	$\frac{1}{4}$
R4	120 kΩ	10	$\frac{1}{4}$
R5	470 kΩ	10	$\frac{1}{2}$
R6	68 kΩ	10	1
R7	150 kΩ	10	$\frac{1}{4}$
R8	1 MΩ	10	$\frac{1}{4}$
R9	100 kΩ	10	$\frac{1}{4}$
R10	100 kΩ	10	$\frac{1}{2}$
R11			
for 3.75Ω speaker	15 kΩ	5	$\frac{1}{2}$
for 7.5Ω speaker	22 kΩ	5	$\frac{1}{2}$
for 15Ω speaker	33 kΩ	5	$\frac{1}{2}$
R12	820 kΩ	10	$\frac{1}{4}$
R13	820 kΩ	10	$\frac{1}{4}$
R14	33 kΩ	10	$\frac{1}{4}$
R15	4.7kΩ	20	$\frac{1}{4}$
R16	4.7kΩ	20	$\frac{1}{4}$
R17			
for 2-valve pre-amp	27 kΩ	10	$\frac{1}{2}$
for 3-valve pre-amp	12 kΩ	10	$\frac{1}{4}$
for input mixer	27 kΩ	10	$\frac{1}{2}$
R18			
for normal loading	270 Ω	5	3
for low loading	390 + 47 Ω	5	3
R19			
for normal loading	270 Ω	5	3
for low loading	390 + 47Ω	5	3
R20	47 Ω	20	$\frac{1}{4}$
R21	47 Ω	20	$\frac{1}{4}$
R22	1.2kΩ	10	1
R23, R24			
values depend on f.m. tuner		20	3
R25	1 kΩ	20	$\frac{1}{2}$
R26, R27			
values depend on mains transformer		10	3
R33	1 MΩ	20	$\frac{1}{4}$
(For control network only)			
RV28	2 MΩ logarithmic potentiometer		
R29	1.5MΩ	10	$\frac{1}{4}$
RV30	2 MΩ logarithmic potentiometer		
R31	150 kΩ	10	$\frac{1}{4}$
RV32	1 MΩ logarithmic potentiometer		

1. High stability, cracked carbon
2. Matched to within 5%
3. Preferably matched to within 5%
4. In place of volume control RV32 in control-less amplifier

### Valves

Mullard EF86, ECC83, EL84 (two), EZ81 (EZ80)

### Valveholders

B9A (noval) nylon-loaded with screening skirt (for EF86)  
McMurdo, XM9/UC.1  
B9A (noval) (four for ECC83, EL84 and EZ81) McMurdo,  
BM9/U

### \* Capacitors

Circuit ref.	Value	Description	Rating (V)
C1	330 pF	silvered mica <sup>5</sup>	
C2	0.05μF	paper	350
C3	100 μF	electrolytic	12
C4	8 μF	electrolytic	250
C5	0.1 μF	paper	350
C6			
for 3.75Ω speaker	220 pF	silvered mica <sup>5</sup>	
for 7.5Ω speaker	150 pF	silvered mica <sup>5</sup>	
for 15Ω speaker	100 pF	silvered mica <sup>5</sup>	
C7	8 μF	electrolytic	350
C8	0.1 μF	paper	350
C9	0.1 μF	paper	350
C10	16 μF	electrolytic	350
C11	50 μF	electrolytic	25
C12	50 μF	electrolytic	25
C13	8 μF	electrolytic	350
C14, C15	50 + 50 μF	double electrolytic	350
C16	8 μF	electrolytic	350
(For control network only)			
C17	33 pF	silvered mica <sup>5</sup>	
C18	680 pF	silvered mica <sup>5</sup>	
C19	270 pF	silvered mica <sup>5</sup>	
C20	3300 pF	silvered mica <sup>5</sup>	

5. Tolerance: ± 10%
6. Tolerance: ± 5%

### Miscellaneous

(for circuit with controls)

Mains input plug and socket, 3-pin. Bulgin, P.340  
Mains switch, 2-pole. N.S.F., 8370/B3  
Mains selector. Clix CTSP/2 + P.61  
H.T. supply socket (f.m. tuner), 4-pin. Elcom, S.04  
H.T. supply socket (pre-amplifier), 6-pin. Elcom, S.06  
Fuseholder, (three). Belling Lee Minifuse, L.575  
Fuse, 2.5A (two)  
Fuse, 250mA  
Lampholder. Bulgin, D.180/Red  
Indicator lamp, 6.3V, 0.04A, M.G.S.  
Input socket, coaxial. Belling Lee, L.604/S  
Output socket and plug, 2-pin. Bulgin, P.350  
Tagboard (10-way). Bulgin, C.114  
Tagboard (5-way). Bulgin, C.109  
Pointer knob (three). Bulgin K.370

### Miscellaneous

(for circuit without controls)

Mains input plug and socket, 3-pin miniature. Bulgin, P.360  
Mains voltage selector, fused. Clix, VSP393/0 + P.62/2  
H.T. supply plug and socket (two), 6-pin miniature.  
Bulgin, P.194  
Fuseholder, Belling Lee Minifuse, L.575  
Fuse, 250mA  
Input socket, coaxial. Belling Lee, L.734/S  
Output socket, 2-pin. Painton, 313263 (plug, 313260)  
Tagboard (10-way) (two). Bulgin, C.125; Denco

## CIRCUIT DESCRIPTION

### Input Stage

The first stage of amplification, is provided by the EF86 in a circuit giving a voltage gain of about 150 times. The negative-feedback voltage from the secondary winding of the output transformer is introduced across the  $100\Omega$  resistor R3 in the cathode circuit. Because of the high gain in this stage, any excessive noise will lower the quality of the output from the speaker considerably and so high-stability, cracked-carbon resistors are used for the anode and screen-grid circuits. The EF86 is coupled directly to the phase splitter to reduce the phase shift at low frequencies. A CR network (C1, R1) shunting the anode load produces an advance in phase which increases the stability of the amplifier at high frequencies.

### Intermediate Stage

The double triode type ECC83 is operated as a cathode-coupled phase splitter to provide a push-pull drive voltage for the output stage. The use of the cathode-coupled arrangement gives low distortion and facilitates direct coupling with the input stage. The voltage gain obtained with a cathode-coupled circuit is approximately half that obtainable from each valve section operated as a normal voltage amplifier. Nevertheless, it is sufficient because the amplification factor of the ECC83 is 100.

It is necessary in a cathode-coupled phase splitter for the anode load of the earthed section to be slightly higher than that of the first section if perfect balance is to be obtained. Thus R10 should ideally be slightly higher than R9, by a percentage which depends on the amplification factor of the valve. Because of the high amplification factor of the ECC83, nominally equal resistors, matched to within 5 %, cannot give rise to more than 2 % lack of balance.

At low frequencies, the presence of C5 and R8 in the grid circuit of the second triode section produces both phase and amplitude unbalance. The frequency at which the lack of balance becomes significant depends on the time constant  $C_5R_8$ , which should be as long as possible to provide maximum decoupling within the pass band of the amplifier. Adequate balance can easily be maintained in practise and the component values used in this circuit give it down to low audible frequencies.

The anode voltage of the EF86 determines the operating conditions of the phase splitter and, provided the values of the associated components are within the stated tolerances, the stage will operate correctly. If the anode voltage of the EF86 is too high, the bias on the phase splitter will be too low and grid current distortion, resulting

from overdrive on peak signals, will occur. If the anode voltage is too low, the phase splitter bias will be too high, and the stage will operate away from the linear position of the valve characteristics with a resulting increase in distortion.

### Output Stage

The output stage consists of two output pentodes, type EL84, in a cathode-biased, push-pull circuit. The anode supply voltages are taken from the reservoir capacitor C15, while the supply voltages for the screen grids and for the rest of the amplifier are taken by way of R22 and C14.

Compensation for the slightly different currents drawn by any two EL84 is achieved by using the separate cathode resistors R18 and R19. Matching of the output valves is therefore unnecessary.

The stopper resistors R15 and R16 in the control-grid leads and R20 and R21 in the screen-grid circuits have been included as a normal measure to prevent parasitic oscillations. These resistors should not be bypassed, and a close connection should be made to the tags on the valveholders.

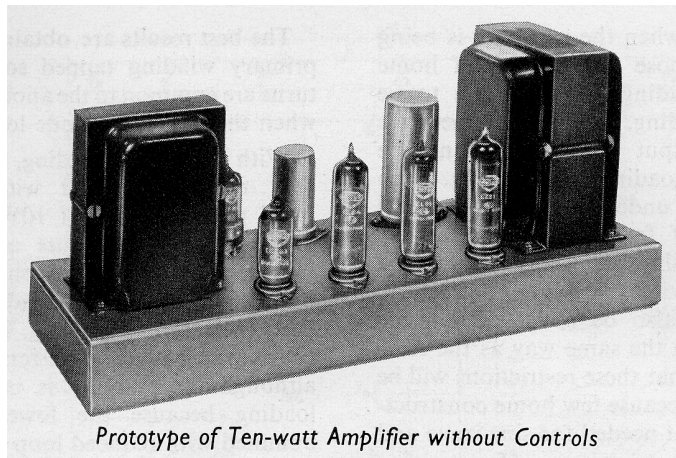
A resistor R25 having a value of about  $1k\Omega$  maybe placed across the output terminals to prevent instability from occurring when the loudspeaker is disconnected.

### Operating Conditions - Normal, Low and Distributed Loading in Output Stage

Three ways of operating the output stage are possible. These use the conditions for normal loading, low loading and distributed loading.

Normal- or low-loading conditions are determined by the choice of value for the equal cathode resistors R18 and R19 in Fig. 1. For normal loading, the value of each resistor should be  $270\Omega$ , and for low loading it should be  $437\Omega$  (that is,  $390\Omega + 47\Omega$ ). The conditions for distributed loading are achieved by including part of the anode load (that is, part of the primary winding of the output transformer) in the screen-grid circuits of the valves.

Normal loading is used when the amplifier is to be tested up to a full output power with a sine-wave input. Low loading is used only with speech and music signals when it gives reduced distortion. Distributed loading conditions are used to achieve a compromise between the performance of the two EL84 when connected as triodes and as pentodes. A sufficient power reserve is maintained, yet distortion is much less than with the usual pentode connection.



*Prototype of Ten-watt Amplifier without Controls*

### Normal and Low Loading

The normal loading conditions correspond very closely to the recommendations for class AB operation of the EL84. The difference is that, in Fig. 1, separate cathode resistors R18 and R19 (each equal to  $270\Omega$ ) are used instead of a shared resistor of  $130\Omega$ . The anode-to-anode load resistance for these conditions is  $8k\Omega$  and the anode current for zero input signal is  $2 \times 36mA$ .

The low-loading adjustment is so called because, with the increased values of cathode resistance, the anode-to-anode load resistance is reduced to  $6k\Omega$  and the quiescent current to  $2 \times 24mA$ . Although the output stage is connected for cathode-bias operation, operation with speech or music input signals approximates very closely to fixed-bias conditions. A comparison has been made in Chapter 3 between the distortion in the output stage when speech or music signals are used with normal and low loading conditions and this comparison is shown in Fig. 1 on page 19.\*

Curves 1 and 3 in that figure have been plotted for fixed bias conditions. Curve 1 shows that distortion increases seriously above 10W when normal loading is used. Curve 3 is for low loading and illustrates the lower level of distortion to be achieved with this adjustment. Curve 2 has been plotted for cathode bias and therefore refers to a sine-wave input. The curve is for normal loading because this is required for sine-wave testing up to the maximum output.

With speech or music inputs, the maximum rated power of the amplifier is only required in the output stage for a small part of the time, the average requirement being comparatively low. However, a large power reserve must be available to cater for the widely differing sound levels which can occur.

The h.t. current consumption is smaller when the output stage is adjusted for low loading. Consequently, the standing dissipation in this stage is reduced from 11W at each anode with normal loading to 7.5W at each anode. The valves are thus being run well below the maximum anode-dissipation rating of 12W. The h.t. current requirement is reduced with low loading so that the mains transformer rating can be lower if the amplifier is to be used permanently with the low-loading adjustment.

Larger peak currents are produced in the output stage under low-loading conditions than with normal class AB operation. With speech or music inputs, these peaks are of short duration. They are supplied by the reservoir capacitor C15 which is large enough to provide satisfactory smoothing. When the amplifier is at the point of overload on a peak signal, the momentary fall in line voltage from a nominal value of 320V should not be more than 2V.

As the current in the output stage increases, the bias voltages across the cathode resistors also increase at a rate determined by the time constants of the bias network. It is unlikely that this increase will exceed 1V. The working conditions of the output stage are such that the output valves are driven back into a region where lower distortion is obtained. As a result of this change in bias, a variation in gain will occur, but the distortion introduced by gain variation is held to a low level by the large amount of negative feedback. The total effect, therefore, is to improve the performance at peaks of output power.

It will be realised that, when the amplifier is being used for its primary purpose as a means of home entertainment, the low-loading adjustment is to be preferred to normal loading. However, sine-wave testing up to the full output power should not be undertaken with the low-loading arrangement. Such testing should only be undertaken with normal loading. Measurements of frequency response may be made with low-level sinusoidal inputs provided the output power does not exceed 1 to 1.5W and square-wave testing may also be undertaken if the signal is again restricted in the same way as the sine-wave input. It is not felt that these restrictions will be of very great significance because few home constructors will have the equipment needed for sine-wave and square-wave testing.

### Distributed Load .

The arrangement of the output stage for operation under conditions of distributed load is shown in Fig. 2. The screen-grid resistors R20 and R21 are disconnected from C14 in Fig. 1 and are connected to the tapplings provided on the primary winding of the output transformer. The centre tap of the primary winding is connected, as before, to the reservoir capacitor C15. The dropper resistor R22 in the h.t. line no longer carries the screen-grid current and so is increased from  $1.2k\Omega$  to  $5.6k\Omega$  to maintain the same d.c. conditions in the first two stages of the amplifier.

The best results are obtained with each half of the primary winding tapped so that about 20 % of the turns are common to the anode and

\*The distortion curves of Fig. 1, Chapter 3 are for the output stage only. Distortion in the complete amplifier is discussed below.

screen-grid circuits, when the anode-to-anode loading should be 6.6k $\Omega$ .

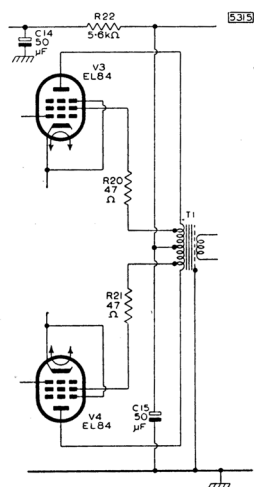


Fig. 2—Arrangement of output stage for distributed loading

With distributed loading, total distortion is reduced very much compared with normal loading. The rated power reserve of 10W is maintained although overloading now occurs at 11W instead of 14W. However, the rate at which distortion increases with output power after overloading is less with distributed than with normal loading. The frequency response of the amplifier is the same for either method of loading, although the stability is improved with distributed loading because the lower level of distortion is obtained with reduced loop gain.

### Negative Feedback

The level of negative voltage feedback taken from the secondary winding of the output transformer to the cathode circuit of the input valve is 26dB. The output impedance with feedback is 0.9 $\Omega$  measured at the 15 $\Omega$  output terminals. This gives a satisfactory damping factor of about 17 (that is, 15/0.9).

### Power Supply

The power-supply stage shown in Fig. 1 uses the Mullard indirectly heated, full-wave rectifier, type EZ81. Adequate smoothing is achieved using the resistor R22 and the large capacitor C15 (50 $\mu$ F) so that the expense of smoothing chokes is avoided. The current supplied by the EZ81 is sufficient for any arrangement of the output stage and also allows the use of a radio tuner unit. If the low-loading version of the output stage is adopted and it is not intended to use the amplifier with an f.m. tuner unit, then the Mullard rectifier, type EZ80, can be used in place of the EZ81, but it must be emphasised that currents greater than 90mA must not be taken from the EZ80.

Limiting resistors must be included in the anode circuits of the rectifier, and their values will depend on the type of mains transformer used. The total resistance - made up of the added resistance and the effective resistance of the mains transformer - must be at least 190 $\Omega$  per anode for the EZ81 used in this particular circuit (215 $\Omega$  for the EZ 80). For most 300-0-300V mains transformers, the effective resistance is about 130 $\Omega$  so the value of R26 and R27 (in the 20 % range of preferred values) must be at least 85 $\Omega$  each (100 $\Omega$  for the EZ80). With the power supply giving an h.t. current of 80mA,

the voltage across C15 should then be near the specified 320V. The voltage across C15 must not exceed 320V at either 80mA with normal loading, ( $R_{a-a} = 8k\Omega$ ) or 60mA with low loading ( $R_{a-a} = 6 k\Omega$ ).

When an f.m. radio tuner unit is used with the amplifier, the additional h.t. current drawn will not normally exceed 35 to 40mA and the voltage across C15 will then drop to approximately 295V. This additional current should be taken from C15 by way of suitable dropping resistors R23 and R24 and should have adequate decoupling (provided by C13 and C16). In these circumstances, the overload point of the amplifier is reduced from 13 or 14W to approximately 12W.

The h.t. supply for pre-amplifiers should be taken from C14. The values of the smoothing resistor R17 given in the table in Fig. 1 are suitable for use with the pre-amplifiers of Chapters 9 and 10.

Fig. 3 (right)—Chassis details for amplifier with volume and tone controls (the sections should be bent up at 90° at all dotted lines)

- (a) Main chassis
- (b) Base
- (c) Screen

KEY TO HOLES IN CHASSIS (WITH CONTROLS)			
Hole	Dimension	Use	Type No.
A	$\frac{3}{8}$ in. dia.	2M $\Omega$ potentiometer (logarithmic)	—
B	$\frac{3}{8}$ in. dia.	2M $\Omega$ potentiometer (logarithmic)	—
C	$\frac{3}{8}$ in. dia.	1M $\Omega$ potentiometer (logarithmic)	—
D	$\frac{3}{8}$ in. dia.	Pilot lamp, Bulgin	D180/Red
E	$\frac{3}{8}$ in. dia.	Mains switch, N.S.F.	8370/B3
F	$\frac{3}{8}$ in. dia.	B9A nylon-loaded valveholder with screening skirt, McMurdo	XM9/UC1
G	$\frac{3}{8}$ in. dia.	B9A valveholder, McMurdo	BM9/U
H	$1\frac{1}{2}$ in. dia.	Electrolytic capacitor	—
I	$\frac{3}{8}$ in. dia.	Input socket, coaxial, Belling Lee	L.604/S
J	$\frac{3}{8}$ in. dia.	B9A valveholder, McMurdo	BM9/U
K	$\frac{3}{8}$ in. dia.	B9A valveholder, McMurdo	BM9/U
L	$\frac{3}{8}$ in. dia.	B9A valveholder, McMurdo	BM9/U
M	$1\frac{1}{4}$ in. dia.	Output plug, 2-pin, Bulgin	P350
N	1 in. x $\frac{3}{8}$ in.	H.T. supply socket, 6-pin, Elcom	S.06
O	$\frac{3}{8}$ in. x $\frac{3}{8}$ in.	H.T. supply socket, 4-pin, Elcom	S.04
P	$1\frac{1}{4}$ in. dia.	Mains selector, Clix	CTSP/2
Q	$\frac{7}{8}$ in. dia.	Mains fuseholder, Minifuse, Belling Lee	L.575
R	$\frac{7}{8}$ in. dia.	Mains fuseholder, Minifuse, Belling Lee	L.575
S	$1\frac{1}{4}$ in. dia.	Mains input plug, 3-pin, Bulgin	P.340
T	$\frac{7}{8}$ in. dia.	H.T. fuseholder, Minifuse, Belling Lee	L.575
Y	Drill No. 34	6 B.A. clearance hole	—

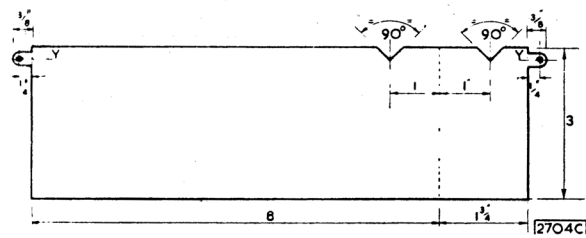
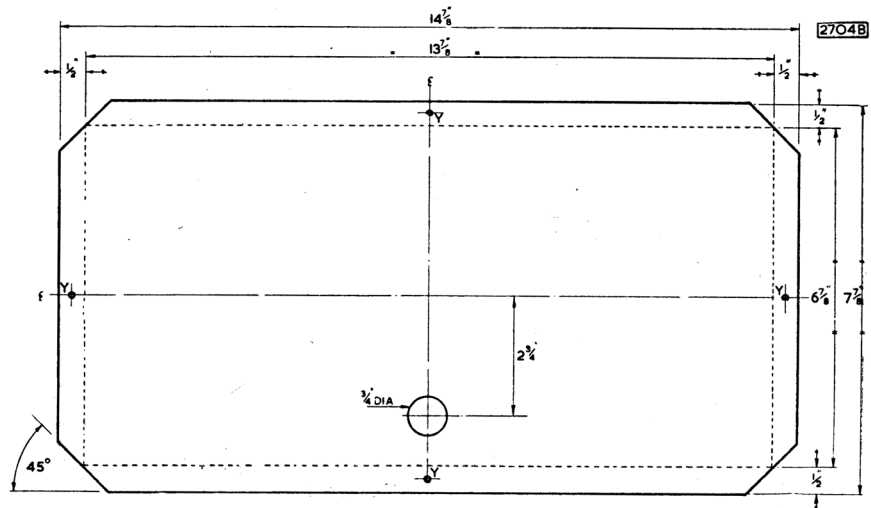
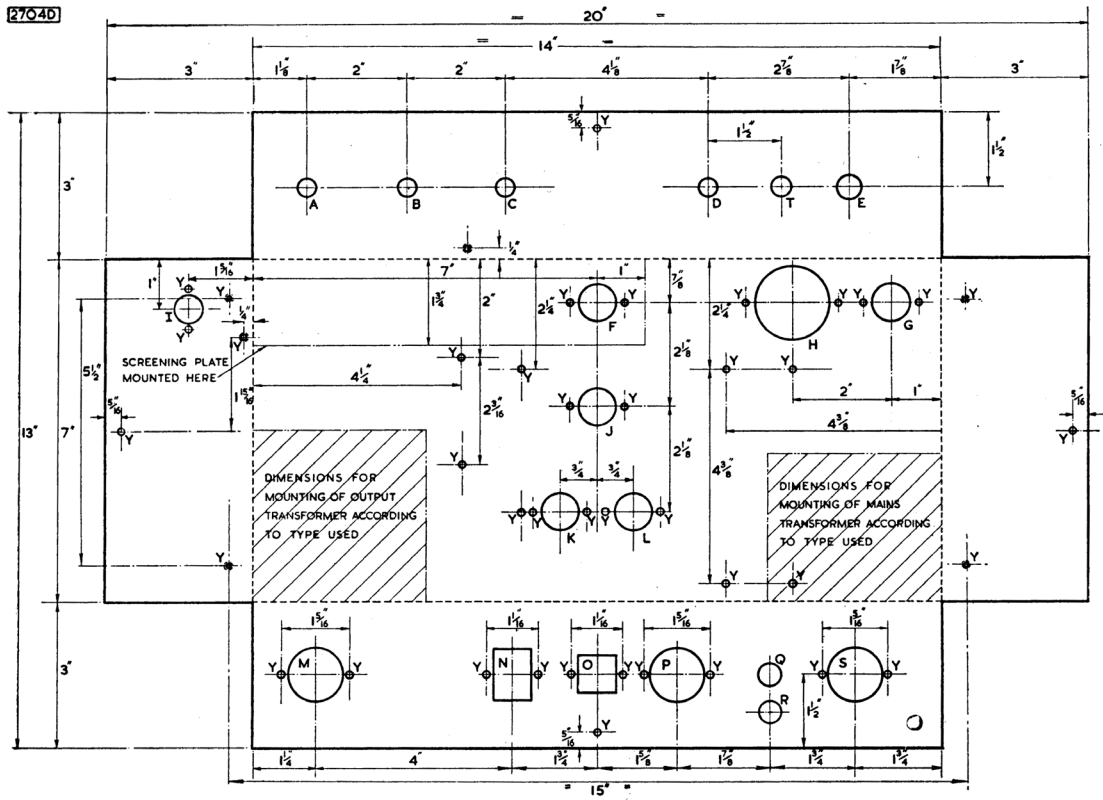
### CONSTRUCTION AND ASSEMBLY

The chassis for the 10W amplifier in which tone and volume controls are incorporated is made from three separate pieces of 16 s.w.g. aluminium sheet. Two separate pieces of 16 s.w.g. aluminium sheet are required for the version without the controls. The dimensions (in inches) of these pieces are:

- A - For version with controls
  - (a) Main chassis 20 x 13
  - (b) Base  $14\frac{7}{8}$  x  $7\frac{7}{8}$
  - (c) Screen 8 x 3
- B - For version without controls
  - (a) Main chassis 14 x  $8\frac{5}{8}$
  - (b) Base  $17\frac{1}{2}$  x  $4\frac{7}{8}$

The pieces should be marked as shown in either Fig. 3 (with controls) or Fig. 4 (without controls) and the holes should be cut as indicated. Where bending is required, it is important for the bends to be made accurately at the lines for the pieces to fit together properly on assembly.

2704B



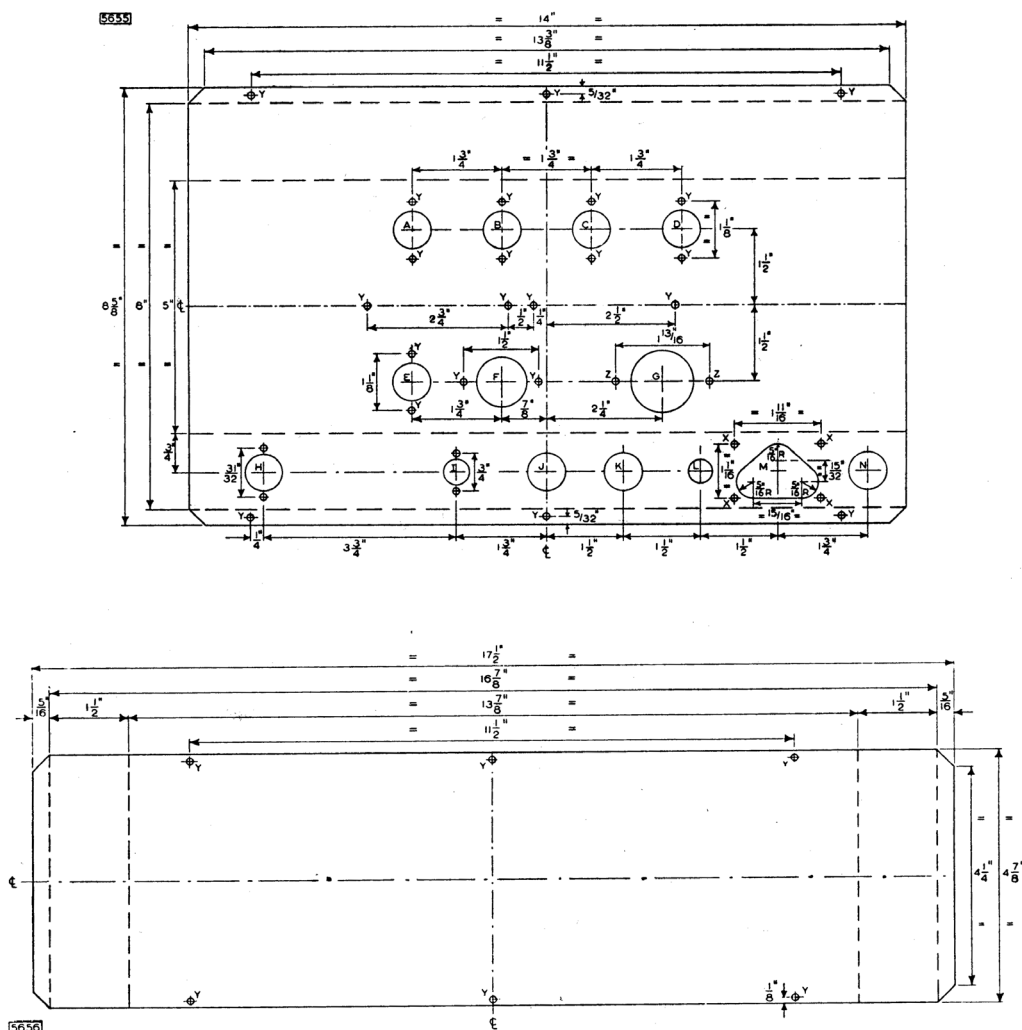


Fig. 4—Chassis details for amplifier without volume and tone controls (the sections should be bent up at 90° at the dotted lines)

(a) Main chassis

(b) Base

KEY TO HOLES IN CHASSIS (WITHOUT CONTROLS)			
Hole	Dimension	Use	Type No.
A	3/4 in. dia.	B9A valveholder. McMurdo .. ..	BM9/U
B	3/4 in. dia.	B9A valveholder. McMurdo .. ..	BM9/U
C	3/4 in. dia.	B9A valveholder. McMurdo .. ..	BM9/U
D	3/4 in. dia.	B9A valveholder. McMurdo .. ..	BM9/U
E	3/4 in. dia.	B9A nylon-loaded valveholder with screen- ing skirt. McMurdo .. ..	XM9/UC1
F	1 1/4 in. dia.	Electrolytic capacitor .. ..	—
G	1 1/4 in. dia.	Electrolytic capacitor .. ..	—
H	1 1/4 in. dia.	Output socket, 2-pin. Painton .. ..	313263
I	1 1/4 in. dia.	Input socket, coaxial. Belling Lee .. ..	L.734/S
J	3/4 in. dia.	H.T. supply plug, 6-pin miniature. Bulgin .. ..	P194
K	3/4 in. dia.	H.T. supply plug, 6-pin miniature. Bulgin .. ..	P194
L	3/4 in. dia.	Fuseholder, Minifuse. Belling Lee .. ..	L.575
M	3/4 in. dia.	Mains voltage selector, fused. Clix .. ..	VSP393/O.
N	3/4 in. dia.	Mains input plug, 3-pin miniature. Bulgin .. ..	P360
X	3 mm dia.		
Y	Drill No. 34	6 B.A. clearance hole .. ..	—

Two sets of assembly drawings are included in this chapter. One set is for the version of the amplifier which includes the volume and tone controls and the other set is for the control-less version of the amplifier. The versions differ considerably in layout, but the two arrangements will give good stability. The layout of the control-less version has been dictated to some extent by the requirements of stereophonic equipment. The narrow chassis with the sockets arranged on one side will enable two amplifiers to be used back-to-back with considerable economy of space. A symmetrical arrangement of two amplifiers can be achieved if one of the units is built as a mirror image of the other.

In the version of the amplifier having controls, the majority of resistors and small capacitors are assembled on one ten-way tagboard and one five-way board. These are drawn in Figs. 6 and 7 respectively. The position of these boards and the other components is shown in Fig. 5, and the wiring between the components is also shown in this figure. A busbar earth return is used and only one



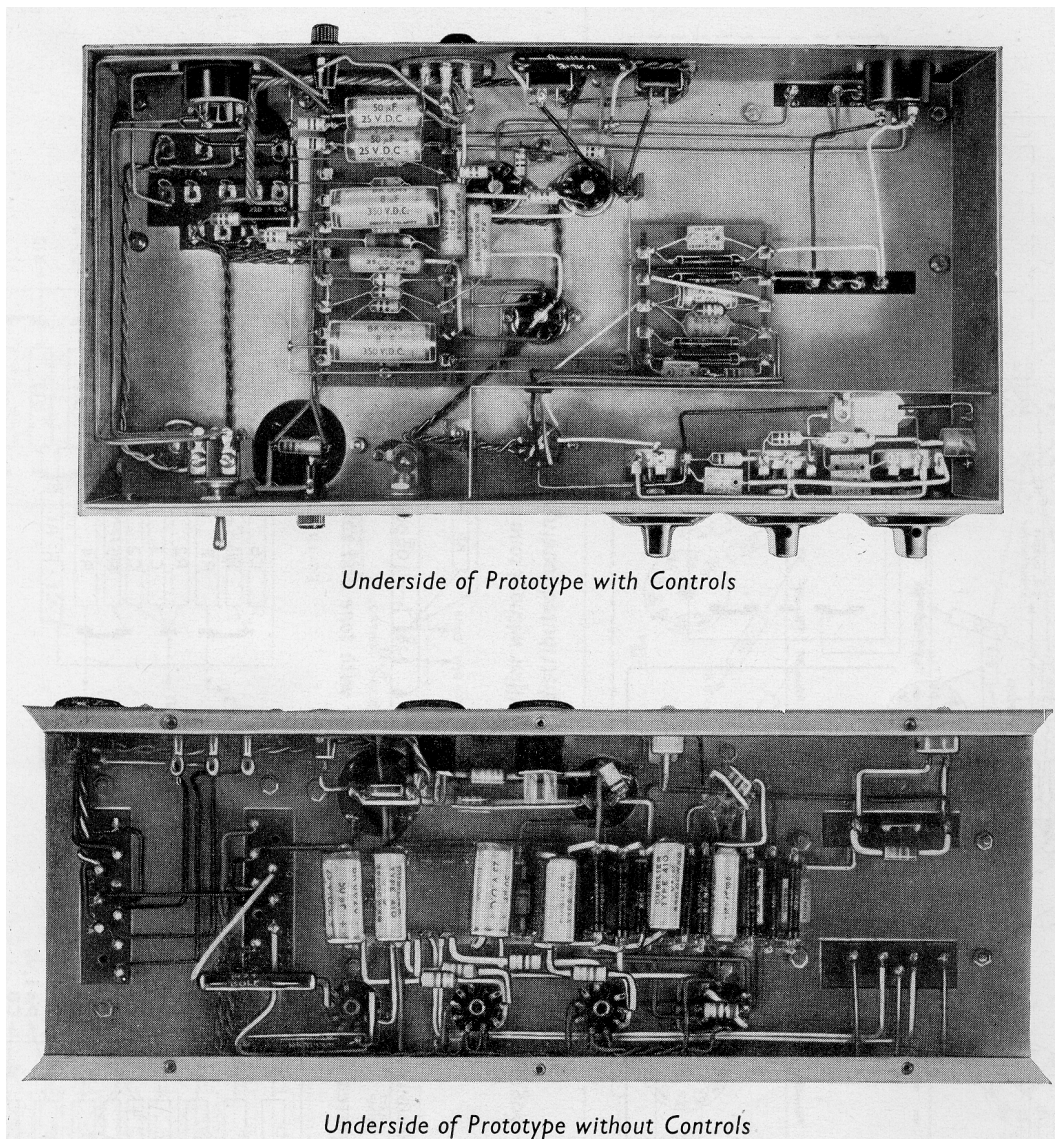
connection is made between this and the chassis. This connection is made, via the volume-control potentiometer, at the input socket. The only valveholder which needs to be skirted is that for the EF86, and it should also be nylon-loaded.

Most of the components of the control-less version of the amplifier are assembled on two ten-way tagboards and these are drawn in Figs. 8 and 9. The general layout of the components in the chassis is shown in Fig. 10. As before, a busbar earth return is used and again there is

only one connection, at the input socket, between it and the chassis. Only the valveholder for the EF86 needs to be skirted and it should also be nylon-loaded.

#### D.C. CONDITIONS

The d.c. voltages at points in the equipment should be tested with reference to Table 1. The results shown in this table were obtained using an Avometer No. 8.

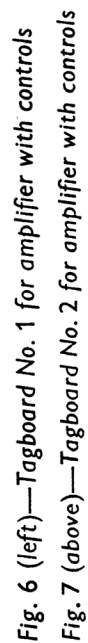
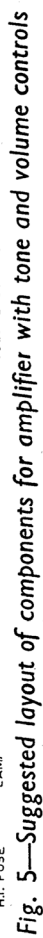


## PERFORMANCE

### Distortion

The total harmonic distortion of the prototype amplifier with normal loading and with feedback was measured at 400c/s. The variation with output power is shown in Fig. 11. The relationship between input voltage and output power is also drawn in Fig. 11. At the full rated output power, the distortion is less than 0.3 % and at about 14W it rises to 1 %

Measurements of intermodulation distortion were made in the prototype amplifier using carrier and modulating frequencies of (a) 10kc/s and 40c/s, and (b) 7kc/s and 70c/s, the ratios of the amplitudes being 1:4. The values are plotted in Fig. 12 against equivalent output power. For a stated equivalent output power, the peak value of the combined inputs is equal to the peak value of a single sine-wave input which would produce that power. For frequencies of 10kc/s and 40c/s, the intermodulation distortion (expressed in r.m.s. terms as the



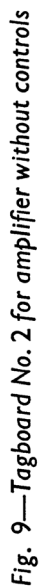
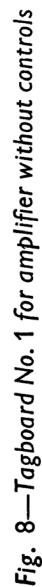


Fig. 10—Suggested layout of components for amplifier without tone and volume controls (the output stage is connected for distributed loading)



percentage of intermodulation products relative to the amplitude of the higher frequency) is better than 1.0 % at 10W equivalent output power.

The magnitude of 'beat-note' distortion has been measured with frequencies of (a) 9 and 10kc/s, and (b) 14 and 15kc/s, the amplitudes of the input signals being equal. The difference component present in the output, expressed as a percentage of either signal, is also plotted against equivalent output power in Fig. 12.

TABLE 1  
D.C. Conditions

Point of Measurement		Voltages (V)	D.C. Range of Avometer* (V)
	†C15	320	1000
	C14	305	1000
	C7	248	1000
	C4	138	1000
V3, V4 EL84	Anode	312	1000
	Screen grid	315	1000
	Cathode	12	100
V2 ECC83	1st and 2nd Anodes	200	1000
	1st and 2nd Grids	61	1000
	1st and 2nd Cathodes	63.5	1000
V1 EF86	Anode	61	1000
	Screen grid	72	1000
	Cathode	1.5	25

\*Resistance of Avometer:  
1000V-range, resistance=20MΩ  
100V-range, resistance=2MΩ  
25V-range, resistance=500kΩ

†Alternating voltage at C15 is 4V for normal loading and 2.5V for low loading.

Sensitivity

The basic sensitivity of the amplifier (that is, the sensitivity at the control grid of the EF86) is 2mV without feedback and 40mV with feedback. The sensitivity at the input terminals in Fig. 1, thus including the controls, is 600mV with feedback. The basic sensitivity at the overload point (14W output) measured with feedback is 50mV.

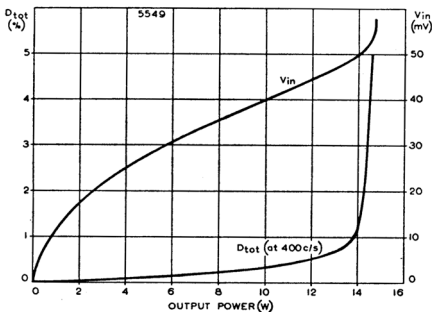


Fig. 11—Harmonic distortion and output/input characteristics

Hum and Noise

The level of background noise and hum in the prototype equipment is at least 75dB below the rated output of 10W.

Phase Shift

The phase shift in the amplifier is low. As shown in Fig. 13, the phase shift is 20° at 20c/s and at 10kc/s.

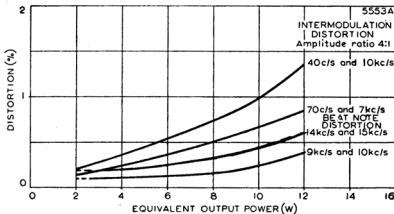


Fig. 12—Intermodulation and 'beat-note' distortion characteristics

Frequency Response

The frequency-response characteristic for an output power of 1W and the power-response characteristic for 10W output power under normal loading conditions are shown in Fig. 13. It will be seen that the frequency response is level (to within 1dB) from 5c/s to 20kc/s and the power response is level from 20c/s to 15kc/s.

The loop gain characteristic is also plotted in Fig. 13. This curve shows that 26dB of feedback are available at 1kc/s.

Output Impedance

The output impedance of the amplifier is approximately 0.9Ω for a 15Ω load. This gives an adequate damping factor of about 17.

Performance with Normal and Distributed Loading

Performance figures are given in Table 2 comparing the amplifier when a conventional pentode push-pull stage is used with the unit when distributed loading is used.

TABLE 2  
Performance with Normal and Distributed Loading

	Normal Loading	Distributed Loading	
Rated output power	10	10	W
Overload point	14	11	W
	(approx.)	(approx.)	
Basic sensitivity	40	40	mV
Harmonic distortion	0.3	0.1	%
		(approx.)	
Intermodulation distortion			
(i) 10kc/s and 40c/s	1.0	0.5	%
(ii) 7kc/s and 70c/s	0.6	0.4	%
Beat-note distortion			
(i) 9 and 10kc/s	0.25	0.25	%
	(approx.)		
(ii) 14 and 15kc/s	0.4	0.33	%
Loop gain (at 1kc/s)	26	20.5	dB

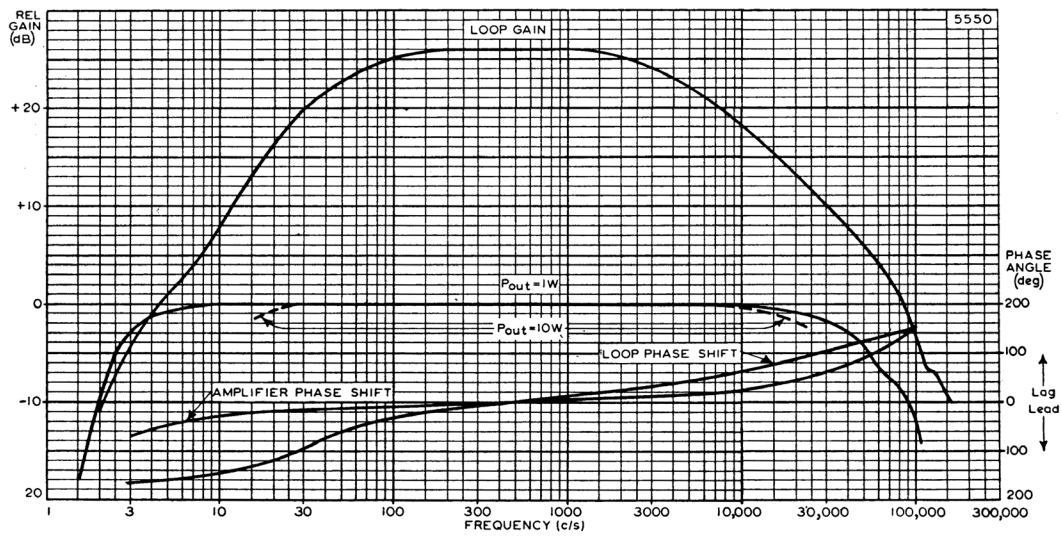


Fig. 13—Frequency response, loop-gain and phase-shift characteristics

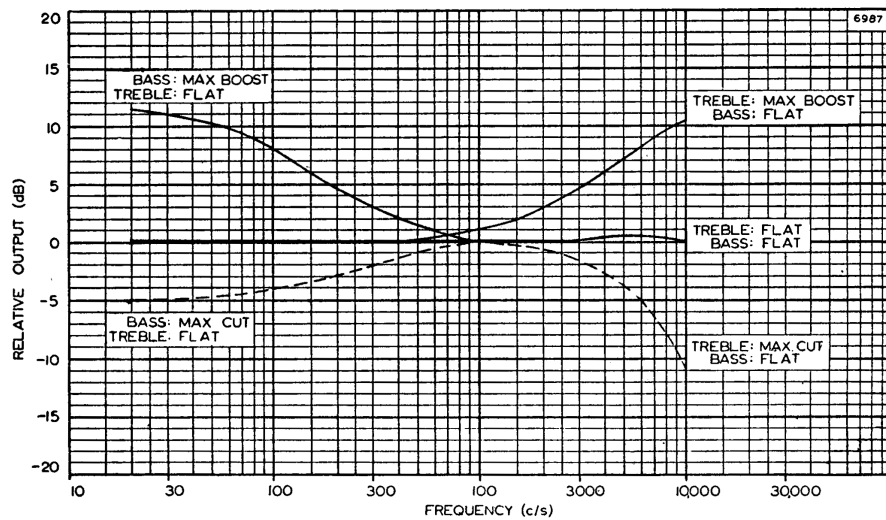


Fig. 14—Treble and bass tone-control characteristics