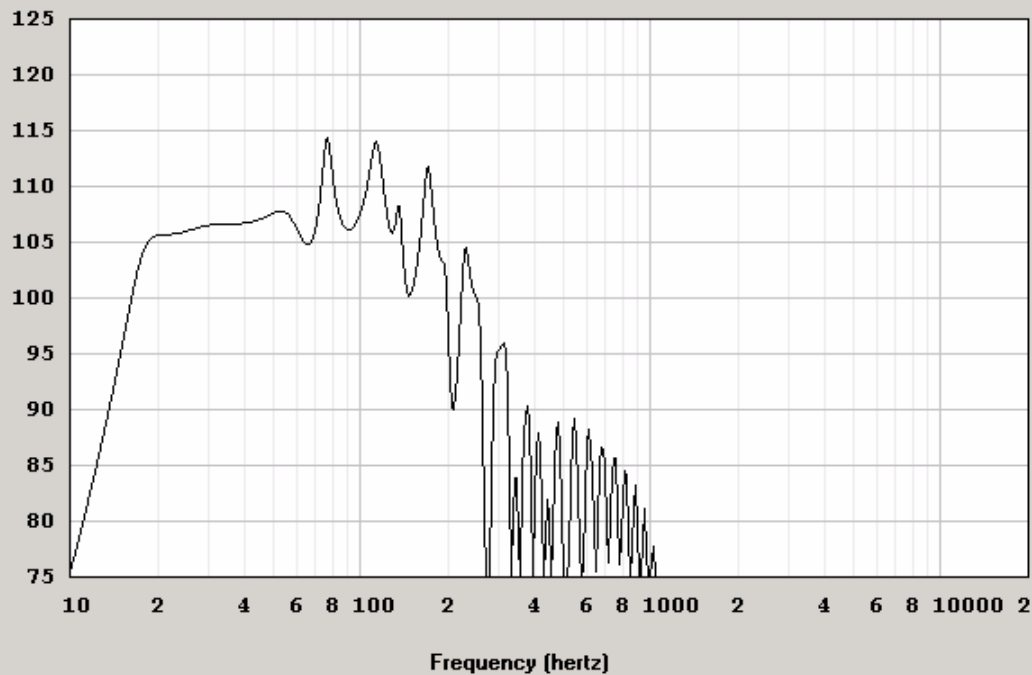


Hornresp - SPL Response

File Tools Window Help

SPL Response (dB) - Constant Directivity - Tapped Horn



Hornresp - Input Parameters

File Tools Window Help

Ang	0.5 x Pi	Eg	2.83	Rg	0.10	Fta	0.48
S1	300.00	S2	347.00	Con	22.00	F12	0.00
S2	347.00	S3	1385.00	Con	481.00	F23	0.00
S3	1385.00	S4	1432.00	Con	42.00	F34	0.00
S4	0.00	S5	0.00	L45	0.00	F45	0.00
Sd	867.10	Cms	7.03E-05	Mmd	370.11	Re	3.66
Bl	19.96	Rms	20.10	Le	3.80	Nd	1
Vrc	0.00	Fr	0.00	Vtc	0.00		
Lrc	0.00	Tal	0.00	Atc	0.00		

Comment MTX9515 - throat = Sd/3 and 3 mH inductance added

Previous Next Edit Add Delete Record 197 of 197 Calculate