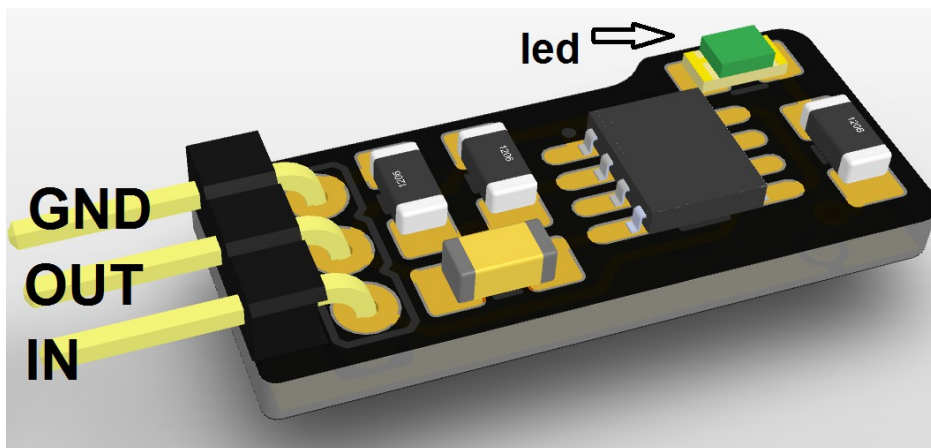
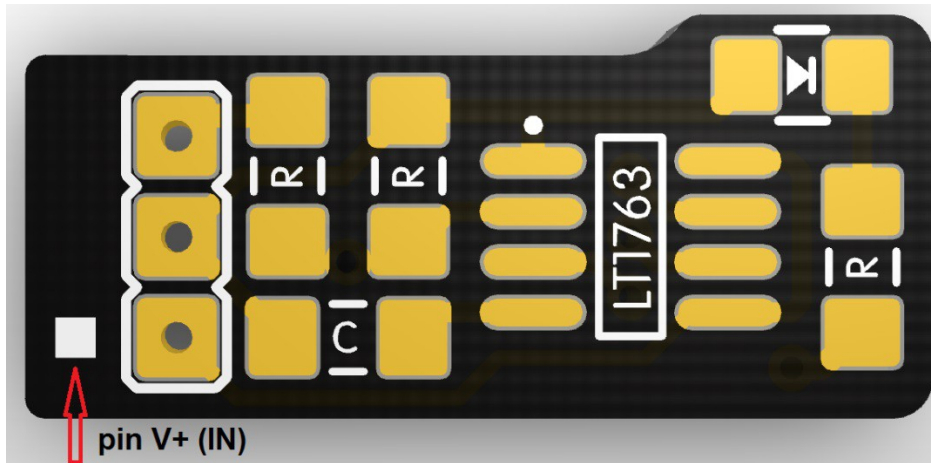


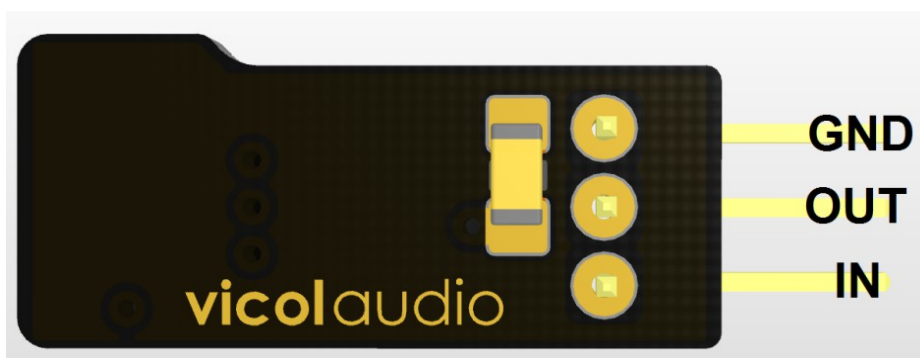
Shiga MKII Mini-regulator (minireg)

Vicol Audio Low noise LDO minireg for Black Shiga (MKII)

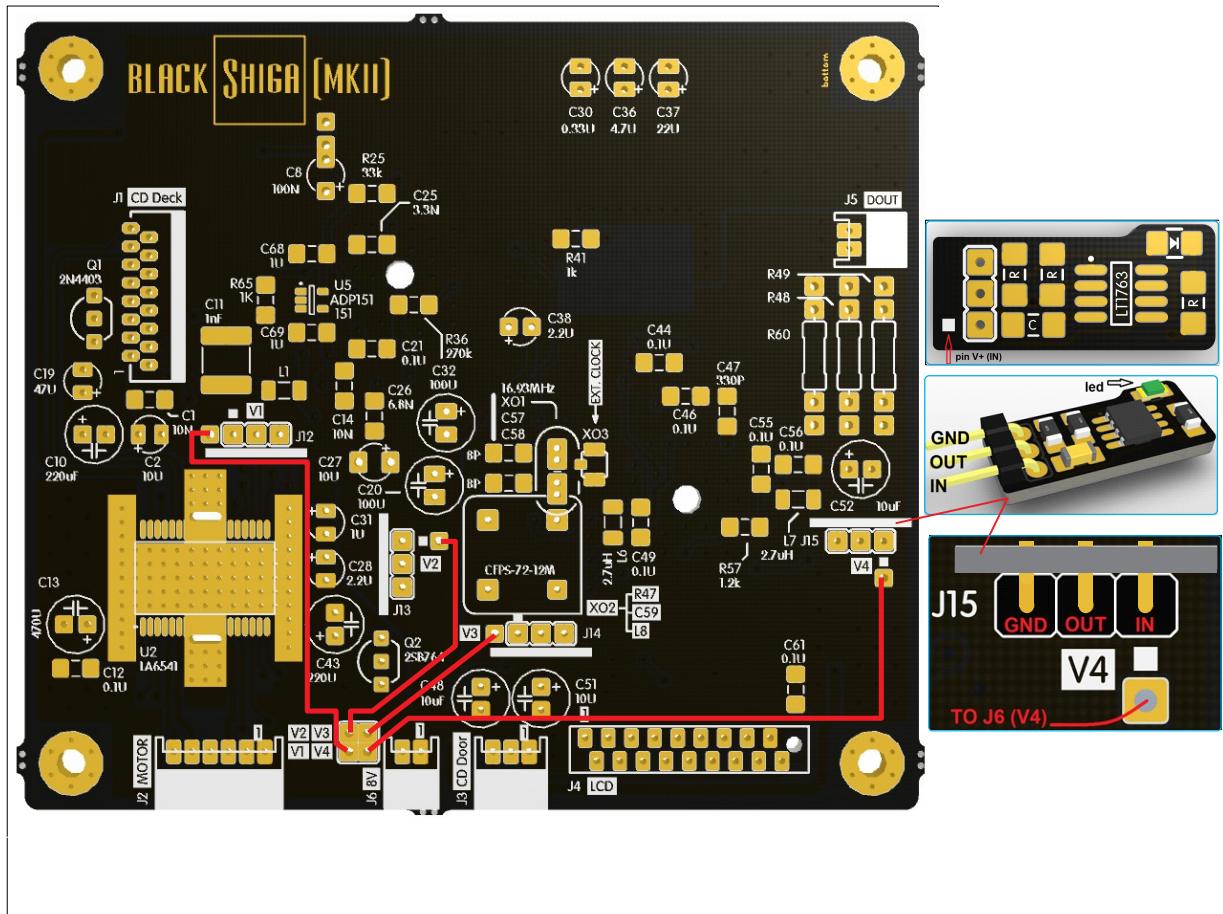
On the top side of the board you will find the white dot indicating “V+”/“IN” pin (bottom left) and the led (top right).



... and the bottom side looks as below.

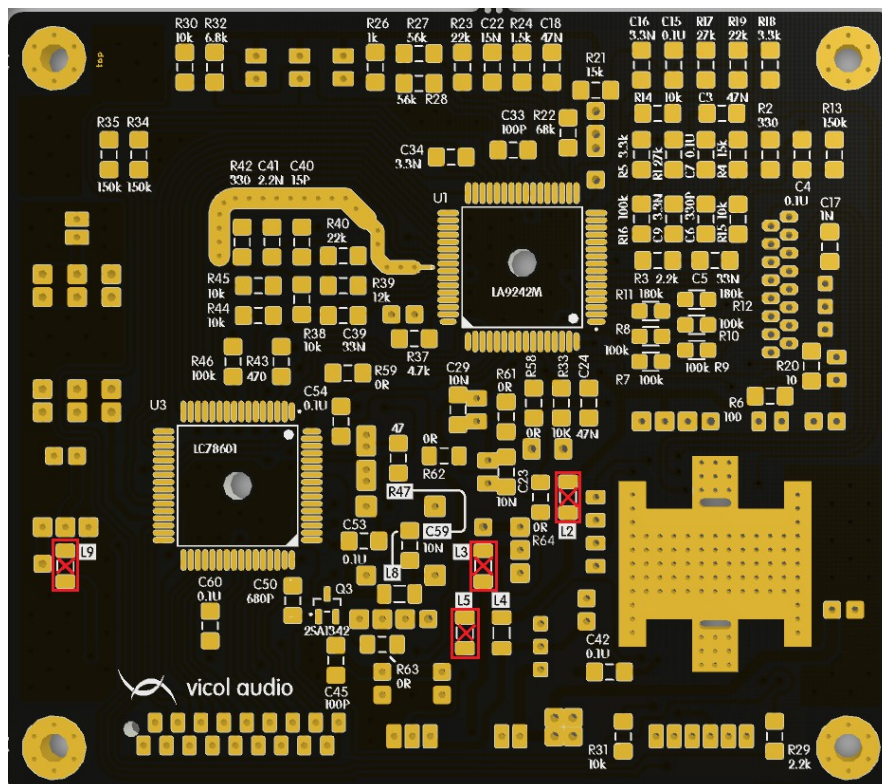


Picture below describe how to mount all 4 mini-regs. First insert each mini-reg as seen, taking pin V+ /IN as reference. Then use a small cable to link each mini-reg to 8V+ (near J6).



And for each mini-reg in use you should remove the correspondent ferrite bead: L2 corresponds to V1; L3 corresponds to V2; L5 corresponds to V3 and L9 corresponds to V4.

These are located as shown in picture below.



Note: DO NOT USE ferrites listed above if mini-regs are in place!