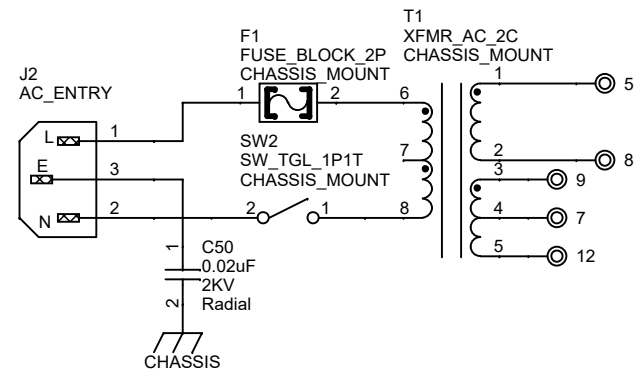
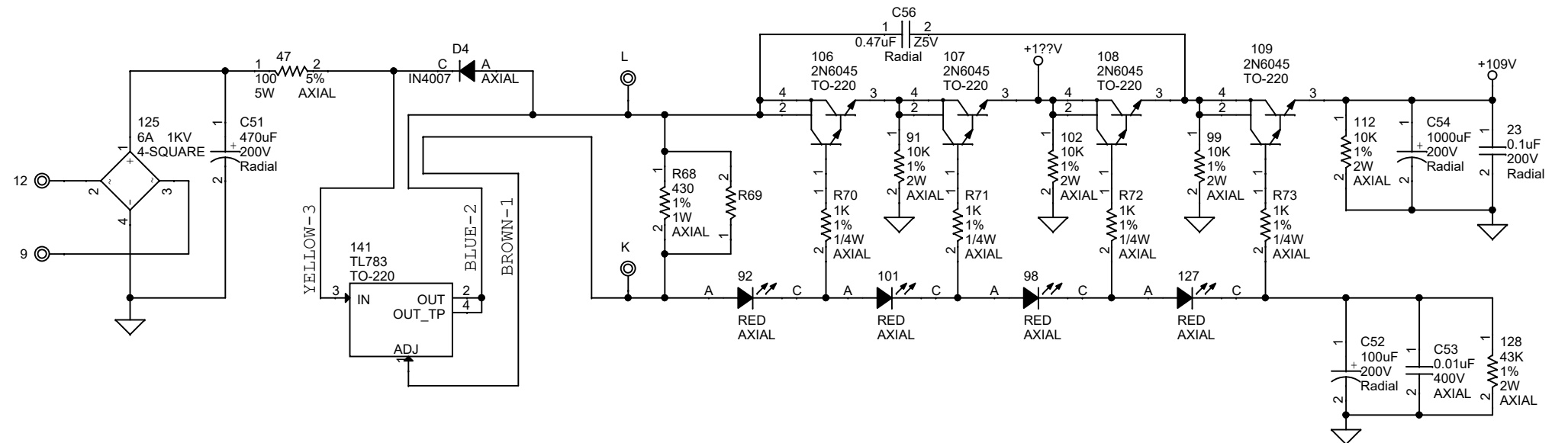


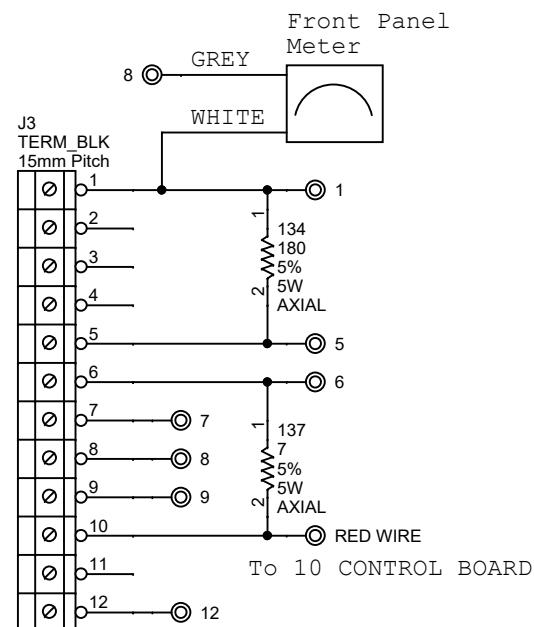
AC WIRING



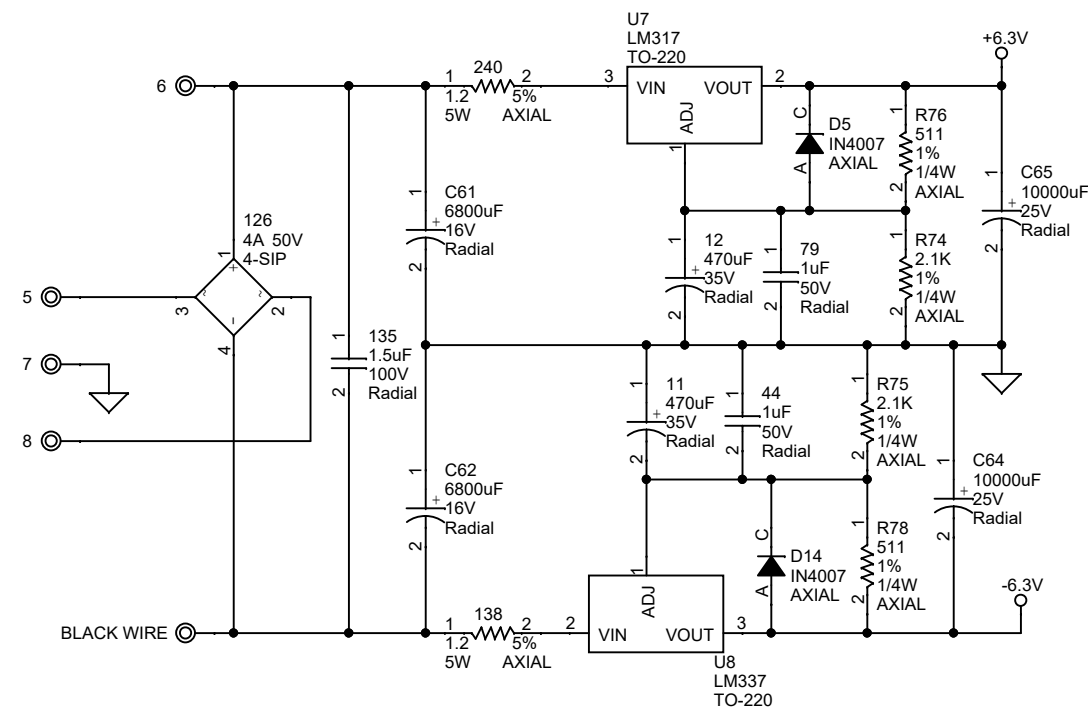
HIGH VOLTAGE POWER



AMP BOARD POWER INPUT



LOW VOLTAGE POWER

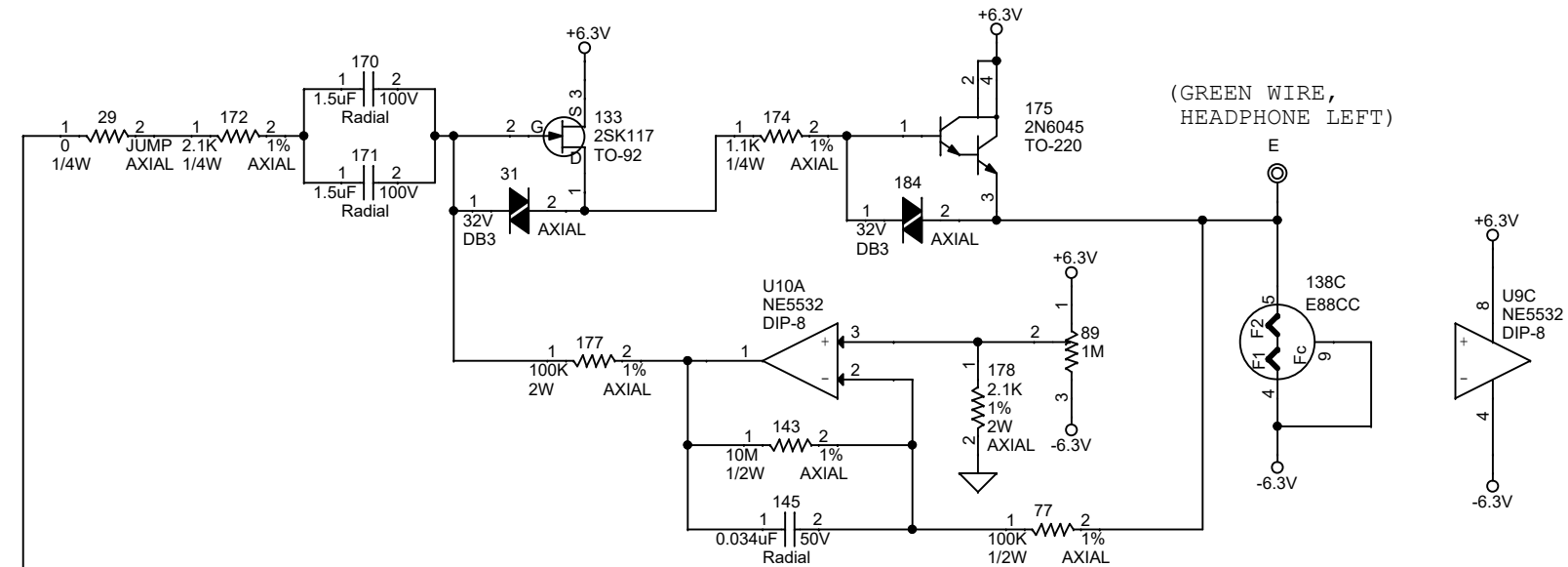


MELOS SHA GOLD, AMPLIFIER BOARD

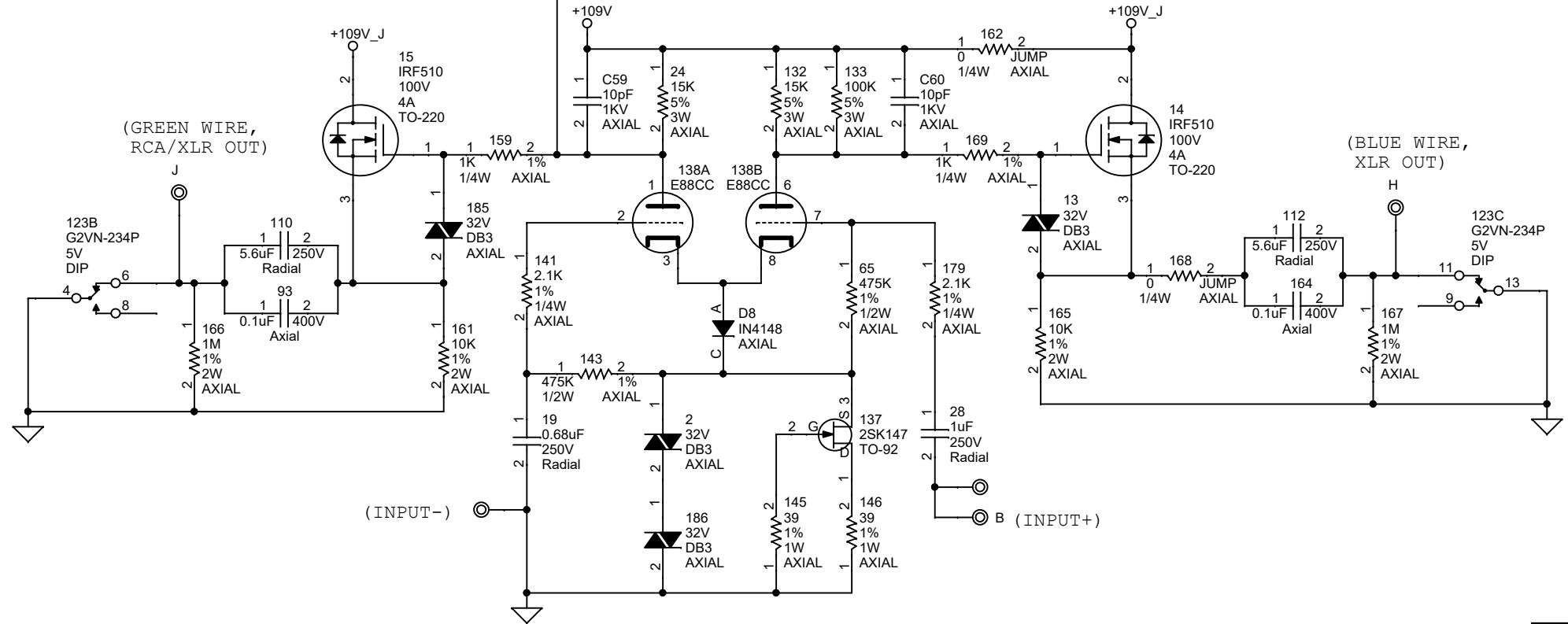
CONNECTOR. POWER SUPPLIES

DRAWN:	A.S	DATE:	07/03/2020	REV	1	SHEET	1 OF 3
--------	-----	-------	------------	-----	---	-------	--------

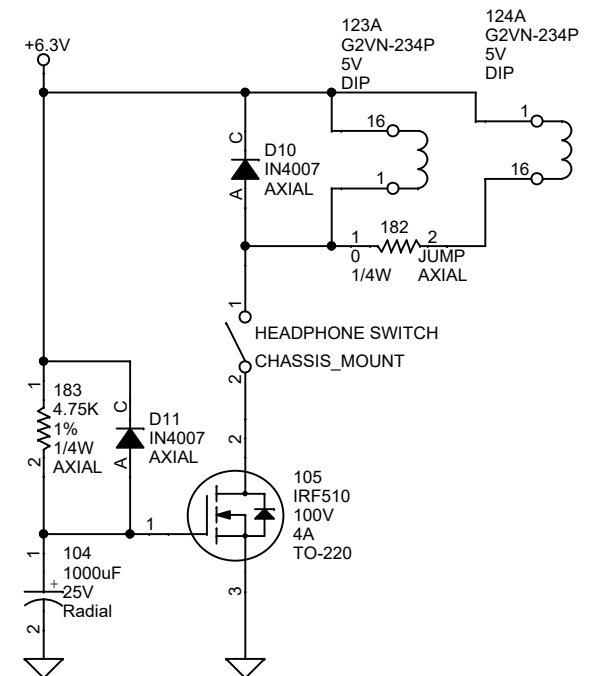
HEADPHONE AMPLIFIER -- LEFT CHANNEL



LINE STAGE AMPLIFIER -- LEFT CHANNEL



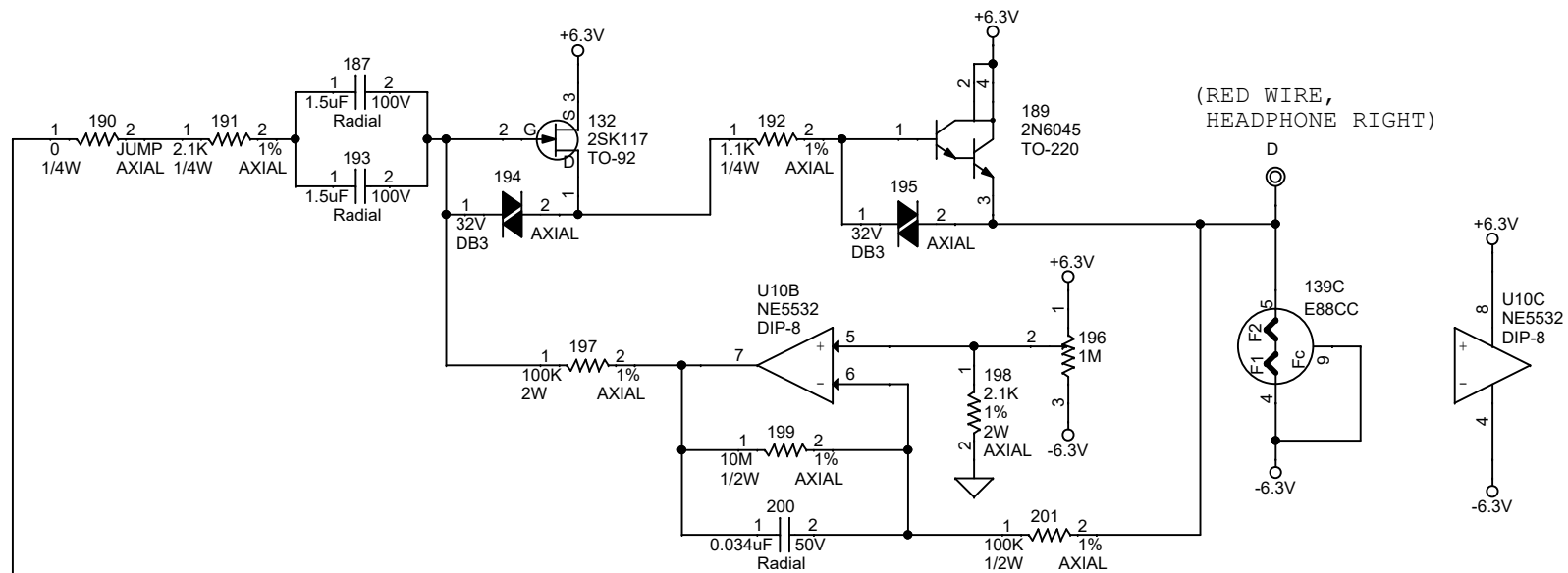
HEADPHONE MUTE CONTROL.



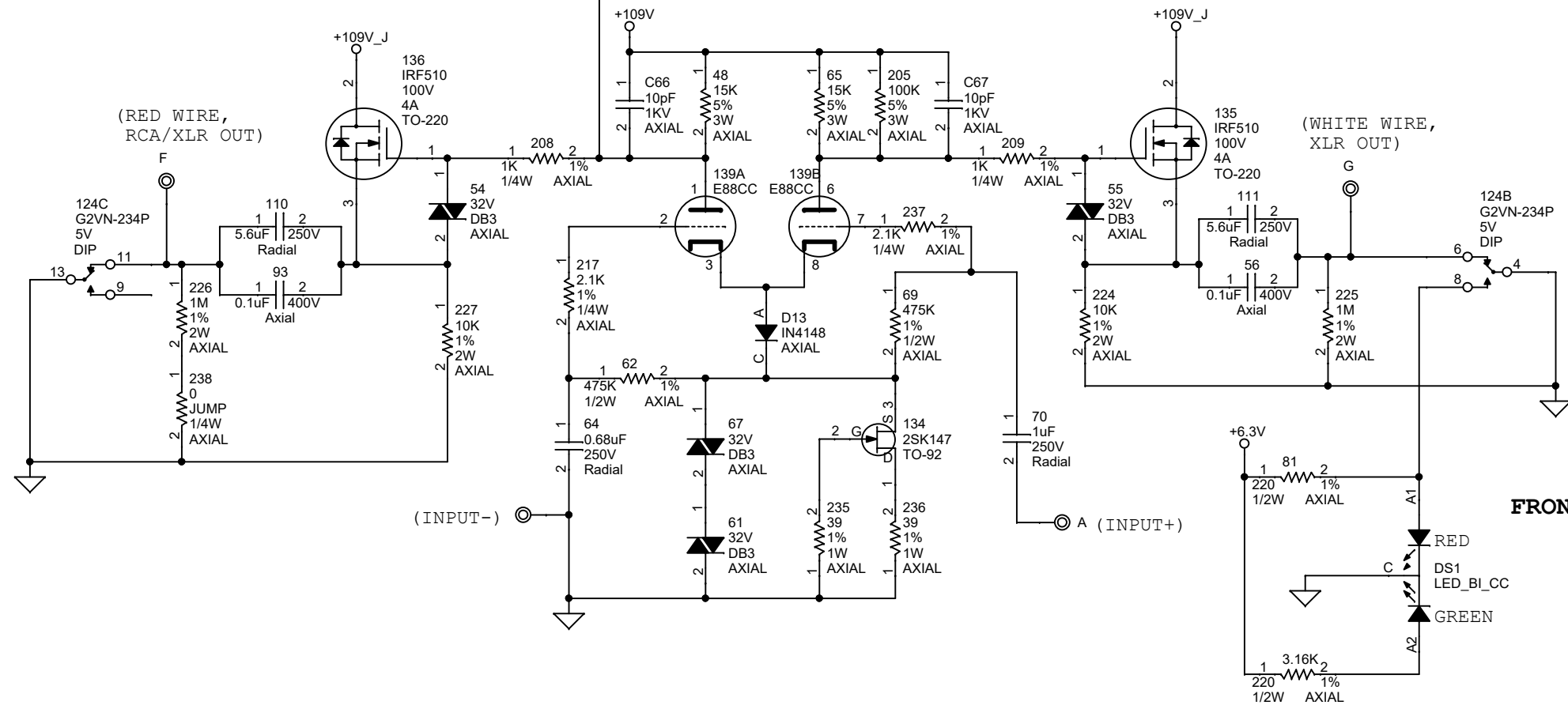
MELOS SHA GOLD, AMPLIFIER BOARD
LINE STAGE /HEADPHONE AMP, RIGHT CHANNEL

DRAWN:	A.S.	DATE:	07/03/2020	REV:	1	SHEET:	2 OF 3
--------	------	-------	------------	------	---	--------	--------

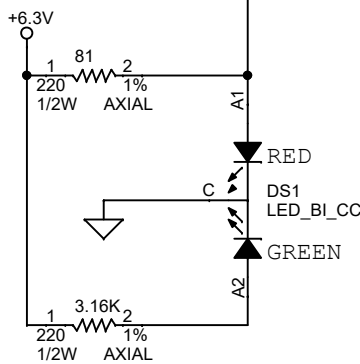
HEADPHONE AMPLIFIER -- RIGHT CHANNEL



LINE STAGE AMPLIFIER -- RIGHTT CHANNEL



FRONT PANEL STATUS LEDS



MELOS SHA GOLD, AMPLIFIER BOARD
LINE STAGE /HEADPHONE AMP, RIGHT CHANNEL

DRAWN:	YOUR NAME	DATE:	07/03/2020	REV	1	SHEET	3 OF 3
--------	-----------	-------	------------	-----	---	-------	--------