

: Amendid:

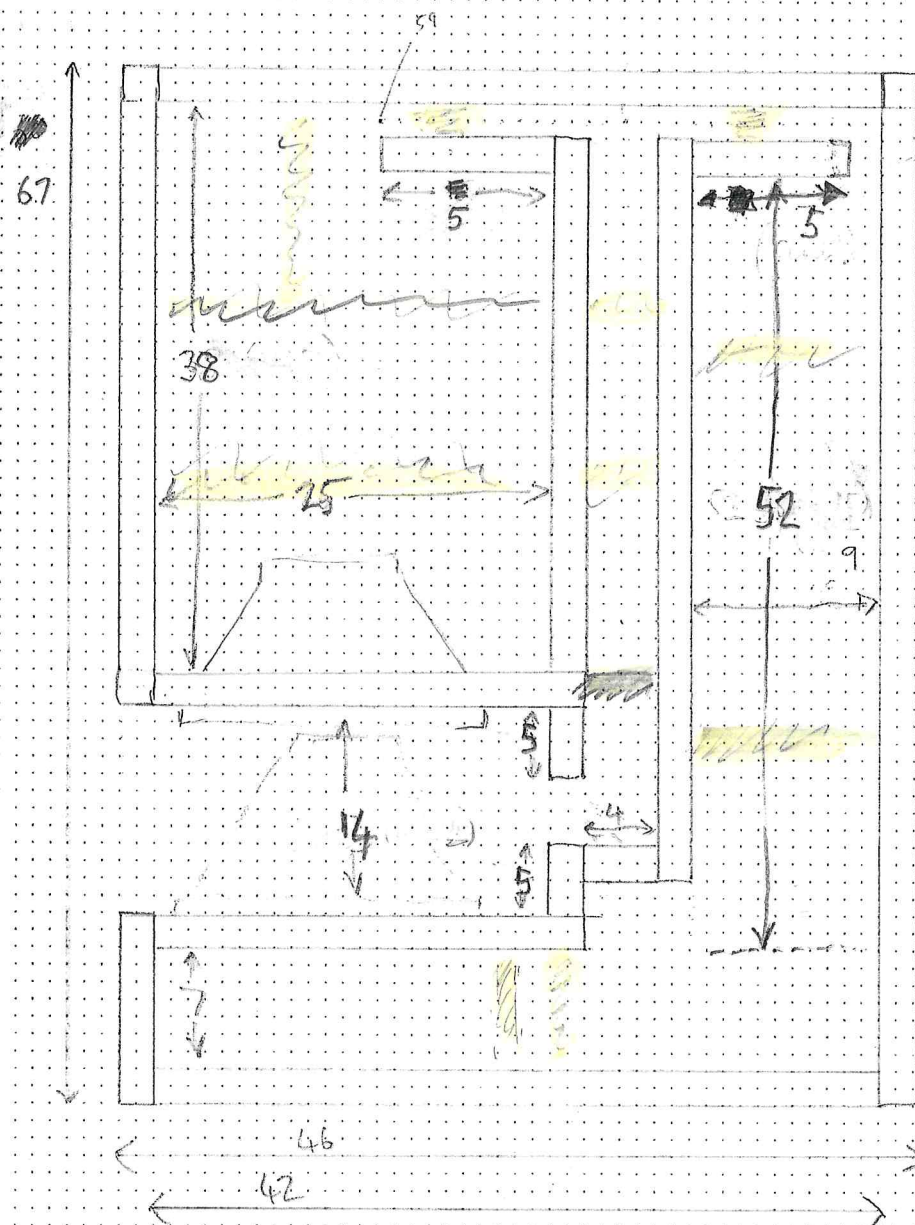
5/2024

$$\begin{aligned} L &= 19.6 \text{ l} \\ R &= 18.1 \text{ l} \\ L' &= 15.4 \text{ l} \\ R' &= 16.6 \text{ l} \end{aligned}$$

Amended
for additional
bracing

$$C = 15.4$$
$$R' = 16.6 \text{ L}$$

INTERNAL WIDTH = 25 cm



Yellow marks
brace position

Wheel $\varnothing 183 \text{ mm} \rightarrow 91.5 \text{ radius}$