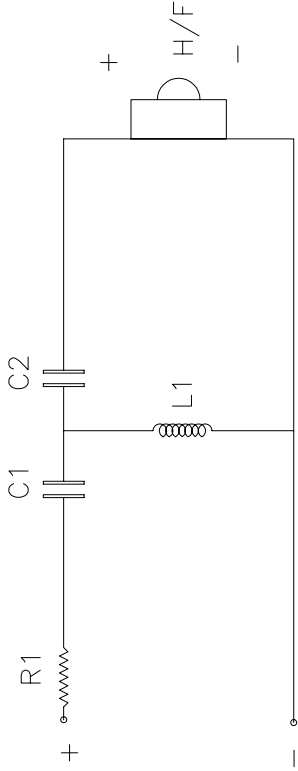


Clue to base


Item	QTY	Code N°	DESCRIPTION	Drq N°
		800 W	Complete assembly	C1707
		800-B1	Bass unit assembly	
		800-B2	Bass unit assembly	
		800-M1	M/F-H/F unit ass'y	
			BASS UNIT ASS'Y 1	
1	1		Bass cabinet B1	C1699
2	1		Grille ass'y	C1705
3	1	ZZ5304	Bass ass'y	A1737
4	1		X-OVER ass'y	A1746
5	1		Terminal plate ass'y	A1743
6	6	H1163	Screw M6x30 pan hd pozi black	
7	6	H5142	Washer	
8	6	G2127	Grommet	
9	4	H0167	Screw N°6x1/2 csk pozi	
10	1		Gasket	A1752
11	4	H0220	Screw M8x50 soc hd cap	
12	1	H1082	Screw M6x25	
13	1	H5282	Washer	
14	1	L1597	Serial N° label	A1740
15	4	H1341	Screw M8x25 soc hd cap	
			BASS UNIT ASS'Y 2	
1a	1		Bass cabinet B2	C1699
2a	1		Grille ass'y	C1705
3a	1	ZZ5304	Bass ass'y	A1737
4a	1		X-OVER ass'y	A1746
5a	1		Terminal plate ass'y	A1743
6a	6	H1163	Screw M6x30 pan hd pozi	
7a	6	H5142	Washer	
8a	6	G2127	Grommet	
9a	4	H0167	Screw N°6x1/2 csk	
10a	1	G	Gasket	A1752
11a	4	H0220	Screw M8x50 soc hd cap	
12a	1	H1082	Screw M6x25 pan hd pozi	
13a	1	H5282	Washer	
14a	1	L1597	Serial N° label	A1740
15a	1	H	Screw M8x25 soc hd cap	
			M/F-H/F UNIT ASS'Y	
16	1		Bridge Bass-M/F ass'y	C1701
17	1		M/F-H/F cabinet	C1700
18	1		Grille ass'y	C1706
19	1	ZZ5312	Tweeter ass'y	B1614
20	2	ZZ0558	M/F unit ass'y	B1360
21	16	H1171	Screw M4x20 csk hd pozi	
22	4	H8362	Grille baffle insert	
23	4	G2232	Grommet	
24	4	H5142	Washer	

Item	QTY	Code N°	DESCRIPTION	Drq N°
			M/F-H/F cont	
25	4	H1236	Screw M6x20 soc hd cap	
26	1	G	Gasket	A1749
27	1	ZX0264	M/F-H/F harness	
			BACK PANEL ASS'Y	
28	1		BACK PANEL	B1739
29	2		Terminal WBT-0700 RED	
29a	2		Terminal WBT-0700 WHITE	
30	1	ZZ5355	X-OVER ass'y H/F	A1709
31	1	ZZ5347	X-OVER ass'y M/F	A1708
32	8	H5320	Washer M5	
33	8	H5339	NUT M5	
34	1	ZX0256	Bridging harness	A1748
			BASE ASS'Y	
35	1	S4006	BASE	C1702
36	4		Rubber foot	A1750
37	4	S3999	Floor spike	A1736
38	1	C3000	Cover plate	A1704
39	6	H1988	Screw M5x10 soc hd cap	
40	6	H5320	Washer M5	
41	1	L1597	Serial N° label	A1740
42	4	G2135	Grommet	

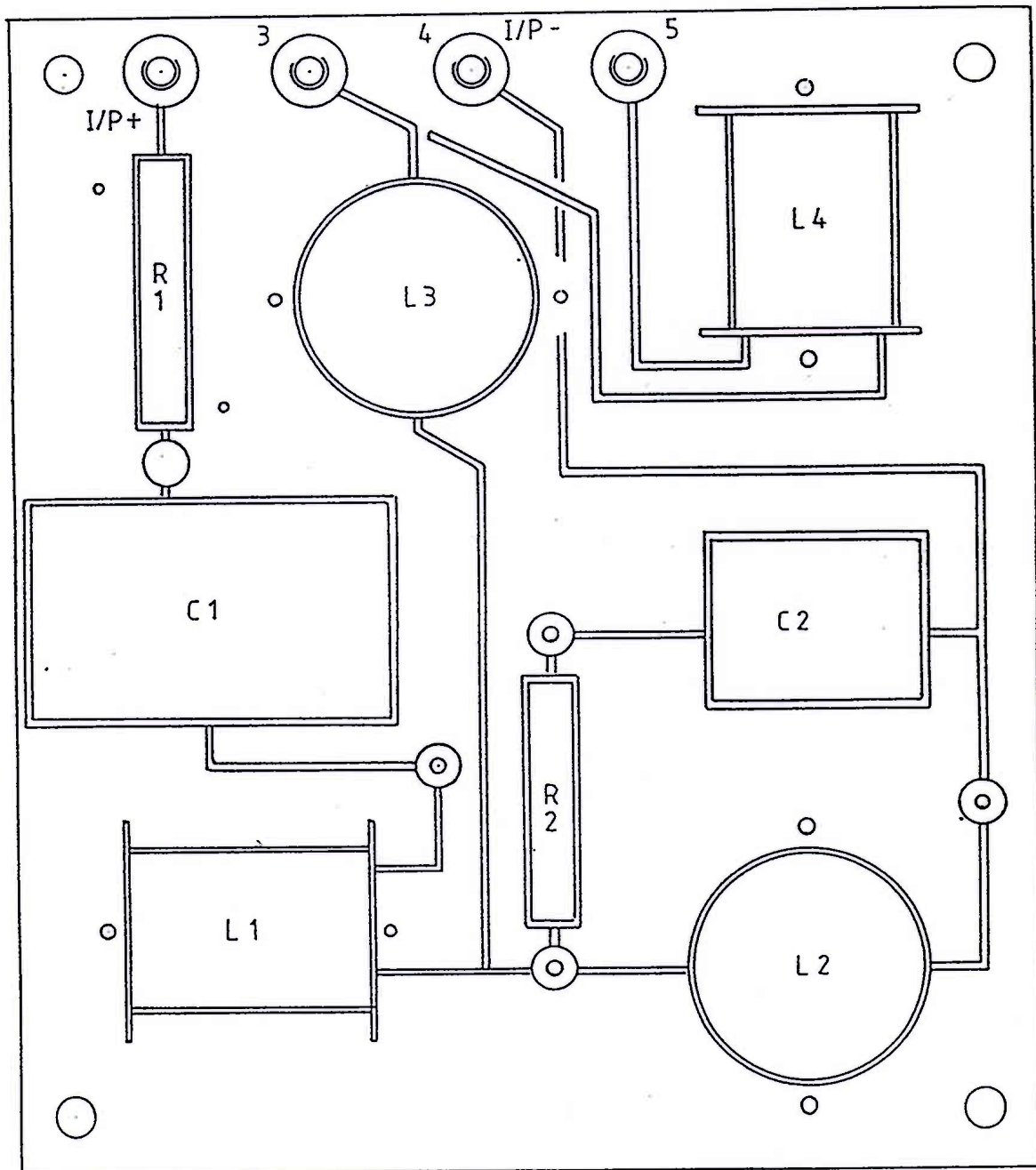


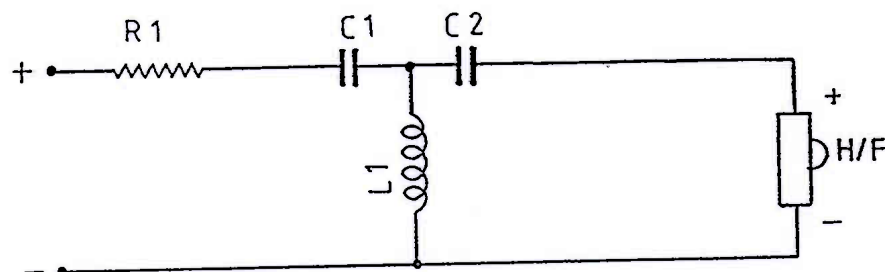
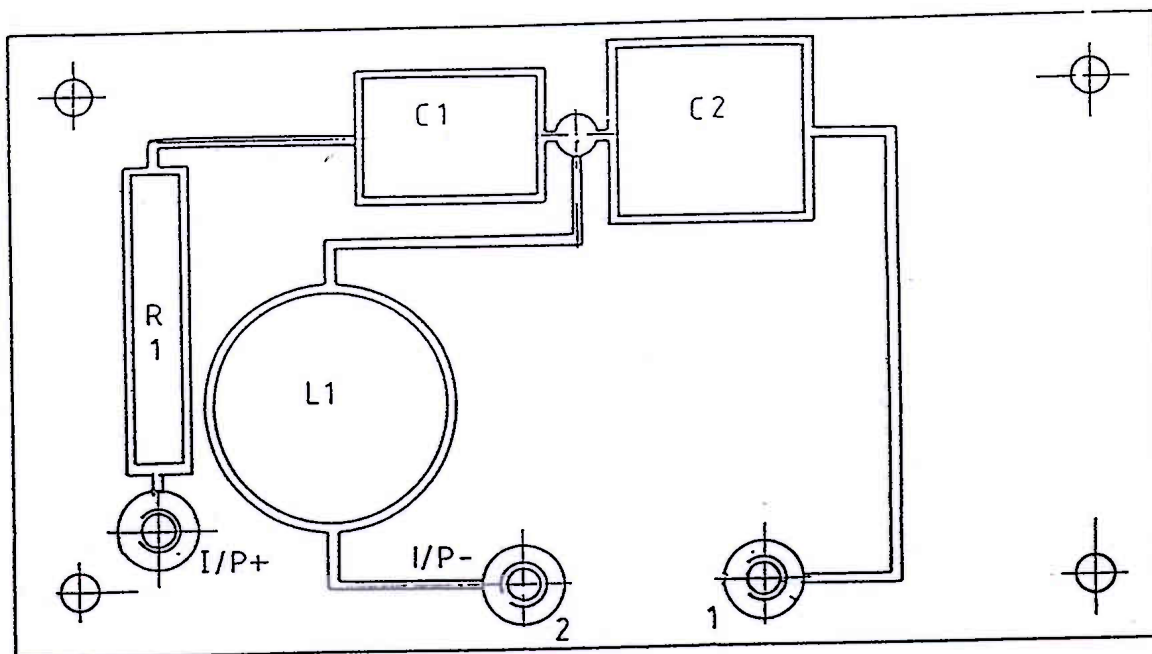


ITEM	CODE	COMPONENT	VALUE	REMARKS
L1	ZL0019	INDUCTOR	0.2mH	0.9 WIRE + CORE
C1		CAPACITOR	6?F	4.7+1.0 C1850+C0051
C2		CAPACITOR	9?F	4.7 X 2 C1850
R1		RESISTOR	2R7	R2062 X 2
	C4561	PCB		DRG. A1709s1
	H1996	SCREW		3 OFF
	H5487	WASHER		3 OFF
	T4006	RING TAG		3 OFF

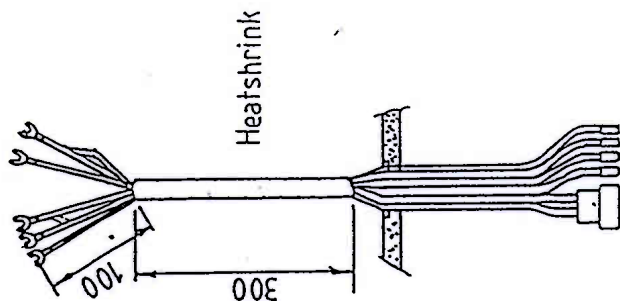
 DO NOT SCALE	DIMENSIONS IN mm TOLERANCES 0. ± 0.5 0.0 ± 0.3 0.00 ± 0.1 ANGLES ± 0.5° UNLESS OTHERWISE STATED	MATERIAL		COPYRIGHT © 1994		PART NO.			
		FINISH		DRAWN KW		DATE 02/11/94			
		5 REDRAWN		CHECKED / APPROVED SYSTEM		ZZ5355			
H/F CROSSOVER (800)		ISS		ECN NO.		DATE		APPROVAL	
		TITLE		AMENDMENT		SCALE		NTS	
				ISS		FULL DRG SIZE		A3	
								A1709-3 -3 ⑤	



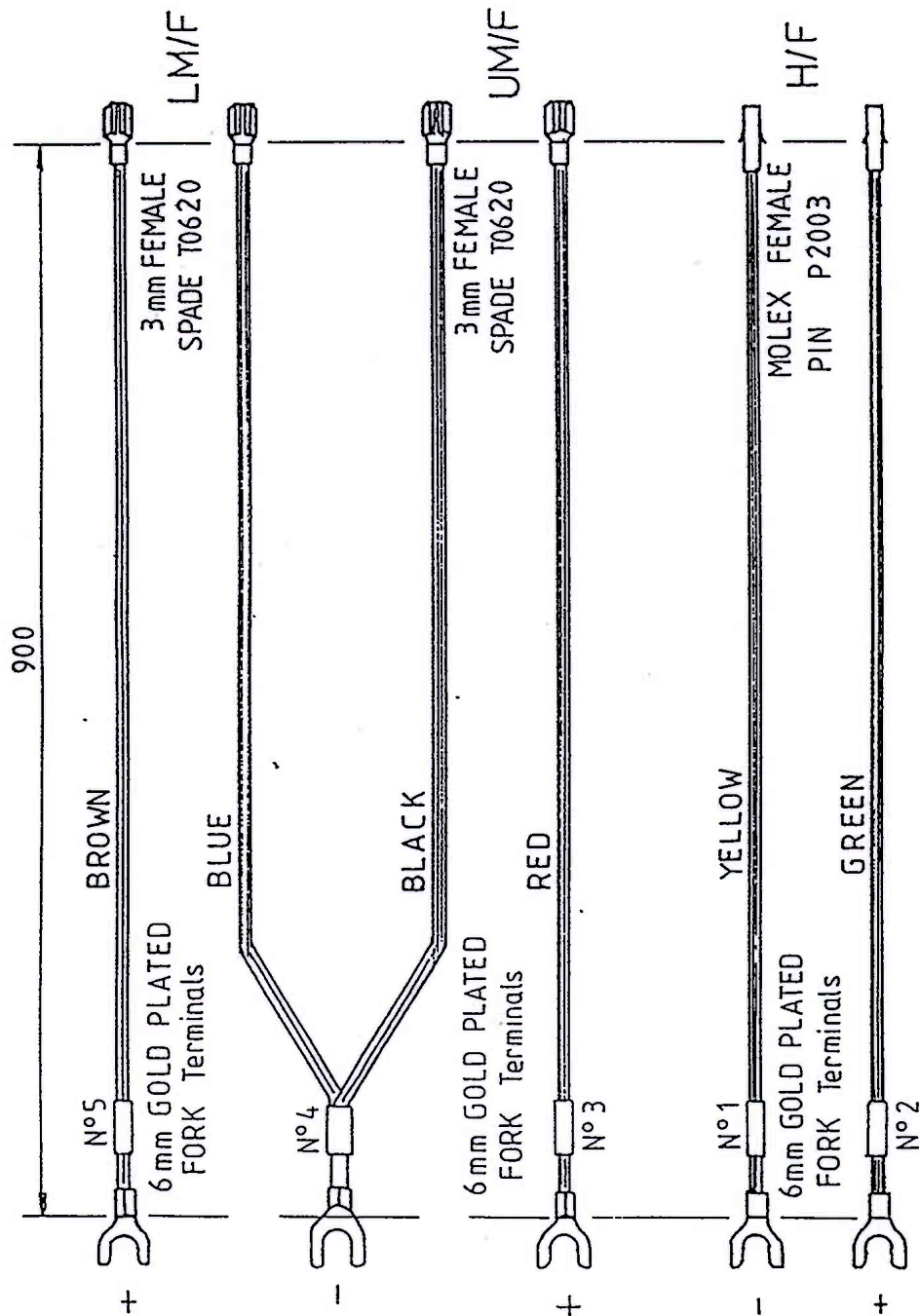




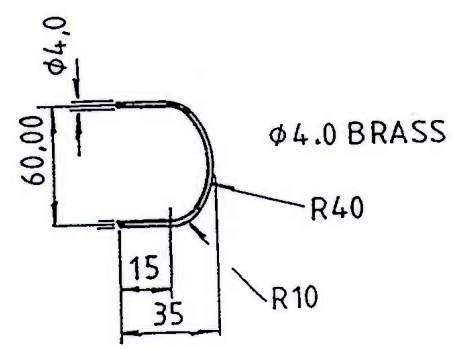
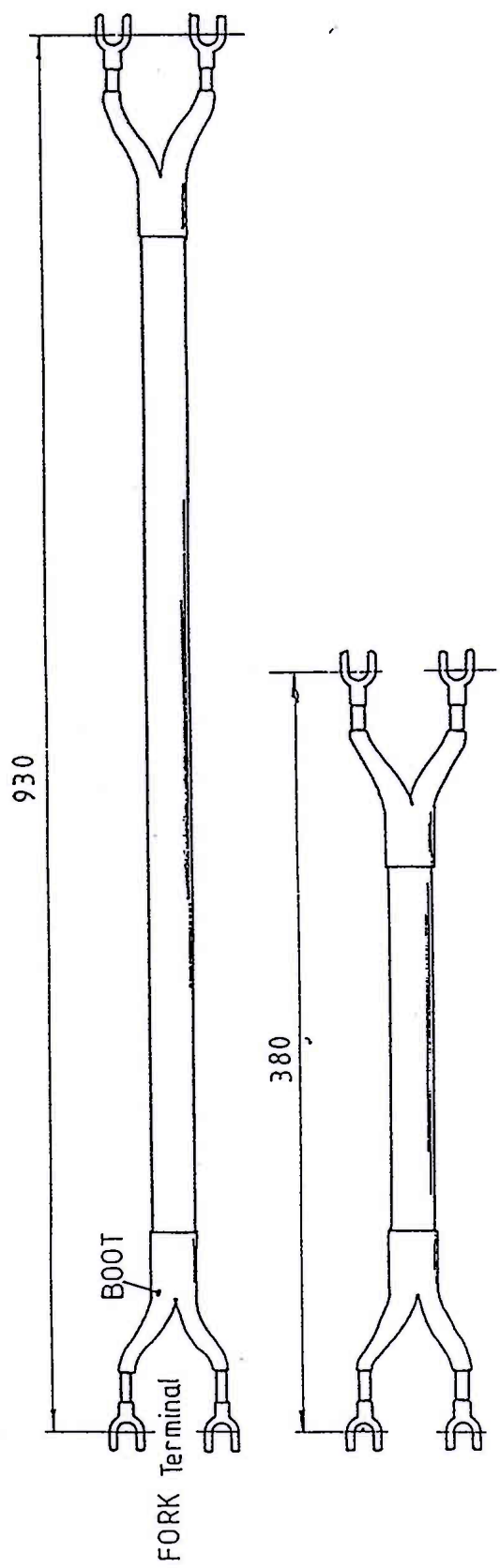
ITEM	CODE N°	COMPONENT	VALUE	REMARKS
L1	ZL 0019	INDUCTOR	0,2mH	0,9 wire + core
C1	C	CAPACITOR	6µF	4.7+1,0 C0388+ C 0051
C2	"	"	9µF	4.7x2 C0388
R1	R	RESISTOR	2R7	R206 2 x 2
	C4561	X-OVER BOARD		Drq A1709
	H1996	Screw		3 OFF
	H5487	Washer		3 OFF
	H5320	Ring tag		3 OFF

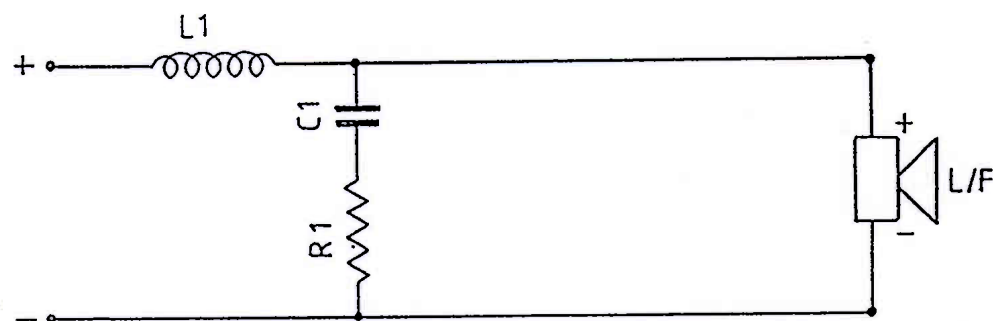
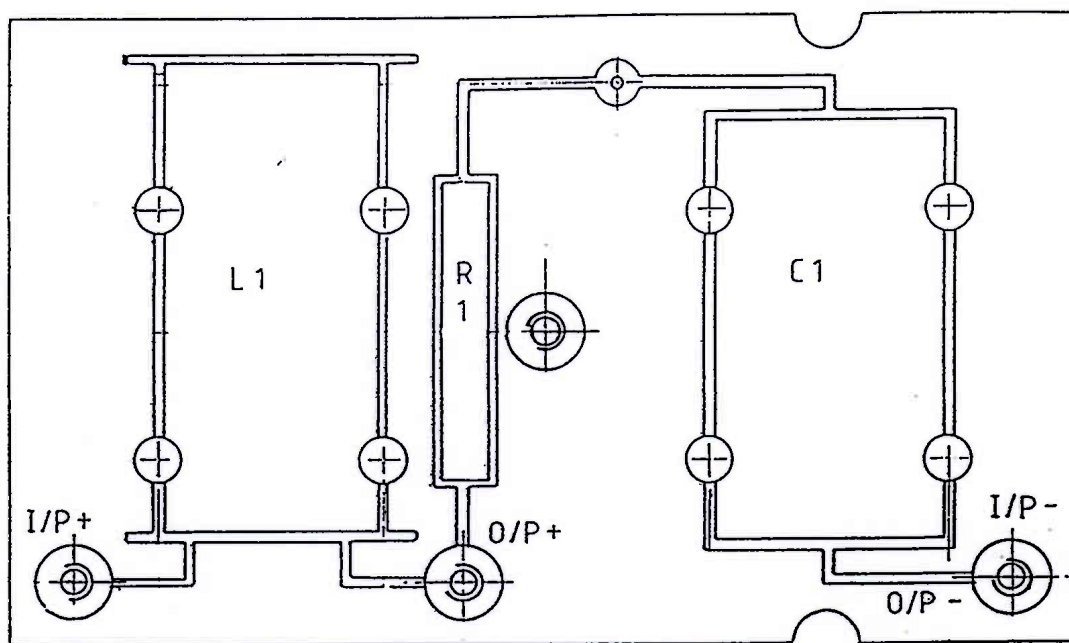


MOLEX HOUSING  
P 2100  
NOTE FIT HOUSING AFTER  
ASS'Y TO CABINET

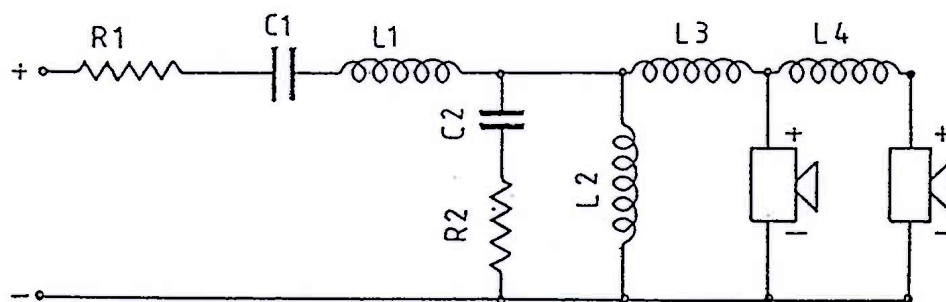




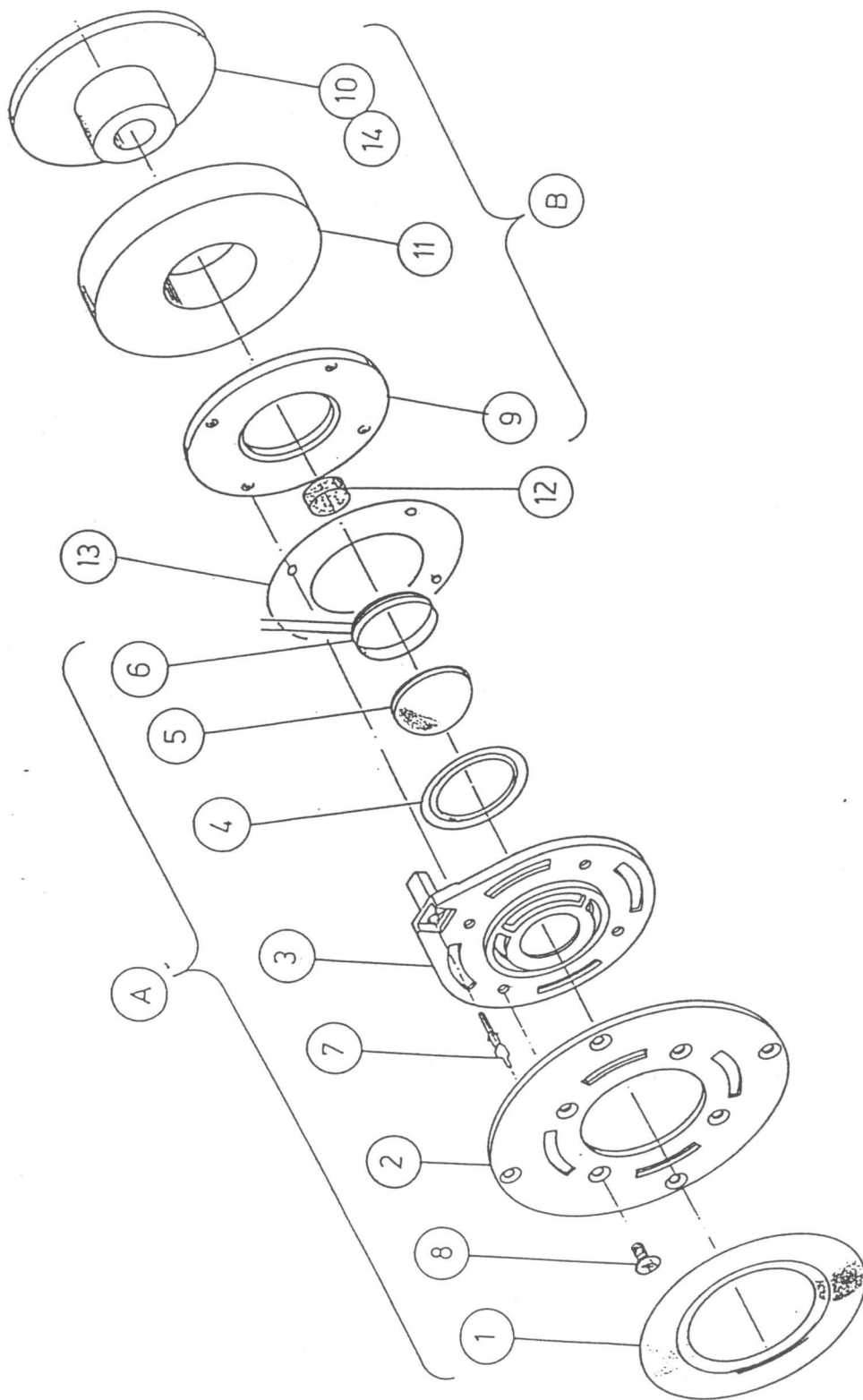




ITEM	CODE N°	COMPONENT	VALUE	REMARKS
L1	ZL1066	INDUCTOR	8.0mH	1,25 wire cored -
C1	C	CAPACITOR	72µF	C0426 + C0132 x1
R1	R	RESISTOR	R 47	R1503 x2
	C4588	X-OVER BOARD		Drg A 1746
	P 2771	Support pin		1 OFF
	C6513	Cable tie		4 OFF
	H1996	Screw		3 OFF
	H5487	Washer		3 OFF
	H5320	Ring tag		3 OFF

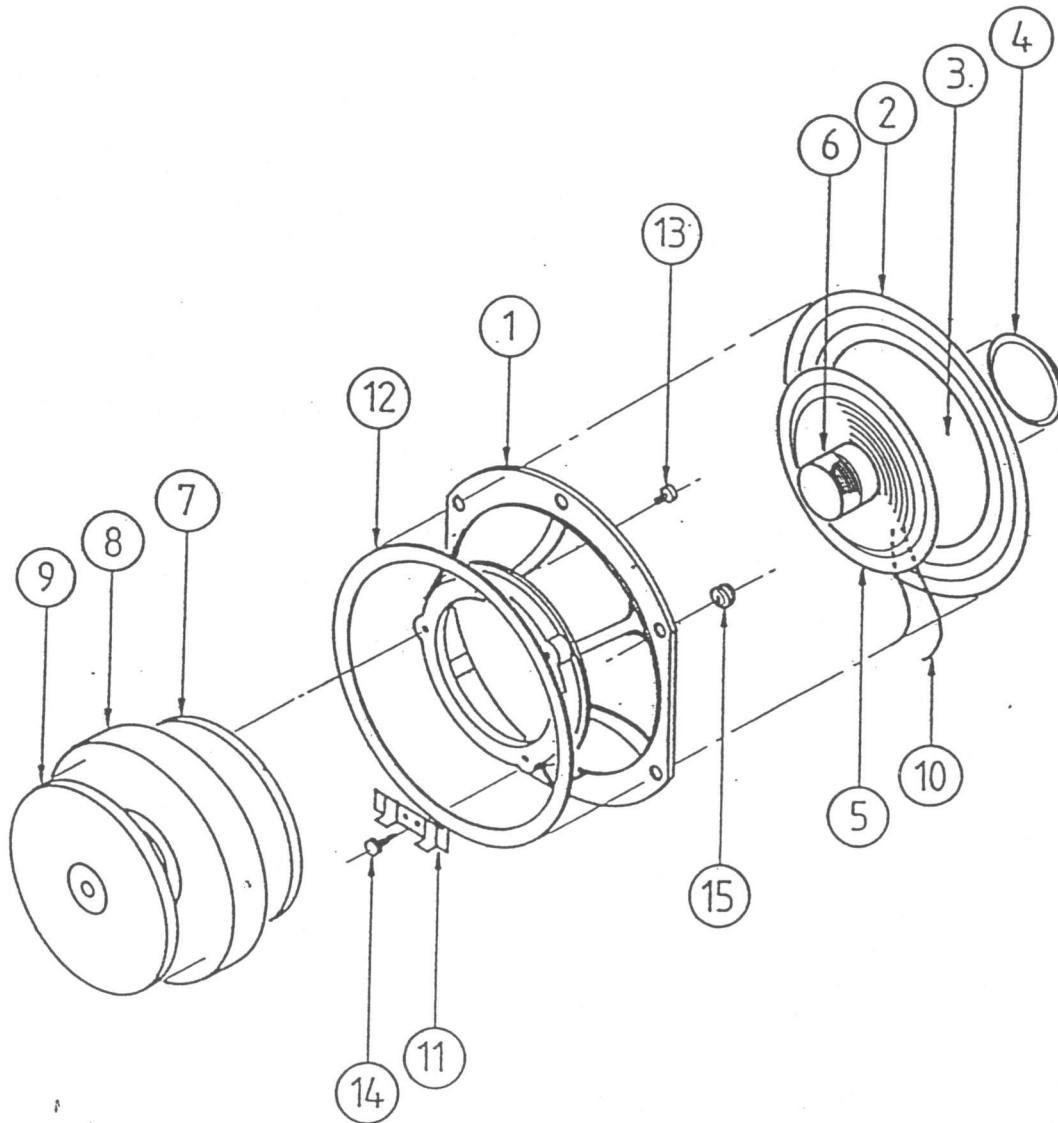


ITEM	CODE N°	COMPONENT	VALUE	REMARKS
L1	ZL1023	INDUCTOR	0,6mH	1,25wire cored
L2	ZL1031	"	0,7mH	"
L3	ZL1040	"	0,16mH	"
L4	ZL1058	"	1.5mH	"
C1	C 0400	CAPACITOR	82µF	c0400
C2	C	"	30µF	C 0418 + C0388 x 2
R1	R	RESISTOR	1R8	R 2836
R2	R1503	"	1R0	R1538 x 2
	C4570	X-OVER BOARD		A1708
	P2771	Support pin		4 OFF
	H 2003	Screw	4 OFF	N° 4 x 1/2" pan hd pozi
	H 1996	Screw	4 OFF	
	H 5487	WASHER	4 OFF	
	H5320	Ring tag	4 OFF	

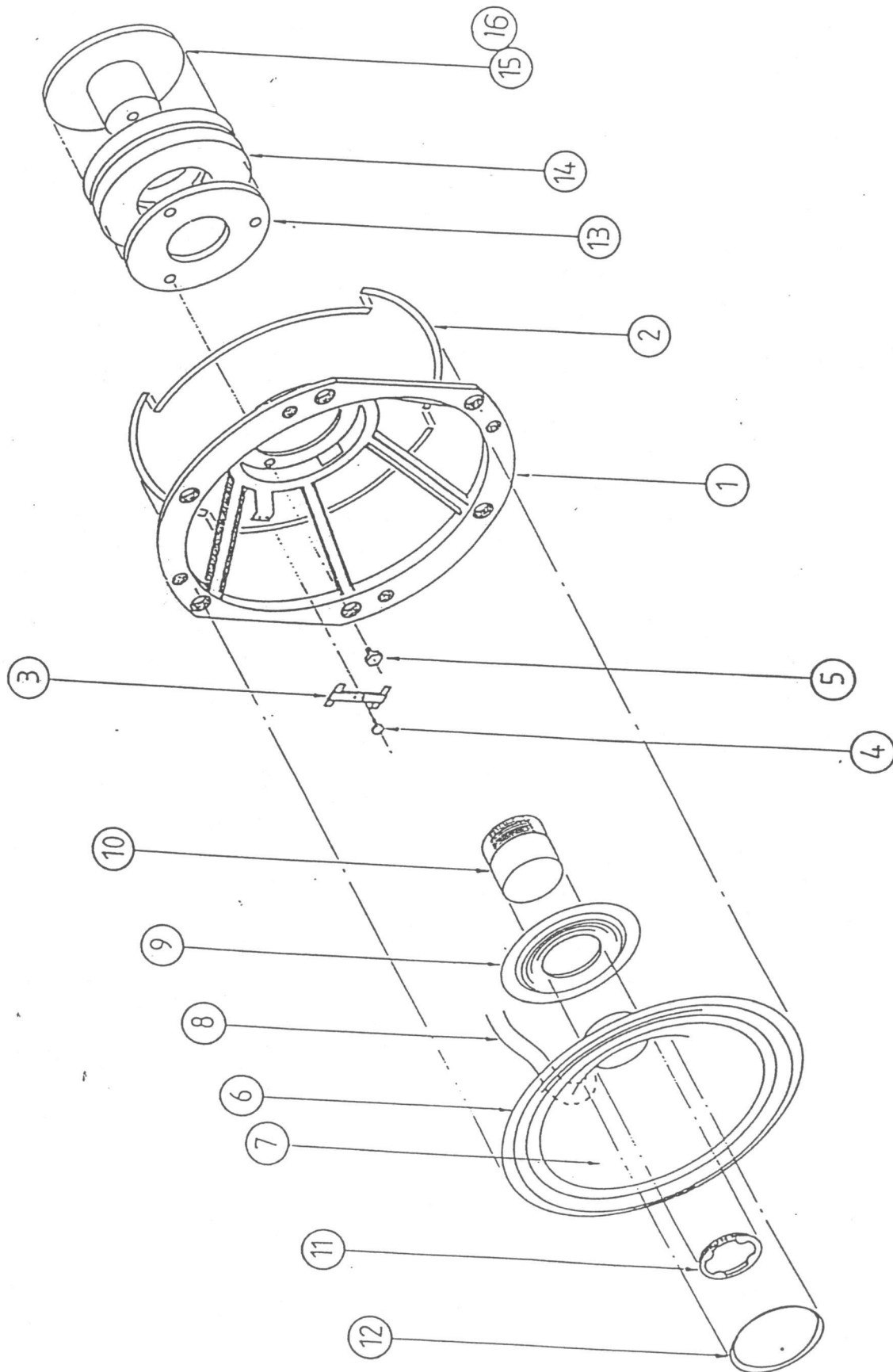


ITEM	QTY	Code N°	DESCRIPTION	DRG.Ref.
-	-	ZZ055	MID-RANGE Chassis Unit - complete assembly	B1360
			CHASSIS ASSEMBLY	
1	1	C 5109	Chassis - sprayed black	C670
11	1	T 0671	Terminal Panel	
12	1	G 0069	Gasket	A668
13	3	H 1287	Screw M4 x 8 csk. hd. pozi	
14	1	H 1058	Screw N°6 x 1/4" pan hd. pozi	
15	4	G 2135	Grommet	
			CONE & COIL ASSEMBLY	
2	1	S 1058	Surround	
3	1	C 763	Cone	
4	1	D 0051	Dust Cap	
5	1	S 0558	Rear Suspension	A928
6	1	C 6709	Coil / Coil Former assembly	
10	2	T 1759	Tinsel - copper 5 strand	
			MAGNET ASSEMBLY	
7	1	P 0035	Front Plate	A659
8	1	M 0019	Magnet Ceramic	
9	1	P 0043	Back Plate / Pole Piece assembly	A660





ITEM	QTY	Code N°	DESCRIPTION	DRGRef.
-	-	ZZ5304/A	Bass Unit - complete assembly	A1737
			CHASSIS ASSEMBLY	
1	1	C 5150	Chassis - sprayed black	C689
2	4	G 0094	Gasket	A705
3	1	T 0892	Terminal Panel	
3a	2		Terminal Tag	
5	3	H 1104	Screw M6 x 8 hex. hd.	
	1	R 4014	Pop. Rivet 3.2 mm	
		ZZ5304/A	CONE & COIL ASSEMBLY	
6	1		Surround	
7	1	ZZ5304/A	Cone	
8	2	T 1767	Tinsel - copper 10 strand	
9	1	S 0523	Rear Suspension	
10	1		Coil Sleeve	A1722
10a	1	ZV0388	Coil Former	
11	1	R 3026	Stiffening Ring	A373
12	1	D 0191	Dust Cap	
			MAGNET ASSEMBLY	
13	1	P .0719	Front Plate	A694
14	2	M 0205	Magnet Ceramic	A1515
15	1	P .0728	Back Plate / Pole Piece assembly	A1345
16	1	L 1619	Label	A1741



14	Label	1	A1742	L1600
13	Gasket	1	A1698	G0477
12	Foam	1	A1697	F0345
11	Magnet ceramic (Neo 034)	1	A1514	M0183
10	Pole piece (Forged)	1	A1622	P0833
9	Front plate	1	A1621	P0825
8	Screw M4x8 csk hd pozi	3		H1287
7	Solder terminal pin (Male)	2	Molex 1376 TL	P2119
6	Coil assembly	1	A1620	ZV0370
5	Metal dome	1	A1619	D1058
4	Surround	1	A1618	S1260
3	Diaphragm Mt'g plate	1	B1617	D0876
2	Chassis plate	1	A1616	C5673
1	Tweeter trim ring	1	A1615	R4170
B	Magnet assembly	1		
A	Diaphragm mounting plate ass'y	1		ZC5312