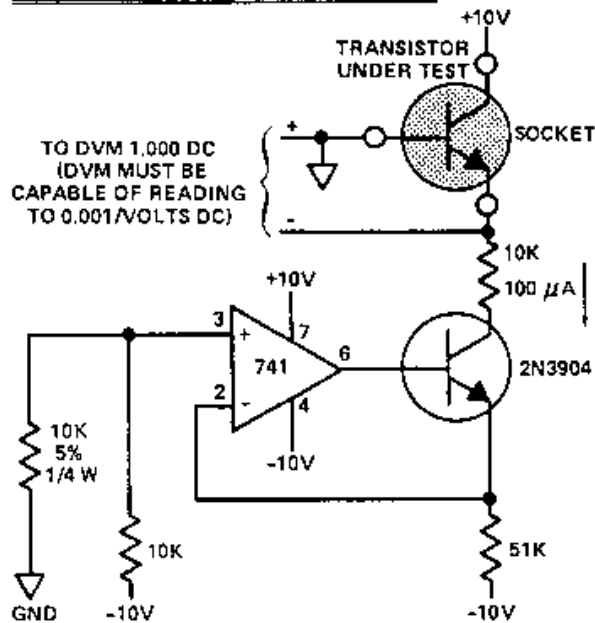
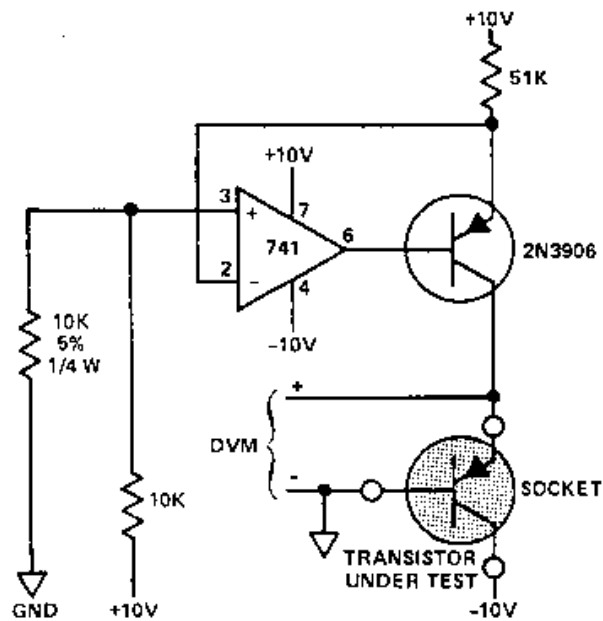


# MATCHING TRANSISTOR CIRCUITS

## NPN TRANSISTORS 2N3904, 2N3392 (ETC.)



## PNP TRANSISTORS 2N3906, (ETC.)



## MATCHING PROCEDURE

1. SETUP  $\pm 10V$  SUPPLIES TO  $\pm 10.00 V$  OR  $\pm 15.00 V$ .
2. TAKE TRANSISTORS (APPROXIMATELY 20) AND PLACE THEM IN STYROFOAM TO STABILIZE AT ROOM TEMPERATURE.
3. PLACE TRANSISTORS INTO SOCKET, ONE AT A TIME, AND MEASURE BASE TO EMITTER VOLTAGE. DO NOT USE YOUR FINGERS. USE GLOVES OR PLIERS WITH INSULATING JAWS. YOUR FINGER HEAT WILL CAUSE THE READINGS TO VARY.
4. MARK DOWN THE  $V_{be}$  FROM THE DVM AND FIND TWO TRANSISTORS THAT THE  $V_{be}$  MATCHES TO  $\pm 2 MV$ .
5. EXAMPLE:

TRANSISTOR 1 =	0.600
TRANSISTOR 2 =	0.598
	0.002