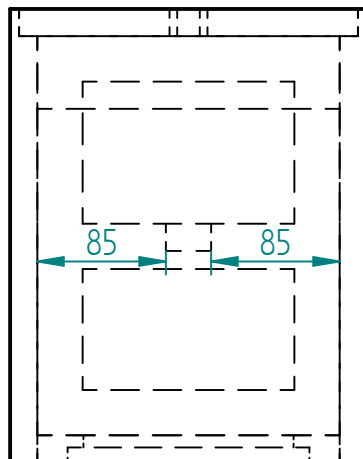
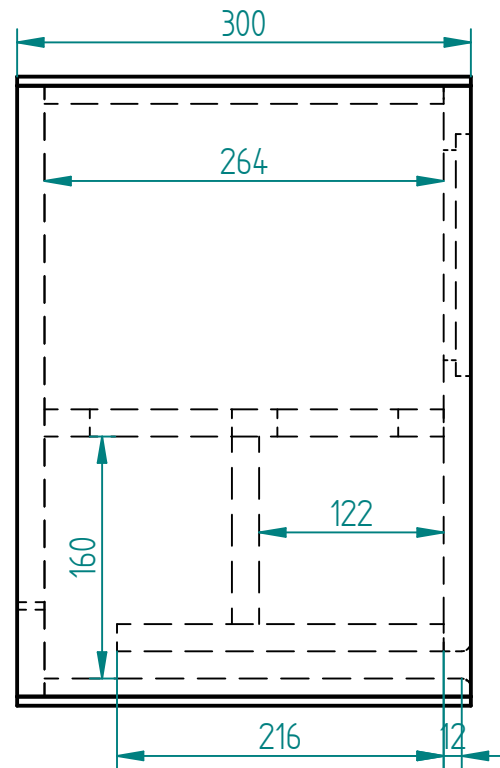
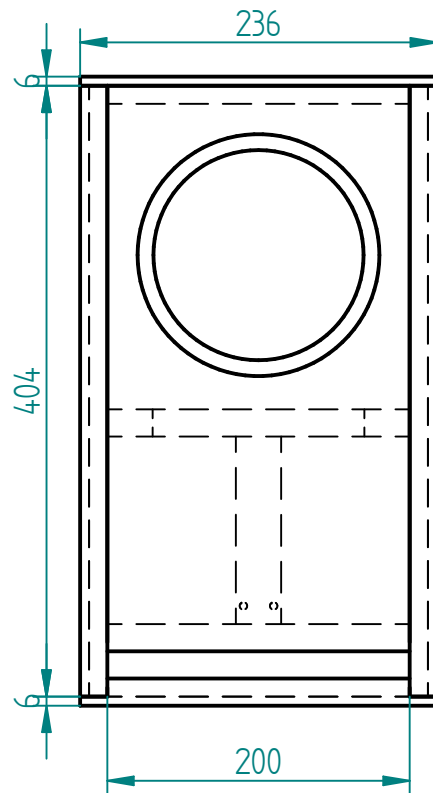
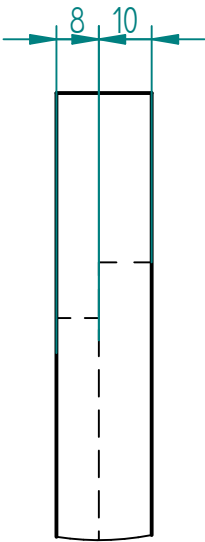
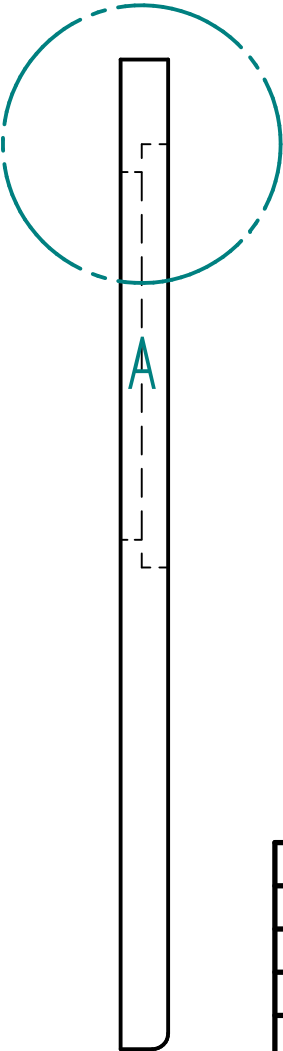
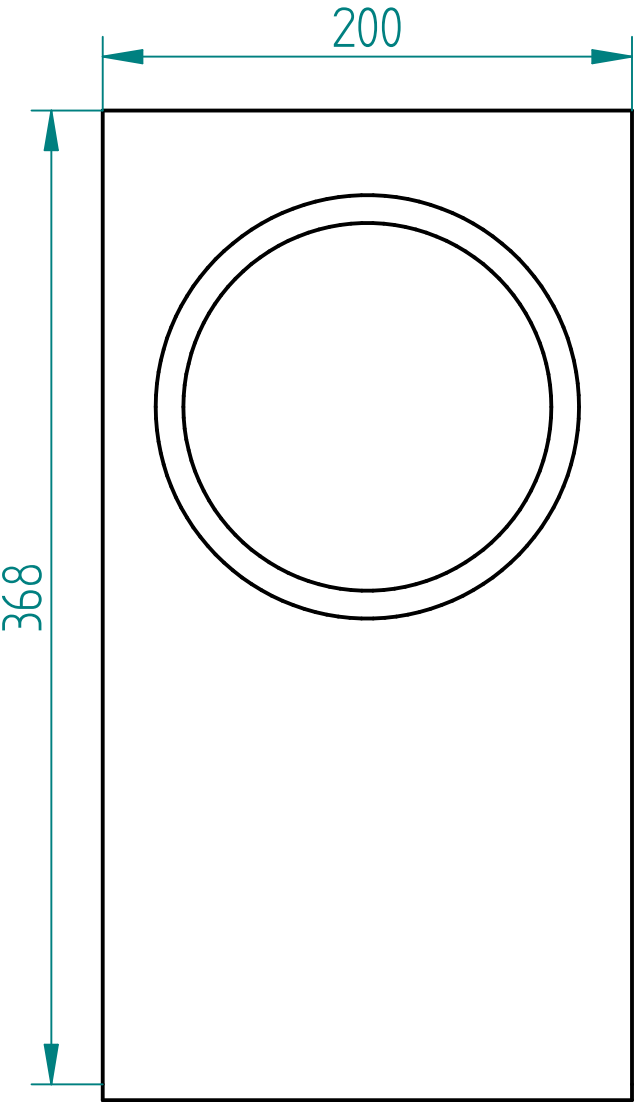


	NAME	DATE	Westvloamsche DIY nerds		
DRAWN BY	Anna	02/07/20			
DESIGNED BY	Ruben	/	TITLE Mark Audio Alpair 10M Slot ported box		
UNLESS OTHERWISE SPECIFIED DIMENSIONS ARE IN MILLIMETERS ANGLES $\pm X.X^\circ$ 2 PL $\pm X.XX$ 3 PL $\pm X.XXX$			SIZE A4	DWG NO 2	REV 2
			FILE NAME: Official Drawings.dft		
			SCALE:	WEIGHT:	SHEET 1 OF 14

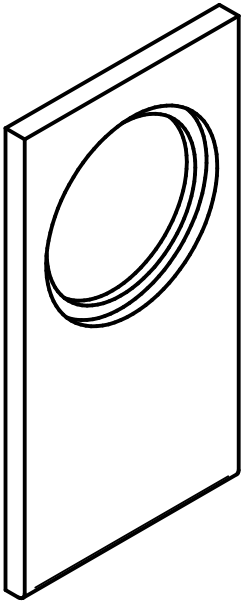


	NAME	DATE	Westvloamsche DIY nerds		
DRAWN BY	Anna	02/07/20	TITLE Mark Audio Alpair 10M Slot ported box		
DESIGNED BY	Ruben	/			
UNLESS OTHERWISE SPECIFIED DIMENSIONS ARE IN MILLIMETERS ANGLES ±X.X° 2 PL ±X.XX 3 PL ±X.XXX			SIZE A4	DWG NO 2	REV 2
			FILE NAME: Official Drawings.dft		
			SCALE:	WEIGHT:	SHEET 2 OF 14

Front panel

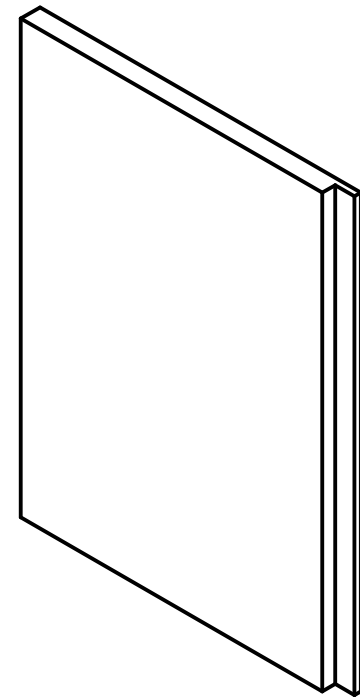
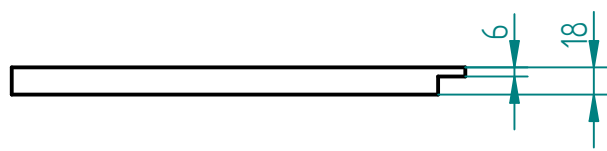
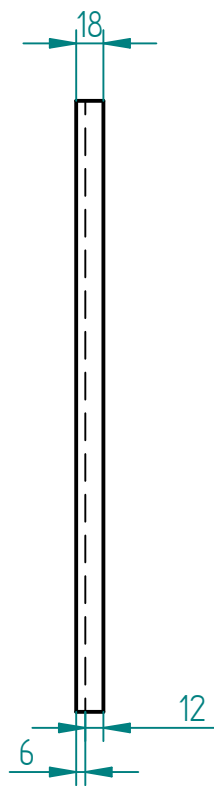
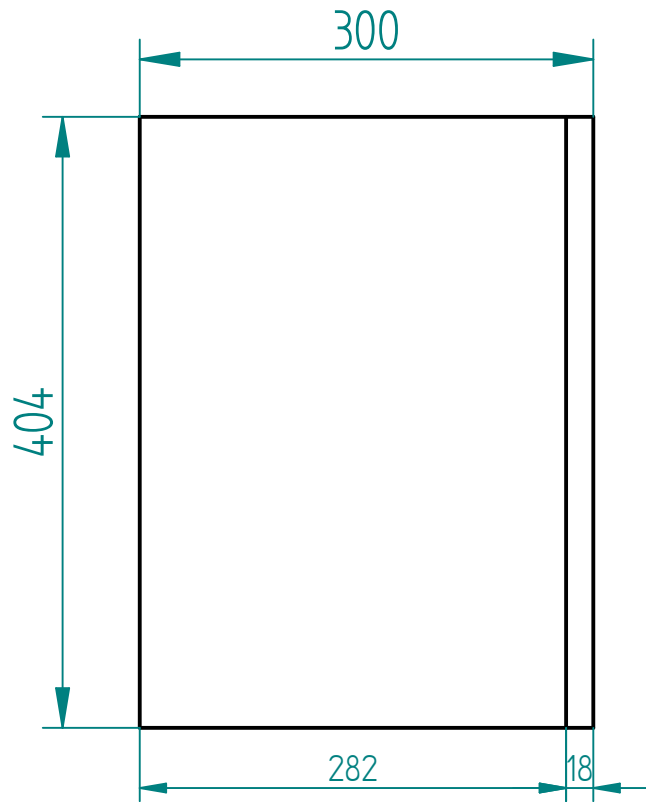


DETAIL A



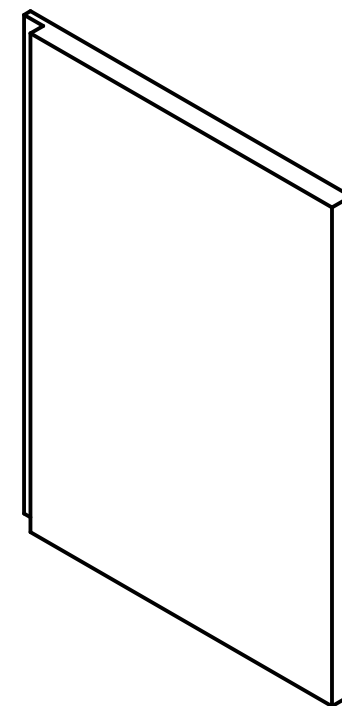
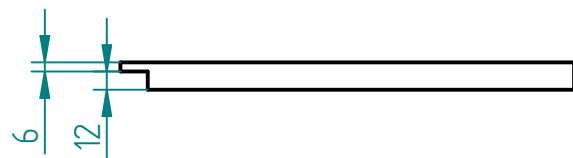
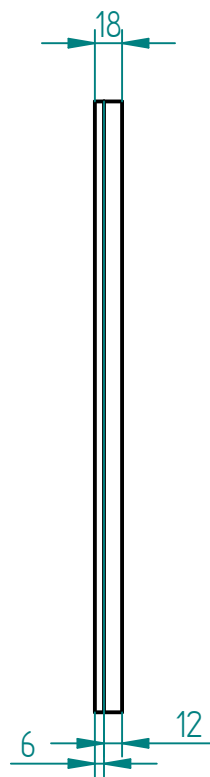
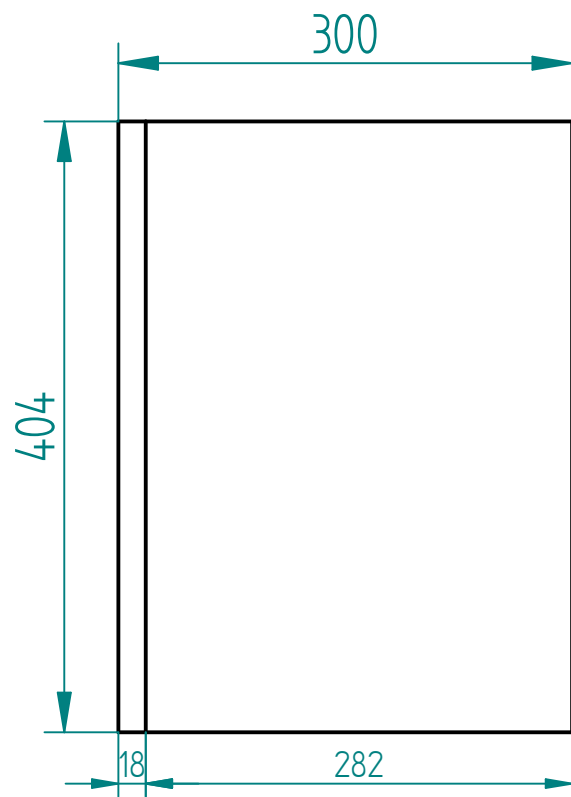
	NAME	DATE	Westvloamsche DIY nerds		
DRAWN BY	Anna	02/07/20			
DESIGNED BY	Ruben	/	TITLE Mark Audio Alpair 10M Slot ported box		
UNLESS OTHERWISE SPECIFIED DIMENSIONS ARE IN MILLIMETERS ANGLES ±X.X° 2 PL ±X.XX 3 PL ±X.XXX			SIZE A4	DWG NO 2	REV 2
			FILE NAME: Official Drawings.dft		
			SCALE:	WEIGHT:	SHEET 3 OF 14

Left panel



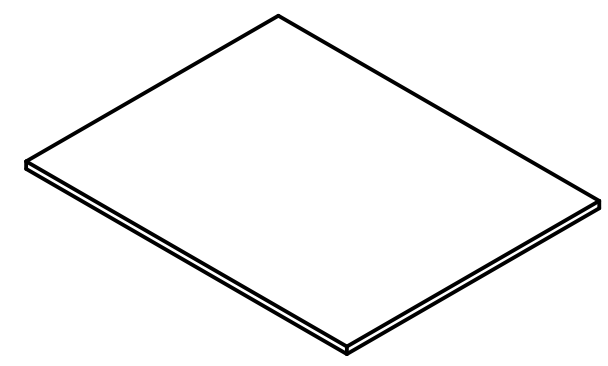
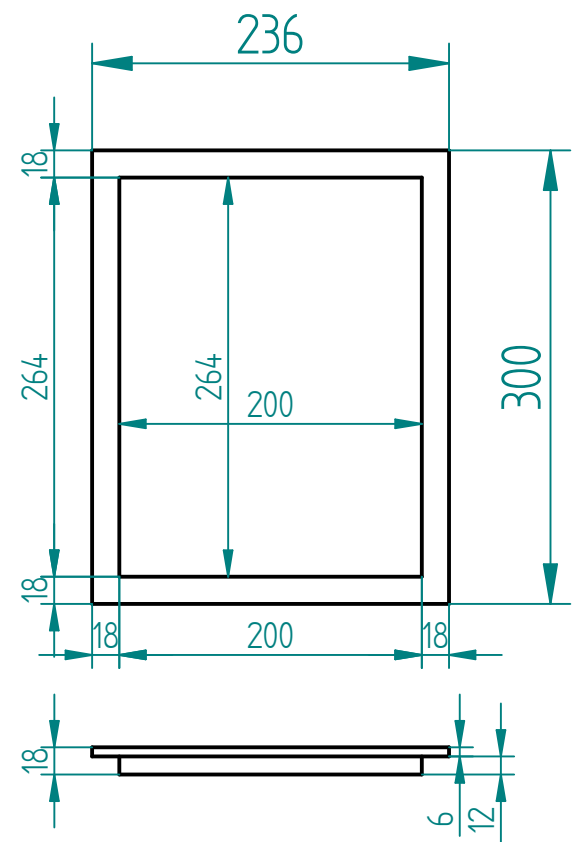
	NAME	DATE	Westvloamsche DIY nerds		
DRAWN BY	Anna	02/07/20			
DESIGNED BY	Ruben	/	TITLE Mark Audio Alpair 10M Slot ported box		
UNLESS OTHERWISE SPECIFIED DIMENSIONS ARE IN MILLIMETERS ANGLES ±X.X° 2 PL ±X.XX 3 PL ±X.XXX			SIZE A4	DWG NO 2	REV 2
			FILE NAME: Official Drawings.dft		
			SCALE:	WEIGHT:	SHEET 4 OF 14

Right panel



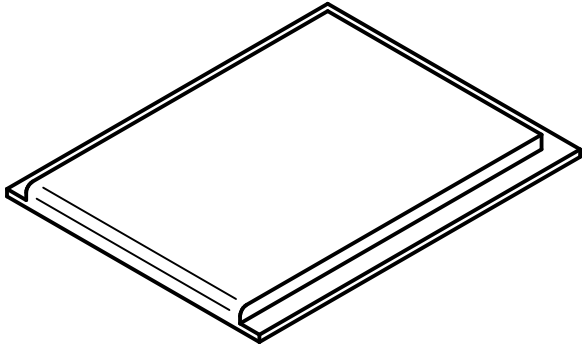
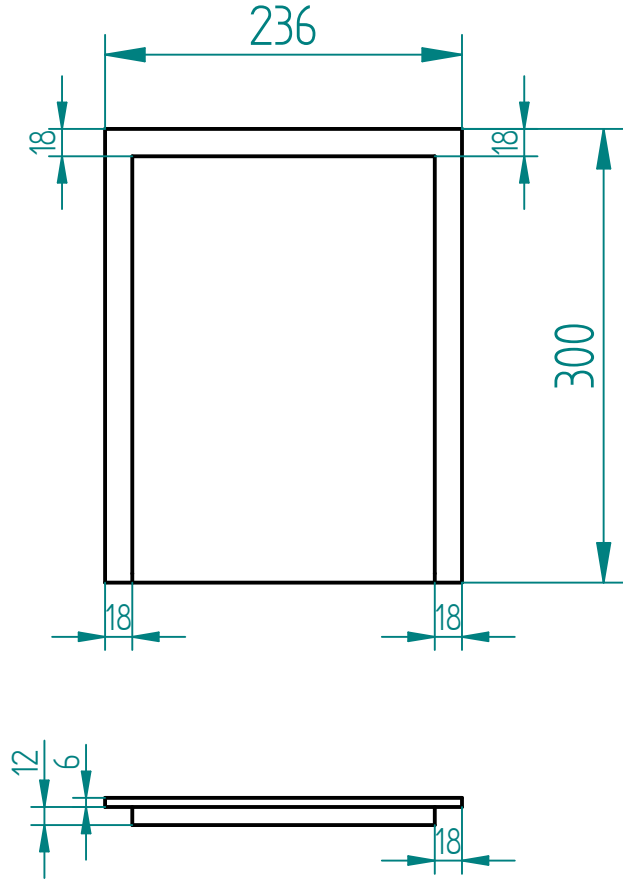
	NAME	DATE	Westvloamsche DIY nerds		
DRAWN BY	Anna	02/07/20	TITLE Mark Audio Alpair 10M Slot ported box		
DESIGNED BY	Ruben	/			
UNLESS OTHERWISE SPECIFIED DIMENSIONS ARE IN MILLIMETERS ANGLES ±X.X° 2 PL ±X.XX 3 PL ±X.XXX			SIZE A4	DWG NO 2	REV 2
			FILE NAME: Official Drawings.dft		
			SCALE:	WEIGHT:	SHEET 5 OF 14

Top panel



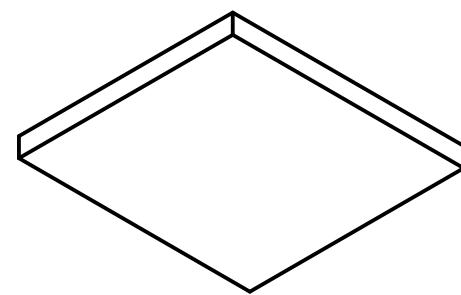
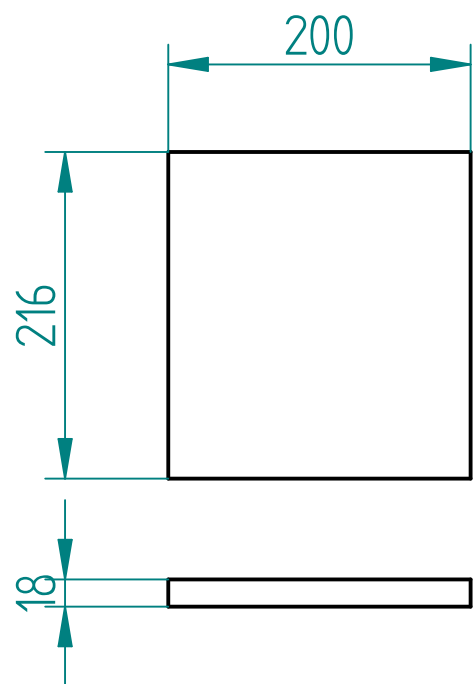
	NAME	DATE	Westvloamsche DIY nerds		
DRAWN BY	Anna	02/07/20			
DESIGNED BY	Ruben	/	TITLE Mark Audio Alpair 10M Slot ported box		
UNLESS OTHERWISE SPECIFIED DIMENSIONS ARE IN MILLIMETERS ANGLES ±X.X° 2 PL ±X.XX 3 PL ±X.XXX			SIZE A4	DWG NO 2	REV 2
			FILE NAME: Official Drawings.dft		
			SCALE:	WEIGHT:	SHEET 6 OF 14

Bottom panel



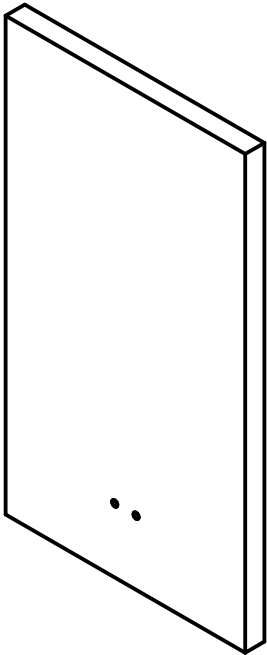
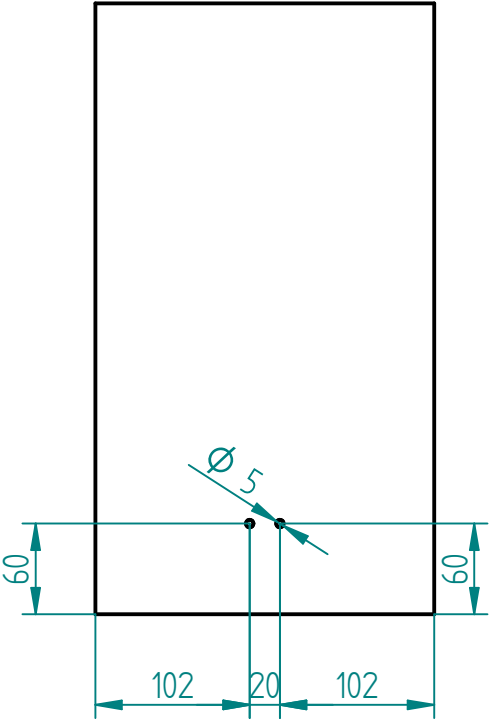
	NAME	DATE	Westvloamsche DIY nerds		
DRAWN BY	Anna	02/07/20	TITLE Mark Audio Alpair 10M Slot ported box		
DESIGNED BY	Ruben	/			
UNLESS OTHERWISE SPECIFIED DIMENSIONS ARE IN MILLIMETERS ANGLES ±X.X° 2 PL ±X.XX 3 PL ±X.XXX			SIZE A4	DWG NO 2	REV 2
			FILE NAME: Official Drawings.dft		
			SCALE:	WEIGHT:	SHEET 7 OF 14

Port piece



	NAME	DATE	Westvloamsche DIY nerds		
DRAWN BY	Anna	02/07/20			
DESIGNED BY	Ruben	/	TITLE Mark Audio Alpair 10M Slot ported box		
UNLESS OTHERWISE SPECIFIED DIMENSIONS ARE IN MILLIMETERS ANGLES ±X.X° 2 PL ±X.XX 3 PL ±X.XXX			SIZE A4	DWG NO 2	REV 2
			FILE NAME: Official Drawings.dft		
			SCALE:	WEIGHT:	SHEET 8 OF 14

Back panel



	NAME	DATE	Westvloamsche DIY nerds		
DRAWN BY	Anna	02/07/20			
DESIGNED BY	Ruben	/	TITLE Mark Audio Alpair 10M Slot ported box		
UNLESS OTHERWISE SPECIFIED DIMENSIONS ARE IN MILLIMETERS ANGLES $\pm X.X^\circ$ 2 PL $\pm X.XX$ 3 PL $\pm X.XXX$			SIZE A4	DWG NO 2	REV 2
			FILE NAME: Official Drawings.dft		
			SCALE:	WEIGHT:	SHEET 9 OF 14

Brace pieces

Figure 8 Brace

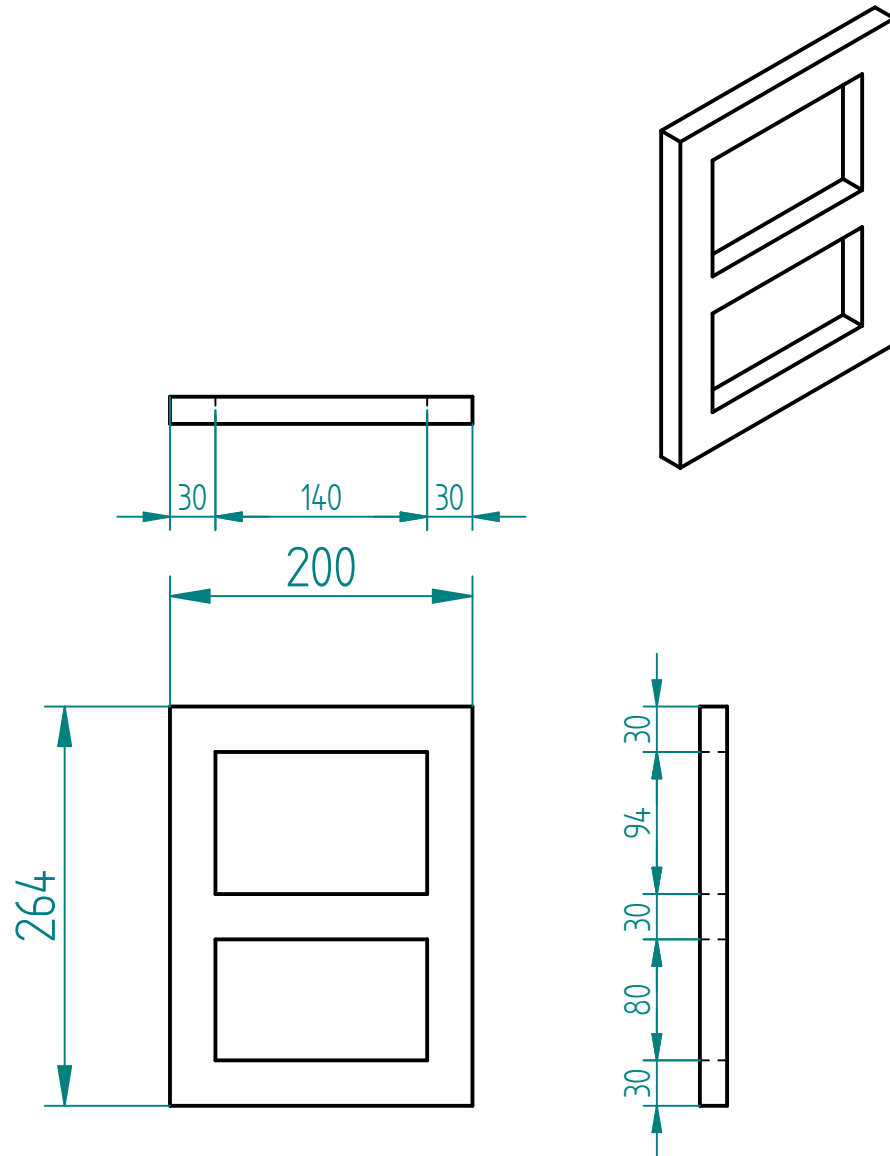
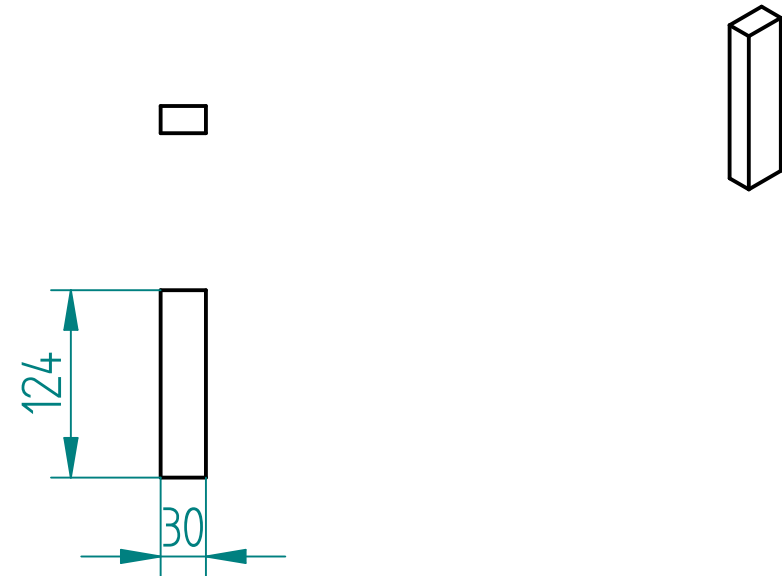
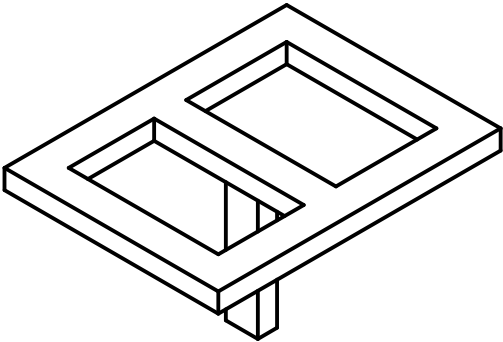
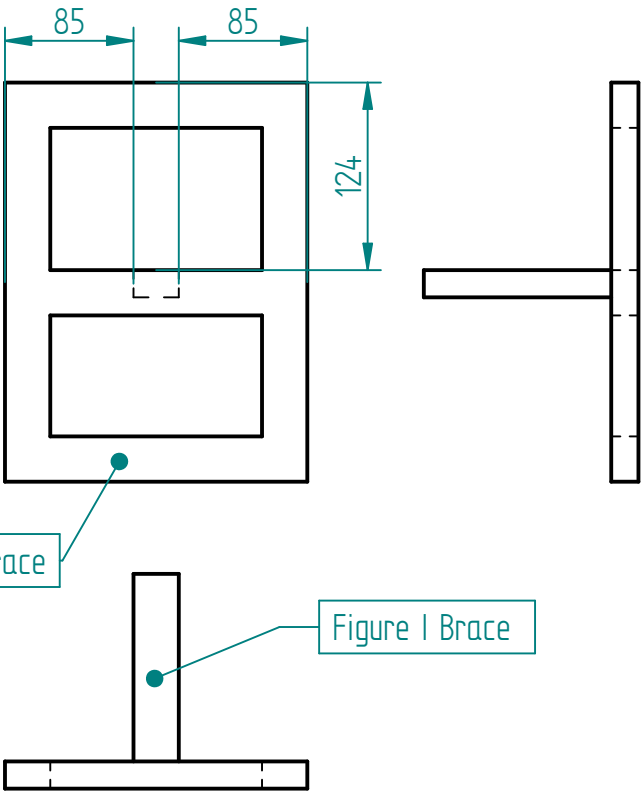


Figure 1 brace



	NAME	DATE	Westvloamsche DIY nerds		
DRAWN BY	Anna	02/07/20	TITLE Mark Audio Alpair 10M Slot ported box		
DESIGNED BY	Ruben	/			
			SIZE A4	DWG NO 2	REV 2
UNLESS OTHERWISE SPECIFIED DIMENSIONS ARE IN MILLIMETERS ANGLES $\pm X.X^\circ$ 2 PL $\pm X.XX$ 3 PL $\pm X.XXX$			FILE NAME: Official Drawings.dft		
			SCALE:	WEIGHT:	SHEET 10 OF 14

Inner brace assembly



	NAME	DATE	Westvloamsche DIY nerds		
DRAWN BY	Anna	02/07/20	TITLE Mark Audio Alpair 10M Slot ported box		
DESIGNED BY	Ruben	/			
			SIZE A4	DWG NO 2	REV 2
UNLESS OTHERWISE SPECIFIED DIMENSIONS ARE IN MILLIMETERS ANGLES ±X.X° 2 PL ±X.XX 3 PL ±X.XXX			FILE NAME: Official Drawings.dft		
			SCALE:	WEIGHT:	SHEET 11 OF 14

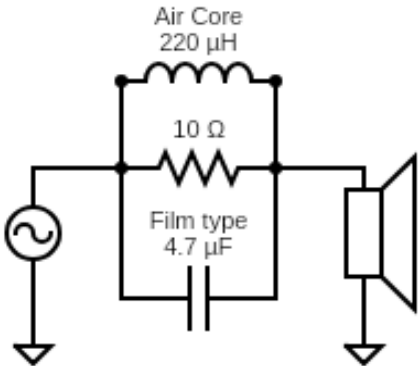
Crossover Diagram

Crossover Components (one speaker)	
Film capacitor	4.7 μ F
Air core coil	220 μ H
Ceramic resistor	10 ohm

The crossover runs in series with the speaker, functioning as a notch filter. Connect the crossover in series with one of the speaker's leads, and keep it identical on both speakers.

Recommended parts are Jantzen Audio for the Air core coil, Jantzen Audio CrossCap for the film capacitor and a good generic brand for hte resistor

The speaker used in this build is a Mark Audio Alpair 10M



	NAME	DATE	Westvloamsche DIY nerds		
DRAWN BY	Anna	02/07/20	TITLE Mark Audio Alpair 10M Slot ported box		
DESIGNED BY	Ruben	/			
UNLESS OTHERWISE SPECIFIED DIMENSIONS ARE IN MILLIMETERS ANGLES \pm X.X° 2 PL \pm X.XX 3 PL \pm X.XXX			SIZE A4	DWG NO 2	REV 2
			FILE NAME: Official Drawings.dft		
			SCALE:	WEIGHT:	SHEET 12 OF 14

Table of requirements

Please take note that this design uses rabbeted edges. When making this build, you will need a router to cut these routed edges.

The panel sizes are the size you need with the the rabbet already on it. After cutting the panels, the router work is subtractive from this.

If you would rather work with straight butt joints, we have a butt jointed version like this file coming up soon.

Tools needed for this build

Chisels & Sandpaper	Wood glue
Big clamps	Some extra speaker wire
Table saw	Router table

Required components for crossover (one speaker)

Air core coil	220 μ H
Ceramic resistor	10 ohm
Film capacitor	4.7 μ F

Required panels for one speaker

Panel	Size	Amount
Front	374 * 200	1
Back	404 * 224	1
Port piece	216 * 200	1
Side panel	404 * 300	2
Bottom	300 * 236	1
Top	300 * 236	1
Fig 8 brace	264 * 200	1
Fig 1 brace	124 * 30	1

	NAME	DATE	Westvloamsche DIY nerds		
DRAWN BY	Anna	02/07/20			
DESIGNED BY	Ruben	/	TITLE Mark Audio Alpair 10M Slot ported box		
			SIZE A4		
UNLESS OTHERWISE SPECIFIED DIMENSIONS ARE IN MILLIMETERS ANGLES ±X.X° 2 PL ±X.XX 3 PL ±X.XXX					
			DWG NO 2		REV 2
			FILE NAME: Official Drawings.dft		
			SCALE:	WEIGHT:	SHEET 13 OF 14

