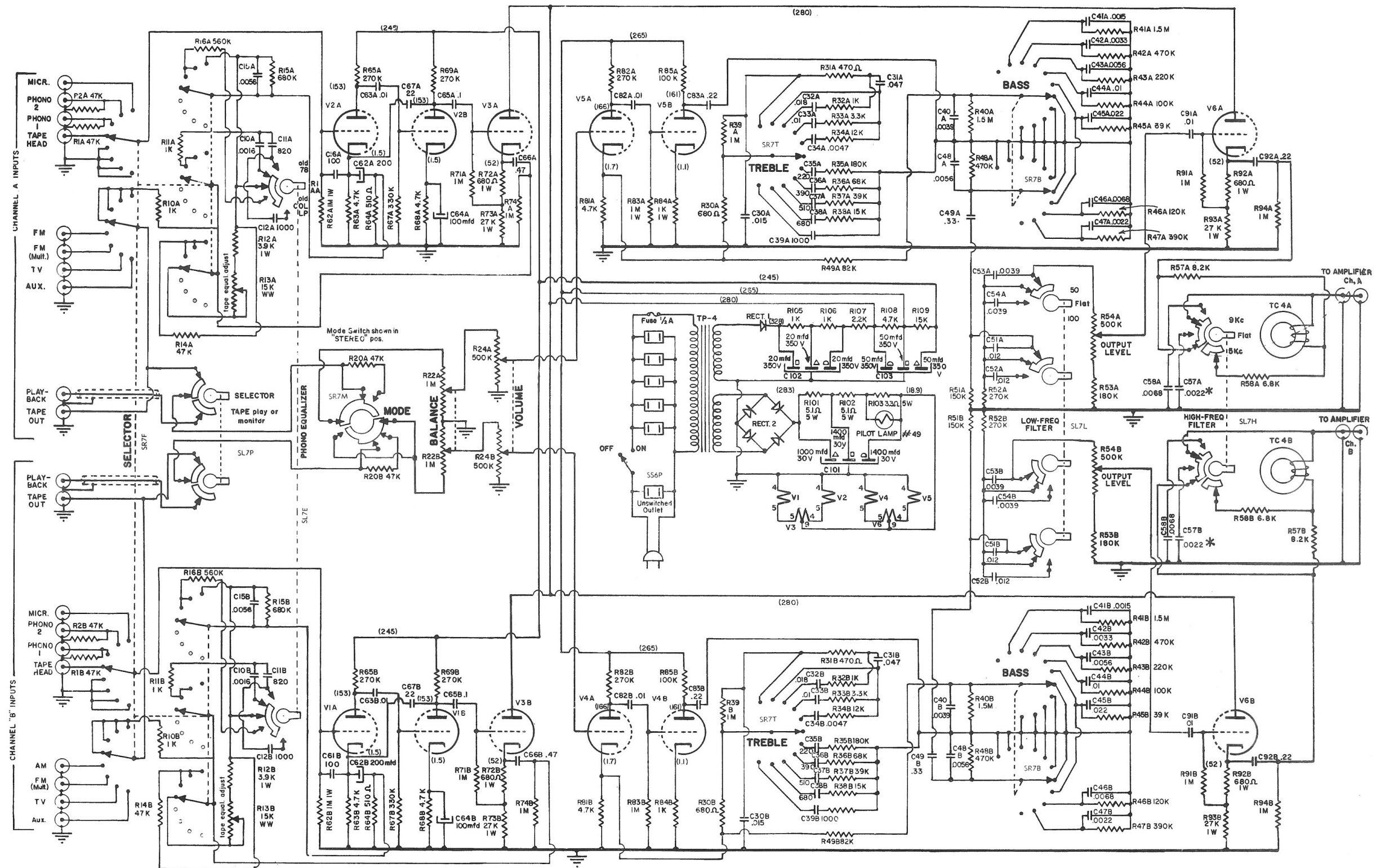


Marantz 7C



(D. C. volts) are approximate as measured with a V.T.V.M. after 30 min. warm up.

* Where shielded lead to main amplifier exceeds 15-20 feet (about 500 mmf.), additional capacitance will lower the Filter cut-off frequencies. This can be compensated for by reducing the value of this capacitor by the amount of the lead capacitance.

Unless otherwise specified:

Condensers in decimals are in MFD
Condensers in whole Nos. are in MMFD

K = x 1000
M = x 1,000,000 (or Megohms)