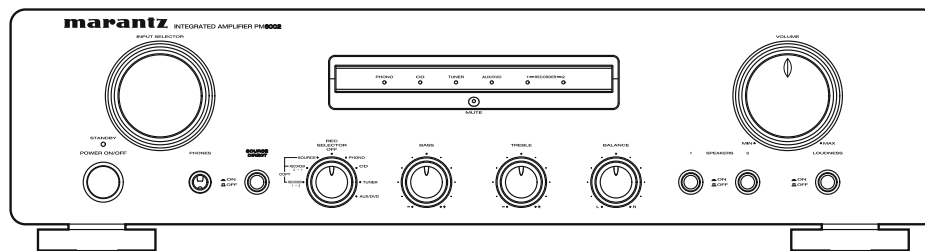


Service Manual

PM6002 /N1B/N1S

Integrated Amplifier



PM6002

TABLE OF CONTENTS

SECTION	PAGE
1. TECHNICAL SPECIFICATIONS	1
2. DC OFFSET VOLTAGE ADJUSTMENT	2
3. IDLING CURRENT ADJUSTMENT	2
4. BLOCK DIAGRAM	3
5. WIRING DIAGRAM	5
6. SCHEMATIC DIAGRAM	7
7. PARTS LOCATION	11
8. EXPLODED VIEW AND PARTS LIST	17
9. MICROPROCESSOR AND IC DATA	20
10. ELECTRICAL PARTS LIST	21
11. ABOUT REPLACE THE MICROPROCESSOR WITH A NEW ONE	37

Please use this service manual with referring to the user guide (D.F.U.) without fail.
修理の際は、必ず取扱説明書を準備し操作方法を確認の上作業を行ってください。

marantz®

PM6002

MARANTZ DESIGN AND SERVICE

Using superior design and selected high grade components, **MARANTZ** company has created the ultimate in stereo sound. Only original **MARANTZ** parts can insure that your **MARANTZ** product will continue to perform to the specifications for which it is famous.

Parts for your **MARANTZ** equipment are generally available to our National Marantz Subsidiary or Agent.

ORDERING PARTS :

Parts can be ordered either by mail or by Fax.. In both cases, the correct part number has to be specified.

The following information must be supplied to eliminate delays in processing your order :

1. Complete address
2. Complete part numbers and quantities required
3. Description of parts
4. Model number for which part is required
5. Way of shipment
6. Signature : any order form or Fax. must be signed, otherwise such part order will be considered as null and void.

USA

MARANTZ AMERICA, INC
100 CORPORATE DRIVE
MAHWAH, NEW JERSEY 07430
USA

EUROPE / TRADING

MARANTZ EUROPE B.V.
P. O. BOX 8744, BUILDING SILVERPOINT
BEEMDSTRAAT 11, 5653 MA EINDHOVEN
THE NETHERLANDS
PHONE : +31 - 40 - 2507844
FAX : +31 - 40 - 2507860

CANADA

D&M CANADA INC.
5-505 APPLE CREEK BLVD.
MARKHAM, ONTARIO L3R 5B1
CANADA

JAPAN

D&M Holdings Inc.
D&M BUILDING, 2-1 NISSHIN-CHO,
KAWASAKI-KU, KAWASAKI-SHI,
KANAGAWA, 210-8569 JAPAN

株式会社 ディーアンドエムホールディングス

本 社 〒210-8569
神奈川県川崎市川崎区日進町2-1 D&Mビル



KOREA

D&M SALES AND MARKETING KOREA LTD.
CHUNG JIN B/D., #1001,
53-5, WONHYORO 3 GA, YONGSAN-GU,
SEOUL, 140-719, KOREA
PHONE : +82 - 2 - 323 - 2155
FAX : +82 - 2 - 323 - 2154


CHINA

MARANTZ SHANGHAI TRADING LTD.
ROOM.506 SHANGHAI LIGHT INDUSTRY MANSION
1578 NANJING (WEST) ROAD SHANGHAI
CHINA
TEL : 021 - 6248 - 1064
FAX : 021 - 6248 - 3565

NOTE ON SAFETY :

Symbol  Fire or electrical shock hazard. Only original parts should be used to replaced any part marked with symbol  . Any other component substitution (other than original type), may increase risk of fire or electrical shock hazard.

安全上の注意 :

 がついている部品は、安全上重要な部品です。必ず指定されている部品番号のものを使用して下さい。

SHOCK, FIRE HAZARD SERVICE TEST :

CAUTION : After servicing this appliance and prior to returning to customer, measure the resistance between either primary AC cord connector pins (with unit NOT connected to AC mains and its Power switch ON), and the face or Front Panel of product and controls and chassis bottom.

Any resistance measurement less than 1 Megohms should cause unit to be repaired or corrected before AC power is applied, and verified before it is return to the user/customer.

In case of difficulties, do not hesitate to contact the Technical
Department at above mentioned address.

1. TECHNICAL SPECIFICATIONS

RMS Power output

(40 Hz – 20 kHz simultaneous drive of both channels)

(8Ω load) 45W x 2

(4Ω load) 60W x 2

DIN Power Output

(40 Hz – 20 kHz simultaneous drive of both channels)

(8Ω load) 50W x 2

(4Ω load) 65W x 2

IHF Dynamic Power

(1 kHz simultaneous drive of both channels)

(8Ω load) 60W x 2

(4Ω load) 85W x 2

Total harmonic distortion

(40Hz – 20kHz simultaneous drive of both channels, 8Ω load)

..... 0.01%

Output band width

(8Ω load, 0.06%) 10Hz – 30kHz

Frequency response

(CD, 1W, 8Ω load) 10Hz – 50kHz +0dB, -3dB

Dumping factor

(8Ω load, 40Hz – 20kHz) 100

Input sensitivity/Input impedance

PHONO (MM) 2.8mV/47kΩ

CD, LINE, TUNER, AUX/DVD, RECORDER

..... 190mV/20kΩ

Maximum allowable PHONO input level (1kHz)

MM 130mV

RIAA deviation (40Hz ~ 20kHz) ±0.5dB

S/N (IHF-A, 1W, 8Ω load)

PHONO (MM) 83dB (5mV input)

CD, LINE, TUNER, AUX/DVD, RECORDER ... 87dB (500mV input)

Tone control

Bass (100Hz) ±10dB

Treble (10kHz) ±10dB

Power requirement AC 230V 50Hz

Power consumption

(EN60065) 130W

(4Ω, 45W x 2 output) 250W

Accessories

Remote controller 1

AAA batteries 2

Detachable AC power cable 1

Maximum outer dimensions (Amplifier)

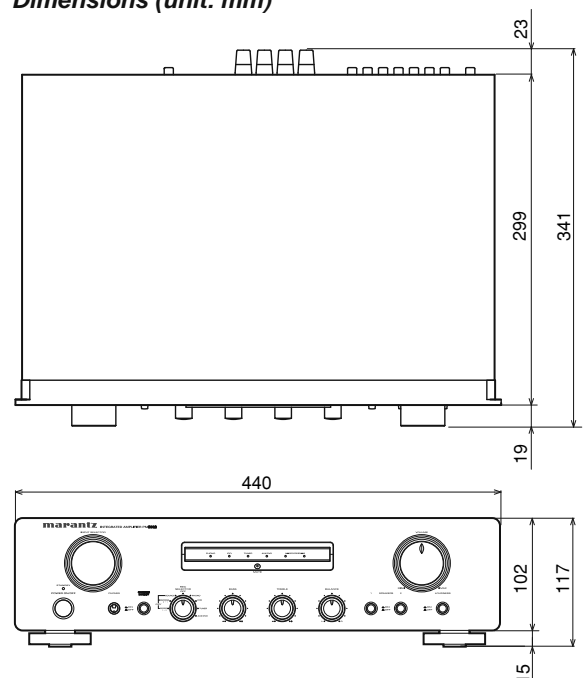
Width 440mm

Height 117mm

Depth 341mm

Weight (Amplifier) 7.1kg

• Dimensions (unit: mm)

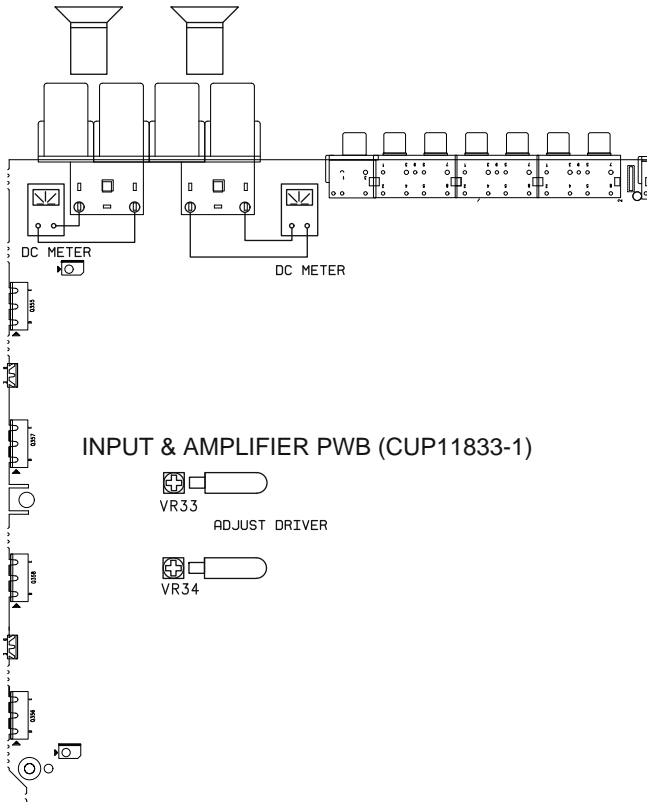


2. DC OFFSET VOLTAGE ADJUSTMENT

CONTROLS SETTING :

- TONE(BASS & TREBLE) : MID POSITION
- BALANCE : MID POSITION
- VOLUME : MINIMUM POSITION
- LOUDNESS : OFF POSITION
- TONE DEFEAT : OFF POSITION
- SPEAKER 1, 2 : ON POSITION

ADJUST	MESURED ACROSS	VOLTMETER READING
VR33	SPEAKER OUT (L-CH)	+ - 50mV
VR34	SPEAKER OUT(R-CH)	+ - 50mV



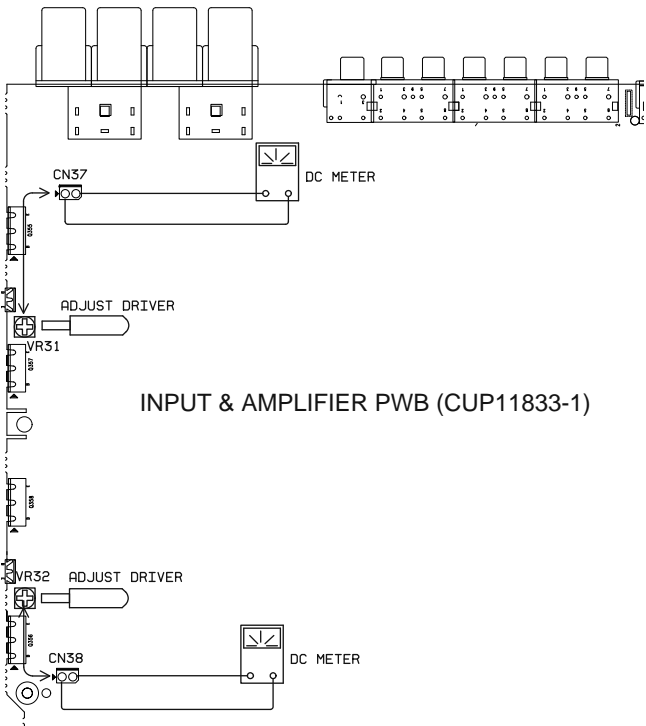
3. IDLING CURRENT ADJUSTMENT

After DC Offset Voltage Adjustment is completed, adjust the Idling Current with the variable resistor VR31 and VR32 on the PWB.

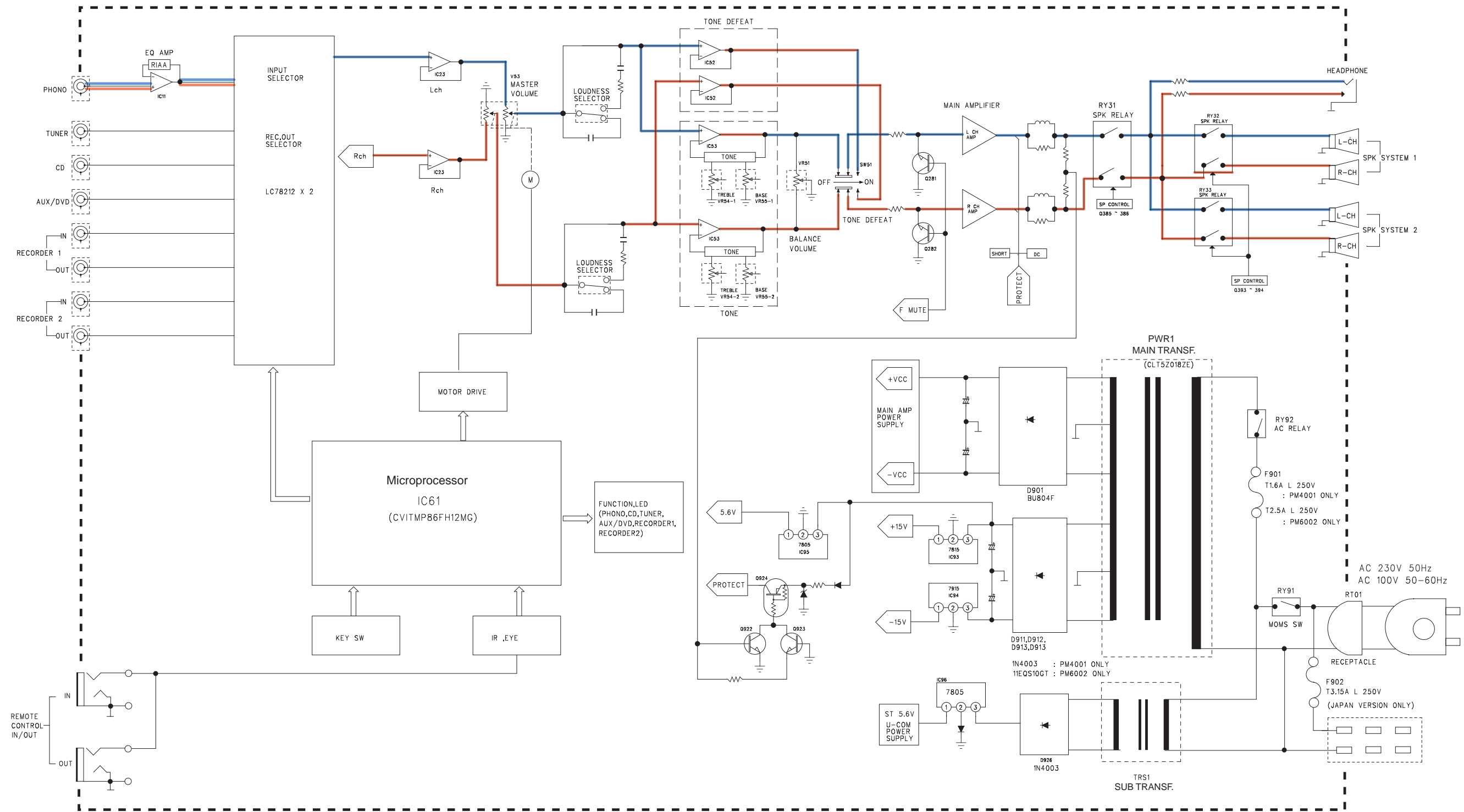
CONTROLS SETTING :

- TONE(BASS & TREBLE) : MID POSITION
- BALANCE : MID POSITION
- VOLUME : MINIMUM POSITION
- LOUDNESS : OFF POSITION
- TONE DEFEAT : OFF POSITION

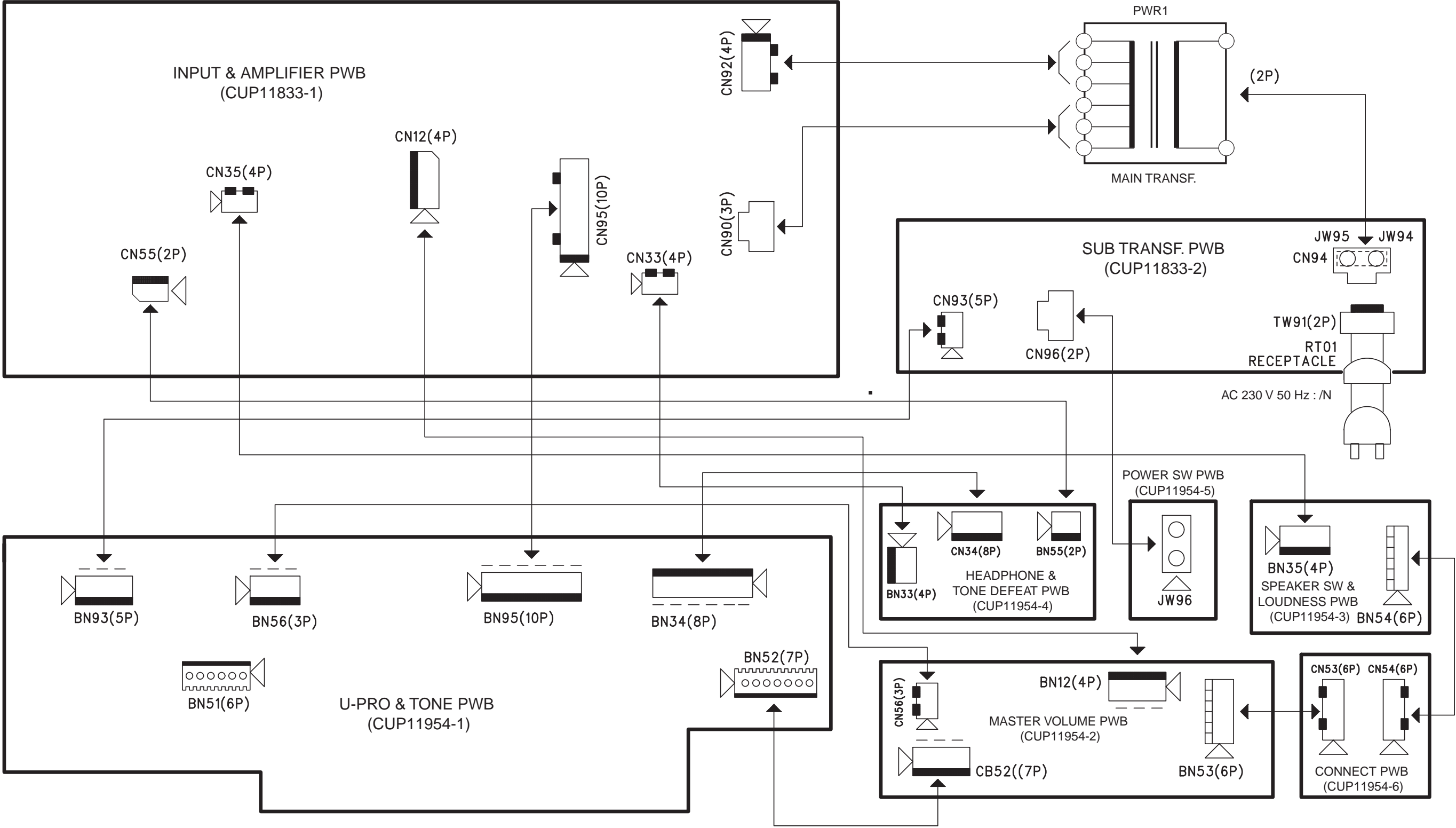
ADJUST	MESURED ACROSS	VOLTMETER READING
VR31	CN37	5mV
VR32	CN38	5mV



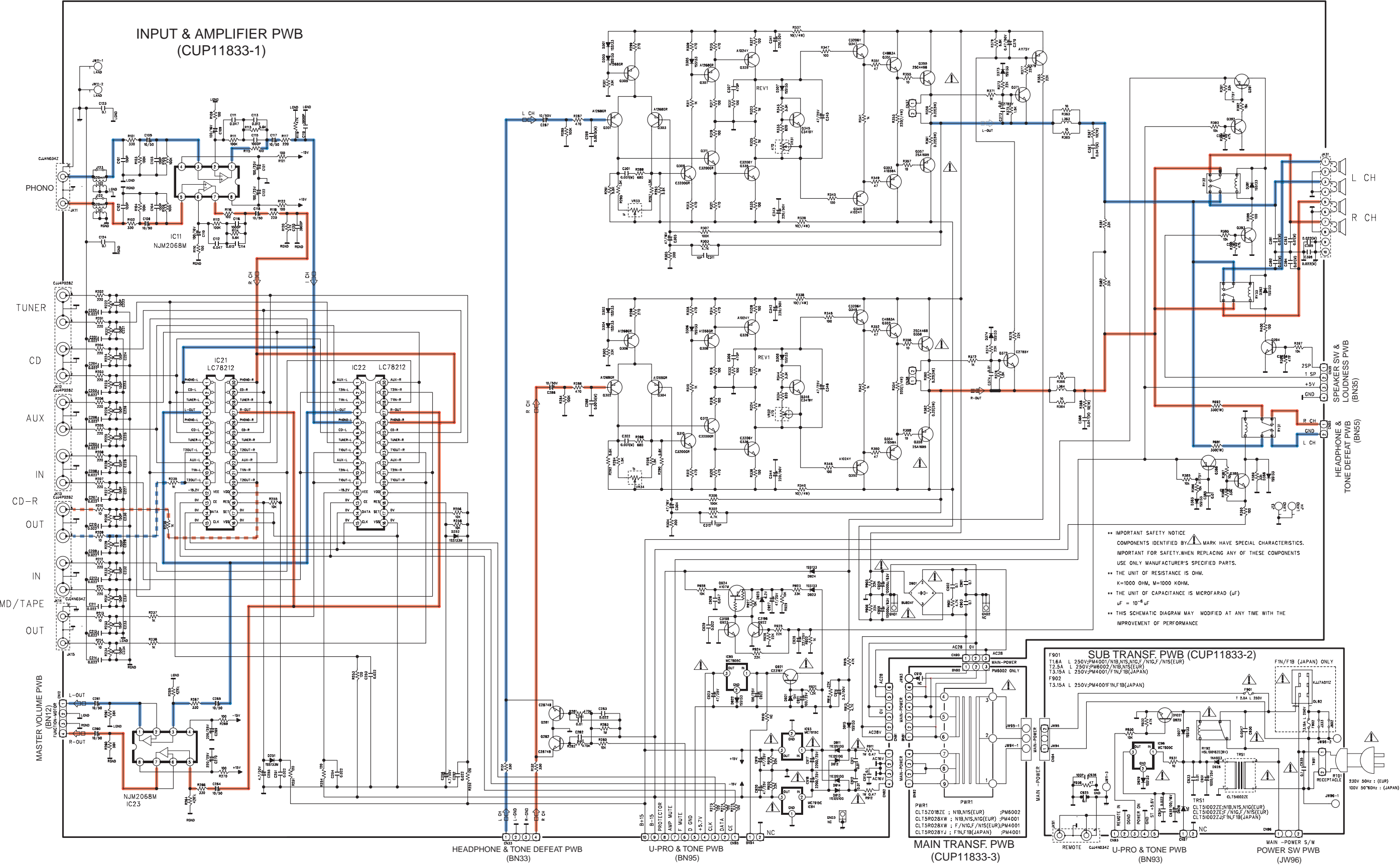
4. BLOCK DIAGRAM

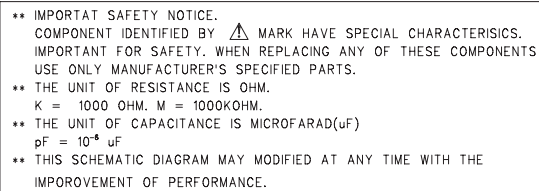


5. WIRING DIAGRAM



6. SCHEMATIC DIAGRAM





7. PARTS LOCATION

U-PRO & TONE A PWB

Q603
Q604
Q605

Q689

Q617

Q692

Q613

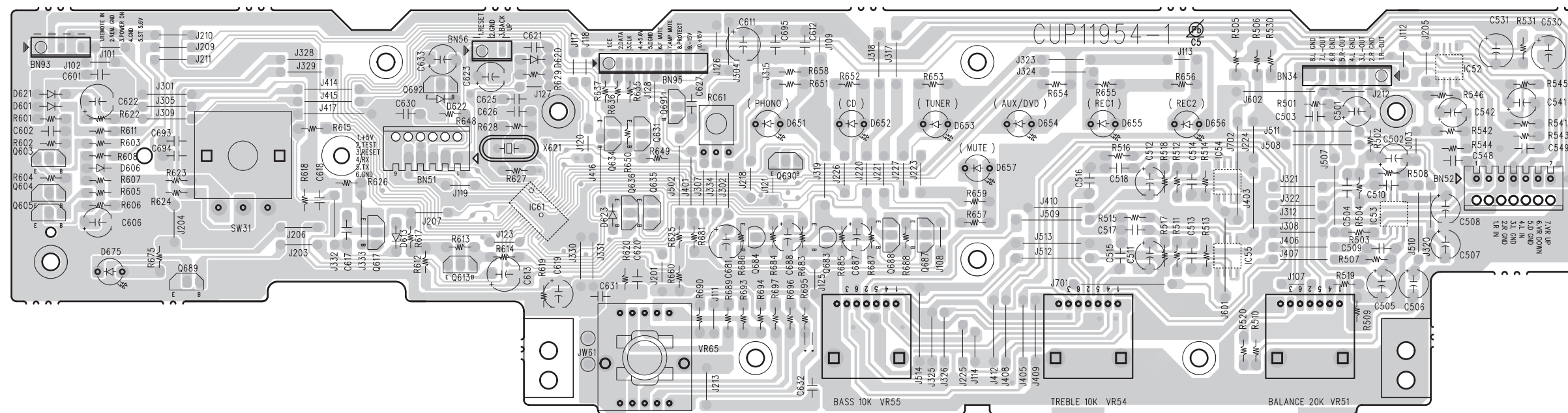
Q634 Q631 Q691
Q636 Q635

Q690

Q684

Q683

Q688 Q687



U-PRO & TONE B PWB

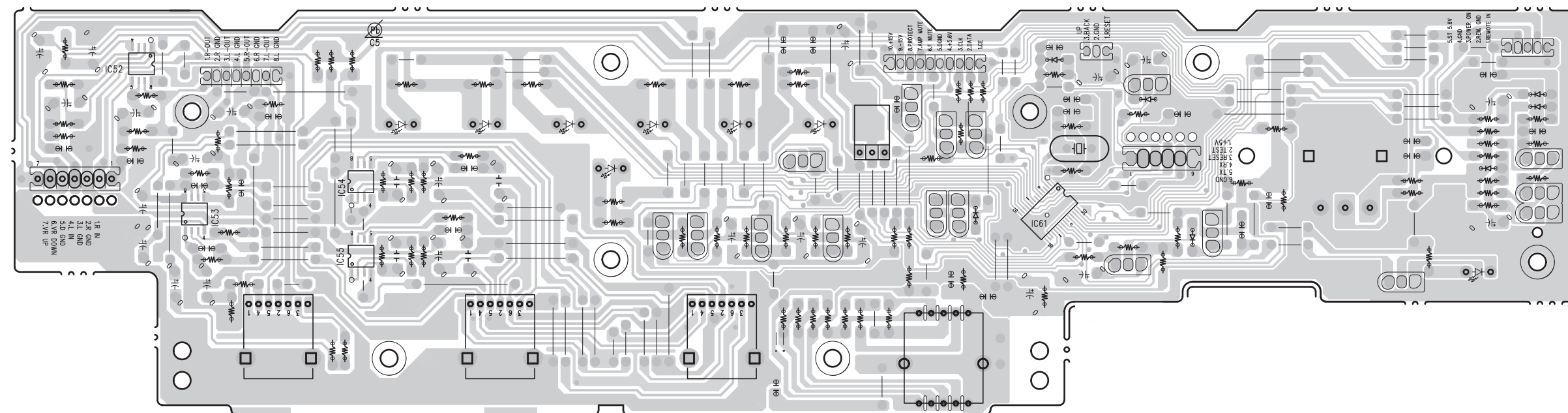
IC52

IC53

IC54

IC55

IC61



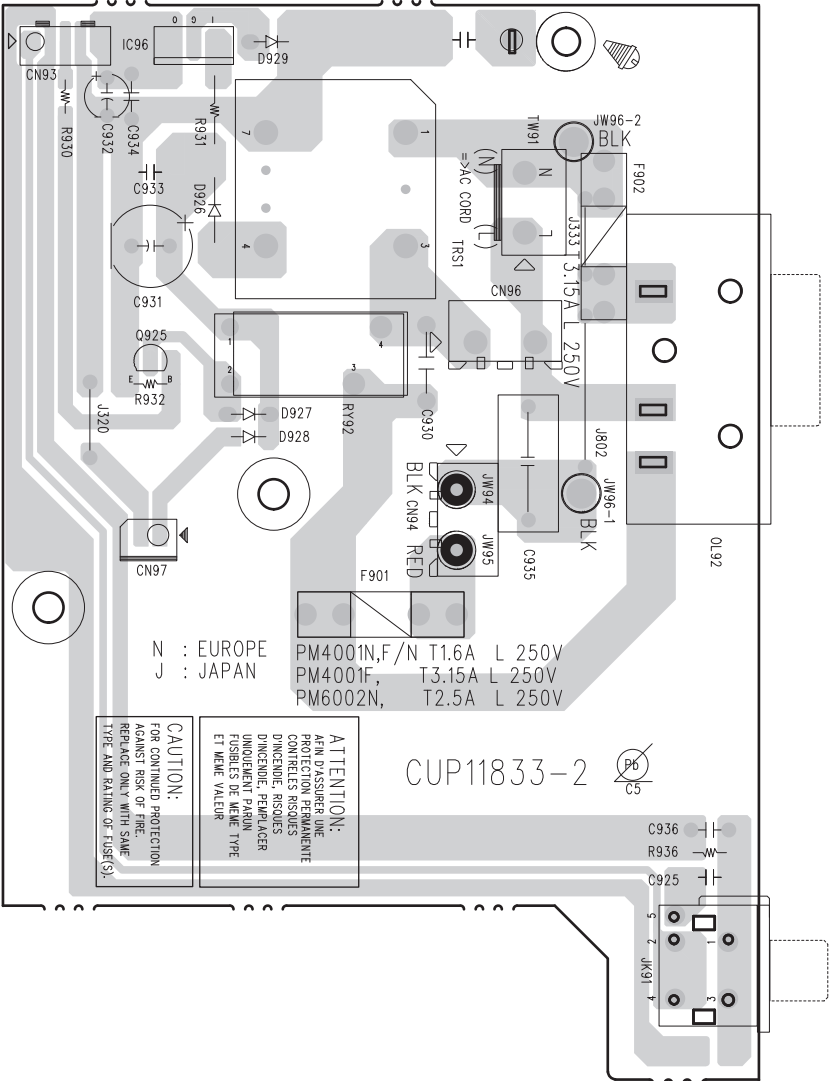
鉛フリー半田

半田付けには、鉛フリー半田 (Sn-Ag-Cu) を使用してください。

Lead-free Solder

When soldering, use the Lead-free Solder (Sn-Ag-Cu).

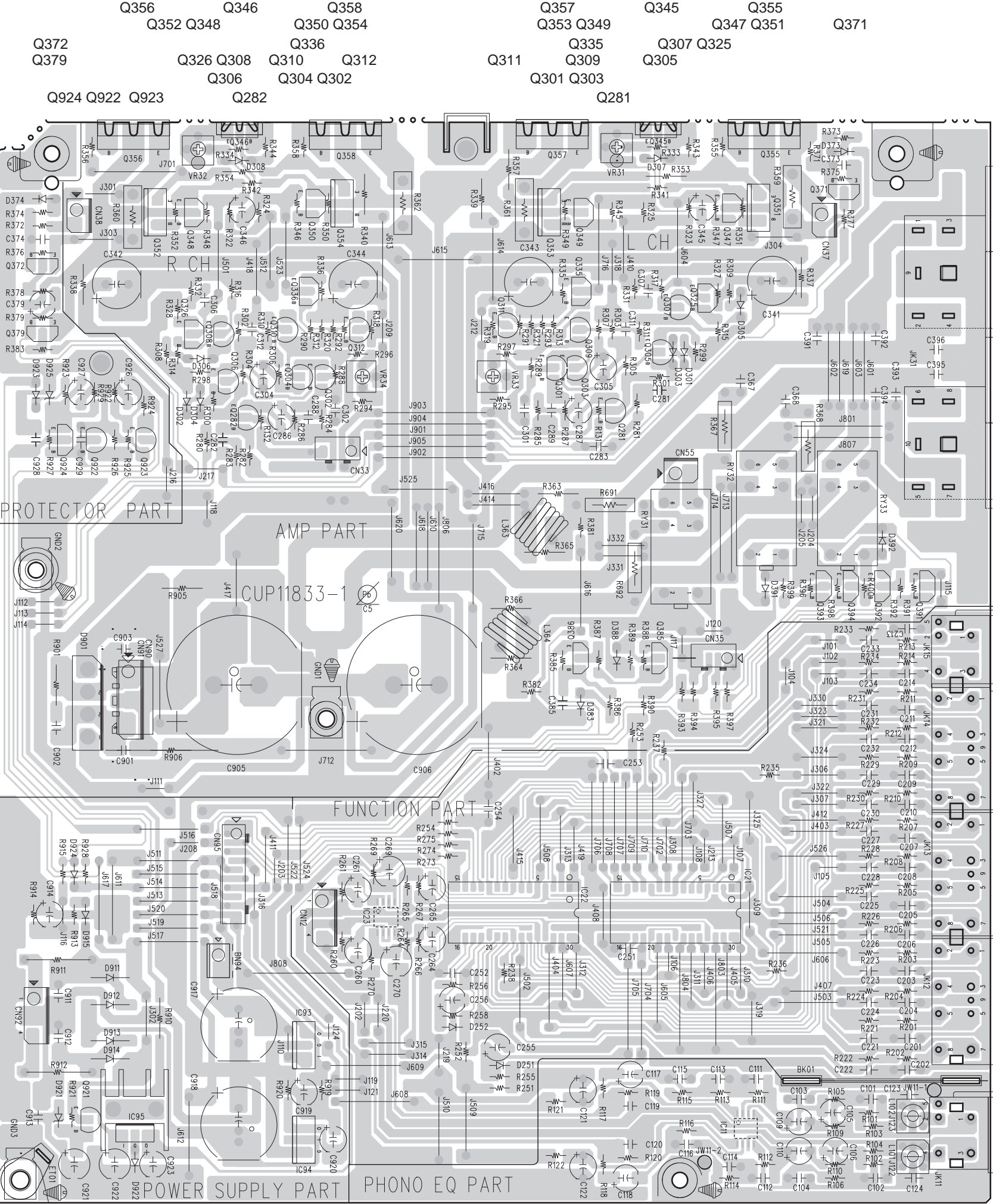
SUB TRANSF. A PWB
IC96
Q925



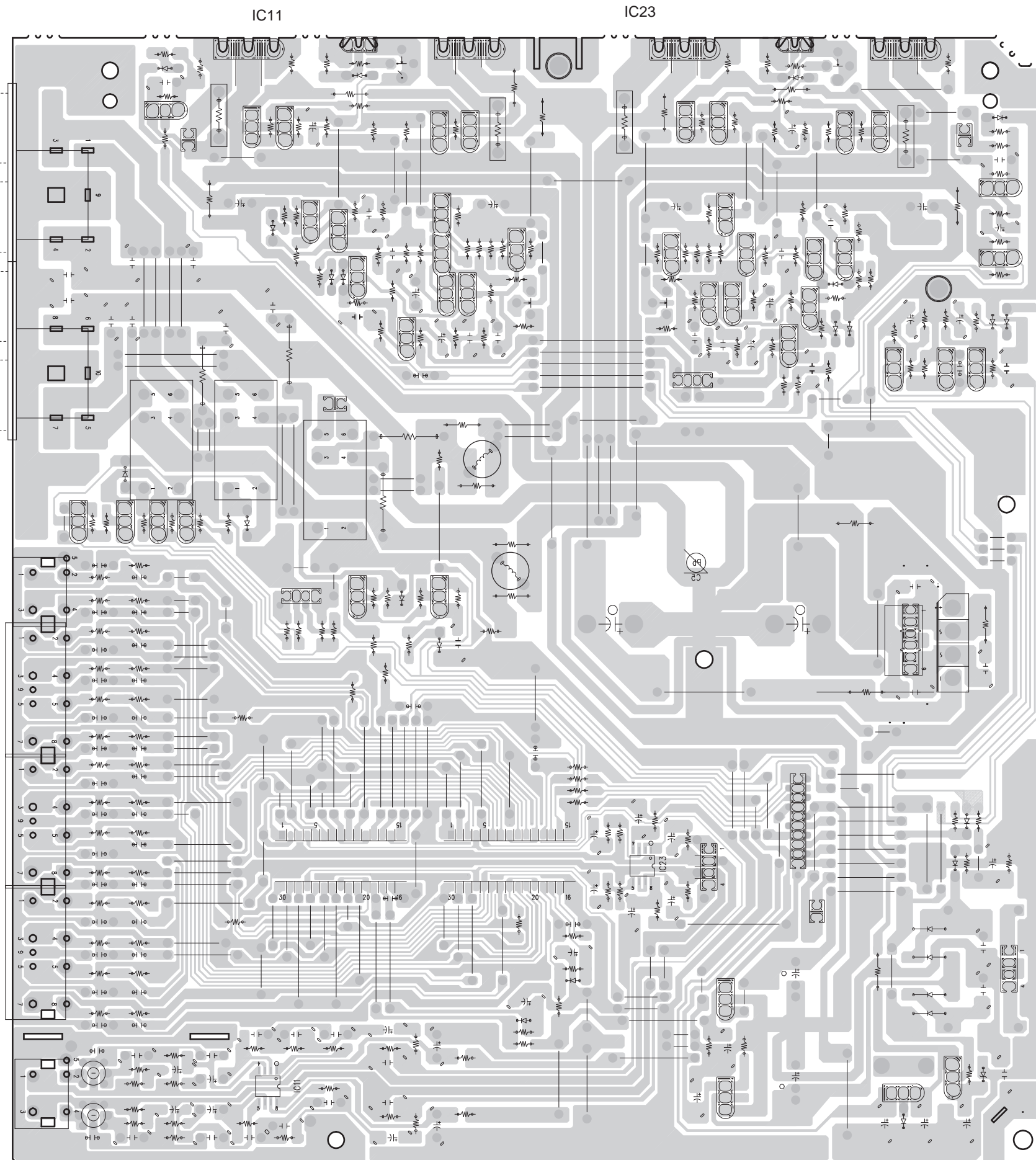
鉛フリー半田
半田付けには、鉛フリー半田 (Sn-Ag-Cu) を使用してください。

Lead-free Solder
When soldering, use the Lead-free Solder (Sn-Ag-Cu).

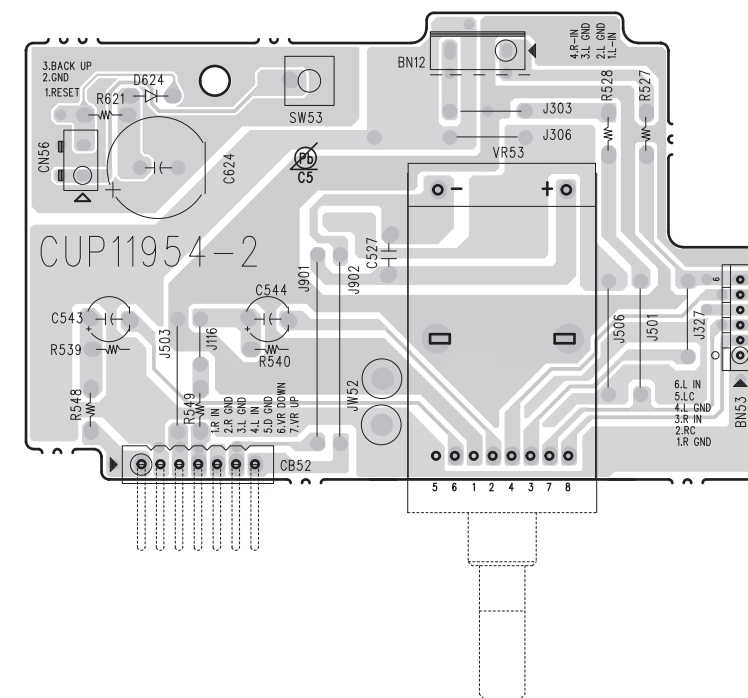
INPUT & AMPLIFIER A PWB



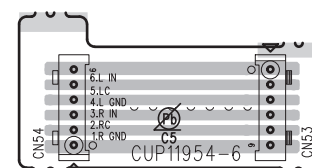
INPUT & AMPLIFIER B PWB



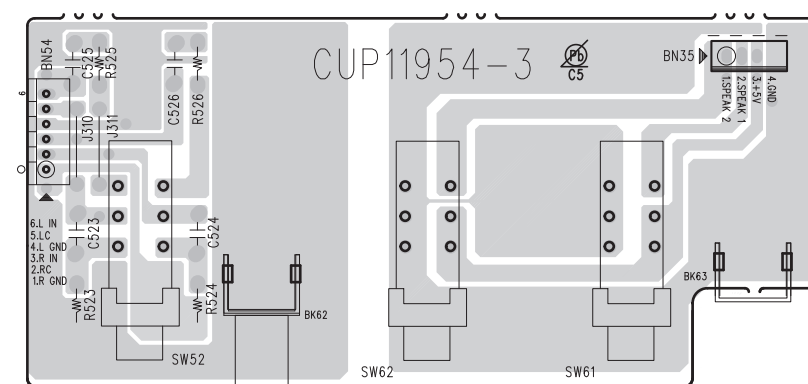
MASTER VOLUME A PWB



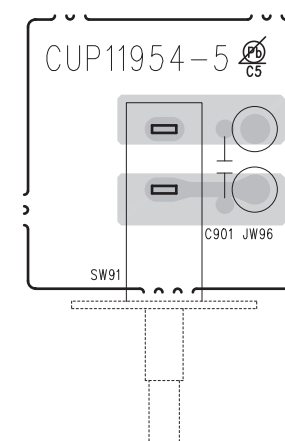
CONNECT A PWB



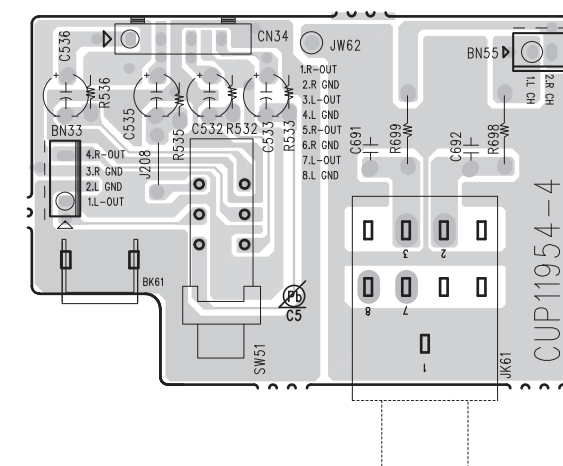
SPEAKER SW & LOUDNESS A PWB



POWER SW A PWB



HEADPHONE & TONE DEFEAT A PWB



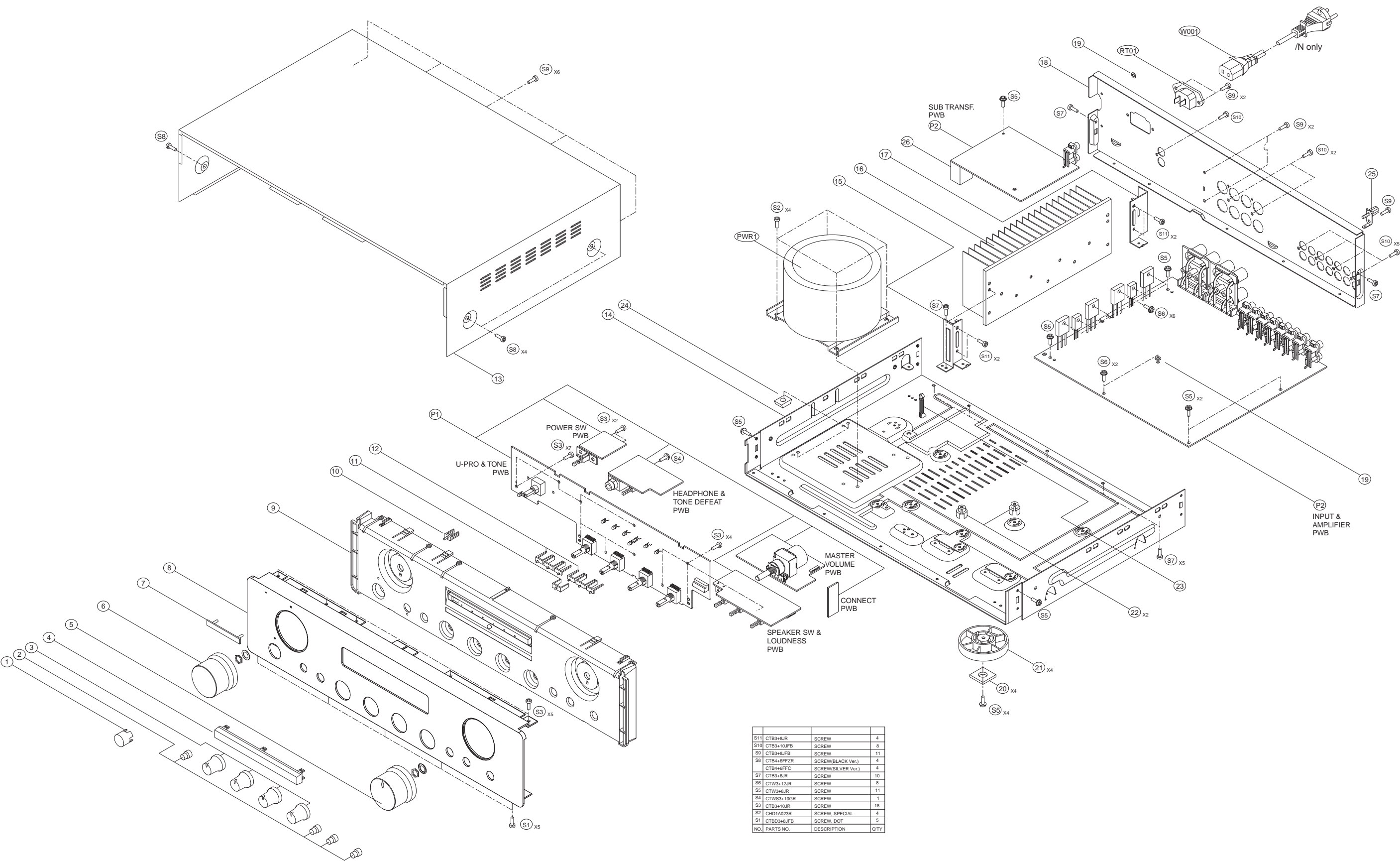
鉛フリー半田

半田付けには、鉛フリー半田 (Sn-Ag-Cu) を使用してください。

Lead-free Solder

When soldering, use the Lead-free Solder (Sn-Ag-Cu).

8. EXPLODED VIEW AND PARTS LIST



S11	CTB3+6JR	SCREW	4
S10	CTB3+10JFB	SCREW	8
S9	CTB3+8JFB	SCREW	11
S8	CTB4+6FFZR	SCREW(BLACK Ver.)	4
	CTB4+6FFC	SCREW(SILVER Ver.)	4
S7	CTB3+6JR	SCREW	10
S6	CTW3+12JR	SCREW	8
S5	CTW3+8JR	SCREW	11
S4	CTW3+10GR	SCREW	1
S3	CTB3+10JR	SCREW	18
S2	CHD1A023R	SCREW, SPECIAL	4
S1	CTB03+8JFB	SCREW, DOT	5
NO.	PARTS NO.	DESCRIPTION	QTY

P.W.B. NAME	POS. NO.	VERS. COLOR	PART NO. (FOR EUR)	PART NO. (MZ)	PART NAME	DESCRIPTION	
	1	/N1B	90M285W270010	90M285W270010	BUTTON	KNOB POWER BLACK	CBC1A122K92
	1	/N1S	90M44BW270210	90M44BW270210	BUTTON	KNOB POWER SILVER	CBC1A122R6G13
	2	/N1B	90M44BW270060	90M44BW270060	BUTTON	KNOB SPEAKER	CBC1A123K92
	2	/N1S	90M44BW270260	90M44BW270260	BUTTON	KNOB SPEAKER SILVER	CBC1A123R6G13
	3	/N1B	00M274W154030	00M274W154030	KNOB	KNOB FOR BALANCE(KBN1A115)	CBN1A115K92
	3	/N1S	00M274W154230	00M274W154230	KNOB	BALANCE KNOB SILVER	CBN1A115R6G13
	4	/N1B	00M44BW158110	00M44BW158110	WINDOW	INDICATOR BLACK/GOLD	CGU1A377Z
	4	/N1S	00M44BW158210	00M44BW158210	WINDOW	INDICATOR SILVER	CGU1A377Y
	5	/N1B	00M44BW154010	00M44BW154010	KNOB	VOLUME KNOB BLACK	CGX1A371ZA
	5	/N1S	00M44BW154210	00M44BW154210	KNOB	VOLUME KNOB SILVER	CGX1A371XA
	6	/N1B	00M44BW154020	00M44BW154020	KNOB	FUNCTION KNOB BLACK	CGX2A371ZA
	6	/N1S	00M44BW154220	00M44BW154220	KNOB	FUNCTION KNOB SILVER	CGX2A371XA
	7	/N1B	00M24AW251010	00M24AW251010	BADGE	NEW MZ BADGE	CGB1A117
	7	/N1S	00M24AW251020	00M24AW251020	BADGE	NEW MZ BADGE SILVER	CGB1A117G
	8	/N1B	00M44CW248010	00M44CW248010	PANEL	PANEL FRONT BLACK CKM1A165	CKM1A165YC23
	8	/N1S	00M44CW248210	00M44CW248210	PANEL	PANEL FRONT SILVER CKM1A165	CKM1A165YC40
	9	/N1B	00M44BW105010	00M44BW105010	CHASSIS	PANEL SUB BLACK	CGW1A409R4K92
	9	/N1S	00M44BW105210	00M44BW105210	CHASSIS	PANEL SUB SILVER	CGW1A409R6G13
	10		00M274W355020	00M274W355020	LENS	INDICATOR STANDBY	CGL1A174
	11		00M44BW355020	00M44BW355020	LENS	INDICATOR MUTE	CGL1A239
	12		00M44BW355010	00M44BW355010	LENS	INDICATOR FUNCTION	CGL1A238
	14		nsp	nsp	CHASSIS	BOTTOM CHASSIS PM6002	CUA3A182
	15		nsp	nsp	BRACKET	A4-97-2814	CMD1A366
	16		nsp	nsp	HEATSINK	HEATSINK	CMY1A286
	17		nsp	nsp	BRACKET	A4-97-2815	CMD1A367
	18		nsp	nsp	PANEL	REAR PANEL PM6002	CKF4A187H
	19		nsp	nsp	WASHER	WASHER GROUND COPPER	CNW1A035
	20		00M32CW107010	00M32CW107010	SHEET	CUSHION FOOT	CHG1A360
	21	/N1B	00M243W057010	00M243W057010	LEG	LEG GOLD/BLACK	CKL2A042H11
	21	/N1S	00M243W057210	00M243W057210	LEG	LEG FOR SILVER	CKL2A042H46
	22		nsp	nsp	HOLDER	HOLDER PWB	CHE170
	23		nsp	nsp	SUPPORT	SJBS-26R	KRE1A006
	24		nsp	nsp	BUFFER	RUBBER	CHG1A113
	25		nsp	nsp	TERMINAL	GROUND TERMINAL	KMA1A006
	26		nsp	nsp	BUFFER	CUSHION STOPPER	CHG1A162
	BN91		nsp	nsp	CORD	WIRE ASSY	CWZSR4001BN91
	P1	/N1B	nsp	nsp	PWB ASSY	FRONT PWB ASSY	COP11954D
	P1	/N1S	nsp	nsp	PWB ASSY	FRONT PWB ASSY	COP11954E
	P2		nsp	nsp	PWB ASSY	MAIN PWB ASSY	COP11833F
	▲ PWR1		90M-TS003190R	90M-TS003190R	TRANSF.	# TROIDAL PM6002	CLT5Z018ZE
	▲ RT01		00MYJ04002640	00MYJ04002640	INLET	! R-301(21) AC INLET	CJJ8A006ZW
	RT91		nsp	nsp	CORD	WIRE ASSY	CWZSR4001BN91A
			90M-FC500030R	90M-FC500030R	FERRITE CORE	FERRITE RING 29X7.7X19	CLZ9W003Z
			90M-FC500030R	90M-FC500030R	FERRITE CORE	FERRITE RING 29X7.7X19	CLZ9W003Z
PACKING							
			00M44CW851310	00M44CW851310	USER GUIDE	USER GUIDE PM6002 N	CQX1A1261Z
			00MZK26CW0010	00MZK26CW0010	UNIT KIT	REMOTE CONTROLLER RC002PM	CARTPM4001RC
	▲ W001		90M-ZC000320R	90M-ZC000320R	MAINS CORD	! MAINS CORD 2WIRE 10A/250V	CJA2B054Z
NOT STANDARD SPARE PART							
			nsp	00M44CW801010	PACKING CASE	PACKING CASE PM6002	CPG1A844Z
			nsp	00M44CW809010	CUSHION	CUSHION	CPS2A797
	13	/N1B	nsp	00M274W257030	LID	TOP LID BLACK KBC1A104	CKC3A104K117
	13	/N1S	nsp	00M274W257130	LID	TOP LID SILVER KBC1A104	CKC3A104G14

NOTE : "nsp" PART IS LISTED FOR REFERENCE ONLY, MARANTZ WILL NOT SUPPLY THESE PARTS.

9. MICROPROCESSOR

IC61 : TMP86FH12MG

PIN No	NAME	I/O	ACTIVE	DESCRIPTION
1	VSS	-		Digital GND Votage
2	XIN	I		Oscillator Input Port
3	XOUT	O		Oscillator Output Port
4	TEST	I	H	Fixed to high
5	VDD	-		Power Supply Port (+5V)
6	P_AMUTE	O	L	POWER AUDIO MUTE Control Port ("L")
7	P_FMUTE	O	L	POWER FUNCTION MUTE Control Port ("L")
8	RESET	I	L	Reset Input Port ("L")
9	BACK UP	I	L	BACK_UP Mode Control Port ("L")
10	MD/TAPE_LED	O	H	MD/TAPE_LED Control Port("H")
11	CD_R_LED	O	L	CD_R_LED Control Port
12	AUX/DVD_LED	O	L	AUX/DVD_LED Control Port
13	TUNER_LED	O	L	TUNER_LED Control Port
14	CD_LED	O	L	CD_LED Control Port
15	PHONO_LED	O	L	PHONO_LED Control Port
16	MUTE_LED	O	L	MUTE_LED Control Port ("L")
17	REMOTE(EXT)	I	L	REMOTE Input Port
18	REMOTE(EXT)	I	L	REMOTE Input Port
19	VR_UP	O	L	VR_UP Control Port
20	VR_DOWN	O	L	VR_DOWN Control Port
21	POWER_ON	O	H	Unit Power On Control Port ("H")
22	PROTECT IN	I	L	PROTECT Input Port("L")
23	REC_SEL	I	L	REC_SELECT Input Port
24	STANDBY_LED	O	H	STANDBY_LED Control Port ("H")
25	P23(AIN2)	-	-	NO Connection Port
26	EN1(SCROLL_DN)	I	L	Scroll Down Control Port
27	EN2(SCROLL_UP)	I	L	Scroll Up Control Port
28	CE1	I	H	Chip Enable"1" Control Port
29	DATA	I	L	Data Input Port
30	CLK	O	L	Clock Output Port

P.W.B. NAME	POS. NO.	VERS. COLOR	PART NO. (FOR EUR)	PART NO. (MZ)	PART NAME	DESCRIPTION
					CONNECT PWB (CUP11954-6)	
CONN.	CN53		90M-YP100340R	90M-YP100340R	CONN.	6P STRAIGHT CJP06GA98ZY
CONN.	CN54		90M-YP100340R	90M-YP100340R	CONN.	6P STRAIGHT CJP06GA98ZY
					HEADPHONE & TONE DEFEAT PWB (CUP11954-4)	
H/P	BK61		nsp	nsp	BRACKET	BRACKET PWB CMD1A387
H/P	BN33		nsp	nsp	CORD	WIRE ASSY CWZPM4001BN33
H/P	BN55		nsp	nsp	CORD	WIRE ASSY CWB1C902450BM
H/P	C532		nsp	00MOA10605020	ELECT CAP.	10UF 50V CCEA1HH100T
H/P	C533		nsp	00MOA10605020	ELECT CAP.	10UF 50V CCEA1HH100T
H/P	C535		nsp	00MOA10603520	ELECT CAP.	10UF 35V ROS HCEA1VR100T
H/P	C536		nsp	00MOA10603520	ELECT CAP.	10UF 35V ROS HCEA1VR100T
H/P	C691		nsp	nsp	FILM CAP.	0.01UF 50V J HCQI1H103JZT
H/P	C692		nsp	nsp	FILM CAP.	0.01UF 50V J HCQI1H103JZT
H/P	CN34		nsp	nsp	CONN.	8P STRAIGHT CJP08GA19ZY
H/P	J208		nsp	nsp	CORD	SN95/PB5 0.6 C3A206
H/P	JK61	/N1B	90M-YT003160R	90M-YT003160R	TERMINAL	HTJ-064-05NG HEADPHONE JACK CJJ2E020Z
H/P	JK61	/N1S	90M-YT004500R	90M-YT004500R	TERMINAL	JACK HEADPHONE(SILVER) CJJ2E026Z
H/P	JW62		nsp	nsp	CORD	WIRE ASSY CWZAH300JW74
H/P	R532		nsp	nsp	RES.	56K OHM 1/5W J CRD20TJ563T
H/P	R533		nsp	nsp	RES.	56K OHM 1/5W J CRD20TJ563T
H/P	R535		nsp	nsp	RES.	56K OHM 1/5W J CRD20TJ563T
H/P	R536		nsp	nsp	RES.	56K OHM 1/5W J CRD20TJ563T
H/P	R698		nsp	nsp	RES.	47 OHM 1/4W J CRD25TJ470T
H/P	R699		nsp	nsp	RES.	47 OHM 1/4W J CRD25TJ470T
H/P	SW51		90M-SP001330R	90M-SP001330R	SW	PUSH SWITCH CSH2B019Z
					INPUT & AMPLIFIER PWB (CUP11833-1)	
INPUT	BK01		nsp	nsp	SHIELD	SHIELD PLATE CMD1A576
INPUT	C101		nsp	nsp	CER. CAP.	100PF 50V KB CCKT1H101KB
INPUT	C102		nsp	nsp	CER. CAP.	100PF 50V KB CCKT1H101KB
INPUT	C103		nsp	nsp	CER. CAP.	100PF 50V KB CCKT1H101KB
INPUT	C104		nsp	nsp	CER. CAP.	100PF 50V KB CCKT1H101KB
INPUT	C105		nsp	00MOA10605020	ELECT CAP.	10UF 50V CCEA1HH100T
INPUT	C106		nsp	00MOA10605020	ELECT CAP.	10UF 50V CCEA1HH100T
INPUT	C109		nsp	00MOA10701620	ELECT CAP.	100UF 16V CCEA1CH101T
INPUT	C110		nsp	00MOA10701620	ELECT CAP.	100UF 16V CCEA1CH101T
INPUT	C111		nsp	nsp	FILM CAP.	0.047UF 50V J HCQI1H473JZT
INPUT	C112		nsp	nsp	FILM CAP.	0.047UF 50V J HCQI1H473JZT
INPUT	C113		nsp	nsp	FILM CAP.	0.012UF 50V J HCQI1H123JZT
INPUT	C114		nsp	nsp	FILM CAP.	0.012UF 50V J HCQI1H123JZT
INPUT	C115		nsp	nsp	FILM CAP.	1000PF 50V J HCQI1H102JZT
INPUT	C116		nsp	nsp	FILM CAP.	1000PF 50V J HCQI1H102JZT
INPUT	C117		nsp	00MOA10605020	ELECT CAP.	10UF 50V CCEA1HH100T
INPUT	C118		nsp	00MOA10605020	ELECT CAP.	10UF 50V CCEA1HH100T
INPUT	C119		nsp	nsp	FILM CAP.	3900PF 50V J HCQI1H392JZT
INPUT	C120		nsp	nsp	FILM CAP.	3900PF 50V J HCQI1H392JZT
INPUT	C121		nsp	00MOA10702520	ELECT CAP.	100UF 25V CCEA1EH101T
INPUT	C122		nsp	00MOA10702520	ELECT CAP.	100UF 25V CCEA1EH101T
INPUT	C123		nsp	nsp	CER. CAP.	0.1UF 50V Z HCBS1H104ZFT
INPUT	C124		nsp	nsp	CER. CAP.	0.1UF 50V Z HCBS1H104ZFT
INPUT	C201		nsp	nsp	CER. CAP.	0.022UF 50V Z HCBS1H223ZFT
INPUT	C202		nsp	nsp	CER. CAP.	0.022UF 50V Z HCBS1H223ZFT
INPUT	C203		nsp	nsp	CER. CAP.	0.022UF 50V Z HCBS1H223ZFT
INPUT	C204		nsp	nsp	CER. CAP.	0.022UF 50V Z HCBS1H223ZFT
INPUT	C205		nsp	nsp	CER. CAP.	0.022UF 50V Z HCBS1H223ZFT
INPUT	C206		nsp	nsp	CER. CAP.	0.022UF 50V Z HCBS1H223ZFT
INPUT	C207		nsp	nsp	CER. CAP.	0.022UF 50V Z HCBS1H223ZFT
INPUT	C208		nsp	nsp	CER. CAP.	0.022UF 50V Z HCBS1H223ZFT
INPUT	C209		nsp	nsp	CER. CAP.	0.022UF 50V Z HCBS1H223ZFT
INPUT	C210		nsp	nsp	CER. CAP.	0.022UF 50V Z HCBS1H223ZFT
INPUT	C211		nsp	nsp	CER. CAP.	0.022UF 50V Z HCBS1H223ZFT
INPUT	C212		nsp	nsp	CER. CAP.	0.022UF 50V Z HCBS1H223ZFT
INPUT	C213		nsp	nsp	CER. CAP.	0.022UF 50V Z HCBS1H223ZFT
INPUT	C214		nsp	nsp	CER. CAP.	0.022UF 50V Z HCBS1H223ZFT
INPUT	C221		nsp	nsp	CER. CAP.	150PF 50V K HCBS1H151KBT
INPUT	C222		nsp	nsp	CER. CAP.	150PF 50V K HCBS1H151KBT
INPUT	C223		nsp	nsp	CER. CAP.	150PF 50V K HCBS1H151KBT
INPUT	C224		nsp	nsp	CER. CAP.	150PF 50V K HCBS1H151KBT

NOTE : "nsp" PART IS LISTED FOR REFERENCE ONLY, MARANTZ WILL NOT SUPPLY THESE PARTS.

P.W.B. NAME	POS. NO.	VERS. COLOR	PART NO. (FOR EUR)	PART NO. (MZ)	PART NAME	DESCRIPTION
INPUT	C225		nsp	nsp	CER. CAP.	150PF 50V K HCBS1H151KBT
INPUT	C226		nsp	nsp	CER. CAP.	150PF 50V K HCBS1H151KBT
INPUT	C227		nsp	nsp	CER. CAP.	150PF 50V K HCBS1H151KBT
INPUT	C228		nsp	nsp	CER. CAP.	150PF 50V K HCBS1H151KBT
INPUT	C229		nsp	nsp	CER. CAP.	150PF 50V K HCBS1H151KBT
INPUT	C230		nsp	nsp	CER. CAP.	150PF 50V K HCBS1H151KBT
INPUT	C231		nsp	nsp	CER. CAP.	150PF 50V K HCBS1H151KBT
INPUT	C232		nsp	nsp	CER. CAP.	150PF 50V K HCBS1H151KBT
INPUT	C233		nsp	nsp	CER. CAP.	150PF 50V K HCBS1H151KBT
INPUT	C234		nsp	nsp	CER. CAP.	150PF 50V K HCBS1H151KBT
INPUT	C251		nsp	nsp	CER. CAP.	0.022UF 50V Z HCBS1H223ZFT
INPUT	C252		nsp	nsp	CER. CAP.	0.022UF 50V Z HCBS1H223ZFT
INPUT	C253		nsp	nsp	CER. CAP.	0.022UF 50V Z HCBS1H223ZFT
INPUT	C254		nsp	nsp	CER. CAP.	0.022UF 50V Z HCBS1H223ZFT
INPUT	C255		nsp	00MOA47505020	ELECT CAP.	4.7UF 50V CCEA1HH4R7T
INPUT	C256		nsp	00MOA47505020	ELECT CAP.	4.7UF 50V CCEA1HH4R7T
INPUT	C260		nsp	00MOA106035Z0	ELECT CAP.	10UF 35V ROS HCEA1VR100T
INPUT	C261		nsp	00MOA106035Z0	ELECT CAP.	10UF 35V ROS HCEA1VR100T
INPUT	C264		nsp	00MOA106035Z0	ELECT CAP.	10UF 35V ROS HCEA1VR100T
INPUT	C265		nsp	00MOA106035Z0	ELECT CAP.	10UF 35V ROS HCEA1VR100T
INPUT	C269		nsp	00MOA22702520	ELECT CAP.	220UF 25V CCEA1EH221T
INPUT	C270		nsp	00MOA22702520	ELECT CAP.	220UF 25V CCEA1EH221T
INPUT	C281		nsp	nsp	CER. CAP.	0.01UF 50V Z CCFT1H103ZF
INPUT	C282		nsp	nsp	CER. CAP.	0.01UF 50V Z CCFT1H103ZF
INPUT	C283		nsp	nsp	CER. CAP.	0.022UF 50V Z HCBS1H223ZFT
INPUT	C286		nsp	00MOA106035Z0	ELECT CAP.	10UF 35V ROS HCEA1VR100T
INPUT	C287		nsp	00MOA106035Z0	ELECT CAP.	10UF 35V ROS HCEA1VR100T
INPUT	C288		nsp	nsp	FILM CAP.	1500PF 50V J HCQ11H152JZT
INPUT	C289		nsp	nsp	FILM CAP.	1500PF 50V J HCQ11H152JZT
INPUT	C301		00MOF55102570	00MOF55102570	FILM CAP.	1000PF 100V J CCMP2A102JS05T
INPUT	C302		00MOF55102570	00MOF55102570	FILM CAP.	1000PF 100V J CCMP2A102JS05T
INPUT	C304		nsp	00MOA476016Z0	ELECT CAP.	47UF 16V ROS HCEA1CR470T
INPUT	C305		nsp	00MOA476016Z0	ELECT CAP.	47UF 16V ROS HCEA1CR470T
INPUT	C306		00MOF55471570	00MOF55471570	FILM CAP.	DTG-100VDC-471J-TP CCMP2A471JS05T
INPUT	C307		00MOF55471570	00MOF55471570	FILM CAP.	DTG-100VDC-471J-TP CCMP2A471JS05T
INPUT	C311		nsp	nsp	CER. CAP.	10PF 50V DC CCT1H100DC
INPUT	C312		nsp	nsp	CER. CAP.	10PF 50V DC CCT1H100DC
INPUT	C341		nsp	00MOA22705020	ELECT CAP.	220UF 50V CCEA1HH221E
INPUT	C342		nsp	00MOA22705020	ELECT CAP.	220UF 50V CCEA1HH221E
INPUT	C343		nsp	00MOA22705020	ELECT CAP.	220UF 50V CCEA1HH221E
INPUT	C344		nsp	00MOA22705020	ELECT CAP.	220UF 50V CCEA1HH221E
INPUT	C345		nsp	00MOA47602520	ELECT CAP.	47UF 25V CCEA1EH470T
INPUT	C346		nsp	00MOA47602520	ELECT CAP.	47UF 25V CCEA1EH470T
INPUT	C367		nsp	nsp	FILM CAP.	0.047UF 50V J HCQ11H473JZT
INPUT	C368		nsp	nsp	FILM CAP.	0.047UF 50V J HCQ11H473JZT
INPUT	C373		nsp	nsp	FILM CAP.	0.01UF 50V J HCQ11H103JZT
INPUT	C374		nsp	nsp	FILM CAP.	0.01UF 50V J HCQ11H103JZT
INPUT	C379		nsp	00MOA47405020	ELECT CAP.	0.47UF 50V CCEA1HHR47T
INPUT	C385		nsp	nsp	CER. CAP.	0.01UF 50V Z CCFT1H103ZF
INPUT	C391		nsp	nsp	FILM CAP.	0.01UF 50V J HCQ11H103JZT
INPUT	C392		nsp	nsp	FILM CAP.	0.01UF 50V J HCQ11H103JZT
INPUT	C393		nsp	nsp	FILM CAP.	0.01UF 50V J HCQ11H103JZT
INPUT	C394		nsp	nsp	FILM CAP.	0.01UF 50V J HCQ11H103JZT
INPUT	C395		nsp	nsp	FILM CAP.	0.022UF 50V J HCQ11H223JZT
INPUT	C396		nsp	nsp	FILM CAP.	0.022UF 50V J HCQ11H223JZT
INPUT	C901		90M-OF100620R	90M-OF100620R	FILM CAP.	HMFS104J2AP050T CCME2A104JXT
INPUT	C902		90M-OF100620R	90M-OF100620R	FILM CAP.	HMFS104J2AP050T CCME2A104JXT
INPUT	C903		90M-OF100620R	90M-OF100620R	FILM CAP.	HMFS104J2AP050T CCME2A104JXT
INPUT	⚠ C905		90M-OA000660R	90M-OA000660R	ELECT CAP.	! LAO 63V/10.000UF CCET63VLA0103N
INPUT	⚠ C906		90M-OA000660R	90M-OA000660R	ELECT CAP.	! LAO 63V/10.000UF CCET63VLA0103N
INPUT	C911		nsp	nsp	FILM CAP.	0.01UF 50V J HCQ11H103JZT
INPUT	C912		nsp	nsp	FILM CAP.	0.01UF 50V J HCQ11H103JZT
INPUT	C913		90M-OF100620R	90M-OF100620R	FILM CAP.	HMFS104J2AP050T CCME2A104JXT
INPUT	C914		nsp	00MOA33505020	ELECT CAP.	3.3UF 50V CCEA1HH3R3T
INPUT	⚠ C917		00MOA47802520	00MOA47802520	ELECT CAP.	! 4700UF 25V RA-2 HCEA1ERA472E
INPUT	⚠ C918		00MOA47802520	00MOA47802520	ELECT CAP.	! 4700UF 25V RA-2 HCEA1ERA472E
INPUT	C919		nsp	00MOA47602520	ELECT CAP.	47UF 25V CCEA1EH470T

NOTE : *nsp* PART IS LISTED FOR REFERENCE ONLY, MARANTZ WILL NOT SUPPLY THESE PARTS.

P.W.B. NAME	POS. NO.	VERS. COLOR	PART NO. (FOR EUR)	PART NO. (MZ)	PART NAME	DESCRIPTION
INPUT	C920		nsp	00MOA47602520	ELECT CAP.	47UF 25V CCEA1EH470T
INPUT	C921		nsp	00MOA10702520	ELECT CAP.	100UF 25V CCEA1EH101T
INPUT	C922		nsp	00MOA10702520	ELECT CAP.	100UF 25V CCEA1EH101T
INPUT	C923		nsp	00MOA47602520	ELECT CAP.	47UF 25V CCEA1EH470T
INPUT	C926		nsp	00MOA22605020	ELECT CAP.	22UF 25V CCEA1EH220T
INPUT	C927		nsp	00MOA47602520	ELECT CAP.	47UF 25V CCEA1EH470T
INPUT	C928		nsp	nsp	CER. CAP.	0.043UF 50V Z CCFT1H473ZF
INPUT	C929		nsp	nsp	CER. CAP.	0.022UF 50V Z HCBS1H223ZFT
INPUT	CN12		nsp	nsp	CONN.	STRAIGHT 4PIN CJP04GA01ZY
INPUT	CN33		nsp	nsp	CONN.	00906-0027 4P STRAIGHT CJP04GA19ZY
INPUT	CN35		nsp	nsp	CONN.	00906-0027 4P STRAIGHT CJP04GA19ZY
INPUT	CN37		nsp	nsp	CONN.	STRAIGHT 2PIN CJP02GA01ZY
INPUT	CN38		nsp	nsp	CONN.	STRAIGHT 2PIN CJP02GA01ZY
INPUT	CN55		nsp	nsp	CONN.	STRAIGHT 2PIN CJP02GA01ZY
INPUT	CN90		nsp	nsp	CONN.	3P WAFER CJP03GA90ZY
INPUT	CN92		nsp	nsp	CONN.	STRAIGHT 4PIN CJP04GA01ZY
INPUT	CN95		nsp	nsp	CONN.	10P STRAIGHT CJP10GA19ZY
INPUT	D251		nsp	00MHD20015210	DIODE	1SS133T-77 CVD1SS133MT
INPUT	D252		nsp	00MHD20015210	DIODE	1SS133T-77 CVD1SS133MT
INPUT	D301		nsp	00MHD20015210	DIODE	1SS133T-77 CVD1SS133MT
INPUT	D302		nsp	00MHD20015210	DIODE	1SS133T-77 CVD1SS133MT
INPUT	D303		nsp	00MHD20015210	DIODE	1SS133T-77 CVD1SS133MT
INPUT	D304		nsp	00MHD20015210	DIODE	1SS133T-77 CVD1SS133MT
INPUT	D305		nsp	00MHD20015210	DIODE	1SS133T-77 CVD1SS133MT
INPUT	D306		nsp	00MHD20015210	DIODE	1SS133T-77 CVD1SS133MT
INPUT	D307		nsp	00MHD20015210	DIODE	1SS133T-77 CVD1SS133MT
INPUT	D308		nsp	00MHD20015210	DIODE	1SS133T-77 CVD1SS133MT
INPUT	D373		nsp	00MHD20015210	DIODE	1SS133T-77 CVD1SS133MT
INPUT	D374		nsp	00MHD20015210	DIODE	1SS133T-77 CVD1SS133MT
INPUT	D383		nsp	00MHD20015210	DIODE	1SS133T-77 CVD1SS133MT
INPUT	D388		nsp	00MHD20015210	DIODE	1SS133T-77 CVD1SS133MT
INPUT	D391		nsp	00MHD20015210	DIODE	1SS133T-77 CVD1SS133MT
INPUT	D392		nsp	00MHD20015210	DIODE	1SS133T-77 CVD1SS133MT
INPUT	⚠ D901		90M-HE200330R	90M-HE200330R	DIODE	! BU804F HVDKB804F
INPUT	⚠ D911		00MHD20055100	00MHD20055100	DIODE	! SHOTTKY 11EQS10 1A 100V CVD11EQS10GT
INPUT	⚠ D912		00MHD20055100	00MHD20055100	DIODE	! SHOTTKY 11EQS10 1A 100V CVD11EQS10GT
INPUT	⚠ D913		00MHD20055100	00MHD20055100	DIODE	! SHOTTKY 11EQS10 1A 100V CVD11EQS10GT
INPUT	⚠ D914		00MHD20055100	00MHD20055100	DIODE	! SHOTTKY 11EQS10 1A 100V CVD11EQS10GT
INPUT	D915		nsp	00MHD20015210	DIODE	1SS133T-77 CVD1SS133MT
INPUT	D921		90M-HD302480R	90M-HD302480R	ZENER DIODE	ZJ15B 1/2W CVDZJ15BT
INPUT	D922		nsp	00MHD20015210	DIODE	1SS133T-77 CVD1SS133MT
INPUT	D923		nsp	00MHD20015210	DIODE	1SS133T-77 CVD1SS133MT
INPUT	D924		nsp	00MHD20015210	DIODE	1SS133T-77 CVD1SS133MT
INPUT	D925		90M-HD302490R	90M-HD302490R	ZENER DIODE	ZJ6.2B 1/2W CVDZJ6.2BT
INPUT	ET01		nsp	nsp	TERMINAL	EARTH PLATE CNE75
INPUT	GND1		nsp	nsp	TERMINAL	MET37-0002 HJT1A025
INPUT	IC11		00MHC10102090	00MHC10102090	IC	NJM2068MD-TE1 HVINJM2068MDTE1
INPUT	IC21		00MHC10309030	00MHC10309030	IC	LC78212 HVILC78212
INPUT	IC22		00MHC10309030	00MHC10309030	IC	LC78212 HVILC78212
INPUT	IC23		90M-HC109460R	90M-HC109460R	IC	NJM2114M HVINJM2114M
INPUT	⚠ IC93		90M-HC300480R	90M-HC300480R	IC	! KA7815-ABTU HVIMC7815C
INPUT	⚠ IC94		90M-HC300490R	90M-HC300490R	IC	! KA7915-ABTU HVIMC7915C
INPUT	⚠ IC95		90M-HC300500R	90M-HC300500R	IC	! KA7805-ABTU HVIMC7805C
INPUT	J101		nsp	nsp	CORD	SN95/PB5 0.6 C3A206
INPUT	J102		nsp	nsp	CORD	SN95/PB5 0.6 C3A206
INPUT	J103		nsp	nsp	CORD	SN95/PB5 0.6 C3A206
INPUT	J104		nsp	nsp	CORD	SN95/PB5 0.6 C3A206
INPUT	J105		nsp	nsp	CORD	SN95/PB5 0.6 C3A206
INPUT	J106		nsp	nsp	CORD	SN95/PB5 0.6 C3A206
INPUT	J107		nsp	nsp	CORD	SN95/PB5 0.6 C3A206
INPUT	J108		nsp	nsp	CORD	SN95/PB5 0.6 C3A206
INPUT	J110		nsp	nsp	CORD	SN95/PB5 0.6 C3A206
INPUT	J111		nsp	nsp	CORD	SN95/PB5 0.6 C3A206
INPUT	J112		nsp	nsp	CORD	SN95/PB5 0.6 C3A206
INPUT	J113		nsp	nsp	CORD	SN95/PB5 0.6 C3A206
INPUT	J114		nsp	nsp	CORD	SN95/PB5 0.6 C3A206
INPUT	J115		nsp	nsp	CORD	SN95/PB5 0.6 C3A206

NOTE : "nsp" PART IS LISTED FOR REFERENCE ONLY, MARANTZ WILL NOT SUPPLY THESE PARTS.

P.W.B. NAME	POS. NO.	VERS. COLOR	PART NO. (FOR EUR)	PART NO. (MZ)	PART NAME	DESCRIPTION
INPUT	J116		nsp	nsp	CORD	SN95/PB5 0.6 C3A206
INPUT	J117		nsp	nsp	CORD	SN95/PB5 0.6 C3A206
INPUT	J118		nsp	nsp	CORD	SN95/PB5 0.6 C3A206
INPUT	J119		nsp	nsp	CORD	SN95/PB5 0.6 C3A206
INPUT	J120		nsp	nsp	CORD	SN95/PB5 0.6 C3A206
INPUT	J121		nsp	nsp	CORD	SN95/PB5 0.6 C3A206
INPUT	J124		nsp	nsp	CORD	SN95/PB5 0.6 C3A206
INPUT	J202		nsp	nsp	CORD	SN95/PB5 0.6 C3A206
INPUT	J203		nsp	nsp	CORD	SN95/PB5 0.6 C3A206
INPUT	J204		nsp	nsp	CORD	SN95/PB5 0.6 C3A206
INPUT	J205		nsp	nsp	CORD	SN95/PB5 0.6 C3A206
INPUT	J208		nsp	nsp	CORD	SN95/PB5 0.6 C3A206
INPUT	J209		nsp	nsp	CORD	SN95/PB5 0.6 C3A206
INPUT	J212		nsp	nsp	CORD	SN95/PB5 0.6 C3A206
INPUT	J213		nsp	nsp	CORD	SN95/PB5 0.6 C3A206
INPUT	J216		nsp	nsp	CORD	SN95/PB5 0.6 C3A206
INPUT	J217		nsp	nsp	CORD	SN95/PB5 0.6 C3A206
INPUT	J219		nsp	nsp	CORD	SN95/PB5 0.6 C3A206
INPUT	J220		nsp	nsp	CORD	SN95/PB5 0.6 C3A206
INPUT	J301		nsp	nsp	CORD	SN95/PB5 0.6 C3A206
INPUT	J302		nsp	nsp	CORD	SN95/PB5 0.6 C3A206
INPUT	J303		nsp	nsp	CORD	SN95/PB5 0.6 C3A206
INPUT	J304		nsp	nsp	CORD	SN95/PB5 0.6 C3A206
INPUT	J306		nsp	nsp	CORD	SN95/PB5 0.6 C3A206
INPUT	J307		nsp	nsp	CORD	SN95/PB5 0.6 C3A206
INPUT	J308		nsp	nsp	CORD	SN95/PB5 0.6 C3A206
INPUT	J309		nsp	nsp	CORD	SN95/PB5 0.6 C3A206
INPUT	J310		nsp	nsp	CORD	SN95/PB5 0.6 C3A206
INPUT	J311		nsp	nsp	CORD	SN95/PB5 0.6 C3A206
INPUT	J312		nsp	nsp	CORD	SN95/PB5 0.6 C3A206
INPUT	J313		nsp	nsp	CORD	SN95/PB5 0.6 C3A206
INPUT	J314		nsp	nsp	CORD	SN95/PB5 0.6 C3A206
INPUT	J315		nsp	nsp	CORD	SN95/PB5 0.6 C3A206
INPUT	J316		nsp	nsp	CORD	SN95/PB5 0.6 C3A206
INPUT	J318		nsp	nsp	CORD	SN95/PB5 0.6 C3A206
INPUT	J319		nsp	nsp	CORD	SN95/PB5 0.6 C3A206
INPUT	J321		nsp	nsp	CORD	SN95/PB5 0.6 C3A206
INPUT	J322		nsp	nsp	CORD	SN95/PB5 0.6 C3A206
INPUT	J323		nsp	nsp	CORD	SN95/PB5 0.6 C3A206
INPUT	J324		nsp	nsp	CORD	SN95/PB5 0.6 C3A206
INPUT	J325		nsp	nsp	CORD	SN95/PB5 0.6 C3A206
INPUT	J327		nsp	nsp	CORD	SN95/PB5 0.6 C3A206
INPUT	J330		nsp	nsp	CORD	SN95/PB5 0.6 C3A206
INPUT	J331		nsp	nsp	CORD	SN95/PB5 0.6 C3A206
INPUT	J332		nsp	nsp	CORD	SN95/PB5 0.6 C3A206
INPUT	J402		nsp	nsp	CORD	SN95/PB5 0.6 C3A206
INPUT	J403		nsp	nsp	CORD	SN95/PB5 0.6 C3A206
INPUT	J404		nsp	nsp	CORD	SN95/PB5 0.6 C3A206
INPUT	J405		nsp	nsp	CORD	SN95/PB5 0.6 C3A206
INPUT	J406		nsp	nsp	CORD	SN95/PB5 0.6 C3A206
INPUT	J407		nsp	nsp	CORD	SN95/PB5 0.6 C3A206
INPUT	J408		nsp	nsp	CORD	SN95/PB5 0.6 C3A206
INPUT	J410		nsp	nsp	CORD	SN95/PB5 0.6 C3A206
INPUT	J411		nsp	nsp	CORD	SN95/PB5 0.6 C3A206
INPUT	J412		nsp	nsp	CORD	SN95/PB5 0.6 C3A206
INPUT	J414		nsp	nsp	CORD	SN95/PB5 0.6 C3A206
INPUT	J415		nsp	nsp	CORD	SN95/PB5 0.6 C3A206
INPUT	J416		nsp	nsp	CORD	SN95/PB5 0.6 C3A206
INPUT	J417		nsp	nsp	CORD	SN95/PB5 0.6 C3A206
INPUT	J418		nsp	nsp	CORD	SN95/PB5 0.6 C3A206
INPUT	J419		nsp	nsp	CORD	SN95/PB5 0.6 C3A206
INPUT	J501		nsp	nsp	CORD	SN95/PB5 0.6 C3A206
INPUT	J502		nsp	nsp	CORD	SN95/PB5 0.6 C3A206
INPUT	J503		nsp	nsp	CORD	SN95/PB5 0.6 C3A206
INPUT	J504		nsp	nsp	CORD	SN95/PB5 0.6 C3A206
INPUT	J505		nsp	nsp	CORD	SN95/PB5 0.6 C3A206
INPUT	J506		nsp	nsp	CORD	SN95/PB5 0.6 C3A206

NOTE : "nsp" PART IS LISTED FOR REFERENCE ONLY, MARANTZ WILL NOT SUPPLY THESE PARTS.

P.W.B. NAME	POS. NO.	VERS. COLOR	PART NO. (FOR EUR)	PART NO. (MZ)	PART NAME	DESCRIPTION
INPUT	J507		nsp	nsp	CORD	SN95/PB5 0.6 C3A206
INPUT	J508		nsp	nsp	CORD	SN95/PB5 0.6 C3A206
INPUT	J509		nsp	nsp	CORD	SN95/PB5 0.6 C3A206
INPUT	J510		nsp	nsp	CORD	SN95/PB5 0.6 C3A206
INPUT	J511		nsp	nsp	CORD	SN95/PB5 0.6 C3A206
INPUT	J512		nsp	nsp	CORD	SN95/PB5 0.6 C3A206
INPUT	J513		nsp	nsp	CORD	SN95/PB5 0.6 C3A206
INPUT	J514		nsp	nsp	CORD	SN95/PB5 0.6 C3A206
INPUT	J515		nsp	nsp	CORD	SN95/PB5 0.6 C3A206
INPUT	J516		nsp	nsp	CORD	SN95/PB5 0.6 C3A206
INPUT	J517		nsp	nsp	CORD	SN95/PB5 0.6 C3A206
INPUT	J518		nsp	nsp	CORD	SN95/PB5 0.6 C3A206
INPUT	J519		nsp	nsp	CORD	SN95/PB5 0.6 C3A206
INPUT	J520		nsp	nsp	CORD	SN95/PB5 0.6 C3A206
INPUT	J521		nsp	nsp	CORD	SN95/PB5 0.6 C3A206
INPUT	J522		nsp	nsp	CORD	SN95/PB5 0.6 C3A206
INPUT	J523		nsp	nsp	CORD	SN95/PB5 0.6 C3A206
INPUT	J524		nsp	nsp	CORD	SN95/PB5 0.6 C3A206
INPUT	J525		nsp	nsp	CORD	SN95/PB5 0.6 C3A206
INPUT	J526		nsp	nsp	CORD	SN95/PB5 0.6 C3A206
INPUT	J527		nsp	nsp	CORD	SN95/PB5 0.6 C3A206
INPUT	J601		nsp	nsp	CORD	SN95/PB5 0.6 C3A206
INPUT	J602		nsp	nsp	CORD	SN95/PB5 0.6 C3A206
INPUT	J603		nsp	nsp	CORD	SN95/PB5 0.6 C3A206
INPUT	J604		nsp	nsp	CORD	SN95/PB5 0.6 C3A206
INPUT	J605		nsp	nsp	CORD	SN95/PB5 0.6 C3A206
INPUT	J606		nsp	nsp	CORD	SN95/PB5 0.6 C3A206
INPUT	J607		nsp	nsp	CORD	SN95/PB5 0.6 C3A206
INPUT	J608		nsp	nsp	CORD	SN95/PB5 0.6 C3A206
INPUT	J609		nsp	nsp	CORD	SN95/PB5 0.6 C3A206
INPUT	J610		nsp	nsp	CORD	SN95/PB5 0.6 C3A206
INPUT	J611		nsp	nsp	CORD	SN95/PB5 0.6 C3A206
INPUT	J612		nsp	nsp	CORD	SN95/PB5 0.6 C3A206
INPUT	J613		nsp	nsp	CORD	SN95/PB5 0.6 C3A206
INPUT	J614		nsp	nsp	CORD	SN95/PB5 0.6 C3A206
INPUT	J615		nsp	nsp	CORD	SN95/PB5 0.6 C3A206
INPUT	J616		nsp	nsp	CORD	SN95/PB5 0.6 C3A206
INPUT	J617		nsp	nsp	CORD	SN95/PB5 0.6 C3A206
INPUT	J618		nsp	nsp	CORD	SN95/PB5 0.6 C3A206
INPUT	J619		nsp	nsp	CORD	SN95/PB5 0.6 C3A206
INPUT	J620		nsp	nsp	CORD	SN95/PB5 0.6 C3A206
INPUT	J701		nsp	nsp	CORD	SN95/PB5 0.6 C3A206
INPUT	J702		nsp	nsp	CORD	SN95/PB5 0.6 C3A206
INPUT	J703		nsp	nsp	CORD	SN95/PB5 0.6 C3A206
INPUT	J704		nsp	nsp	CORD	SN95/PB5 0.6 C3A206
INPUT	J705		nsp	nsp	CORD	SN95/PB5 0.6 C3A206
INPUT	J706		nsp	nsp	CORD	SN95/PB5 0.6 C3A206
INPUT	J707		nsp	nsp	CORD	SN95/PB5 0.6 C3A206
INPUT	J708		nsp	nsp	CORD	SN95/PB5 0.6 C3A206
INPUT	J709		nsp	nsp	CORD	SN95/PB5 0.6 C3A206
INPUT	J710		nsp	nsp	CORD	SN95/PB5 0.6 C3A206
INPUT	J712		nsp	nsp	CORD	SN95/PB5 0.6 C3A206
INPUT	J713		nsp	nsp	CORD	SN95/PB5 0.6 C3A206
INPUT	J714		nsp	nsp	CORD	SN95/PB5 0.6 C3A206
INPUT	J715		nsp	nsp	CORD	SN95/PB5 0.6 C3A206
INPUT	J716		nsp	nsp	CORD	SN95/PB5 0.6 C3A206
INPUT	J801		nsp	nsp	CORD	SN95/PB5 0.6 C3A206
INPUT	J803		nsp	nsp	CORD	SN95/PB5 0.6 C3A206
INPUT	J804		nsp	nsp	CORD	SN95/PB5 0.6 C3A206
INPUT	J806		nsp	nsp	CORD	SN95/PB5 0.6 C3A206
INPUT	J807		nsp	nsp	CORD	SN95/PB5 0.6 C3A206
INPUT	J808		nsp	nsp	CORD	SN95/PB5 0.6 C3A206
INPUT	J901		nsp	nsp	CORD	SN95/PB5 0.6 C3A206
INPUT	J902		nsp	nsp	CORD	SN95/PB5 0.6 C3A206
INPUT	J903		nsp	nsp	CORD	SN95/PB5 0.6 C3A206
INPUT	J904		nsp	nsp	CORD	SN95/PB5 0.6 C3A206
INPUT	J905		nsp	nsp	CORD	SN95/PB5 0.6 C3A206

NOTE : "nsp" PART IS LISTED FOR REFERENCE ONLY, MARANTZ WILL NOT SUPPLY THESE PARTS.

P.W.B. NAME	POS. NO.	VERS. COLOR	PART NO. (FOR EUR)	PART NO. (MZ)	PART NAME	DESCRIPTION
INPUT	JK11		90M-YT003110R	90M-YT003110R	TERMINAL	CINCH 2P (GOLD) AUDIO CJJ4N060Z
INPUT	JK12		90M-YT004520R	90M-YT004520R	TERMINAL	CINCH 4P AUDIO GOLD CJJ4P058Z
INPUT	JK13		90M-YT004520R	90M-YT004520R	TERMINAL	CINCH 4P AUDIO GOLD CJJ4P058Z
INPUT	JK14		90M-YT004520R	90M-YT004520R	TERMINAL	CINCH 4P AUDIO GOLD CJJ4P058Z
INPUT	JK15		90M-YT003110R	90M-YT003110R	TERMINAL	CINCH 2P (GOLD) AUDIO CJJ4N060Z
INPUT	JK31		90M-YT005410R	90M-YT005410R	TERMINAL	SPEAKER 8P CJJ5Q015Z
INPUT	JW11		nsp	nsp	CORD	WIRE ASSY CWEH202080PP
INPUT	L101		nsp	nsp	COIL	COIL TOROIDAL CLU9S004Z
INPUT	L102		nsp	nsp	COIL	COIL TOROIDAL CLU9S004Z
INPUT	L363		90M-LC107310R	90M-LC107310R	COIL	0.5UH K CLEY0R5KAK
INPUT	L364		90M-LC107310R	90M-LC107310R	COIL	0.5UH K CLEY0R5KAK
INPUT	Q281		00MHT805501B0	00MHT805501B0	TRS.	KTC2874B HVTKTC2874BT
INPUT	Q282		00MHT805501B0	00MHT805501B0	TRS.	KTC2874B HVTKTC2874BT
INPUT	Q301		00MHT600121A0	00MHT600121A0	TRS.	KTA1268GR HVTKTA1268GRT
INPUT	Q302		00MHT600121A0	00MHT600121A0	TRS.	KTA1268GR HVTKTA1268GRT
INPUT	Q303		00MHT600121A0	00MHT600121A0	TRS.	KTA1268GR HVTKTA1268GRT
INPUT	Q304		00MHT600121A0	00MHT600121A0	TRS.	KTA1268GR HVTKTA1268GRT
INPUT	Q305		00MHT600121A0	00MHT600121A0	TRS.	KTA1268GR HVTKTA1268GRT
INPUT	Q306		00MHT600121A0	00MHT600121A0	TRS.	KTA1268GR HVTKTA1268GRT
INPUT	Q307		00MHT600121A0	00MHT600121A0	TRS.	KTA1268GR HVTKTA1268GRT
INPUT	Q308		00MHT600121A0	00MHT600121A0	TRS.	KTA1268GR HVTKTA1268GRT
INPUT	Q309		00MHT800931A0	00MHT800931A0	TRS.	KTC3200GR HVTKTC3200GRT
INPUT	Q310		00MHT800931A0	00MHT800931A0	TRS.	KTC3200GR HVTKTC3200GRT
INPUT	Q311		00MHT800931A0	00MHT800931A0	TRS.	KTC3200GR HVTKTC3200GRT
INPUT	Q312		00MHT800931A0	00MHT800931A0	TRS.	KTC3200GR HVTKTC3200GRT
INPUT	Q325		90M-HT600030R	90M-HT600030R	TRS.	KTA1024Y HVTKTA1024YT
INPUT	Q326		90M-HT600030R	90M-HT600030R	TRS.	KTA1024Y HVTKTA1024YT
INPUT	Q335		00MHT800941B0	00MHT800941B0	TRS.	KTC3206Y HVTKTC3206YAT
INPUT	Q336		00MHT800941B0	00MHT800941B0	TRS.	KTC3206Y HVTKTC3206YAT
INPUT	Q345		00MHT334191Y0	00MHT334191Y0	TRS.	2SC3419Y HVT2SC3419Y
INPUT	Q346		00MHT334191Y0	00MHT334191Y0	TRS.	2SC3419Y HVT2SC3419Y
INPUT	Q347		00MHT800941B0	00MHT800941B0	TRS.	KTC3206Y HVTKTC3206YAT
INPUT	Q348		00MHT800941B0	00MHT800941B0	TRS.	KTC3206Y HVTKTC3206YAT
INPUT	Q349		90M-HT600030R	90M-HT600030R	TRS.	KTA1024Y HVTKTA1024YT
INPUT	Q350		90M-HT600030R	90M-HT600030R	TRS.	KTA1024Y HVTKTA1024YT
INPUT	Q351		90M-HT300940R	90M-HT300940R	TRS.	2SC4883A HVT2SC4883A
INPUT	Q352		90M-HT300940R	90M-HT300940R	TRS.	2SC4883A HVT2SC4883A
INPUT	Q353		90M-HT100690R	90M-HT100690R	TRS.	2SA1859A HVT2SA1859A
INPUT	Q354		90M-HT100690R	90M-HT100690R	TRS.	2SA1859A HVT2SA1859A
INPUT	⚠ Q355		00MHT344683A0	00MHT344683A0	TRS.	! 2SC4468P HVT2SC4468
INPUT	⚠ Q356		00MHT344683A0	00MHT344683A0	TRS.	! 2SC4468P HVT2SC4468
INPUT	⚠ Q357		00MHT116953A0	00MHT116953A0	TRS.	! 2SA1695P HVT2SA1695
INPUT	⚠ Q358		00MHT116953A0	00MHT116953A0	TRS.	! 2SA1695P HVT2SA1695
INPUT	Q371		00MHT327851H0	00MHT327851H0	TRS.	KSC2785Y HVTKSC2785YT
INPUT	Q372		00MHT327851H0	00MHT327851H0	TRS.	KSC2785Y HVTKSC2785YT
INPUT	Q379		90M-HT100390R	90M-HT100390R	TRS.	KSA1175Y HVTKSA1175YT
INPUT	Q385		00MHT327851H0	00MHT327851H0	TRS.	KSC2785Y HVTKSC2785YT
INPUT	Q386		90M-HT100390R	90M-HT100390R	TRS.	KSA1175Y HVTKSA1175YT
INPUT	Q391		90M-HT100390R	90M-HT100390R	TRS.	KSA1175Y HVTKSA1175YT
INPUT	Q392		00MHT327851H0	00MHT327851H0	TRS.	KSC2785Y HVTKSC2785YT
INPUT	Q393		00MHT327851H0	00MHT327851H0	TRS.	KSC2785Y HVTKSC2785YT
INPUT	Q394		00MHT327851H0	00MHT327851H0	TRS.	KSC2785Y HVTKSC2785YT
INPUT	⚠ Q921		90M-HT800040R	90M-HT800040R	TRS.	! KSC2316Y HVTKSC2316YT
INPUT	Q922		90M-HT800050R	90M-HT800050R	TRS.	KTC3198Y HVTKTC3198YT
INPUT	Q923		90M-HT800050R	90M-HT800050R	TRS.	KTC3198Y HVTKTC3198YT
INPUT	Q924		90M-BA001450R	90M-BA001450R	TRS.	KRA107M HVTKRA107MT
INPUT	R101		nsp	nsp	RES.	330 OHM 1/5W J CRD20TJ331T
INPUT	R102		nsp	nsp	RES.	330 OHM 1/5W J CRD20TJ331T
INPUT	R103		nsp	nsp	RES.	100K OHM 1/5W J CRD20TJ104T
INPUT	R104		nsp	nsp	RES.	100K OHM 1/5W J CRD20TJ104T
INPUT	R105		nsp	nsp	RES.	100K OHM 1/5W J CRD20TJ104T
INPUT	R106		nsp	nsp	RES.	100K OHM 1/5W J CRD20TJ104T
INPUT	R109		nsp	nsp	RES.	100 OHM 1/5W J CRD20TJ101T
INPUT	R110		nsp	nsp	RES.	100 OHM 1/5W J CRD20TJ101T
INPUT	R111		nsp	nsp	RES.	100K OHM 1/5W J CRD20TJ104T
INPUT	R112		nsp	nsp	RES.	100K OHM 1/5W J CRD20TJ104T
INPUT	R113		nsp	nsp	RES.	5.6K OHM 1/5W J CRD20TJ562T

NOTE : *nsp* PART IS LISTED FOR REFERENCE ONLY, MARANTZ WILL NOT SUPPLY THESE PARTS.

P.W.B. NAME	POS. NO.	VERS. COLOR	PART NO. (FOR EUR)	PART NO. (MZ)	PART NAME	DESCRIPTION
INPUT	R114		nsp	nsp	RES.	5.6K OHM 1/5W J CRD20TJ562T
INPUT	R115		nsp	nsp	RES.	100 OHM 1/5W J CRD20TJ101T
INPUT	R116		nsp	nsp	RES.	100 OHM 1/5W J CRD20TJ101T
INPUT	R117		nsp	nsp	RES.	220 OHM 1/5W J CRD20TJ221T
INPUT	R118		nsp	nsp	RES.	220 OHM 1/5W J CRD20TJ221T
INPUT	R119		nsp	nsp	RES.	47K OHM 1/5W J CRD20TJ473T
INPUT	R120		nsp	nsp	RES.	47K OHM 1/5W J CRD20TJ473T
INPUT	R121		nsp	nsp	RES.	100 OHM 1/5W J CRD20TJ101T
INPUT	R122		nsp	nsp	RES.	100 OHM 1/5W J CRD20TJ101T
INPUT	R131		nsp	nsp	RES.	330 OHM 1/5W J CRD20TJ331T
INPUT	R132		nsp	nsp	RES.	330 OHM 1/5W J CRD20TJ331T
INPUT	R201		nsp	nsp	RES.	220 OHM 1/5W J CRD20TJ221T
INPUT	R202		nsp	nsp	RES.	220 OHM 1/5W J CRD20TJ221T
INPUT	R203		nsp	nsp	RES.	220 OHM 1/5W J CRD20TJ221T
INPUT	R204		nsp	nsp	RES.	220 OHM 1/5W J CRD20TJ221T
INPUT	R205		nsp	nsp	RES.	220 OHM 1/5W J CRD20TJ221T
INPUT	R206		nsp	nsp	RES.	220 OHM 1/5W J CRD20TJ221T
INPUT	R207		nsp	nsp	RES.	220 OHM 1/5W J CRD20TJ221T
INPUT	R208		nsp	nsp	RES.	220 OHM 1/5W J CRD20TJ221T
INPUT	R209		nsp	nsp	RES.	10 OHM 1/5W J CRD20TJ100T
INPUT	R210		nsp	nsp	RES.	10 OHM 1/5W J CRD20TJ100T
INPUT	R211		nsp	nsp	RES.	220 OHM 1/5W J CRD20TJ221T
INPUT	R212		nsp	nsp	RES.	220 OHM 1/5W J CRD20TJ221T
INPUT	R213		nsp	nsp	RES.	10 OHM 1/5W J CRD20TJ100T
INPUT	R214		nsp	nsp	RES.	10 OHM 1/5W J CRD20TJ100T
INPUT	R221		nsp	nsp	RES.	1M OHM 1/5W J CRD20TJ105T
INPUT	R222		nsp	nsp	RES.	1M OHM 1/5W J CRD20TJ105T
INPUT	R223		nsp	nsp	RES.	1M OHM 1/5W J CRD20TJ105T
INPUT	R224		nsp	nsp	RES.	1M OHM 1/5W J CRD20TJ105T
INPUT	R225		nsp	nsp	RES.	1M OHM 1/5W J CRD20TJ105T
INPUT	R226		nsp	nsp	RES.	1M OHM 1/5W J CRD20TJ105T
INPUT	R227		nsp	nsp	RES.	1M OHM 1/5W J CRD20TJ105T
INPUT	R228		nsp	nsp	RES.	1M OHM 1/5W J CRD20TJ105T
INPUT	R229		nsp	nsp	RES.	1M OHM 1/5W J CRD20TJ105T
INPUT	R230		nsp	nsp	RES.	1M OHM 1/5W J CRD20TJ105T
INPUT	R231		nsp	nsp	RES.	1M OHM 1/5W J CRD20TJ105T
INPUT	R232		nsp	nsp	RES.	1M OHM 1/5W J CRD20TJ105T
INPUT	R233		nsp	nsp	RES.	1M OHM 1/5W J CRD20TJ105T
INPUT	R234		nsp	nsp	RES.	1M OHM 1/5W J CRD20TJ105T
INPUT	R235		nsp	nsp	RES.	1K OHM 1/5W J CRD20TJ102T
INPUT	R236		nsp	nsp	RES.	1K OHM 1/5W J CRD20TJ102T
INPUT	R237		nsp	nsp	RES.	1K OHM 1/5W J CRD20TJ102T
INPUT	R238		nsp	nsp	RES.	1K OHM 1/5W J CRD20TJ102T
INPUT	R251		nsp	nsp	RES.	120 OHM 1/5W J CRD20TJ121T
INPUT	R252		nsp	nsp	RES.	120 OHM 1/5W J CRD20TJ121T
INPUT	R253		nsp	nsp	RES.	120 OHM 1/5W J CRD20TJ121T
INPUT	R254		nsp	nsp	RES.	120 OHM 1/5W J CRD20TJ121T
INPUT	R255		nsp	nsp	RES.	10K OHM 1/5W J CRD20TJ103T
INPUT	R256		nsp	nsp	RES.	10K OHM 1/5W J CRD20TJ103T
INPUT	R258		nsp	nsp	RES.	10K OHM 1/5W J CRD20TJ103T
INPUT	R260		nsp	nsp	RES.	56K OHM 1/5W J CRD20TJ563T
INPUT	R261		nsp	nsp	RES.	56K OHM 1/5W J CRD20TJ563T
INPUT	R264		nsp	nsp	RES.	27K OHM 1/5W J CRD20TJ273T
INPUT	R265		nsp	nsp	RES.	27K OHM 1/5W J CRD20TJ273T
INPUT	R266		nsp	nsp	RES.	330 OHM 1/5W J CRD20TJ331T
INPUT	R267		nsp	nsp	RES.	330 OHM 1/5W J CRD20TJ331T
INPUT	R269		nsp	nsp	RES.	100 OHM 1/5W J CRD20TJ101T
INPUT	R270		nsp	nsp	RES.	100 OHM 1/5W J CRD20TJ101T
INPUT	R273		nsp	nsp	RES.	120 OHM 1/5W J CRD20TJ121T
INPUT	R274		nsp	nsp	RES.	120 OHM 1/5W J CRD20TJ121T
INPUT	R275		nsp	nsp	RES.	120 OHM 1/5W J CRD20TJ121T
INPUT	R280		nsp	nsp	RES.	10K OHM 1/5W J CRD20TJ103T
INPUT	R281		nsp	nsp	RES.	470K OHM 1/5W J CRD20TJ474T
INPUT	R282		nsp	nsp	RES.	470K OHM 1/5W J CRD20TJ474T
INPUT	R283		nsp	nsp	RES.	1M OHM 1/5W J CRD20TJ105T
INPUT	R284		nsp	nsp	RES.	100K OHM 1/5W J CRD20TJ104T
INPUT	R285		nsp	nsp	RES.	100K OHM 1/5W J CRD20TJ104T

NOTE : "nsp" PART IS LISTED FOR REFERENCE ONLY, MARANTZ WILL NOT SUPPLY THESE PARTS.

P.W.B. NAME	POS. NO.	VERS. COLOR	PART NO. (FOR EUR)	PART NO. (MZ)	PART NAME	DESCRIPTION
INPUT	R286		nsp	nsp	RES.	470 OHM 1/5W J CRD20TJ471T
INPUT	R287		nsp	nsp	RES.	470 OHM 1/5W J CRD20TJ471T
INPUT	R288		nsp	nsp	RES.	680 OHM 1/5W J CRD20TJ681T
INPUT	R289		nsp	nsp	RES.	680 OHM 1/5W J CRD20TJ681T
INPUT	R290		nsp	nsp	RES.	5.6K OHM 1/5W J CRD20TJ562T
INPUT	R291		nsp	nsp	RES.	5.6K OHM 1/5W J CRD20TJ562T
INPUT	R292		nsp	nsp	RES.	5.6K OHM 1/5W J CRD20TJ562T
INPUT	R293		nsp	nsp	RES.	5.6K OHM 1/5W J CRD20TJ562T
INPUT	R294		nsp	nsp	RES.	1.2K OHM 1/5W J CRD20TJ122T
INPUT	R295		nsp	nsp	RES.	1.2K OHM 1/5W J CRD20TJ122T
INPUT	R296		nsp	nsp	RES.	1.2K OHM 1/5W J CRD20TJ122T
INPUT	R297		nsp	nsp	RES.	1.2K OHM 1/5W J CRD20TJ122T
INPUT	R298		nsp	nsp	RES.	270 OHM 1/5W J CRD20TJ271T
INPUT	R299		nsp	nsp	RES.	270 OHM 1/5W J CRD20TJ271T
INPUT	R300		nsp	nsp	RES.	33K OHM 1/5W J CRD20TJ333T
INPUT	R301		nsp	nsp	RES.	33K OHM 1/5W J CRD20TJ333T
INPUT	R302		nsp	nsp	RES.	4.7K OHM 1/5W J CRD20TJ472T
INPUT	R303		nsp	nsp	RES.	4.7K OHM 1/5W J CRD20TJ472T
INPUT	R304		nsp	nsp	RES.	300 OHM 1/5W J CRD20TJ301T
INPUT	R305		nsp	nsp	RES.	300 OHM 1/5W J CRD20TJ301T
INPUT	R306		nsp	nsp	RES.	100K OHM 1/5W J CRD20TJ104T
INPUT	R307		nsp	nsp	RES.	100K OHM 1/5W J CRD20TJ104T
INPUT	R308		nsp	nsp	RES.	470 OHM 1/5W J CRD20TJ471T
INPUT	R309		nsp	nsp	RES.	470 OHM 1/5W J CRD20TJ471T
INPUT	R310		nsp	nsp	RES.	1K OHM 1/5W J CRD20TJ102T
INPUT	R311		nsp	nsp	RES.	1K OHM 1/5W J CRD20TJ102T
INPUT	R312		nsp	nsp	RES.	470 OHM 1/5W J CRD20TJ471T
INPUT	R313		nsp	nsp	RES.	470 OHM 1/5W J CRD20TJ471T
INPUT	R314		nsp	nsp	RES.	470 OHM 1/5W J CRD20TJ471T
INPUT	R315		nsp	nsp	RES.	470 OHM 1/5W J CRD20TJ471T
INPUT	R316		nsp	nsp	RES.	100 OHM 1/5W J CRD20TJ101T
INPUT	R317		nsp	nsp	RES.	100 OHM 1/5W J CRD20TJ101T
INPUT	R318		nsp	nsp	RES.	100 OHM 1/5W J CRD20TJ101T
INPUT	R319		nsp	nsp	RES.	100 OHM 1/5W J CRD20TJ101T
INPUT	R320		nsp	nsp	RES.	470 OHM 1/5W J CRD20TJ471T
INPUT	R321		nsp	nsp	RES.	470 OHM 1/5W J CRD20TJ471T
INPUT	R322		nsp	nsp	RES.	1M OHM 1/5W J CRD20TJ105T
INPUT	R323		nsp	nsp	RES.	1M OHM 1/5W J CRD20TJ105T
INPUT	R324		nsp	nsp	RES.	1M OHM 1/5W J CRD20TJ105T
INPUT	R325		nsp	nsp	RES.	1M OHM 1/5W J CRD20TJ105T
INPUT	R327		nsp	nsp	RES.	100 OHM 1/5W J CRD20TJ101T
INPUT	R328		nsp	nsp	RES.	100 OHM 1/5W J CRD20TJ101T
INPUT	R331		nsp	nsp	RES.	100 OHM 1/5W J CRD20TJ101T
INPUT	R332		nsp	nsp	RES.	100 OHM 1/5W J CRD20TJ101T
INPUT	R333		nsp	nsp	RES.	820 OHM 1/5W J CRD20TJ821T
INPUT	R334		nsp	nsp	RES.	820 OHM 1/5W J CRD20TJ821T
INPUT	R335		nsp	nsp	RES.	100 OHM 1/5W J CRD20TJ101T
INPUT	R336		nsp	nsp	RES.	100 OHM 1/5W J CRD20TJ101T
INPUT	R337		nsp	nsp	RES.	10 OHM 1/4W KRD25FJ100T
INPUT	R338		nsp	nsp	RES.	10 OHM 1/4W KRD25FJ100T
INPUT	R339		nsp	nsp	RES.	10 OHM 1/4W KRD25FJ100T
INPUT	R340		nsp	nsp	RES.	10 OHM 1/4W KRD25FJ100T
INPUT	R341		nsp	nsp	RES.	1K OHM 1/5W J CRD20TJ102T
INPUT	R342		nsp	nsp	RES.	1K OHM 1/5W J CRD20TJ102T
INPUT	R343		nsp	nsp	RES.	3.3K OHM 1/5W J CRD20TJ332T
INPUT	R344		nsp	nsp	RES.	3.3K OHM 1/5W J CRD20TJ332T
INPUT	R345		nsp	nsp	RES.	100 OHM 1/5W J CRD20TJ101T
INPUT	R346		nsp	nsp	RES.	100 OHM 1/5W J CRD20TJ101T
INPUT	R347		nsp	nsp	RES.	100 OHM 1/5W J CRD20TJ101T
INPUT	R348		nsp	nsp	RES.	100 OHM 1/5W J CRD20TJ101T
INPUT	R349		nsp	nsp	RES.	47 OHM 1/5W J CRD20TJ470T
INPUT	R350		nsp	nsp	RES.	47 OHM 1/5W J CRD20TJ470T
INPUT	R351		nsp	nsp	RES.	47 OHM 1/5W J CRD20TJ470T
INPUT	R352		nsp	nsp	RES.	47 OHM 1/5W J CRD20TJ470T
INPUT	R353		nsp	nsp	RES.	220 OHM 1/4W J CRD25TJ221T
INPUT	R354		nsp	nsp	RES.	220 OHM 1/4W J CRD25TJ221T
INPUT	R355		nsp	nsp	RES.	10 OHM 1/5W J CRD20TJ100T

NOTE : "nsp" PART IS LISTED FOR REFERENCE ONLY, MARANTZ WILL NOT SUPPLY THESE PARTS.

P.W.B. NAME	POS. NO.	VERS. COLOR	PART NO. (FOR EUR)	PART NO. (MZ)	PART NAME	DESCRIPTION
INPUT	R356		nsp	nsp	RES.	10 OHM 1/5W J CRD20TJ100T
INPUT	R357		nsp	nsp	RES.	10 OHM 1/4W J CRD25TJ100T
INPUT	R358		nsp	nsp	RES.	10 OHM 1/5W J CRD20TJ100T
INPUT	R359		90M-G0000005R	90M-G0000005R	RES.	0.22 OHM 5W K CRF5EKR22H
INPUT	R360		90M-G0000005R	90M-G0000005R	RES.	0.22 OHM 5W K CRF5EKR22H
INPUT	R361		90M-G0000005R	90M-G0000005R	RES.	0.22 OHM 5W K CRF5EKR22H
INPUT	R362		90M-G0000005R	90M-G0000005R	RES.	0.22 OHM 5W K CRF5EKR22H
INPUT	R363		nsp	nsp	RES.	10 OHM 1/4W J CRD25TJ100T
INPUT	R364		nsp	nsp	RES.	10 OHM 1/4W J CRD25TJ100T
INPUT	R365		nsp	nsp	RES.	10 OHM 1/4W J CRD25TJ100T
INPUT	R366		nsp	nsp	RES.	10 OHM 1/4W J CRD25TJ100T
INPUT	R367		nsp	nsp	RES.	10 OHM CRG1ANJ100H
INPUT	R368		nsp	nsp	RES.	10 OHM CRG1ANJ100H
INPUT	R371		nsp	nsp	RES.	1K OHM 1/5W J CRD20TJ102T
INPUT	R372		nsp	nsp	RES.	1K OHM 1/5W J CRD20TJ102T
INPUT	R373		nsp	nsp	RES.	22K OHM 1/5W J CRD20TJ223T
INPUT	R374		nsp	nsp	RES.	22K OHM 1/5W J CRD20TJ223T
INPUT	R375		nsp	nsp	RES.	1.5K OHM 1/5W J CRD20TJ152T
INPUT	R376		nsp	nsp	RES.	1.5K OHM 1/5W J CRD20TJ152T
INPUT	R377		nsp	nsp	RES.	22K OHM 1/5W J CRD20TJ223T
INPUT	R378		nsp	nsp	RES.	22K OHM 1/5W J CRD20TJ223T
INPUT	R379		nsp	nsp	RES.	6.8K OHM 1/5W J CRD20TJ682T
INPUT	R381		nsp	nsp	RES.	33K OHM 1/5W J CRD20TJ333T
INPUT	R382		nsp	nsp	RES.	33K OHM 1/5W J CRD20TJ333T
INPUT	R383		nsp	nsp	RES.	22K OHM 1/5W J CRD20TJ223T
INPUT	R385		nsp	nsp	RES.	10K OHM 1/5W J CRD20TJ103T
INPUT	R386		nsp	nsp	RES.	10K OHM 1/5W J CRD20TJ103T
INPUT	R387		nsp	nsp	RES.	10K OHM 1/5W J CRD20TJ103T
INPUT	R388		nsp	nsp	RES.	33K OHM 1/5W J CRD20TJ333T
INPUT	R389		nsp	nsp	RES.	33K OHM 1/5W J CRD20TJ333T
INPUT	R390		nsp	nsp	RES.	100 OHM 1/5W J CRD20TJ101T
INPUT	R391		nsp	nsp	RES.	33K OHM 1/5W J CRD20TJ333T
INPUT	R392		nsp	nsp	RES.	18K OHM 1/5W J CRD20TJ183T
INPUT	R393		nsp	nsp	RES.	10K OHM 1/5W J CRD20TJ103T
INPUT	R394		nsp	nsp	RES.	47K OHM 1/5W J CRD20TJ473T
INPUT	R395		nsp	nsp	RES.	10K OHM 1/5W J CRD20TJ103T
INPUT	R396		nsp	nsp	RES.	47K OHM 1/5W J CRD20TJ473T
INPUT	R397		nsp	nsp	RES.	10K OHM 1/5W J CRD20TJ103T
INPUT	R398		nsp	nsp	RES.	47K OHM 1/5W J CRD20TJ473T
INPUT	R399		nsp	nsp	RES.	100 OHM 1/5W J CRD20TJ101T
INPUT	R400		nsp	nsp	RES.	100 OHM 1/5W J CRD20TJ101T
INPUT	R691		nsp	nsp	RES.	330 OHM 1W CRG1ANJ331H
INPUT	R692		nsp	nsp	RES.	330 OHM 1W CRG1ANJ331H
INPUT	R901		nsp	nsp	RES.	4.7K OHM 1/4W J CRD25TJ472T
INPUT	R905		nsp	nsp	RES.	22K OHM 1/4W J CRD25TJ223T
INPUT	R906		nsp	nsp	RES.	22K OHM 1/4W J CRD25TJ223T
INPUT	⚠ R911		90M-NH000080R	90M-NH000080R	FUSE RES.	! 0.47 OHM 1W J KRQ1AJR47H
INPUT	⚠ R912		90M-NH000080R	90M-NH000080R	FUSE RES.	! 0.47 OHM 1W J KRQ1AJR47H
INPUT	R913		nsp	nsp	RES.	4.7K OHM 1/5W J CRD20TJ472T
INPUT	R914		nsp	nsp	RES.	22K OHM 1/5W J CRD20TJ223T
INPUT	R915		nsp	nsp	RES.	47K OHM 1/5W J CRD20TJ473T
INPUT	R919		nsp	nsp	RES.	22K OHM 1/5W J CRD20TJ223T
INPUT	R920		nsp	nsp	RES.	22K OHM 1/5W J CRD20TJ223T
INPUT	R921		nsp	nsp	RES.	1.2K OHM 1/5W J CRD20TJ122T
INPUT	R922		nsp	nsp	RES.	1K OHM 1/5W J CRD20TJ102T
INPUT	R923		nsp	nsp	RES.	33K OHM 1/5W J CRD20TJ333T
INPUT	R924		nsp	nsp	RES.	22K OHM 1/5W J CRD20TJ223T
INPUT	R925		nsp	nsp	RES.	22K OHM 1/5W J CRD20TJ223T
INPUT	R926		nsp	nsp	RES.	22K OHM 1/5W J CRD20TJ223T
INPUT	R927		nsp	nsp	RES.	10K OHM 1/5W J CRD20TJ103T
INPUT	R928		nsp	nsp	RES.	10K OHM 1/5W J CRD20TJ103T
INPUT	R929		nsp	nsp	RES.	10K OHM 1/5W J CRD20TJ103T
INPUT	RY31		90M-LY000330R	90M-LY000330R	RELAY	OSA-SS-212DM3 HSL4A004ZU
INPUT	RY32		90M-LY000330R	90M-LY000330R	RELAY	OSA-SS-212DM3 HSL4A004ZU
INPUT	RY33		90M-LY000330R	90M-LY000330R	RELAY	OSA-SS-212DM3 HSL4A004ZU
INPUT	VR31		90M-RA001080R	90M-RA001080R	TRIM. RES.	RH0638C-471 HVN1RA471B01T
INPUT	VR32		90M-RA001080R	90M-RA001080R	TRIM. RES.	RH0638C-471 HVN1RA471B01T

NOTE : "nsp" PART IS LISTED FOR REFERENCE ONLY, MARANTZ WILL NOT SUPPLY THESE PARTS.

P.W.B. NAME	POS. NO.	VERS. COLOR	PART NO. (FOR EUR)	PART NO. (MZ)	PART NAME	DESCRIPTION
INPUT	VR33		90M-RA001140R	90M-RA001140R	TRIM. RES.	RH0638C-102 HVN1RA102B01T
INPUT	VR34		90M-RA001140R	90M-RA001140R	TRIM. RES.	RH0638C-102 HVN1RA102B01T
					MASTER VOLUME PWB (CUP11954-2)	
M-VOL.	BN12		nsp	nsp	CORD	WIRE ASSY 2.5MM(04P) SHIELD CWZPM48BN33
M-VOL.	BN53		90M-YJ002920R	90M-YJ002920R	CONN.	6P ANGLE CJP06GB99ZY
M-VOL.	C527		nsp	nsp	CER. CAP.	0.01UF 50V Z HCBS1H103ZFT
M-VOL.	C543		nsp	00MOA106035Z0	ELECT CAP.	10UF 35V ROS HCEA1VR100T
M-VOL.	C544		nsp	00MOA106035Z0	ELECT CAP.	10UF 35V ROS HCEA1VR100T
M-VOL.	C624		nsp	00MOA22801620	ELECT CAP.	2200UF 16V CCEA1CH222E
M-VOL.	CB52		90M-YP100330R	90M-YP100330R	CONN.	7P ANGLE CJP07GF107ZY
M-VOL.	CN56		nsp	nsp	CONN.	STRAIGHT 3PIN CJP03GA19ZY
M-VOL.	D624		nsp	00MHD20015210	DIODE	1SS133T-77 CVD1SS133MT
M-VOL.	J116		nsp	nsp	CORD	SN95/PB5 0.6 C3A206
M-VOL.	J303		nsp	nsp	CORD	SN95/PB5 0.6 C3A206
M-VOL.	J306		nsp	nsp	CORD	SN95/PB5 0.6 C3A206
M-VOL.	J327		nsp	nsp	CORD	SN95/PB5 0.6 C3A206
M-VOL.	J501		nsp	nsp	CORD	SN95/PB5 0.6 C3A206
M-VOL.	J503		nsp	nsp	CORD	SN95/PB5 0.6 C3A206
M-VOL.	J506		nsp	nsp	CORD	SN95/PB5 0.6 C3A206
M-VOL.	J901		nsp	nsp	CORD	SN95/PB5 0.6 C3A206
M-VOL.	J902		nsp	nsp	CORD	SN95/PB5 0.6 C3A206
M-VOL.	JW52		nsp	nsp	CORD	ST710388-5298T CWZPM48JW52
M-VOL.	R527		nsp	nsp	RES.	330 OHM 1/5W J CRD20TJ331T
M-VOL.	R528		nsp	nsp	RES.	330 OHM 1/5W J CRD20TJ331T
M-VOL.	R539		nsp	nsp	RES.	56K OHM 1/5W J CRD20TJ563T
M-VOL.	R540		nsp	nsp	RES.	56K OHM 1/5W J CRD20TJ563T
M-VOL.	R548		nsp	nsp	RES.	330 OHM 1/5W J CRD20TJ331T
M-VOL.	R549		nsp	nsp	RES.	330 OHM 1/5W J CRD20TJ331T
M-VOL.	R621		nsp	nsp	RES.	100 OHM 1/5W J CRD20TJ101T
M-VOL.	VR53		90M-RB000070R	90M-RB000070R	VAR. RES.	VR MOTOR CVV9Y13B503Z
					POWER SW PWB (CUP11954-5)	
P-SW	▲ C901		90M-DK100770R	90M-DK100770R	CER. CAP.	! 0.0047UF 2.5KV KCKDKS472ME
P-SW	JW96		nsp	nsp	CORD	WIRE ASSY CWZPM48JW96
P-SW	▲ SW91		90M-SP001250R	90M-SP001250R	SW	! JPP1197CSA64 KSH1A001ZV
					SPEAKER SW & LOUDNESS PWB (CUP11954-3)	
SPKR	BK62		nsp	nsp	BRACKET	BRACKET PWB CMD1A387
SPKR	BK63		nsp	nsp	BRACKET	BRACKET PWB CMD1A387
SPKR	BN35		nsp	nsp	CORD	WIRE ASSY CWB2B904400EN
SPKR	BN54		90M-YJ002920R	90M-YJ002920R	CONN.	6P ANGLE CJP06GB99ZY
SPKR	C523		nsp	nsp	FILM CAP.	0.1UF 50V J HCQ1H104JZT
SPKR	C524		nsp	nsp	FILM CAP.	0.1UF 50V J HCQ1H104JZT
SPKR	C525		nsp	nsp	FILM CAP.	1000PF 50V J HCQ1H102JZT
SPKR	C526		nsp	nsp	FILM CAP.	1000PF 50V J HCQ1H102JZT
SPKR	J310		nsp	nsp	CORD	SN95/PB5 0.6 C3A206
SPKR	J311		nsp	nsp	CORD	SN95/PB5 0.6 C3A206
SPKR	R523		nsp	nsp	RES.	5.6K OHM 1/5W J CRD20TJ562T
SPKR	R524		nsp	nsp	RES.	5.6K OHM 1/5W J CRD20TJ562T
SPKR	R525		nsp	nsp	RES.	3.3K OHM 1/5W J CRD20TJ332T
SPKR	R526		nsp	nsp	RES.	3.3K OHM 1/5W J CRD20TJ332T
SPKR	SW52		90M-SP001240R	90M-SP001240R	SW	SPUL19X1M071 HSH2B017Z
SPKR	SW61		90M-SP001240R	90M-SP001240R	SW	SPUL19X1M071 HSH2B017Z
SPKR	SW62		90M-SP001240R	90M-SP001240R	SW	SPUL19X1M071 HSH2B017Z
					SUB TRANSF. PWB (CUP11833-2)	
SUB-T	C925		nsp	nsp	FILM CAP.	0.1UF 50V ZF CCFT1H104ZF
SUB-T	▲ C930		90M-DK100770R	90M-DK100770R	CER. CAP.	! 0.0047UF 2.5KV KCKDKS472ME
SUB-T	C931		nsp	00MOA10802520	ELECT CAP.	1000UF 25V CCEA1EH102E
SUB-T	C932		nsp	00MOA10701620	ELECT CAP.	100UF 16V CCEA1CH101T
SUB-T	C933		nsp	nsp	CER. CAP.	0.01UF 50V Z CCFT1H103ZF
SUB-T	C934		nsp	nsp	CER. CAP.	0.022UF 50V Z HCBS1H223ZFT
SUB-T	▲ C935		00MDF17104630	00MDF17104630	FILM CAP.	! 0.1UF 250V KD HCQE2E104KDE
SUB-T	C936		nsp	nsp	CER. CAP.	100PF 50V KB CCKT1H101KB
SUB-T	CN93		nsp	nsp	CONN.	5P STRAIGHT CJP05GA19ZY
SUB-T	CN94		nsp	nsp	CONN.	MOLEX35328-02 CJP02GA89ZM
SUB-T	CN96		nsp	nsp	CONN.	MOLEX35328-02 CJP02GA89ZM
SUB-T	D926		nsp	90M-HD201730R	DIODE	1N4003 CVD1N4003ST
SUB-T	D927		nsp	00MHD20015210	DIODE	1SS133T-77 CVD1SS133MT
SUB-T	D929		nsp	00MHD20015210	DIODE	1SS133T-77 CVD1SS133MT

NOTE : *nsp* PART IS LISTED FOR REFERENCE ONLY, MARANTZ WILL NOT SUPPLY THESE PARTS.

P.W.B. NAME	POS. NO.	VERS. COLOR	PART NO. (FOR EUR)	PART NO. (MZ)	PART NAME	DESCRIPTION
SUB-T	▲ F901		90M-FS001540R	90M-FS001540R	FUSE	# T 2.5A L 250V
SUB-T	▲ IC96		90M-HC300500R	90M-HC300500R	IC	! KA7805-ABTU
SUB-T	J320		nsp	nsp	CORD	SN95/PB5 0.6
SUB-T	J333		nsp	nsp	CORD	SN95/PB5 0.6
SUB-T	J802		nsp	nsp	CORD	SN95/PB5 0.6
SUB-T	JK91		90M-YT003120R	90M-YT003120R	TERMINAL	CINCH 2P (GOLD) REMOTE
SUB-T	Q925		90M-HT900080R	90M-HT900080R	TRS.	KSD1021Y
SUB-T	R930		nsp	nsp	RES.	10K OHM 1/5W J
SUB-T	R931		nsp	nsp	RES.	10 OHM 1/4W J
SUB-T	R932		nsp	nsp	RES.	47K OHM 1/5W J
SUB-T	R936		nsp	nsp	RES.	47 OHM 1/5W J
SUB-T	▲ RY92		00MLY10090010	00MLY10090010	RELAY	! SDT-S-109DMR
SUB-T	▲ TRS1		90M-TS001940R	90M-TS001940R	TRANSF.	! SUB SR5400(6400)/N1
SUB-T	TW91		nsp	nsp	CONN.	7.92MM(YUNHO)
					U-PRO & TONE PWB (CUP11954-1)	
U-PRO	BN34		nsp	nsp	CORD	WIRE ASSY
U-PRO	BN51			nsp	CONN.	MOLEX42140-2206
U-PRO	BN52		90M-YJ002930R	90M-YJ002930R	CONN.	7P STRAIGHT
U-PRO	BN56		nsp	nsp	CORD	WIRE ASSY
U-PRO	BN93		nsp	nsp	CORD	WIRE ASSY
U-PRO	BN95		nsp	nsp	CORD	WIRE ASSY
U-PRO	C501		nsp	00MOA10605020	ELECT CAP.	10UF 50V
U-PRO	C502		nsp	00MOA10605020	ELECT CAP.	10UF 50V
U-PRO	C503		nsp	nsp	CER. CAP.	100PF 50V K
U-PRO	C504		nsp	nsp	CER. CAP.	100PF 50V K
U-PRO	C505		nsp	00MOA22605020	ELECT CAP.	22UF 50V
U-PRO	C506		nsp	00MOA22605020	ELECT CAP.	22UF 50V
U-PRO	C507		nsp	90M-EJ000120R	ELECT CAP.	47UF 25V
U-PRO	C508		nsp	90M-EJ000120R	ELECT CAP.	47UF 25V
U-PRO	C509		nsp	nsp	CER. CAP.	100PF 50V K
U-PRO	C510		nsp	nsp	CER. CAP.	100PF 50V K
U-PRO	C511		nsp	00MOA47505020	ELECT CAP.	4.7UF 50V
U-PRO	C512		nsp	00MOA47505020	ELECT CAP.	4.7UF 50V
U-PRO	C513		nsp	nsp	FILM CAP.	0.033UF 50V J
U-PRO	C514		nsp	nsp	FILM CAP.	0.033UF 50V J
U-PRO	C515		nsp	nsp	FILM CAP.	0.015UF 50V J
U-PRO	C516		nsp	nsp	FILM CAP.	0.015UF 50V J
U-PRO	C517		nsp	nsp	CER. CAP.	220PF 50V K
U-PRO	C518		nsp	nsp	CER. CAP.	220PF 50V K
U-PRO	C530		nsp	00MOA22701620	ELECT CAP.	220UF 16V RA-2
U-PRO	C531		nsp	00MOA22701620	ELECT CAP.	220UF 16V RA-2
U-PRO	C541		nsp	00MOA22605020	ELECT CAP.	22UF 25V
U-PRO	C542		nsp	00MOA22605020	ELECT CAP.	22UF 25V
U-PRO	C548		nsp	nsp	CER. CAP.	100PF 50V K
U-PRO	C549		nsp	nsp	CER. CAP.	100PF 50V K
U-PRO	C601		nsp	nsp	CER. CAP.	0.01UF 50V Z
U-PRO	C602		nsp	nsp	CER. CAP.	0.01UF 50V Z
U-PRO	C606		nsp	00MOA10605020	ELECT CAP.	10UF 50V
U-PRO	C611		nsp	00MOA22701620	ELECT CAP.	220UF 16V
U-PRO	C612		nsp	nsp	CER. CAP.	0.01UF 50V Z
U-PRO	C613		nsp	00MOA22701620	ELECT CAP.	220UF 16V
U-PRO	C617		nsp	nsp	CER. CAP.	100PF 50V K
U-PRO	C618		nsp	nsp	CER. CAP.	0.01UF 50V Z
U-PRO	C619		nsp	00MOA10605020	ELECT CAP.	10UF 50V
U-PRO	C620		nsp	nsp	CER. CAP.	0.01UF 50V Z
U-PRO	C621		nsp	nsp	CER. CAP.	0.01UF 50V Z
U-PRO	C623		nsp	00MOA10605020	ELECT CAP.	10UF 50V
U-PRO	C625		nsp	nsp	CER. CAP.	22PF 50V J
U-PRO	C626		nsp	nsp	CER. CAP.	22PF 50V J
U-PRO	C627		nsp	nsp	CER. CAP.	0.01UF 50V Z
U-PRO	C630		nsp	nsp	CER. CAP.	0.01UF 50V Z
U-PRO	C631		nsp	nsp	CER. CAP.	0.01UF 50V Z
U-PRO	C632		nsp	nsp	CER. CAP.	0.1UF 50V Z
U-PRO	C633		nsp	00MOA10505020	ELECT CAP.	1UF 50V
U-PRO	C681		nsp	00MOA22701620	ELECT CAP.	220UF 16V
U-PRO	C687		nsp	00MOA10605020	ELECT CAP.	10UF 50V
U-PRO	C688		nsp	00MOA10605020	ELECT CAP.	10UF 50V

NOTE : "nsp" PART IS LISTED FOR REFERENCE ONLY, MARANTZ WILL NOT SUPPLY THESE PARTS.

P.W.B. NAME	POS. NO.	VERS. COLOR	PART NO. (FOR EUR)	PART NO. (MZ)	PART NAME	DESCRIPTION
U-PRO	C693		nsp	nsp	CER. CAP.	0.01UF 50V Z HCBS1H103ZFT
U-PRO	C694		nsp	nsp	CER. CAP.	0.01UF 50V Z HCBS1H103ZFT
U-PRO	C695		nsp	nsp	CER. CAP.	0.1UF 50V Z HCBS1H104ZFT
U-PRO	D601		nsp	00MHD20015210	DIODE	1SS133T-77 CVD1SS133MT
U-PRO	D606		nsp	00MHD20015210	DIODE	1SS133T-77 CVD1SS133MT
U-PRO	D613		nsp	00MHD20015210	DIODE	1SS133T-77 CVD1SS133MT
U-PRO	D621		nsp	00MHD20015210	DIODE	1SS133T-77 CVD1SS133MT
U-PRO	D622		nsp	00MHD20015210	DIODE	1SS133T-77 CVD1SS133MT
U-PRO	D623		nsp	00MHD20015210	DIODE	1SS133T-77 CVD1SS133MT
U-PRO	D651		90M-HI101040R	90M-HI101040R	L.E.D.	SLR342VCTB7T089 HVD342VCTB7T089
U-PRO	D652		90M-HI101040R	90M-HI101040R	L.E.D.	SLR342VCTB7T089 HVD342VCTB7T089
U-PRO	D653		90M-HI101040R	90M-HI101040R	L.E.D.	SLR342VCTB7T089 HVD342VCTB7T089
U-PRO	D654		90M-HI101040R	90M-HI101040R	L.E.D.	SLR342VCTB7T089 HVD342VCTB7T089
U-PRO	D655		90M-HI101040R	90M-HI101040R	L.E.D.	SLR342VCTB7T089 HVD342VCTB7T089
U-PRO	D656		90M-HI101040R	90M-HI101040R	L.E.D.	SLR342VCTB7T089 HVD342VCTB7T089
U-PRO	D657		90M-HI101040R	90M-HI101040R	L.E.D.	SLR342VCTB7T089 HVD342VCTB7T089
U-PRO	D675		90M-HI101040R	90M-HI101040R	L.E.D.	SLR342VCTB7T089 HVD342VCTB7T089
U-PRO	IC52		90M-HC109460R	90M-HC109460R	IC	NJM2114M HVINJM2114M
U-PRO	IC53		00MHC10102090	00MHC10102090	IC	NJM2068MD-TE1 HVINJM2068MDTE1
U-PRO	IC54		00MHC10102090	00MHC10102090	IC	NJM2068MD-TE1 HVINJM2068MDTE1
U-PRO	IC55		00MHC10102090	00MHC10102090	IC	NJM2068MD-TE1 HVINJM2068MDTE1
U-PRO	IC61		90M-HS44CWT0R	90M-HS44CWT0R	U-PRO	TMP86FH12MG PM6002 CVITMP86FH12MG
U-PRO	J101		nsp	nsp	CORD	SN95/PB5 0.6 C3A206
U-PRO	J102		nsp	nsp	CORD	SN95/PB5 0.6 C3A206
U-PRO	J103		nsp	nsp	CORD	SN95/PB5 0.6 C3A206
U-PRO	J107		nsp	nsp	CORD	SN95/PB5 0.6 C3A206
U-PRO	J108		nsp	nsp	CORD	SN95/PB5 0.6 C3A206
U-PRO	J109		nsp	nsp	CORD	SN95/PB5 0.6 C3A206
U-PRO	J111		nsp	nsp	CORD	SN95/PB5 0.6 C3A206
U-PRO	J112		nsp	nsp	CORD	SN95/PB5 0.6 C3A206
U-PRO	J113		nsp	nsp	CORD	SN95/PB5 0.6 C3A206
U-PRO	J114		nsp	nsp	CORD	SN95/PB5 0.6 C3A206
U-PRO	J117		nsp	nsp	CORD	SN95/PB5 0.6 C3A206
U-PRO	J118		nsp	nsp	CORD	SN95/PB5 0.6 C3A206
U-PRO	J119		nsp	nsp	CORD	SN95/PB5 0.6 C3A206
U-PRO	J120		nsp	nsp	CORD	SN95/PB5 0.6 C3A206
U-PRO	J121		nsp	nsp	CORD	SN95/PB5 0.6 C3A206
U-PRO	J123		nsp	nsp	CORD	SN95/PB5 0.6 C3A206
U-PRO	J125		nsp	nsp	CORD	SN95/PB5 0.6 C3A206
U-PRO	J126		nsp	nsp	CORD	SN95/PB5 0.6 C3A206
U-PRO	J127		nsp	nsp	CORD	SN95/PB5 0.6 C3A206
U-PRO	J128		nsp	nsp	CORD	SN95/PB5 0.6 C3A206
U-PRO	J201		nsp	nsp	CORD	SN95/PB5 0.6 C3A206
U-PRO	J203		nsp	nsp	CORD	SN95/PB5 0.6 C3A206
U-PRO	J204		nsp	nsp	CORD	SN95/PB5 0.6 C3A206
U-PRO	J205		nsp	nsp	CORD	SN95/PB5 0.6 C3A206
U-PRO	J206		nsp	nsp	CORD	SN95/PB5 0.6 C3A206
U-PRO	J207		nsp	nsp	CORD	SN95/PB5 0.6 C3A206
U-PRO	J209		nsp	nsp	CORD	SN95/PB5 0.6 C3A206
U-PRO	J210		nsp	nsp	CORD	SN95/PB5 0.6 C3A206
U-PRO	J211		nsp	nsp	CORD	SN95/PB5 0.6 C3A206
U-PRO	J212		nsp	nsp	CORD	SN95/PB5 0.6 C3A206
U-PRO	J213		nsp	nsp	CORD	SN95/PB5 0.6 C3A206
U-PRO	J218		nsp	nsp	CORD	SN95/PB5 0.6 C3A206
U-PRO	J220		nsp	nsp	CORD	SN95/PB5 0.6 C3A206
U-PRO	J221		nsp	nsp	CORD	SN95/PB5 0.6 C3A206
U-PRO	J223		nsp	nsp	CORD	SN95/PB5 0.6 C3A206
U-PRO	J224		nsp	nsp	CORD	SN95/PB5 0.6 C3A206
U-PRO	J225		nsp	nsp	CORD	SN95/PB5 0.6 C3A206
U-PRO	J226		nsp	nsp	CORD	SN95/PB5 0.6 C3A206
U-PRO	J227		nsp	nsp	CORD	SN95/PB5 0.6 C3A206
U-PRO	J301		nsp	nsp	CORD	SN95/PB5 0.6 C3A206
U-PRO	J302		nsp	nsp	CORD	SN95/PB5 0.6 C3A206
U-PRO	J304		nsp	nsp	CORD	SN95/PB5 0.6 C3A206
U-PRO	J305		nsp	nsp	CORD	SN95/PB5 0.6 C3A206
U-PRO	J307		nsp	nsp	CORD	SN95/PB5 0.6 C3A206
U-PRO	J308		nsp	nsp	CORD	SN95/PB5 0.6 C3A206

NOTE : "nsp" PART IS LISTED FOR REFERENCE ONLY, MARANTZ WILL NOT SUPPLY THESE PARTS.

P.W.B. NAME	POS. NO.	VERS. COLOR	PART NO. (FOR EUR)	PART NO. (MZ)	PART NAME	DESCRIPTION
U-PRO	J309		nsp	nsp	CORD	SN95/PB5 0.6 C3A206
U-PRO	J312		nsp	nsp	CORD	SN95/PB5 0.6 C3A206
U-PRO	J315		nsp	nsp	CORD	SN95/PB5 0.6 C3A206
U-PRO	J317		nsp	nsp	CORD	SN95/PB5 0.6 C3A206
U-PRO	J318		nsp	nsp	CORD	SN95/PB5 0.6 C3A206
U-PRO	J319		nsp	nsp	CORD	SN95/PB5 0.6 C3A206
U-PRO	J320		nsp	nsp	CORD	SN95/PB5 0.6 C3A206
U-PRO	J321		nsp	nsp	CORD	SN95/PB5 0.6 C3A206
U-PRO	J322		nsp	nsp	CORD	SN95/PB5 0.6 C3A206
U-PRO	J323		nsp	nsp	CORD	SN95/PB5 0.6 C3A206
U-PRO	J324		nsp	nsp	CORD	SN95/PB5 0.6 C3A206
U-PRO	J325		nsp	nsp	CORD	SN95/PB5 0.6 C3A206
U-PRO	J326		nsp	nsp	CORD	SN95/PB5 0.6 C3A206
U-PRO	J328		nsp	nsp	CORD	SN95/PB5 0.6 C3A206
U-PRO	J329		nsp	nsp	CORD	SN95/PB5 0.6 C3A206
U-PRO	J330		nsp	nsp	CORD	SN95/PB5 0.6 C3A206
U-PRO	J331		nsp	nsp	CORD	SN95/PB5 0.6 C3A206
U-PRO	J332		nsp	nsp	CORD	SN95/PB5 0.6 C3A206
U-PRO	J333		nsp	nsp	CORD	SN95/PB5 0.6 C3A206
U-PRO	J334		nsp	nsp	CORD	SN95/PB5 0.6 C3A206
U-PRO	J401		nsp	nsp	CORD	SN95/PB5 0.6 C3A206
U-PRO	J403		nsp	nsp	CORD	SN95/PB5 0.6 C3A206
U-PRO	J405		nsp	nsp	CORD	SN95/PB5 0.6 C3A206
U-PRO	J406		nsp	nsp	CORD	SN95/PB5 0.6 C3A206
U-PRO	J407		nsp	nsp	CORD	SN95/PB5 0.6 C3A206
U-PRO	J408		nsp	nsp	CORD	SN95/PB5 0.6 C3A206
U-PRO	J409		nsp	nsp	CORD	SN95/PB5 0.6 C3A206
U-PRO	J410		nsp	nsp	CORD	SN95/PB5 0.6 C3A206
U-PRO	J412		nsp	nsp	CORD	SN95/PB5 0.6 C3A206
U-PRO	J414		nsp	nsp	CORD	SN95/PB5 0.6 C3A206
U-PRO	J415		nsp	nsp	CORD	SN95/PB5 0.6 C3A206
U-PRO	J416		nsp	nsp	CORD	SN95/PB5 0.6 C3A206
U-PRO	J417		nsp	nsp	CORD	SN95/PB5 0.6 C3A206
U-PRO	J502		nsp	nsp	CORD	SN95/PB5 0.6 C3A206
U-PRO	J507		nsp	nsp	CORD	SN95/PB5 0.6 C3A206
U-PRO	J508		nsp	nsp	CORD	SN95/PB5 0.6 C3A206
U-PRO	J509		nsp	nsp	CORD	SN95/PB5 0.6 C3A206
U-PRO	J510		nsp	nsp	CORD	SN95/PB5 0.6 C3A206
U-PRO	J511		nsp	nsp	CORD	SN95/PB5 0.6 C3A206
U-PRO	J512		nsp	nsp	CORD	SN95/PB5 0.6 C3A206
U-PRO	J513		nsp	nsp	CORD	SN95/PB5 0.6 C3A206
U-PRO	J514		nsp	nsp	CORD	SN95/PB5 0.6 C3A206
U-PRO	J601		nsp	nsp	CORD	SN95/PB5 0.6 C3A206
U-PRO	J602		nsp	nsp	CORD	SN95/PB5 0.6 C3A206
U-PRO	J701		nsp	nsp	CORD	SN95/PB5 0.6 C3A206
U-PRO	J702		nsp	nsp	CORD	SN95/PB5 0.6 C3A206
U-PRO	JW61		nsp	nsp	CORD	WIRE ASSY CWZAH300JW74
U-PRO	Q603		00MHT327851H0	00MHT327851H0	TRS.	KSC2785Y HVTKSC2785YT
U-PRO	Q604		00MHT327851H0	00MHT327851H0	TRS.	KSC2785Y HVTKSC2785YT
U-PRO	Q605		00MHT327851H0	00MHT327851H0	TRS.	KSC2785Y HVTKSC2785YT
U-PRO	Q613		90M-HT100390R	90M-HT100390R	TRS.	KSA1175Y HVTKSA1175YT
U-PRO	Q617		00MHT327851H0	00MHT327851H0	TRS.	KSC2785Y HVTKSC2785YT
U-PRO	Q631		90M-BA001450R	90M-BA001450R	TRS.	KRA107M HVTKRA107MT
U-PRO	Q634		90M-BA001450R	90M-BA001450R	TRS.	KRA107M HVTKRA107MT
U-PRO	Q635		90M-BA001450R	90M-BA001450R	TRS.	KRA107M HVTKRA107MT
U-PRO	Q636		90M-BA001450R	90M-BA001450R	TRS.	KRA107M HVTKRA107MT
U-PRO	Q683		90M-HT900080R	90M-HT900080R	TRS.	KSD1021Y HVTKSD1021YT
U-PRO	Q684		90M-HT900080R	90M-HT900080R	TRS.	KSD1021Y HVTKSD1021YT
U-PRO	Q687		90M-HT700060R	90M-HT700060R	TRS.	KSB811Y HVTKSB811YT
U-PRO	Q688		90M-HT700060R	90M-HT700060R	TRS.	KSB811Y HVTKSB811YT
U-PRO	Q689		90M-BA001460R	90M-BA001460R	TRS.	KRC107M HVTKRC107MT
U-PRO	Q690		90M-BA001460R	90M-BA001460R	TRS.	KRC107M HVTKRC107MT
U-PRO	Q691		90M-BA001460R	90M-BA001460R	TRS.	KRC107M HVTKRC107MT
U-PRO	Q692		90M-BA001460R	90M-BA001460R	TRS.	KRC107M HVTKRC107MT
U-PRO	R501		nsp	nsp	RES.	100K OHM 1/5W J CRD20TJ104T
U-PRO	R502		nsp	nsp	RES.	100K OHM 1/5W J CRD20TJ104T
U-PRO	R503		nsp	nsp	RES.	2.7K OHM 1/5W J CRD20TJ272T

NOTE : "nsp" PART IS LISTED FOR REFERENCE ONLY, MARANTZ WILL NOT SUPPLY THESE PARTS.

P.W.B. NAME	POS. NO.	VERS. COLOR	PART NO. (FOR EUR)	PART NO. (MZ)	PART NAME	DESCRIPTION
U-PRO	R504		nsp	nsp	RES.	2.7K OHM 1/5W J CRD20TJ272T
U-PRO	R505		nsp	nsp	RES.	100 OHM 1/5W J CRD20TJ101T
U-PRO	R506		nsp	nsp	RES.	100 OHM 1/5W J CRD20TJ101T
U-PRO	R507		nsp	nsp	RES.	2.7K OHM 1/5W J CRD20TJ272T
U-PRO	R508		nsp	nsp	RES.	2.7K OHM 1/5W J CRD20TJ272T
U-PRO	R509		nsp	nsp	RES.	100K OHM 1/5W J CRD20TJ104T
U-PRO	R510		nsp	nsp	RES.	100K OHM 1/5W J CRD20TJ104T
U-PRO	R511		nsp	nsp	RES.	1K OHM 1/5W J CRD20TJ102T
U-PRO	R512		nsp	nsp	RES.	1K OHM 1/5W J CRD20TJ102T
U-PRO	R513		nsp	nsp	RES.	33K OHM 1/5W J CRD20TJ333T
U-PRO	R514		nsp	nsp	RES.	33K OHM 1/5W J CRD20TJ333T
U-PRO	R515		nsp	nsp	RES.	1.2K OHM 1/5W J CRD20TJ122T
U-PRO	R516		nsp	nsp	RES.	1.2K OHM 1/5W J CRD20TJ122T
U-PRO	R517		nsp	nsp	RES.	33K OHM 1/5W J CRD20TJ333T
U-PRO	R518		nsp	nsp	RES.	33K OHM 1/5W J CRD20TJ333T
U-PRO	R519		nsp	nsp	RES.	220 OHM 1/5W J CRD20TJ221T
U-PRO	R520		nsp	nsp	RES.	220 OHM 1/5W J CRD20TJ221T
U-PRO	R530		nsp	nsp	RES.	100 OHM 1/5W J CRD20TJ101T
U-PRO	R531		nsp	nsp	RES.	100 OHM 1/5W J CRD20TJ101T
U-PRO	R541		nsp	nsp	RES.	2.7K OHM 1/5W J CRD20TJ272T
U-PRO	R542		nsp	nsp	RES.	2.7K OHM 1/5W J CRD20TJ272T
U-PRO	R543		nsp	nsp	RES.	470 OHM 1/5W J CRD20TJ471T
U-PRO	R544		nsp	nsp	RES.	470 OHM 1/5W J CRD20TJ471T
U-PRO	R545		nsp	nsp	RES.	100K OHM 1/5W J CRD20TJ104T
U-PRO	R546		nsp	nsp	RES.	100K OHM 1/5W J CRD20TJ104T
U-PRO	R601		nsp	nsp	RES.	22K OHM 1/5W J CRD20TJ223T
U-PRO	R602		nsp	nsp	RES.	10K OHM 1/5W J CRD20TJ103T
U-PRO	R603		nsp	nsp	RES.	22K OHM 1/5W J CRD20TJ223T
U-PRO	R604		nsp	nsp	RES.	4.7K OHM 1/5W J CRD20TJ472T
U-PRO	R605		nsp	nsp	RES.	2.2K OHM 1/5W J CRD20TJ222T
U-PRO	R606		nsp	nsp	RES.	100 OHM 1/5W J CRD20TJ101T
U-PRO	R607		nsp	nsp	RES.	47K OHM 1/5W J CRD20TJ473T
U-PRO	R608		nsp	nsp	RES.	22K OHM 1/5W J CRD20TJ223T
U-PRO	R611		nsp	nsp	RES.	100 OHM 1/5W J CRD20TJ101T
U-PRO	R612		nsp	nsp	RES.	100 OHM 1/5W J CRD20TJ101T
U-PRO	R613		nsp	nsp	RES.	10K OHM 1/5W J CRD20TJ103T
U-PRO	R614		nsp	nsp	RES.	10K OHM 1/5W J CRD20TJ103T
U-PRO	R615		nsp	nsp	RES.	47K OHM 1/5W J CRD20TJ473T
U-PRO	R617		nsp	nsp	RES.	22K OHM 1/5W J CRD20TJ223T
U-PRO	R618		nsp	nsp	RES.	10 OHM 1/5W J CRD20TJ100T
U-PRO	R619		nsp	nsp	RES.	10K OHM 1/5W J CRD20TJ103T
U-PRO	R620		nsp	nsp	RES.	10 OHM 1/5W J CRD20TJ100T
U-PRO	R623		nsp	nsp	RES.	22K OHM 1/5W J CRD20TJ223T
U-PRO	R624		nsp	nsp	RES.	22K OHM 1/5W J CRD20TJ223T
U-PRO	R625		nsp	nsp	RES.	22K OHM 1/5W J CRD20TJ223T
U-PRO	R626		nsp	nsp	RES.	22K OHM 1/5W J CRD20TJ223T
U-PRO	R627		nsp	nsp	RES.	120 OHM 1/5W J CRD20TJ121T
U-PRO	R628		nsp	nsp	RES.	1M OHM 1/5W J CRD20TJ105T
U-PRO	R635		nsp	nsp	RES.	4.7K OHM 1/5W J CRD20TJ472T
U-PRO	R636		nsp	nsp	RES.	4.7K OHM 1/5W J CRD20TJ472T
U-PRO	R637		nsp	nsp	RES.	4.7K OHM 1/5W J CRD20TJ472T
U-PRO	R648		nsp	nsp	RES.	10K OHM 1/5W J CRD20TJ103T
U-PRO	R649		nsp	nsp	RES.	10K OHM 1/5W J CRD20TJ103T
U-PRO	R650		nsp	nsp	RES.	10K OHM 1/5W J CRD20TJ103T
U-PRO	R651		nsp	nsp	RES.	470K OHM 1/5W J CRD20TJ474T
U-PRO	R652		nsp	nsp	RES.	470K OHM 1/5W J CRD20TJ474T
U-PRO	R653		nsp	nsp	RES.	470K OHM 1/5W J CRD20TJ474T
U-PRO	R654		nsp	nsp	RES.	470K OHM 1/5W J CRD20TJ474T
U-PRO	R655		nsp	nsp	RES.	470K OHM 1/5W J CRD20TJ474T
U-PRO	R656		nsp	nsp	RES.	470K OHM 1/5W J CRD20TJ474T
U-PRO	R657		nsp	nsp	RES.	470K OHM 1/5W J CRD20TJ474T
U-PRO	R658		nsp	nsp	RES.	390 OHM 1/5W J CRD20TJ391T
U-PRO	R659		nsp	nsp	RES.	390 OHM 1/5W J CRD20TJ391T
U-PRO	R660		nsp	nsp	RES.	10K OHM 1/5W J CRD20TJ103T
U-PRO	R675		nsp	nsp	RES.	560 OHM 1/5W J CRD20TJ561T
U-PRO	R681		nsp	nsp	RES.	10 OHM 1/5W J CRD20TJ100T
U-PRO	R683		nsp	nsp	RES.	2.2K OHM 1/5W J CRD20TJ222T

NOTE : "nsp" PART IS LISTED FOR REFERENCE ONLY, MARANTZ WILL NOT SUPPLY THESE PARTS.

P.W.B. NAME	POS. NO.	VERS. COLOR	PART NO. (FOR EUR)	PART NO. (MZ)	PART NAME	DESCRIPTION	
U-PRO	R684		nsp	nsp	RES.	2.2K OHM 1/5W J	CRD20TJ222T
U-PRO	R685		nsp	nsp	RES.	47K OHM 1/5W J	CRD20TJ473T
U-PRO	R686		nsp	nsp	RES.	47K OHM 1/5W J	CRD20TJ473T
U-PRO	R687		nsp	nsp	RES.	2.2K OHM 1/5W J	CRD20TJ222T
U-PRO	R688		nsp	nsp	RES.	2.2K OHM 1/5W J	CRD20TJ222T
U-PRO	R689		nsp	nsp	RES.	7.5K OHM 1/5W J	CRD20TJ752T
U-PRO	R690		nsp	nsp	RES.	5.6K OHM 1/5W J	CRD20TJ562T
U-PRO	R693		nsp	nsp	RES.	3.3K OHM 1/5W J	CRD20TJ332T
U-PRO	R694		nsp	nsp	RES.	2.7K OHM 1/5W J	CRD20TJ272T
U-PRO	R695		nsp	nsp	RES.	1.8K OHM 1/5W J	CRD20TJ182T
U-PRO	R696		nsp	nsp	RES.	1.5K OHM 1/5W J	CRD20TJ152T
U-PRO	R697		nsp	nsp	RES.	1K OHM 1/5W J	CRD20TJ102T
U-PRO	RC61		00MHW10004210	00MHW10004210	PHOTO UNIT	RPM6936-V4	BRVRPM6936V4
U-PRO	RC61		00MHW10004210	00MHW10004210	PHOTO UNIT	RPM6936-V4	CRVRPM6936V4
U-PRO	SW31		90M-SR000290R	90M-SR000290R	ROTARY SW	VR ENCODER	CSR2A034Z
U-PRO	VR51		90M-RB000060R	90M-RB000060R	VAR. RES.	RES VARIABLE(BALANCE)	CVV2X11M203Z
U-PRO	VR54		90M-RB000050R	90M-RB000050R	VAR. RES.	RES VARIABLE(TONE)	CVV2X10B103Z
U-PRO	VR55		90M-RB000050R	90M-RB000050R	VAR. RES.	RES VARIABLE(TONE)	CVV2X10B103Z
U-PRO	VR65		90M-SR000250R	90M-SR000250R	ROTARY SW	SRBV18	HSR8A004Z
U-PRO	X621		90M-JX001270R	90M-JX001270R	X'TAL	16.000MHZ	HOX16000E160T

NOTE : "nsp" PART IS LISTED FOR REFERENCE ONLY, MARANTZ WILL NOT SUPPLY THESE PARTS.

11. ABOUT REPLACE THE MICROPROCESSOR WITH A NEW ONE

When replaced of the U-PRO (Microprocessor) or the Flash ROM, confirm contents of the following.

PWB Name	Pos. No.	Description	After replaced	Remark
U-PRO	IC61	TMP86FH12MG PM6002	A	

After replaced

A : Mask ROM (With software). No need write-in of software to the microprocessor.

B : Flash ROM (With software). Usually, no need write-in of software. But, when the software was updated, you should be write-in of the new software to the microprocessor or flash ROM. Please check the software version.

C : Empty Flash ROM (Without software). You should be write-in of the software to the microprocessor or flash ROM.
Refer to "Update procedure" or "writing procedure", when you should be write-in the software.

マイコン等を交換した場合の対応について

U-PRO(マイコン)およびFlash ROM等を交換した場合の対応方法を下記の記載します。

PWB Name	Pos. No.	Description	交換時の対応	備考
U-PRO	IC61	TMP86FH12MG PM6002	A	

交換時の対応

A : Mask ROM (ソフトウェア書き込み済み) 交換時にソフトウェアの書き込みは必要ありません。

B : Flash ROM (ソフトウェア書き込み済み) バージョンアップにより交換時にソフトウェアの書き換えが必要な場合があります。バージョンの確認をしてください。

C : 空ROM (Flash ROM) 交換時必ずソフトウェアの書き込みが必要になります。Update、書き込み方法を参照してください。