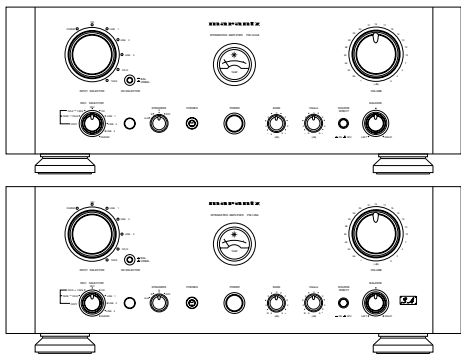


Service Manual

PM14A /N1B, /N1G, /C1G, /E1G, /K1G, /S1G
PM-14SA F_N
Integrated amplifier



REMARK : This service manual explains them by extracting the different specifications of the "Cosmetics Parts" and "Preamp. PCB (P151) and Electrical Parts" were changed to new design for the model **PM-14SA/PM-14mkl** based on the model 74PM14/02B/02G. All other information is described in the service manual of the model PM-14 (Code number : 4822 725 51175 or 289J855010). The dispatch of the parts for after sales service has to be referred to this service manual, with the first priority. For this reason, please use this service manual with referring to the model PM-14 service manual without fail.

PM-14SA F_NはPM-14 F_Nの外装部分、プリアンプ部分の基板（新規）とその電気部品、製品名表示部分を変更した製品です。このサービスマニュアルにはPM-14 F_Nとの相違部分のみを記載してあります。その他の部分はPM-14のサービスマニュアル（289J855010 または 4822 725 51175）を参照してください。

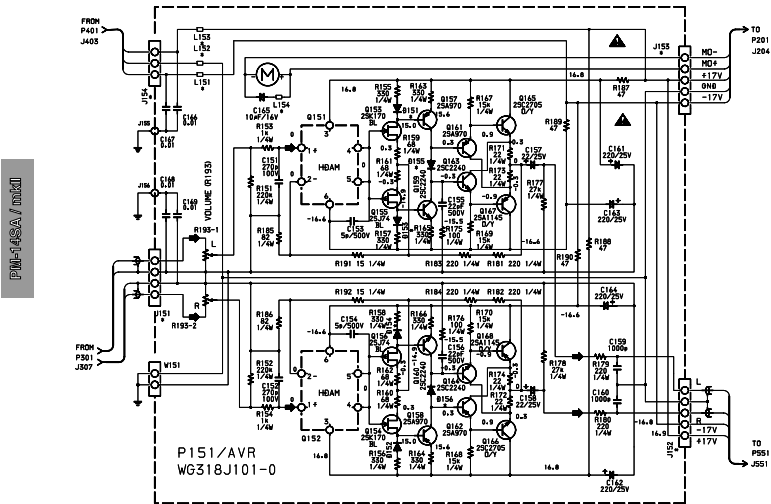
Please use this service manual with referring to the user guide (D.F.U.) without fail.
修理の際は、必ず取扱説明書を準備し操作方法を確認の上作業を行ってください。

marantz®

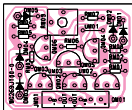
PM-14SA / PM-14mkl

318J855020 MIT
3120 785 22390
First Issue 2000.07

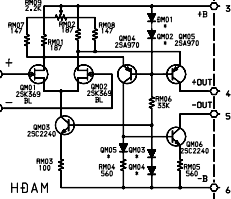
SCHEMATIC DIAGRAM (P151)



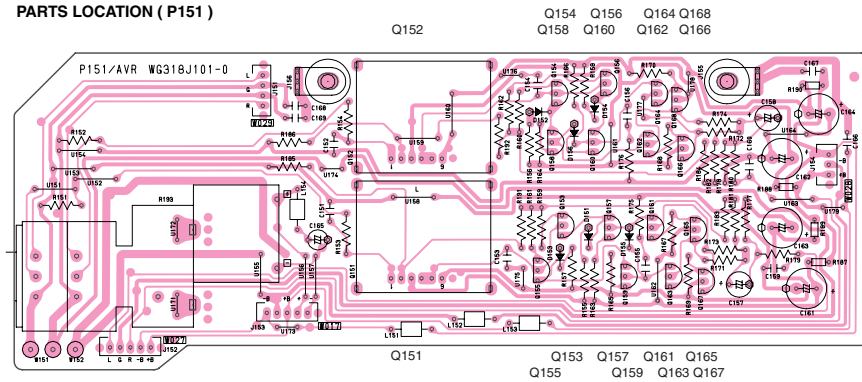
HDA



Q151, Q152



PARTS LOCATION (P151)



PARTS LIST

POS. NO	VERS. COLOR	PART NO. (FOR PCS)	DESCRIPTION	PART NO. (M/J)	POS. NO	VERS. COLOR	PART NO. (FOR PCS)	DESCRIPTION	PART NO. (M/J)
C151 C152 C153 C154 C155 C156 C157 C158 C159 C160 C161 C164 C165 C166 C169		P151-VOL. AND PRE AMP. CIRCUIT BOARD			R175		4822 111 20407	100Ω ± 1% 1/4W ERD	NR01101140
		P151-CAPACITORS			R176		4822 111 20407	100Ω ± 1% 1/4W ERD	NR01101140
		9965 000 01560	FILM 270pF ±5% 100V OFC	OF55271540	R177		4822 111 20415	27kΩ ± 1% 1/4W ERD	NR01273140
		9965 000 01560	FILM 270pF ±5% 100V OFC	OF55271540	R178		4822 111 20415	27kΩ ± 1% 1/4W ERD	NR01273140
		4822 123 30093	MICA 5pF ±0.5pF 500V FE922H	DF31050520	}		4822 111 20413	220Ω ± 1% 1/4W ERD	NR01221140
		4822 123 30093	MICA 5pF ±0.5pF 500V FE922H	DF31050520					
		4822 123 30089	MICA 22pF ±5% 500V FE	DF35220520	R184				
		4822 123 30089	MICA 22pF ±5% 500V FE	DF35220520	R185		9965 000 05736	82Ω ± 1% 1/4W ERD	NR01820140
		4822 124 80578	ELECT 22μF 25V ARA	OA22602550	R186		9965 000 05736	82Ω ± 1% 1/4W ERD	NR01820140
		4822 124 80578	ELECT 22μF 25V ARA	OA22602550	R187				
R151 R152 R153 R154 R155 R158 R159 R162 R163 R166 R167 R170 R171 R174		9965 000 05739	FILM 0.001μF ±5% 100V OFC	OF55102540	}		4822 052 10479	47kΩ ± 5% 1/6W	GG05470160
		9965 000 05739	FILM 0.001μF ±5% 100V OFC	OF55102540					
		4822 124 90051	ELECT 220 μF M 25V ARA	OA22702550	R190				
		4822 124 23112	ELECT 10μF 16V	EO10601630	R191		4822 111 20422	15Ω ± 1% 1/4W ERD	NR01150140
		4822 126 12496	CER. 0.01μF +80 -20% 50V	DO38103010	R192		4822 111 20422	15Ω ± 1% 1/4W ERD	NR01150140
		P151-RESISTORS			R193		9965 000 05745	VARIABLE 20kΩ X2 R27	RY02030050
		4822 111 20423	220kΩ ± 1% 1/4W ERD	NR01224140	P151-SEMICONDUCTORS				
		4822 111 20423	220kΩ ± 1% 1/4W ERD	NR01224140	D151		4822 130 32362	DIODE 1SS176 MA165 1SS254 30V 0.1A	HD20002000
		4822 111 20408	1kΩ ± 1% 1/4W ERD	NR01102140	D156				
		4822 111 20408	1kΩ ± 1% 1/4W ERD	NR01102140	Q151			NEW HDAM	KH269/J1010
Q152 Q154 Q156 Q158 Q160 Q162 Q164 Q166 Q168		4822 111 20416	330Ω ± 1% 1/4W ERD	NR01331140	Q152			NEW HDAM	KH269/J1010
		9965 000 01565	68Ω ± 1% 1/4W ERD	NR01680140	Q153		5322130 41844	FET 2SK170 BL VGDS=-40V PD=0.4V	HF201701G0
		4822 111 20416	330Ω ± 1% 1/4W ERD	NR01331140	Q154		5322130 41844	FET 2SK170 BL VGDS=-40V PD=0.4V	HF201701G0
		9965 000 05742	15kΩ ± 1% 1/4W ERD	NR01153140	Q155		4822 130 62649	FET 2SJ74 BL VGDS=-25V PD=24W	HF100741G0
		9965 000 05743	22Ω ± 1% 1/4W ERD	NR01220140	Q156		4822 130 62649	FET 2SJ74 BL VGDS=-25V PD=24W	HF100741G0
					Q157		4822 130 42949	TRS. 2SA970 GR OR BL	HT109702A0
					Q158		4822 130 42949	TRS. 2SA970 GR OR BL	HT109702A0
					Q159		4822 130 43233	TRS. 2SC2240 GR OR BL	HT322402A0
					Q160		4822 130 42949	TRS. 2SA970 GR OR BL	HT109702A0
					Q161		4822 130 42949	TRS. 2SA970 GR OR BL	HT109702A0
Q151 Q153 Q155 Q157 Q159 Q161 Q163 Q165 Q167					Q162		4822 130 42949	TRS. 2SA970 GR OR BL	HT109702A0
					Q163		4822 130 43233	TRS. 2SC2240 GR OR BL	HT322402A0
					Q164		4822 130 43233	TRS. 2SC2240 GR OR BL	HT322402A0
					Q165		4822 130 43283	TRS. 2SC2705 O OR Y	HT327052A0
					Q166		4822 130 43283	TRS. 2SC2705 O OR Y	HT327052A0

POS. NO	VERS. COLOR	PART NO. (FOR PCS)	DESCRIPTION	PART NO. (M/J)
Q167 Q168		4822 130 42999 4822 130 42999	TRS. 2SA1145 O OR Y TRS. 2SA1145 O OR Y	HT111452A0 HT111452A0
L151 L154		4822 158 60605	FERRIT BEADS (B-01-RT)	FC90050060
Q218	/C, /E, /K, /N, /S	9965 000 01584	P201-μ-COM CIRCUIT BOARD MICROPROCESSOR TMP47CP200BN	HU313JT000
001B	/C1G, /E1G, /K1G, /S1G		COSMETICS FRONT PANEL ASSY	318J248540
001B	/FN		FRONT PANEL ASSY	318J248510
001B	/N1B		FRONT PANEL ASSY	318J248530
001B	/C1G, /E1G, /K1G, /S1G		FRONT PANEL ASSY FRONT PANEL	318J248520 318J248120
002B				
002B	/FN		FRONT PANEL	289J248130
002B	/N1B	9965 000 05750	FRONT PANEL	318J248110
002B	/N1B	9965 000 05746	FRONT PANEL	318J248010
027B	GOLD	9965 000 05751	KNOB FOR MASTER VOLUME	318J154110
027B	BLACK	9965 000 05747	KNOB FOR MASTER VOLUME	318J154010
028B	GOLD	9965 000 05752	KNOB FOR INPUT SELECTOR	318J154120
028B	BLACK	9965 000 05748	KNOB FOR INPUT SELECTOR	318J154020
039B	/C1G, /E1G, /K1G, /S1G		ESCUTCHEON FOR METER	289J063120
039B	/N1G	4822 532 13059	ESCUTCHEON FOR METER	289J063110
039B	BLACK	4822 532 13058	ESCUTCHEON FOR METER	289J063010
041B	/C1G, /E1G, /K1G, /S1G		BADGE SUPER AUDIO	318J251020
041B	/FN		BADGE SUPER AUDIO	318J251010
042B	GOLD	9965 000 01554	BADGE MARANTZ	313J251110
042B	BLACK	9965 000 01553	BADGE MARANTZ	313J251010
▲ F001	/E		FUSE 10A 250V	FS11000570
▲ J014	/E		FUSE HOLDER 31.8mm	YJ08000600
▲ L001	/E		MAINS TRANSFORMER	TS42002110
▲ W001	/C		MAINS CORD 10A 250V	ZC02009010
▲ W001	/E		MAINS CORD 125V MITI	ZC01802080
▲ W001	/K		MAINS CORD 10A 250V	ZC01803090
▲ W001	/S		MAINS CORD 10A 250V	ZC01804100
PACKING				
001T	/C, /E, /K, /S		USER GUIDE	318J851350
001T	/F		USER GUIDE	318J851110
001T	/N	9965 000 05749	USER GUIDE	318J851310
T001	/C, /E, /K, /N, /S	9965 000 01556	REMOTE COMMANDER RC-17MK2PM	ZK313J0010
NOT STANDARD SPARE PARTS				
001S	/FN		PACKING CASE	318J801010
J099	/C, /K		JACK AC ADAPTER	YJ04001240