

**Manual de ensamble de el
amplificador de 190w**

**Manual assembly 190w
amplifier**

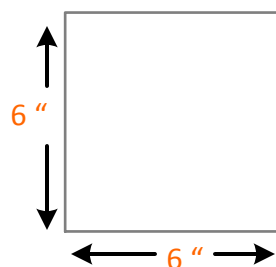
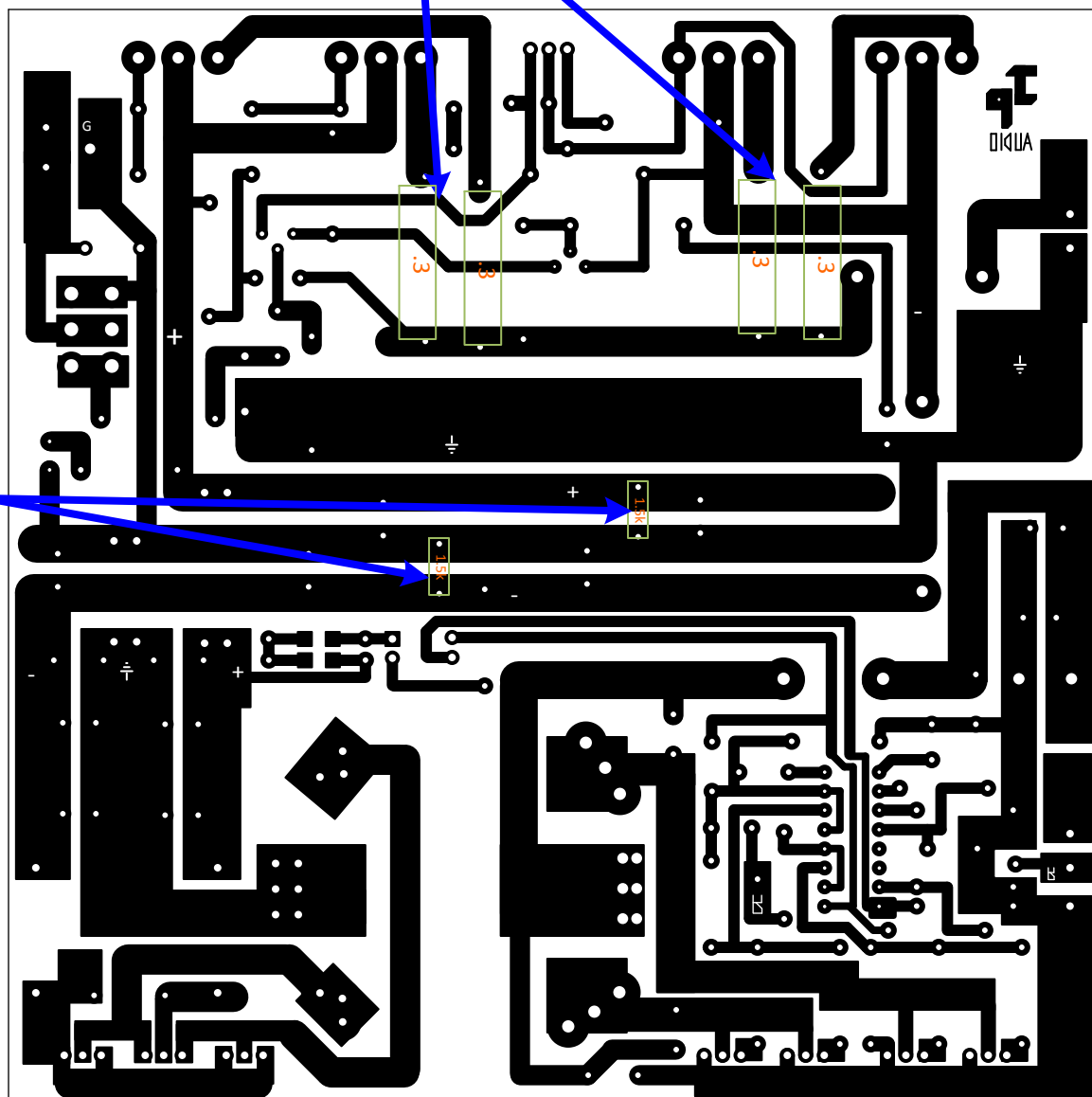


Todas las resistencias son de 1/2 w excepto las que identifico aqui

All resistors are 1/2 w except those identified here

0.3 ohms 5w

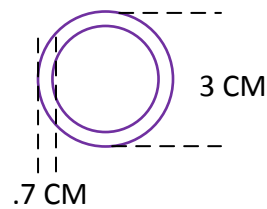
1.5k ohms 2 or 3 w



MEDIDAS DEL PCB EN PULGADAS

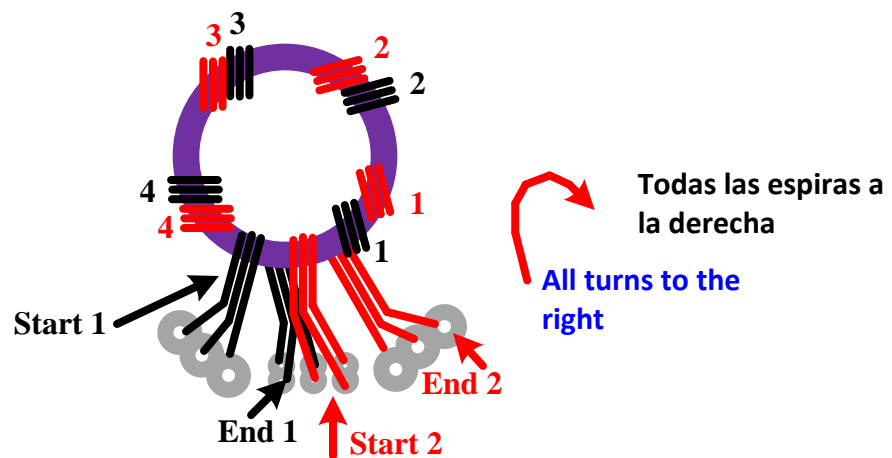
requerimientos minimos para la bobina que elevara el voltaje

minimum requirements for the coil voltage rise



son 3 alambres de 1.5 mm x 4 espiras + 4 espiras

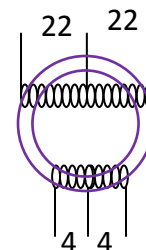
are 3 wire 1.5 mm x 4 turns + 4 turns



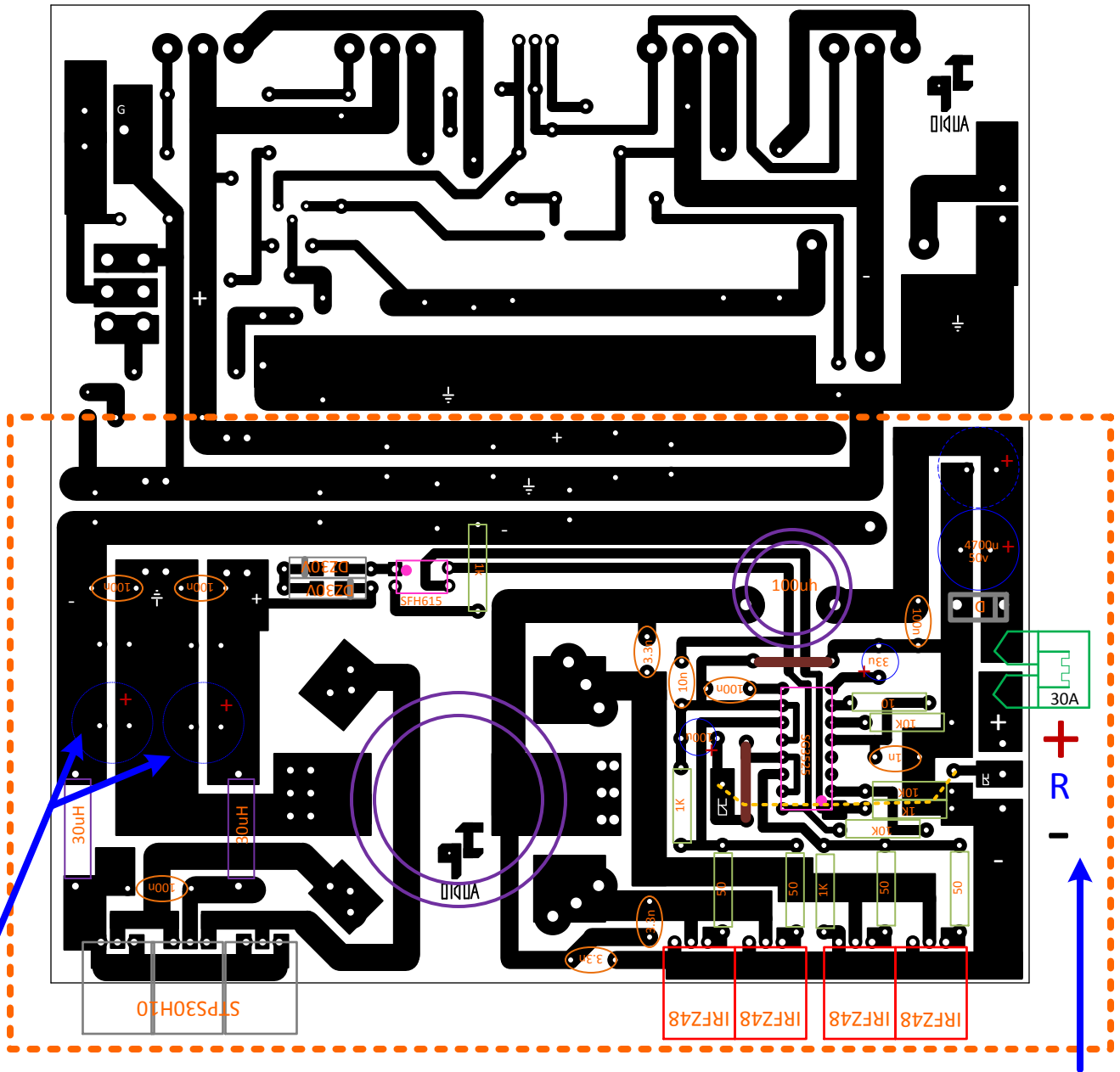
de el otro lado exactamente el mismo procedimiento , a diferencia de que son 22 vueltas

on the other hand exactly the same procedure, except that it is 22 turns

debe ser similar a la mía
should be similar to mine



**First, the components are placed below,
only the source**

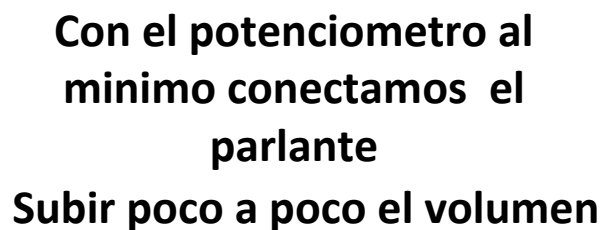


Do not place the capacitors, we must first measure the voltage first to make sure that Do not exceed the voltage we need between 30 to 37 v is good

connected to a source of pc (atx) or anyone who does not have much power

No a la bateria de el carro aun
not connected to the
battery of the car yet

After the measurements, we proceed to the jumpers and missing capacitors, and turn on



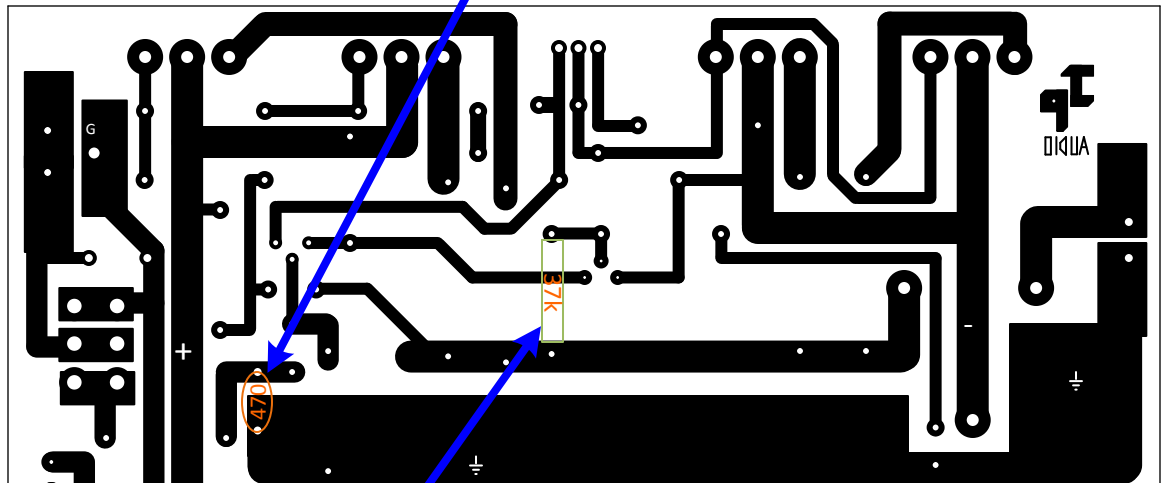
With the potentiometer to minimum connect the speaker
Up the volume gradually

**Siguiendo estos pasos el
amplificador no debe fallar
El amplificador es para bajos**

**Following these steps the
amplifier must not fail
the amplifier is for subwoofers
only**

**Como recomendacion , el
capasitor que esta marcado
abajo normalmente es de
100p si ponen uno de 470n
el amplificador solo y
absolutamente tendra a la
salida bajas frecuencias**

**As a recommendation, the
capasitor this marking is
usually below 100p if you put a
470n amp single and absolutely
will have to lower output
frequencies**



**Al hacer esto la potencia
disminulle un poco , por lo
tanto tenemos que colocar
en lugar de 30k la
reemplasamos por una de
37k**

**low power and to compensate
replace the 30k resistor one of
37k**