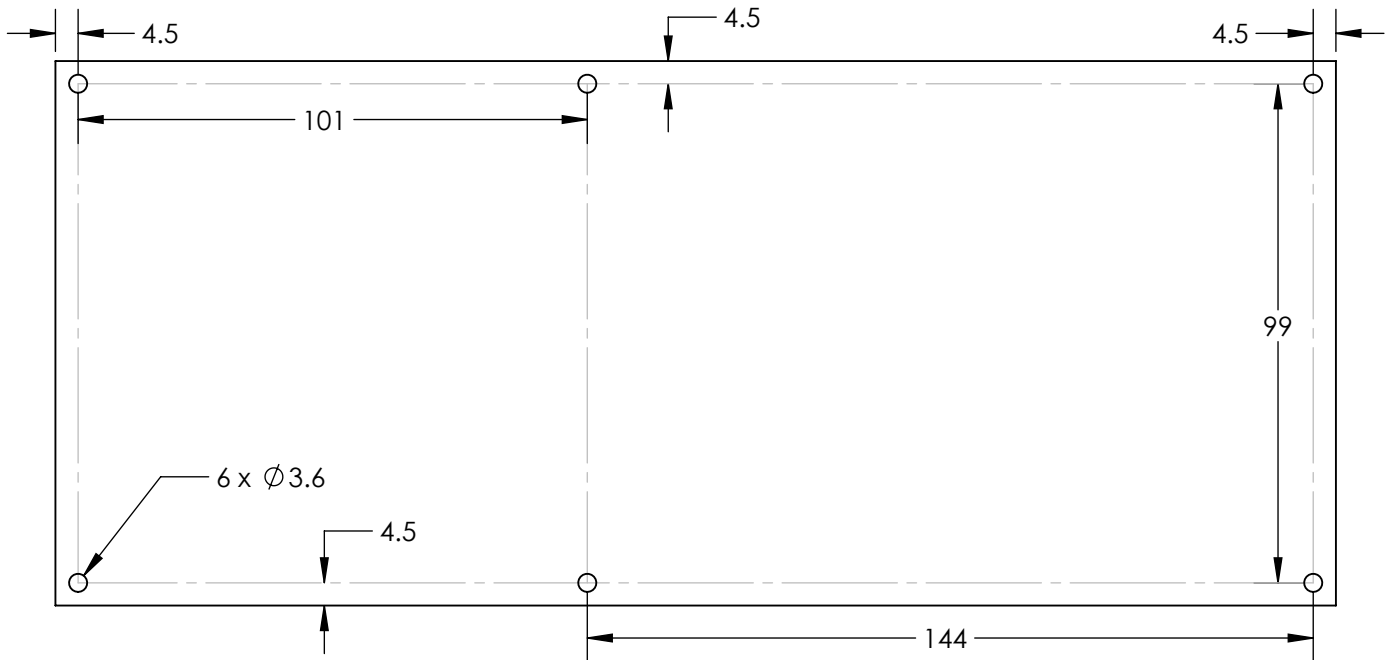
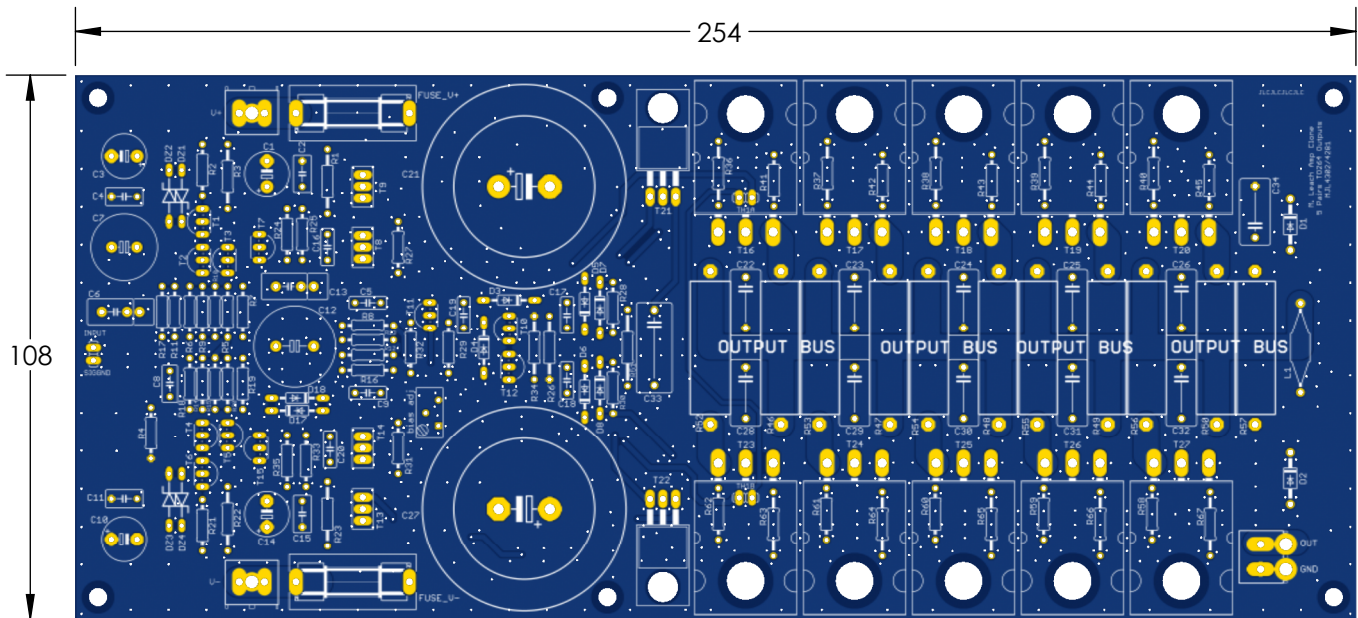
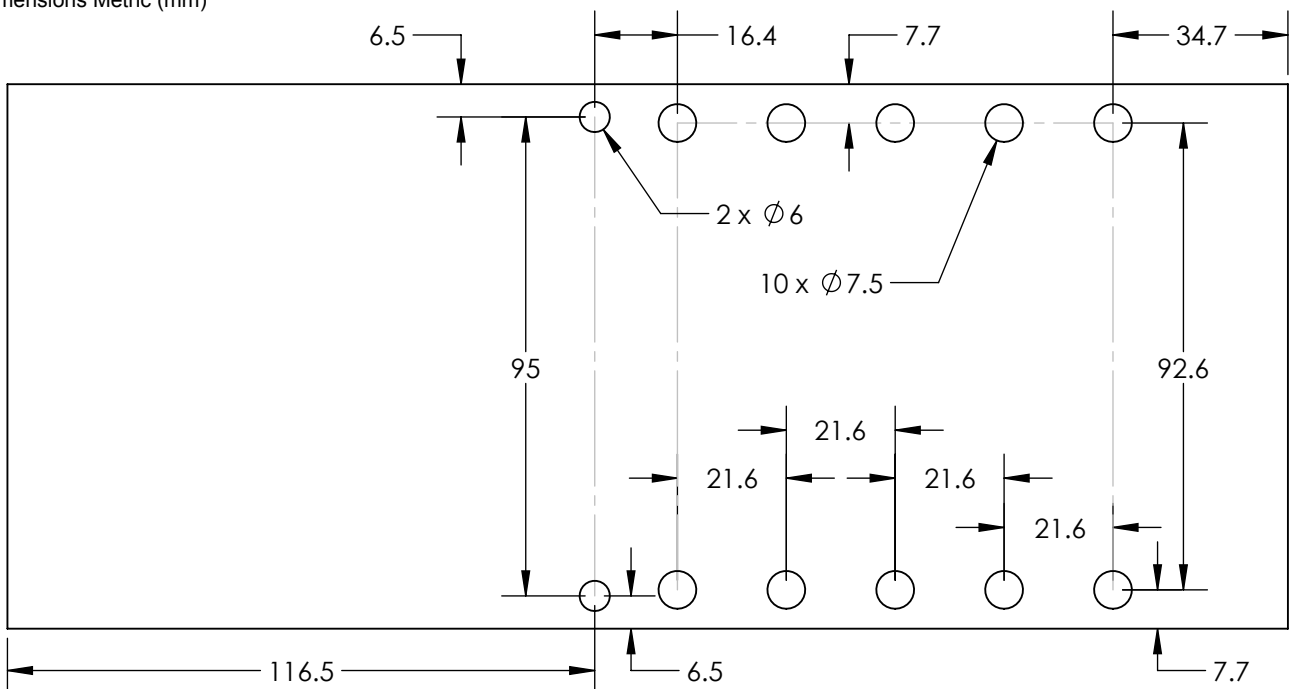
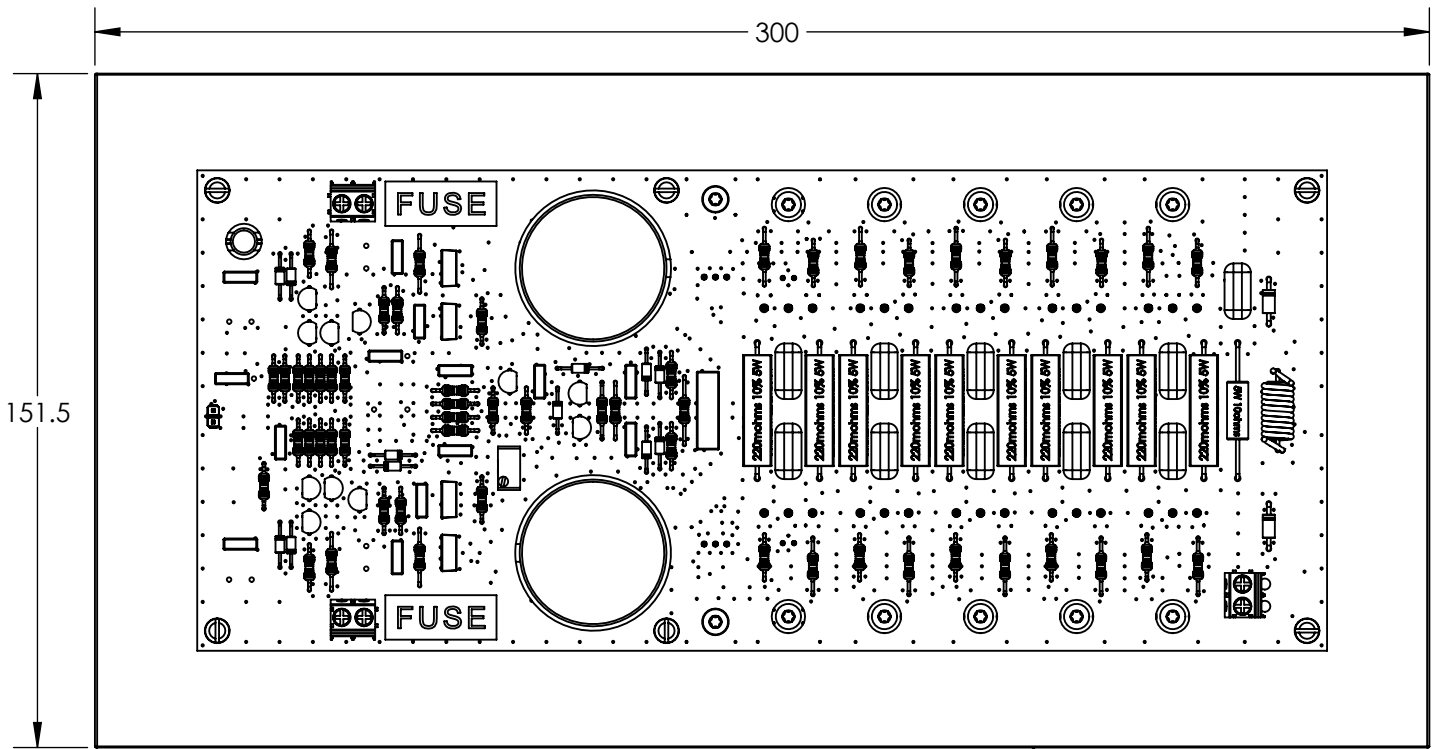


Holes in PCB

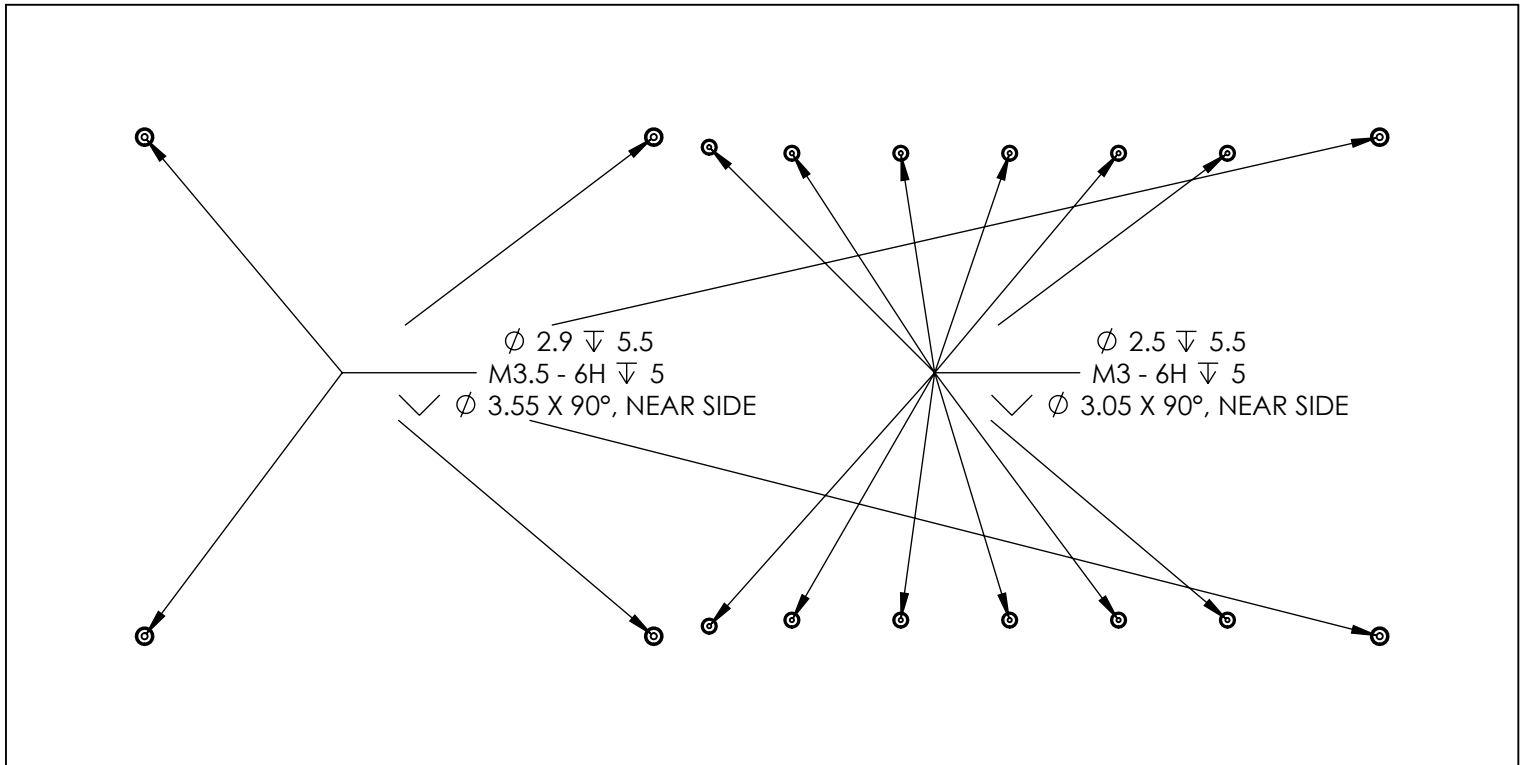


Dimensions Metric (mm)



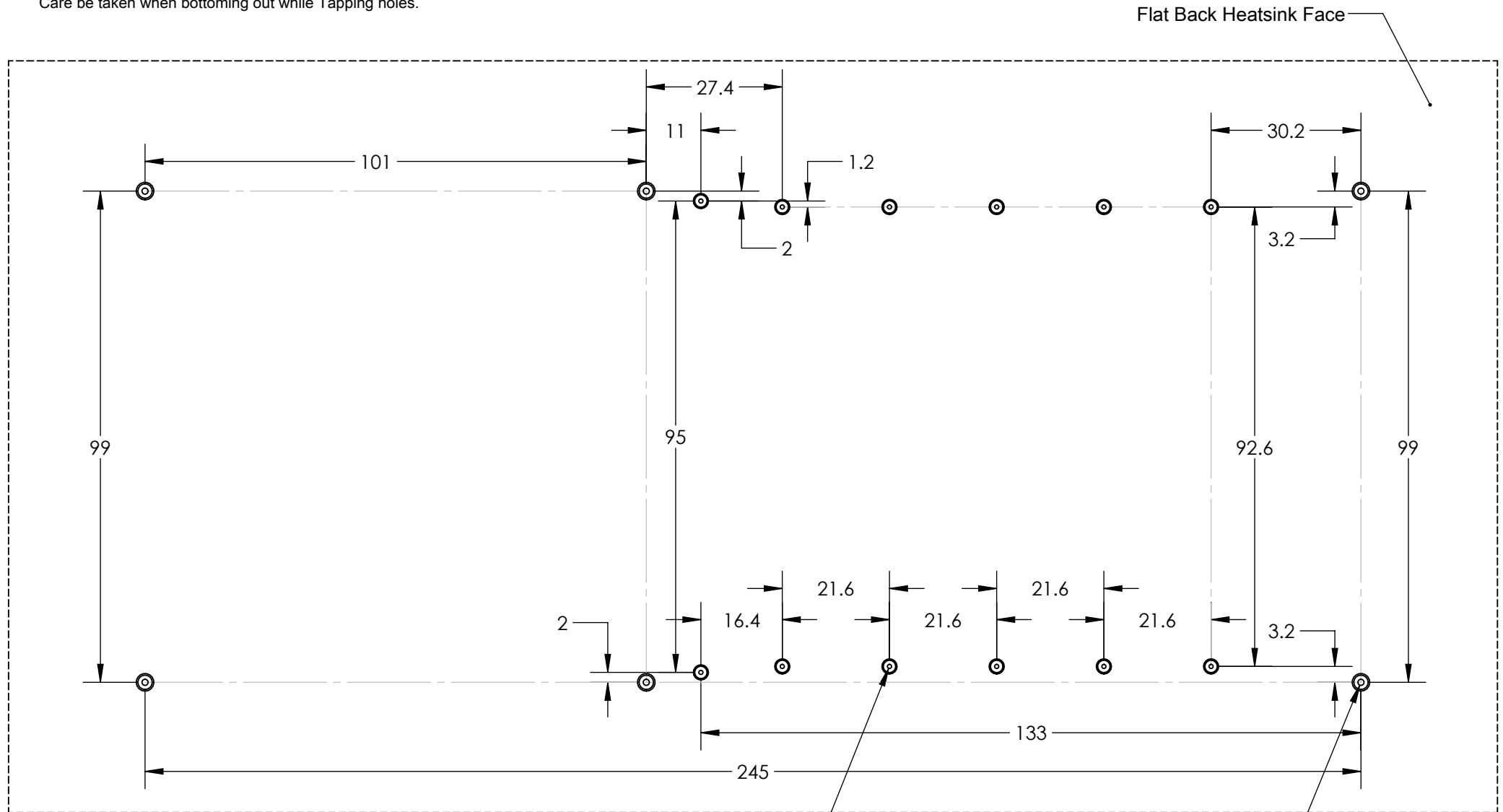


Example based on Conrad Heatsink model MF30-151.5 Flat Back



Drilling pattern based on centered position on a Conrad Heatsink Flat Back Model MF30-151.5

Heatsink main plate is 6mm thick. Drill to about 5.5mm deep to avoid breaking through.
Care be taken when bottoming out while Tapping holes.



Drilling pattern not referenced to the heatsink edges.
Can easily be applied to any other HS models.

12X $\varnothing 2.5 \nabla 5.5$
M3 - 6H $\nabla 5$
✓ $\varnothing 3.05 \times 90^\circ$, NEAR SIDE
10 x TO264
2 x TO220

6X $\varnothing 2.9 \nabla 5.5$
M3.5 - 6H $\nabla 5$
✓ $\varnothing 3.55 \times 90^\circ$, NEAR SIDE