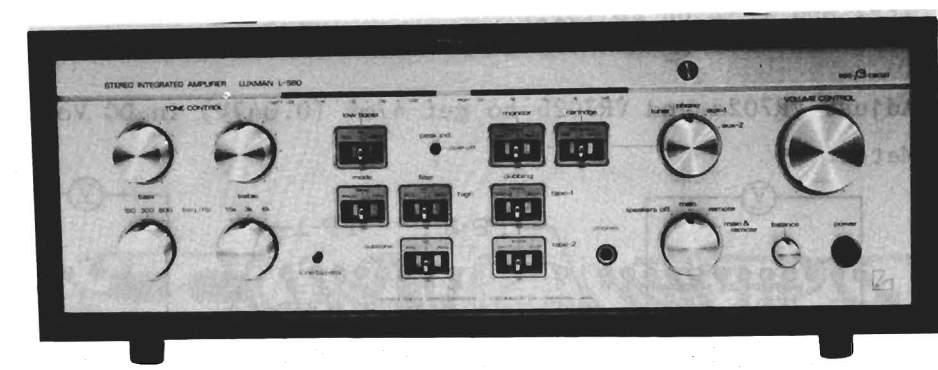


SERVICE MANUAL

SOLID STATE STEREO INTEGRATED AMPLIFIER **L580**



LUX CORPORATION, JAPAN
1-1, 1-CHOME, SHINSENRI-NISHIMACHI, TOYONAKASHI,
OSAKA, JAPAN PHONE: 06-834-0004 TELEX: J63694

ALIGNMENT PROCEDURE

(1) Setup the Amplifier

| | |
|----------------|---------------|
| VOLUME CONTROL | Minimum |
| TONE SW. | Defeat |
| FILTER SW. | Off |
| SPEAKER SW. | Main & Remote |

- (2) Turn on the power switch and wait 3 minutes for warm up.

DC. Offset Adjustment

- (1) Connect DC Voltage Meter at Speaker terminal.

- (2) Adjust on PB1311

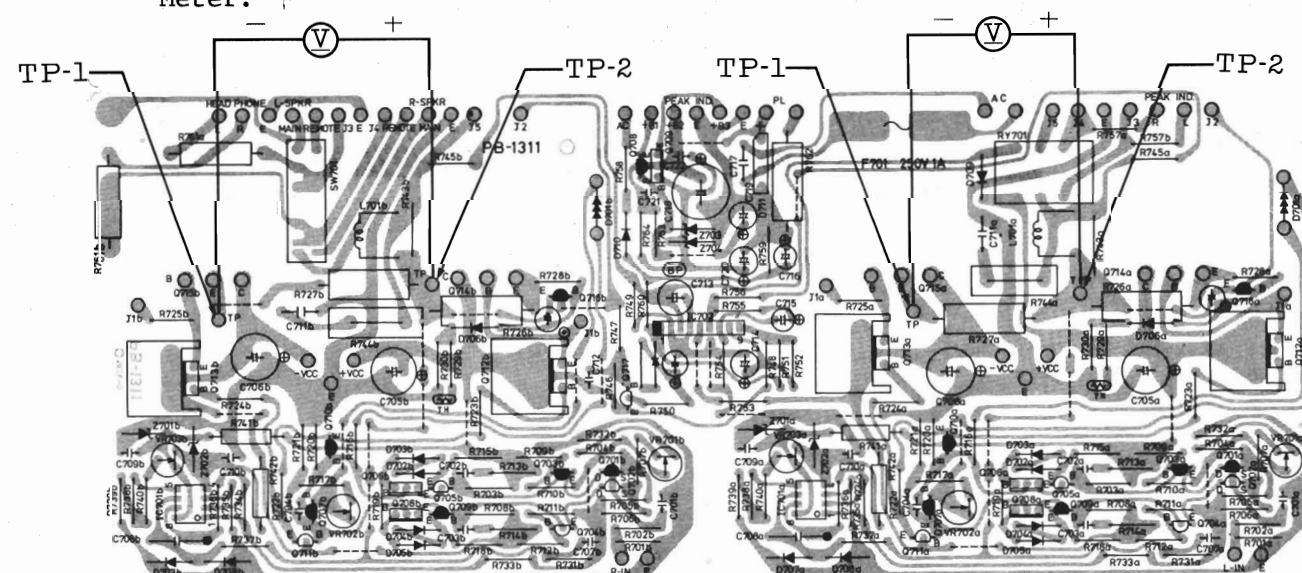
VR703a - Left channel
VR703b - Right channel

to get 0 (Zero) Volt in DC Voltage Meter.

Bias (Idle Current) Adjustment.

- (1) As shown in < Fig.-1 > Connect DC Voltage Meter between TP-1 and TP-2 on PB-1311.

- (2) Adjust VR702a and VR702b to get 47mV (0.047V) in DC Voltage Meter.



< Fig.-1 >

Noise Adjustment for Power Amplifier

- (1) Connect AC Voltage Meter at Speaker terminal.

- (2) Adjust VR701a and VR701b to get minimum Value in AC Voltage Meter.

- (3) After the adjustment, make sure that Vol. Positions of VR701a and VR701b Stay with in ± 60 degree of the Center Position.

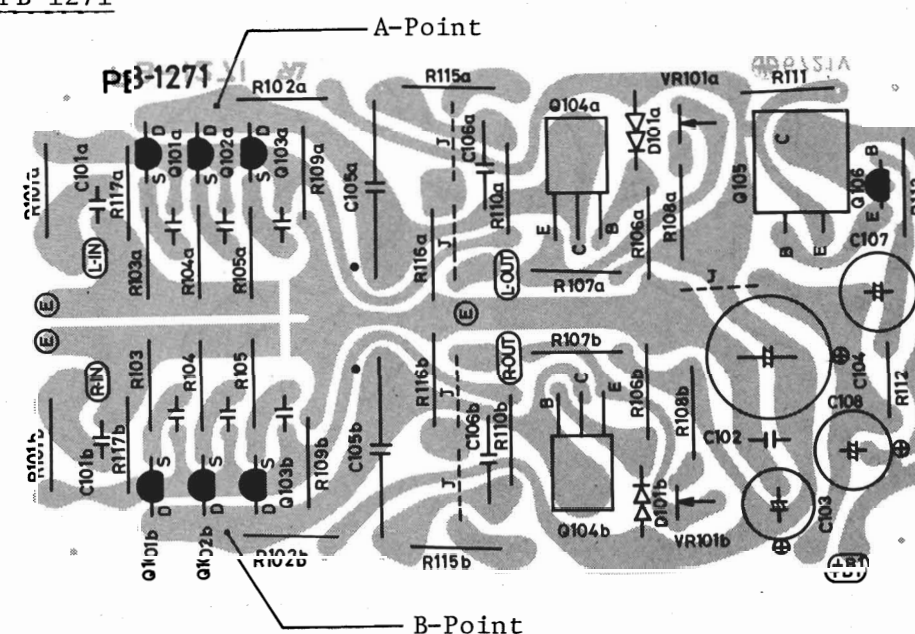
- (4) If the Vol. Positions stay outside ± 60 degree of the center position, add a resistor 2.0 - 3.0K ohm in Parallel to R703ab or R708ab (470 ohm).

Adjustment of Drain Voltage of Head Amplifier (Pre-Pre Amp)

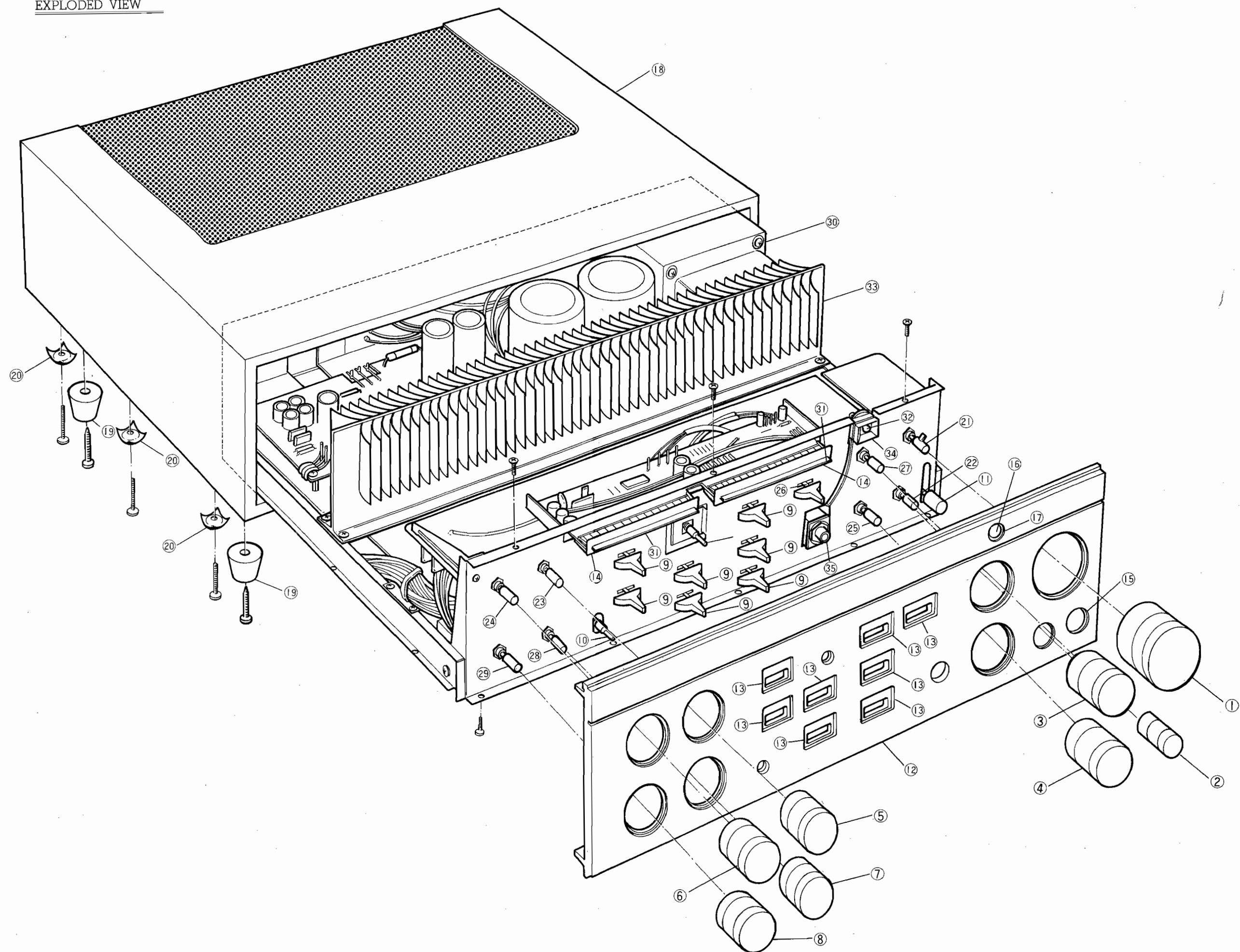
- (1) Adjust VR101b to get 9 Volt at A-Point on PB1271
(See Fig. -3).

- (2) Adjust VR101a to get 9 Volt at B-Point on PB1271
(See Fig. -3).

PB-1271



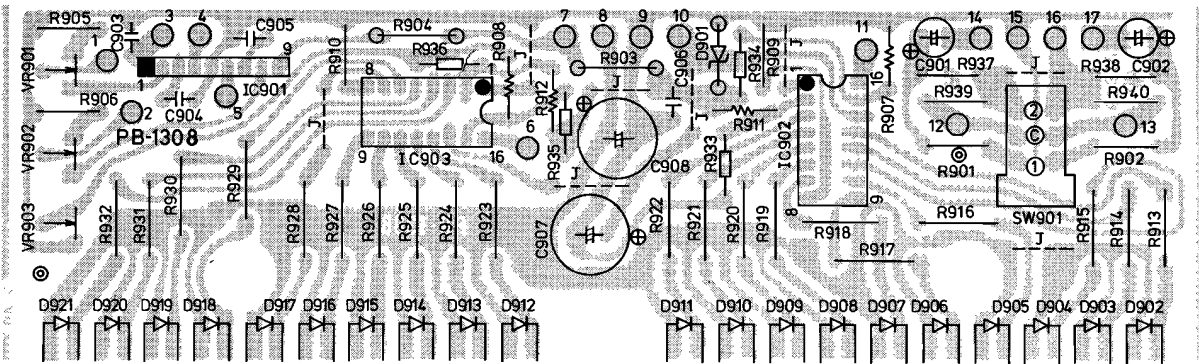
< Fig.-3 >



Power Indicators Level Adjust

- (1) Put 1 KHZ sine wave into the tuner input with the Volume at Maxmum.
- (2) Adjust the input level to obtain 28.3V at the output level.
- (3) Adjust the VR901 and VR902 on the PB1308 so that the 100W indicator L.E.D. should light up.
- (4) Adjust the input Level to get 0.4V at the output level.
- (5) Adjust the VR903 on the PB1308 to let only the 0.02W indicator LED illuminate at the left channel.
- (6) Again Set the Output at 28.3V, and adjust the VR901 to illuminate the 100W LED.
- (7) Repeat the step (3) - (6) to let the output level corresponds to the indicator of LED'S without touching the VR902.

PB-1308



< Fig.-2 >

REPLACEMENT PARTS LIST...(Exploded View)

| REF. NO. | STOCK NO. | DESCRIPTION |
|-----------------------|-----------|---------------------------|
| < Knob > | | |
| 1 | WH1096 | Volume Control |
| 2 | WH1098 | Balance Control |
| 3 | WH1097 | Input Selecto |
| 4 | WH1097 | Speaker Selector |
| 5 | WH1097 | Treble Control |
| 6 | WH1097 | Bass Control |
| 7 | WH1097 | Treble Turnover |
| 8 | WH1097 | Bass Turnover |
| 9 | WJ1121 | Lever Switch |
| 10 | WJ1127 | Tone Bypass, Power Ind. |
| 11 | WJ1125 | Power Switch |
| < Front Panel Ass'y > | | |
| 12 | WA1195 | Front Panel |
| 13 | WJ1123 | Escutcheon (Lever SW.) |
| 14 | WJ1121 | (L.E.D.) |
| 15 | WE1051 | Protector (Power SW.) |
| 16 | WG1004 | Pilot Lamp Cover |
| 17 | WG1011 | Pilot Lamp Acrylic |
| < Wooden Case Ass'y > | | |
| 18 | WB1081 | Wooden Case |
| 19 | WN1018 | Foot |
| 20 | UR1125 | Fixing Metal |
| < Variable Resistor > | | |
| 21 | RV0256 | Volme Cont. |
| 22 | RV0231 | Balance Cont. |
| 23 | RV0233 | Treble Cont. |
| 24 | RV0233 | Bass Cont. |
| < Switch > | | |
| 25 | SR0126 | Speaker Selector (Rotary) |
| 26 | SZ0126R | (Wire) |
| | SS0126R | (SW. Slide) |
| 27 | SL0053 | Phono Selector (Lever) |
| | SZ0053L | (Wire) |
| 28 | SS0053 | (SW. Slide) |
| | SR0125 | Input Selector |
| 29 | SR0128 | Treble Turnover |
| SW501 | SR0128 | Bass Turnover |
| SW503 | SL0051 | Tape Monitor |
| SW502 | SL0052 | Dubbing Tape-1 |
| SW403 | SL0052 | Tape-2 |
| SW402 | SL0050 | High Cut Filter |
| SW404 | SL0050 | Subsonic Filter |
| SW401 | SL0050 | Low Boost |
| SW603 | SL0050 | Mode |
| SW002 | SP0129 | Tone by Pass |
| SW001 | SP0161 | Power Indicator |
| SW003a,b | SP0063 | Power Switch |
| | SS0014 | Signal Processing |

| REF. NO. | STOCK NO. | DESCRIPTION |
|-----------------------|-----------|---------------------------|
| < Power Transformer > | | |
| 30 | PT2460A | P2460A (U) |
| 30 | PT2460E | P2460E (E) |
| < Indicator > | | |
| 31 | TD0134 | Output Level TLR205 (LED) |
| 32 | AL0039 | Pilot Lamp |
| 33 | BE1073 | Heat Shink |
| 34 | WZ0002 | Holder Lamp. |
| 35 | AJ0014 | Head Phon Jack |
| < Rear Panel > | | |
| | UC1169 | Rear Panel (U) |
| | UC1181 | (E) |
| | AC0050 | AC Outlet (U) |
| | AC0010 | (E) |
| | BU0033 | Bushing, Power Cord (U) |
| | BU0039 | (E) |
| < Power Cord > | | |
| | BK0019 | UP-720-001 (120V) (U) |
| | BK0029 | 1337R (220V) (E) |
| < Terminal > | | |
| | AT0110 | Speaker |
| | AT0128 | MM.MC-1, MC-2 |
| | AT0127 | Tuner |
| | AT0128 | AUX-1, AUX-2 |
| | AT0128 | Tape-1 (Rec Out, Moni.) |
| | AT0128 | Tape-2 (Rec Out, Moni.) |
| | AT0128 | Processor (From, to.) |
| | AG0063 | GND |
| | AS0002 | DIN (E) |
| | | |

E: 220V (with Line Voltage Selectors)

U: 120V Only

Replacement Parts List ... (P.C.B.)

REMARKS

Capacitor: My...Mylar, El...Electrolitic, St...Styrol, Ce...Ceramic
Mi...Mica, Ta...Tantalum, Lp...Line pass (AC Cap.)
Tm...Trimmer, Ac...AC Capacitor, Fi...Film Cap.

Resistor: Rd...Carbon, Rc...Cement, Rm...Metal Film, Rf...Flame proof
Ro...Oxid Metal,
+5%, 0.25W, unless specified otherwise.

PB-1271 Head Amp. (Pre-Pre Amplifier)

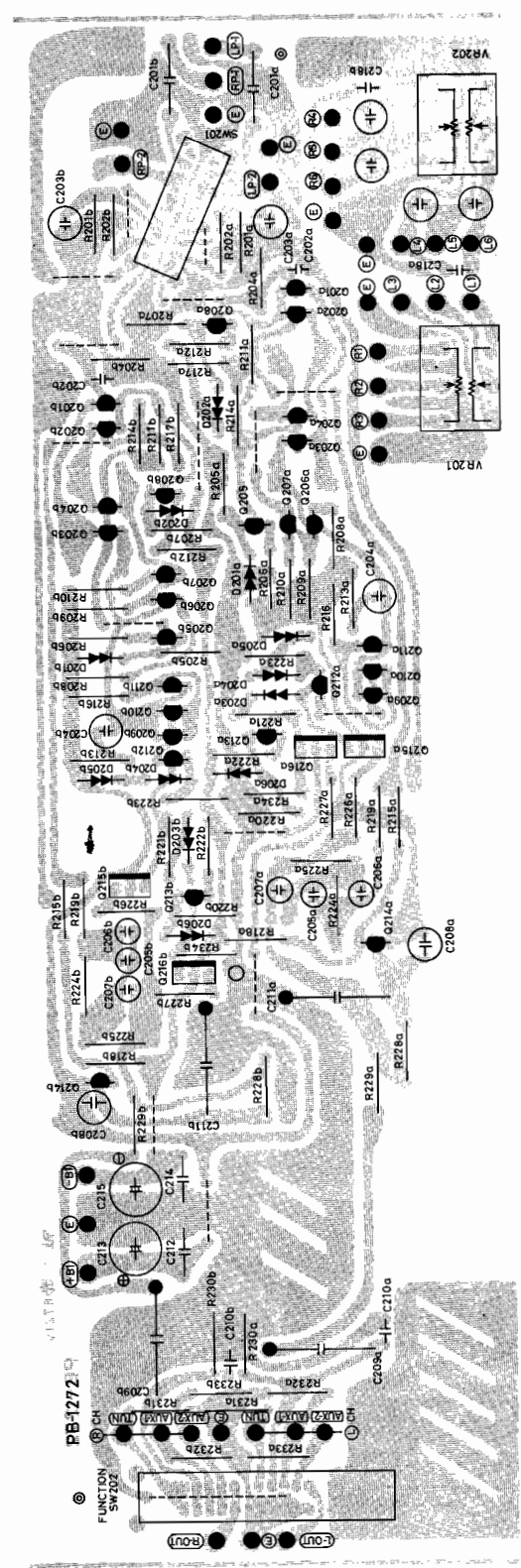
| SYMBOL NO. | PARTS NO. | DESCRIPTION |
|------------|-----------|--------------------------------------|
| C101AB | CQ0267 | CAPACITOR 100pF 50WV St |
| C102 | CQ0012 | CAPACITOR 0.027μF 50WV My |
| C104 | CE0846 | CAPACITOR 470μF 35WV E1 |
| C105AB | CE2042 | CAPACITIR 47μF 50WV E1 |
| C107 | CE0854 | CAPACITOR 10μF 50WV E1 |
| C108 | CE0843 | CAPACITOR 100μF 35WV E1 |
| Q102AB | TF0027 | FET 2SK147-GR-PA1R |
| Q103AB | TF0027 | FET 2SK147-GR-PA1R |
| Q104AB | TR0286 | TRANSISTOR 2SB649 |
| Q105 | TR5012 | TRANSISTOR 2SD880 |
| Q106 | TR5004 | TRANSISTOR 2SC2240 |
| R101AB | RD1518 | RESISTOR 2.2 OHM 0.5W +/-5% |
| R102AB | RD0030 | RESISTOR 10K OHM |
| R104AB | RD1531 | RESISTOR 6.8 OHM 0.5W +/-5% |
| R105AB | RD1531 | RESISTOR 6.8 OHM 0.5W +/-5% |
| R106AB | RD0035 | RESISTOR 4.7K OHM |
| R107AB | RD0362 | RESISTOR 220 OHM 0.5W +/-5% |
| R108AB | RD0061 | RESISTOR 47 OHM |
| R109AB | RD0032 | RESISTOR 8.2K OHM |
| R110AB | RD0133 | RESISTOR 560 OHM 0.5W +/-5% |
| R112 | RD0021 | RESISTOR 56K OHM |
| R113 | RD0035 | RESISTOR 4.7K OHM |
| R115AB | RD0139 | RESISTOR 100 OHM 0.5W +/-5% |
| R116AB | RD0013 | RESISTOR 220K OHM |
| R117AB | RD0056 | RESISTOR 100 OHM |
| V101AB | RT0094 | SEMI FIXED RESISTOR 100 OHM(B) CR19R |

PB-1272B Equalizer Amp.

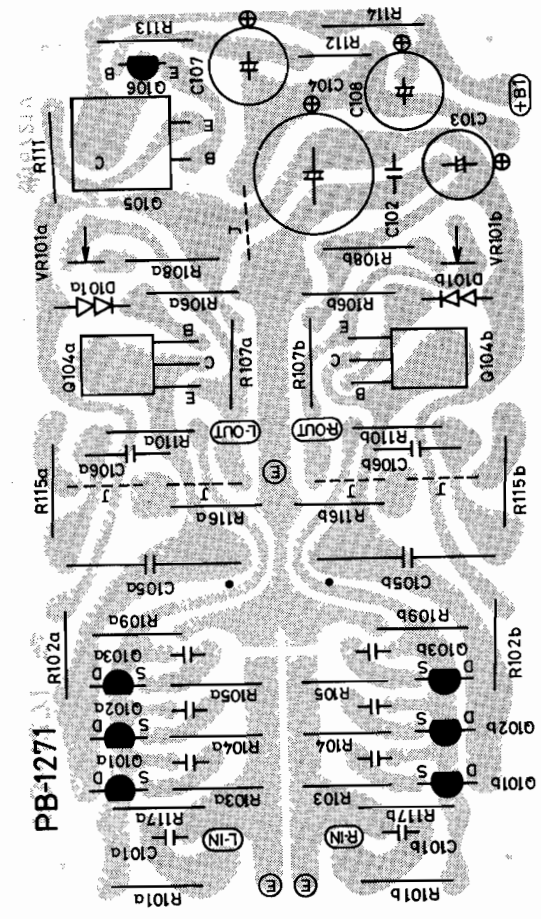
| | | |
|--------|--------|----------------------------|
| C201AB | CQ0953 | CAPACITOR 1μF 100WV My |
| C202AB | CM0127 | CAPACITOR 56pF 500WV Mi |
| C203AB | CQ0267 | CAPACITOR 100pF 50WV St |
| C204AB | CQ0258 | CAPACITOR 6800pF 50WV St |
| C205AB | CQ1204 | CAPACITOR 0.22pF 1000WV St |
| C206AB | CQ0267 | CAPACITOR 100pF 50WV St |
| C207AB | CQ1202 | CAPACITOR 6400pF 50WV St |
| C208AB | CQ0170 | CAPACITOR 470pF 50WV St |
| C209AB | CQ0954 | CAPACITOR 2.2μF 100WV My |
| C210AB | CQ0267 | CAPACITOR 100pF 50WV St |
| C211AB | CQ0954 | CAPACITOR 2.2μF 100WV My |
| C212 | CQ0954 | CAPACITOR 2.2μF 100WV My |
| C213 | CE0860 | CAPACITOR 330μF 50WV E1 |

| SYMBOL NO. | PARTS NO. | DESCRIPTION |
|------------|-----------|---------------------------|
| C214 | CQ0954 | CAPACITOR 2.2μF 100WV My |
| C215 | CE0860 | CAPACITOR 330μF 50WV E1 |
| C216AB | CQ0258 | CAPACITOR 6800pF 50WV St |
| C217AB | CQ0258 | CAPACITOR 6800pF 50WV St |
| C218AB | CQ0031 | CAPACITOR 0.033μF 50WV My |
| D202AB | TV0030 | VARISTOR KB265C4 |
| D203AB | TV0030 | VARISTOR KB265C4 |
| D204AB | TV0030 | VARISTOR KB265C4 |
| D205AB | TV0030 | VARISTOR KB265C4 |
| D206AB | TV0030 | VARISTOR KB265C4 |
| Q201AB | TF0020 | FET 2SK163-L-PAIR |
| Q202AB | TF0020 | FET 2SK163-L-PAIR |
| Q203AB | TF0020 | FET 2SK163-L-PAIR |
| Q204AB | TF0020 | FET 2SK163-L-PAIR |
| Q206AB | TR0091 | TRANSISTOR 2SA836 |
| Q207AB | TR0091 | TRANSISTOR 2SA836 |
| Q208AB | TR0196 | TRANSISTOR 2SD668 |
| Q209AB | TR0091 | TRANSISTOR 2SA836 |
| Q210AB | TR0091 | TRANSISTOR 2SA836 |
| Q211AB | TR0091 | TRANSISTOR 2SA836 |
| Q212AB | TR0197 | TRANSISTOR 2SB716 |
| Q213AB | TR0090 | TRANSISTOR 2SD756 |
| Q214AB | TR0165 | TRANSISTOR 2SC1775A |
| Q215AB | TR0196 | TRANSISTOR 2SD668 |
| Q216AB | TR0192 | TRANSISTOR 2SB648 |
| R201AB | RD0051 | RESISTOR 270 OHM |
| R202AB | RD0004 | RESISTOR 1M OHM |
| R204AB | RD0022 | RESISTOR 47K OHM |
| R206AB | RD0024 | RESISTOR 33K OHM |
| R207AB | RD0024 | RESISTOR 33K OHM |
| R208AB | RD0058 | RESISTOR 82 OHM |
| R209AB | RD0041 | RESISTOR 1.5K OHM |
| R210AB | RD0058 | RESISTOR 82 OHM |
| R211AB | RD0027 | RESISTOR 18K OHM |
| R212AB | RD0055 | RESISTOR 120 OHM |
| R213AB | RD0069 | RESISTOR 10 OHM |
| R215AB | RD0309 | RESISTOR 20K OHM |
| R216AB | RD0061 | RESISTOR 47 OHM |
| R217AB | RD0049 | RESISTOR 390 OHM |
| R218AB | RD0024 | RESISTOR 33K OHM |
| R219AB | RD0047 | RESISTOR 560 OHM |
| R220AB | RD0024 | RESISTOR 33K OHM |
| R221AB | RD0061 | RESISTOR 47 OHM |
| R222AB | RD0055 | RESISTOR 120 OHM |
| R223AB | RD0020 | RESISTOR 68K OHM |
| R224AB | RD0023 | RESISTOR 39K OHM |
| R225AB | RD0009 | RESISTOR 470K OHM |
| R226AB | RD0066 | RESISTOR 18 OHM |
| R227AB | RD0066 | RESISTOR 18 OHM |
| R228AB | RD0004 | RESISTOR 1M OHM |
| R229AB | RD0052 | RESISTOR 220 OHM |
| R230AB | RD0013 | RESISTOR 220K OHM |
| R231AB | RD0004 | RESISTOR 1M OHM |
| R232AB | RD0004 | RESISTOR 1M OHM |
| R233AB | RD0004 | RESISTOR 1M OHM |
| R234AB | RD0017 | RESISTOR 100K OHM |

PB-1272



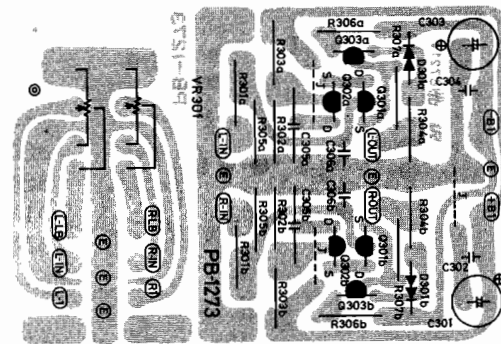
PB-1271



PB-1273B Buffer Amp.

| SYMBOL NO. | PARTS NO. | DESCRIPTION | | | |
|------------|-----------|--------------------|----------|------|----|
| C301 | CE0843 | CAPACITOR | 100μF | 35WV | E1 |
| C302 | CQ0012 | CAPACITOR | 0.027μF | 50WV | My |
| C303 | CE0843 | CAPACITOR | 100μF | 35WV | E1 |
| C304 | CQ0012 | CAPACITOR | 0.027μF | 50WV | My |
| D301AB | TV0030 | VARISTOR KB265C4 | | | |
| Q301AB | TF0020 | FET 2SK163-L-PAIR | | | |
| Q302AB | TR0174 | TRANSISTOR 2SC1345 | | | |
| R301AB | RD0052 | RESISTOR | 220 OHM | | |
| R304AB | RD0025 | RESISTOR | 27K OHM | | |
| R305AB | RD0009 | RESISTOR | 470K OHM | | |
| R306AB | RD0055 | RESISTOR | 120 OHM | | |
| R307AB | RD0069 | RESISTOR | 10 OHM | | |
| VR301 | RV0256 | VARIABLE RESISTOR | 60Kx2 | | |

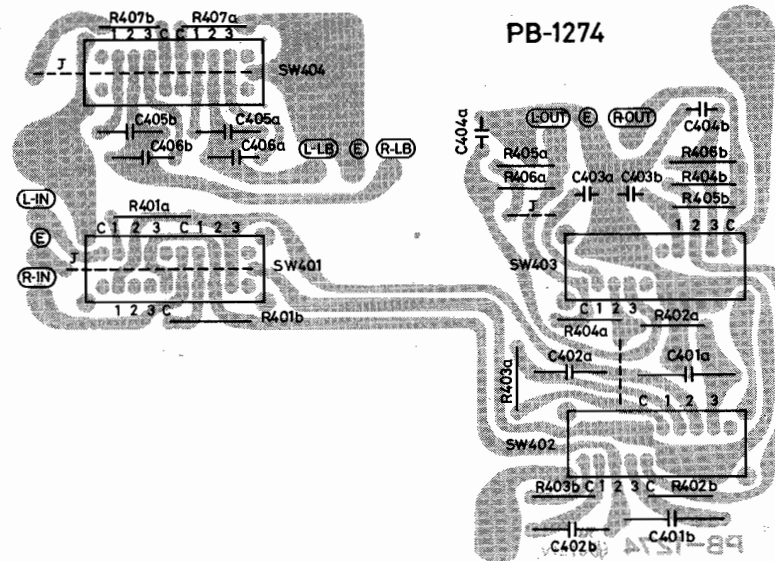
PB-1273



PB-1274

| SYMBOL NO. | PARTS NO. | DESCRIPTION | | | |
|------------|-----------|-------------|----------|-------|----|
| C401AB | CQ0693 | CAPACITOR | 0.22μF | 100WV | Fi |
| C402AB | CQ0178 | CAPACITOR | 0.12μF | 50WV | My |
| C403AB | CQ0016 | CAPACITOR | 0.01μF | 50WV | My |
| C404AB | CQ0157 | CAPACITOR | 0.018μF | 50WV | My |
| C405AB | CQ0691 | CAPACITOR | 0.1μF | 100WV | Fi |
| C406AB | CQ0693 | CAPACITOR | 0.22μF | 100WV | Fi |
| R401AB | RD0033 | RESISTOR | 6.8K OHM | | |
| R402AB | RB0254 | RESISTOR | 1M OHM | | |
| R403AB | RB0254 | RESISTOR | 1M OHM | | |
| R404AB | RB0182 | RESISTOR | 1K OHM | | |
| R405AB | RB0254 | RESISTOR | 1M OHM | | |
| R406AB | RB0254 | RESISTOR | 1M OHM | | |
| R407AB | RB0202 | RESISTOR | 6.8K OHM | | |

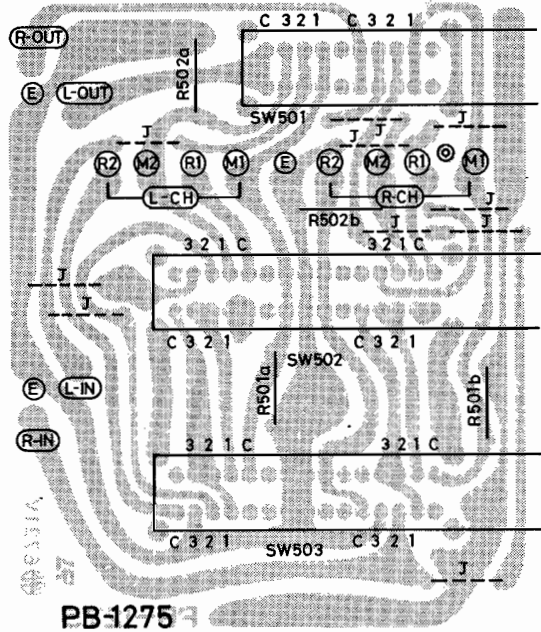
PB-1274



PB-1275

| SYMBOL NO. | PARTS NO. | DESCRIPTION | | | |
|------------|-----------|--------------|--------|--|--|
| R501AB | RB0254 | RESISTOR | 1M OHM | | |
| R502AB | RB0254 | RESISTOR | 1M OHM | | |
| SW501 | SL0051 | SWITCH LEVER | SLR43N | | |
| SW502 | SL0052 | SWITCH LEVER | SLR63N | | |
| SW503 | SL0052 | SWITCH LEVER | SLR63N | | |

PB-1275



PB-1276 Tone Cont. Amp.

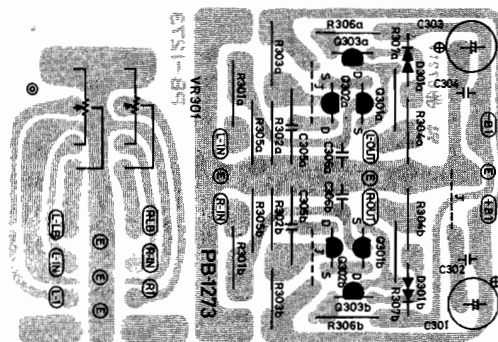
| SYMBOL NO. | PARTS NO. | DESCRIPTION | | | |
|------------|-----------|--------------------|---------|-------|----|
| C601AB | CQ0320 | CAPACITOR | 3900pF | 50WV | St |
| C602AB | CQ0320 | CAPACITOR | 3900pF | 50WV | St |
| C603AB | CQ0015 | CAPACITOR | 0.012μF | 50WV | My |
| C604AB | CQ0178 | CAPACITOR | 0.12μF | 50WV | My |
| C605AB | CQ0010 | CAPACITOR | 0.039μF | 50WV | My |
| C606AB | CM0060 | CAPACITOR | 47pF | 500WV | Mi |
| C607AB | CQ0705 | CAPACITOR | 0.12μF | 100WV | Fi |
| C608AB | CE5025 | CAPACITOR | 3.3μF | 50WV | E1 |
| C609 | CE0854 | CAPACITOR | 10μF | 50WV | E1 |
| C610 | CE0854 | CAPACITOR | 10μF | 50WV | E1 |
| C611AB | CE5025 | CAPACITOR | 3.3μF | 50WV | E1 |
| C612 | CQ0705 | CAPACITOR | 0.12μF | 100WV | Fi |
| D601AB | TV0030 | VARISTOR KB265C4 | | | |
| Q601AB | TF0020 | FET 2SK163-L-PAIR | | | |
| Q602AB | TR0174 | TRANSISTOR 2SC1345 | | | |
| Q603AB | TR0237 | TRANSISTOR 2SA949 | | | |
| Q604AB | TR0236 | TRANSISTOR 2SC2229 | | | |

PB-1275

| SYMBOL NO. | PARTS NO. | DESCRIPTION |
|------------|-----------|---------------------|
| R501AB | RB0254 | RESISTOR 1M OHM |
| R502AB | RB0254 | RESISTOR 1M OHM |
| SW501 | SL0051 | SWITCH LEVER SLR43N |
| SW502 | SL0052 | SWITCH LEVER SLR63N |
| SW503 | SL0052 | SWITCH LEVER SLR63N |

PB-1275

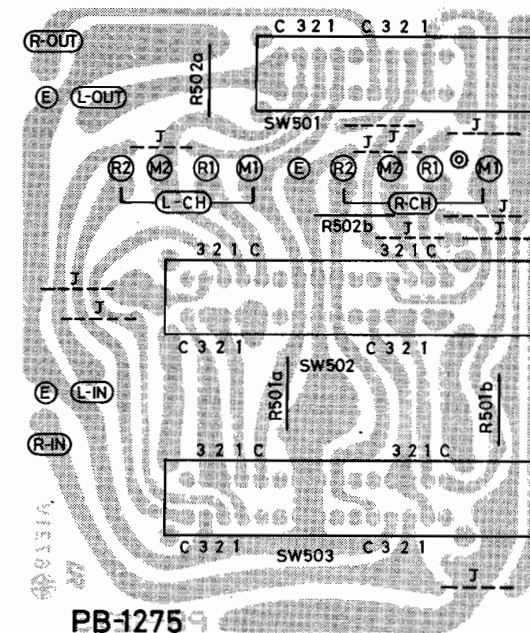
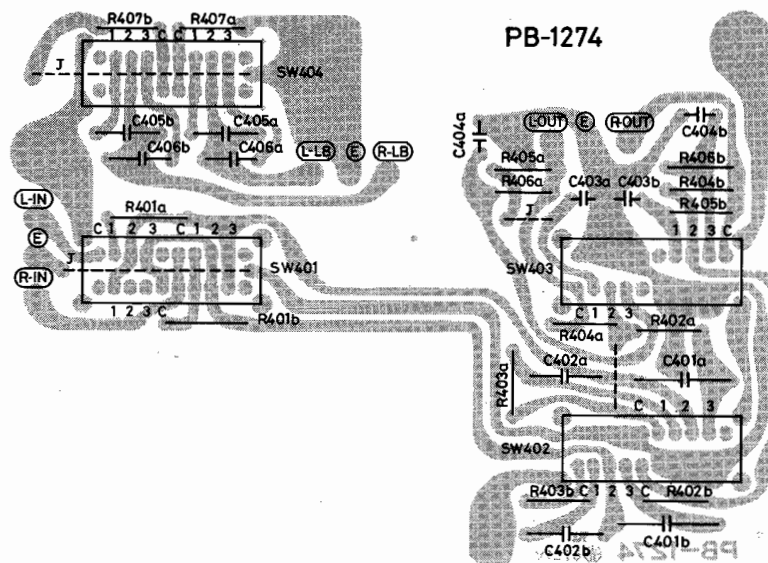
PB-1273



PB-1274

| SYMBOL NO. | PARTS NO. | DESCRIPTION | | | |
|------------|-----------|-------------|----------|-------|----|
| C401AB | CQ0693 | CAPACITOR | 0.22μF | 100WV | Fi |
| C402AB | CQ0178 | CAPACITOR | 0.12μF | 50WV | My |
| C403AB | CQ0016 | CAPACITOR | 0.01μF | 50WV | My |
| C404AB | CQ0157 | CAPACITOR | 0.018μF | 50WV | My |
| C405AB | CQ0691 | CAPACITOR | 0.1μF | 100WV | Fi |
| C406AB | CQ0693 | CAPACITOR | 0.22μF | 100WV | Fi |
| R401AB | RD0033 | RESISTOR | 6.8K OHM | | |
| R402AB | RB0254 | RESISTOR | 1M OHM | | |
| R403AB | RB0254 | RESISTOR | 1M OHM | | |
| R404AB | RB0182 | RESISTOR | 1K OHM | | |
| R405AB | RB0254 | RESISTOR | 1M OHM | | |
| R406AB | RB0254 | RESISTOR | 1M OHM | | |
| R407AB | RB0202 | RESISTOR | 6.8K OHM | | |

PB-1274

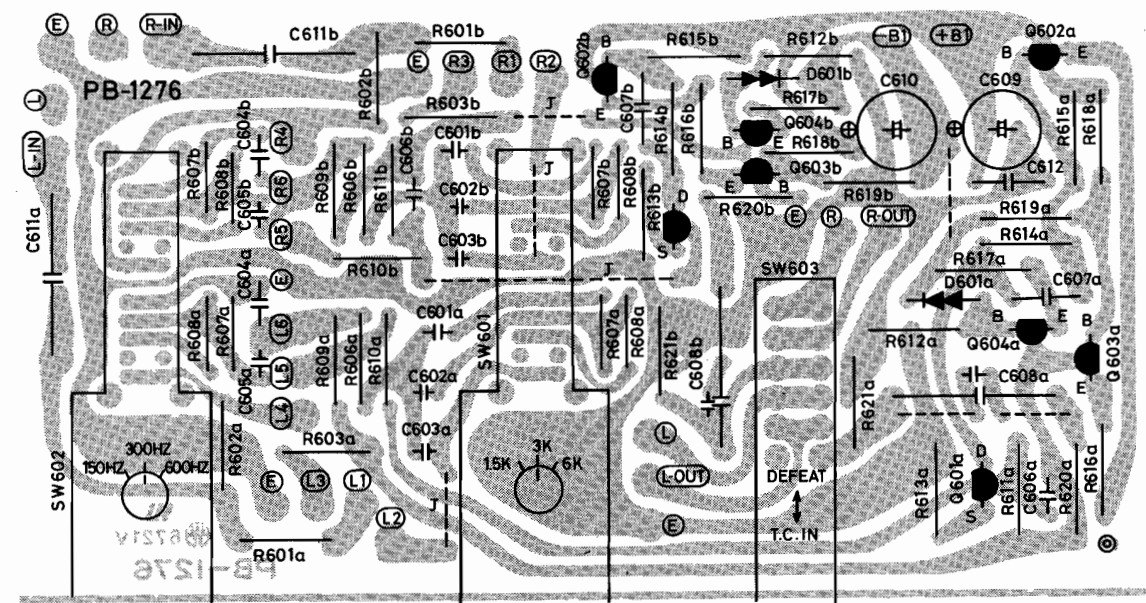


PB-1276 Tone Cont. Amp.

| SYMBOL NO. | PARTS NO. | DESCRIPTION | | | |
|------------|-----------|-------------|---------------|-------|----|
| C601AB | CQ0320 | CAPACITOR | 3900pF | 50WV | St |
| C602AB | CQ0320 | CAPACITOR | 3900pF | 50WV | St |
| C603AB | CQ0015 | CAPACITOR | 0.012μF | 50WV | My |
| C604AB | CQ0178 | CAPACITOR | 0.12μF | 50WV | My |
| C605AB | CQ0010 | CAPACITOR | 0.039μF | 50WV | My |
| C606AB | CM0060 | CAPACITOR | 47pF | 500WV | Mi |
| C607AB | CQ0705 | CAPACITOR | 0.12μF | 100WV | Fi |
| C608AB | CE5025 | CAPACITOR | 3.3μF | 50WV | El |
| C609 | CE0854 | CAPACITOR | 10μF | 50WV | El |
| C610 | CE0854 | CAPACITOR | 10μF | 50WV | El |
| C611AB | CE5025 | CAPACITOR | 3.3μF | 50WV | El |
| C612 | CQ0705 | CAPACITOR | 0.12μF | 100WV | Fi |
| D601AB | TV0030 | VARISTOR | KB265C4 | | |
| Q601AB | TF0020 | FET | 2SK163-L-PAIR | | |
| Q602AB | TR0174 | TRANSISTOR | 2SC1345 | | |
| Q603AB | TR0237 | TRANSISTOR | 2SA949 | | |
| Q604AB | TR0236 | TRANSISTOR | 2SC2229 | | |

| SYMBOL NO. | PARTS NO. | DESCRIPTION | |
|------------|-----------|---------------|-----------|
| R601AB | RD0041 | RESISTOR | 1.5K OHM |
| R602AB | RD0033 | RESISTOR | 6.8K OHM |
| R603AB | RD0041 | RESISTOR | 1.5K OHM |
| R604AB | RB0262 | RESISTOR | 2.2M OHM |
| R605AB | RB0262 | RESISTOR | 2.2M OHM |
| R606AB | RD0052 | RESISTOR | 220 OHM |
| R607AB | RB0262 | RESISTOR | 2.2M OHM |
| R608AB | RB0262 | RESISTOR | 2.2M OHM |
| R609AB | RD0033 | RESISTOR | 6.8K OHM |
| R610AB | RD0052 | RESISTOR | 220 OHM |
| R611AB | RD0002 | RESISTOR | 2.25M OHM |
| R612AB | RD0024 | RESISTOR | 33K OHM |
| R613AB | RD0052 | RESISTOR | 220 OHM |
| R614AB | RD0026 | RESISTOR | 22K OHM |
| R615AB | RD0032 | RESISTOR | 8.2K OHM |
| R616AB | RD0051 | RESISTOR | 270 OHM |
| R617AB | RD0058 | RESISTOR | 82 OHM |
| R618AB | RD0034 | RESISTOR | 5.6K OHM |
| R619AB | RD0024 | RESISTOR | 33K OHM |
| R620AB | RD0056 | RESISTOR | 100 OHM |
| R621AB | RD0021 | RESISTOR | 56K OHM |
| SW601 | SR0128 | SWITCH ROTARY | SRZW43S |
| SW602 | SR0128 | SWITCH ROTARY | SRZW43S |
| SW603 | SP0129 | SWITCH PUSH | SUF12 |

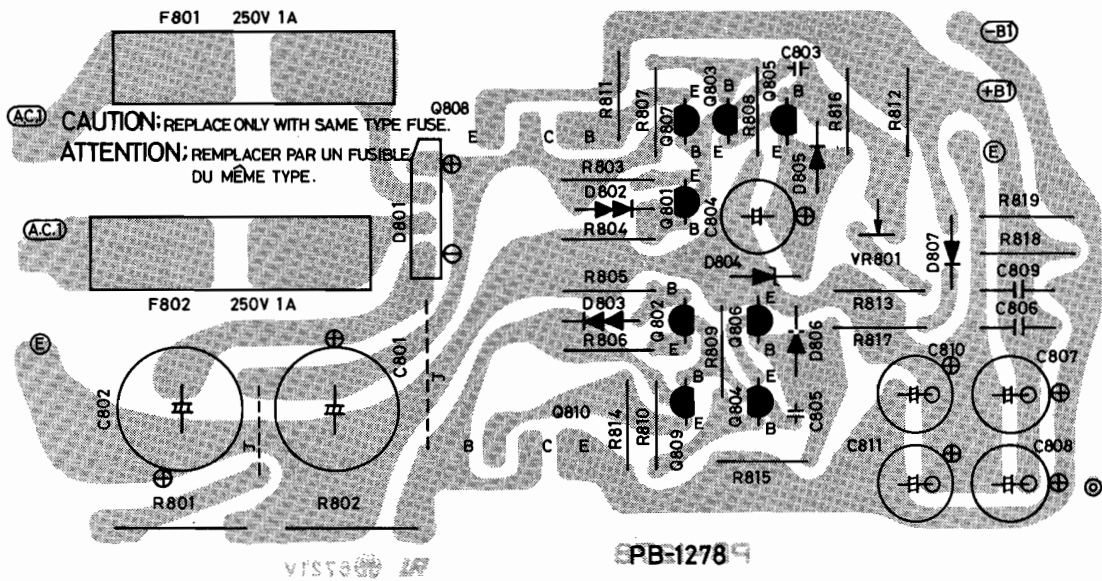
PB1276



PB-1278 Power Supply

| SYMBOL NO. | PARTS NO. | DESCRIPTION | | | |
|------------|-----------|-------------|----------|----------|----|
| C801 | CE1762 | CAPACITOR | 10000μF | 50WV | E1 |
| C802 | CE1762 | CAPACITOR | 10000μF | 50WV | E1 |
| C804 | CE0858 | CAPACITOR | 100μF | 50WV | E1 |
| C806 | CQ0691 | CAPACITOR | 0.1μF | 100WV | Fi |
| C807 | CE0855 | CAPACITOR | 22μF | 50WV | E1 |
| C808 | CE0855 | CAPACITOR | 22μF | 50WV | E1 |
| C809 | CQ0691 | CAPACITOR | 0.1μF | 100WV | Fi |
| C810 | CE0855 | CAPACITOR | 22μF | 50WV | E1 |
| C811 | CE0855 | CAPACITOR | 22μF | 50WV | E1 |
| D801 | TD0142 | DIODE | S1VB20 | | |
| D802 | TV0030 | VARISTOR | KB265C4 | | |
| D803 | TV0030 | VARISTOR | KB265C4 | | |
| Q801 | TR0237 | TRANSISTOR | 2SA949 | | |
| Q802 | TR0236 | TRANSISTOR | 2SC2229 | | |
| Q807 | TR0174 | TRANSISTOR | 2SC1345 | | |
| Q809 | TR0091 | TRANSISTOR | 2SA836 | | |
| R801 | RS2877 | RESISTOR | 4.7K OHM | 1W +/-5% | Ro |
| R802 | RS2877 | RESISTOR | 4.7K OHM | 1W +/-5% | Ro |
| R803 | RS1232 | RESISTOR | 120 OHM | 0.25W | Rf |
| R804 | RD0023 | RESISTOR | 39K OHM | | |
| R805 | RD0023 | RESISTOR | 39K OHM | | |
| R806 | RS1232 | RESISTOR | 120 OHM | 0.25W | Rf |
| R811 | RD0048 | RESISTOR | 470 OHM | | |
| R814 | RD0048 | RESISTOR | 470 OHM | | |
| R818 | RD0017 | RESISTOR | 100K OHM | | |
| R819 | RD0017 | RESISTOR | 100K OHM | | |

PB-1278

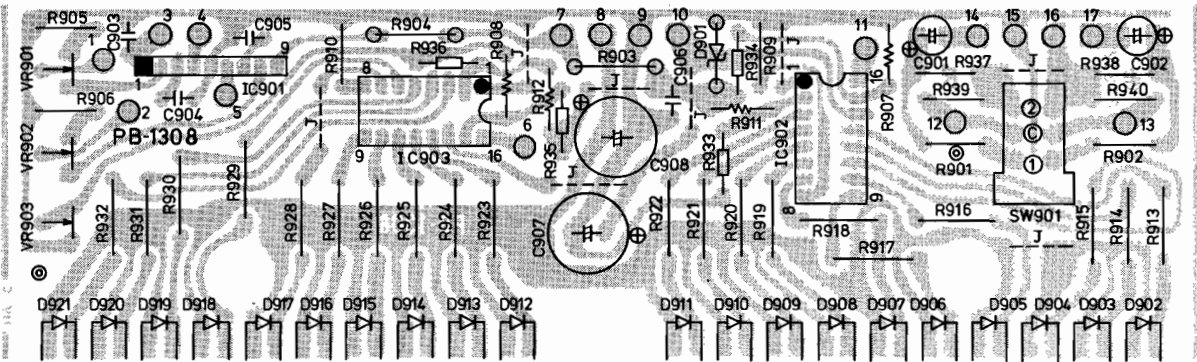


PB-1308 Power indicator

| SYMBOL NO. | PARTS NO. | DESCRIPTION | | | | |
|------------|-----------|--------------|----------|------------|----|--|
| C901 | CE0850 | CAPACITOR | 1μF | 50WV | E1 | |
| C902 | CE0850 | CAPACITOR | 1μF | 50WV | E1 | |
| C903 | CK0146 | CAPACITOR | 0.04μF | 50WV | Ce | |
| C904 | CQ0018 | CAPACITOR | 0.0056μF | 50WV | My | |
| C905 | CQ0018 | CAPACITOR | 0.0056μF | 50WV | My | |
| C906 | CK0146 | CAPACITOR | 0.04μF | 50WV | Ce | |
| C907 | CE0842 | CAPACITOR | 47μF | 35WV | E1 | |
| C908 | CE0842 | CAPACITOR | 47μF | 35WV | E1 | |
| D901 | TD0060 | DIODE ZENER | WZ061 | 6.1 V | | |
| D902 | TD0134 | TLR205 | | | | |
| D903 | TD0134 | TLR205 | | | | |
| D904 | TD0134 | TLR205 | | | | |
| D905 | TD0134 | TLR205 | | | | |
| D906 | TD0134 | TLR205 | | | | |
| D907 | TD0134 | TLR205 | | | | |
| D908 | TD0134 | TLR205 | | | | |
| D909 | TD0134 | TLR205 | | | | |
| D910 | TD0134 | TLR205 | | | | |
| D911 | TD0134 | TLR205 | | | | |
| D912 | TD0134 | TLR205 | | | | |
| D913 | TD0134 | TLR205 | | | | |
| D914 | TD0134 | TLR205 | | | | |
| D915 | TD0134 | TLR205 | | | | |
| D916 | TD0134 | TLR205 | | | | |
| D917 | TD0134 | TLR205 | | | | |
| D919 | TD0134 | TLR205 | | | | |
| D920 | TD0134 | TLR205 | | | | |
| D921 | TD0134 | TLR205 | | | | |
| IC901 | TC0101 | IC TA7318P-1 | | | | |
| IC902 | TC0102 | IC TA7612 | | | | |
| IC903 | TC0102 | IC TA7612 | | | | |
| R903 | RD0128 | RESISTOR | 1.8K OHM | 0.5W +/-5% | Rd | |
| R904 | RS1284 | RESISTOR | 150 OHM | 0.25W | Rf | |
| R905 | RB0372 | RESISTOR | 1K OHM | | | |
| R906 | RB0372 | RESISTOR | 1K OHM | | | |
| R913 | RD0460 | RESISTOR | 3.3K OHM | | | |
| R914 | RD0460 | RESISTOR | 3.3K OHM | | | |
| R915 | RD0460 | RESISTOR | 3.3K OHM | | | |
| R916 | RD0460 | RESISTOR | 3.3K OHM | | | |
| R917 | RD0460 | RESISTOR | 3.3K OHM | | | |
| R918 | RD0460 | RESISTOR | 3.3K OHM | | | |
| R919 | RD0460 | RESISTOR | 3.3K OHM | | | |
| R920 | RD0460 | RESISTOR | 3.3K OHM | | | |
| R921 | RD0460 | RESISTOR | 3.3K OHM | | | |
| R922 | RD0460 | RESISTOR | 3.3K OHM | | | |
| R923 | RD0460 | RESISTOR | 3.3K OHM | | | |
| R924 | RD0460 | RESISTOR | 3.3K OHM | | | |
| R925 | RD0460 | RESISTOR | 3.3K OHM | | | |

| SYMBOL NO. | PARTS NO. | DESCRIPTION | | | |
|------------|-----------|---------------------|------------|------------|----|
| R926 | RD0460 | RESISTOR | 3.3K OHM | | |
| R927 | RD0460 | RESISTOR | 3.3K OHM | | |
| R928 | RD0460 | RESISTOR | 3.3K OHM | | |
| R930 | RD0460 | RESISTOR | 3.3K OHM | | |
| R931 | RD0460 | RESISTOR | 3.3K OHM | | |
| R932 | RD0460 | RESISTOR | 3.3K OHM | | |
| R933 | RB0376 | RESISTOR | 1.5K OHM | | |
| R934 | RB0388 | RESISTOR | 4.7K OHM | | |
| R936 | RB0368 | RESISTOR | 680 OHM | 1/8W +/-5% | Rd |
| R941 | RB0388 | RESISTOR | 4.7K OHM | | |
| VR901 | RT0008 | SEMI FIXED RESISTOR | 1K OHM B | SR19R | |
| VR902 | RT0008 | SEMI FIXED RESISTOR | 1K OHM B | SR19R | |
| VR903 | RT0100 | SEMI FIXED RESISTOR | 2.2K OHM B | SR19R | |

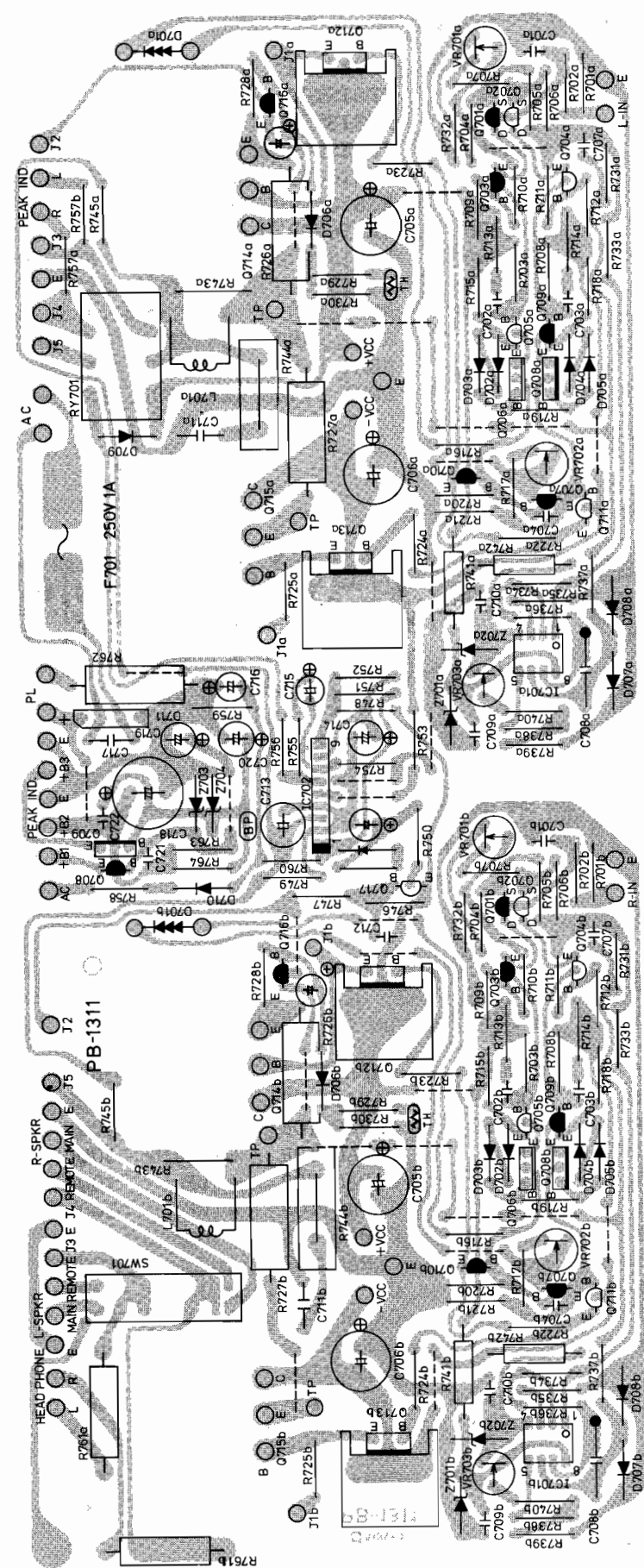
PB-1308



PB-1311 Power Amp.

| SYMBOL NO. | PARTS NO. | DESCRIPTION | | | |
|------------|-----------|-------------|----------|-------|----|
| C701AB | CM0057 | CAPACITOR | 22pF | 500WV | Mi |
| C702AB | CQ0069 | CAPACITOR | 5600pF | 50WV | St |
| C703AB | CQ0069 | CAPACITOR | 5600pF | 50WV | St |
| C704AB | CQ0026 | CAPACITOR | 0.001μF | 50WV | My |
| C705AB | CE0880 | CAPACITOR | 47μF | 100WV | E1 |
| C706AB | CE0880 | CAPACITOR | 47μF | 100WV | E1 |
| C707AB | CQ0172 | CAPACITOR | 330pF | 50WV | St |
| C708AB | CQ0953 | CAPACITOR | 1μF | 100WV | My |
| C709AB | CQ0009 | CAPACITOR | 0.047μF | 50WV | My |
| C710AB | CQ0009 | CAPACITOR | 0.047μF | 50WV | My |
| C711AB | CQ0613 | CAPACITOR | 0.1μF | 100WV | Fi |
| C712 | CQ0018 | CAPACITOR | 0.0056μF | 50WV | My |
| C713 | CE0936 | CAPACITOR | 47μF | 25WE | E1 |
| C714 | CE0820 | CAPACITOR | 47μF | 16WV | E1 |
| C715 | CE0849 | CAPACITOR | 0.47μF | 50WV | E1 |
| C716 | CE0849 | CAPACITOR | 0.47μF | 50WV | E1 |

PB-1311



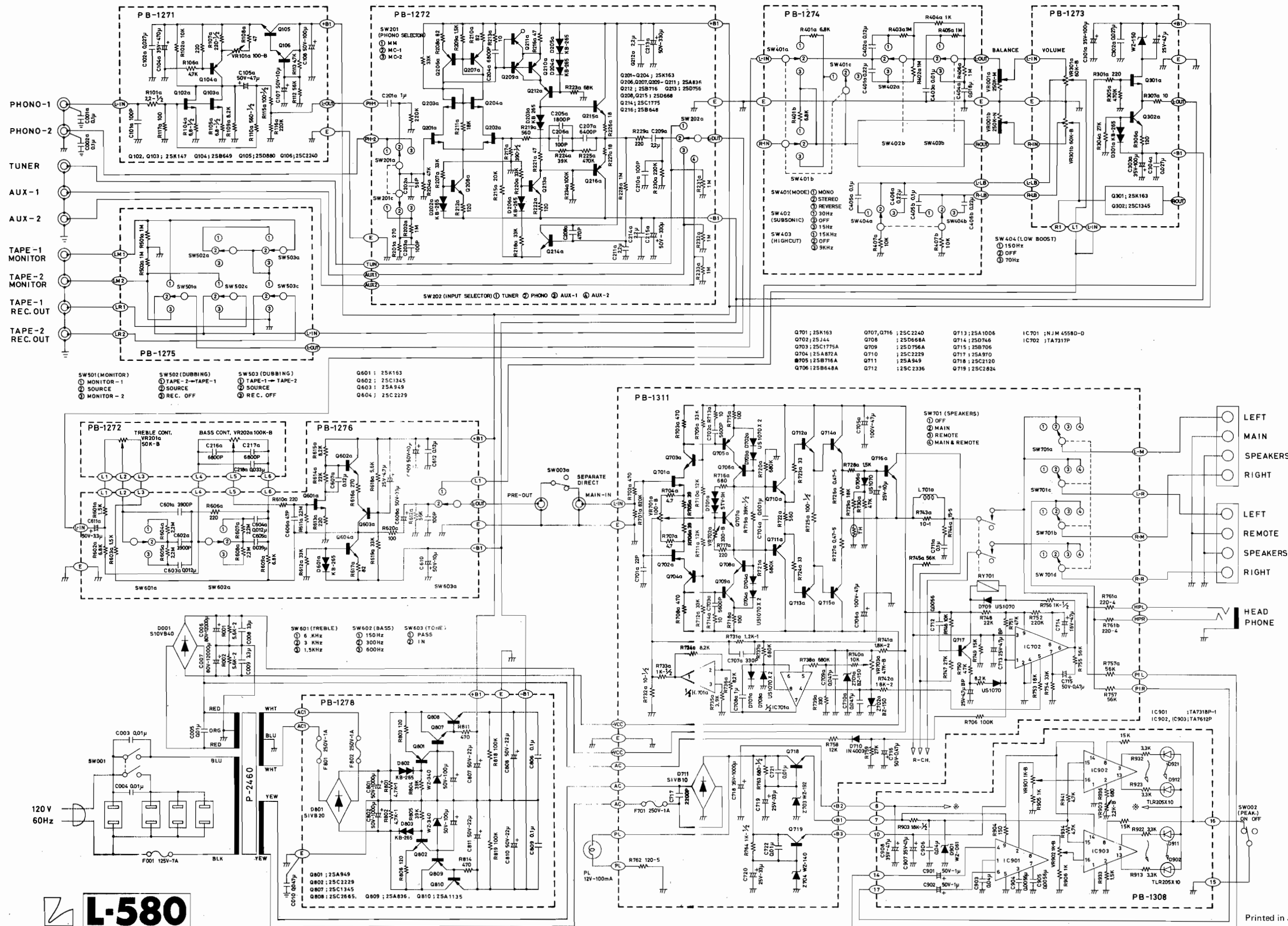
| SYMBOL NO. | PARTS NO. | DESCRIPTION | | | |
|------------|-----------|-------------|---------------|-------------|----|
| C717 | CU0008 | CAPACITOR | 2200pF | 250WV | Lp |
| C718 | CE1747 | CAPACITOR | 1000μF | 35WV | E1 |
| C719 | CE0830 | CAPACITOR | 33μF | 25WV | E1 |
| C720 | CE0830 | CAPACITOR | 33μF | 25WV | E1 |
| C721 | CK0155 | CAPACITOR | 0.01μF | 50WV | Ce |
| C722 | CK0155 | CAPACITOR | 0.01μF | 50WV | Ce |
| D702AB | TD0197 | DIODE | US1070 | | |
| D703AB | TD0197 | DIODE | US1070 | | |
| D704AB | TD0197 | DIODE | US1070 | | |
| D705AB | TD0197 | DIODE | US1070 | | |
| D706AB | TD0197 | DIODE | US1070 | | |
| D707AB | TD0197 | DIODE | US1070 | | |
| D708AB | TD0197 | DIODE | US1070 | | |
| D709 | TD0003 | DIODE | 1N4003 | | |
| D710 | TD0003 | DIODE | 1N4003 | | |
| D711 | TD0137 | DIODE | S1VB10 | | |
| IC702 | TC0172 | IC | TA7317P | | |
| IC701AB | TC0025 | IC | NJM4558DD | | |
| IC701AB | LA1020 | CHOKE-COIL | LUX-1020 | | |
| Q701AB | TF0020 | FET | 2SK163-L-PAIR | | |
| Q702AB | TF0023 | FET | 2SJ44-L-PAIR | | |
| Q703AB | TR0165 | TRANSISTOR | 2SC1775A | | |
| Q704AB | TR0218 | TRANSISTOR | 2SA872A | | |
| Q705AB | TR0293 | TRANSISTOR | 2SB716A | | |
| Q706AB | TR0208 | TRANSISTOR | 2SB648A | | |
| Q707AB | TR5004 | TRANSISTOR | 2SC2240 | | |
| Q708AB | TR0207 | TRANSISTOR | 2SD668A | | |
| Q709AB | TR0292 | TRANSISTOR | 2SD756A | | |
| Q710AB | TR0236 | TRANSISTOR | 2SC2229 | | |
| Q711AB | TR0237 | TRANSISTOR | 2SA949 | | |
| Q712AB | TR0242 | TRANSISTOR | 2SC2336 | | |
| Q713AB | TR0241 | TRANSISTOR | 2SA1006 | | |
| Q716AB | TR5004 | TRANSISTOR | 2SC2240 | | |
| Q717 | TR5005 | TRANSISTOR | 2SA970 | | |
| Q718 | TR0259 | TRANSISTOR | 2SC2120 | | |
| Q719 | TR0311 | TRANSISTOR | 2SC2824 | | |
| RY701 | AY1014 | RELAY | GZ-48HM | | |
| R701AB | RD0006 | RESISTOR | 820K OHM | | |
| R702AB | RD0048 | RESISTOR | 470 OHM | | |
| R703AB | RD0048 | RESISTOR | 470 OHM | | |
| R704AB | RD1026 | RESISTOR | 4.7 OHM | | |
| R705AB | RD0062 | RESISTOR | 39 OHM | | |
| R706AB | RD0062 | RESISTOR | 39 OHM | | |
| R707AB | RD1026 | RESISTOR | 4.7 OHM | | |
| R708AB | RD0048 | RESISTOR | 470 OHM | | |
| R709AB | RD0024 | RESISTOR | 33K OHM | | |
| R710AB | RD0029 | RESISTOR | 12K OHM | | |
| R711AB | RD0029 | RESISTOR | 12K OHM | | |
| R712AB | RD0024 | RESISTOR | 33K OHM | | |
| R713AB | RD0069 | RESISTOR | 10 OHM | | |
| R714AB | RD0069 | RESISTOR | 10 OHM | | |
| R715AB | RS1281 | RESISTOR | 100 OHM | 0.33W +/-5% | Rf |
| R716AB | RD0046 | RESISTOR | 680 OHM | | |
| R717AB | RD0052 | RESISTOR | 220 OHM | | |
| R718AB | RS1281 | RESISTOR | 100 OHM | 0.33W +/-5% | Rf |
| R719AB | RD0110 | RESISTOR | 39K OHM | 0.5W +/-5% | Rd |

| SYMBOL NO. | PARTS NO. | DESCRIPTION | | | |
|------------|-----------|---------------------|------------|-------------|----|
| R720AB | RD0007 | RESISTOR | 680K OHM | | |
| R721AB | RD0007 | RESISTOR | 680K OHM | | |
| R722AB | RS1299 | RESISTOR | 560 OHM | 0.33W +/-5% | Rf |
| R723AB | RS1269 | RESISTOR | 33 OHM | 0.33W +/-5% | Rf |
| R724AB | RS1269 | RESISTOR | 33 OHM | 0.25W +/-5% | Rf |
| R725AB | RS2512 | RESISTOR | 100 OHM | 0.5W +/-5% | Ro |
| R726AB | RG0002 | RESISTOR | 0.47 OHM | 5W +/-10% | Rc |
| R727AB | RG0002 | RESISTOR | 0.47 OHM | 5W +/-10% | Rc |
| R728AB | RD0041 | RESISTOR | 1.5K OHM | | |
| R729AB | RD0020 | RESISTOR | 68K OHM | | |
| R729AB | RD0027 | RESISTOR | 18K OHM | | |
| R730 | RD0026 | RESISTOR | 22K OHM | | |
| R730AB | RD0022 | RESISTOR | 47K OHM | | |
| R731AB | RS5028 | RESISTOR | 1.2K OHM | 1W +/-5% | Ro |
| R732AB | RD0142 | RESISTOR | 10 OHM | 0.5W +/-5% | Rd |
| R733AB | RD0354 | RESISTOR | 1K OHM | 0.5W +/-5% | Rd |
| R734AB | RD0032 | RESISTOR | 8.2K OHM | | |
| R735AB | RD0036 | RESISTOR | 3.9K OHM | | |
| R736AB | RD0032 | RESISTOR | 8.2K OHM | | |
| R737AB | RD0007 | RESISTOR | 680K OHM | | |
| R738AB | RD0007 | RESISTOR | 680K OHM | | |
| R739AB | RD0050 | RESISTOR | 330 OHM | | |
| R740AB | RD0030 | RESISTOR | 10K OHM | | |
| R741AB | RS2950 | RESISTOR | 1.8K OHM | 2.0W | Rf |
| R742AB | RS2950 | RESISTOR | 1.8K OHM | 2.0W | Rf |
| R743AB | RS2709 | RESISTOR | 10 OHM | 1W +/-5% | Ro |
| R744AB | RG0500 | RESISTOR | 15 OHM | 5W +/-10% | Rl |
| R745AB | RD0021 | RESISTOR | 56K OHM | | |
| R746 | RD0030 | RESISTOR | 10K OHM | | |
| R747 | RD0025 | RESISTOR | 27K OHM | | |
| R748 | RD0026 | RESISTOR | 22K OHM | | |
| R748 | RD0026 | RESISTOR | 22K OHM | | |
| R749 | RD0028 | RESISTOR | 15K OHM | | |
| R750 | RD0022 | RESISTOR | 47K OHM | | |
| R751 | RD0022 | RESISTOR | 47K OHM | | |
| R752 | RD0013 | RESISTOR | 220K OHM | | |
| R753 | RD0027 | RESISTOR | 18K OHM | | |
| R754 | RD0024 | RESISTOR | 33K OHM | | |
| R755 | RD0021 | RESISTOR | 56K OHM | | |
| R756 | RS2524 | RESISTOR | 1K OHM | 0.5W | Rf |
| R757AB | RD0021 | RESISTOR | 56K OHM | | |
| R758 | RD0029 | RESISTOR | 12K OHM | | |
| R759 | RD0025 | RESISTOR | 27K OHM | | |
| R760 | RD0017 | RESISTOR | 100K OHM | | |
| R761AB | RG2450 | RESISTOR | 220 OHM | 4W +/-10% | Rl |
| R762 | RG0041 | RESISTOR | 120 OHM | 5W +/-10% | Rc |
| R763 | RS2522 | RESISTOR | 680 OHM | 0.5W +/-5% | Ro |
| R764 | RS2524 | RESISTOR | 1K OHM | 0.5W | Rf |
| SW701 | SS0126R | SWITCH ROTARY | 4-4N | | |
| V701AB | RT0090 | SEMI FIXED RESISTOR | 100 OHM B | SR1PR | |
| V702AB | RT0006 | SEMI FIXED RESISTOR | 330 OHM B | SR19R | |
| V703AB | RT0025 | SEMI FIXED RESISTOR | 4.7K OHM B | SR19R | |
| Z701AB | TD0180 | DIODE ZENER BZ-150 | 15V | | |
| Z702AB | TD0180 | DIODE ZENER BZ-150 | 15V | | |
| Z703 | TD0065 | DIODE ZENER WZ-192 | 19.2V | | |
| Z704 | TD0079 | DIODE ZENER WZ140 | 14V | | |

SPECIFICATIONS

| | | |
|---|---|--|
| Power Output: | 100 watts minimum continuous per channel both channels driven into 8 ohms load, at any frequency from 20 Hz to 20,000 Hz with no more than 0.03% total harmonic distortion. | |
| Rated I.M.: | no more than 0.03% (8 ohms, 100W/ch, 60 Hz : 7 kHz = 4:1) | |
| Input Sensitivity: | phone (MM), 1.8 mV phono (MC-1) 1.8 mV (direct to EQ stage) phono (MC-2) 0.06 mV (2 ohms) 0.08 mV (40 ohms) tuner; 240 mV aux-1, -2; 240 mV main in; 240 mV | |
| Input Impedance: | phono (MM); 50 k ohms phono (MC-1); 100 ohms tuner; 40 k ohms aux-1, -2; 40 k ohms main in; 820 k ohms | |
| Signal-to Noise Ratio: (IHF-A wtd, input short-circuited) | phono (MM); better than 90dB (10mV) phono (MC-1); better than 90dB tuner; better than 100dB main in; better than 105dB | |
| Frequency Response: | phono (MM); 20Hz-20,000Hz(±0.3dB) phono (MC-1); 20Hz-20,000Hz(±0.3dB) tuner; 10Hz-100,000Hz(−1dB) aux-1, -2; 10Hz-100,000Hz(−1dB) main in; 10Hz-100,000Hz(−1dB) | |
| Tone Control: | LUX NF type with turnover frequency selector Bass Turnover Frequency: 150 Hz, 300 Hz, 600 Hz Treble Turnover Frequency: 1.5k Hz, 3k Hz, 6k Hz | |
| Preamplifier Output: | 240 mV | |
| Additional Features: | Subsonic Filter (15 Hz, off, 30 Hz), High Cut Filter (9k Hz, off 15k Hz), Low-boost Switch (70 Hz, off, 150 Hz), Tape Monitor Switch, Tape Dubbing & REC. OFF Switch, Speaker Selector Switch, Headphone Jack, Extra AC Outlet, Power Indicators. | |
| Dimensions: | 466 (W) x 378 (D) x 181 (H) mm (18-11/32" x 14-1/2" x 7-1/8") (including legs, front & rear protrusions) | |
| Weight: | Net 15.5 kgs (34.1 lbs.) Gröss 17.0 kgs (37.4 lbs.) | |

Specifications and appearance design subject to change without notice.



L-580

Printed in Japan