

1. Table of Contents (This Page)
Created on Sun Jan 8 13:40:14 2017

2. component

3. solder

4. plated-drill

5. unplated-drill

6. componentmask

7. soldermask

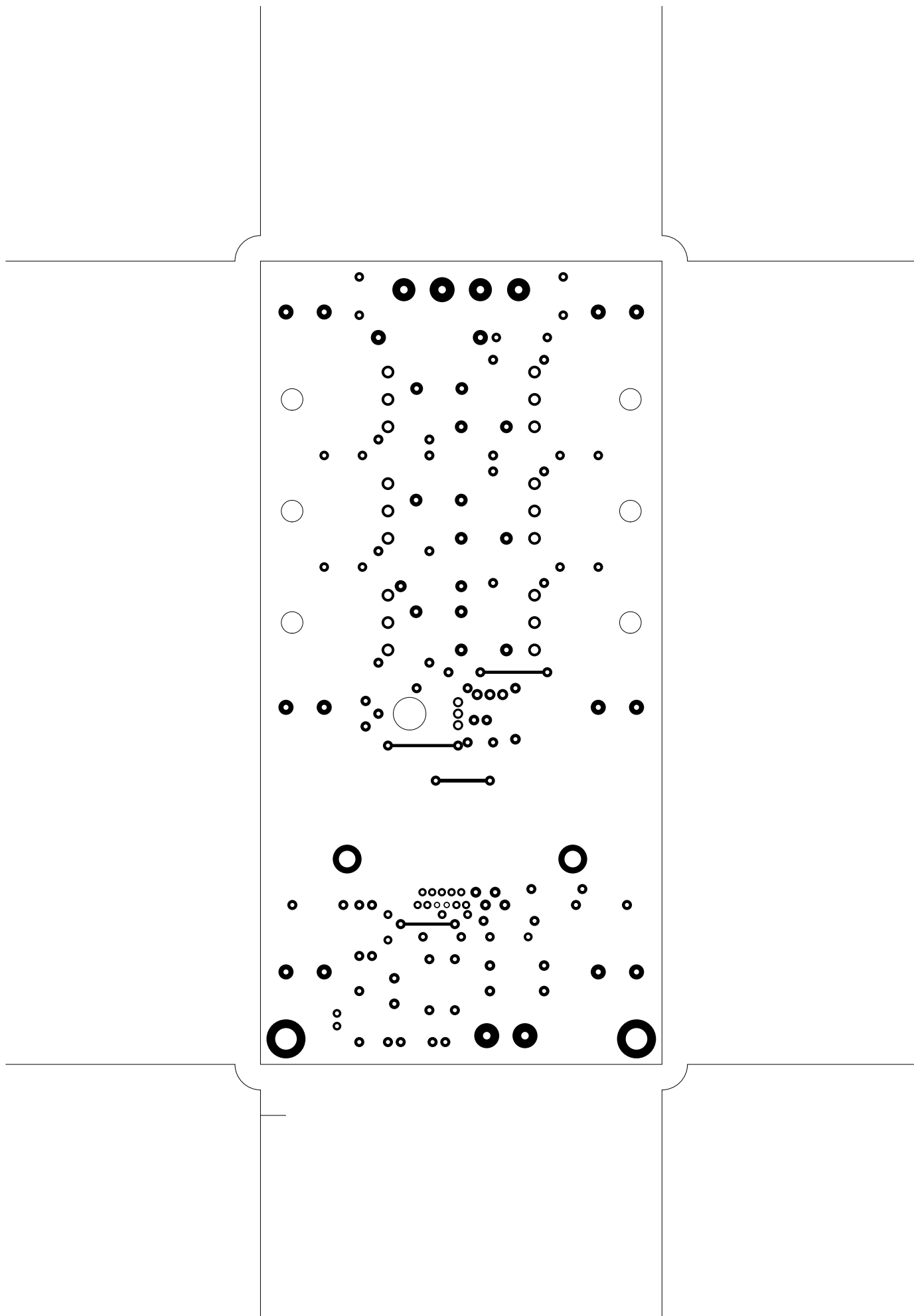
8. topsilk

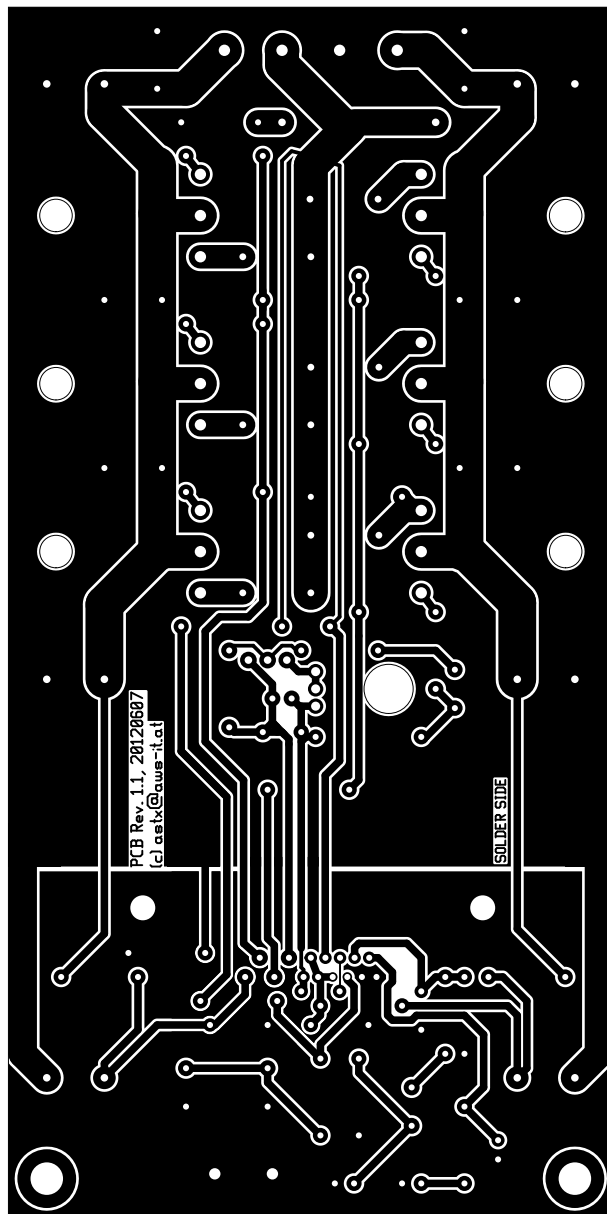
9. bottomsilk

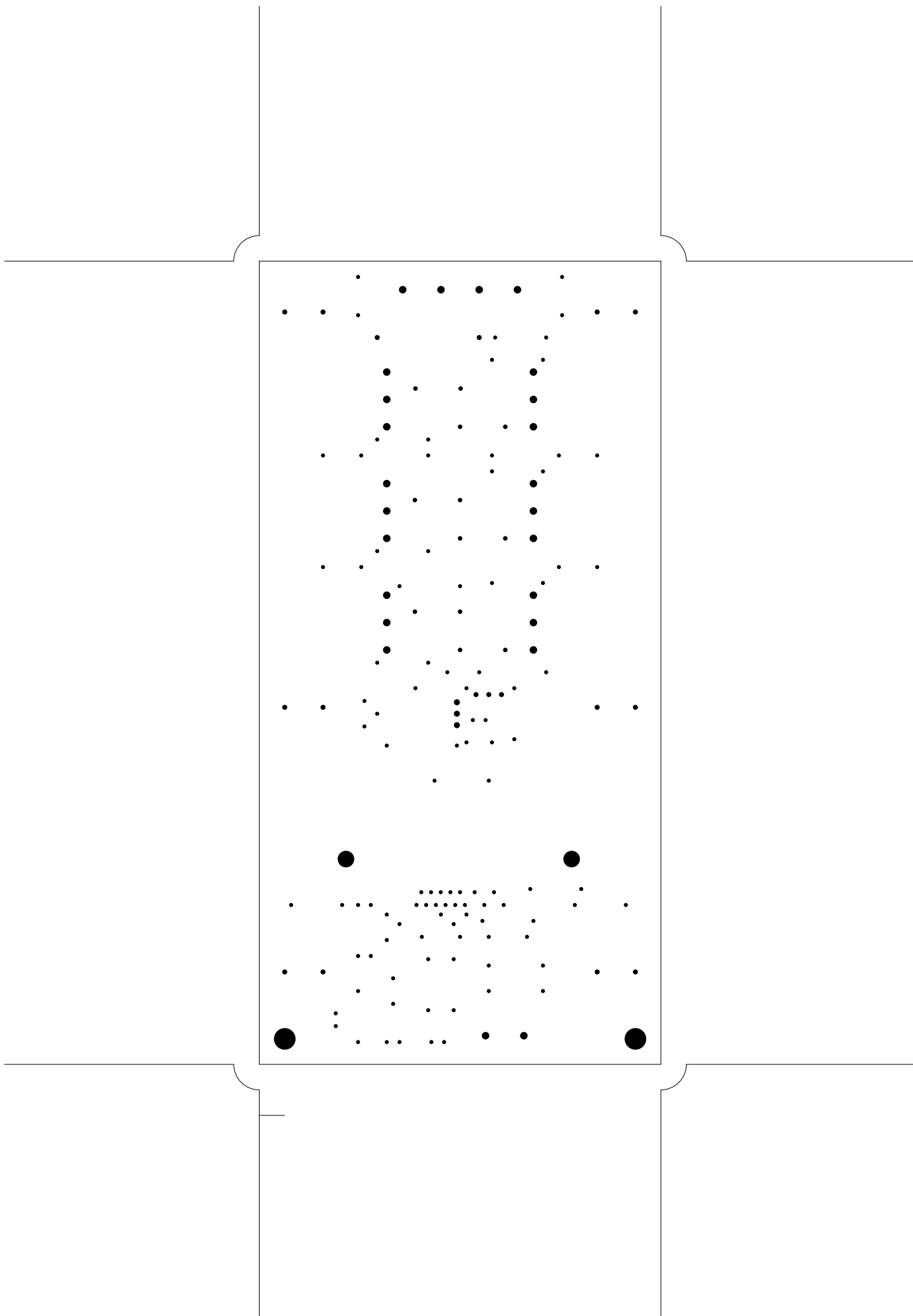
10. topassembly

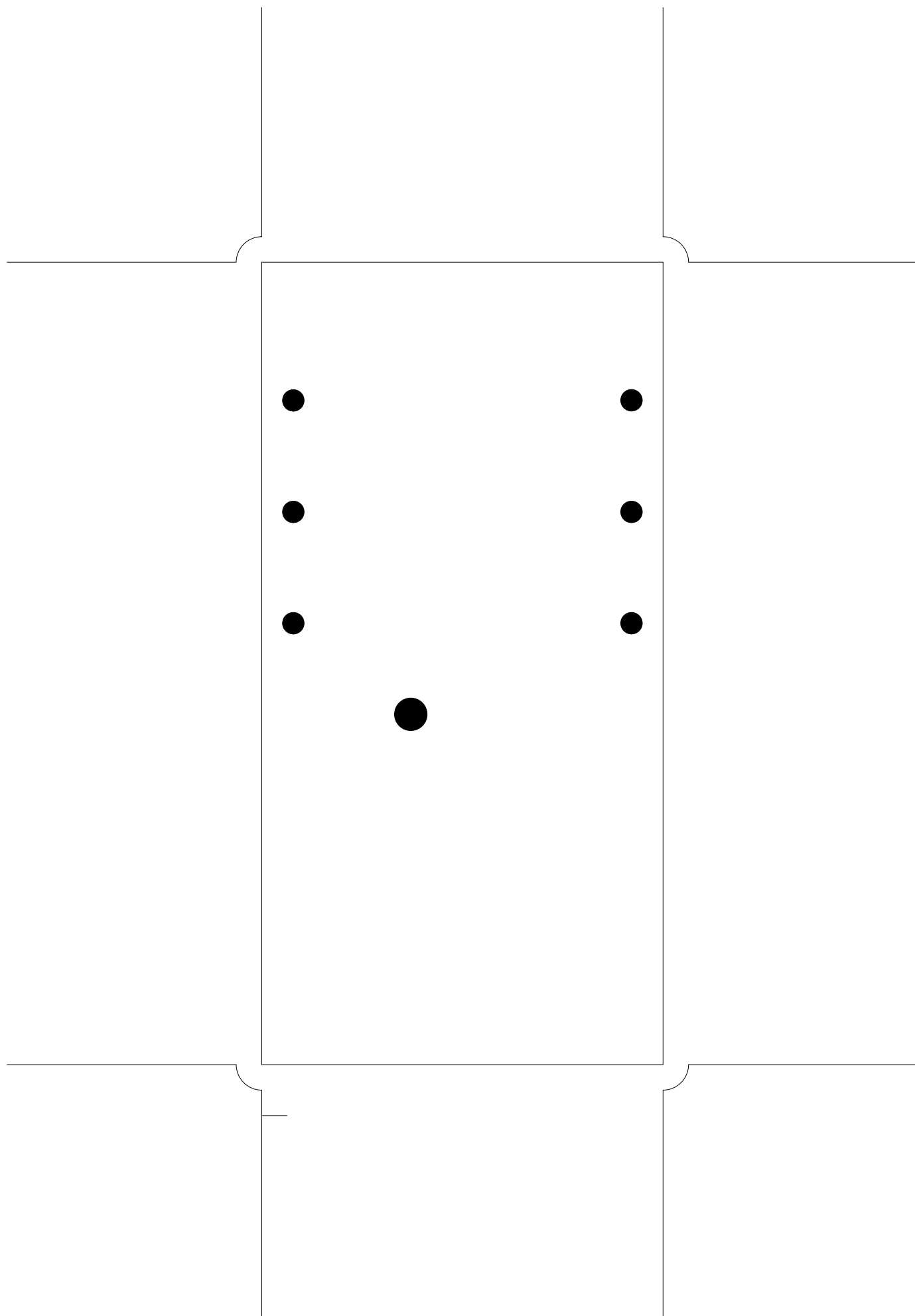
11. bottomassembly

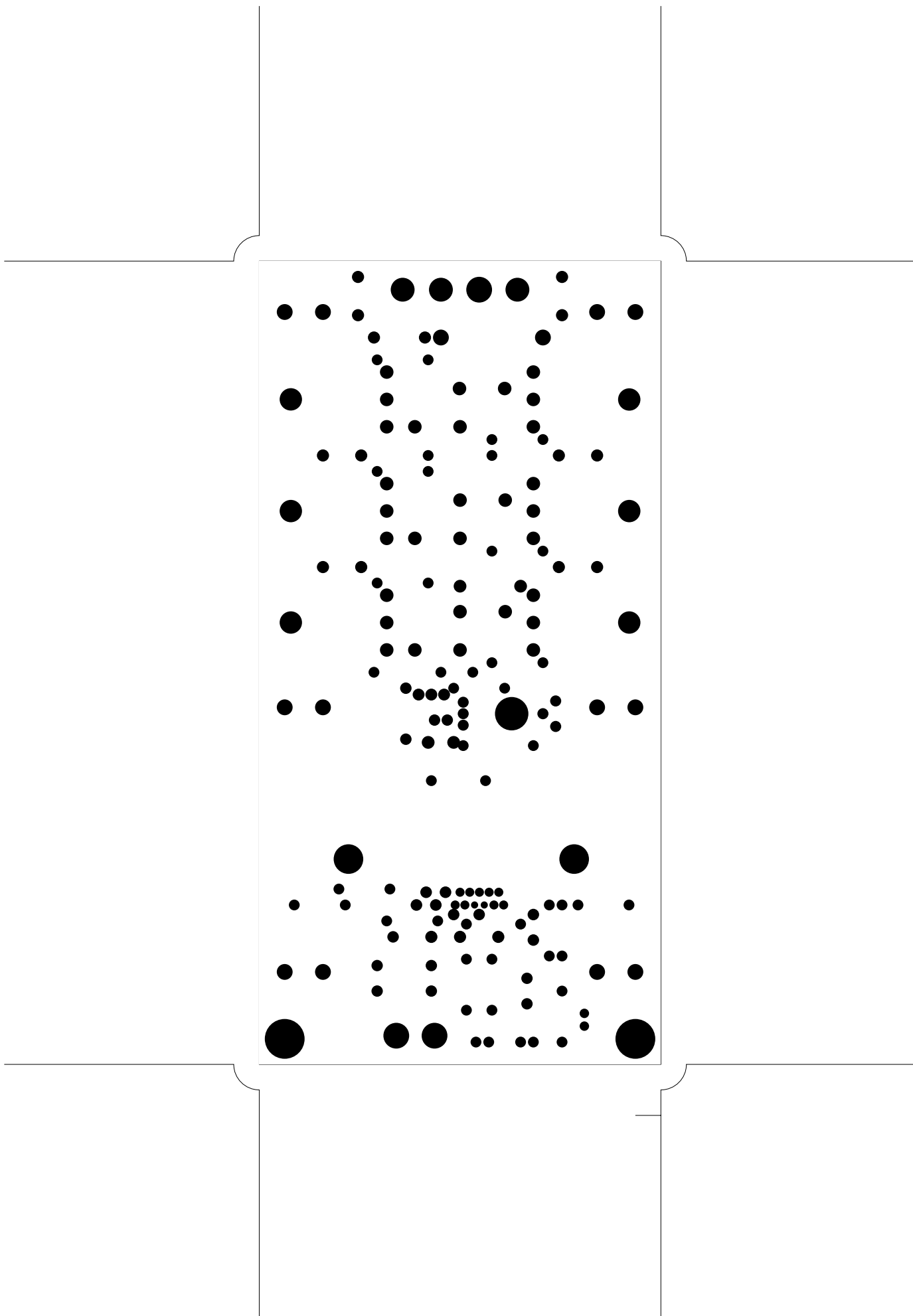
12. fab

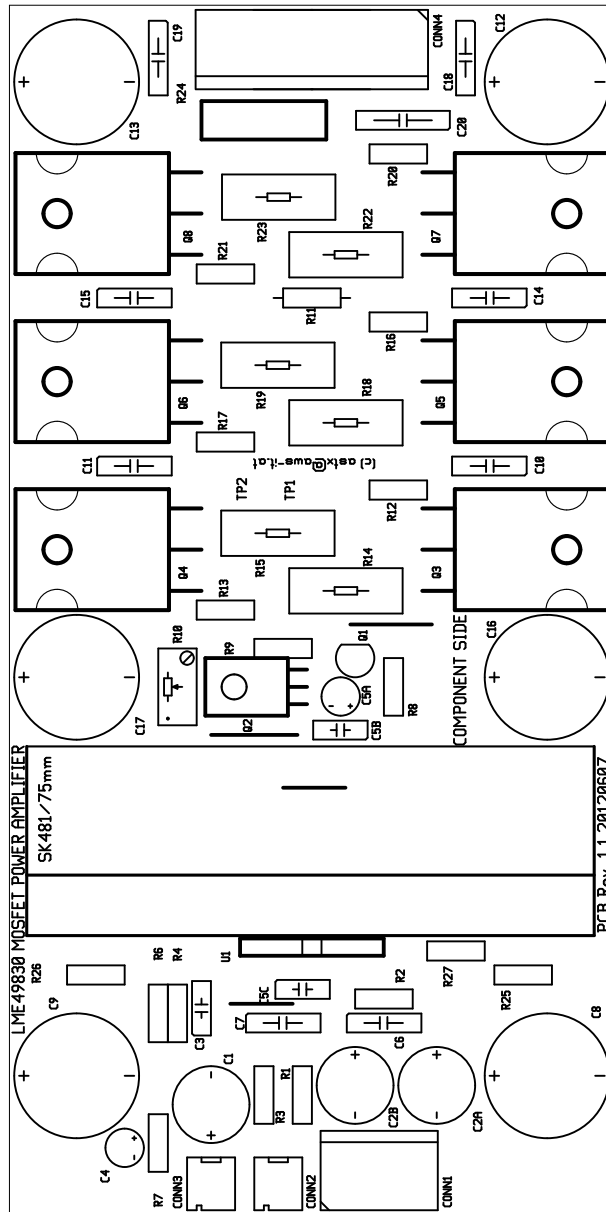


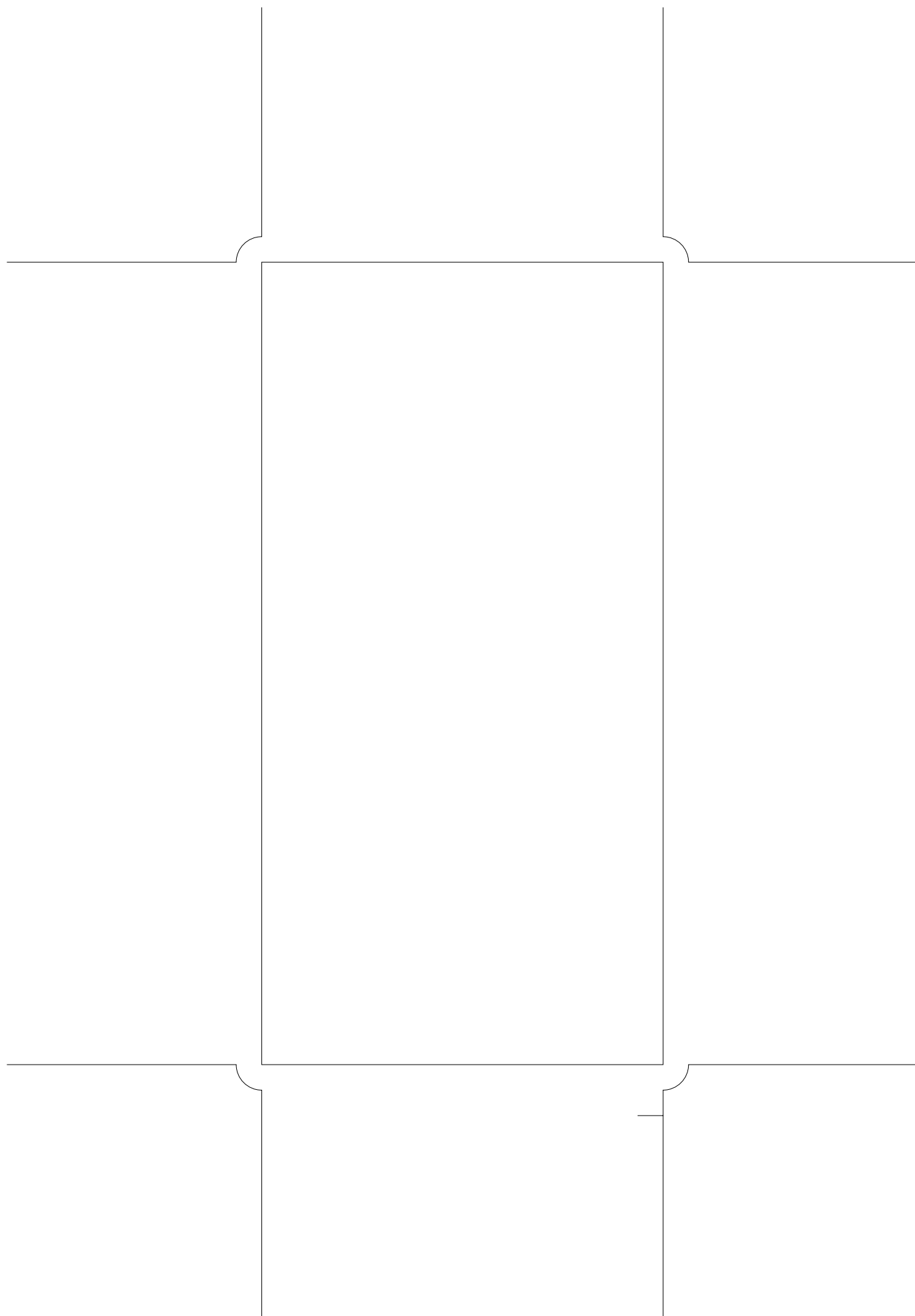




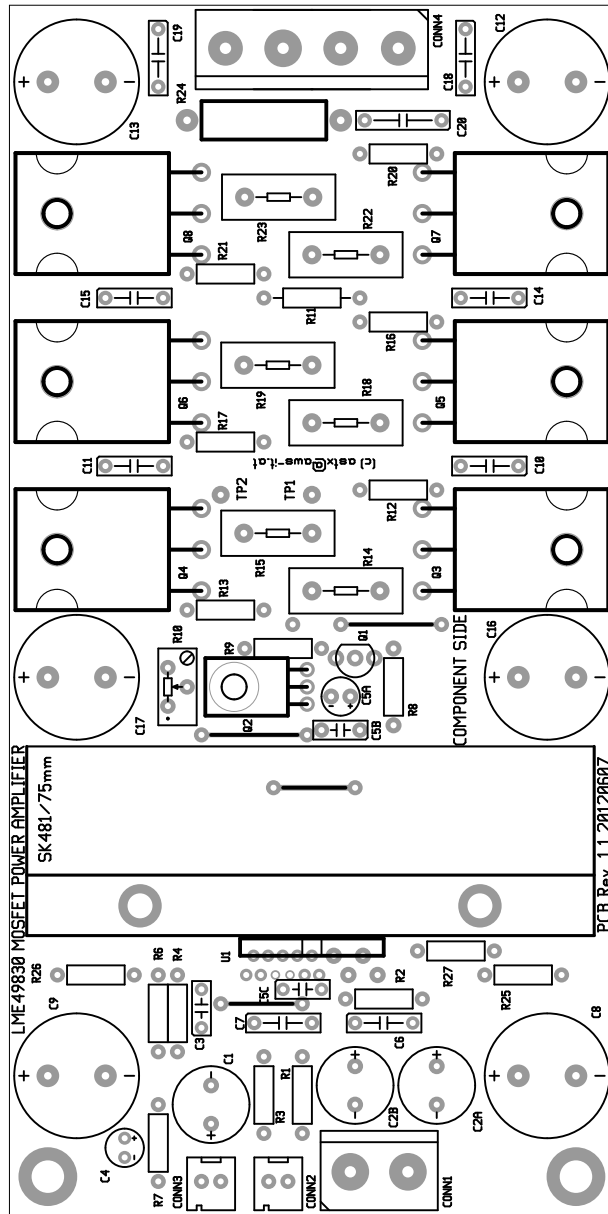


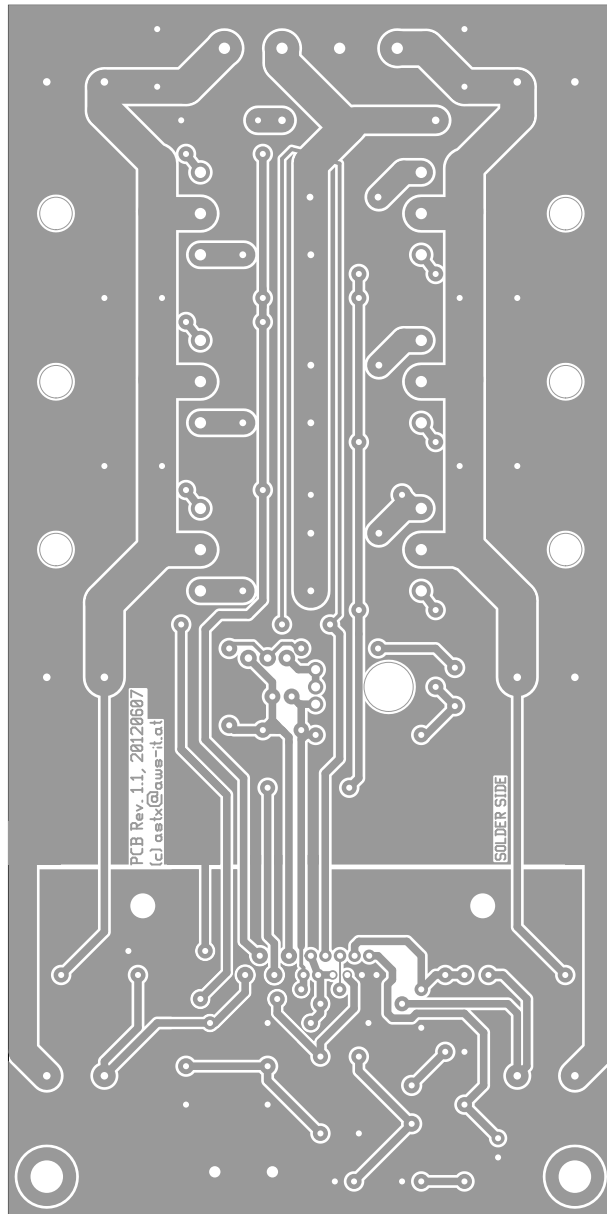






bottomsilk (mirrored), scale = 1:1.000
lme49830_mosfet_amplifier.pcb

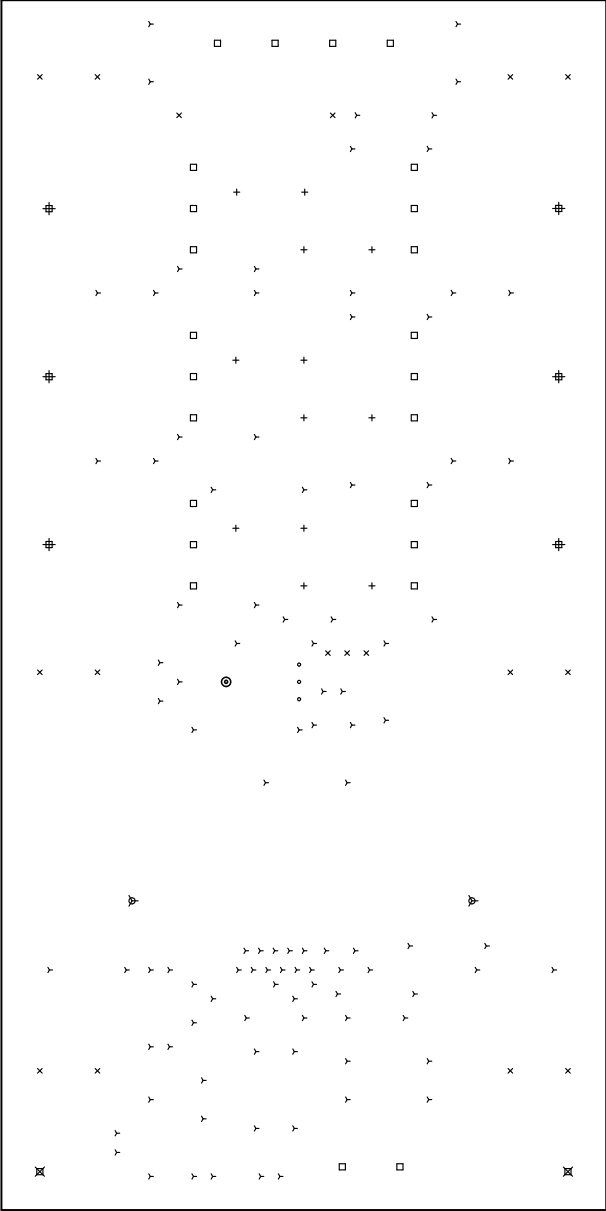




There are 8 different drill sizes used in this layout, 174 holes total

Symbol	Diam. (Inch)	Count	Plated?
Y	0.032	107	YES
+	0.035	12	YES
x	0.039	17	YES
o	0.047	3	YES
□	0.059	24	YES
Ψ	0.130	2	YES
#	0.169	6	NO
⊗	0.169	2	YES
⊙	0.256	1	NO

Title: (unknown) - Fabrication Drawing
Author: ask@aws-it.at
Date: Sun Jan 8 12:40:14 2017 UTC
Maximum Dimensions: 6299.208661 mils wide, 3149.610236 mils high



Board outline is the centerline of this 8.00000 mil rectangle - 0.0 to 6299.208661, 3149.610236 mils