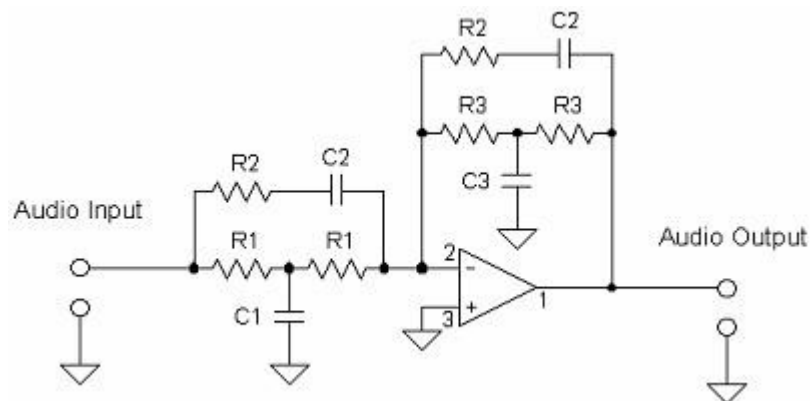


Describing the Linkwitz part

Choosing a speaker element...

	<p>Response 250W 10</p> <p>Size: 10 inch Impedans : 4 Ohm Frequency range : 25-3500 Hz Max power: 160 W Sensitivity: 88.8 dB/SPL F resonance: 25.55 Hz Vas: 155 L Qts: 0.44</p>
---	---

Linkwitz filter



The element used in a 60 litres box

Choose C2:

C2 = **0,047** μF

The component values are:

R1 = 25,13 kOhms

R2 = 31,49 kOhms

R3 = 81,78 kOhms

C1 = 0,3344 μF

C3 = 0,1028 μF

DC gain = 10,25 dB

The element used in a 100 litres box

Choose C2

C2 = **0,068** μF

The Component Values Are:

R1 = 23,03 kOhms

R2 = 24,90 kOhms

R3 = 63,54 kOhms

C1 = 0,325 μF

C3 = 0,1177 μF

DC gain = 8,82 dB