

* SET FOR MINIMUM THD

△ MAXIMUM DC AT OUTPUT <2mV

ALL RESISTORS .5W 1% UNLESS OTHERWISE NOTED

LEFT CHANNEL SHOWN, WITH RIGHT CHANNEL REFERENCE

DESIGNATORS IN PARENTHESIS

SONIC FRONTIERS INC.

LINE3 PREAMPLIFIER - AUDIO CIRCUIT

SIZE DOCUMENT NUMBER

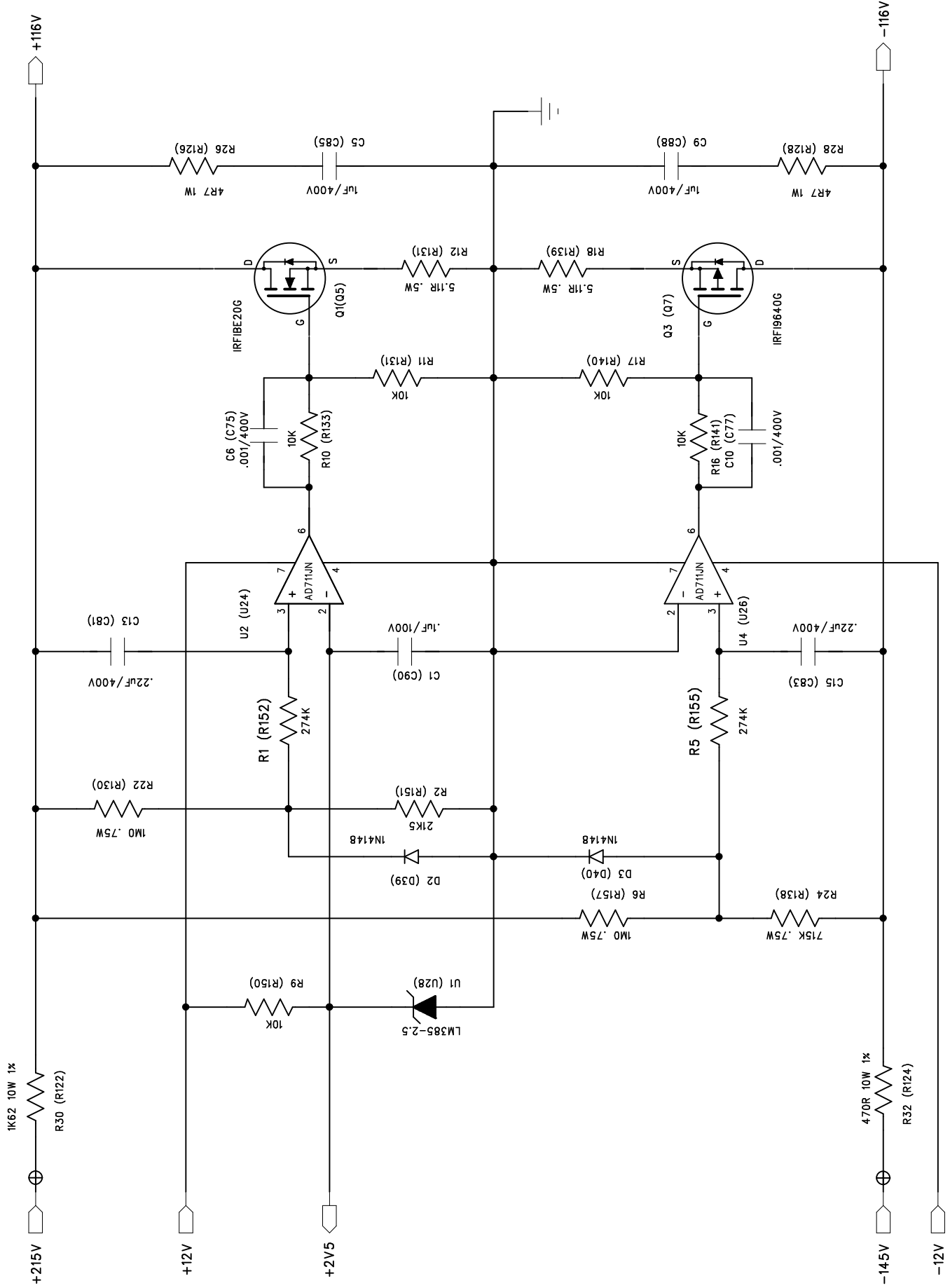
A

DATE: AUG. 97

SHEET 1 of 8

REV

.2



PCB PAD



ALL RESISTORS .25W 1% UNLESS OTHERWISE INDICATED

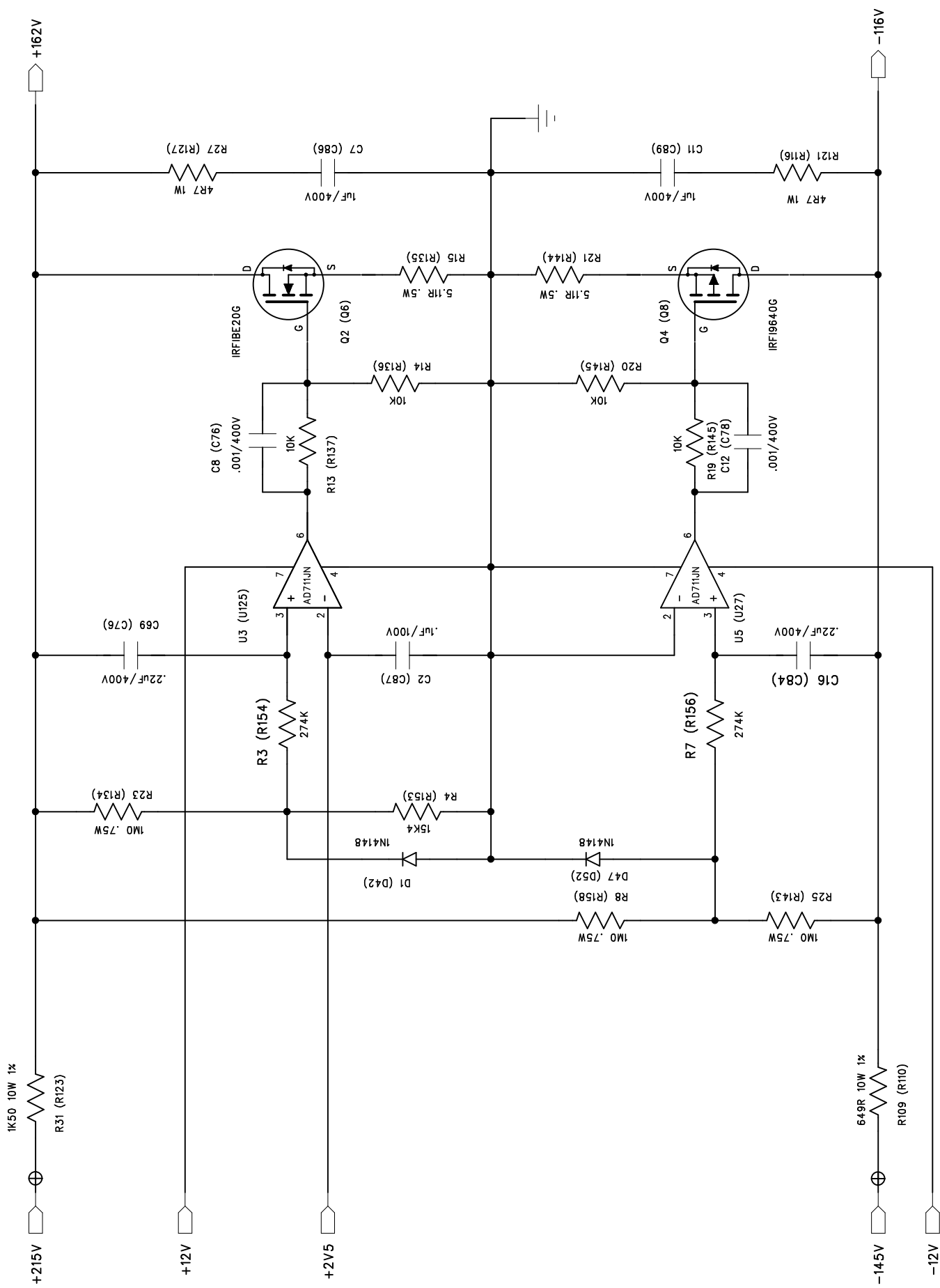
LEFT CHANNEL SHOWN, WITH RIGHT CHANNEL REFERENCE
DESIGNATORS IN PARENTHESIS

SONIC FRONTIERS INC.

LINE3 PREAMPLIFIER - SHUNT REGULATORS

SIZE	DOCUMENT NUMBER	REV
A		.2

DATE: AUG. 97 SHEET 2 of 8



⊕ PCB PAD



ALL RESISTORS .5W UNLESS OTHERWISE STATED

LEFT CHANNEL SHOWN, WITH RIGHT CHANNEL REFERENCE
DESIGNATORS IN PARENTHESIS

SONIC FRONTIERS INC.

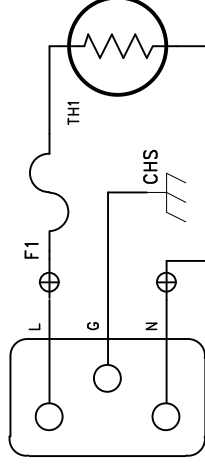
LINE3 PREAMPLIFIER – SHUNT REGULATORS

SIZE A
DOCUMENT NUMBER

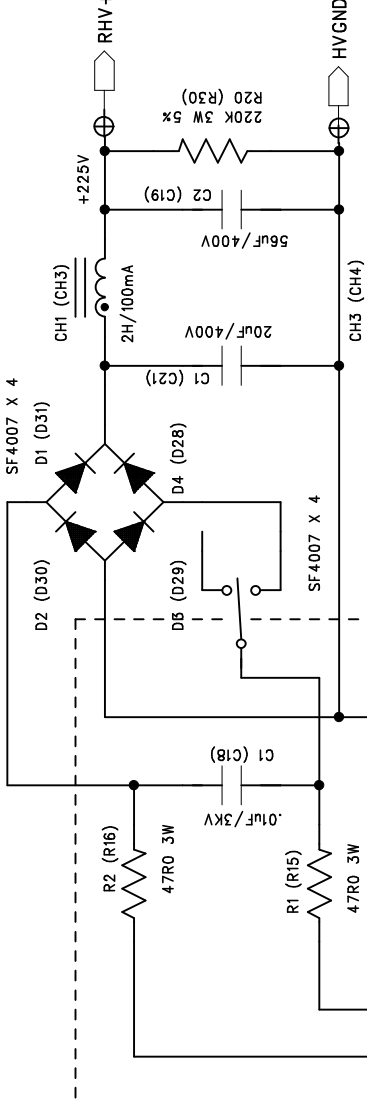
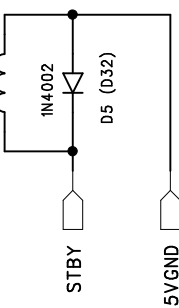
REV .2

DATE: AUG. 97
SHEET 3 of 8

100-120V - BUSS MDL 2
220-240 - BUSS MDL 1

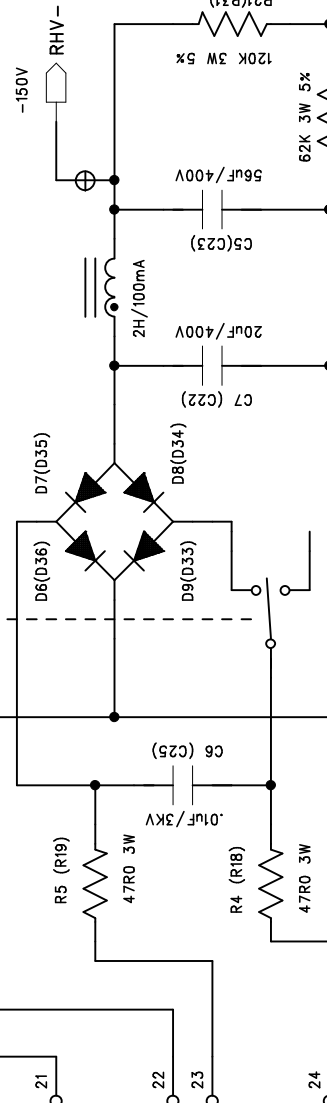


INRUSH CURRENT
LIMITER
KEYSTONE CARBON CL-30

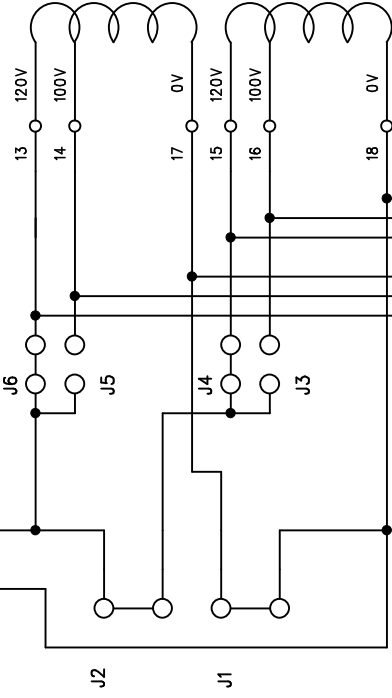


POWER SWITCH

SUM (R) RX0081 030 6
T1 (T3)

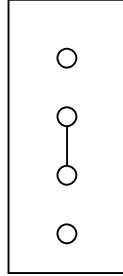


TRANSFORMER(S) SHOWN WITH
JUMPERS SET FOR 110-120VAC



TO T2
TELEMA 15VA
TRANSFORMER

JUMPER CONFIGURATION FOR 220-240VAC



TO RIGHT
CHANNEL TRANSFORMER

PCB PAD



J - ZERO OHM JUMPER

D28 AND D30 - MBR1525CT

* COMMON HEATSINK

ALL RESISTORS 1/2 W 1 % UNLESS OTHERWISE INDICATED

LEFT CHANNEL SHOWN, WITH RIGHT CHANNEL REFERENCE
DESIGNATORS IN PARENTHESIS

SONIC FRONTIERS INC.

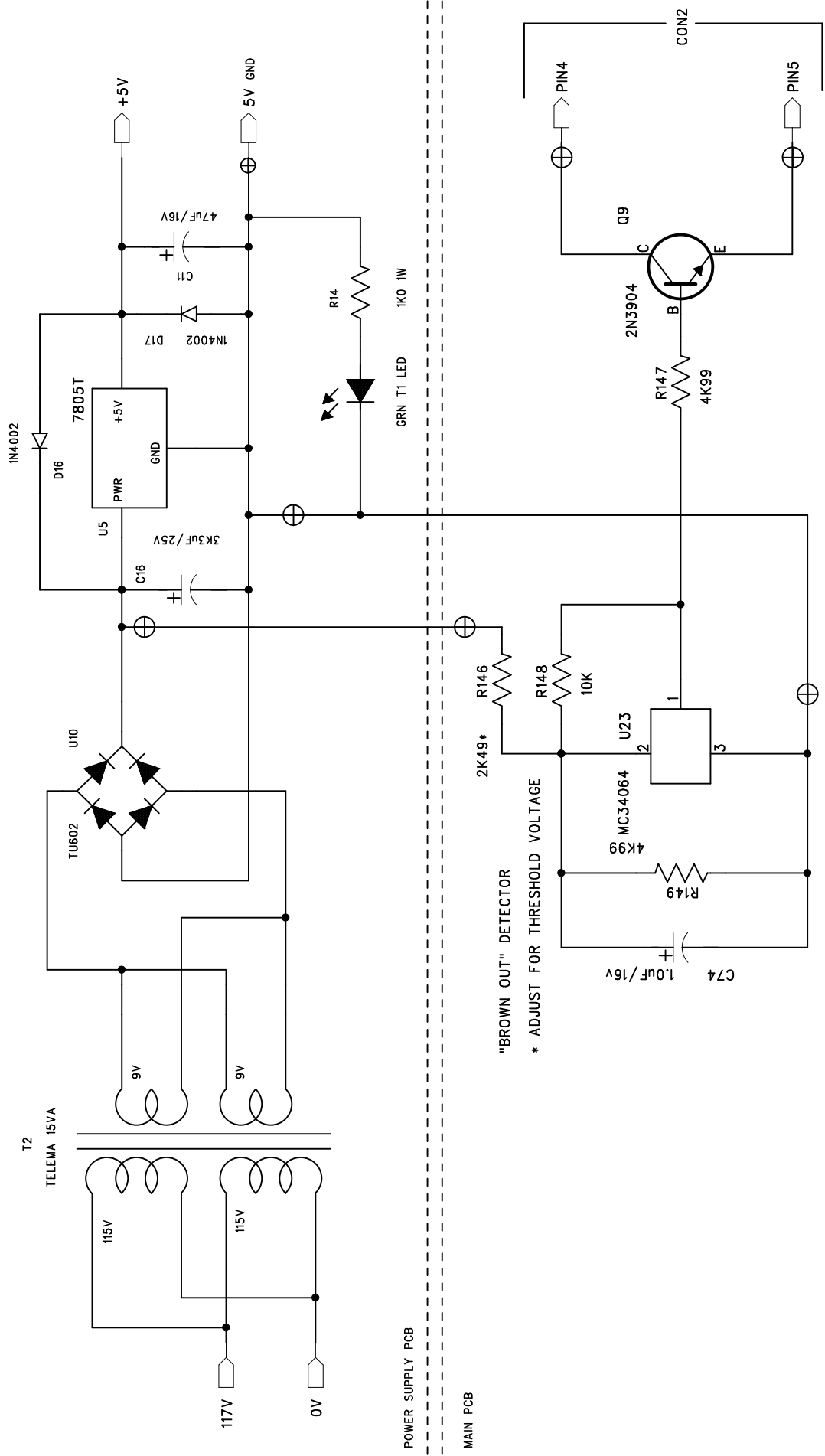
LINE 3 PREAMPLIFIER - HV SUPPLY

SIZE A DOCUMENT NUMBER

DATE: AUG. 97

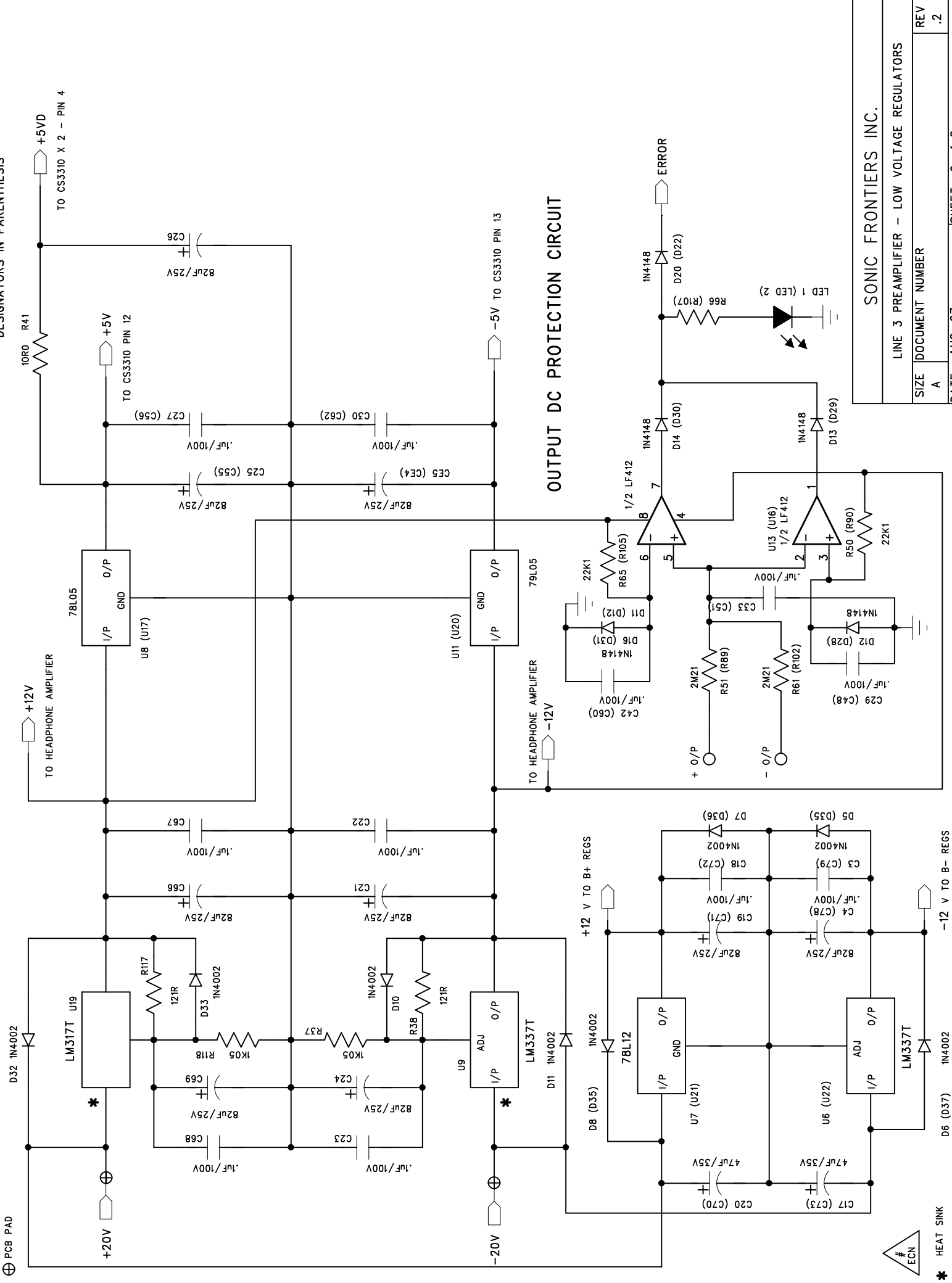
SHEET 4 of 8

REV .2



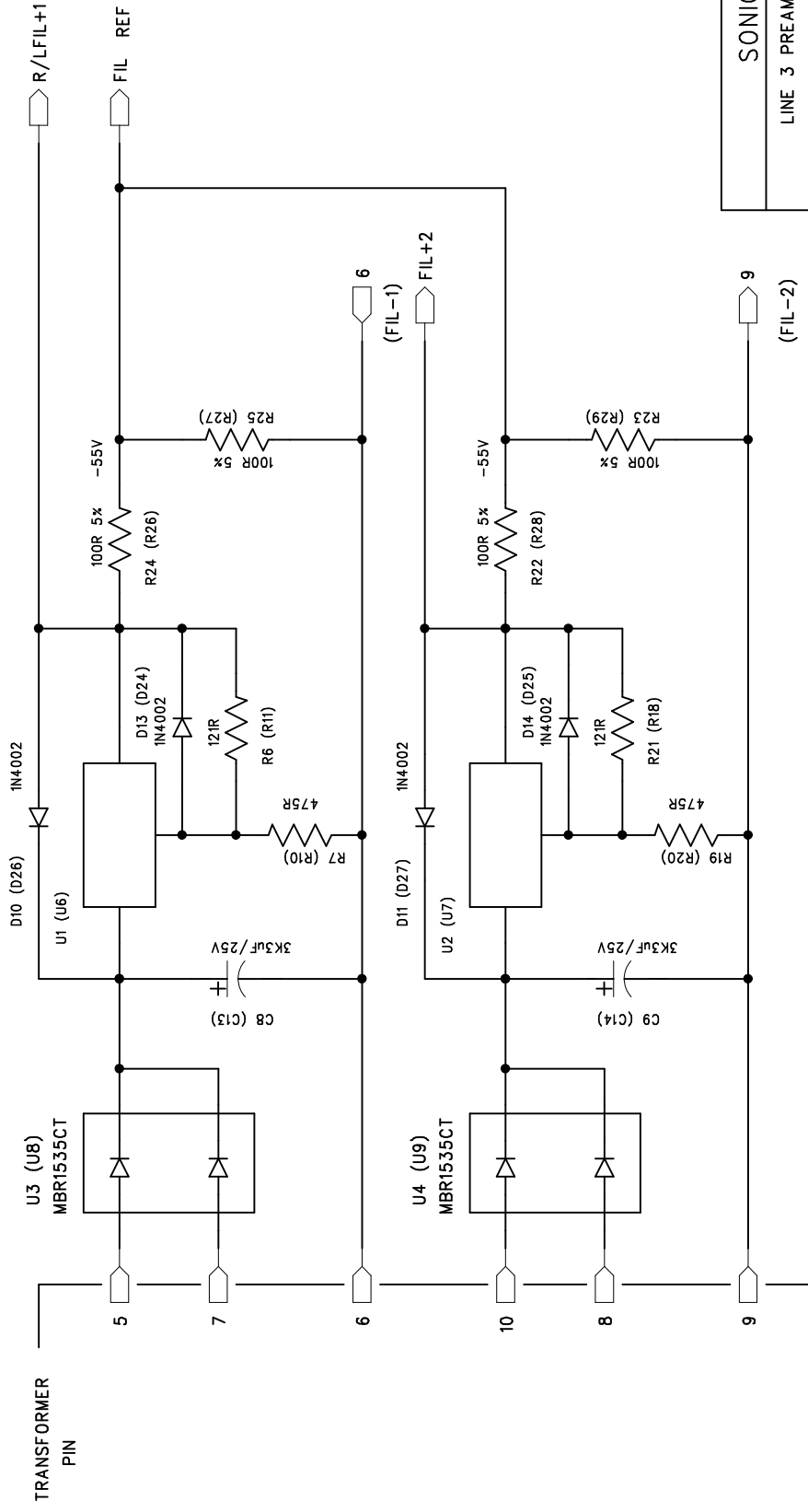
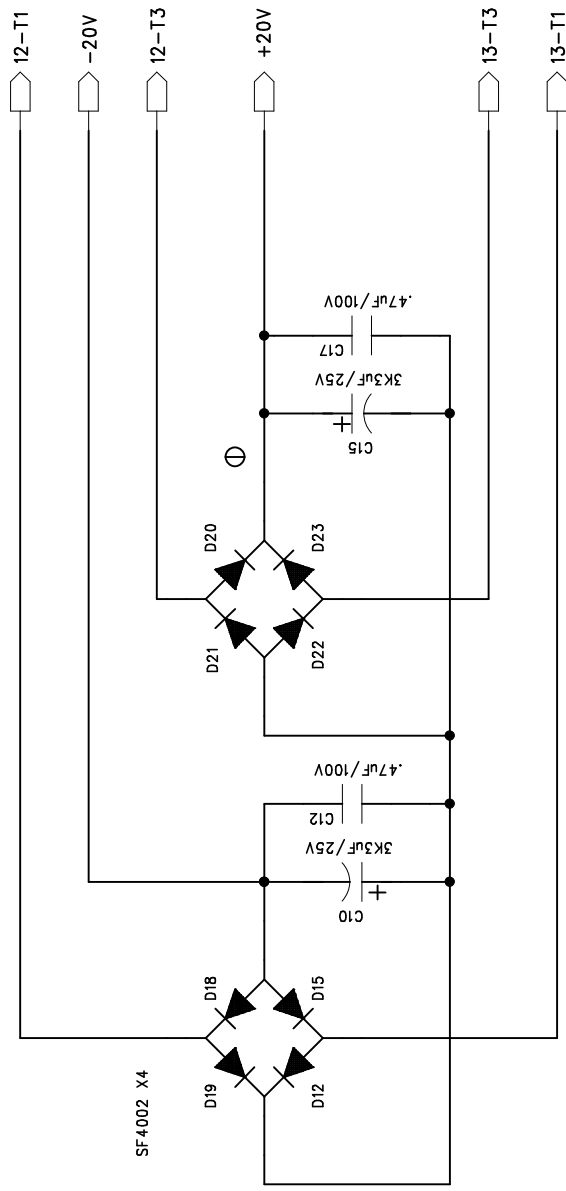
ALL RESISTORS .25W 1% UNLESS OTHERWISE NOTED

LEFT CHANNEL SHOWN, WITH RIGHT CHANNEL REFERENCE DESIGNATORS IN PARENTHESIS

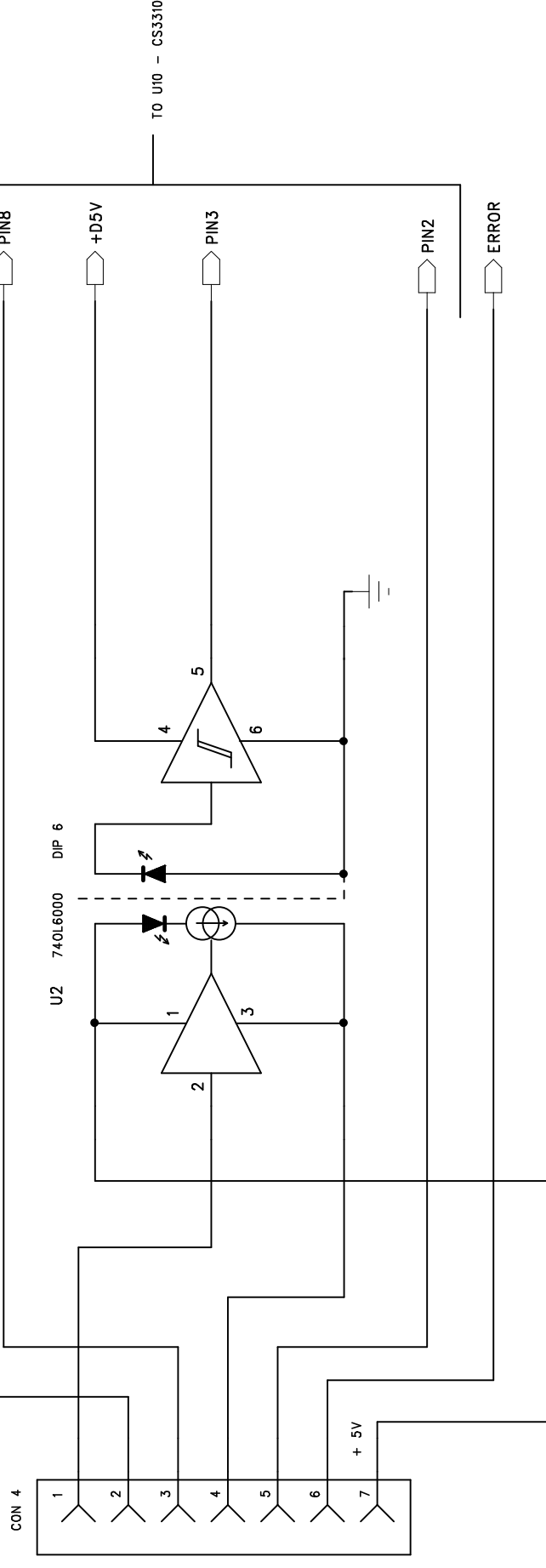


HEAT SINK

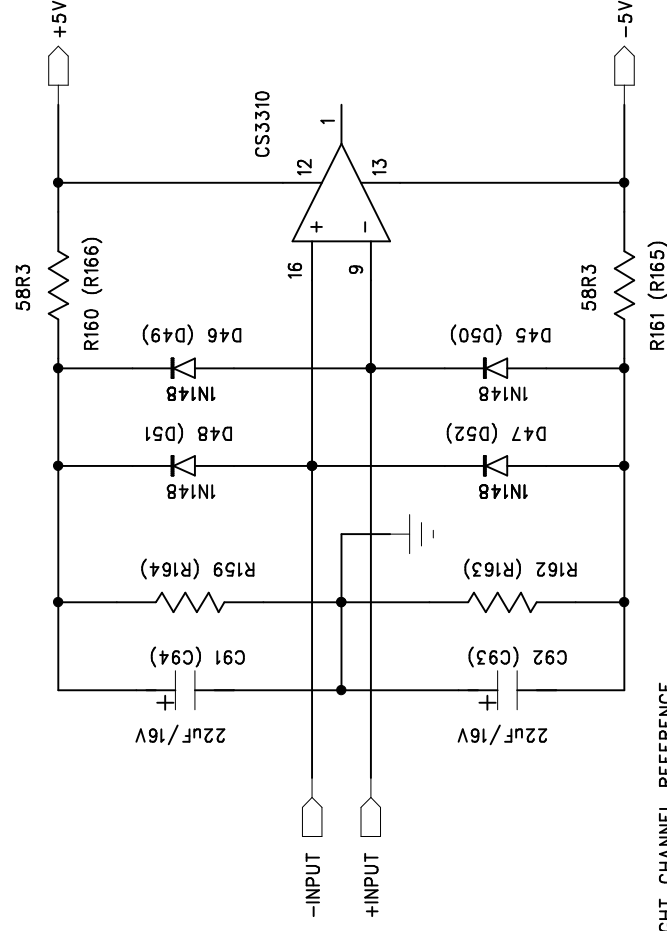
SONIC FRONTIERS INC.		
LINE 3 PREAMPLIFIER – LOW VOLTAGE REGULATORS		
SIZE A	DOCUMENT NUMBER	REV .2
DATE: AUG. 97		
SHEET 6 of 8		



DATA BUFFER FOR CS3310



INPUT CLIPPER FOR CS3310



	LEFT CHANNEL SHOWN, WITH RIGHT CHANNEL DESIGNATORS IN PARENTHESIS	REFERENCE
1	1 (1)	1
2	2 (2)	2
3	3 (3)	3
4	4 (4)	4
5	5 (5)	5
6	6 (6)	6
7	7 (7)	7
8	8 (8)	8
9	9 (9)	9
10	10 (10)	10
11	11 (11)	11
12	12 (12)	12
13	13 (13)	13
14	14 (14)	14
15	15 (15)	15
16	16 (16)	16
17	17 (17)	17
18	18 (18)	18
19	19 (19)	19
20	20 (20)	20
21	21 (21)	21
22	22 (22)	22
23	23 (23)	23
24	24 (24)	24
25	25 (25)	25
26	26 (26)	26
27	27 (27)	27
28	28 (28)	28
29	29 (29)	29
30	30 (30)	30
31	31 (31)	31
32	32 (32)	32
33	33 (33)	33
34	34 (34)	34
35	35 (35)	35
36	36 (36)	36
37	37 (37)	37
38	38 (38)	38
39	39 (39)	39
40	40 (40)	40
41	41 (41)	41
42	42 (42)	42
43	43 (43)	43
44	44 (44)	44
45	45 (45)	45
46	46 (46)	46
47	47 (47)	47
48	48 (48)	48
49	49 (49)	49
50	50 (50)	50
51	51 (51)	51
52	52 (52)	52
53	53 (53)	53
54	54 (54)	54
55	55 (55)	55
56	56 (56)	56
57	57 (57)	57
58	58 (58)	58
59	59 (59)	59
60	60 (60)	60
61	61 (61)	61
62	62 (62)	62
63	63 (63)	63
64	64 (64)	64
65	65 (65)	65
66	66 (66)	66
67	67 (67)	67
68	68 (68)	68
69	69 (69)	69
70	70 (70)	70
71	71 (71)	71
72	72 (72)	72
73	73 (73)	73
74	74 (74)	74
75	75 (75)	75
76	76 (76)	76
77	77 (77)	77
78	78 (78)	78
79	79 (79)	79
80	80 (80)	80
81	81 (81)	81
82	82 (82)	82
83	83 (83)	83
84	84 (84)	84
85	85 (85)	85
86	86 (86)	86
87	87 (87)	87
88	88 (88)	88
89	89 (89)	89
90	90 (90)	90
91	91 (91)	91
92	92 (92)	92
93	93 (93)	93
94	94 (94)	94
95	95 (95)	95
96	96 (96)	96
97	97 (97)	97
98	98 (98)	98
99	99 (99)	99
100	100 (100)	100