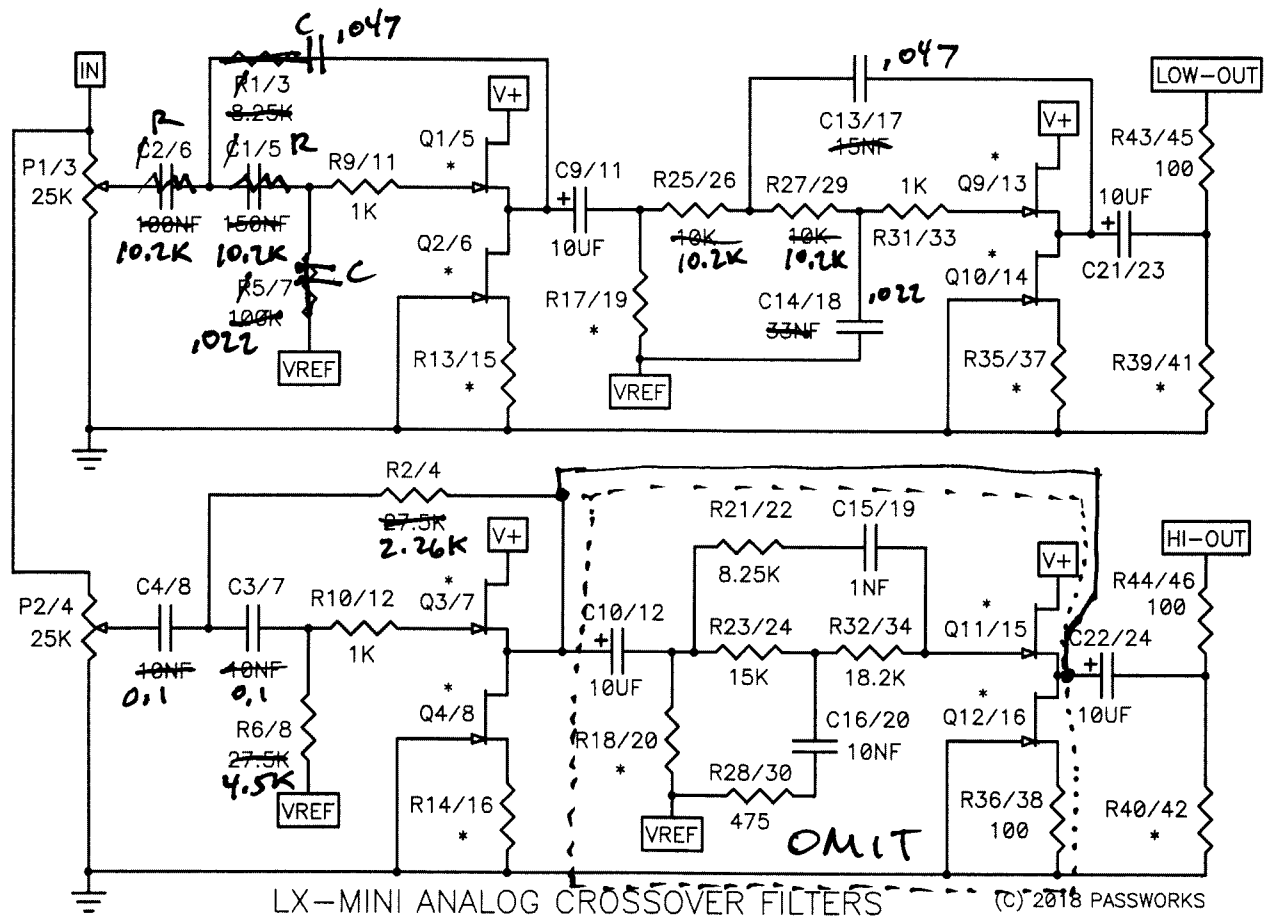


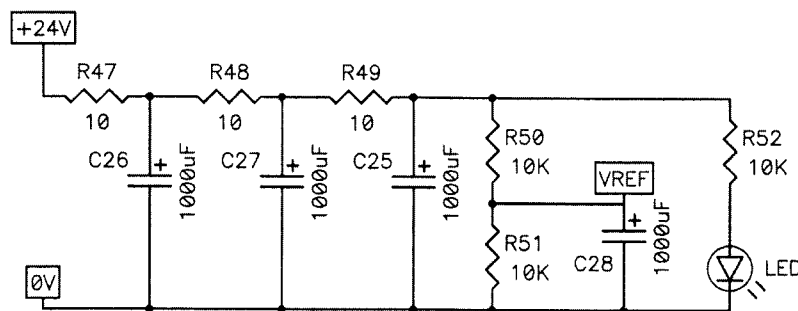
ADS L980 500HZ B1AMP LP= 24dB/OCT L-R HP= 12dB/OCT BUTTERWORTH
 So here's the actual circuit of the analog LX-mini crossover:



PART NUMBERS: LEFT CH / RIGHT CH ALL JFETS SELECTED AND MATCHED
 RESISTORS 13 - 20, 35 - 42 VALUE SPECIFIC TO JFET SELECTION

CAP VALUES = μF

And here is the power supply filtering for the external switching 24 volt power supply. The crossover draws about 75 ma current, and I recommend a quiet wall-wart rated at 500 mA or more. The inexpensive Triad WSU240-0500-13 gives excellent results, but you are free to use something else, including regulated linear supplies.



LX-MINI ANALOG CROSSOVER POWER SUPPLY