

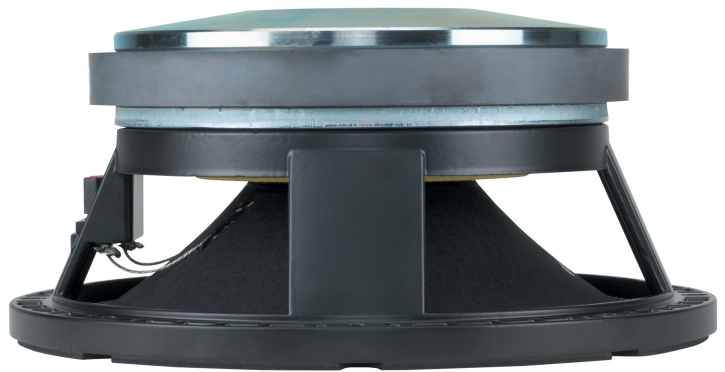
L10-750YK

MID-BASS

DESCRIPTION

The L10-750YK is a professional mid-bass woofer featuring very high output and dynamics.

The mobile equipment, used a 3" coil, fiberglass former and copper wire winding, has enable considerable improvement in transient peak response and has allowed good extension on mid-high frequencies. A specially designed M-roll surround guarantee a very low midrange distortion and perfect damping of the spurious resonances.



FEATURES

- 3-inch, fiberglass inside/outside copper voice coil
- 700W continuous program power handling
- 100 dB Sensitivity
- 70 Hz – 3 kHz Frequency range
- Shaped M-roll damped surround

TECHNICAL SPECIFICATIONS

General specifications

Nominal Diameter:	10 inch / 254 mm
Rated Impedance:	8 ohm
Program Power (watt):	700 W
Power handling capacity:	350 W
Sensitivity:	100.0 dB
Frequency range:	70 - 3000 Hz
Effective piston diameter:	210 mm / 8.27 inch
Max. Excursion Before Damage:	40 mm / 1.57 inch
Minimum Impedance (ohm):	7.0 ohm
Voice Coil Diameter:	3.0 inch / 76 mm
Voice Coil Winding Material:	Copper
Voice Coil Length:	9 mm / 0.35 inch
Number of layers:	2
Kind of layers:	inside/outside
Top Plate Thickness:	9 mm / 0.35 inch
Cone Design:	Curved
Surround Material:	Polycotton
Surround Design:	M-roll
Magnets:	Ceramic
Spider:	Single

Thiele - small parameters

Resonance frequency (Fs):	68 Hz
DC resistance (Re) (ohm):	5.10 ohm
Mechanical factor:	4.20 Qms
Electrical factor:	0.25 Qes
Total factor:	0.24 Qts
Bl factor (Bl) (T x m):	17.50 T x m
Effective moving mass (Mms):	36.0 g
Equivalent Cas air loaded (Vas):	26.0 liters
Effective piston area (Sd):	0.040 m ²
Max. linear excursion (Xmax):	3 mm
Voice coil inductance @ 1kHz (Le1k):	0.50 mH
Half-space efficiency (Eff):	3.15%

Mounting informations

Overall diameter:	260 mm / 10.24 inches
Bolt circle diameter:	242-247 mm / 9.53-9.72 inch
Bolt hole diameter:	6 mm / 0.24 inch
Front mount baffle cut-out:	230 mm / 9.06 inch
Rear mount baffle cut-out:	229 mm / 9.02 inch
Volume occupied by the driver:	1.2 liters / 0.05 ft ³

Standard compliance

CE marking:	Yes
-------------	-----

Size

Height:	117 mm / 4.61 inches
Diameter:	260 mm / 10.24 inches
Weight:	7 kg / 15.43 lbs

Shipping informations

Package Height:	185 mm / 7.28 inches
Package Width:	290 mm / 11.42 inches
Package Depth:	285 mm / 11.22 inches
Package Weight:	7.9 kg / 17.42 lbs

PART NUMBER

- | | |
|-------------------|-------------------|
| • 11130015 | • 11100049 |
| L10-750YK | L10-750YK |
| 8ohm | 16ohm |

