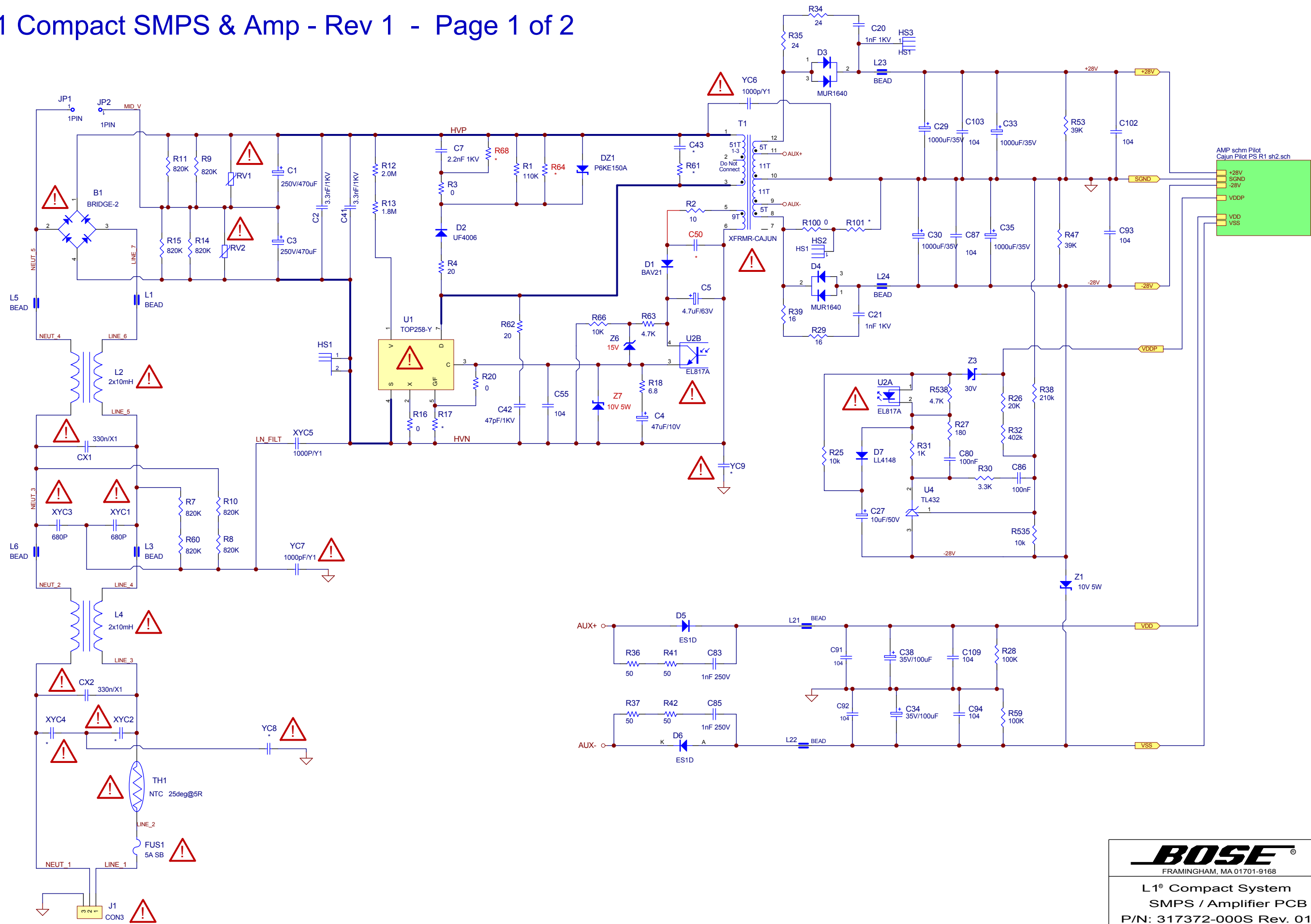


L1 Compact SMPS & Amp - Rev 1 - Page 1 of 2



AC Input from IEC outlet and AC Power Switch

**BOSE**<sup>®</sup>  
FRAMINGHAM, MA 01701-9168

L1<sup>®</sup> Compact System  
SMPS / Amplifier PCB  
P/N: 317372-000S Rev. 0

Sheet 1 of 2