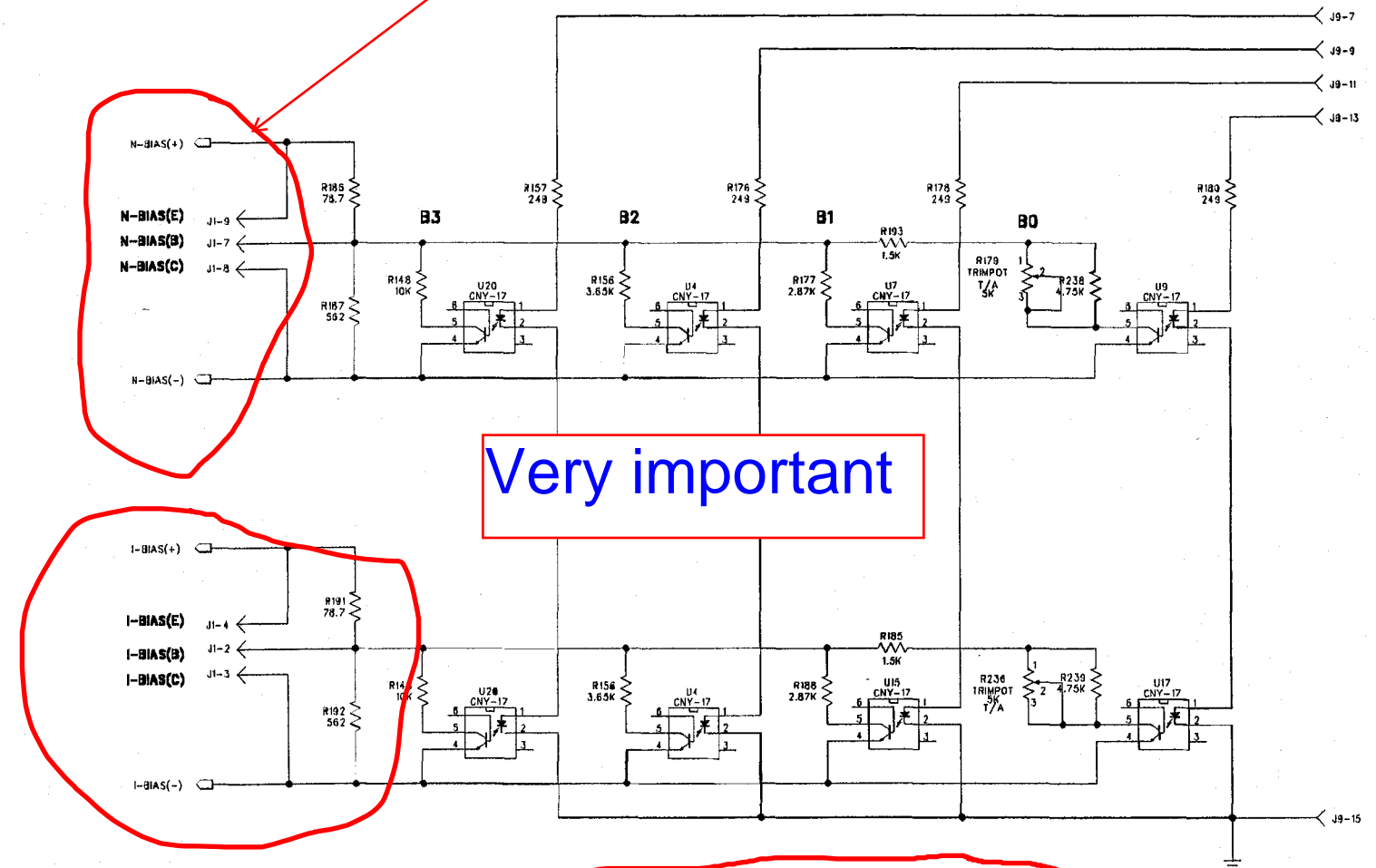
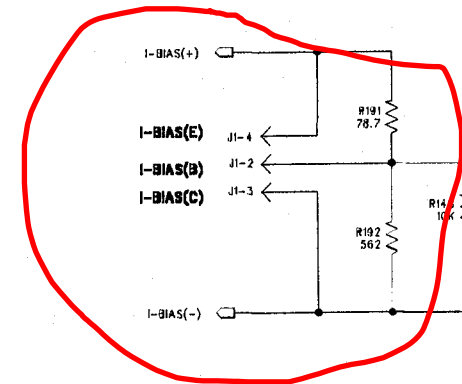


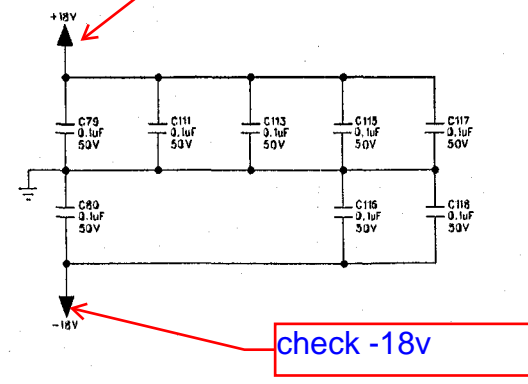
check both  
channels



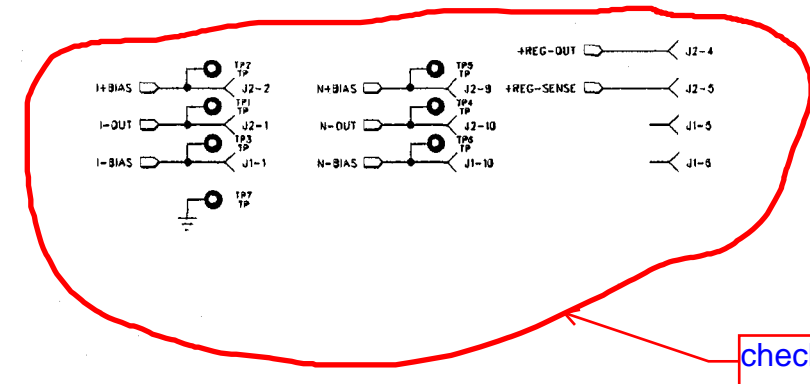
Very important



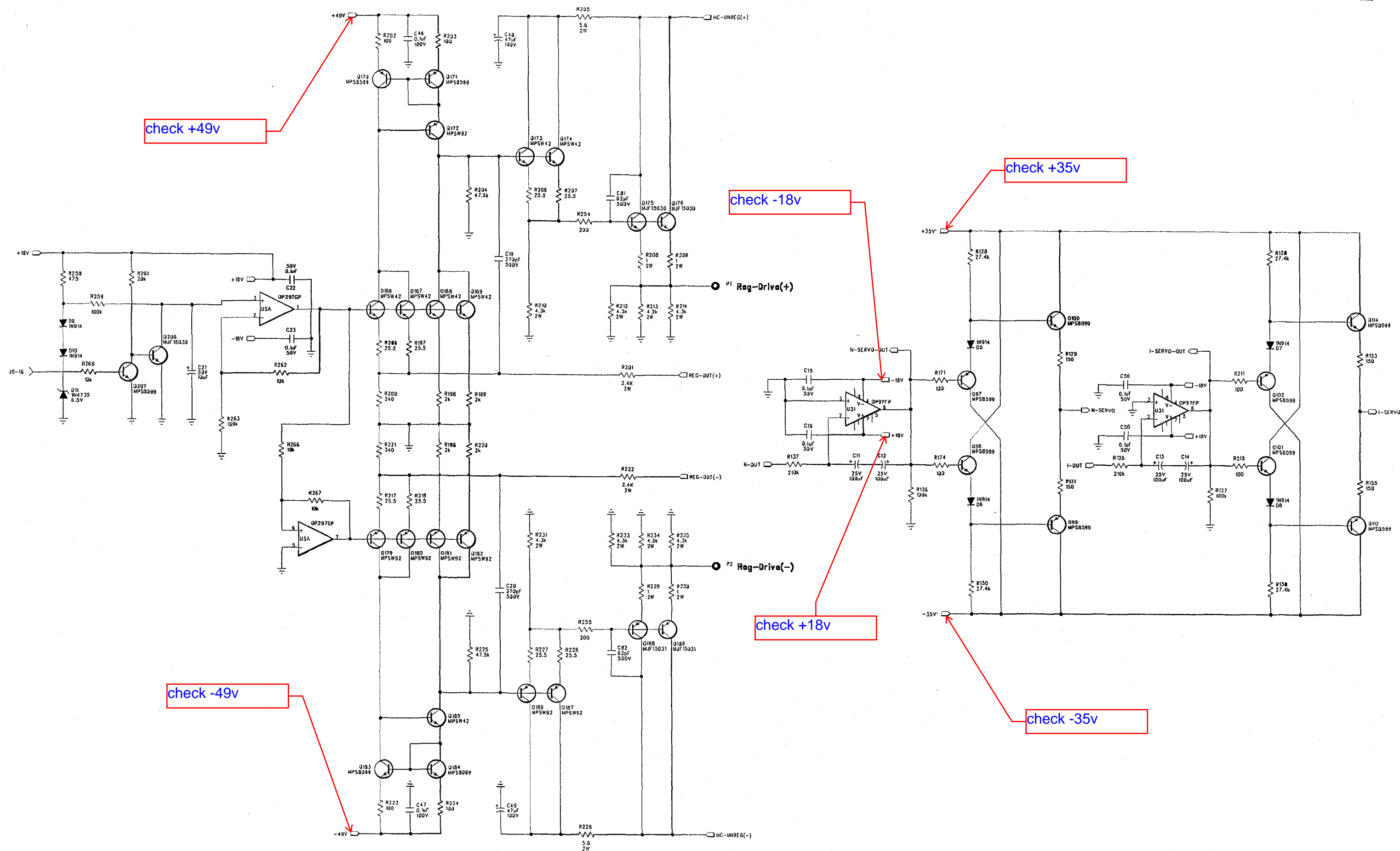
check +18v



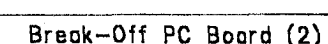
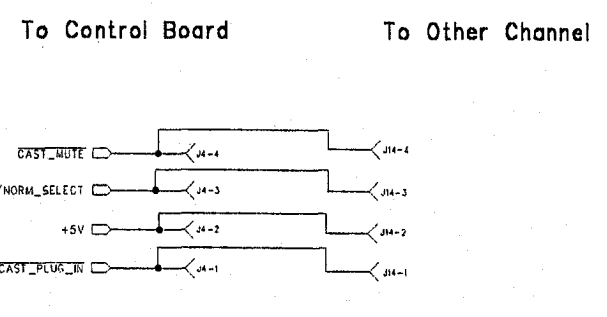
check -18v



check

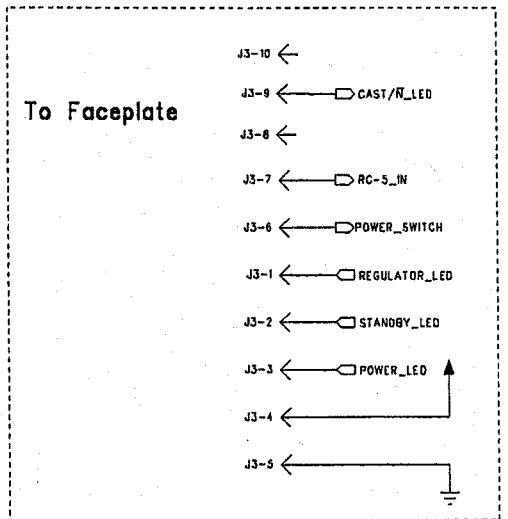
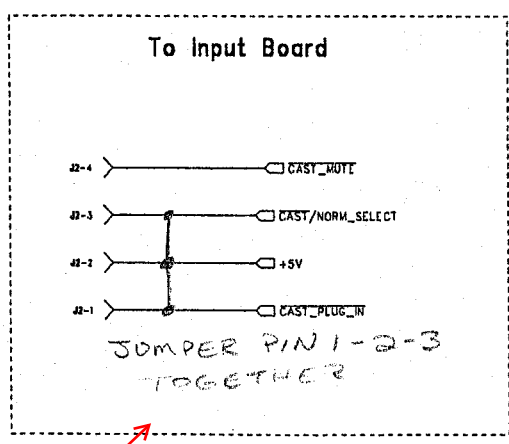
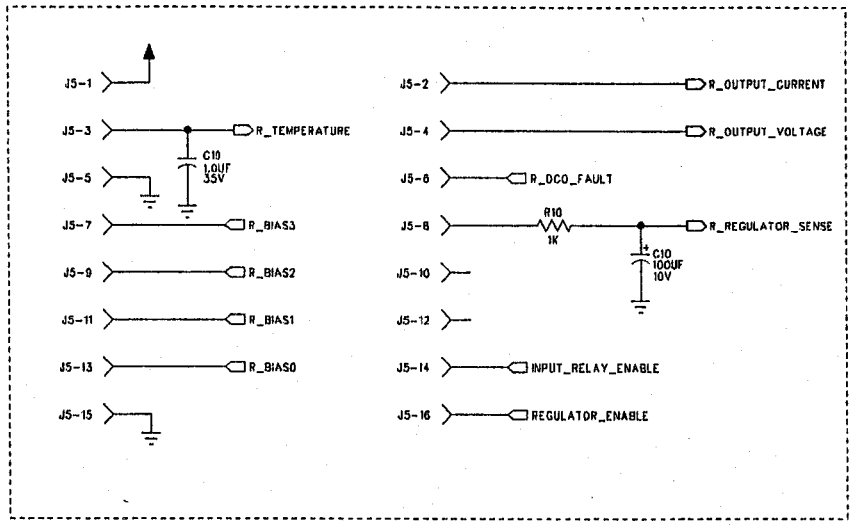
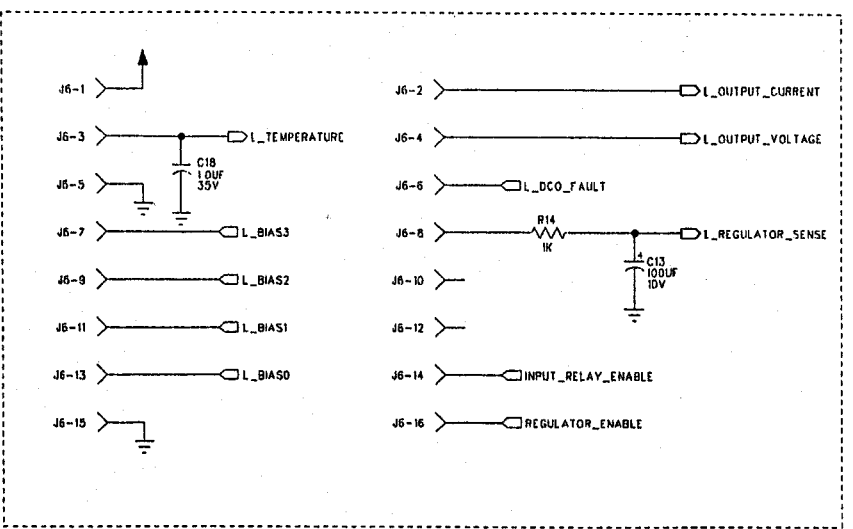
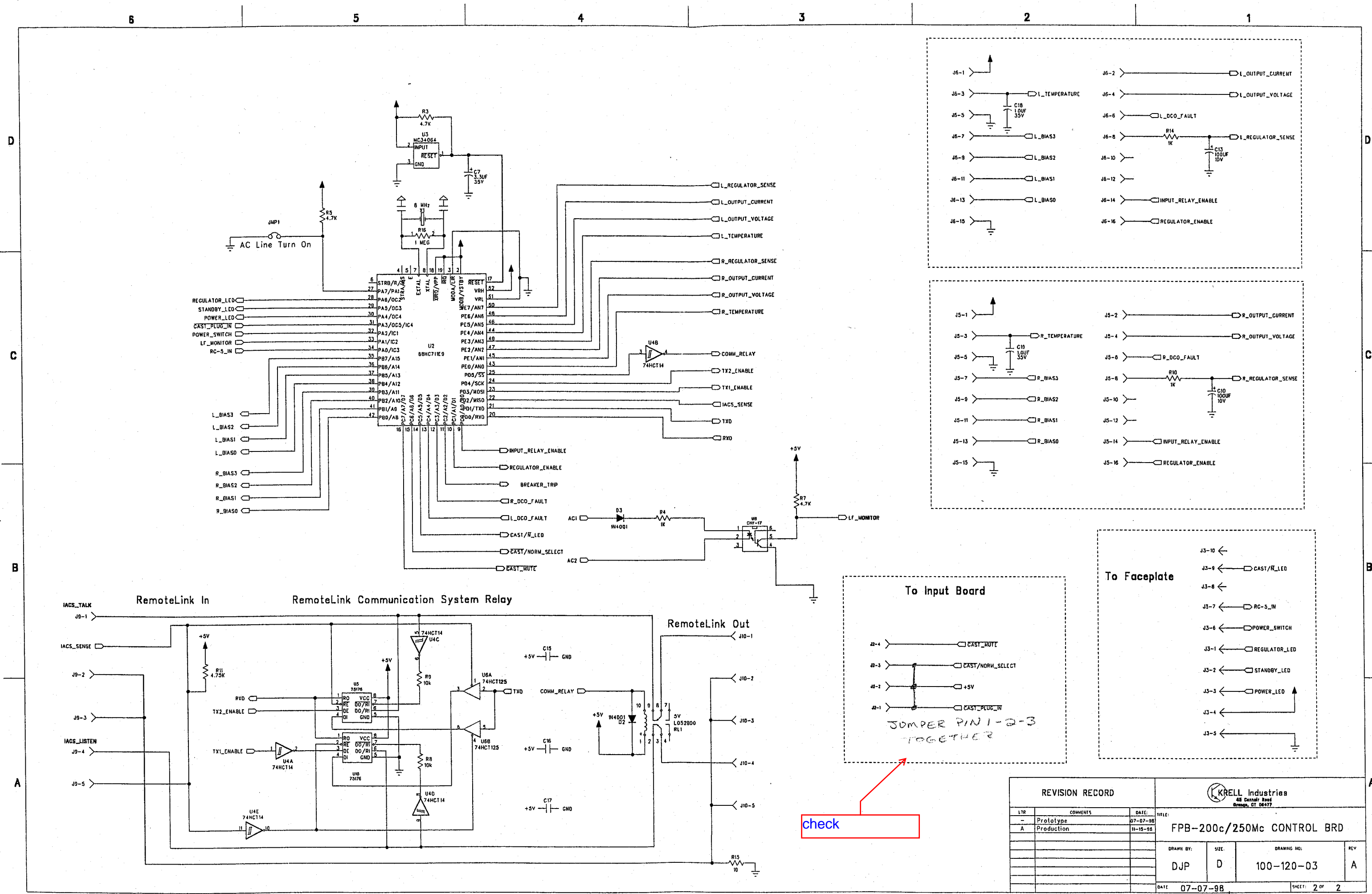




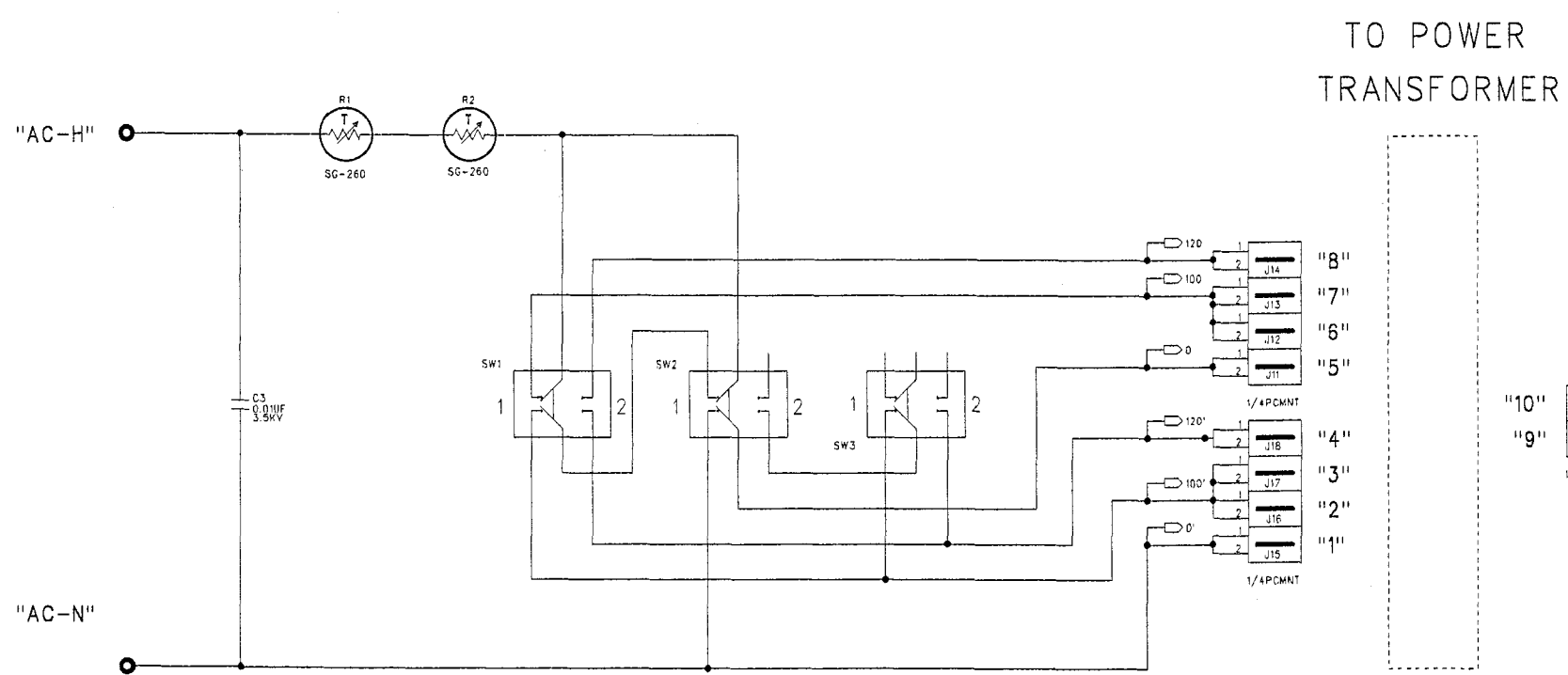


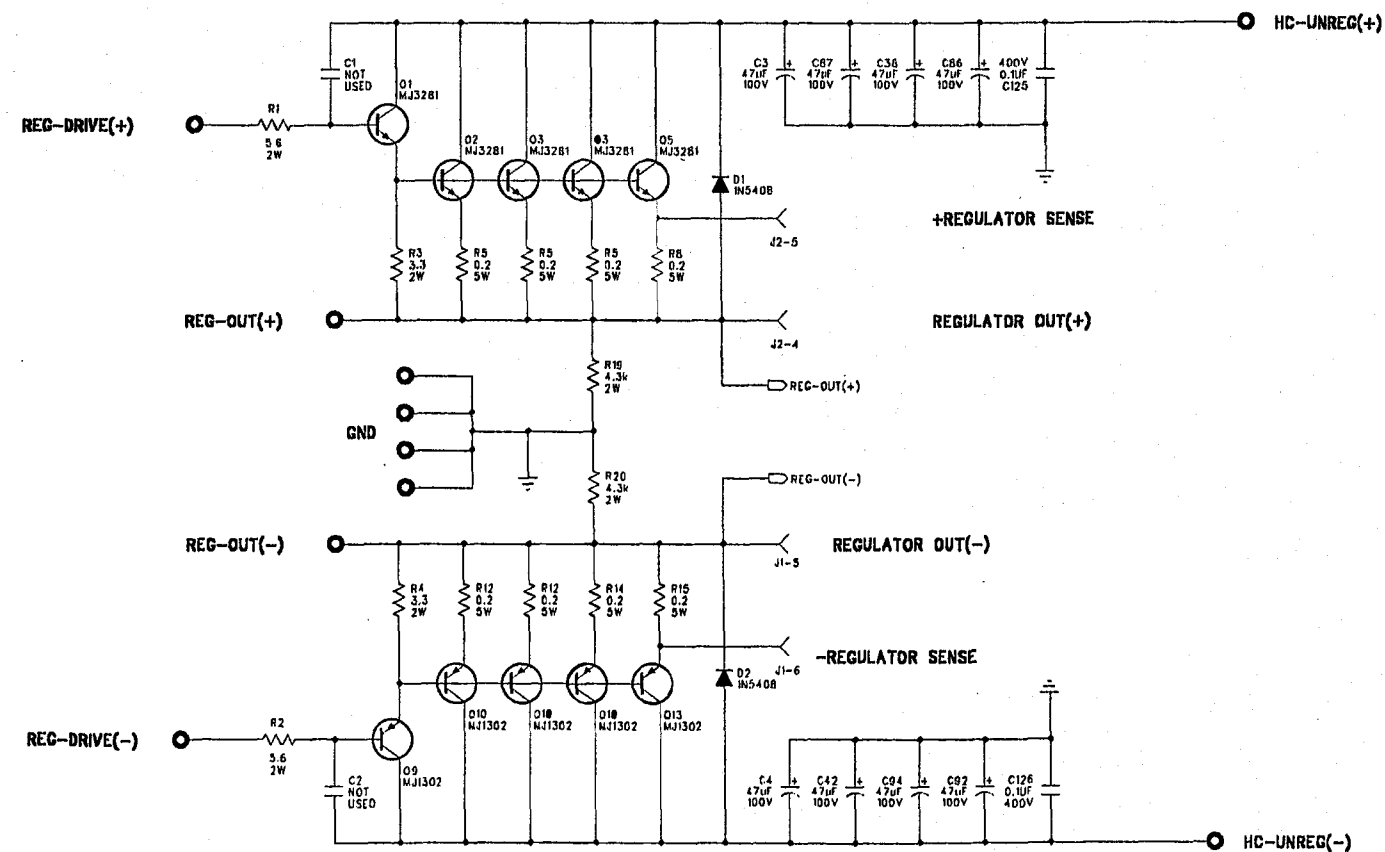
DATE:	12-02-98	SHEET 1	OF 1
-------	----------	---------	------



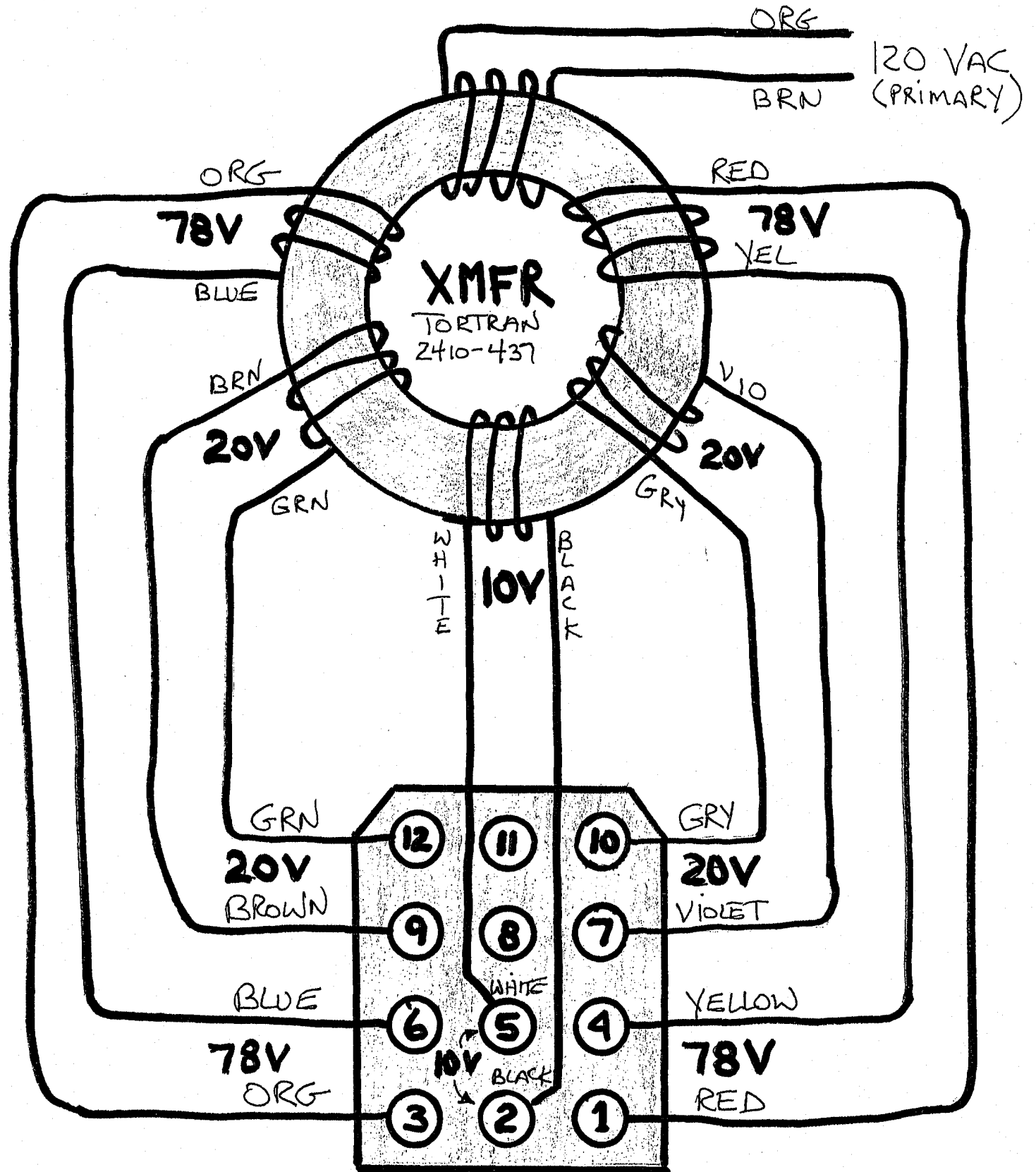


REVISION RECORD			KRELL Industries 48 Connors Road Orange, CT 06477		
LTR	COMMENTS	DATE	FILE	DRAWN BY	SIZE
-	Prototype	07-07-98		DJP	D
A	Production	11-15-98			
			FPB-200c/250Mc CONTROL BRD		
			DRAWING NO: 100-120-03		
			REV: A		
			DATE: 07-07-98		
			SHEET: 2 OF 2		









**PIN SIDE**  
(PINS FACING YOU)

VOLTAGES  
ARE  
Alternating  
CURRENT (AC)