



XQ series Service manual



XQ₃₀

REVISION 1.0 Oct.2007

3-WAY FLOORSTAND SPEAKER

Table of Content

System Specifications	2
Woofer Specifications	2
Mid-range Speaker Specifications	2
Tweeter Specifications	3
Schematic Diagram/ Exploded View of Crossover	4
Exploded View of Cabinet	6
Exploded View of Package	8
System Frequency Response Curve	10
System Impedance Curve	11

System Specifications

Frequency Response	48 ~ 55K Hz
Sensitivity	87dB @1W/m
Nominal Rating	15~150W
Dimension (W x D x H)	190x247 x860mm
Net Weight	14.8kg / pcs
Finish	Birds-eye maple, Khaya Mahogany and Piano BK

Woofer Specifications

Rated Impedance	4+/-0.8 ohms at 1V 400 Hz
Sweep Test	Sine Wave 5V at 20-20K Hz
Resonant Frequency (Fo)	55+/- 20%Hz at 1V
Sensitivity	88+/-2 dB/W/m
Frequency Response	Fo - 8K Hz
Rated Power Input	50W
Power Test	50W RMS/Channel (The rated power is verified by performing power handling test by feeding rated output with IEC268-5 for 4 hours)
Heat Test	60 °C / % R.H. 24 hours
Humidity Test	40 °C 90~95% R.H. 24 hours
Main Magnet	Ø80 x Ø40x 15mm Ferrite
Bucking magnet	Ø70x Ø32 x 10mm Ferrite
Voice Coil Bobbin Material	Black kapton
Cone Material	Paper
Surround Material	Rubber

Mid-range Speaker Specifications

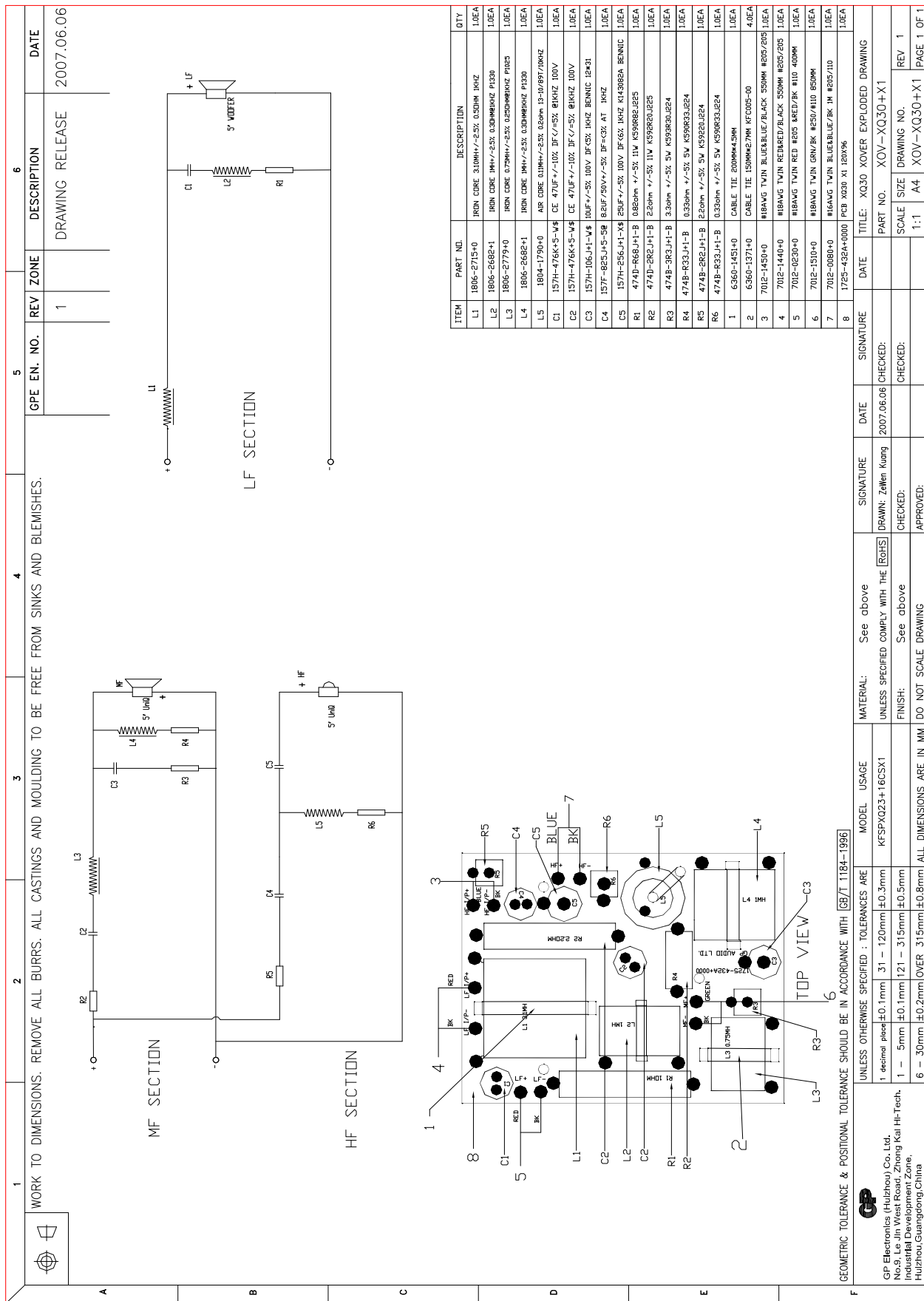
Rated Impedance	4+/-0.8 ohms at 1V 400 Hz
Sweep Test	Sine Wave 5V at 20-20K Hz
Resonant Frequency (Fo)	60 +/- 8 Hz at 1V
Sensitivity	88+/-2 dB/W/m
Frequency Response	Fo - 8K Hz
Rated Power Input	50W
Power Test	50W RMS/Channel with Q1 Xover (The rated power is verified by performing power

	handling test by feeding rated output with IEC268-5 for 4 hours)
Heat Test	60 °C / % R.H. 24 hours
Humidity Test	40 °C 90~95% R.H.24 hours
Main Magnet	Ø80 x Ø40 x 15mm Ferrite
Bucking Magnet	Ø70 x Ø32x 10mm Ferrite
Voice Coil Bobbin Material	BLACK KAPTON
Cone Material	PP Cone
Surround Material	Rubber

Tweeter Specifications

Rated Impedance	3 +/- 0.6 ohms at 1V 3K Hz
Sweep Test	Sine Wave 1V at 1K~20K Hz
Sensitivity	86dB/W/m
Frequency Response	Fo--18K Hz
Rated Power Input	50W
Power Test	50W RMS/Channel with Q1 Xover (The rated power is verified by performing power handling test by feeding rated output with IEC268-5 for 4 hours)
Heat Test	60 °C / % R.H. 8 hours
Humidity Test	40 °C 90% R.H. 8 hours
Voice Coil Bobbin Material	Kapton
Dome Material	Aluminum

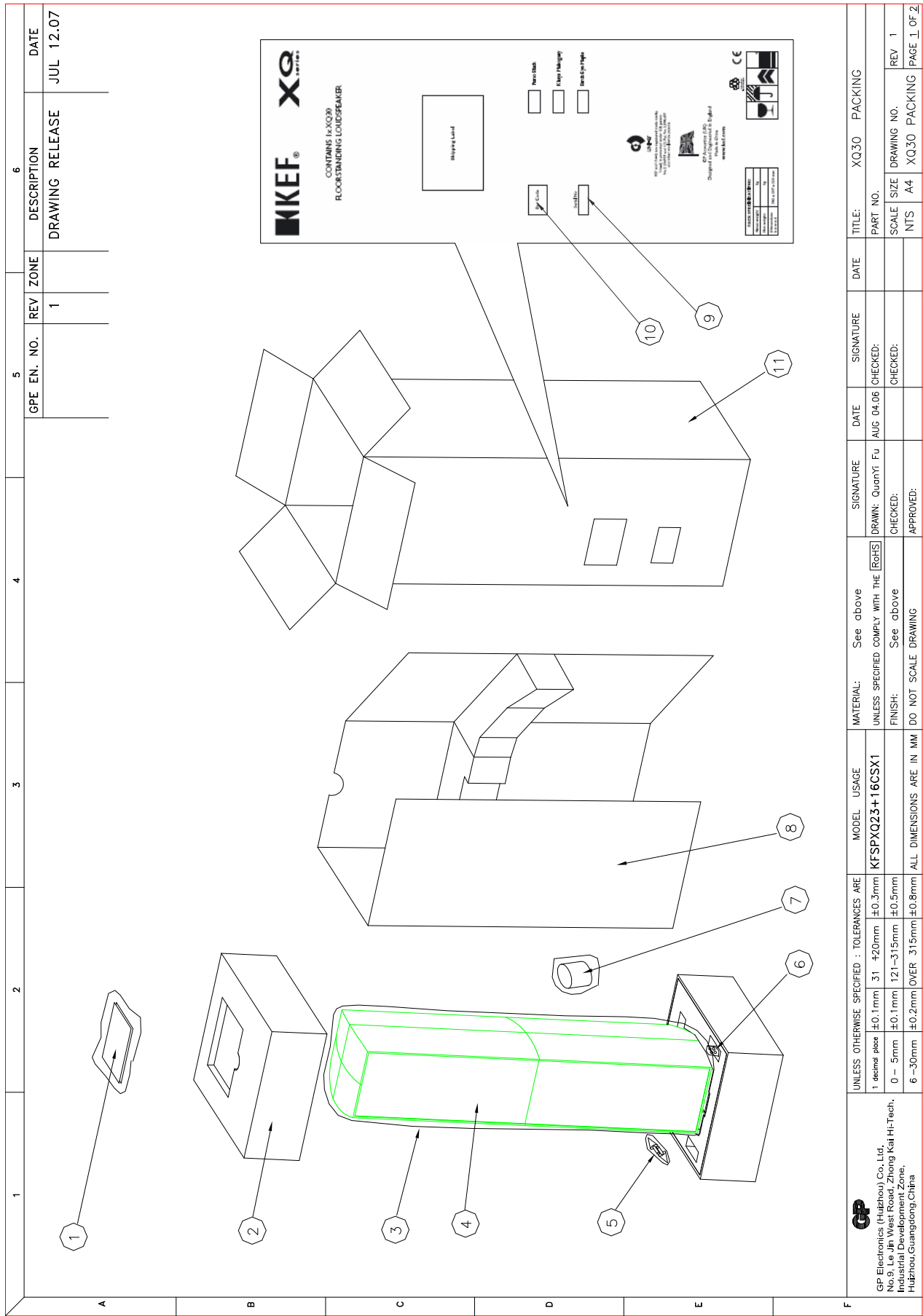
4



A	1		2		3		4		5		6	
	GP#	EN. NO.	REV	ZONE	DESCRIPTION	DATE	GP#	EN. NO.	REV	ZONE	DESCRIPTION	DATE
			1		DRAWING RELEASE	JUL 02.07						

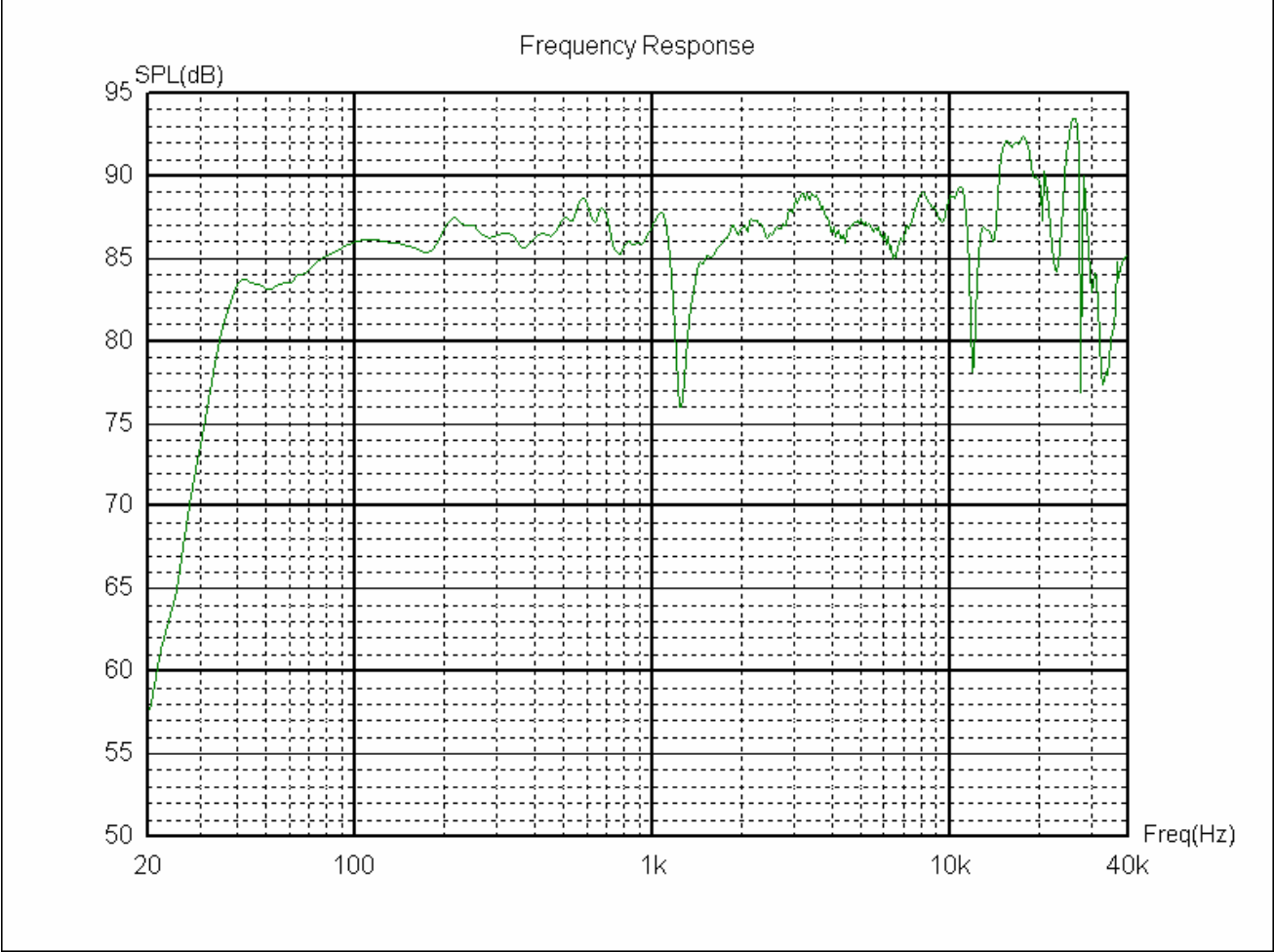
B	KFSPOXQ23+16CSX1											
	ITEM	DESCRIPTION	PART NUMBER	QTY	KFSPOXQ23+16CSX5							
	1	CAB XQ30 PIANO BK	1419-0950+0	1	1	CAB XQ30 BIRDS EYE MAPLE	1419-0951+0	1	1	CAB XQ30 KHAYA MAHOGANY	1419-0952+0	1
	2	5 INCH UNIQ XQ10	UNIQ-XQ10	1	2	5 INCH UNIQ XQ10	UNIQ-XQ10	1	2	5 INCH UNIQ XQ10	UNIQ-XQ10	1
	3	SP1533 5" 41DHM L	8900-6461+0	1	3	SP1533 5" 41DHM L	8900-6461+0	1	3	SP1533 5" 41DHM L	8900-6461+0	1
	4	FRONT BAFFLE XQ3	1422-0510+0	1	4	FRONT BAFFLE XQ3	1422-0510+0	1	4	FRONT BAFFLE XQ3	1422-0510+0	1
	5	XOVER XQ30	XQ10-XQ30+X1	1	5	XOVER XQ30	XQ10-XQ30+X1	1	5	XOVER XQ30	XQ10-XQ30+X1	1
	6	WOIDD GRILLE XQ30	1419-0960+0	1	6	WOIDD GRILLE XQ30	1419-0960+0	1	6	WOIDD GRILLE XQ30	1419-0960+0	1
	7	PORT TUBE FOR XQ	4158-9140+0	1	7	PORT TUBE FOR XQ	4158-9140+0	1	7	PORT TUBE FOR XQ	4158-9140+0	1
	8	TERMINAL PANEL XQ30	4134-5909+0	1	8	TERMINAL PANEL XQ30	4134-5909+0	1	8	TERMINAL PANEL XQ30	4134-5909+0	1
	9	ACOUSTIC MATERIAL	4153-0841+0	7	9	ACOUSTIC MATERIAL	4153-0841+0	7	9	ACOUSTIC MATERIAL	4153-0841+0	7
	10	MA SCREW M4*25 BK	2901-4025+K400	8	10	MA SCREW M4*25 BK	2901-4025+K400	8	10	MA SCREW M4*25 BK	2901-4025+K400	8
	11	ELIPSE BADGE XQ10	2150-6061+0	1	11	ELIPSE BADGE XQ10	2150-6061+0	1	11	ELIPSE BADGE XQ10	2150-6061+0	1
	12	GASKET PORT TUBE	4149-9481+0	1	12	GASKET PORT TUBE	4149-9481+0	1	12	GASKET PORT TUBE	4149-9481+0	1
	13	FRONT METAL FOOT XQ10 BK	1422-6281+0	2	13	FRONT METAL FOOT XQ10 BK	1422-6281+0	2	13	FRONT METAL FOOT XQ10 BK	1422-6281+0	2
	14	REAR METAL FOOT	1422-6271+0	2	14	REAR METAL FOOT	1422-6271+0	2	14	REAR METAL FOOT	1422-6271+0	2
	15	METAL FOOT LOCKING	1422-6291+0	2	15	METAL FOOT LOCKING	1422-6291+0	2	15	METAL FOOT LOCKING	1422-6291+0	2
	16	RUB-SIEM BUMPER	4160-0930+0	8	16	RUB-SIEM BUMPER	4160-0930+0	8	16	RUB-SIEM BUMPER	4160-0930+0	8
	17	KEF BADGE ON BAFFLE 13MM	2150-6071+0	1	17	KEF BADGE ON BAFFLE 13MM	2150-6071+0	1	17	KEF BADGE ON BAFFLE 13MM	2150-6071+0	1
	18	GASKET WOOFER	4149-9471+0	2	18	GASKET WOOFER	4149-9471+0	2	18	GASKET WOOFER	4149-9471+0	2
	19	MAGNET BRIDGE FO	4159-1130+0	16	19	MAGNET BRIDGE FO	4159-1130+0	16	19	MAGNET BRIDGE FO	4159-1130+0	16
	20	NEO MAG 10*2 N35	4104-4821+0	16	20	NEO MAG 10*2 N35	4104-4821+0	16	20	NEO MAG 10*2 N35	4104-4821+0	16
	21	ME SCREW M3.5*16	2912-3516+3000	4	21	ME SCREW M3.5*16	2912-3516+3000	4	21	ME SCREW M3.5*16	2912-3516+3000	4
	22	BINDING POST LOW	4124-0210+0	4	22	BINDING POST LOW	4124-0210+0	4	22	BINDING POST LOW	4124-0210+0	4
	23	BINDING POST UPP	4124-0200+0	4	23	BINDING POST UPP	4124-0200+0	4	23	BINDING POST UPP	4124-0200+0	4
	24	TERMINAL CAP FOR QMK100206	4124-0220+1	4	24	TERMINAL CAP FOR QMK100206	4124-0220+1	4	24	TERMINAL CAP FOR QMK100206	4124-0220+1	4
	25	TERMINAL BODY FOR QX100207	4124-0230+0	4	25	TERMINAL BODY FOR QX100207	4124-0230+0	4	25	TERMINAL BODY FOR QX100207	4124-0230+0	4
	26	SHORTING LINK BK	7012-1700+1	1	26	SHORTING LINK BK	7012-1700+1	1				

Exploded View of Package



8

System Frequency Curve



System Impedance Curve

