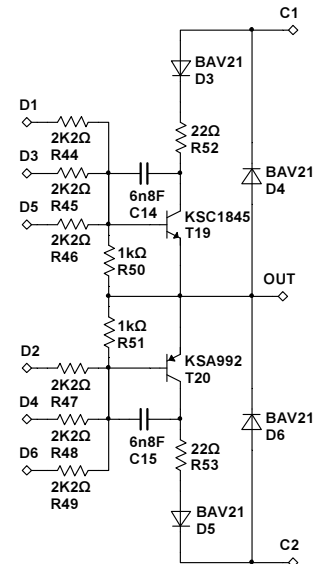
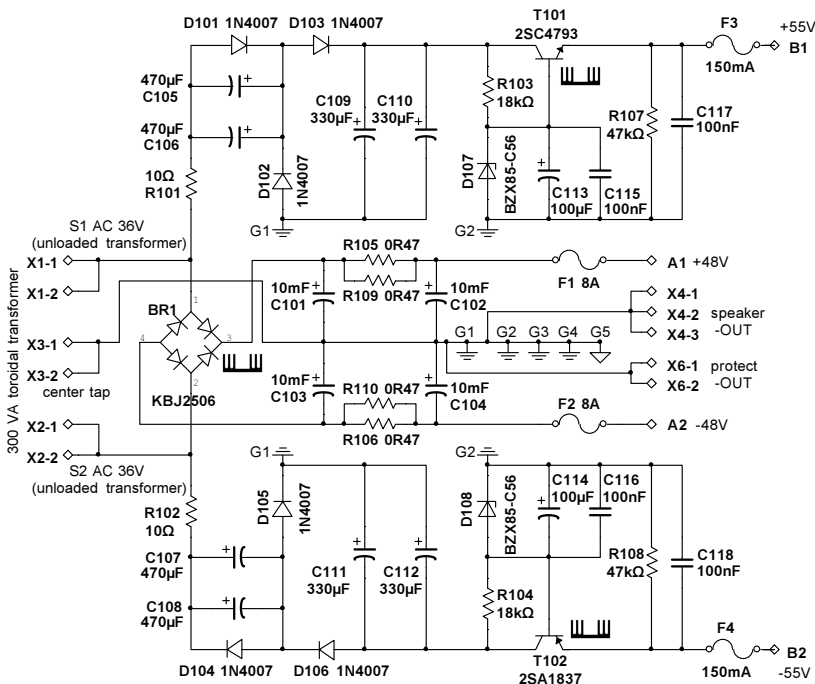
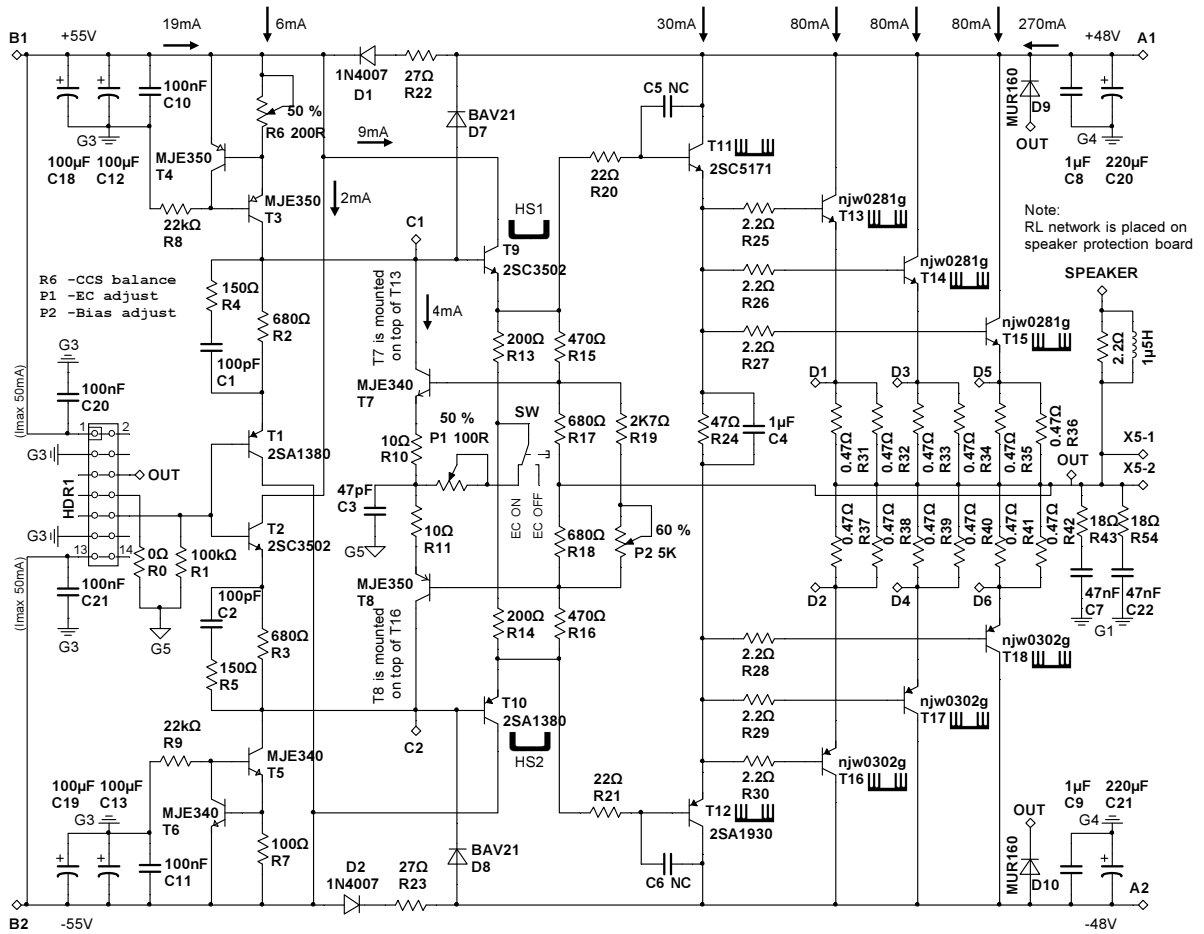


K200

200W@4 class AB bipolar buffer amplifier with HEC

schematic v1.6 (req. pcb v2.3)

e2000apc@gmail.com



MAIN HEAT SINK



TO220 HEAT SINK

TRANSISTOR

KSC1845/KSA992

MJE340/MJE350
2SC2705/2SA1145
2SC3502/2SA1380

2SC5171/2SA1930
2SC4793/2SA1837

NJW0281G/NJW0302G

PINOUTS

ECB

ECB

BCE

BCE