

10-(3) Tonearm Ass'y

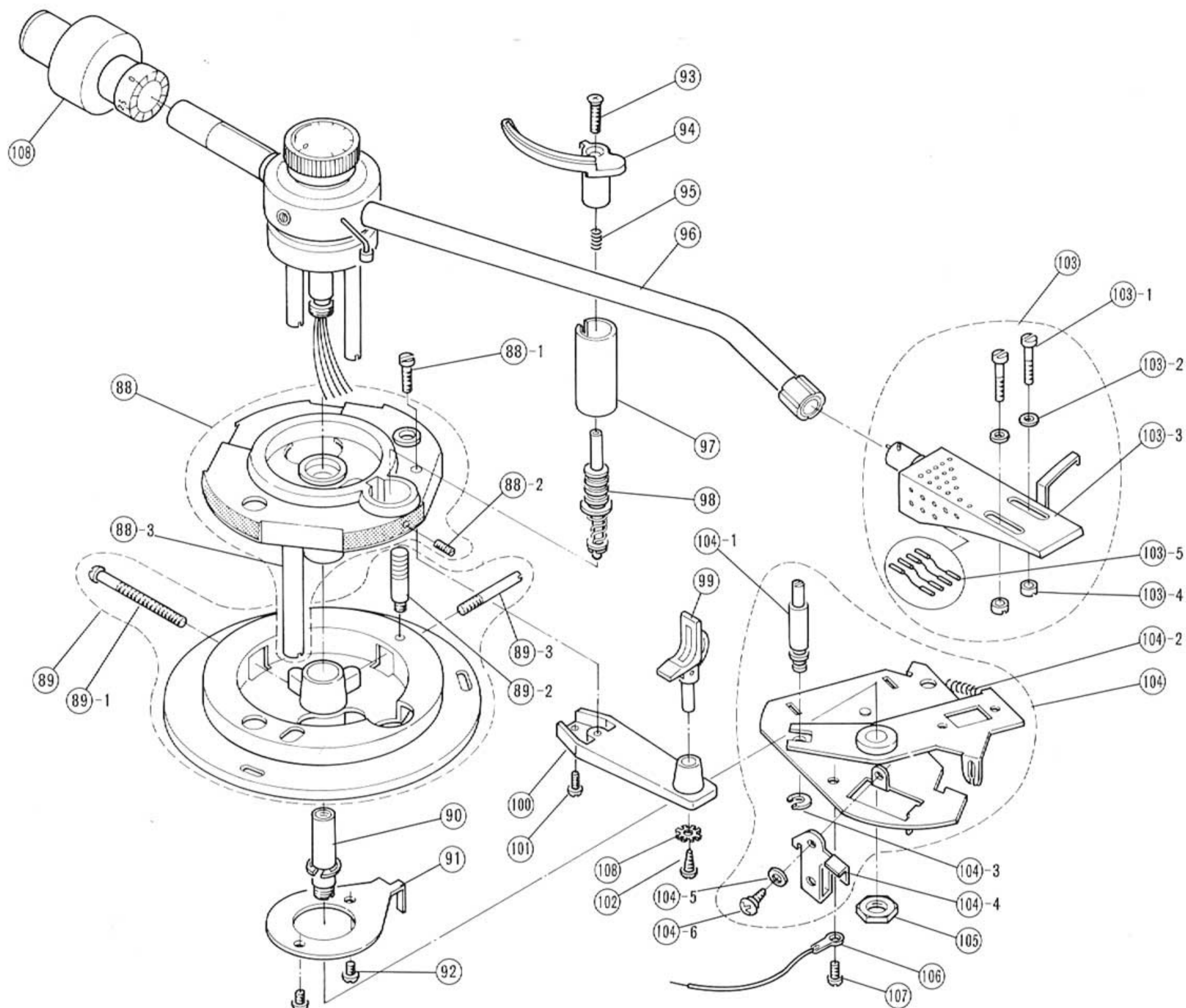


Fig. 34

Item No.	Part Number	Description
87	E34253-002	Main weight ass'y
88	E35446-001	Tonearm base sub ass'y
88-1	E60540-002	Screw
88-2	YRS300MS	Set screw
88-3	E65228-001	Stud
89	E35442-001	Tonearm base ass'y
89-1	SPSP4050AS	Screw
89-2	E65239-001	Indicator
89-3	E65238-001	Screw
90	E61263-002	Nut ass'y
91	E35441-001	Interruptor
92	LPSP3006ZS	Screw
93	SSBP3016RS	"
94	E65243-001	Tonearm lifter ass'y
95	E49649-002	Spring
96	E35513-001	Arm ass'y
97	E65232-001	Cylinder

Item No.	Part Number	Description
98	E65237-001	Piston ass'y
99	E65230-001	Rest bracket
100	E65230-001	"
101	LPSP2605ZS	Ass'y screw
102	SBSB2606Z	Tapping screw
103	See page 20.	Headshell ass'y
104	E35430-001	Base sub ass'y
104-1	E65195-001	Adjustor
104-2	E65193-001	Spring
104-3	52514	Spring washer
104-4	E65194-001	Cueing lever
104-5	Q03091-137	Washer
104-6	G41507-2	Tapping screw
105	E65240-001	Nut
106	E65230-001	Lug ass'y
107	LPSP3006ZS	Ass'y screw
108	WBS2600Z	Washer