

Using a decompensated op amp for improved performance

By Jim Karki

Systems Specialist, High-Speed Amplifiers

Introduction

If your application requires optimum noise, slew rate, and distortion performance, you may want to use a decompensated or uncompensated op amp.

The THS4011 op amp uses emitter degeneration and dominant pole compensation to compensate the amplifier internally so that external compensation is not required. Placing resistors in the emitter leads of a differential amplifier pair results in negative feedback, which reduces the gain of the stage. This is referred to as emitter degeneration. A capacitor

Figure 1. Open-loop gain and phase—THS4011 and THS4021

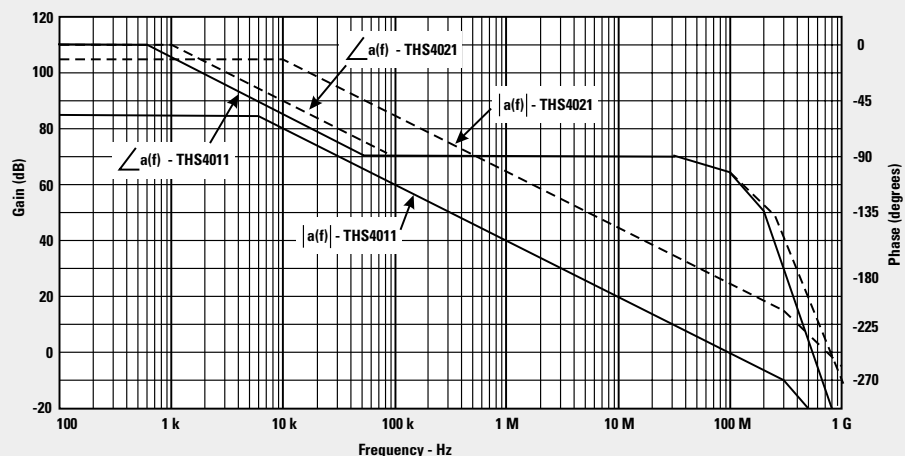


Figure 2. Model of op amp with negative feedback

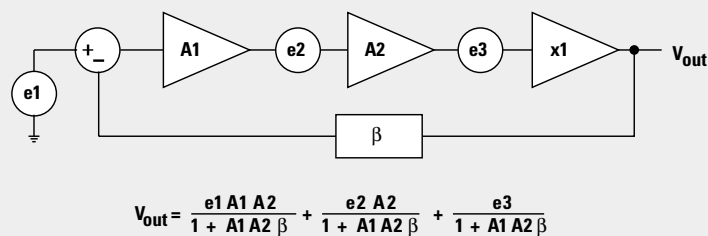
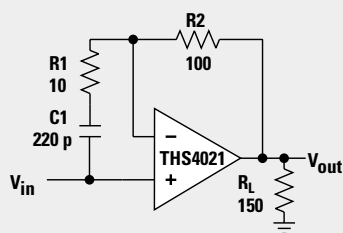


Figure 3. Externally compensated THS4021—non-inverting amplifier



Circuit a

$$\beta = \frac{1 + sC1R1}{1 + sC1(R1 + R2)}$$

$$\frac{V_{out}}{V_{in}} = \frac{1}{1 + \frac{1}{a(f)\beta}} = 1 \text{ if } a(f)\beta \gg 1$$

placed in the intermediate stage of the amplifier provides dominant pole compensation.

The THS4021 does not use emitter degeneration in the input pair, and the dominant pole capacitance is reduced. The THS4021 is termed a decompensated op amp. Decompensation means the compensation is reduced, as opposed to uncompensated, where no compensation at all is used. The result is:

- higher open-loop gain,
- increased slew rate,
- lower input referred noise, and
- required external compensation for unity gain stability.

Figure 1 shows the open-loop gain, magnitude $|a(f)|$ and phase $\angle a(f)$, of the THS4011 and THS4021. Note that $|a(f)|$ is about 20 dB higher for the THS4021; and note the two spots on the graph where, for THS4011,

$$|a(f)| = 0 \text{ dB and } \angle a(f) \approx -105^\circ$$

and, for THS4021,

$$|a(f)| = 20 \text{ dB and } \angle a(f) \approx -130^\circ$$

So the THS4011 has 75° of phase margin at a closed-loop gain of +1 and requires no external compensation. The THS4021 has 50° of phase margin when compensated by giving it a closed-loop gain of +10 (or –9). If a gain lower than this is required, another means of compensation is used.

This article shows how to compensate the THS4021 externally for stable operation while maintaining a closed-loop gain of +1 or -1. To compare distortion, transient response, and noise performance, the THS4011 and THS4021, with external compensation, are tested. Also, practical component selection is considered. A quick presentation about feedback is given, but it is assumed that the reader is familiar with feedback theory, stability criteria, and compensation. If not, please see References 1 and 2.

Feedback and errors

Feedback theory predicts that error sources within an amplifier are reduced if the loop gain is increased.

Figure 2 shows a model of an op amp with negative feedback. The input stage is A1, the intermediate stage is A2, the output stage is the x1 buffer, and β is the feedback factor. The open-loop gain is $a(f) = A1A2$, and the loop gain is $a(f)\beta = A1A2\beta$. $e1$, $e2$, and $e3$ are generalized error sources within the op amp. The following discussion analyzes the output response due to the individual error sources.

$e1$ represents an error source at the input. It is amplified by the full open-loop gain of the amplifier. Setting all other sources to 0, if there were no feedback, $V_{out} = e1A1A2$, but with feedback,

$$V_{out} = \frac{e1}{\beta + \frac{1}{A1A2}} \approx \frac{e1}{\beta} \quad \text{if } A1A2 \gg 1$$

$e2$ represents an error source at the intermediate stage. It is amplified only by A2. Setting all other sources to 0, if there were no feedback, $V_{out} = e2A2$, but with feedback,

$$V_{out} = \frac{e2}{A1\beta + \frac{1}{A2}} \approx \frac{e2}{A1\beta} \quad \text{if } A2 \gg 1$$

$e3$ represents an error source at the output stage. It is buffered by a gain of +1 to the output. Setting all other sources to 0, if there is no feedback, $V_{out} = e3$, but with feedback,

$$V_{out} = \frac{e3}{1 + A1A2\beta} \approx 0 \quad \text{if } A1A2\beta \gg 1$$

In general, feedback has no effect on reducing errors generated at the input, but it becomes effective with errors generated within the amplifier and is most effective in reducing errors at the output. By taking advantage of the increased open-loop gain of the THS4021, one can expect to reduce distortion products generated in the intermediate and output stages of the op amp.

Test circuits

Figures 3–7 show the test circuits. Circuits a, b, and c show the THS4021 with external

Continued on next page

Figure 4. Two-capacitor, externally compensated THS4021—inverting amplifier

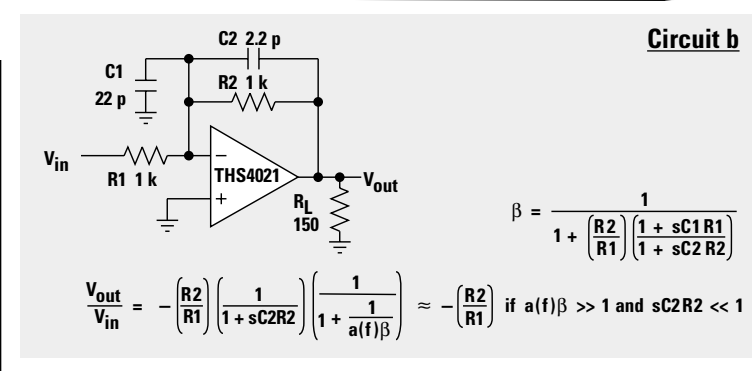


Figure 5. One-capacitor, externally compensated THS4021—inverting amplifier

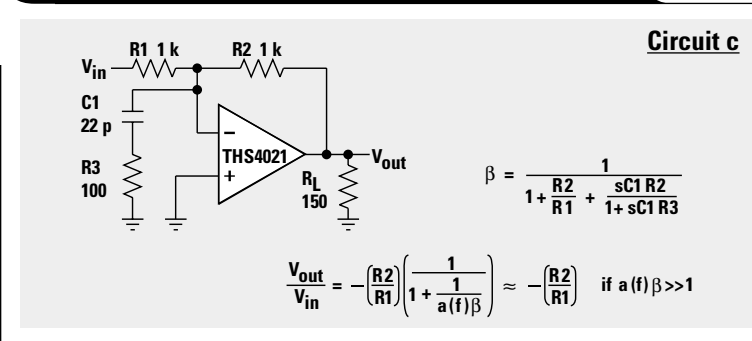


Figure 6. Internally compensated THS4011—non-inverting amplifier

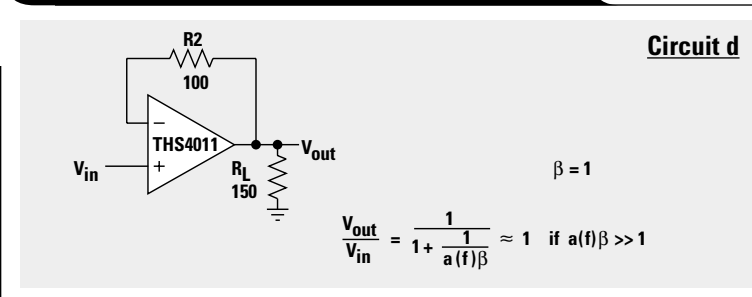
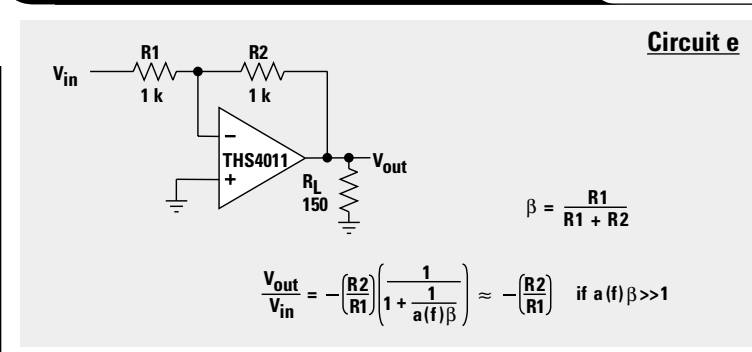


Figure 7. Internally compensated THS4011—inverting amplifier



Continued from previous page

compensation. Circuits d and e show the THS4011. All circuits have ideal gains of either +1 or -1. The test data presented later is based on testing these circuits with the component values shown.

Analysis

In order to determine stability of circuits a, b, and c, we are interested in the loop gain, $a(f)\beta$, of the circuits. Figure 8 shows a Bode plot of the open-loop gain, $a(f)$, of the THS4021 op amp and the inverse of the feedback factor, $1/\beta$.

$a(f)\beta$ can be seen graphically on the Bode plot as the difference between the $a(f)$ and $1/\beta$ curves. Stability is indicated by the rate of closure at the intersection of $a(f)$ and $1/\beta$.

Figure 9 shows the same information from a slightly different view, with magnitude and phase of $a(f)\beta$. This makes it easier to determine phase margin—approximately 45°.

Design

Design means choosing the placement of the poles and zeros in the feedback network. The following equations apply to the points noted on the Bode plot in Figure 8.

$$\text{Circuit a: } Z_a = \frac{1}{2\pi C_1(R_1 + R_2)} \quad \text{and} \quad P_a = \frac{1}{2\pi C_1 R_1}$$

$$\text{Circuit b: } Z_b = \frac{2}{2\pi C_1 R_1} \quad \text{and} \quad P_b = \frac{1}{2\pi C_2 R_2}$$

(given $R_1 = R_2$)

$$\text{Circuit c: } Z_c = \frac{2}{2\pi C_1 R_2} \quad \text{and} \quad P_c = \frac{1}{2\pi C_1 R_3}$$

(given $R_1 = R_2$)

The poles and zeros are chosen to obtain the largest possible excess loop gain over the maximum frequency range and still maintain stability. The feedback must be reduced at high frequency in the externally compensated circuits so that $1/\beta = 20$ dB at the point where it intersects $a(f)$. This satisfies the minimum gain of 10 requirement for stability for the THS4021. That is to say, what is really meant by specifying a minimum gain of 10 is that $1/\beta \geq 10$ (or 20 dB) at its intersection with $a(f)$.

Start the design by choosing the pole location and be sure to give a margin for process variations. In the examples shown here, the pole is chosen at about half the frequency at which $a(f)$ equals the minimum gain specification (20 dB). The component values are calculated, and then convenient standard values are selected.

Once the pole is located, the zero is found by dividing the pole frequency by the difference between minimum gain specification of the amplifier and $1/\beta$ at low frequency—i.e.,

Figure 8. Bode plot of open-loop and inverse feedback factors of test circuits

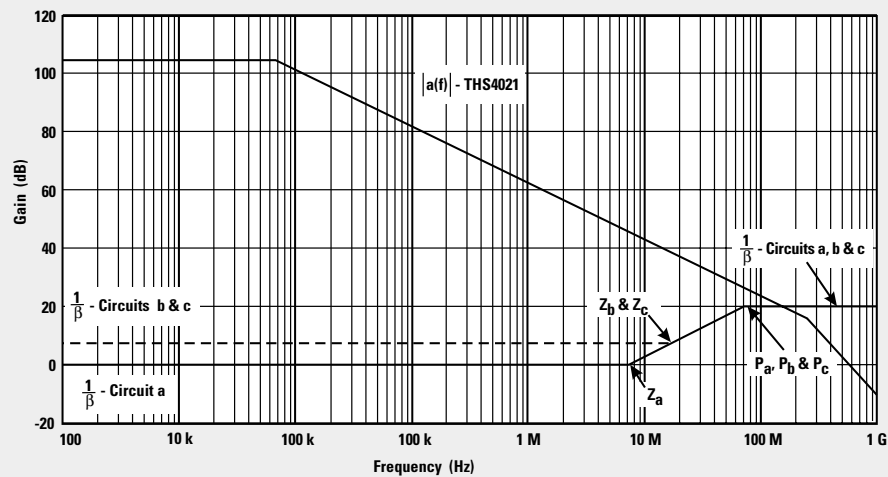
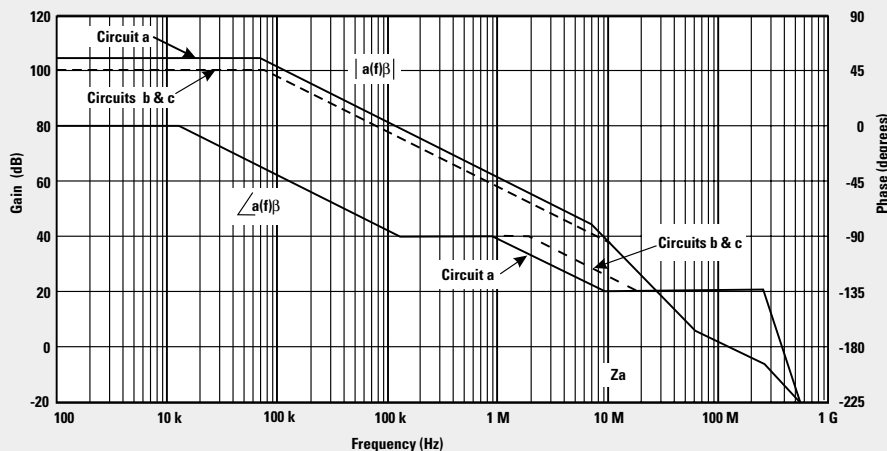


Figure 9. Bode plot of magnitude and phase of $a(f)\beta$ —Circuits a, b, and c



$$Z_a = \frac{P_a}{10^{20}}, Z_b = \frac{P_b}{10^{20}}, \text{ and } Z_c = \frac{P_c}{10^{20}}$$

Alternately, you can look at the circuits with a little intuition and arrive at the following relationships: In Circuit a, the high-frequency feedback factor is set by the ratio of R1 to R2. Therefore $R1 = R2/10$. In Circuit b, the high-frequency feedback factor is set by the ratio of C1 to C2. Therefore $C1 = C2 \times 10$. In Circuit c, the high-frequency feedback factor is set by the ratio of $R1 \parallel R3$ to R2. Therefore $R3 = R2/10$. So once the pole is located, the complete solution is quickly found.

Component selection

Selection of component values should be looked at with an eye to practicality. Since the amplifiers are high-speed, capable of operation into the hundreds of MHz, resistance values need to be kept low so that parasitic capacitors do not overly influence results. The designer should be careful about resistor values that are too low, which will load the amplifier too much. The following comments are based on observations made while testing the circuits.

- In Circuit a, feedback resistor values in the range of 100 Ω to 500 Ω provided the best results. Values of 49.9 Ω and 1 k Ω resulted in diminished performance.
- In Circuits b and c, feedback resistor values in the range of 200 Ω to 1 k Ω provided the best results. A value of 100 Ω resulted in diminished performance. Values above 1 k Ω result in capacitor values that are too small (less than 2.2 pF*) and were not tested.

*Approximately 0.6-pF parasitic is measured across the feedback so that parasitic capacitance on the EVM becomes a significant percent when low-value capacitors are used.

THD

The next question to answer is what actually happens when the circuits are tested in the lab. The circuits are built and tested using the THS4011 and THS4021 EVMs, available from Texas Instruments. Figure 10 shows the basic test set-up used to measure THD.

The filters are sixth-order elliptic filters that have approximately 80-dB out-of-band rejection. The purpose of the low-pass filter, LPF, between the generator and the test circuit is to reject harmonics coming from the sine generator. The high-pass filter, HPF, between the test circuit and the spectrum analyzer is there to reject the high-amplitude fundamental and to prevent generation of harmonics in the input circuitry of the spectrum analyzer. Table 1 shows the fundamental frequencies and corner frequencies of the filters used.

Table 1. Filter cut-off frequencies

FUNDAMENTAL (Hz)	LPF (Hz)	HPF (Hz)
1 M	1.1 M	1.9 M
2 M	2.2 M	3.8 M
4 M	4.4 M	7.6 M
8 M	8.8 M	15.2 M
16 M	17.6 M	30.4 M

Figure 11 shows the test results for the non-inverting amplifiers. Circuit a has better distortion performance than Circuit d at lower frequencies, but the advantage

Continued on next page

Figure 10. THD test set-up

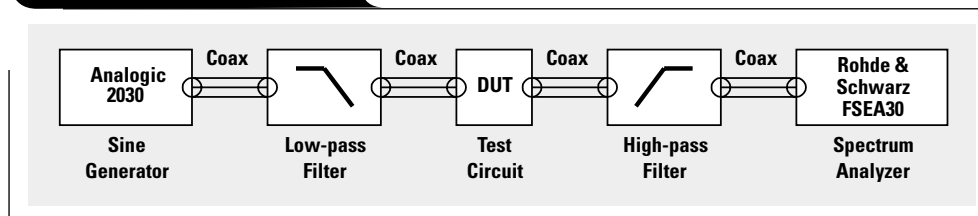
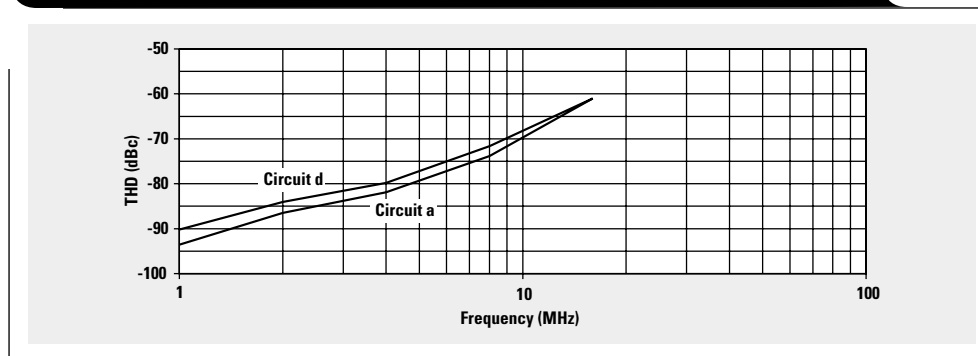


Figure 11. THD vs. frequency—non-inverting amplifiers, $V_{out} = 2V_{p-p}$



Continued from previous page

decreases at higher frequencies. Figure 12 shows the test results for the inverting amplifiers. Circuits b and c have better distortion performance than Circuit e across all the frequencies tested.

In general, the externally compensated THS4021 circuits have better distortion performance due to their increased loop gain compared to the circuits using the internally compensated THS4011.

Transient response

Figures 13 and 14 show the transient response of Circuits a, b, d, and e resulting from a positive 2-V input pulse with 0.9-ns rise and fall times. Circuit c is not shown but is very similar to Circuit b.

Circuits a and d appear to have similar slew rates, but Circuit a responds more quickly to the input pulse. Circuit a exhibits about 30% overshoot, but settling times appear to be about the same.

Circuit b reacts more quickly to the input pulse and has approximately twice the slew rate of Circuit e. It appears to settle slightly faster as well.

Noise

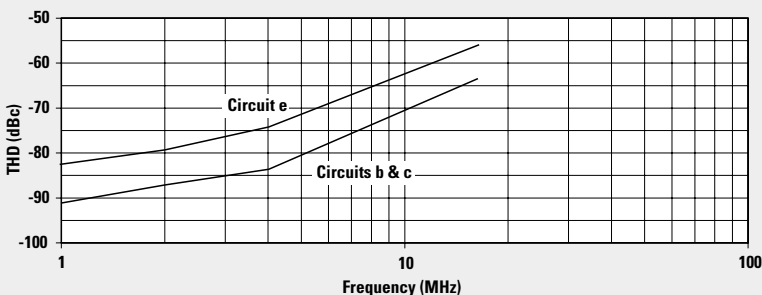
The input-referenced white noise specification for the op amps is

$$\frac{1.5 \text{ nV}}{\sqrt{\text{Hz}}}$$

for the THS4021 and

$$\frac{7.5 \text{ nV}}{\sqrt{\text{Hz}}}$$

Figure 12. THD vs. frequency—inverting amplifiers, $V_{\text{out}} = 2V_{\text{p-p}}$



for the THS4011. Given that the circuits have essentially the same noise gain over most of the frequencies of operation and that the resistor noise is about the same, the noise performance should be 5 times better for the externally compensated circuits.

To measure the noise directly with unity gain is not very practical. For comparison purposes, noise is measured by configuring each op amp in non-inverting gain of 1000 and measuring the output with an RMS voltmeter. Figure 15 shows the test set-up.

The expected output noise is estimated by the formula:

$$E_n = e_n \times A \times \sqrt{\text{LPF}}$$

E_n is the RMS output noise, e_n is the input-referenced white noise specification for the op amp, A is the ideal closed-loop gain, and LPF is the corner frequency of the low-pass filter (137.5 kHz).

Estimated noise using the THS4011 is 2.78-mV RMS, and 2.47 mV is measured. Estimated noise using the THS4021 is 0.56-mV RMS, and 0.57 mV is measured. As expected, about a 5:1 ratio is seen.

Figure 13. Transient response—non-inverting amplifiers

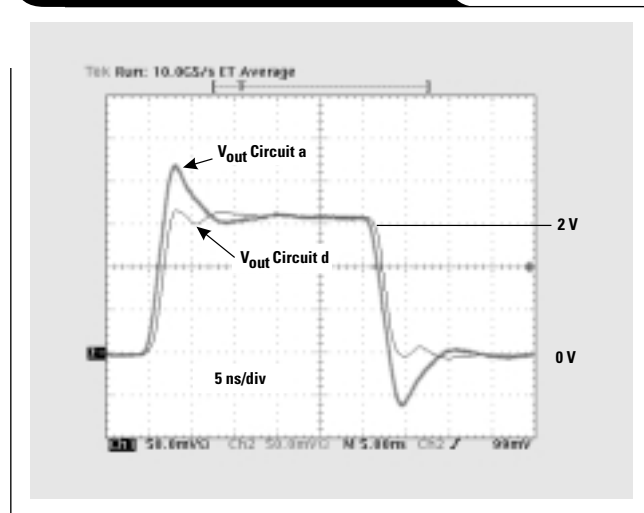
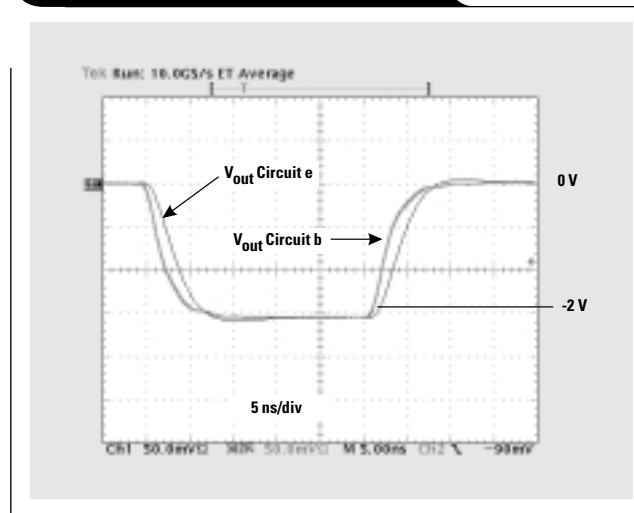


Figure 14. Transient response—inverting amplifiers



Conclusion

Five different circuits have been tested for distortion, transient response, and noise performance. By comparison of the non-inverting amplifiers, Circuit a vs. Circuit d, and inverting amplifiers, Circuits b and c vs. Circuit e, the following conclusions about using an externally compensated THS4021 vs. using the internally compensated THS4011 have been drawn (see Table 2).

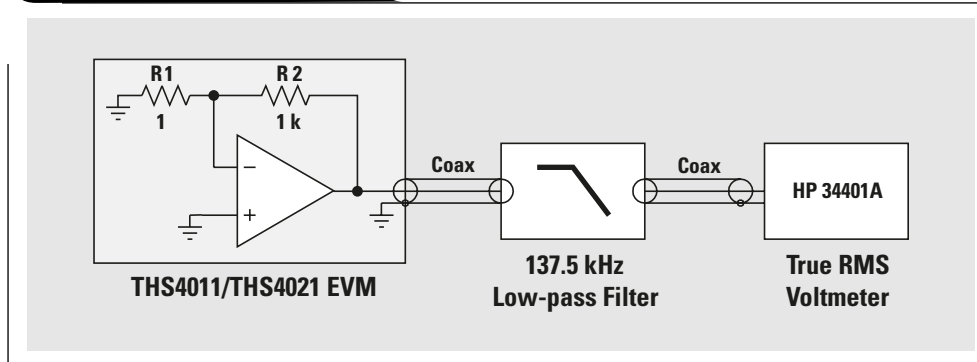
In the inverting amplifiers, Circuits b and c vs. Circuit e, significant improvement in THD performance was seen across the frequencies tested. There was no significant difference between Circuits b and c.

For the non-inverting amplifiers, Circuit a vs. Circuit d, improvement in THD performance was also seen but diminished with frequency, with no advantage seen at 16 MHz.

Transient performance showed mixed results. Slew rate and settling time were somewhat better when comparing the inverting topologies but appeared to be little changed for the non-inverting amplifier. The non-inverting amplifier, Circuit a, showed considerable overshoot, which may be undesirable.

Given that the circuits have essentially the same noise gain over most of the frequencies of operation and that the resistor noise is about the same, the noise performance should be better for the externally compensated circuits. Lab data shows about a 5:1 ratio—in line with the difference in the noise specification of the op amps.

Figure 15. Noise test set-up



References

For more information related to this article, you can download an Acrobat Reader file at www-s.ti.com/sc/techlit/litnumber and replace "litnumber" with the **TI Lit. #** for the materials listed below.

Document Title

TI Lit.

1. "Feedback Amplifier Analysis Tools"sloa017
2. "Stability Analysis of Voltage-Feedback Op Amps"sloa020

Related Web sites

amplifier.ti.com

Get product data sheets at:

www.ti.com/sc/docs/products/analog/device.html

Replace *device* with ths4011 or ths4021

Table 2. Comparison of test results

CIRCUIT	DESCRIPTION	TEST PARAMETER	COMMENTS
a	THS4021 non-inverting amplifier with external compensation	Distortion	4-dB improvement seen at 1 MHz with decreased improvement at higher frequencies
		Transient response	Faster initial response, but comparable slew rate and settling time
		Noise	5x improvement
b	THS4021 inverting amplifier with two-capacitor external compensation	Distortion	7- to 9-dB improvement at all frequencies tested
		Transient response	Faster initial response, slew rate, and settling time
		Noise	5x improvement
c	THS4021 inverting amplifier with one-capacitor external compensation	Distortion	7- to 9-dB improvement at all frequencies tested
		Transient response	Faster initial response, slew rate, and settling time
		Noise	5x improvement

IMPORTANT NOTICE

Texas Instruments Incorporated and its subsidiaries (TI) reserve the right to make corrections, modifications, enhancements, improvements, and other changes to its products and services at any time and to discontinue any product or service without notice. Customers should obtain the latest relevant information before placing orders and should verify that such information is current and complete. All products are sold subject to TI's terms and conditions of sale supplied at the time of order acknowledgment.

TI warrants performance of its hardware products to the specifications applicable at the time of sale in accordance with TI's standard warranty. Testing and other quality control techniques are used to the extent TI deems necessary to support this warranty. Except where mandated by government requirements, testing of all parameters of each product is not necessarily performed.

TI assumes no liability for applications assistance or customer product design. Customers are responsible for their products and applications using TI components. To minimize the risks associated with customer products and applications, customers should provide adequate design and operating safeguards.

TI does not warrant or represent that any license, either express or implied, is granted under any TI patent right, copyright, mask work right, or other TI intellectual property right relating to any combination, machine, or process in which TI products or services are used. Information published by TI regarding third-party products or services does not constitute a license from TI to use such products or services or a warranty or endorsement thereof. Use of such information may require a license from a third party under the patents or other intellectual property of the third party, or a license from TI under the patents or other intellectual property of TI.

Reproduction of information in TI data books or data sheets is permissible only if reproduction is without alteration and is accompanied by all associated warranties, conditions, limitations, and notices. Reproduction of this information with alteration is an unfair and deceptive business practice. TI is not responsible or liable for such altered documentation.

Resale of TI products or services with statements different from or beyond the parameters stated by TI for that product or service voids all express and any implied warranties for the associated TI product or service and is an unfair and deceptive business practice. TI is not responsible or liable for any such statements.

Following are URLs where you can obtain information on other Texas Instruments products and application solutions:

Products

Amplifiers	amplifier.ti.com
Data Converters	dataconverter.ti.com
DSP	dsp.ti.com
Interface	interface.ti.com
Logic	logic.ti.com
Power Mgmt	power.ti.com
Microcontrollers	microcontroller.ti.com

Applications

Audio	www.ti.com/audio
Automotive	www.ti.com/automotive
Broadband	www.ti.com/broadband
Digital control	www.ti.com/digitalcontrol
Military	www.ti.com/military
Optical Networking	www.ti.com/opticalnetwork
Security	www.ti.com/security
Telephony	www.ti.com/telephony
Video & Imaging	www.ti.com/video
Wireless	www.ti.com/wireless

TI Worldwide Technical Support

Internet

TI Semiconductor Product Information Center Home Page
support.ti.com

TI Semiconductor KnowledgeBase Home Page
support.ti.com/sc/knowledgebase

Product Information Centers

Americas

Phone	+1(972) 644-5580	Fax	+1(972) 927-6377
Internet/Email	support.ti.com/sc/pic/americas.htm		

Europe, Middle East, and Africa

Phone			
Belgium (English)	+32 (0) 27 45 54 32	Netherlands (English)	+31 (0) 546 87 95 45
Finland (English)	+358 (0) 9 25173948	Russia	+7 (0) 95 7850415
France	+33 (0) 1 30 70 11 64	Spain	+34 902 35 40 28
Germany	+49 (0) 8161 80 33 11	Sweden (English)	+46 (0) 8587 555 22
Israel (English)	1800 949 0107	United Kingdom	+44 (0) 1604 66 33 99
Italy	800 79 11 37		
Fax	+49 (0) 8161 80 2045		
Internet	support.ti.com/sc/pic/euro.htm		

Japan

Fax			
International	+81-3-3344-5317	Domestic	0120-81-0036
Internet/Email	support.ti.com/sc/pic/japan.htm		
International	support.ti.com/sc/pic/japan.htm		
Domestic	www.tij.co.jp/pic		

Asia

Phone			
International	+886-2-23786800		
Domestic	Toll-Free Number		Toll-Free Number
Australia	1-800-999-084	New Zealand	0800-446-934
China	800-820-8682	Philippines	1-800-765-7404
Hong Kong	800-96-5941	Singapore	800-886-1028
Indonesia	001-803-8861-1006	Taiwan	0800-006800
Korea	080-551-2804	Thailand	001-800-886-0010
Malaysia	1-800-80-3973		
Fax	886-2-2378-6808	Email	tiasia@ti.com
Internet	support.ti.com/sc/pic/asia.htm		ti-china@ti.com

C011905

Safe Harbor Statement: This publication may contain forward-looking statements that involve a number of risks and uncertainties. These "forward-looking statements" are intended to qualify for the safe harbor from liability established by the Private Securities Litigation Reform Act of 1995. These forward-looking statements generally can be identified by phrases such as TI or its management "believes," "expects," "anticipates," "foresees," "forecasts," "estimates" or other words or phrases of similar import. Similarly, such statements herein that describe the company's products, business strategy, outlook, objectives, plans, intentions or goals also are forward-looking statements. All such forward-looking statements are subject to certain risks and uncertainties that could cause actual results to differ materially from those in forward-looking statements. Please refer to TI's most recent Form 10-K for more information on the risks and uncertainties that could materially affect future results of operations. We disclaim any intention or obligation to update any forward-looking statements as a result of developments occurring after the date of this publication.

Trademarks: All trademarks are the property of their respective owners.

Mailing Address: Texas Instruments
Post Office Box 655303
Dallas, Texas 75265

© 2005 Texas Instruments Incorporated