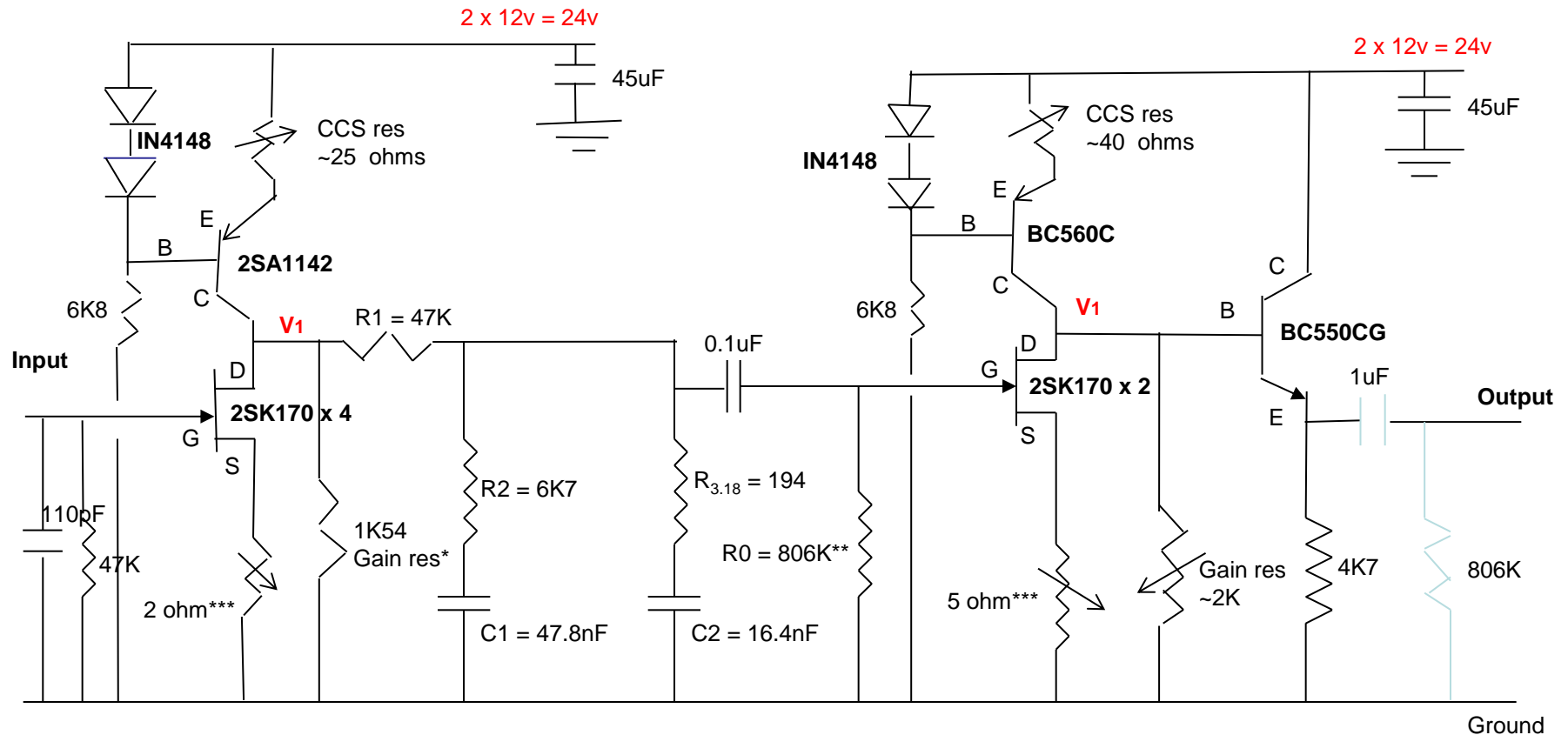


JFET Phono Stage with Passive Composite RIAA Network (CCS v4b)



Notes:

* The value of this "Gain" resistor defines the Zout of the JFETs and has to be added to R1, in the calculation for R1'.

** The value of R0 chosen has to be paralleled with the Zin of the following JFET (assumed 50Meg), in the calculation of R1'.

*** Rsource set to give 75-80% Idss. (NB: current affects gain.)

V1 is half supply (12v)

C2 includes Miller capacitance (30pf x gain)