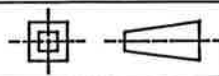
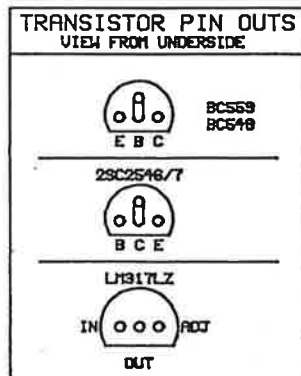


DRAWING NO.
3010 0890

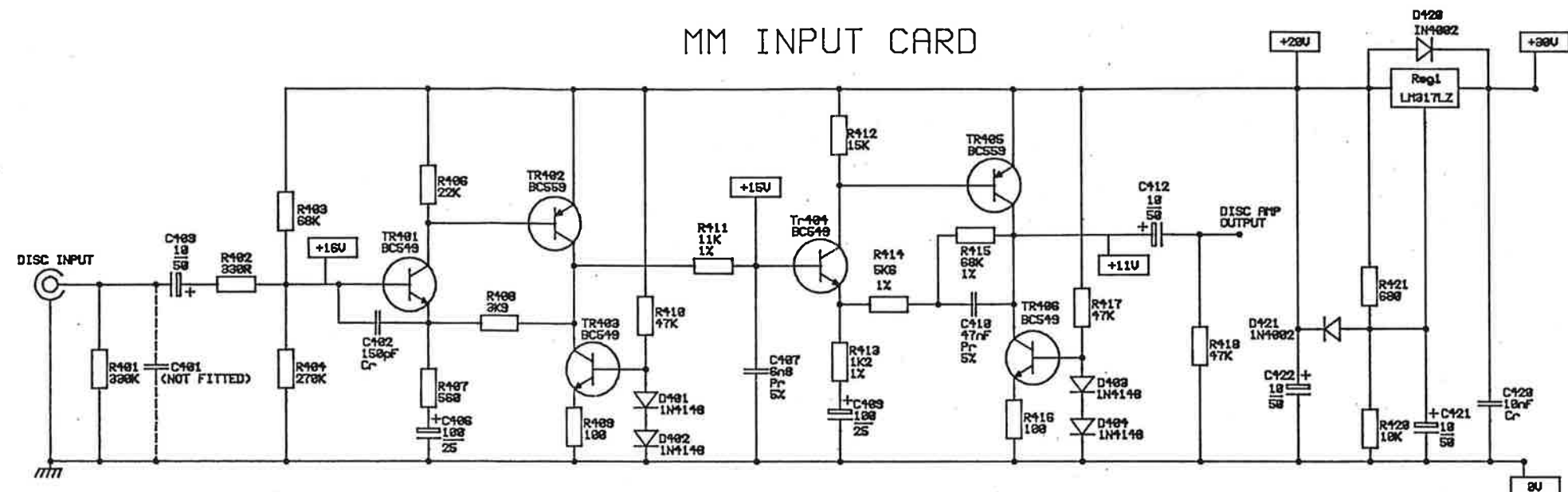
PROJECTION



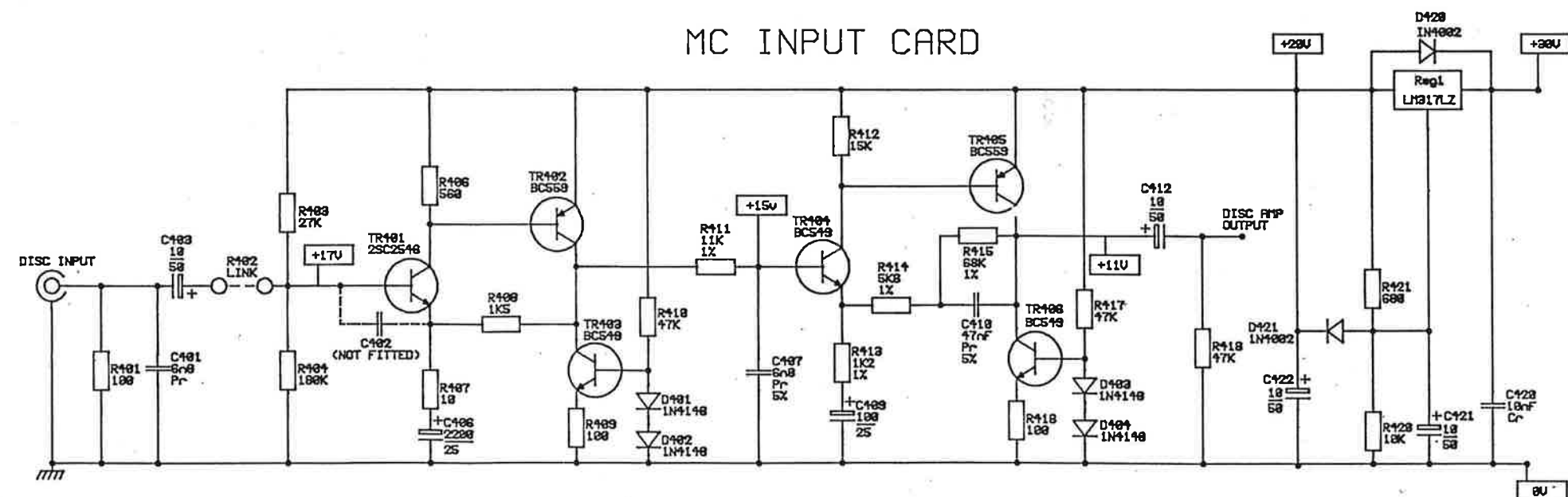
PCB NO.	ISSUE
P1066	5



MM INPUT CARD



MC INPUT CARD



NOTE. ONLY LEFT CHANNEL SHOWN. RIGHT CHANNEL HAS AN (A) SUFFIX ON CIRCUIT REFERENCE NUMBERS.
ALL RESISTORS ARE 0.25W METAL FILM 5% UNLESS OTHERWISE.

ISSUE CODE-PROVISIONAL ABC ETC/PRODUCTION 123 ETC

ISSUE 5	27/7/90	FIRST CAD ISSUE
ISSUE 1	2/8/90	FIRST CAD RELEASE

GENERAL INFORMATION
DO NOT SCALE/DIMENSIONS IN MM
TOLERANCES +/- ANGLES +/-
GENERAL DRAFT
UNSPECIFIED RADII
GEOMETRIC TOLERANCES TO BS 308
REMOVE ALL BURR AND SHARP EDGES

MATERIAL

FINISH

DRAWN

DATE

CHECKED

SCALE

TITLE

STANDARD DISC INPUT CARDS CIRCUIT DIAGRAM

PRECISION AUDIO EQUIPMENT

12 MOCHORE INDUSTRIAL ESTATE - NEWTOWN - POLYS SY18 4LE - U.K.
TEL. (0686) 625268 FAX (0686) 625241

ION
SYSTEMS

DRAWING NO.

3010 0890

SHEET	ISSUE
1 OF 1	1