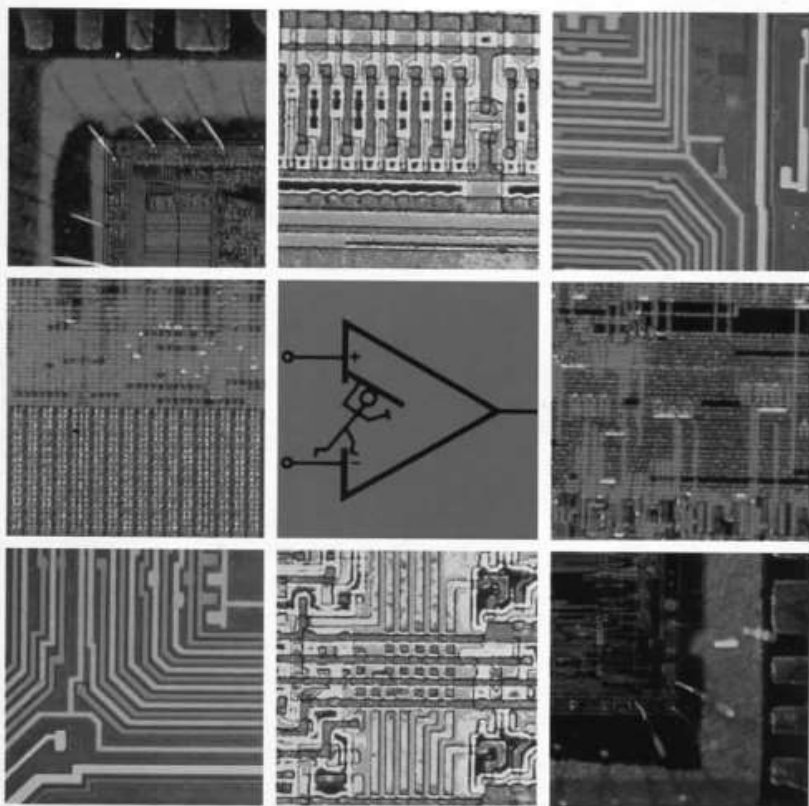


THOMAS M. FREDERIKSEN

INTUITIVE IC OP AMPS

FROM BASICS TO USEFUL
APPLICATIONS



National's Semiconductor Technology Series



Thomas M. Frederiksen

About the Author

Thomas M. Frederiksen is a linear IC design engineer with National Semiconductor Corporation, Santa Clara, California. Upon earning his BSEE degree from California State Polytechnic University at San Luis Obispo, he started his professional career as a development engineer with the Motorola Systems Development Laboratory. Subsequently he worked with the Microelectronics Group at Hughes Semiconductor Division and later became senior project engineer at Motorola Semiconductor Products Division.

In 1971 Mr. Frederiksen joined his present firm where he developed custom ICs and standard single-supply building block circuits for automotive and industrial applications. Today he acts as technical consultant to National's Linear Design group and enjoys traveling throughout the world as a leading participant in the company's CMOS and Linear seminars.

Mr. Frederiksen holds more than 40 patents on linear ICs and devices, and is a frequent contributor to professional literature. In 1977 he received the International Solid State Circuits Conference Best Paper Award. He also designed the Quad Amps LM3900, LM324, and LM339. The LM324 is today's most popular Op Amp.

His first book, *Intuitive IC Electronics* (McGraw-Hill, 1982), has been followed by *Intuitive IC Op Amps* and *Intuitive IC CMOS Evolution*. All are part of National's Semiconductor Technology Series. Mr. Frederiksen is currently working on a four-book series on the basics of linear and digital electronics which he expects to complete in late 1984.