

Repeated from last month, this photo shows one of the assembled power amplifier modules. Note that the module has been amended slightly since the photo was taken, with the addition of two extra resistors ($2.2k\Omega$ and 10Ω) and finned heatsinks to Q11 and Q13.

closely at the photograph of the amplifier chassis to see how the various wires and connections have been routed. These are not arbitrary; the layout has been produced after much trial and error to obtain the best distortion, separation between channels and

signal-to-noise ratio, so be sure to follow the diagram exactly.

There are a number of features of the wiring which require particular comment. First, the input wiring from the RCA sockets to the volume control must not be earthed to the chas-

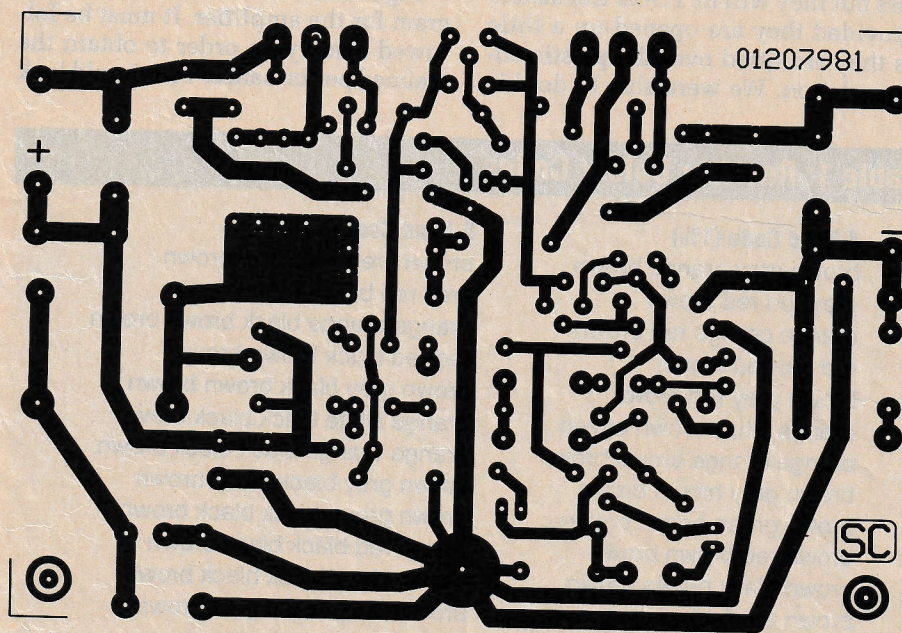


Fig.9: this is the full-size etching pattern for the amplifier PC board.

