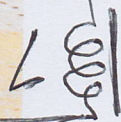


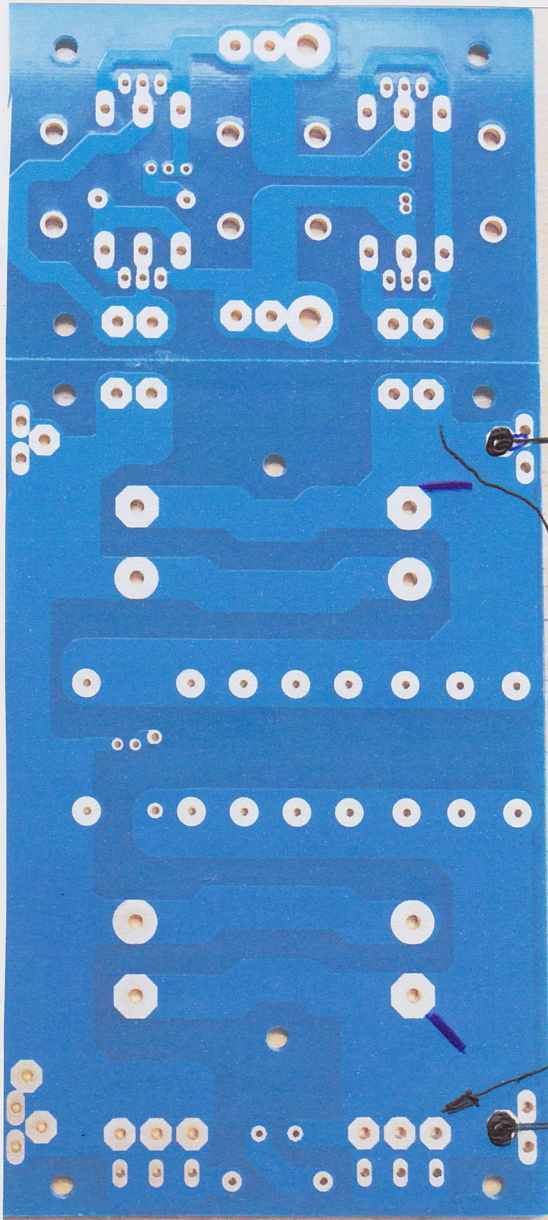
① - HIGH RIPPLE, AND
- HIGH HF NOISE

② FIRST C:
- REDUCED RIPPLE
- SOMEWHAT REDUCED
HF NOISE

③ CHOK L:
- GOOD REDUCTION
OF RIPPLE
- VERY GOOD REDUCTION
OF HF NOISE

④ SECOND C:
- FINAL REDUCTION
OF RIPPLE (AND
HF NOISE...)





* THE CURRENT WILL
RUN DOWN THE
PATH OF LEAST
RESISTANCE
($4A \pm 1A$!!)

* THE CAPACI-
TORS ARE
NOT GIVEN
A CHANCE
TO FILTER
THE RIPPLE/
NOISE

* THE CURRENT
FLOW IS NOT
BEING
CONTROLLED
AT ALL