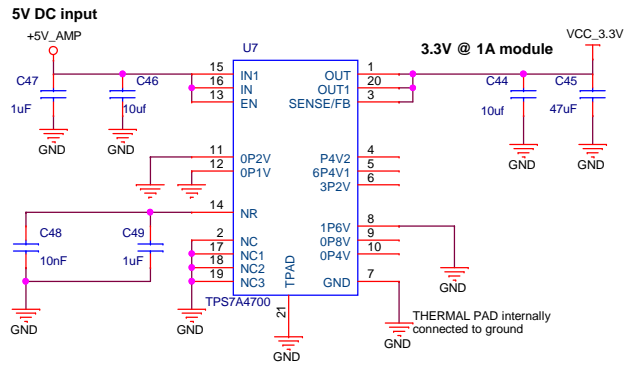
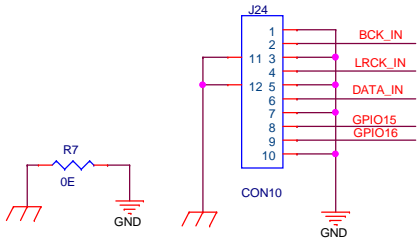


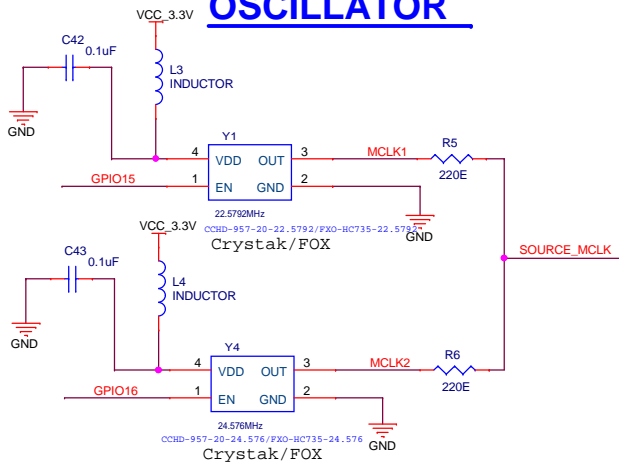
ULTRA LOW NOISE LDO



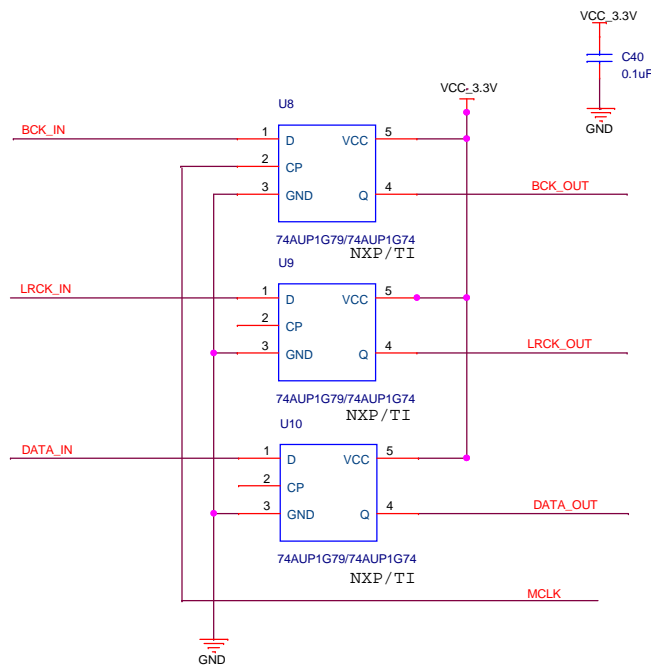
INPUT CONNECTOR



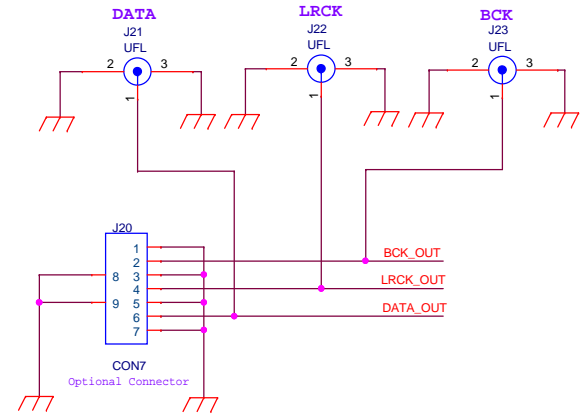
OSCILLATOR



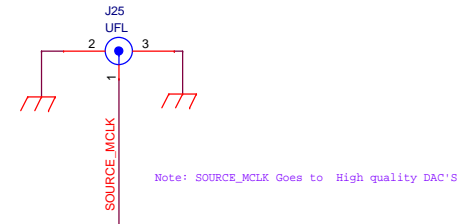
SINGLE FLIPFLOP



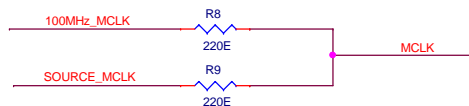
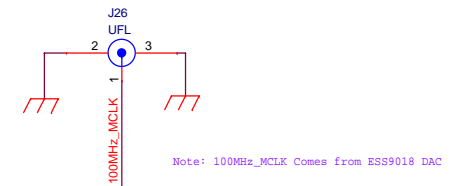
I2S OUTPUT



SOURCE MCLK



DESTINATION MCLK



Note: 100MHz_MCLK only for ESS DAC.

Note:
Asynchronous Mode : Don't connect SOURCE_MCLK or 100MHz_MCLK to DAC
Synchronous Mode : Connect SOURCE_MCLK or 100MHz_MCLK to DAC