

The most basic and often most accurate version of the PPS requires only a current output Digital to Analog Converter (DAC), a power op amp and a feedback resistor as illustrated in Figure 1. According to op amp theory, the voltage at the inverting input (summing junction) will be zero and op amp input current will be zero. As a result, all current from the DAC flows through the feedback resistor  $R_F$ . Ohm's law then causes the circuit to provide a precise output voltage as function of DAC output current. Given a perfect DAC and feedback resistor, only two op amp parameters contribute significantly to the output voltage errors. These are voltage offset ( $V_{OS}$ ), modeled by the battery, and bias current ( $I_B$ ), represented by the current source. Due to the high output impedance of the current output DAC in relation to  $R_F$ ,  $V_{OS}$  errors appear at the output without gain.

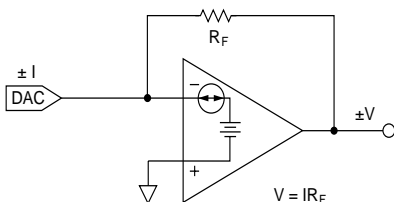


FIGURE 1. CURRENT TO VOLT CONVERSION

For a 10V output and op amp offset of 5mV, this error contributes only 0.05%. For a 100V output, a 0.5mV offset contributes an error of only 5ppm. Clearly, the DAC can easily be the major error source.

Op amp bias currents add to the DAC output current. The majority of available DAC's have full scale currents of  $\pm 1\text{mA}$  or  $0/2\text{mA}$ . Most of today's bipolar input power op amps feature bias currents of less than 50nA. This results in errors of only 25 ppm maximum of the full scale range (FSR). FET input bias currents at 25°C are seldom over 100 pA and are specified as low as 10pA. These errors translate to 0.05ppm and 0.005 ppm. Since FET bias currents are generally characterized as doubling every 10°C, the bias current of the two examples could become 100nA and 10nA at 125°C, producing errors of 50ppm and 5.4ppm, respectively. Again, the DAC is the critical error source.

To determine the significance of the error contribution of a specific power op amp to the performance of various systems, refer to Table 1, next page. The least significant bit (LSB) is the value of the smallest step change of output. Comparing the calculated errors to the LSB values reveals system compatibility. For current output, DACs op amp bias currents compare directly with the DAC current LSB and  $V_{OS}$  errors compare directly with the full scale output voltage. Thus, the importance of low bias currents is dependent solely on system resolution. However, the significance of voltage offset specifications varies with both resolution and full scale voltage range.

## CURRENT OUTPUT VERSIONS

A current output PPS using a current output DAC can be implemented as shown in Figure 5. Another version of the current output PPS is shown in Figure 6. This allows the load to be grounded, but is more complex and has additional errors. Especially if the output currents are relatively low, the current through the lower  $R_F/R_{IN}$  pair may become significant because it is also sensed by  $R_S$ . Major errors can be caused by ratio mismatching between the  $R_F/R_{IN}$  pairs. The resulting voltage errors across the sense resistor equal the output voltage times the ratio mismatch. For example, consider a  $0.2\Omega$  sense resistor, a 5A output requiring a 20V drive and a ratio mismatch of only 0.1% causes an error of 2%. Even an 8-bit LSB is only 0.39%!

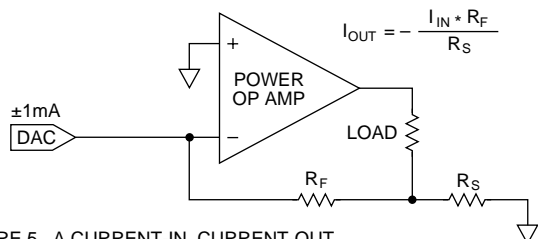


FIGURE 5. A CURRENT-IN, CURRENT-OUT PROGRAMMABLE POWER SUPPLY

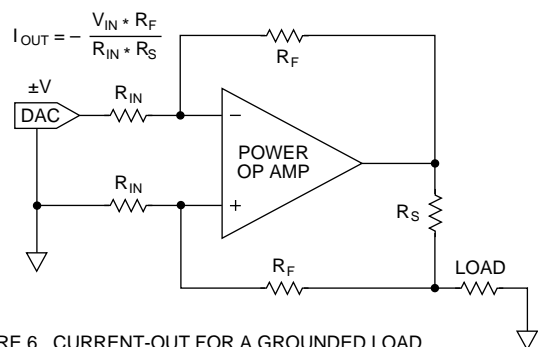


FIGURE 6. CURRENT-OUT FOR A GROUNDLED LOAD

In all of the current output circuits discussed, errors due to voltage offset appear across the sense resistor at a gain of one or more. This means higher sense resistor values will minimize output current errors at the expense of increased power dissipation in  $R_S$ , the power op amp and system power supplies. One other word of caution, if the load contains inductive elements, refer to Applications Note 5 which discusses maintaining stability in precision current output circuits having reactive loads such as deflection coils. A current output PPS using a voltage output DAC is shown in Figure 7. The power op amp drives current through the load until voltage on the sense resistor ( $R_S$ ) equals the input voltage. To achieve high efficiency (low voltage across  $R_S$  compared to the load voltage), this circuit requires a low voltage DAC or a high voltage op amp. If neither is possible, the circuit of Figure 8 allows the sense resistor voltage drop to be lower than the input voltage.

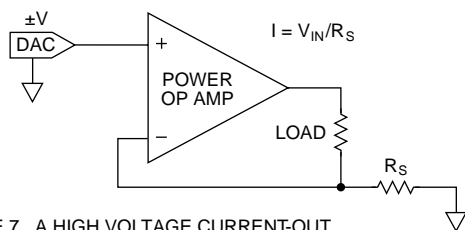


FIGURE 7. A HIGH VOLTAGE CURRENT-OUT PROGRAMMABLE SUPPLY

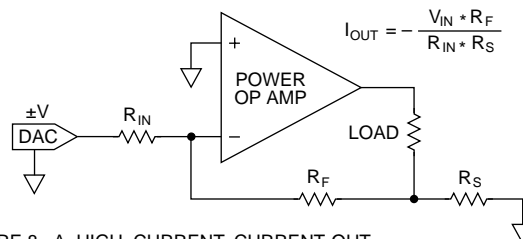


FIGURE 8. A HIGH CURRENT, CURRENT-OUT PROGRAMMABLE POWER SUPPLY

## PROGRAMMABLE ACTIVE LOADS

To obtain the V-I characteristics of a power source, it may be desirable to control the output voltage and measure the output current or visa versa. The current output circuits shown are suitable as active current loads. The circuit of Figure 9 performs voltage loading of a solar cell panel. The power op amp forces the DAC voltage to appear across the panel and also performs an I to V conversion providing the data to plot V-I characteristics.

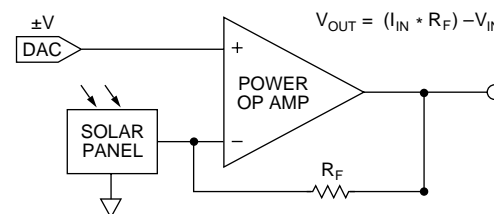


FIGURE 9. SOLAR PANEL TESTER

Due to its flexibility, accuracy and ease of use, the power op amp is the leading choice when programmable power supplies are called for. They greatly simplify circuits requiring unipolar outputs and are very cost effective when designing bipolar power supplies. The only remaining question is whether to buy the power op amp or to make one in discrete form. For low quantity production runs, the required design effort renders the "make" option too expensive. For high volume runs, the question is more involved. In many applications, the smaller size and lower weight plus high reliability, make the "buy" decision the only reasonable choice. (See "The Advantages of IC power op amps.") In all applications, the hybrid power op amp enhances design quality, speeds assembly and reduces overhead costs.

FULL SCALE RANGE					
BITS	PPM	2mA	20V	50V	200V
8	3906	7.8μA	78mV	195mV	.78V
10	977	1.95μA	19.5mV	48.8mV	195mV
12	244	488nA	4.88mV	12.2mV	48.8mV
14	61	122nA	1.22mV	3.05mV	12.2mV
16	15.3	30.5nA	305μV	.763mV	3.05mV

TABLE 1. LSB VALUES FOR VARIOUS OUTPUT LEVELS