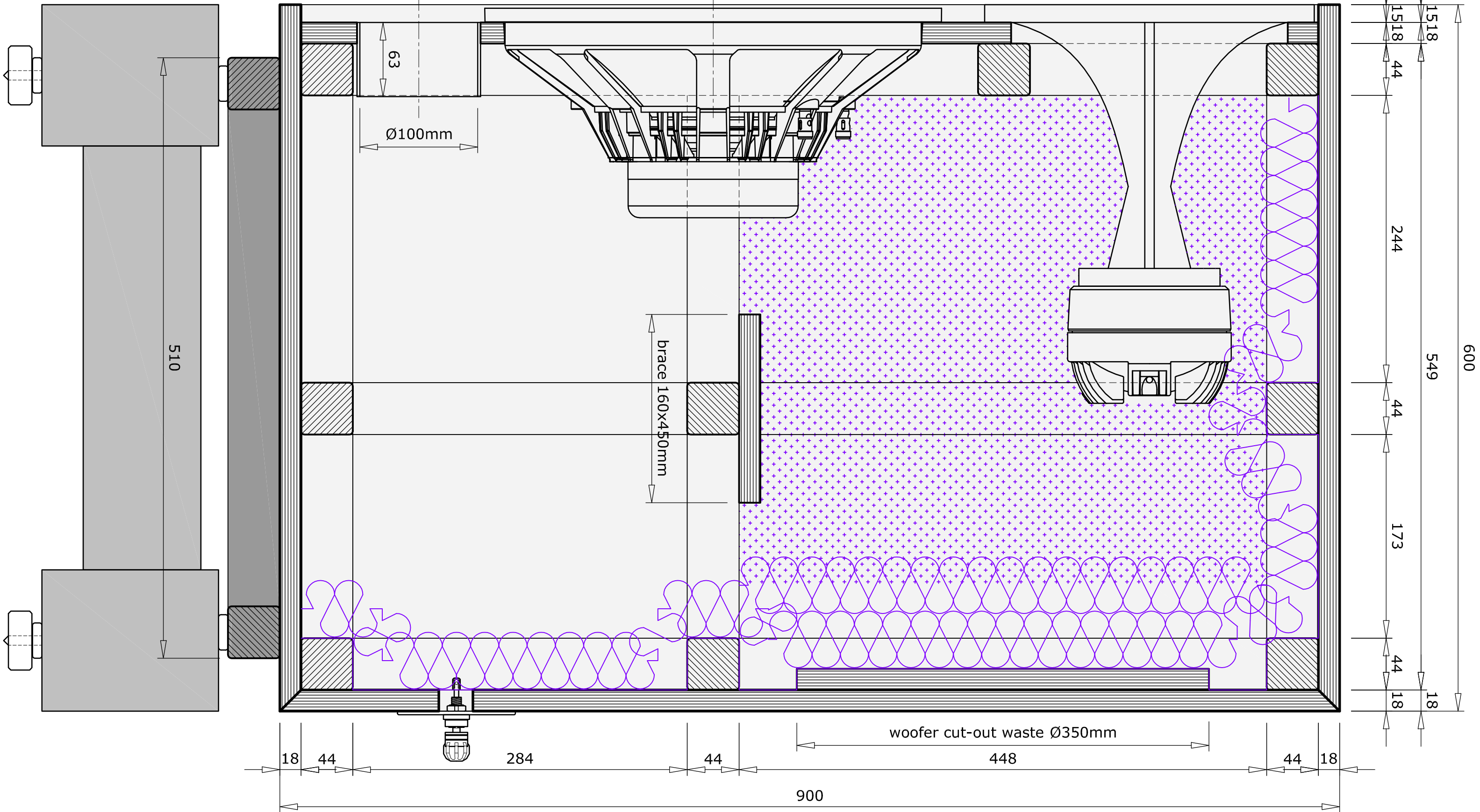
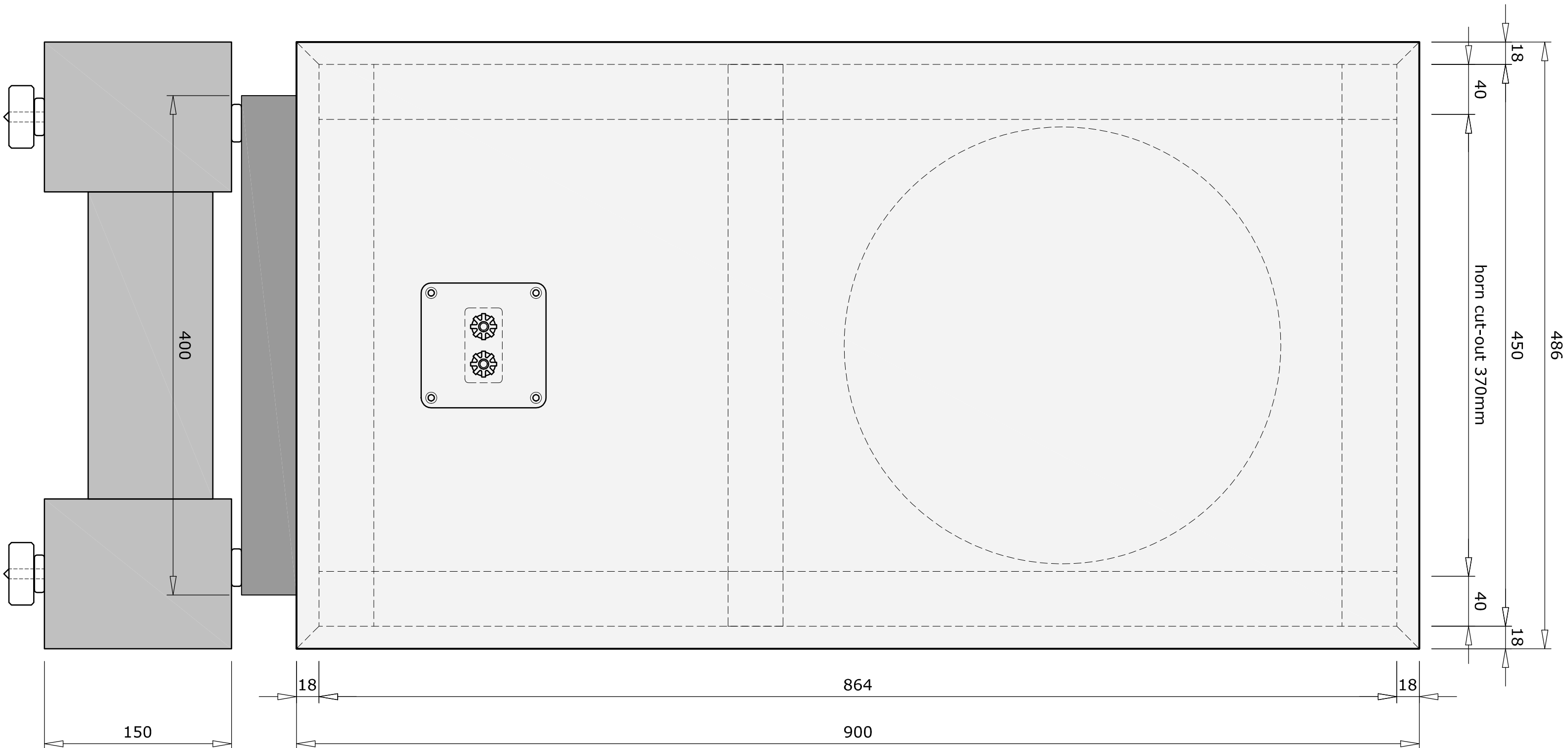


front view



vertical section



rear view

tweeter: Fatial Pro HF201 compression driver + P-Audio PH-2380 Constant Directivity horn / midwoofer: Fatial Pro 15PR400 cabinet material: 18mm - 13 ply Baltic Birch Marine Grade plywood with 44x44mm pine internal frame / netto volume: 200 litres range: 35Hz - 20.000Hz (-3dB) / efficiency: 92dB / 2.83V nominal impedance: 8 ohms

* all contacting surfaces should be fully glued
* inside walls lined with Standardplast STP Bomb Aero (or similar), 4mm thick
* damping-material 50mm thick multiple density polyester fibre

opdrachtgever
humblehomemadhi@gmail.com

datum
25-12-2017

bestandsnaam

gewijzigd 1

gewijzigd 2

Calpamos

Humble Homemade Hifi

schaal
1:3

formaat
A1

blad
01