
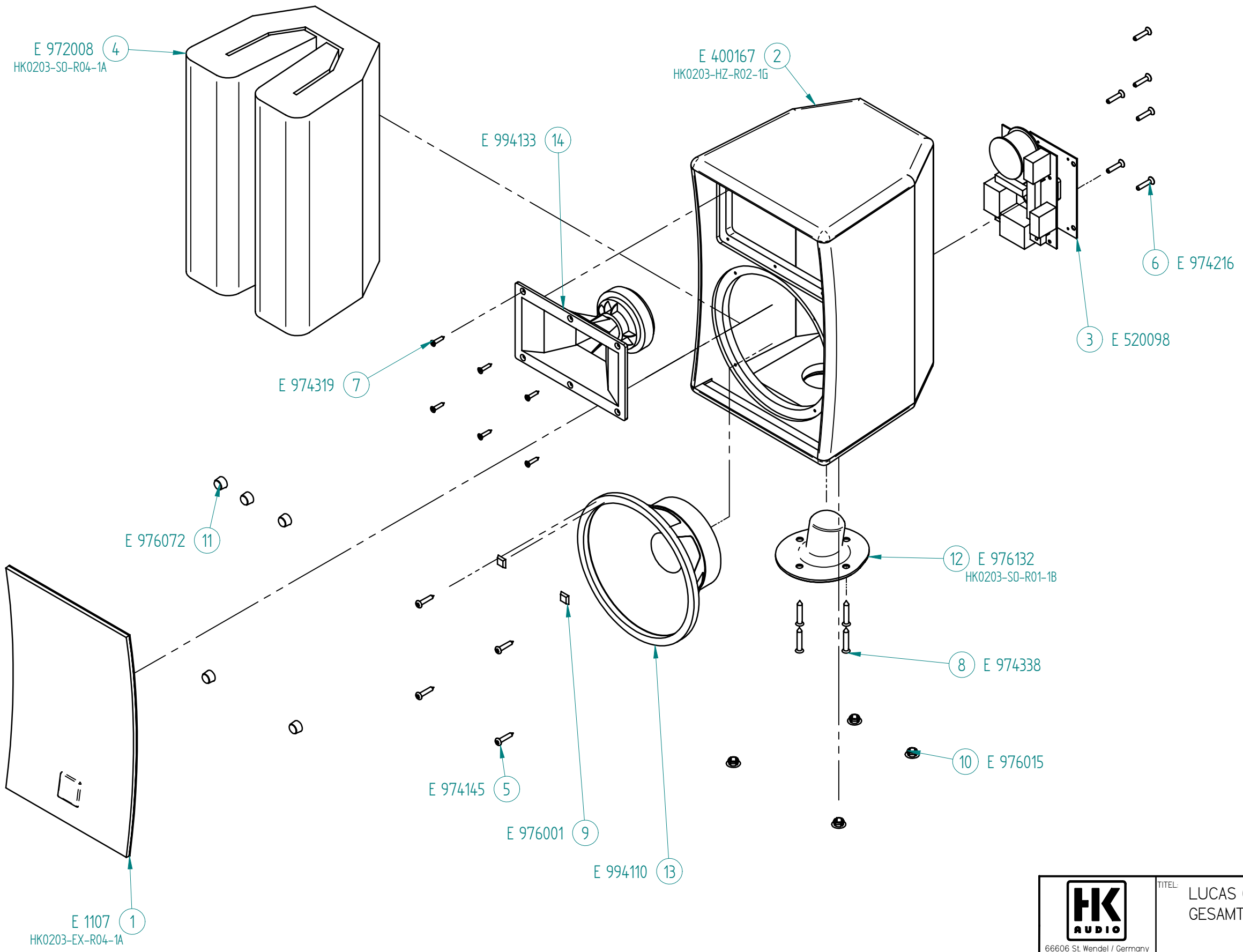




| | | | |
|---|---------------------------------|-------------|----------|
|  | TITEL: LUCAS 600 BASS GESAMT | | |
| | 66606 St. Wendel / Germany | | |
| ZEICHNUNGS-NR: | HK0203-EX-R03-IA | VERSION: | I A |
| ERSTELLT VON: | C. LORIS | AM: | 19.03.04 |
| GEPRÜFT/ FREIGEgeben VON: | KLAUS BIRSTER | AM: | 23.03.04 |
| WERKSTOFF: | | BLATT: 1/2 | |
| WERKSTOFF: | | OBERFLÄCHE: | |
| DATEI NAME: HK0203-EX-R03-IA-BASS-GESAMT | | | |




| INDEX | ÄNDERUNG | ZEICHNER |
|-------|----------|----------|
| | | |
| | | |
| | | |
| | | |


| | | | |
|---|--|--------------------------------|-------------|
|  | | TITEL: LUCAS 600 TOP GESAMT | |
| 66606 St. Wendel / Germany | | | |
| ZEICHNUNGS-NR. HK0203-EX-R05-1A | | VERSION: I | REVISION: A |
| ERSTELLT VON: C. LORIS | | AM: 22.03.04 | BLATT: 1/2 |
| GEPRÜFT/ FREIGEgeben VON: KLAUS BIRSTER | | AM: 23.03.04 | BLÄTTER |
| WERKSTOFF: | | OBERFLÄCHE: | |
| DATEINAME: HK0203-EX-R05-1A-BASS-GESAMT | | | |


L.U.C.A.S 600 Sub

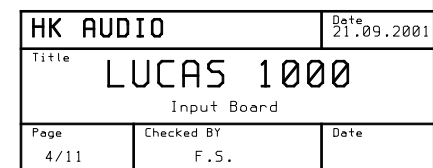
|  | Part No. | Description | Quantity |
|---|----------|-------------------------------------|----------|
| | E400166 | Speaker housing Lucas 600 Subwoofer | 1 |
| | E976097 | Insert handle | 2 |
| | E976009 | Rubber foot 38 mm | 4 |
| | E1108 | Frontgrille Lucas 600 Subwoofer | 1 |
| | E970611 | Protective frame for speaker | 1 |
| | E994162 | 12" Speaker B&C 12 pz 32 8 ohms | 1 |
| | E502142 | Elektronic Chassis Lucas 600, 230 V | 1 |

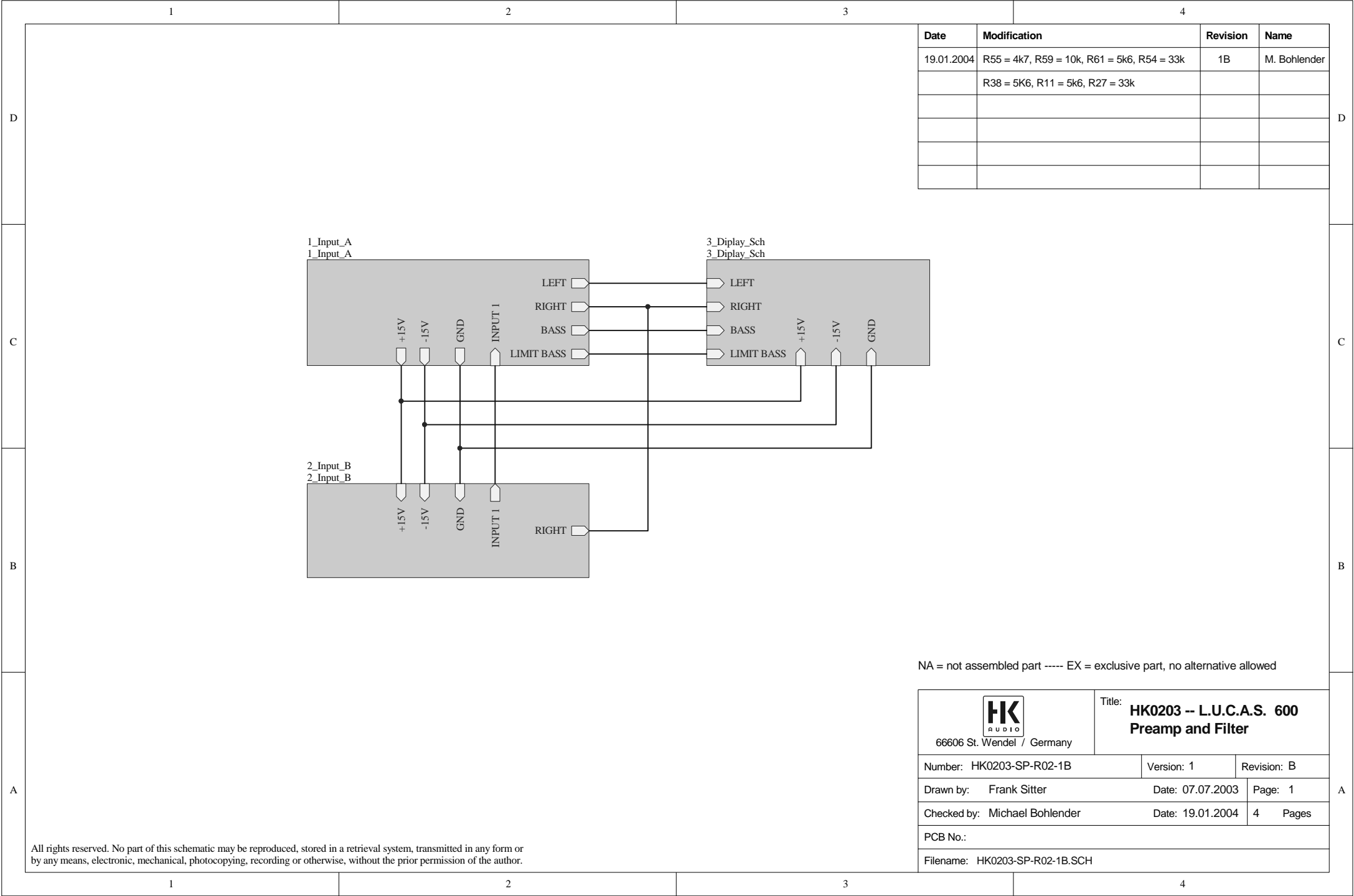
|  | Art. No. | Artikel | Stückzahl |
|---|----------|-------------------------------------|-----------|
| | E400166 | Leergehäuse Lucas 600 Subwoofer | 1 |
| | E976097 | Kunststoff Schalengriff | 2 |
| | E976009 | Gummifuß 38 mm | 4 |
| | E1108 | Frontgitter Lucas 600 Subwoofer | 1 |
| | E970611 | Schutzbügel für Lautsprecher | 1 |
| | E994162 | 12" Speaker B&C 12 pz 32 8 ohms | 1 |
| | E502142 | Elektronic Chassis Lucas 600, 230 V | 1 |

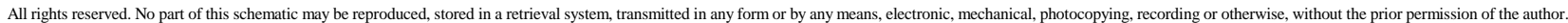
L.U.C.A.S 600 Satellite

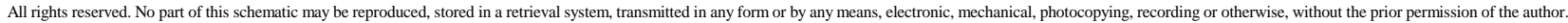
|  | Part No. | Description | Quantity |
|---|----------|-------------------------------------|----------|
| | E400167 | Speaker housing Lucas 600 Satellite | 1 |
| | E1107 | Frontgrille Lucas 600 Satellite | 1 |
| | E976132 | HK AUDIO MonoTilt | 1 |
| | E520098 | Crossover Lucas 600 Satellite | 1 |
| | E994110 | 8" Speaker EM 8326, 4 ohms | 1 |
| | E994133 | Horn with driver EAPT 150 | 1 |
| | E994146 | Diphragm for EAPT 150 | 1 |

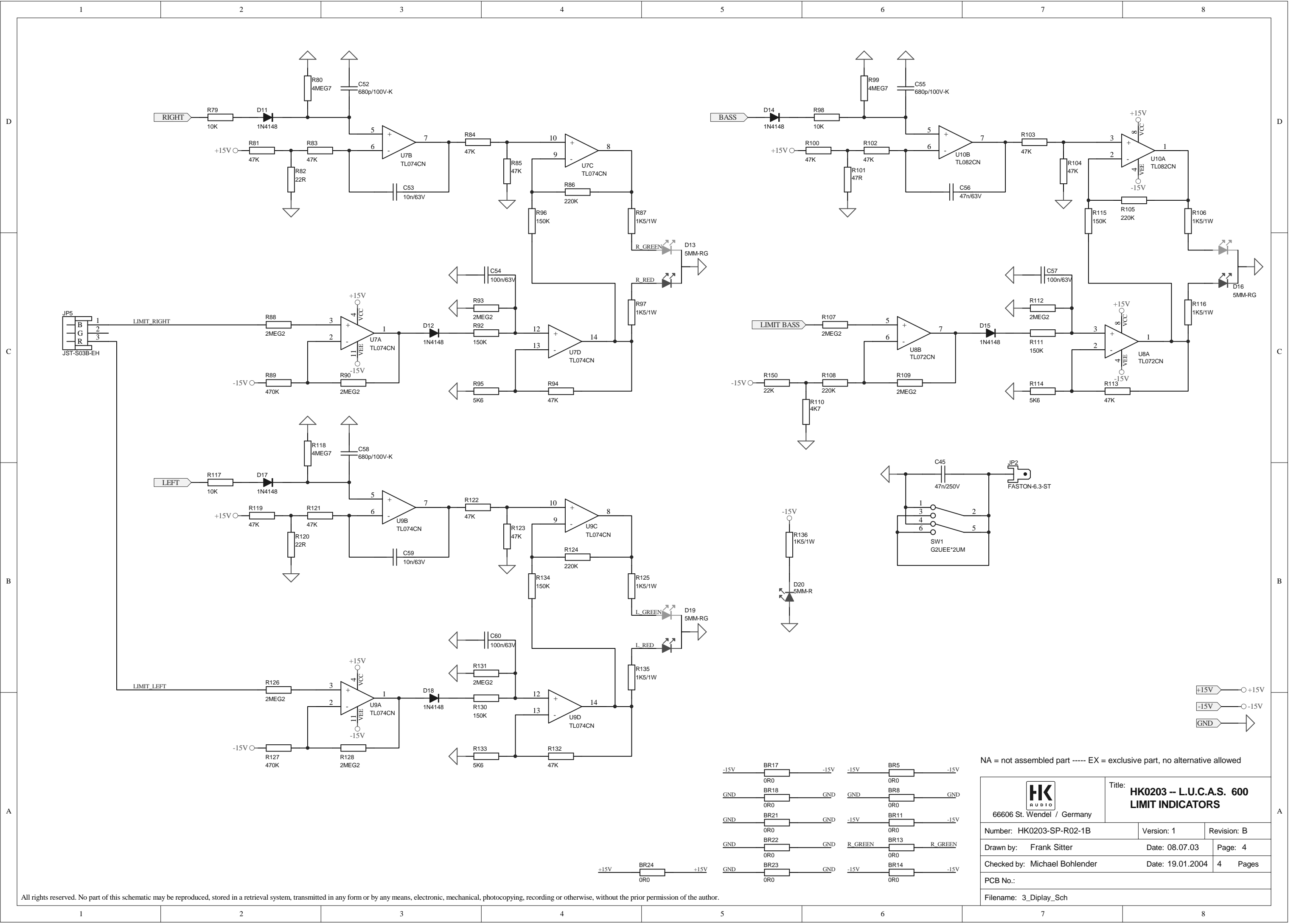
|  | Art. No. | Artikel | Stückzahl |
|---|----------|------------------------------------|-----------|
| | E400167 | Leergehäuse Lucas 600 Satellite | 1 |
| | E1107 | Frontgitter Lucas 600 Satellite | 1 |
| | E976132 | HK AUDIO MonoTilt | 1 |
| | E520098 | Frequenzweiche Lucas 600 Satellite | 1 |
| | E994110 | 8" Speaker EM 8326, 4 ohms | 1 |
| | E994133 | Horn mit Treiber EAPT 150 | 1 |
| | E994146 | Schwingspule EAPT 150 | 1 |



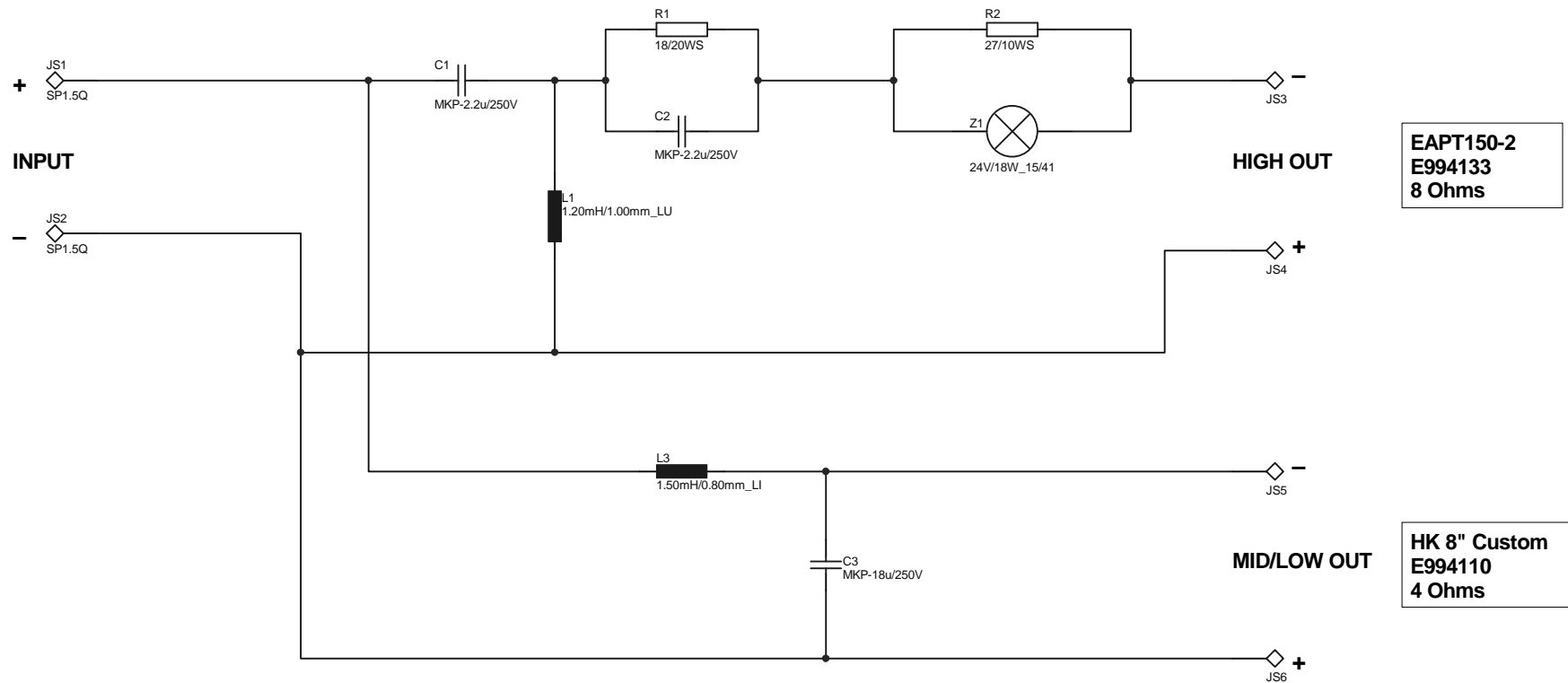









All rights reserved. No part of this schematic may be reproduced, stored in a retrieval system, transmitted in any form or by any means, electronic, mechanical, photocopying, recording or otherwise, without the prior permission of the author.



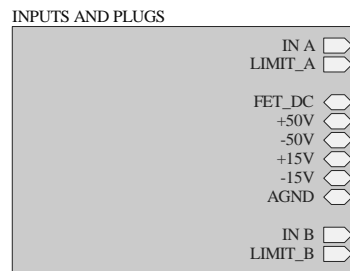
EAPT150-2
E994133
8 Ohms


HK 8" Custom
E994110
4 Ohms

NA = not assembled part ----- EX = exclusive part, no alternative allowed

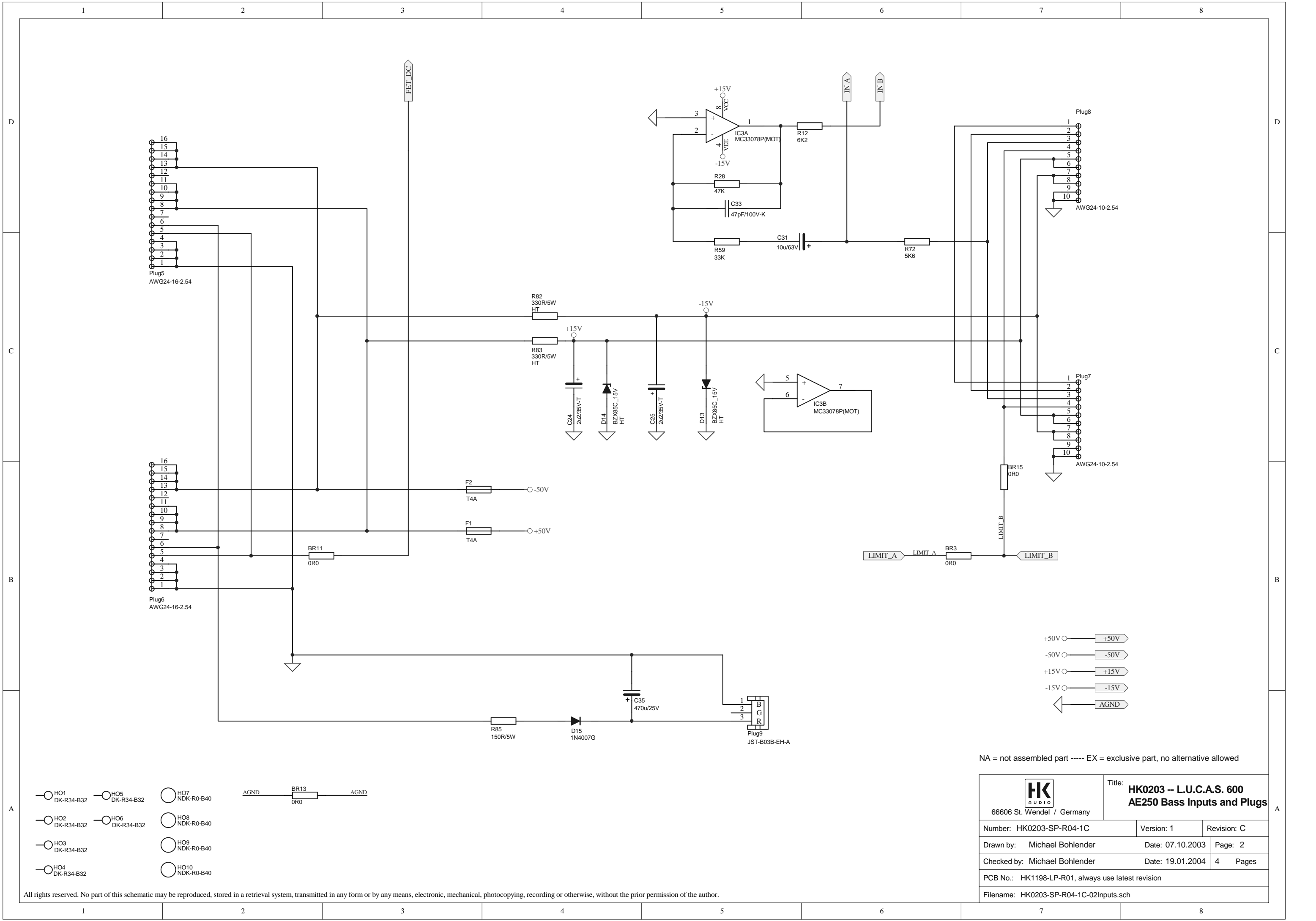
| | | | |
|---|--|--|-------------|
|  66606 St. Wendel / Germany | | Title: HK0203 - L.U.C.A.S. XT12 TOP Crossover Circuit | |
| Number: HK0203-SP-R03-1A | | Version: 1 | Revision: A |
| Drawn by: Michael Bohlender | | Date: 23.07.2003 | Page: 1 |
| Checked by: Frank Sitter | | Date: 23.07.2003 | 1 Pages |
| PCB No.: HK0203-LP-R03-1A.pcb | | | |
| Filename: HK0203-SP-R03-1A.sch | | | |

All rights reserved. No part of this schematic may be reproduced, stored in a retrieval system, transmitted in any form or by any means, electronic, mechanical, photocopying, recording or otherwise, without the prior permission of the author.



| | | | |
|---|--|------------|-------------|
|  66606 St. Wendel / Germany | Title: HK0203 -- L.U.C.A.S. 600 AE250 Bass Power Amp Unit | | |
| | Number: HK0203-SP-R04-1C | Version: 1 | Revision: C |
| Drawn by: Michael Bohlender | Date: 07.10.2003 | Page: 1 | |
| Checked by: Michael Bohlender | Date: 19.01.2004 | 4 | Pages |
| PCB No.: HK1198-LP-R01, always use latest revision | | | |
| Filename: HK0203-SP-R04-1C-01Main.Sch | | | |

All rights reserved. No part of this schematic may be reproduced, stored in a retrieval system, transmitted in any form or by any means, electronic, mechanical, photocopying, recording or otherwise, without the prior permission of the author.

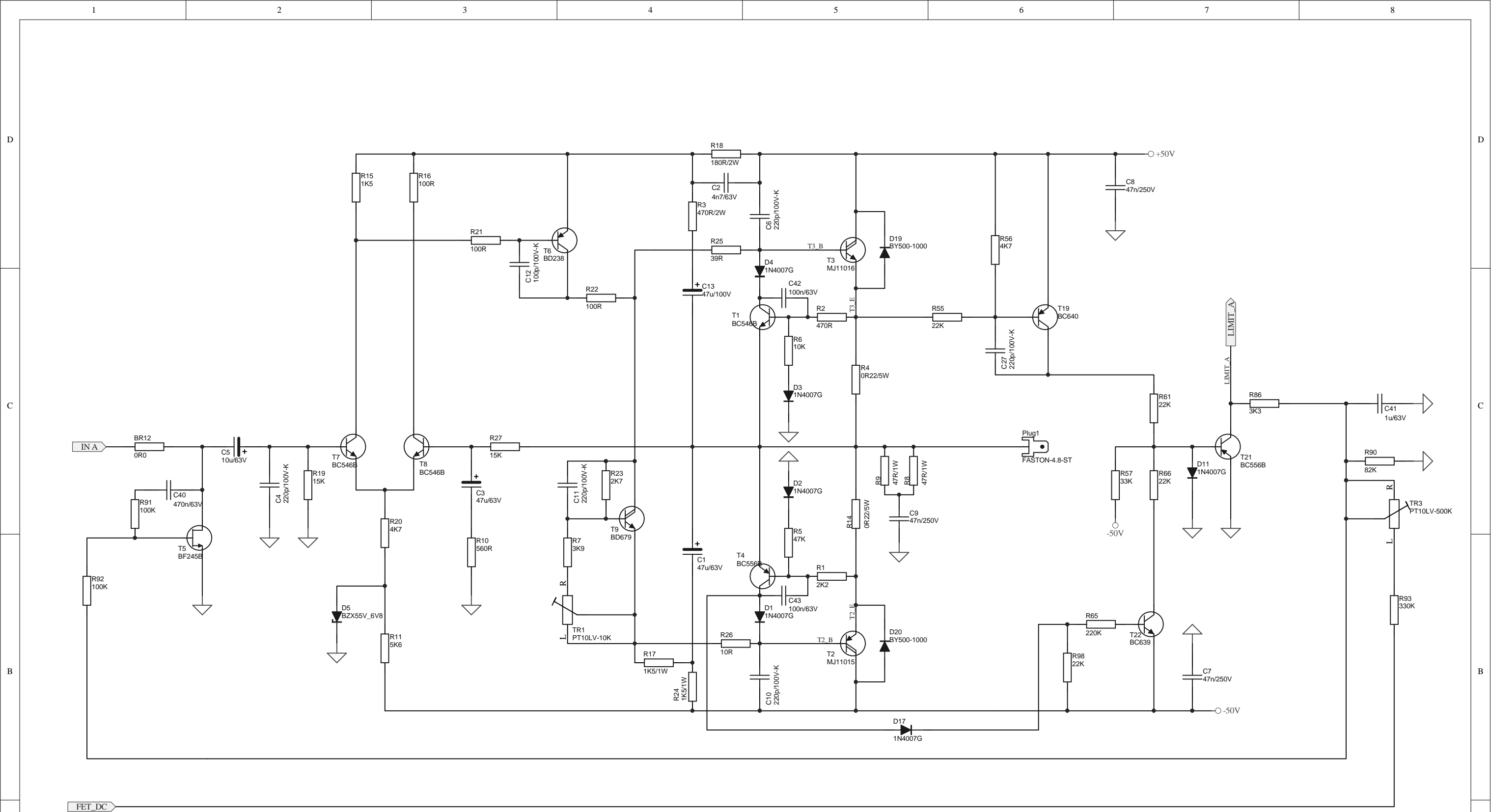


- HO1 DK-R34-B32
- HO2 DK-R34-B32
- HO3 DK-R34-B32
- HO4 DK-R34-B32
- HO5 DK-R34-B32
- HO6 DK-R34-B32
- HO7 NDK-R0-B40
- HO8 NDK-R0-B40
- HO9 NDK-R0-B40
- HO10 NDK-R0-B40

All rights reserved. No part of this schematic may be reproduced, stored in a retrieval system, transmitted in any form or by any means, electronic, mechanical, photocopying, recording or otherwise, without the prior permission of the author.

NA = not assembled part ----- EX = exclusive part, no alternative allowed

| | | | |
|---|--|--|-------------|
| <div><div>HK</div><div>AUDIO</div><div>66606 St. Wendel / Germany</div></div> | | Title: HK0203 -- L.U.C.A.S. 600 AE250 Bass Inputs and Plugs | |
| Number: HK0203-SP-R04-1C | | Version: 1 | Revision: C |
| Drawn by: Michael Bohlender | | Date: 07.10.2003 | Page: 2 |
| Checked by: Michael Bohlender | | Date: 19.01.2004 | 4 Pages |
| PCB No.: HK1198-LP-R01, always use latest revision | | | |
| Filename: HK0203-SP-R04-1C-02Inputs.sch | | | |



FET_DC

A

B

C

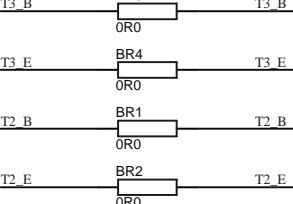
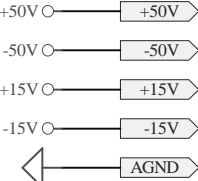
D

A

B

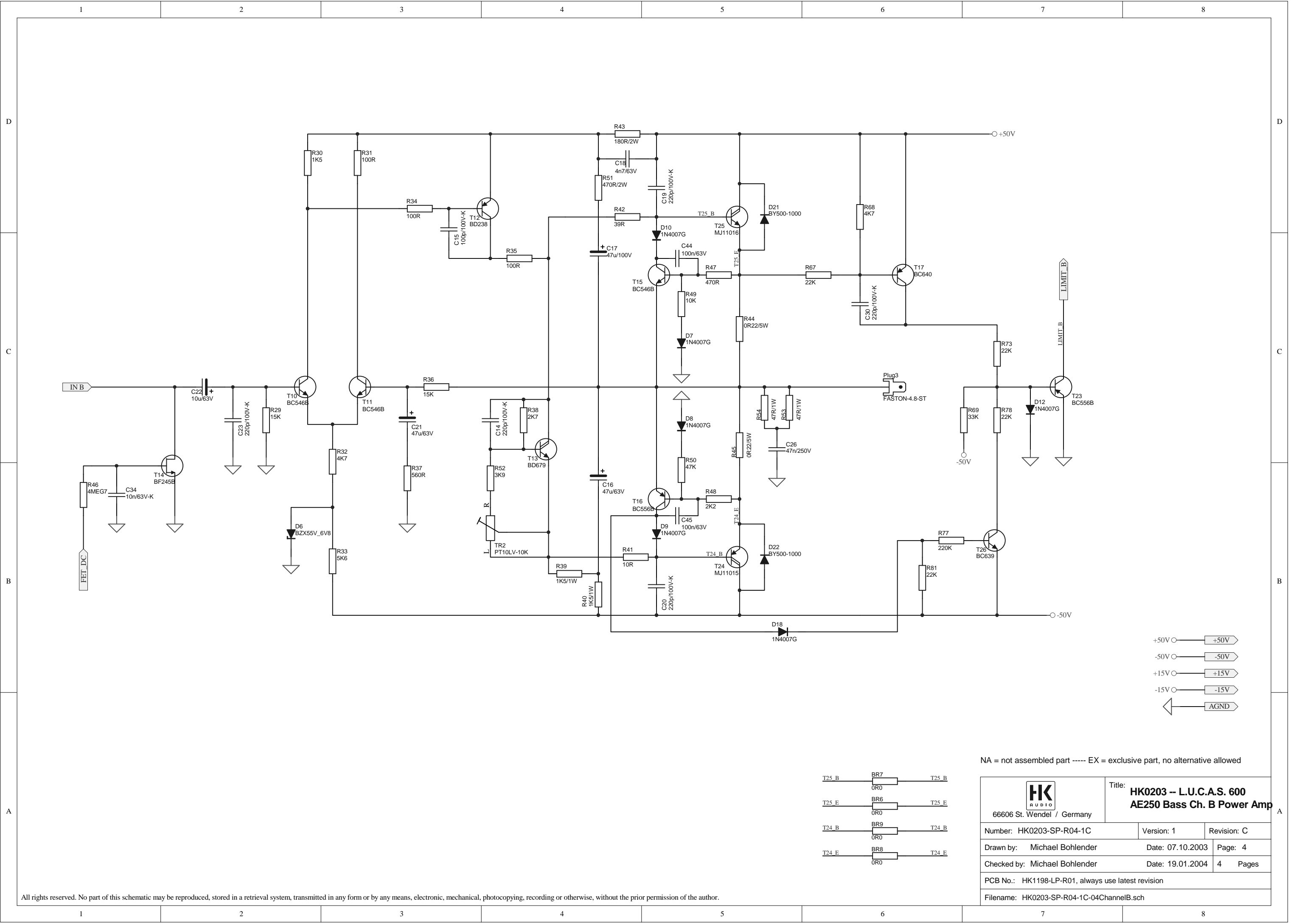
C

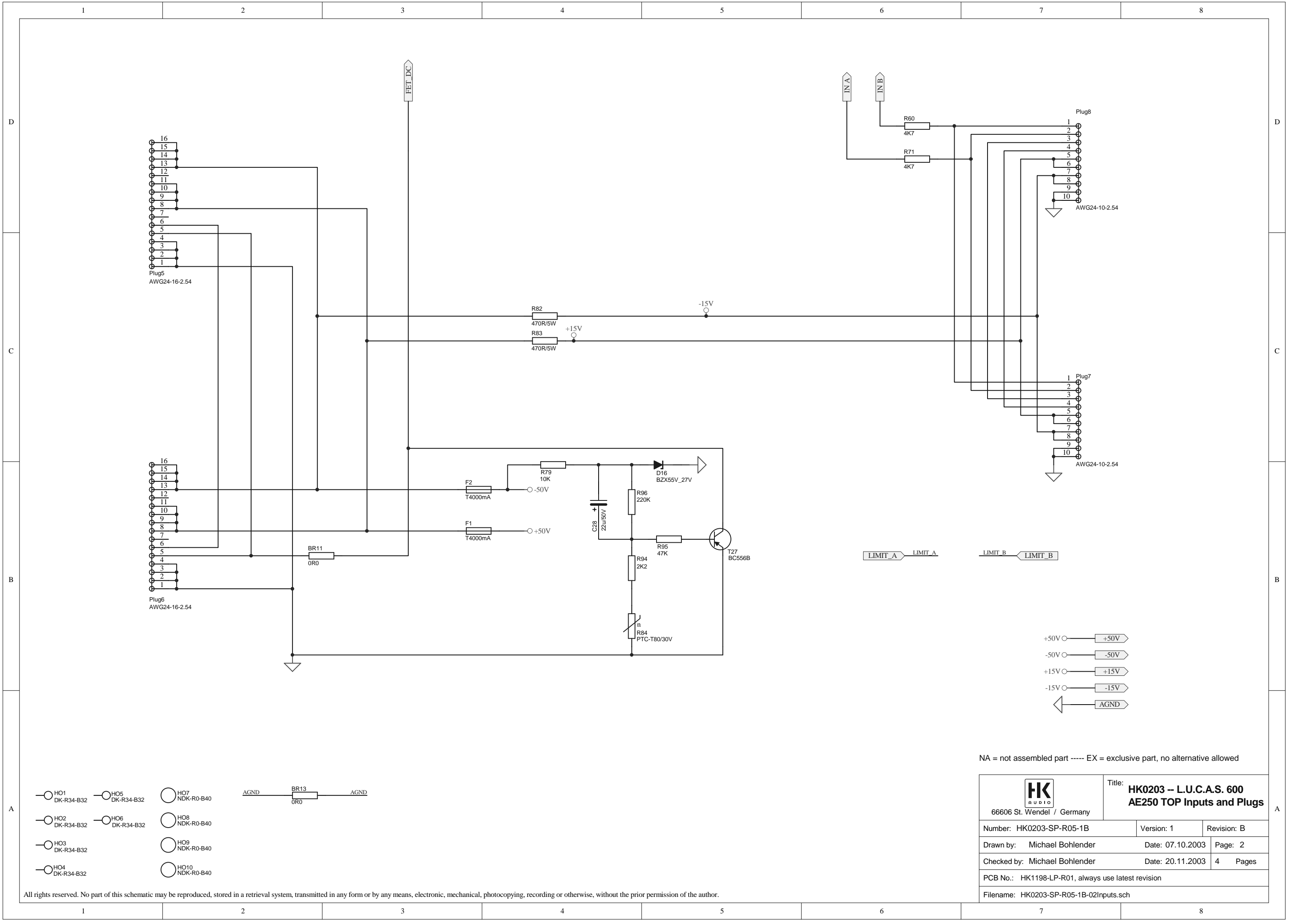
D



NA = not assembled part ----- EX = exclusive part, no alternative allowed

| | | | |
|---|--|---|-------------|
|  66606 St. Wendel / Germany | | Title: HK0203 -- L.U.C.A.S. 600 AE250 Bass Ch. A Power Amp | |
| Number: HK0203-SP-R04-1C | | Version: 1 | Revision: C |
| Drawn by: Michael Bohlender | | Date: 07.10.2003 | Page: 3 |
| Checked by: Michael Bohlender | | Date: 19.01.2004 | 4 Pages |
| PCB No.: HK1198-LP-R01, always use latest revision | | | |
| Filename: HK0203-SP-R04-1C-03ChannelA.sch | | | |

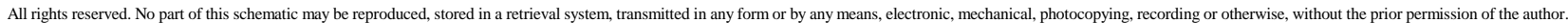


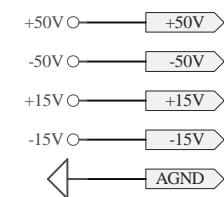


- HO1 DK-R34-B32
 - HO2 DK-R34-B32
 - HO3 DK-R34-B32
 - HO4 DK-R34-B32
 - HO5 DK-R34-B32
 - HO6 DK-R34-B32
 - HO7 NDK-R0-B40
 - HO8 NDK-R0-B40
 - HO9 NDK-R0-B40
 - HO10 NDK-R0-B40
- AGND BR13 0R0 AGND

NA = not assembled part ----- EX = exclusive part, no alternative allowed

| | | | |
|---|--|---|-------------|
| <div><div>HK</div><div>AUDIO</div><div>66606 St. Wendel / Germany</div></div> | | Title: HK0203 -- L.U.C.A.S. 600 AE250 TOP Inputs and Plugs | |
| Number: HK0203-SP-R05-1B | | Version: 1 | Revision: B |
| Drawn by: Michael Bohlender | | Date: 07.10.2003 | Page: 2 |
| Checked by: Michael Bohlender | | Date: 20.11.2003 | 4 Pages |
| PCB No.: HK1198-LP-R01, always use latest revision | | | |
| Filename: HK0203-SP-R05-1B-02Inputs.sch | | | |





All rights reserved. No part of this schematic may be reproduced, stored in a retrieval system, transmitted in any form or by any means, electronic, mechanical, photocopying, recording or otherwise, without the prior permission of the author.

