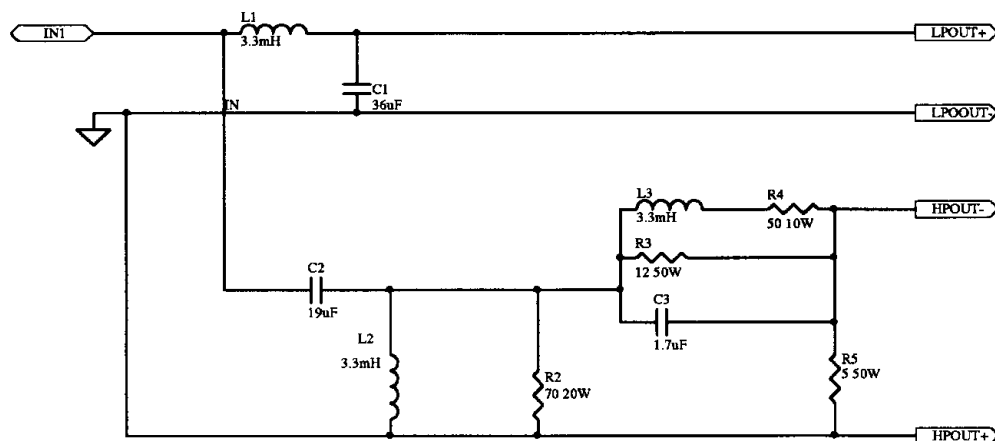
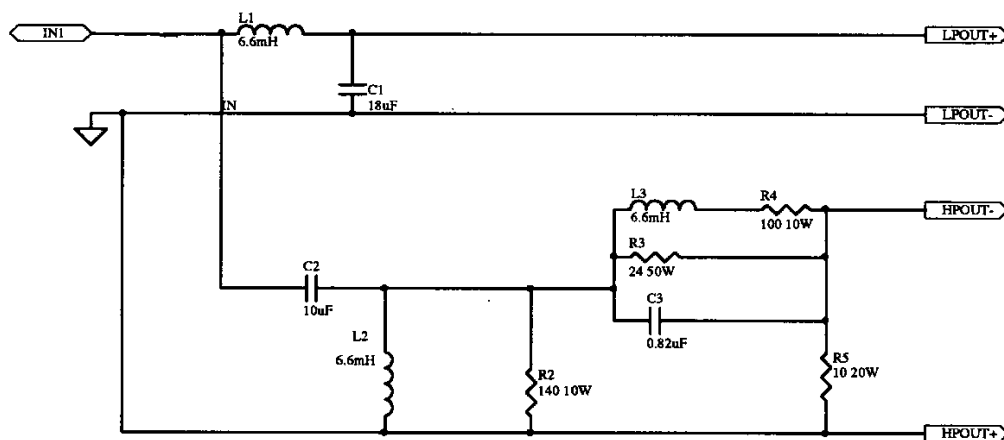


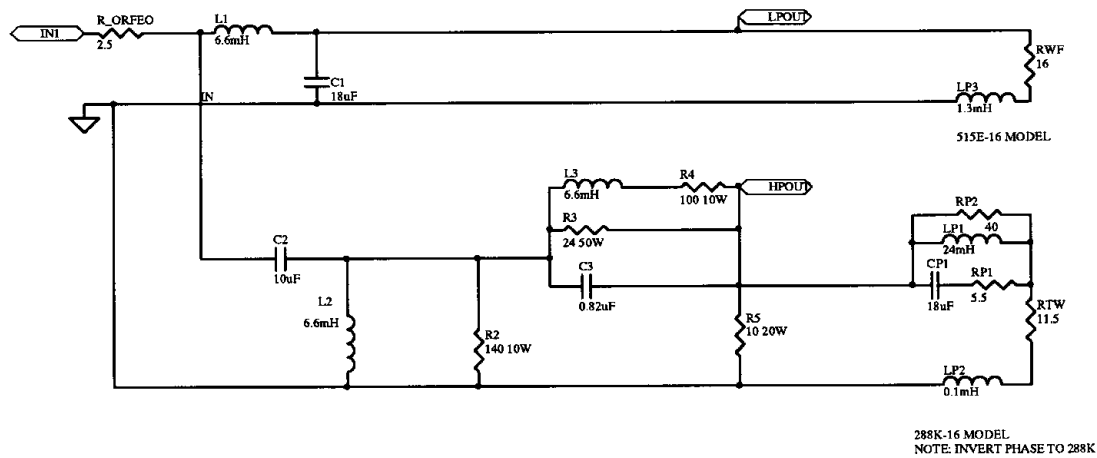
Crossover for Altec A5 devised by Jean Hiraga, editor of La Nouvelle Revue du Son,  
 excerpted from the article La Voice of the Theatre Chez Nous by John Stronczer  
 which originally appeared in Sound Practices #11



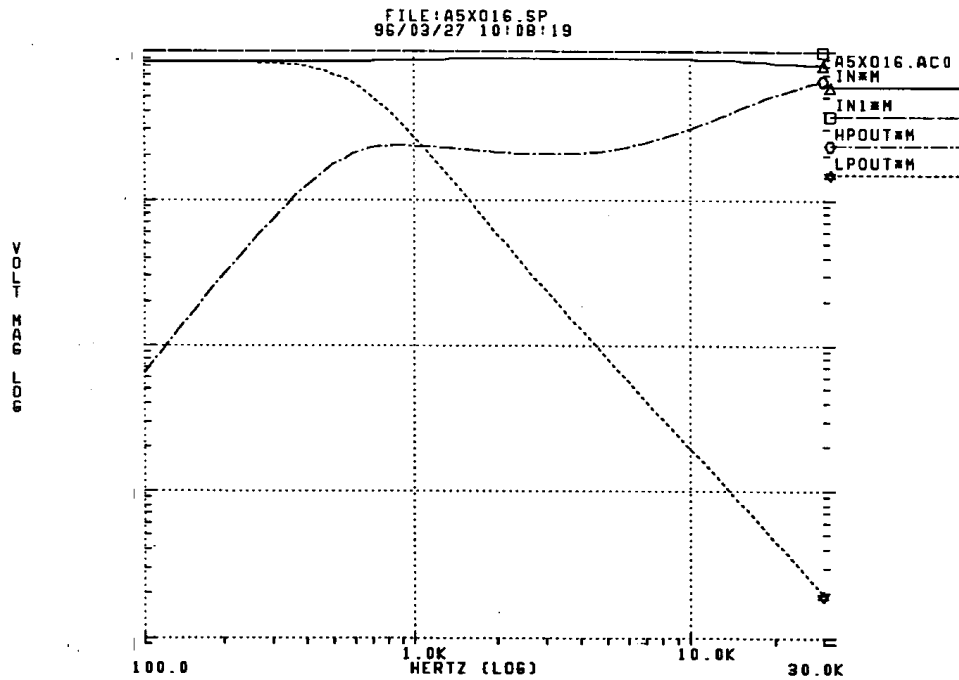
Jean Hiraga's crossover for 8 ohm drivers



Jean Hiraga's crossover for 16 ohm drivers



SPICE simulation schematic, including models of 288HF driver, 515E-16 model, and simulated output impedance of Orfeo SE 845 amp



Response of LF , equalized HF driver , and summed response