

# Service Manual

FM/AM Stereo Tuner

## SU-3500 / ST-3500

(XGB), (XGS) (XGB), (XGS)

**Supplementary**

For additional information, please refer to the service manual for Model SU-3500 (ORDER NO. AD7303-070) and ST-3500 (ORDER NO. AD7405-071).

**Notes:** \* This service manual supplementary includes only the changes of **SU-3500** (ORDER NO. AD7303-070) and **ST-3500** (ORDER NO. AD7405-071).

\* When servicing model **SU-3500(XGB), (XGS)** and model **ST-3500(XGB), (XGS)**, this service manual supplementary and **SU-3500** (ORDER NO. AD7303-070) and **ST-3500** (ORDER NO. AD7405-071) service manual should be used together.

### CHANGES SU-3500 (XGB), (XGS)

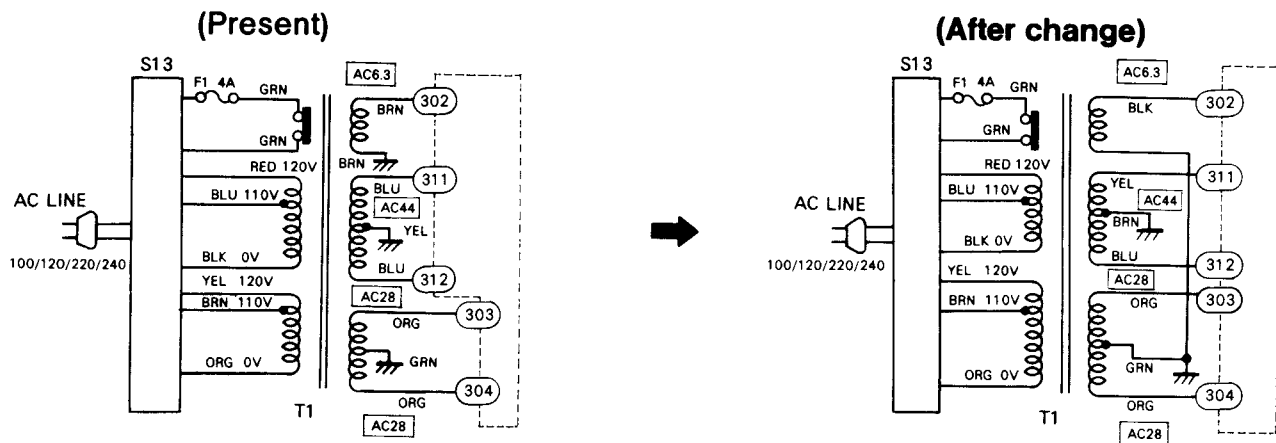
#### REPLACEMENT PARTS LIST

Ref. No.	Change of Parts No.		Description	Per Set (Pcs.)	Remarks
	SU-3500	→ SU-3500 <sup>(XGB)</sup> (XGS)			
TR101 ~ 104	2SA722T	2SA902S-F	Equalizer Amplifier	4	
TR201(x2), 202(x2)	2SA722T	2SA902-F	Tone Amplifier	4	
T1	SLTA5Q24S	SLTA5Q27S	Power Transformer	1	
R502, 503	ERD18FJ2R2	ERQ12HJ2R2	2.2Ω, 1/2 W, ±5%, Fuse Type Metallic	2	
R329, 330	Addition	ERD25TJ105	1MΩ, 1/4 W, ±5%, Carbon	2	
R331	Addition	ERD25TJ562	5.6kΩ, 1/4 W, ±5%, Carbon	1	
C522, 524	ECEA25V47	ECEA25V10	10μF, 25 WV, Electrolytic	2	
C528	ECEA25V100	ECEA25V10	10μF, 25 WV, Electrolytic	1	
C502	ECEA63V47L	ECEA63V100V	100μF, 63 WV, Electrolytic	1	
F1	XBAS2A4001	XBA2E40NS5	Fuse, 4 A, Power Source	1	
F4	XBAS2B2002	XBA2K20NS5	Fuse, 2 A, Power Source	1	
	SSYA1	SSY13	Relay, Power Source Circuit	1	
S12	SSLA20S	SSLA27-1S	Switch, Power Source	1	
for [XGB] only	SYWA160A	SYWA162A	Black Panel, Front, Only Set for [XGB]	1	
CA35	SJFA107	QTF1046	Holder, Circuit Protection Fuse	1	
CA37	SJFA1	QTF1046	Holder, Power Source Fuse	1	
CA38	SJAA3	SJAA3-1	AC Cord	1	
CA40	SJPA9201	SJP9205	Short Pin, Pre & Main Amplifier	2	
CA41	SJP9103	SJPA11	Short Pin Plug, PHONO-2 Terminal	2	
CH3	SJJA14	SJJA14-1	Jack, Headphones	1	
P3	SPSA73	Deletion	-----	0	
P4	SPSA70	Deletion	-----	0	

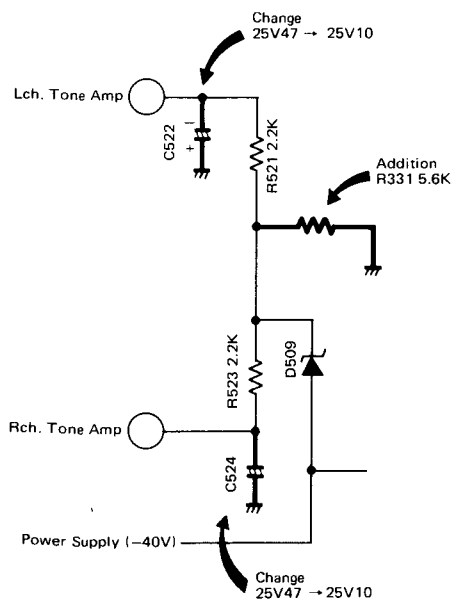
Ref. No.	Change of Parts No.		Description	Per Set (Pcs.)	Remarks
	SU-3500	→ SU-3500 (XGB) (XGS)			
P5	SPNA230A	Deletion	-----	0	
P6	SPSA30	Deletion	-----	0	
P7	SPGA440A	SPG815	Carton Box, Outer	1	○
P10	Addition	SPS475	Pad, Outside	1	
P11	Addition	SPS579	Pad, Inside	1	○
P12	Addition	SPS473	Pad, Lower	1	

## ■ CHANGE OF SCHEMATIC DIAGRAMS

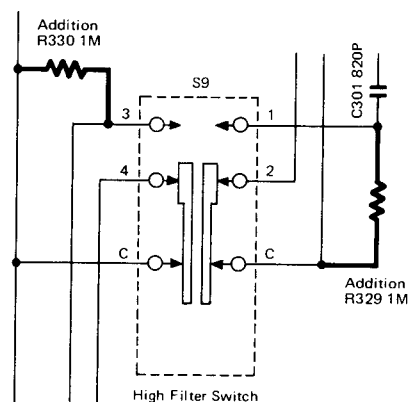
### • Power Supply



### • Tone Amp Power Supply



### • High Filter Switch



# CHANGES

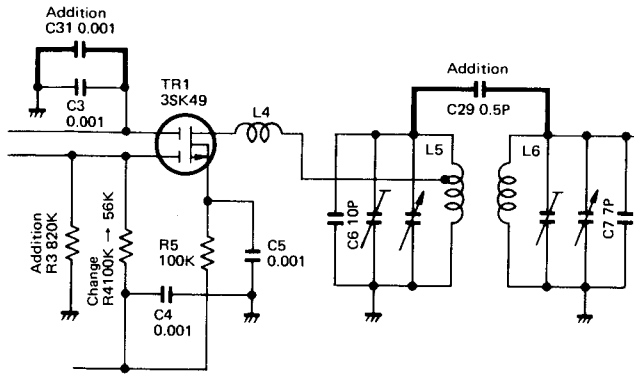
ST-3500 (XGB), (XGS)

## ■ REPLACEMENT PARTS LIST

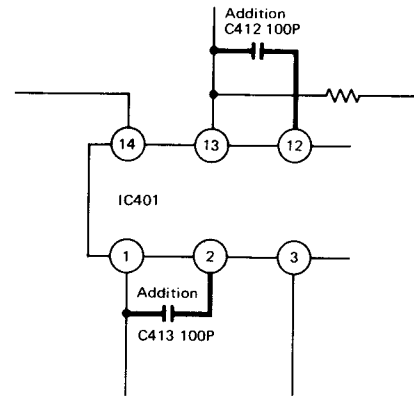
Ref. No.	Change of Parts No.		Description	Per Set (Pcs.)	Remarks
	ST-3500	→ ST-3500 (XGB) (XGS)			
D106, 107	OA99	MA150	Diode, AGC	2	
L201	RLM1X2-D	ELQ393D599G	Choke Coil	1	
R19	ERD14TJ102	ERD25TJ821	820Ω, 1/4 W, ± 5%, Carbon	1	
R15	ERD14VJ103	ERD25TJ104	100 kΩ, 1/4 W, ± 5%, Carbon	1	
R16	ERD14VJ153	ERD25TJ222	2.2 kΩ, 1/4 W, ± 5%, Carbon	1	
R4	ERD14TJ104	ERD25TJ563	56 kΩ, 1/4 W, ± 5%, Carbon	1	
R17	ERD14VJ274	ERD25TJ153	15 kΩ, 1/4 W, ± 5%, Carbon	1	
R3	Addition	ERD25TJ824	820 kΩ, 1/4 W, ± 5%, Carbon	1	
C13	ECCD1H070DC	ECCD1H050CC	5 pF, 50 WV, ± 0.25 pF, Ceramic	1	
C29	Addition	ECCD1H0R5CC	0.5 pF, 50 WV, ± 0.25 pF, Ceramic	1	
C151	ECCD1H390KC	ECCD1H101K	100 pF, 50 WV, ± 10%, Ceramic	1	
C30, 31	Addition	ECKD1H102PF	0.001 μF, 50 WV, ± 100% <sub>0</sub> , Ceramic	2	
C18	ECKD1H102PF	ECCD1H150KC	15 pF, 50 WV, ± 10%, Ceramic	1	
C163, 164	ECKD1H222MD	ECKD1H102PF	0.001 μF, 50 WV, ± 100% <sub>0</sub> , Ceramic	2	
C171	ECKD1H223PF	Deletion	-----	0	
C412, 413	Addition	ECCD1H101K	100 pF, 50 WV, ± 10%, Ceramic	2	
C407, 408	ECQG05332KZN	ECQM05102KZN	0.001 μF, 50 WV, ± 10%, Polyester	2	
S3	SSLA26S	SSLA26-1S	Delay Time Switch	1	
S4	SSLA25S	SSLA25-1S	MPX Hi-Blend Switch	1	
F1	XBAS1B0302	XBA1E03NR5	Fuse, 0.3 A	1	
F2	XBAS1B0502	XBA1K05NS5	Fuse, 500 mA	1	
for [XGB] only	SYWT3500X1	SYWT3500X2	Black Panel, Front Only Set for [XGB]	1	○
CA21	SHGA925	Deletion	-----	0	
CH3	SSMA26-1	SSMA26-2	Meter, FM Tuning	1	
CH4	SSMA25-1	SSMA25-2	Meter, Signal	1	
CH6	SUMA8	SUMA8-2	Mounting, Dial Scale	1	
CH18	RDZ05-5	RDZ05C	Cord, Dial	1 roll	
P2	SPSA31	SPSA31-1	Pad, AM Bar Antenna	1	
P3	SPP163	SPHA2	Polyethylene Sheet	1	
P4	SPSA73	Deletion	-----	0	
P5	SPSA70	Deletion	-----	0	
P6	SPNA250A	Deletion	-----	0	
P7	SPSA30	Deletion	-----	0	
P8	SPGA490A	SPG817	Carton Box, Outer	1	○
P10	Addition	SPS475	Pad, Outside	1	
P11	Addition	SPS579	Pad, Inside	1	
P12	Addition	SPS473	Pad, Lower	1	

## ■ CHANGE OF SCHEMATIC DIAGRAMS (Addition & Deletion Parts)

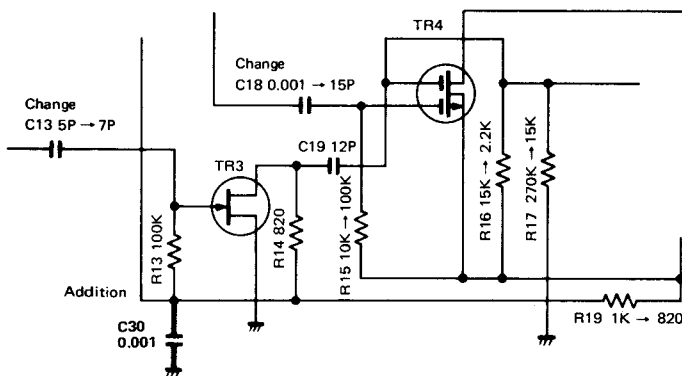
### • FM RF Amplifier Circuit



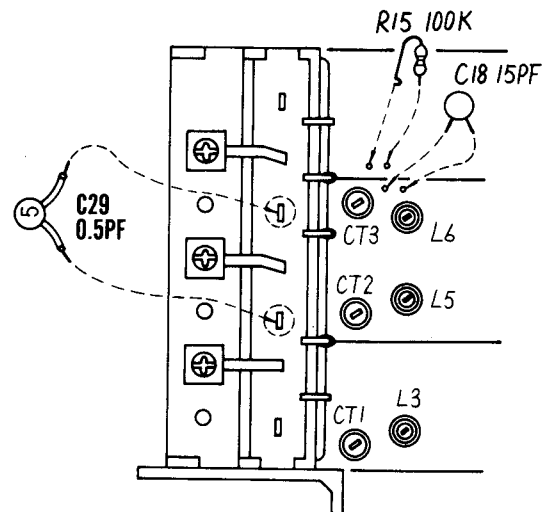
### • AF Amplifier Circuit



### • FM Mixer Circuit



### • FM RF Amplifier p.c.b. Top View



## ■ CHANGE OF PACKINGS.....SU-3500/ST-3500

