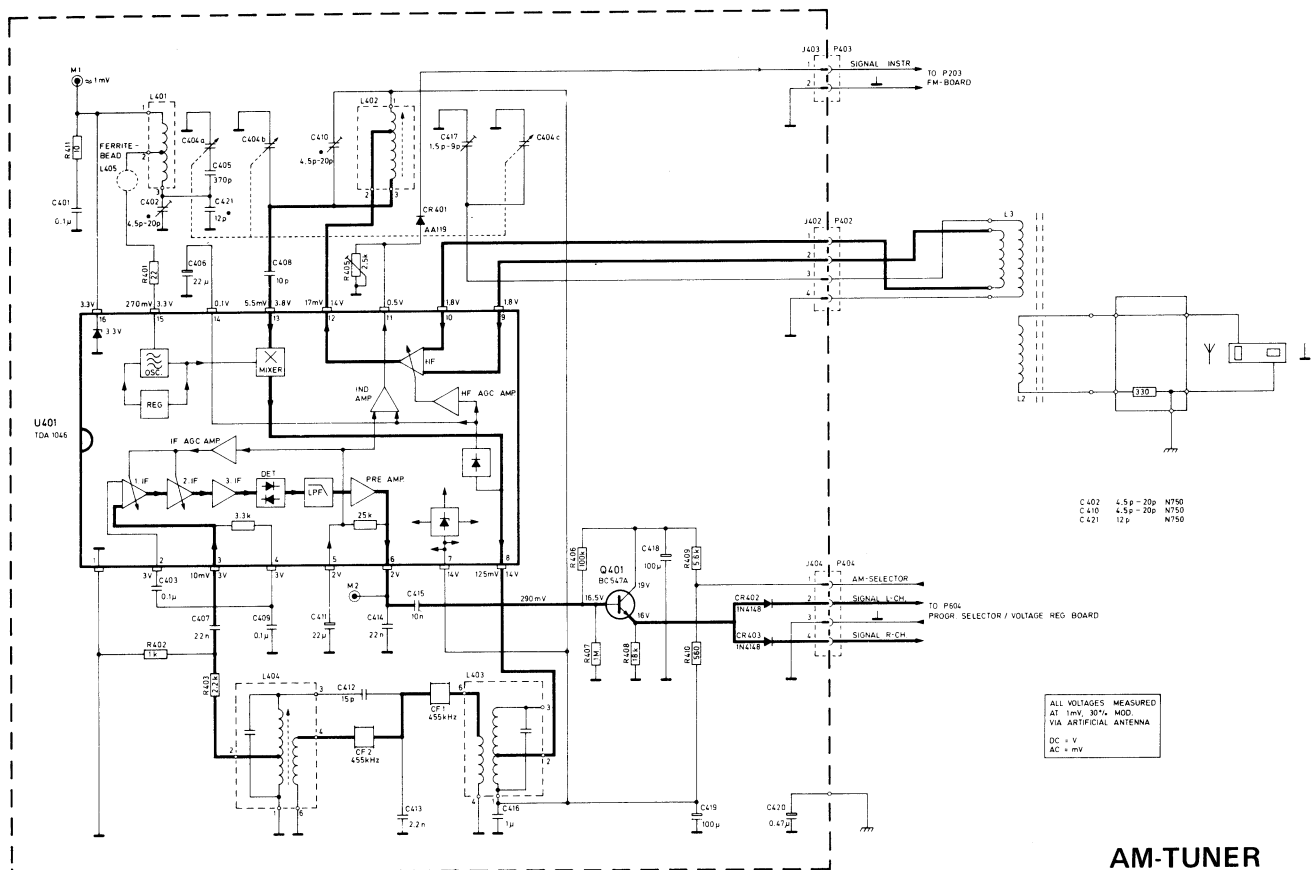


TANDBERG

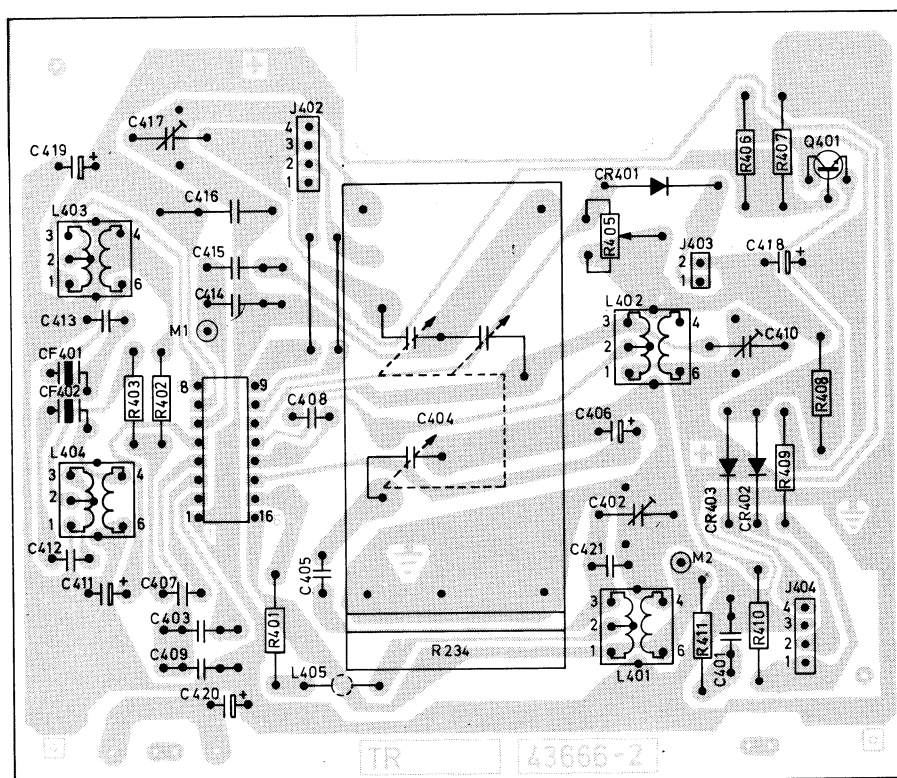
TR 2075 MkII

Circuit diagrams and PW - boards
Skjemaer og TL - kort



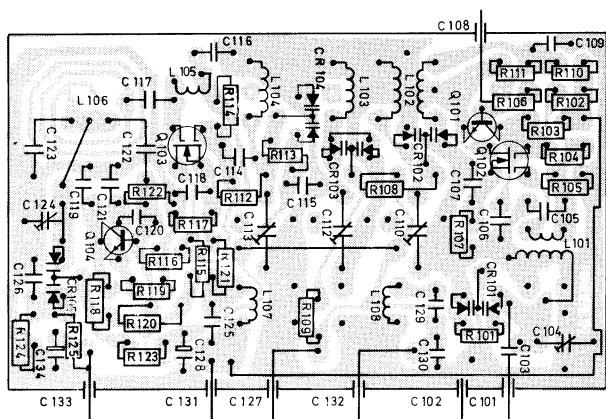
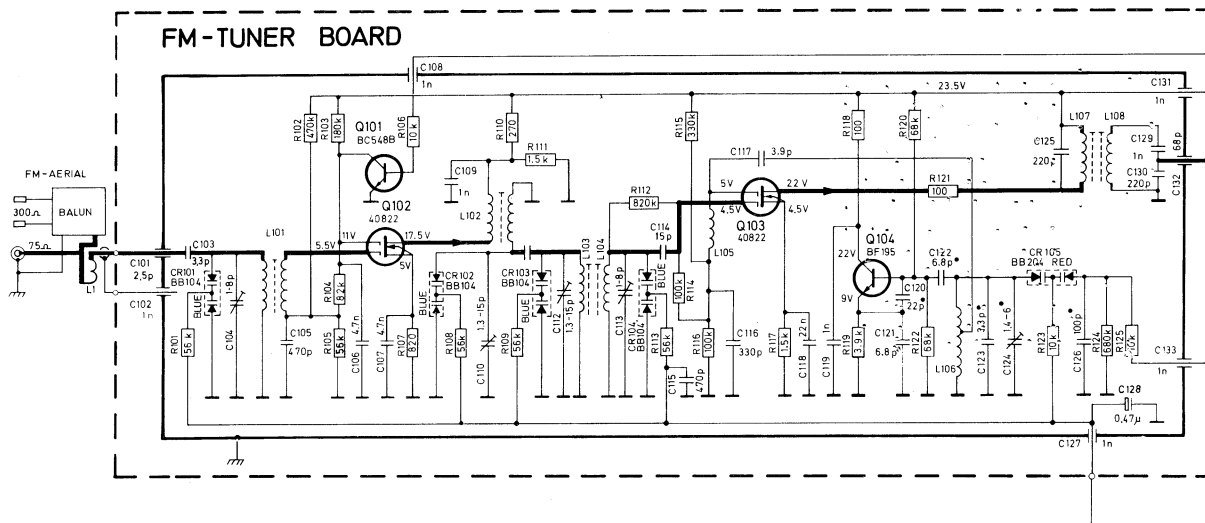


AM-TUNER

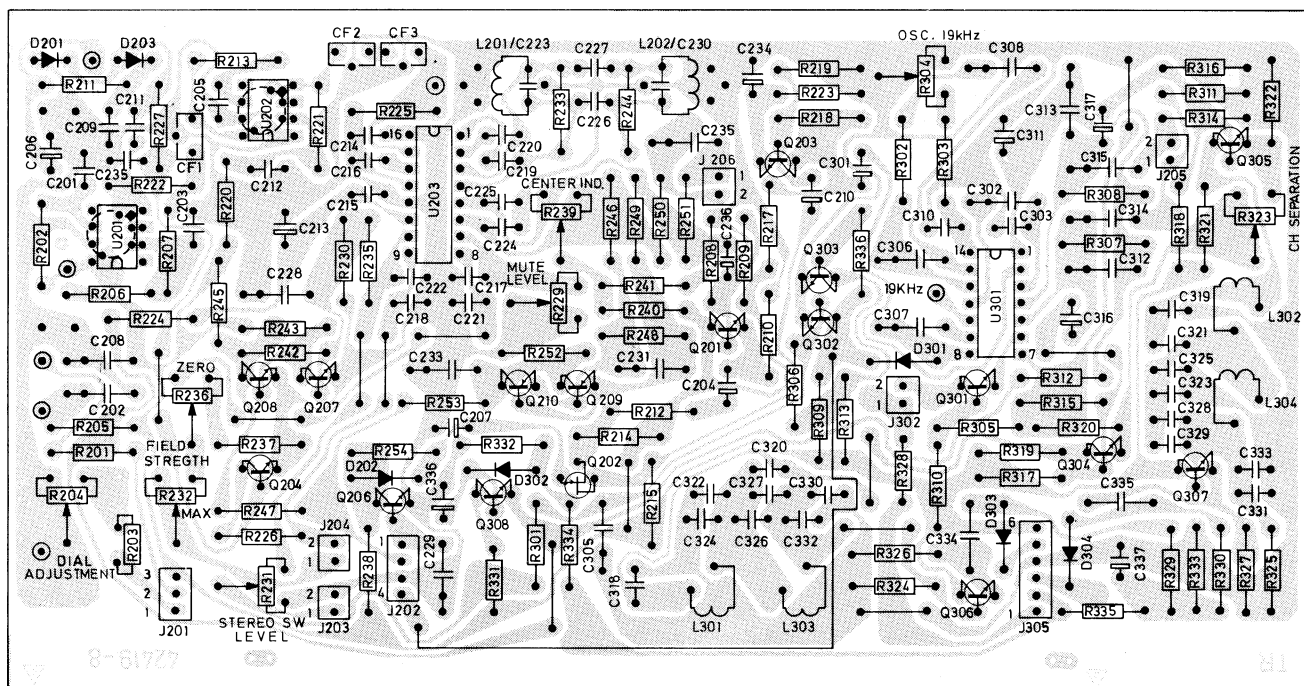


PW-BOARD, AM-TUNER
TL-KORT, AM-TUNER

All PW-boards are seen from the solder side
Alle TL-plater er sett fra loddessiden



PW-BOARD, FM-TUNER
TL-KORT, FM-TUNER

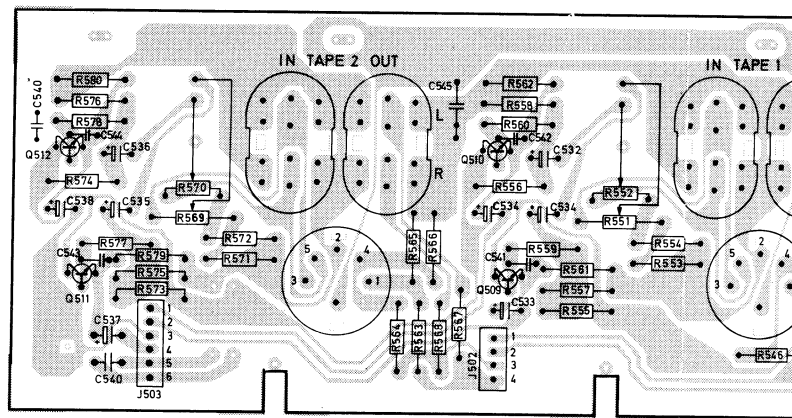


PW-BOARD, FM-IF AND DECODER
TL-KORT, FM-MF OG DEKODER

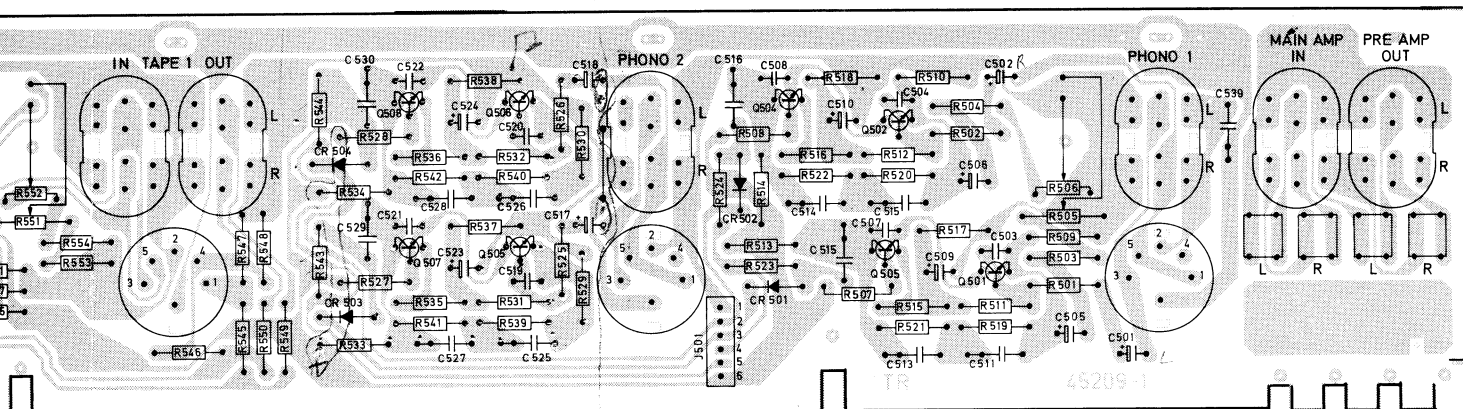
All PW-boards are seen from the solder side
Alle TL-plater er sett fra loddessiden

C117
C120
C121
C122
C123
C124
C125
C126

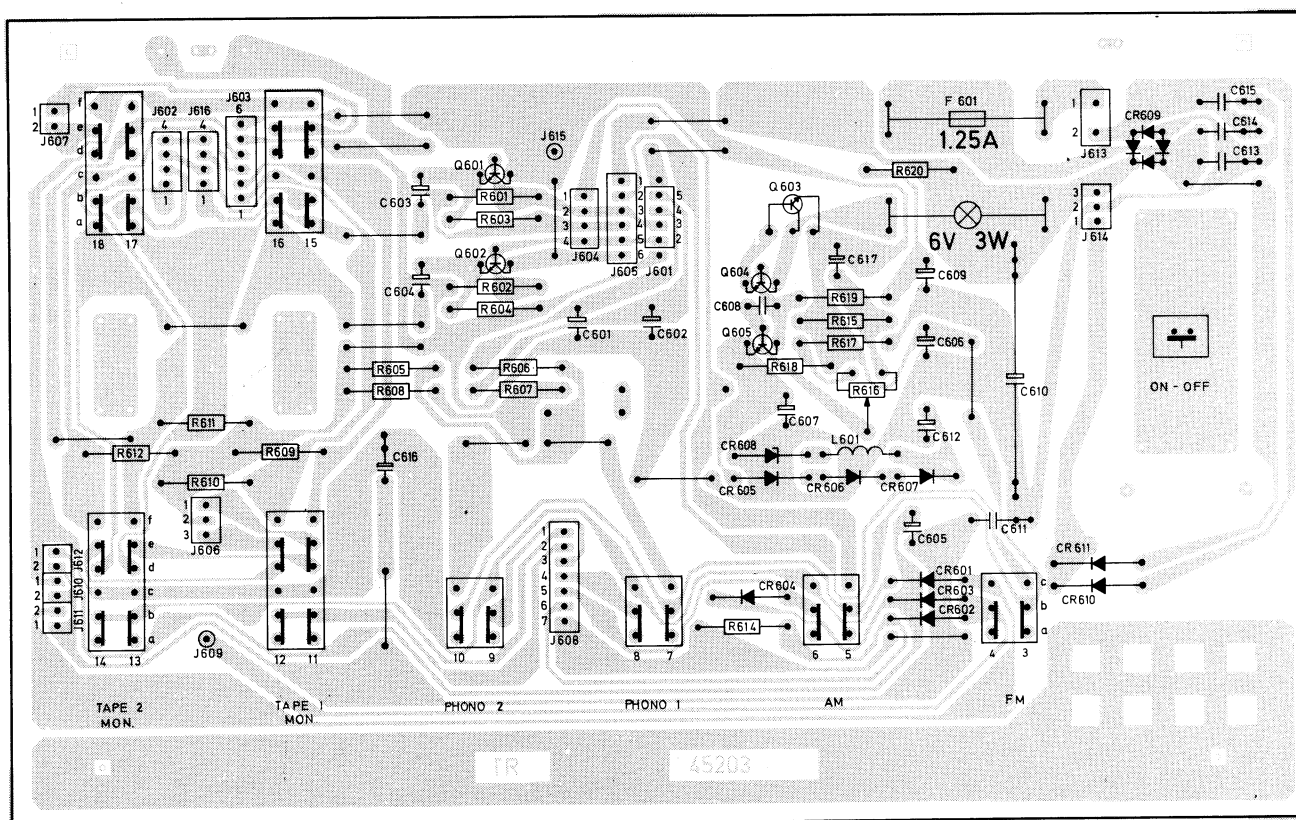
- 3



All PW-
Alle TL



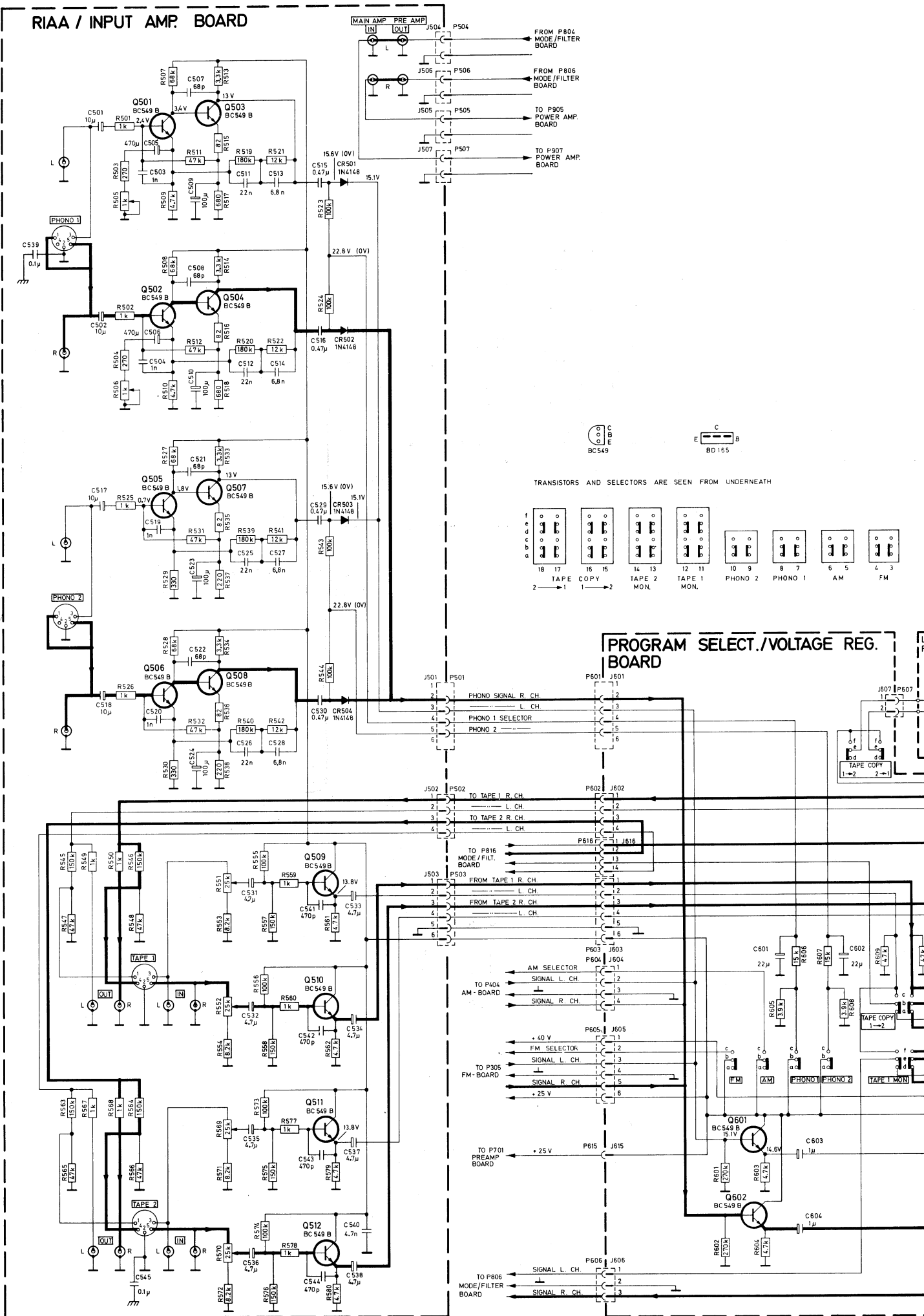
PW-BOARD, RIAA-AMPLIFIER
TL-KORT, RIAA-FORSTERKER

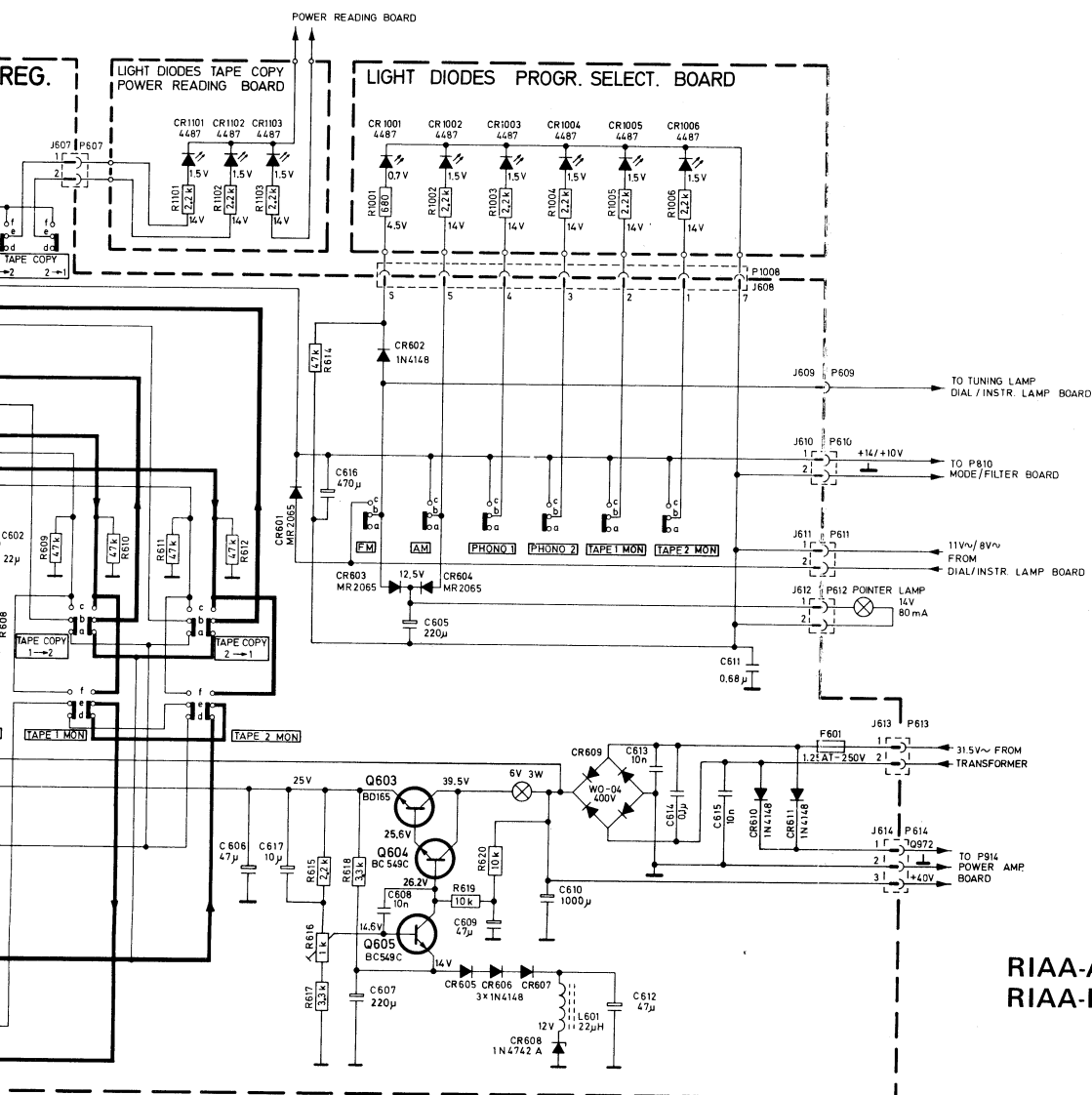


PW-BOARD, PROGRAM SELECTOR
TL-KORT, PROGRAMVELGER

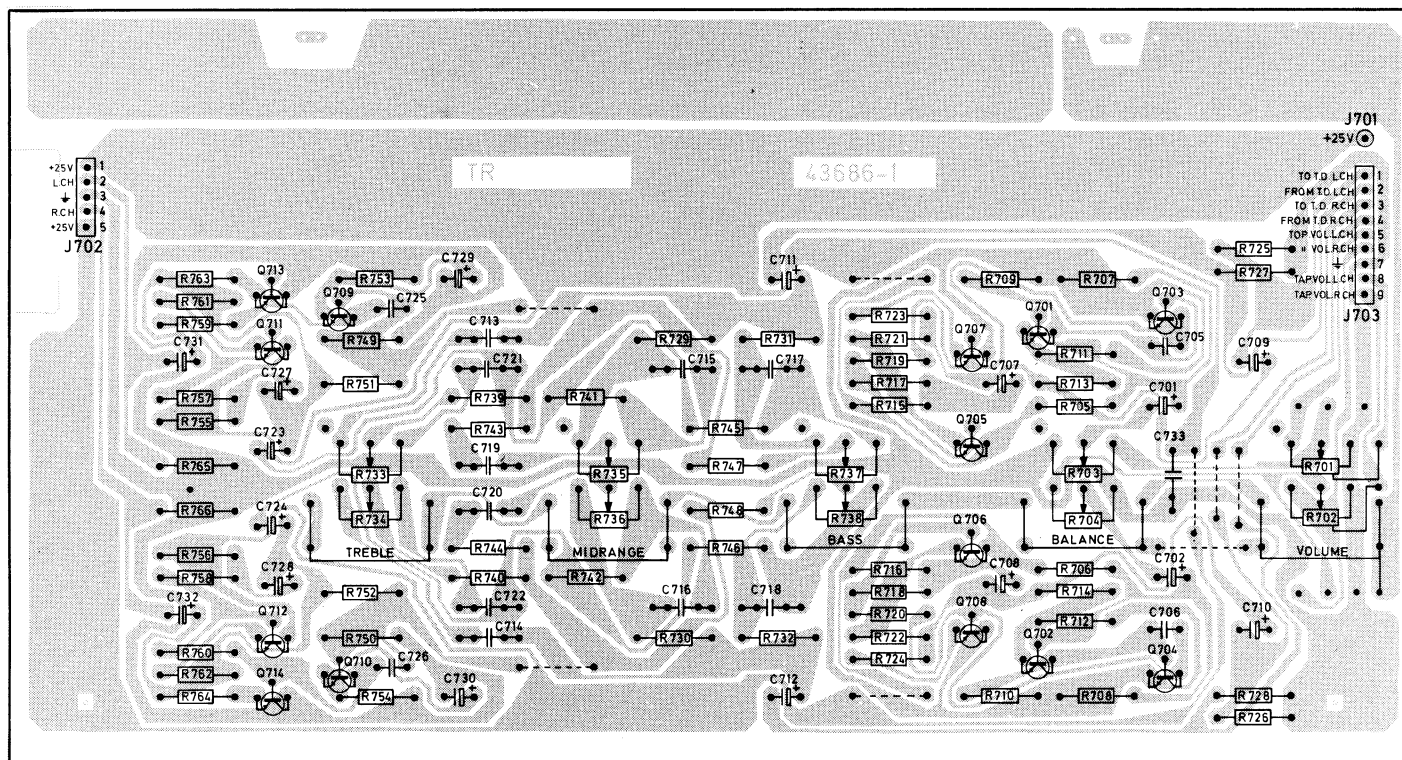
All PW-boards are seen from the solder side
Alle TL-plater er sett fra loddensiden

RIAA / INPUT AMP. BOARD

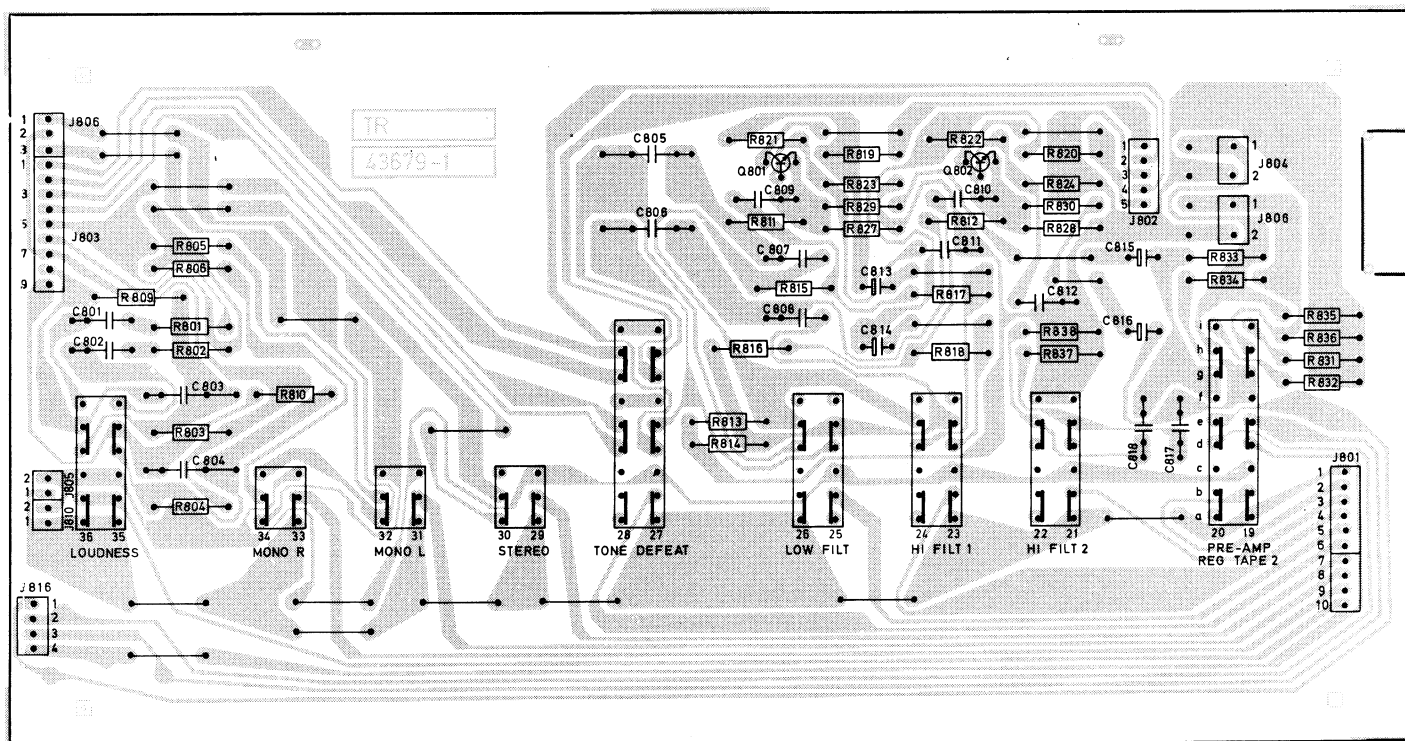




RIAA-AMPLIFIER/PROGRAM SELECTOR
RIAA-FORSTERKER/PROGRAMVELGER



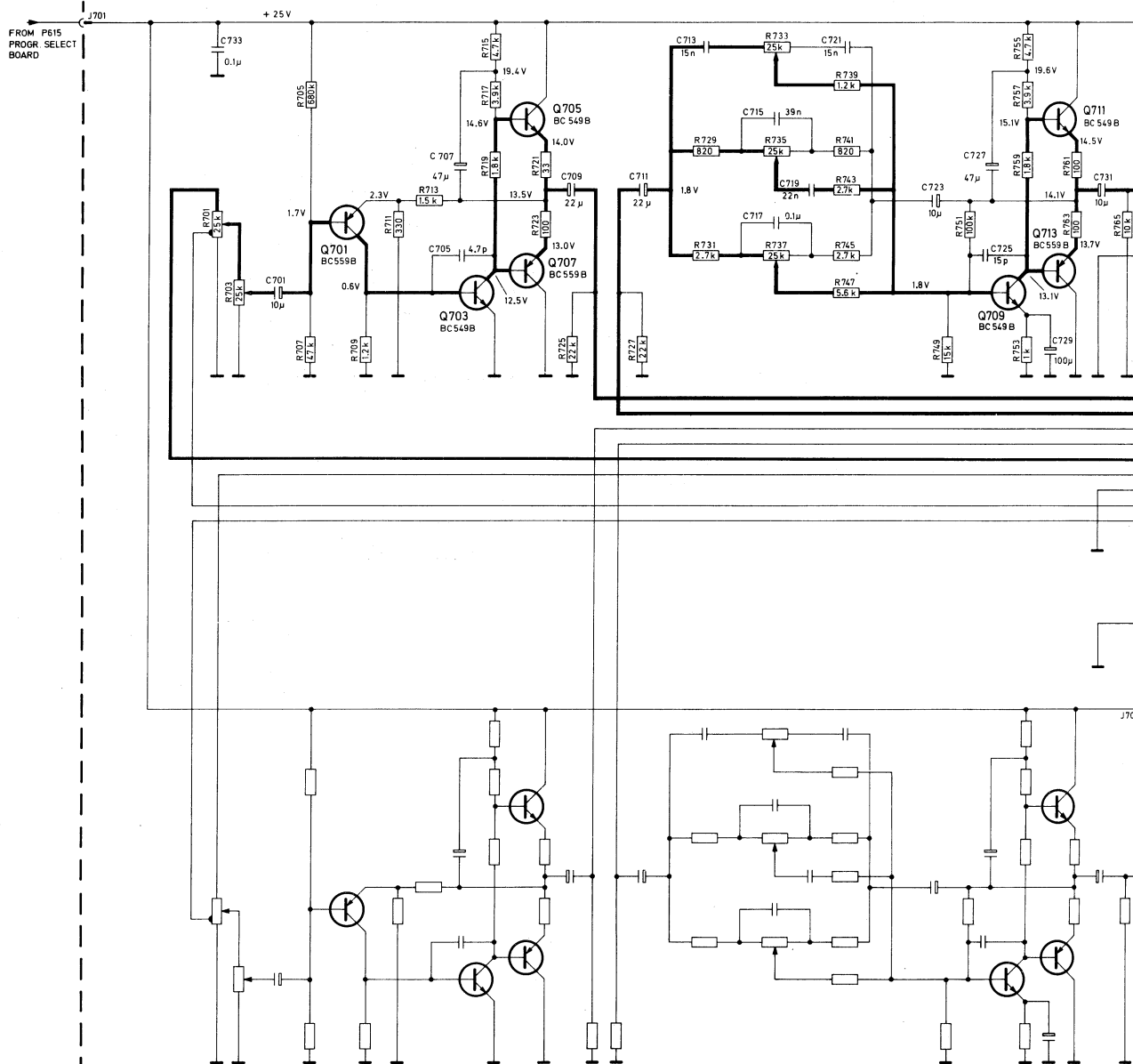
PW-BOARD, PREAMPLIFIER/TONE CONTROL
TL-KORT, FORFORSTERKER/TONEKONTROLL

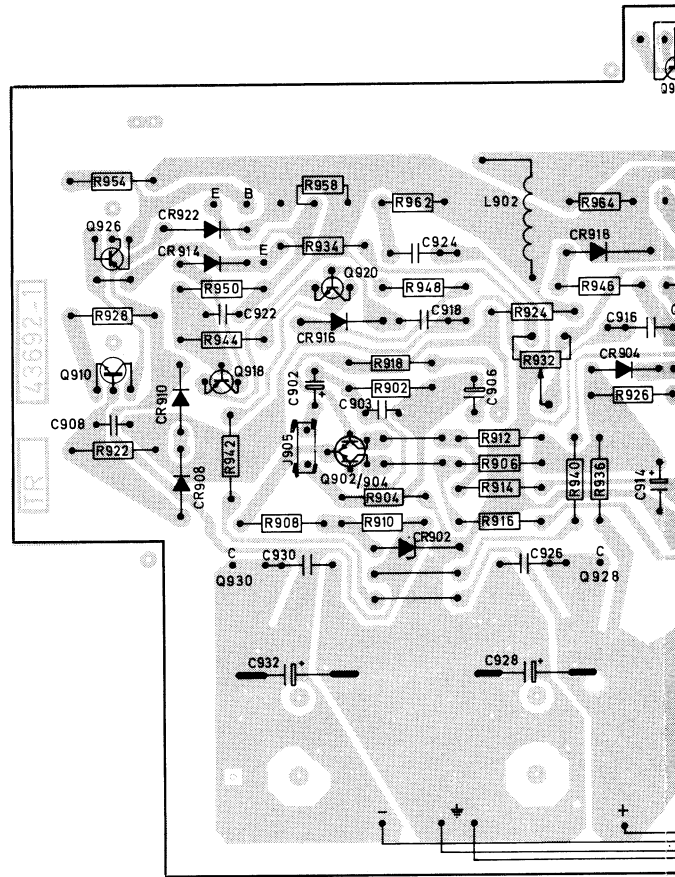


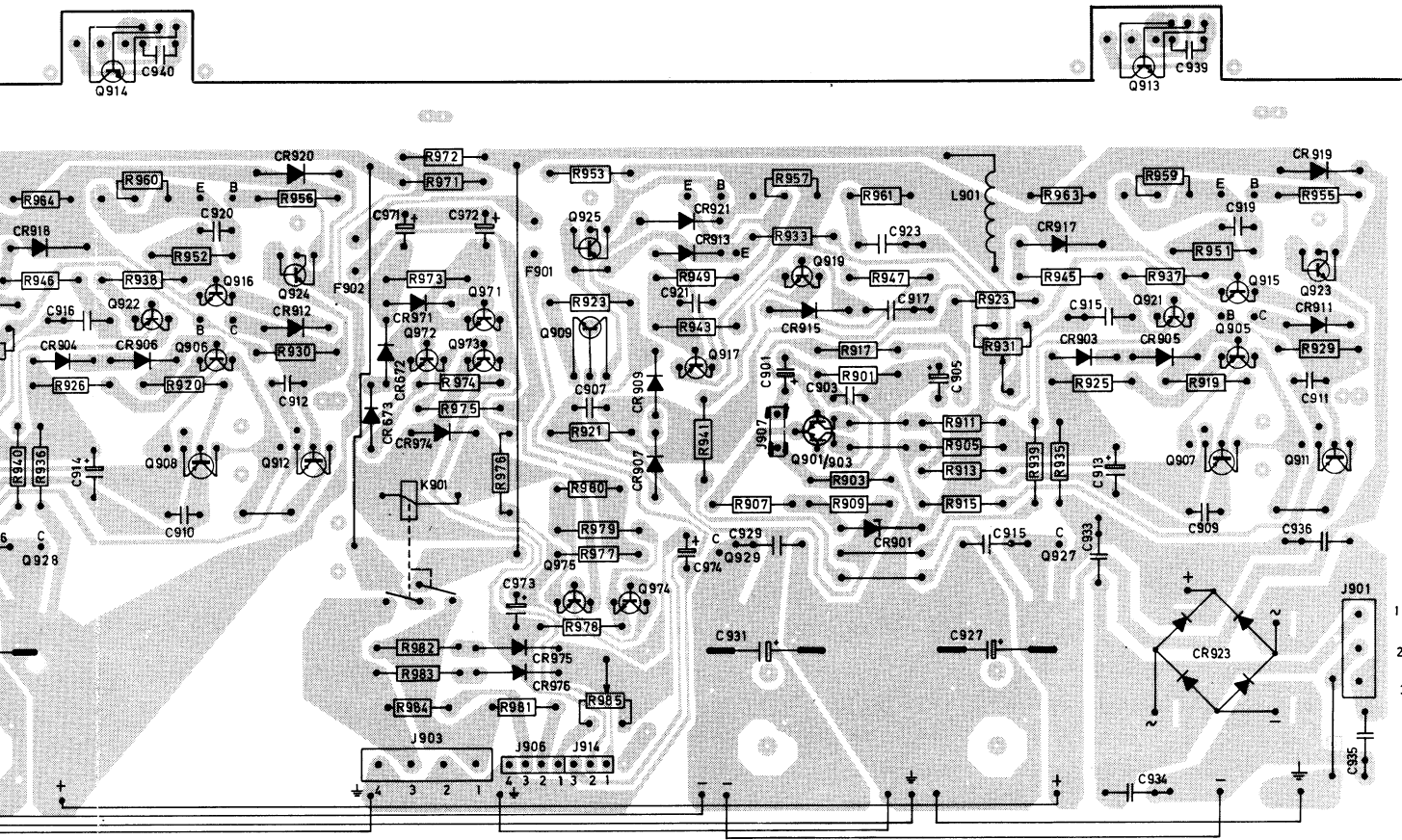
PW-BOARD, MODE FILTER
TL-KORT, FILTER

All PW-boards are seen from the solder side
Alle TL-plater er sett fra loddessiden

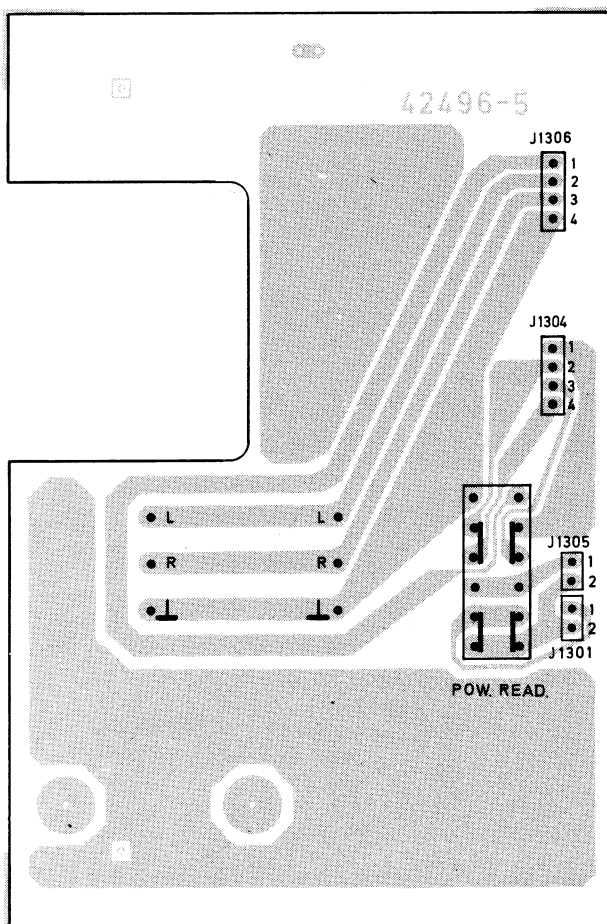
PREAMPLIFIER BOARD







PW-BORD, POWER AMPLIFIER
TL-KORT, UTGANGSFORSTERKER



PW-BORD, POWER READING
TL-KORT, EFFEKTAVLESNING

*All PW-boards are seen from the solder side
Alle TL-plater er sett fra loddessiden*

DIAL/ INSTR. LAMPS BOARD

FROM P302
FM-BOARD

TO P609
PROGR. SELECT
BOARD

TO P611
PROGR. SELECT
BOARD

FM-STEREO
LAMP

SIGNAL LAMP

TUNING LAMP

DIAL LAMP

12 V 3 W

12 V 3 W

12 V 3 W

POWER-AMPLIFIER BOARD

FROM P507
RIAA/INPUT
BOARD

SIGNAL L-CH.

P907

J907

C901

10 μ

-0.1V

Q901/Q903

25C 1583

R907

33 Ω

R909

47 Ω

C903

1n

R901

10k

R903

100

C907

180p

R921

22 Ω

CR907

2N4148

Q909

BF 361

-51.1V

-51.7V

CR909

2N4148

Q913

BC548B

-1.1V

Q917

BC558C

1.1V

Q919

BC548C

FROM P505
RIAA/INPUT
BOARD

SIGNAL R-CH.

P905

J905

C901

10 μ

-0.1V

Q901/Q903

25C 1583

R907

33 Ω

R909

47 Ω

C903

1n

R901

10k

R903

100

C907

180p

R921

22 Ω

CR907

2N4148

Q909

BF 361

-51.1V

-51.7V

CR909

2N4148

Q913

BC548B

-1.1V

Q917

BC558C

1.1V

Q919

BC548C

+52.5V

C925

0.1 μ

Q923

FT1317A

Q927

2N5630

Q929

2N6030

Q931

2N6030

Q933

2N6030

Q935

2N6030

Q937

2N6030

Q939

2N6030

Q941

2N6030

Q943

2N6030

Q945

2N6030

Q947

2N6030

Q949

2N6030

Q951

2N6030

Q953

2N6030

Q955

2N6030

Q957

2N6030

Q959

2N6030

Q961

2N6030

Q963

2N6030

Q965

2N6030

Q967

2N6030

Q969

2N6030

Q971

2N6030

Q973

2N6030

Q975

2N6030

Q977

2N6030

Q979

2N6030

