

# TA-E901

PRELIMINARY

US Model  
AEP Model  
UK Model



## STEREO PREAMPLIFIER

### SPECIFICATIONS

**Power Requirements:** US and Canadian models : 120 V ac,  
60 Hz, 27 watts  
AEP model: 220 V ac (or 240 V ac  
adjustable by authorized Sony  
personnel), 50 Hz, 35 watts  
UK model : 240 V ac (or 220 V ac  
adjustable by authorized Sony  
personnel), 50 Hz, 35 watts

**AC Outlets (only for the US and Canadian models):**  
SWITCHED (450 watts capacity)  
UNSWITCHED (450 watts capacity)  
**Dimensions:** Approx. 480(w)x105(h)x465(d)mm  
19(w)x4<sup>1</sup>/<sub>4</sub>(h)x13<sup>3</sup>/<sub>4</sub>(d) inches

**Weight:** Approx. 12.5 kg, 27 lbs 9 oz, net  
Approx. 13.9 kg 30 lbs 11 oz, in  
shipping carton

— Continued on page 2 —

### SAFETY-RELATED COMPONENT WARNING!!

COMPONENTS IDENTIFIED BY SHADING AND MARK  
⚠ ON THE SCHEMATIC DIAGRAMS, EXPLODED  
VIEWS AND IN THE PARTS LIST ARE CRITICAL TO  
SAFE OPERATION. REPLACE THESE COMPONENTS  
WITH SONY PARTS WHOSE PART NUMBERS APPEAR  
AS SHOWN IN THIS MANUAL OR IN SUPPLEMENTS  
PUBLISHED BY SONY.

**SONY**  
**SERVICE MANUAL**

**System:**

- Head amplifier
- Complementary-symmetry differential amplifier with no NFB loop
- Equalizer amplifier and Flat amplifier
- 1st: Bootstrapped cascode differential
- 2nd: Cascode differential amplifier
- Output: Darlington emitter-follower
- single ended push output
- (equalizer amp : NF type)

**Inputs:**

		Sensitivity	Impedance	Maximum input level (1 kHz)	S/N (A network)
PHONO 1	MM	2.5 mV	50 k $\Omega$	180 mV	84 dB, 80 dB*
PHONO 2	MC	0.125 mV	200 $\Omega$	9 mV	72 dB, 70 dB*
TUNER, AUX 1, 2 TAPE 1, 2		150 mV	50 k $\Omega$	12 V	102 dB, 88 dB*

\*: 1978 IHF

**Outputs:**

	Voltage	Impedance
REC OUT 1, 2	150 mV (max. 12 V)	1 k $\Omega$
OUTPUT 1, 2	1.5 V (max. 12 V)	100 $\Omega$
HEADPHONES	670 mV	10 $\Omega$

**Harmonic Distortion:** Less than 0.008 % (at 8 V output)

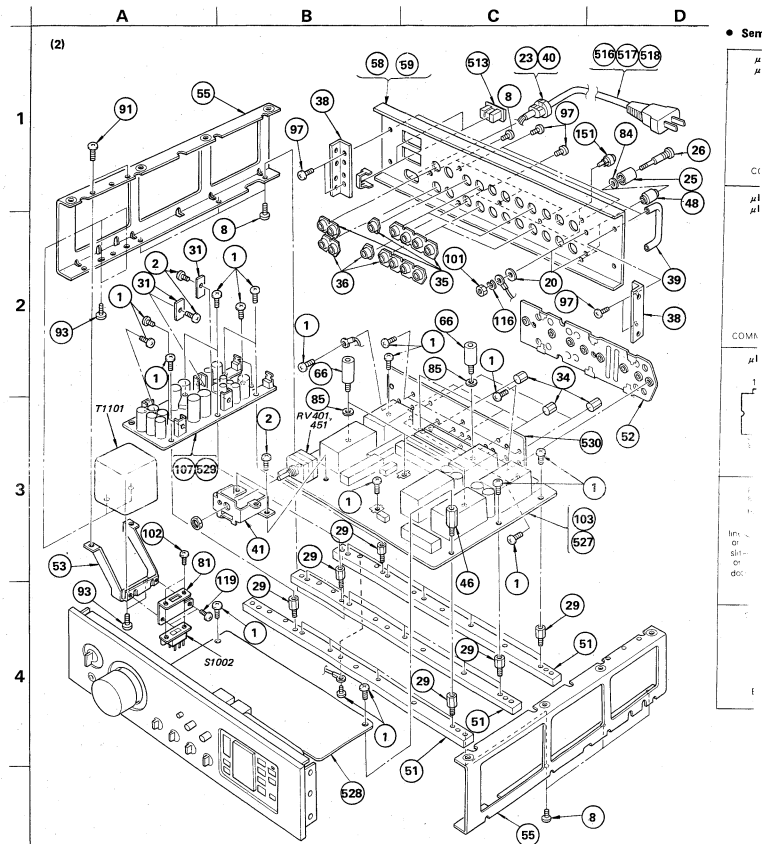
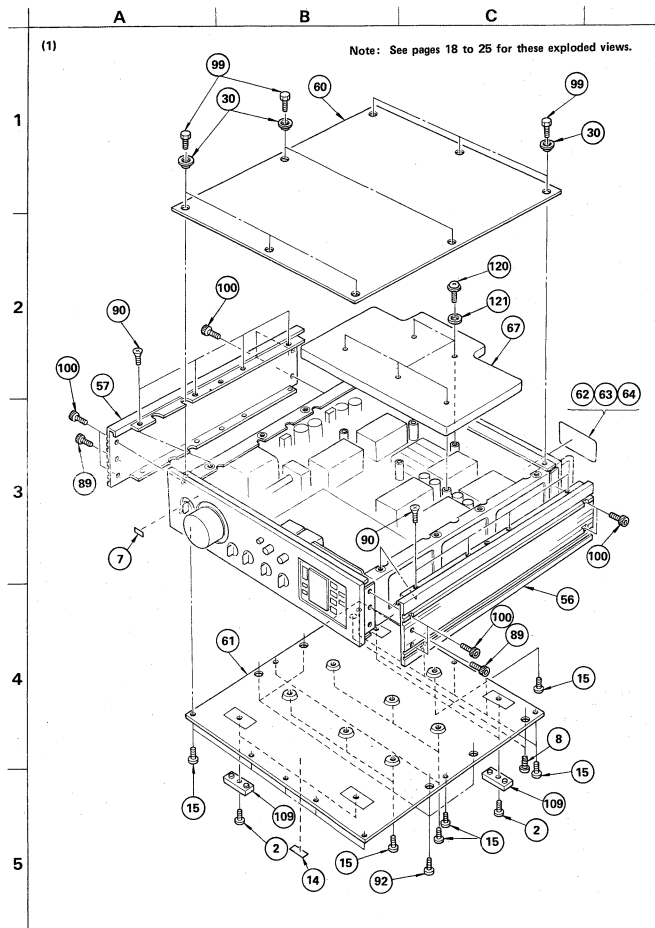
**Intermodulation (IM) Distortion (60 Hz : 7 kHz = 4 : 1):** Less than 0.008 % (at 8 V output)

**Frequency Response:** PHONO 1,2 : RIAA equalization curve  $\pm 0.2$  dB  
TUNER, AUX, TAPE 1,2 :  
5 Hz ~ 200 kHz  $\pm 0.1$  dB

**Tone Controls:** BASS :  $\pm 10$  dB at 60 Hz  
(turnover freq. 300 Hz)  
TREBLE :  $\pm 10$  dB at 25 kHz  
(turnover freq. 5 kHz)

**Filter (PHONO inputs):** SUBSONIC 12 dB/octave attenuation below 15 Hz

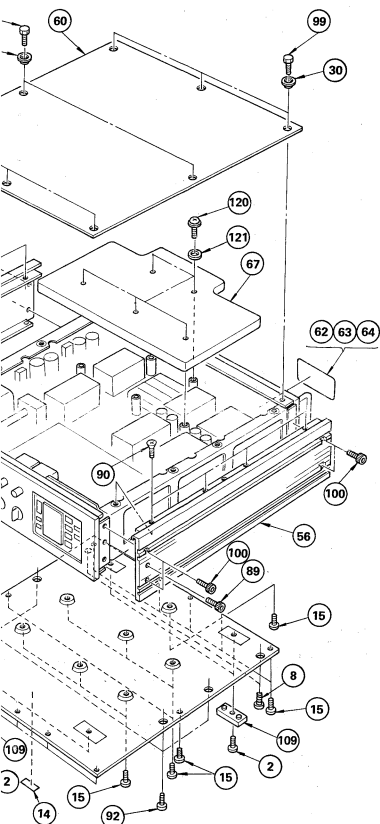
**Residual Noise:** 12  $\mu$ V (A weighting network, IHF)



B

C

Note: See pages 18 to 25 for these exploded views.



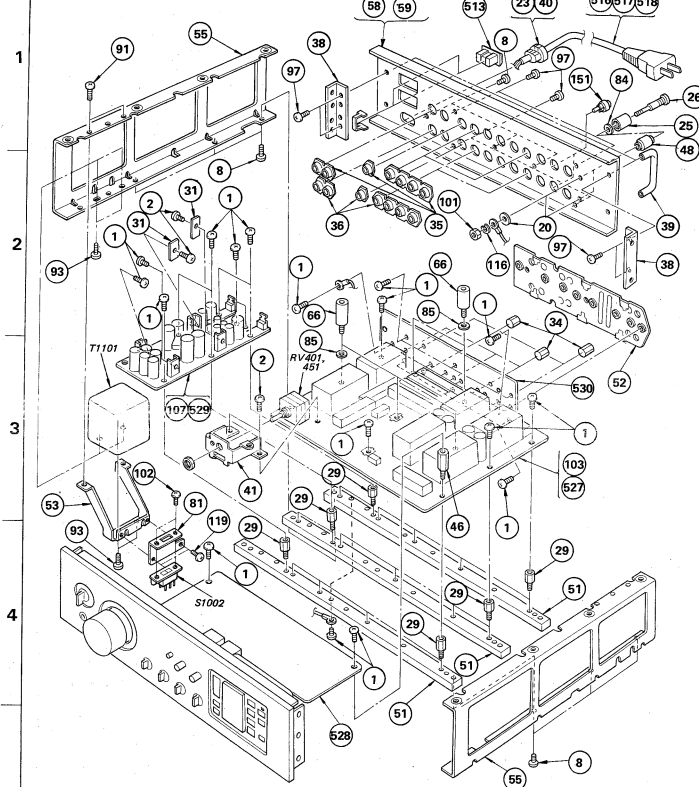
(2)

A

B

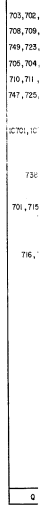
C

D



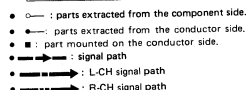
## Semiconductors Lead Layout

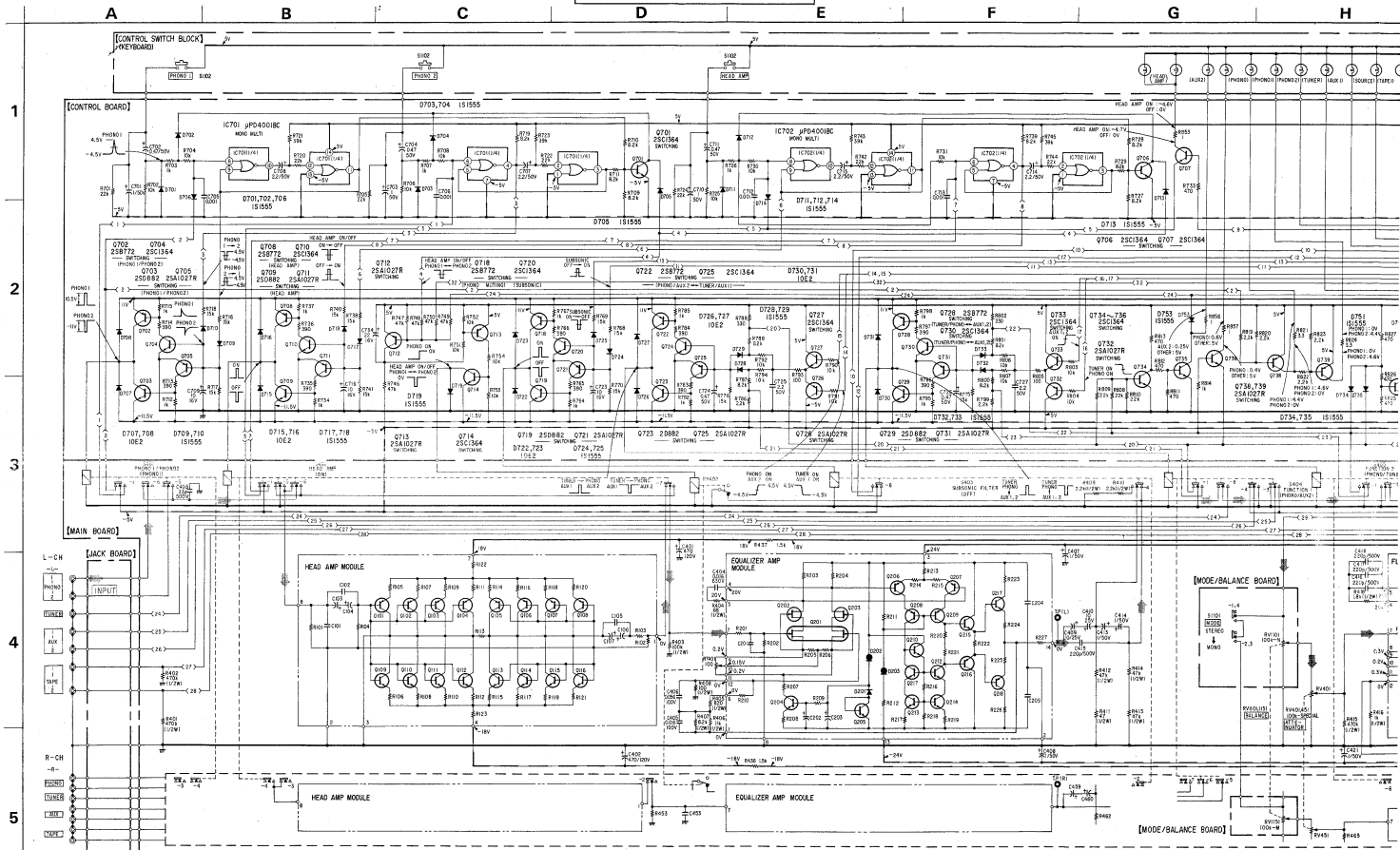
<b>μPC78M18H</b> <b>μPC7805H</b>  COMMON	<b>2SA1138</b> <b>2SC2876</b>  E C B	<b>10VG1.1</b>  cathode anode
<b>μPC7918H</b> <b>μPC7905H</b>  COMMON IN OUT	<b>2SB772</b> <b>2SD760</b> <b>2SD882</b>  letter side E C B	<b>PB102F</b>  1 2 3 4
<b>μPD4001BC</b>  1 2 3 4 5 6 7 8 (Top view)	<b>2SC1364</b>  E C B	<b>SLP-114A</b>  cathode anode
<b>NJM4558DFA</b> <b>NE5532P</b> <b>NE5534P</b>  1 2 3 4 5 6 7 8 (Top view)	<b>1S1555</b> <b>10E2</b> <b>EQA01-12R</b> <b>HZ30-2L</b> <b>EQB01-07</b>  cathode anode	<b>MV203V</b>  cathode anode
<b>2SA1027R</b>  E C B	 cathode anode	



**N**



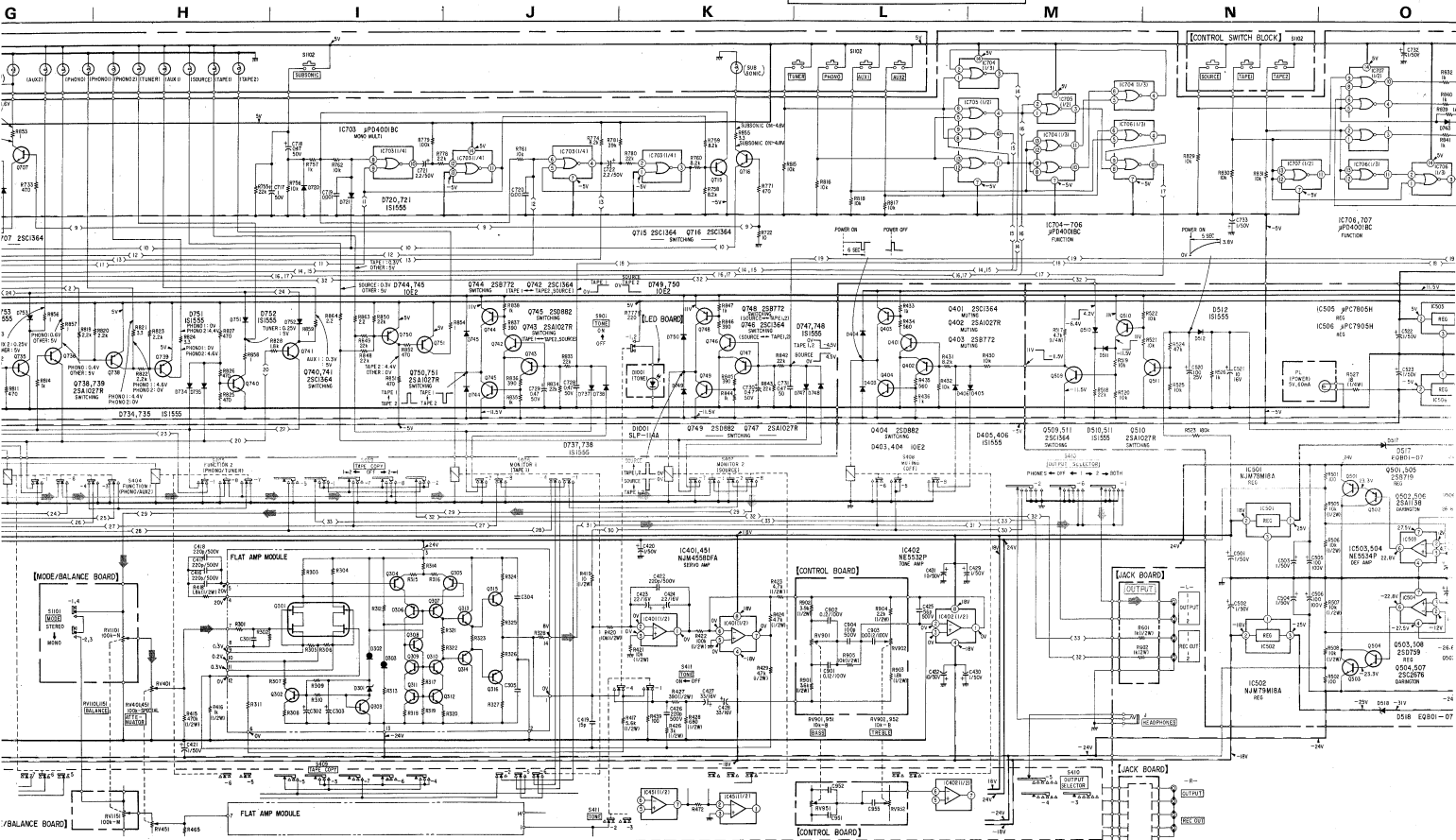




Note: The components identified by shading and mark  $\Delta$  are critical for safety. Replace only with part number specified.

- Components for right channel have same values as for left channel. Reference numbers are coded from 50





Components identified by shading and mark critical for safety. Replace only with better specified.

or right channel have same values as for left channel numbers are coded from 50

- All resistors are in ohms,  $\frac{1}{2}$ W unless otherwise noted.  $k\Omega$  : 1000  $\Omega$ ,  $M\Omega$  : 1000  $k\Omega$
- All capacitors are in  $\mu$ F unless otherwise noted.  $pF$  :  $\mu$ F 50WV or less are not indicated except for electrolytics and tantalums.

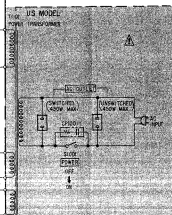
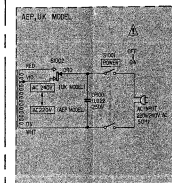
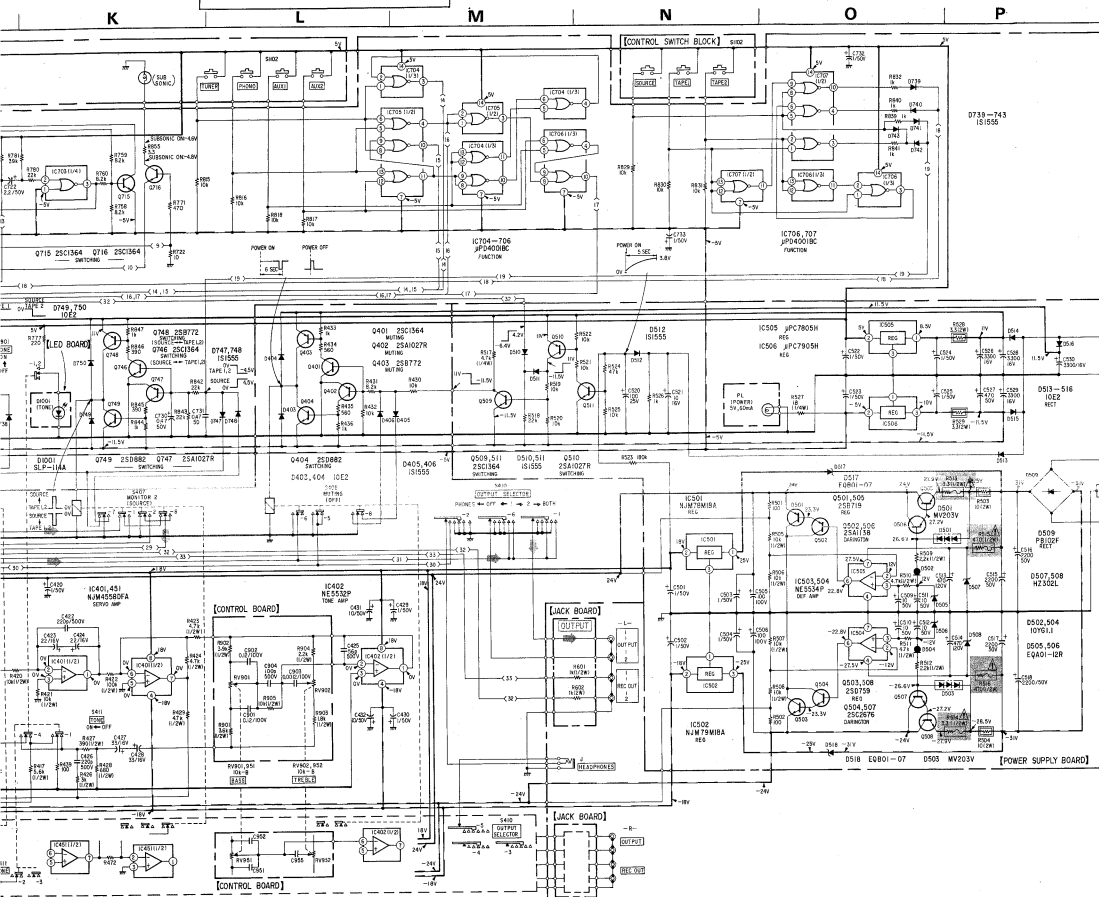
-13-

- : nonflammable resistor.
- : fusible resistor.
- : B- bus.
- : B- bus.
- : Voltages are dc with respect to ground unless otherwise noted.

-14-

- Readings are VOM (50k $\Omega$ ).
- Voltage variation tolerance

Note: Voltage



## Switch

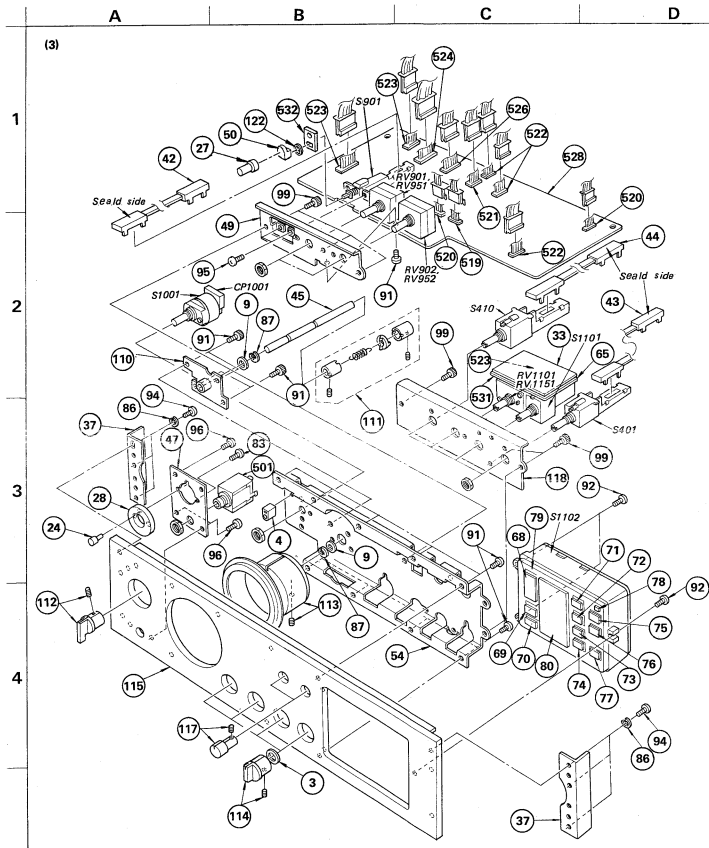
Ref. No.	Switch	Position
S401	PHONO 1 2	PHONO 1
S402	HEAD AMP	ON
S403	SUBSONIC	OFF
S404	FUNCTION 1	PHONO/AUX a
S405	FUNCTION 2	PHONO/TUNER
S406	MONITOR 1	SOURCE/TAPE 1
S407	MONITOR 2	SOURCE
S408	MUTING	OFF
S409	TAPE COPY	OFF
S410	OUTPUT SELECTOR	1
S411	TONE	OFF
S901	TONE	OFF
S1001	POWER	OFF
S1101	MODE	STEREO
S1102	KEYBOARD	OFF

- : nonflammable resistor.
- : fusible resistor.
- : panel designation.
- : signal path.
- : adjustment for repair.
- : B+ bus.
- : B- bus.
- Voltages are dc with respect to ground unless otherwise noted.

- Readings are taken under no-signal conditions with a VOM (50k $\Omega$ /V).
- Voltage variations may be noted due to normal production tolerances.

Note: Voltages are measured with a VOM (50k $\Omega$ /V).

-15-



## GENERAL SECTION

No.	Part No.	Description
1	2-259-121-01	SCREW, TR, 3X6
2	2-259-121-11	SCREW, TR, 3X8
3	3-533-938-00	CLOTH
4	3-534-276-11	HOLDER, LAMP
5	3-546-897-00	SHEET, INSULATING
6	3-701-030-01	(US,UK)...LABEL, SERIAL NUMBER
7	3-701-690-00	(UK)...LABEL, MADE IN JAPAN
8	3-701-429-21	SCREW, #8 3X5, PAWL
9	3-701-444-11	WASHER, 6
10	3-701-444-21	WASHER, 6
11	3-701-505-00	SET SCREW, DOUBLE POINT 3X3
12	3-701-506-01	SET SCREW, DOUBLE POINT 3X4
13	3-701-510-00	SET SCREW, DOUBLE POINT 4X4
14	3-703-043-00	(UK)...LABEL, MAIN CAUTION
15	3-703-108-21	SCREW #8V 3X6, S TIGHT
16	3-703-112-00	(US)...GUARD, PLUG
17	3-703-114-00	(US)...LABEL, MAIN CAUTION
18	4-337-218-21	(AEP,UK)...LABEL, VOLTAGE INDICATION
19	4-337-219-31	(AEP,UK)...LABEL, INDICATION, VOLTAGE 240V
20	4-801-028-00	WASHER, TERMINAL
21	4-809-246-00	(US)...LABEL, AC 120V 60Hz
22	4-835-639-00	PLATE, GROUND
23	4-889-789-00	PLATE, POWER CORB
24	4-852-92-00	LENS, POWER LAMP
25	4-854-715-00	TERMINAL (A)
26	4-854-716-00	TERMINAL (B)
27	4-854-738-11	CAP, KNOB
28	4-870-204-00	ORNAMENT, SWITCH (B)
29	4-870-210-00	SUPPORT, PL BUSHING
30	4-870-210-00	PING, PANEL RETAINER
31	4-870-272-00	HEAT SINK
32	4-870-273-00	HEAT SINK (E)
33	4-870-274-00	INSULATOR (B)
34	4-876-607-00	COLLAR (E), PLATE, JACK
35	4-876-628-01	ORNAMENT, JACK
36	4-876-628-11	ORNAMENT, JACK
37	4-879-905-00	ANGLE (A), FITTING, PANEL
38	4-879-906-00	ANGLE, PANEL, REAR
39	4-879-919-00	ANGLE, GUARD
40	4-879-926-00	(US)...BUSHING, POWER CORB
41	4-882-102-00	BRACKET (B), CONTROL
42	4-882-103-00	WIRE (TONE), FLEX
43	4-882-104-00	WIRE (COPY), FLEX
44	4-882-105-00	WIRE (COPY), FLEX
45	4-882-106-00	SHAFT, CONTROL JOINT
46	4-882-108-00	
47	4-882-109-00	
48	4-882-110-00	
49	4-882-111-00	
50	4-882-112-00	
51	4-882-113-00	
52	4-882-115-00	
53	4-882-116-00	
54	4-882-117-00	
55	4-882-118-00	
56	4-882-119-00	
57	4-882-120-00	
58	4-882-122-00	
59	4-882-122-00	
60	4-882-123-00	
61	4-882-124-00	
62	4-882-126-00	
63	4-882-127-00	
64	4-882-128-00	
65	4-882-130-00	
66	4-882-135-00	
67	4-882-137-00	
68	4-882-138-00	
69	4-882-139-00	
70	4-882-140-00	
71	4-882-141-00	
72	4-882-142-00	
73	4-882-143-00	
74	4-882-144-00	
75	4-882-145-00	
76	4-882-146-00	
77	4-882-147-00	
78	4-882-148-00	
79	4-882-149-00	
80	4-882-150-00	
81	4-882-151-00	
82	7-621-759-00	
83	7-621-775-00	
84	7-621-788-00	
85	7-621-788-00	
86	7-621-788-00	
87	7-621-788-00	
88	7-621-788-00	
89	7-621-788-00	
90	7-621-788-00	

## GENERAL SECTION

No.	Part No.	Description
46	4-882-108-00	
47	4-882-109-00	
48	4-882-110-00	
49	4-882-111-00	
50	4-882-112-00	
51	4-882-113-00	
52	4-882-115-00	
53	4-882-116-00	
54	4-882-117-00	
55	4-882-118-00	
56	4-882-119-00	
57	4-882-120-00	
58	4-882-122-00	
59	4-882-122-00	
60	4-882-123-00	
61	4-882-124-00	
62	4-882-126-00	
63	4-882-127-00	
64	4-882-128-00	
65	4-882-130-00	
66	4-882-135-00	
67	4-882-137-00	
68	4-882-138-00	
69	4-882-139-00	
70	4-882-140-00	
71	4-882-141-00	
72	4-882-142-00	
73	4-882-143-00	
74	4-882-144-00	
75	4-882-145-00	
76	4-882-146-00	
77	4-882-147-00	
78	4-882-148-00	
79	4-882-149-00	
80	4-882-150-00	
81	4-882-151-00	
82	7-621-759-00	
83	7-621-775-00	
84	7-621-788-00	
85	7-621-788-00	
86	7-621-788-00	
87	7-621-788-00	
88	7-621-788-00	
89	7-621-788-00	
90	7-621-788-00	

## NOTE:

- Items with no part number and no description are not stocked because they are seldom required for routine service.
- Items marked "▲" are not stocked since they are seldom required for routine service. Some delay should be anticipated when ordering these items.
- Due to standardization, parts with part numbers (1-222-222-KX or 2-222-222-K) may be different from those used in the set.

## CAPACITORS:

- All capacitors are in  $\mu\text{F}$ . Common capacitors are omitted. Refer to the following lists for their part numbers: MF:  $\mu\text{F}$ , PF:  $\mu\text{F}$ .

## RESISTORS

- All resistors are in ohms. Common 1/4W, 1/8W and 1/16W carbon resistor are omitted. Refer to the following lists for their part numbers.

- F: nonflammable

## COILS

- MW: mH, UH:  $\mu\text{H}$

D

## GENERAL SECTION

No.	Part No.	Description
1	2-259-121-01	SCREW, TR, 3X6
2	2-259-121-11	SCREW, TR, 3X8
3	3-533-920-00	CLOTH
4	3-534-276-11	HOLDER, LAMP
5	4-842-897-00	SHEET, INSULATING
6	3-701-030-01	(US,UK)...LABEL, SERIAL NUMBER
7	3-701-690-00	(UK)...LABEL, MADE IN JAPAN
8	3-701-429-21	SCREW, #6 3X5, PAML
9	3-701-444-11	WASHER, 6
10	3-701-444-21	WASHER, 6
11	3-701-500-00	SET SCREW, DOUBLE POINT 3X3
12	3-701-506-01	SET SCREW, DOUBLE POINT 3X4
13	3-701-510-00	SET SCREW, DOUBLE POINT 4X4
14	3-703-043-00	(UK)...LABEL, MAIN CAUTION
15	3-703-106-21	SCREW #6V 3X6, S TIGHT
16	3-703-112-00	(US)...GUARD, PLUG
17	3-703-114-00	(US)...LABEL, MAIN CAUTION
18	4-337-218-21	(AEF,UK)...LABEL, VOLTAGE INDICATION
19	4-337-218-31	(AEF,UK)...LABEL, INDICATION, VOLTAGE 240V
20	4-801-028-00	WASHER, TERMINAL
21	4-809-246-00	(US)...LABEL, AC 120V 60Hz
22	4-835-639-00	PLATE, GROUND
23	4-858-786-00	LED, RED, 5mm, 20mA, POWER CORN
24	4-858-925-00	LENS, POWER LAMP
25	4-854-715-00	TERMINAL (A)
26	4-854-716-00	TERMINAL (B)
27	4-854-738-11	CAP, KNOB
28	4-870-204-00	ORNAMENT, SWITCH (B)
29	4-870-205-00	SUPPORT, P. BOARD
30	4-870-210-00	RING, PANEL RETAINER
31	4-870-272-00	HEAT SINK
32	4-870-273-00	HEAT SINK (E)
33	4-870-274-00	INSULATOR (B)
34	4-876-607-00	COLLAR (E), PLATE, JACK
35	4-876-628-01	ORNAMENT, JACK
36	4-876-628-11	ORNAMENT, JACK
37	4-879-905-00	ANGLE (A), FITTING, PANEL
38	4-879-906-00	ANGLE, PANEL, REAR
39	4-879-919-00	ANGLE, GUARD
40	4-879-936-00	(US)...BUSING, POWER CORN
41	4-882-102-00	BRACKET (B), CONTROL
42	4-882-103-00	WIRE (TONE), FLEX
43	4-882-104-00	WIRE (COPY), FLEX
44	4-882-105-00	WIRE (OUT), FLEX
45	4-882-106-00	SHAFT, CONTROL JOINT

## NOTE:

- Items with no part number and no description are not stocked because they are seldom required for routine service.
- Items marked \* are not stocked since they are seldom required for routine service. Some delay should be anticipated when ordering these items.
- Due to standardization, parts with part numbers (0-000-000-XX or 0-000-000-X) may be different from those used in the set.

## CAPACITORS:

- All capacitors are in  $\mu$ F. Common capacitors are omitted. Refer to the following lists for their part numbers.
- M $\mu$ F, P $\mu$ F.

## RESISTORS

- All resistors are in ohms. Common 1/4W, 1/8W and 1/16W carbon resistors are omitted. Refer to the following lists for their part numbers.

F : nonflammable

## COILS

MMH : mH, UH :  $\mu$ H

## GENERAL SECTION

No.	Part No.	Description
46	4-882-108-00	SUPPORT (D), PC BOARD
47	4-882-109-00	BRACKET, POWER ORNAMENT
48	4-882-110-00	SPACER, TERMINAL
49	4-882-111-00	BRACKET (B), SWITCH
50	4-882-112-00	LENS, KNOB
51	4-882-113-00	BAR (B), REINFORCEMENT
52	4-882-115-00	REINFORCEMENT, JACK
53	4-882-116-00	HOLDER, TRANSFORMER
54	4-882-117-00	BRACKET, CONTROL
55	4-882-118-00	PLATE (W), SIDE
56	4-882-119-00	PLATE (RIGHT), SIDE
57	4-882-120-00	PLATE (LEFT), SIDE
58	4-882-122-11	(US)...PANEL (E), REAR
59	4-882-122-22	(AEF,UK)...PANEL (E), REAR
60	4-882-123-00	PANEL, UPPER
61	4-882-124-00	PLATE (E), BOTTOM
62	4-882-126-00	(AEF)...LABEL, MODEL NUMBER
63	4-882-127-00	(UK)...LABEL, MODEL NUMBER
64	4-882-128-00	(US)...LABEL, MODEL NUMBER
65	4-882-130-00	BOARD, SHIELD
66	4-882-136-00	SUPPORT
67	4-882-137-00	PLATE, BASE, SUPPORT
68	4-882-138-00	BUTTON, KEYBOARD SWITCH (SOURCE)
69	4-882-139-00	BUTTON, KEYBOARD SWITCH (TAPE 1)
70	4-882-140-00	BUTTON, KEYBOARD SWITCH (TAPE 2)
71	4-882-141-00	BUTTON, KEYBOARD SWITCH (TUNER)
72	4-882-142-00	BUTTON, KEYBOARD SWITCH (PHONE)
73	4-882-143-00	BUTTON, KEYBOARD SWITCH (AUX 1)
74	4-882-144-00	BUTTON, KEYBOARD SWITCH (AUX 2)
75	4-882-145-00	BUTTON, KEYBOARD SWITCH (PHONE 1)
76	4-882-146-00	BUTTON, KEYBOARD SWITCH (PHONE 2)
77	4-882-147-00	BUTTON, KEYBOARD SWITCH (HEADAMP)
78	4-882-148-00	BUTTON, KEYBOARD SWITCH (SUBSONIC)
79	4-882-149-00	LABEL, SPECIFICATION
80	4-882-150-00	PLATE, SMOKE-GLASS
81	4-882-151-00	(AEF,UK)...BRACKET, SWITCH, SELECTION
82	7-621-759-40	*PSW, 2.6X6
83	7-621-775-10	SCREW #6 2.6X4
84	7-623-108-11	W 3, MIDDLE
85	7-623-108-21	W 3, LARGE
86	7-623-212-22	SW 5, TYPE 2
87	7-624-109-04	STOP RING 5.0, TYPE -E
88	7-626-308-41	SPRING-PIN 1.4X10
89	7-682-159-09	SCREW #4 3X5
90	7-682-247-09	SCREW #K 3X6

The components identified by shading and mark  $\Delta$  are critical for safety.

Replace only with part number specified.

## SEMICONDUCTORS

In each case, U :  $\mu$ , for example:  
 UA... : UA..., UPA... : UPA..., UPC... : UPC...,  
 UPD... : UPD...

## GENERAL SECTION

No.	Part No.	Description
91	7-682-547-09	SCREW #8 3X6
92	7-682-548-09	SCREW #8 3X8
93	7-682-550-09	SCREW #8 4X5
94	7-682-574-09	SCREW #8 5X8
95	7-682-647-09	SCREW #PS 3X6
96	7-682-647-09	SCREW #PS 3X6
97	7-682-664-09	SCREW #PS 4X14
98	7-682-950-09	SCREW #PSM 3X12
99	7-683-402-04	BOLT, HEXAGON SOCKET 3X5
100	7-683-421-04	BOLT, HEXAGON SOCKET 4X12
101	7-684-023-04	N 3, TYPE 2
102	7-685-647-29	(AEF,UK)...SCREW #BVP 3X10 TYPE2 SLIT
103	4-435-209-A	MOUNTED PCB, MAIN
104	4-438-105-A	MODULE (B), E-Q
105	4-437-157-A	MODULE (B), F-T
106	4-437-159-A	MOUNTED PCB, CONTROL
107	4-439-200-A	MOUNTED PCB, POWER
108	4-409-586-A	MODULE (B), H-A
109	X-4852-903-0	LEG ASSY
110	X-4854-702-0	BEARING ASSY (B), CONTROL
111	X-4854-708-0	JOINT (B) ASSY
112	X-4870-208-2	KNOB ASSY
113	X-4870-102-0	KNOB ASSY, CONTROL
114	X-4882-101-0	KNOB (A) ASSY, ROUND
115	X-4882-104-0	PANEL ASSY, FRONT
116	7-623-208-20	SW, TYPE2
117	X-4882-102-0	KNOB ASSY, TONE
118	4-882-114-00	BRACKET(A), SWITCH
119	7-625-750-00	(AEF,UK)...SCREW #HVH 3X5
120	7-682-961-09	SCREW, #FSW 3X14
121	7-683-108-21	WASHER, LARGE
122	7-688-004-01	WASHER

## NOTE:

- Items with no part number and no description are not stocked because they are seldom required for routine service.
- Items marked \* are not stocked since they are seldom required for routine service. Some delay should be anticipated when ordering these items.
- Due to standardization, parts with part numbers (0-000-000-XX or 0-000-000-X) may be different from those used in the set.

## CAPACITORS:

- All capacitors are in  $\mu$ F. Common capacitors are omitted. Refer to the following lists for their part numbers.
- M $\mu$ F, P $\mu$ F.

## RESISTORS

- All resistors are in ohms. Common 1/4W, 1/8W and 1/16W carbon resistors are omitted. Refer to the following lists for their part numbers.

F : nonflammable

## COILS

MMH : mH, UH :  $\mu$ H

## ACCESSORY &amp; PACKING MATERIAL

No.	Part No.	Description
151	1-506-113-00	SHORT PLUG
152	3-701-616-00	BAG, POLYETHYLENE
153	3-701-623-00	BAG, POLYETHYLENE
154	3-701-630-00	BAG, POLYETHYLENE
155	3-783-914-11	MANUAL, INSTRUCTION
156	3-795-421-10	MANUAL, TECHNICAL
157	4-879-136-00	PANEL, SIDE
158	4-882-132-00	SHEET, PROTECTION (SIDE PANEL)
159	4-882-133-00	BAG, PROTECTION
160	4-882-134-00	CUSHION (FRONT)
161	4-882-135-00	CUSHION (REAR)
162	4-882-131-00	CARTON
163	7-721-130-20	WRENCH, HEX KEY, 0.3mm
164	3-795-422-00	INSTRUCTION, SIDE PANEL

## SEMICONDUCTORS

In each case, U :  $\mu$ , for example:  
 UA... : UA..., UPA... : UPA..., UPC... : UPC...,  
 UPD... : UPD...

## GENERAL SECTION

No.	Part No.	Description
91	7-682-547-09	SCREW +B 3X6
92	7-682-548-09	SCREW +B 3X8
93	7-682-559-09	SCREW +B 4X5
94	7-682-574-09	SCREW +B 5X8
95	7-682-647-09	SCREW +PS 3X6
96	7-682-647-09	SCREW +PS 3X6
97	7-682-664-09	SCREW +PS 4X14
98	7-682-950-09	SCREW +PSW 3X12
99	7-683-402-04	BOLT, HEXAGON SOCKET 3X5
100	7-683-421-04	BOLT, HEXAGON SOCKET 4X12
101	7-684-003-04	N 3, TYPE 2
102	7-685-647-29	(AEP,UK)....SCREW +BTP 3X10 TYPE2 SLIT
103	A-4335-209-A	MOUNTED PCB, MAIN
104	A-4358-105-A	MODULE (B), E-Q
105	A-4375-157-A	MODULE (B), F-T
106	A-4375-159-A	MOUNTED PCB, CONTROL
107	A-4394-280-A	MOUNTED PCB, POWER
108	A-4409-586-A	MODULE (B), H-A
109	X-4052-903-0	LEG ASSY
110	X-4054-702-0	BEARING ASSY (B), CONTROL
111	X-4054-708-0	JOINT (B) ASSY
112	X-4070-208-2	KNOB ASSY
113	X-4079-102-0	KNOB ASSY, CONTROL
114	X-4082-101-0	KNOB (A) ASSY, ROUND
115	X-4082-104-0	PANEL ASSY, FRONT
116	7-623-208-22	SW3, TYPE2
117	X-4082-102-0	KNOB ASSY, TONE
118	4-682-114-00	BROCKET(A), SWITCH
119	7-682-700-00	(AEP, UK)....SCREW +HWIP 3X5
120	7-682-951-09	SCREW, +PSW 3X14
121	7-683-108-21	WASHER 3, LARGE
122	7-688-004-01	WASHER

## ACCESSORY &amp; PACKING MATERIAL

No.	Part No.	Description
151	1-566-113-00	SHORT PLUG
152	3-701-616-00	BAG, POLYETHYLENE
153	3-701-623-00	BAG, POLYETHYLENE
154	3-701-630-00	BAG, POLYETHYLENE
155	3-783-914-11	MANUAL, INSTRUCTION
156	3-799-421-10	MANUAL, TECHNICAL
157	4-879-136-00	PANEL, SIDE
158	4-882-132-00	SHEET, PROTECTION (SIDE PANEL)
159	4-882-133-00	BAG, PROTECTION
160	4-882-134-00	CUSHION (FRONT)
161	4-882-135-00	CUSHION (REAR)
162	4-882-131-00	CARTON
163	7-721-130-20	WRENCH, HEX KEY, 0.3mm
164	3-795-420-00	INSTRUCTION, SIDE PANEL

## ELECTRICAL PARTS

Ref.No.	Part No.	Description
501	1-507-507-00	JACK
502	1-507-567-00	JACK, PIN 1P
503	1-508-808-00	14MM BASE POST
504	1-508-809-00	BASE POST (14MM) 2P
505	1-508-810-00	14MM BASE POST
506	1-508-811-00	BASE POST (14MM) 4P
507	1-508-813-00	14MM BASE POST
508	1-508-814-00	14MM BASE POST
509	1-508-815-00	14MM BASE POST
510	1-508-821-00	14MM BASE POST
511	1-518-490-00	LAMP, PILOT
512	1-518-503-00	LAMP, PILOT
513	A-1326-499-23	(US)....OUTLET, F, AC
514	A-1335-149-11	WIRE (3.0MM)
515	A-1335-364-00	PIN, RAPPING
516	A-1355-701-00	(US)....CORD, POWER
517	A-1355-795-00	(AEP)....CORD, POWER
518	A-1356-095-00	(UK)....CORD, POWER
519	1-560-061-00	PIN, CONNECTOR 3P
520	1-560-062-00	PIN, CONNECTOR 4P
521	1-560-063-00	PIN, CONNECTOR 5P
522	1-560-064-00	PIN, CONNECTOR 6P
523	1-560-065-00	PIN, CONNECTOR 8P
524	1-560-066-00	PIN, CONNECTOR 10P
526	1-560-338-00	PIN, CONNECTOR 7P
527	1-607-192-00	PC BOARD, MAIN
528	1-607-196-00	PC BOARD, CONTROL
529	1-607-197-00	PC BOARD, POWER
530	1-607-198-00	PC BOARD, JACK
531	1-607-199-00	PC BOARD, MODE BALANCE
532	1-607-200-00	PC BOARD, LED
C101	1-107-310-00	MICA 220PF 5% 500V
C102	1-130-301-00	FILM 0.015MF 5% 100V
C103	1-131-395-00	TANTALUM 100MF 20% 3.15V
C104	1-131-395-00	TANTALUM 100MF 20% 3.15V
C105	1-107-310-00	MICA 220PF 5% 500V
C106	1-131-522-00	TANTALUM 10MF 20% 25V
C107	1-131-522-00	TANTALUM 10MF 20% 25V
C201	1-107-165-00	MICA 56PF 5% 500V
C202	1-123-330-00	ELECT 22MF 20% 10V
C203	1-123-330-00	ELECT 22MF 20% 10V
C204	1-107-310-00	MICA 220PF 5% 500V
C205	1-107-310-00	MICA 220PF 5% 500V
C301	1-107-309-00	MICA 100PF 5% 500V
C302	1-123-330-00	ELECT 22MF 20% 10V
C303	1-123-330-00	ELECT 22MF 20% 10V

## ELECTRICAL PARTS

Ref.No.	Part No.	Description
C304	1-107-310-00	MICA 220PF 5% 500V
C305	1-107-310-00	MICA 220PF 5% 500V
C401	1-123-624-00	ELECT 470MF 20% 120V
C402	1-123-624-00	ELECT 470MF 20% 120V
C403	1-107-317-00	MICA 33PF 5% 500V
C404	1-130-206-00	FILM 0.016MF 2% 630V
C405	1-130-720-00	FILM 0.016MF 1% 100V
C406	1-130-721-00	FILM 0.056MF 1% 100V
C407	1-131-450-00	TANTALUM 1MF 20% 35V
C408	1-131-450-00	TANTALUM 1MF 20% 35V
C409	1-131-522-00	TANTALUM 10MF 20% 25V
C410	1-131-522-00	TANTALUM 10MF 20% 25V
C411	1-131-450-00	TANTALUM 1MF 20% 35V
C412	1-131-450-00	TANTALUM 1MF 20% 35V
C413	1-107-310-00	MICA 220PF 5% 500V
C416	1-107-310-00	MICA 220PF 5% 500V
C417	1-107-310-00	MICA 220PF 5% 500V
C418	1-107-310-00	MICA 220PF 5% 500V
C419	1-107-206-00	MICA 15PF 5% 500V
C420	1-131-450-00	TANTALUM 1MF 20% 35V
C421	1-131-450-00	TANTALUM 1MF 20% 35V
C422	1-107-310-00	MICA 220PF 5% 500V
C423	1-131-520-00	TANTALUM 22MF 20% 16V
C424	1-131-520-00	TANTALUM 22MF 20% 16V
C425	1-107-165-00	MICA 56PF 5% 500V
C426	1-107-310-00	MICA 220PF 5% 500V
C427	1-123-318-00	ELECT 33MF 20% 10V
C428	1-123-318-00	ELECT 33MF 20% 10V
C429	1-131-450-00	TANTALUM 1MF 20% 35V
C430	1-131-450-00	TANTALUM 1MF 20% 35V
C451	1-123-624-00	ELECT 470MF 20% 120V
C453	1-107-317-00	MICA 33PF 5% 500V
C454	1-130-206-00	FILM 0.016MF 2% 630V
C455	1-130-720-00	FILM 0.016MF 1% 100V
C456	1-130-721-00	FILM 0.056MF 1% 100V
C457	1-131-450-00	TANTALUM 1MF 20% 35V
C458	1-131-450-00	TANTALUM 1MF 20% 35V
C459	1-131-522-00	TANTALUM 10MF 20% 25V
C460	1-131-522-00	TANTALUM 10MF 20% 25V
C463	1-131-450-00	TANTALUM 1MF 20% 35V
C464	1-131-450-00	TANTALUM 1MF 20% 35V
C465	1-107-310-00	MICA 220PF 5% 500V
C466	1-107-310-00	MICA 220PF 5% 500V
C467	1-107-310-00	MICA 220PF 5% 500V
C468	1-107-310-00	MICA 220PF 5% 500V

NOTE:

- Items with no part number and no description are not stocked because they are seldom required for routine service.
- Items marked "▲" are not stocked since they are seldom required for routine service. Some delay should be anticipated when ordering these items.
- Due to standardization, parts with part numbers (5-AAA-AAA-X) or 0-AAA-AAA-X) may be different from those used in the set.

## CAPACITORS:

All capacitors are in uF. Common capacitors are omitted. Refer to the following lists for their part numbers. MF: uF, PF: pF.

## RESISTORS

All resistors are in ohms. Common 1/4W, 1/8W and 1/16W carbon resistors are omitted. Refer to the following lists for their part numbers.

F: nonflammable

## COILS

MMH: mH, uH: uH

The components identified by shading and mark ▲ are critical for safety. Replace only with part number specified.

## SEMICONDUCTORS

In each case, U: u, for example: UA.... uA...., UPA.... uPA...., UPC.... uPC, UPD.... uPD....

## NOTE:

- Items with no part number and no description are not stocked because they are seldom required for routine service.
- Items marked "▲" are not stocked since they are seldom required for routine service. Some delay should be anticipated when ordering these items.
- Due to standardization, parts with part numbers (0-AAA-AAA-X) or 0-AAA-AAA-X) may be different from those used in the set.

## CAPACITORS:

All capacitors are in uF. Common capacitors are omitted. Refer to the following lists for their part numbers. MF: uF, PF: pF.

## RESISTORS

All resistors are in ohms. Common 1/4W, 1/8W and 1/16W carbon resistors are omitted. Refer to the following lists for their part numbers.

F: nonflammable

## COILS

MMH: mH, uH: uH

The components identified by shading and mark ▲ are critical for safety. Replace only with part number specified.

## SEMICONDUCTORS

In each case, U: u, for example: UA.... uA...., UPA.... uPA...., UPC.... uPC, UPD.... uPD....

## ELECTRICAL PARTS

Ref.No.	Part No.	Description			
C469	1-107-206-00	MICA	15PF	5K	500V
C470	1-131-450-00	TANTALUM	1MF	20K	35V
C471	1-131-450-00	TANTALUM	1MF	20K	35V
C472	1-107-310-00	MICA	220PF	5K	500V
C473	1-131-520-00	TANTALUM	22MF	20K	16V
C474	1-131-520-00	TANTALUM	22MF	20K	16V
C475	1-107-165-00	MICA	56PF	5K	500V
C476	1-107-310-00	MICA	220PF	5K	500V
C477	1-123-318-00	ELECT	33MF	20K	16V
C478	1-123-318-00	ELECT	33MF	20K	16V
C501	1-124-047-00	ELECT	1MF	20K	50V
C502	1-124-047-00	ELECT	1MF	20K	50V
C503	1-131-450-00	TANTALUM	1MF	20K	35V
C504	1-131-450-00	TANTALUM	1MF	20K	35V
C505	1-126-268-00	ELECT(BLOCK)	100MF	20K	100V
C506	1-126-268-00	ELECT(BLOCK)	100MF	20K	100V
C509	1-131-522-00	TANTALUM	10MF	20K	25V
C510	1-131-522-00	TANTALUM	10MF	20K	25V
C511	1-123-356-00	ELECT	10MF	20K	50V
C512	1-123-356-00	ELECT	10MF	20K	50V
C513	1-123-624-00	ELECT	470MF	20K	120V
C514	1-123-624-00	ELECT	470MF	20K	120V
C515	1-123-895-00	ELECT	2200MF	20K	50V
C516	1-123-895-00	ELECT	2200MF	20K	50V
C517	1-123-895-00	ELECT	2200MF	20K	50V
C518	1-123-895-00	ELECT	2200MF	20K	50V
C520	1-123-333-00	ELECT	100MF	20K	25V
C521	1-123-356-00	ELECT	10MF	20K	50V
C522	1-123-380-00	ELECT	1MF	20K	50V
C523	1-123-380-00	ELECT	1MF	20K	50V
C524	1-123-380-00	ELECT	1MF	20K	50V
C525	1-123-380-00	ELECT	1MF	20K	50V
C526	1-123-326-00	ELECT	3300MF	20K	16V
C527	1-123-390-00	ELECT	330MF	20K	100V
C528	1-123-326-00	ELECT	3300MF	20K	16V
C529	1-123-326-00	ELECT	3300MF	20K	16V
C530	1-123-326-00	ELECT	3300MF	20K	16V
C701	1-123-380-00	ELECT	1MF	20K	50V
C702	1-123-379-00	ELECT	0.47MF	20K	50V
C703	1-123-380-00	ELECT	1MF	20K	50V
C704	1-123-379-00	ELECT	0.47MF	20K	50V
C705	1-161-323-00	CERAMIC	0.001MF	10K	50V
C706	1-161-323-00	CERAMIC	0.001MF	10K	50V
C707	1-123-381-00	ELECT	2.2MF	20K	50V
C708	1-123-381-00	ELECT	2.2MF	20K	50V

## ELECTRICAL PARTS

Ref.No.	Part No.	Description			
C709	1-123-356-00	ELECT	10MF	20K	16V
C710	1-123-380-00	ELECT	1MF	20K	50V
C711	1-123-379-00	ELECT	0.47MF	20K	50V
C712	1-161-323-00	CERAMIC	0.001MF	10K	50V
C713	1-161-323-00	CERAMIC	0.001MF	10K	50V
C714	1-123-381-00	ELECT	2.2MF	20K	50V
C715	1-123-381-00	ELECT	2.2MF	20K	50V
C716	1-123-356-00	ELECT	10MF	20K	16V
C717	1-123-380-00	ELECT	1MF	20K	50V
C718	1-123-379-00	ELECT	0.47MF	20K	50V
C719	1-161-323-00	CERAMIC	0.001MF	10K	50V
C720	1-161-323-00	CERAMIC	0.001MF	10K	50V
C721	1-123-381-00	ELECT	2.2MF	20K	50V
C722	1-123-381-00	ELECT	2.2MF	20K	50V
C723	1-123-356-00	ELECT	10MF	20K	16V
C724	1-123-379-00	ELECT	0.47MF	20K	50V
C725	1-123-380-00	ELECT	2.2MF	20K	50V
C726	1-123-379-00	ELECT	0.47MF	20K	50V
C727	1-123-230-00	ELECT	2.2MF	20K	50V
C728	1-124-049-00	ELECT	0.47MF	20K	50V
C729	1-123-379-00	ELECT	0.47MF	20K	50V
C730	1-123-379-00	ELECT	0.47MF	20K	50V
C731	1-124-049-00	ELECT	0.47MF	20K	50V
C732	1-123-380-00	ELECT	1MF	20K	50V
C733	1-123-380-00	ELECT	1MF	20K	50V
C734	1-123-330-00	ELECT	22MF	20K	16V
C901	1-130-323-00	FILM	0.12MF	5K	100V
C902	1-130-323-00	FILM	0.12MF	5K	100V
C903	1-130-275-00	FILM	0.0012MF	5K	100V
C904	1-107-309-00	MICA	100PF	5K	500V
C951	1-130-323-00	FILM	0.12MF	5K	100V
C952	1-130-323-00	FILM	0.12MF	5K	100V
C953	1-130-275-00	FILM	0.0012MF	5K	100V
C954	1-107-309-00	MICA	100PF	5K	500V
C955	1-130-356-00	ELECT	10MF	20K	16V
C956	1-130-356-00	ELECT	10MF	20K	16V
C957	1-130-356-00	ELECT	10MF	20K	16V
C958	1-130-356-00	ELECT	10MF	20K	16V
C959	1-130-356-00	ELECT	10MF	20K	16V
C960	1-130-356-00	ELECT	10MF	20K	16V
C961	1-130-356-00	ELECT	10MF	20K	16V
C962	1-130-356-00	ELECT	10MF	20K	16V
C963	1-130-356-00	ELECT	10MF	20K	16V
C964	1-130-356-00	ELECT	10MF	20K	16V
C965	1-130-356-00	ELECT	10MF	20K	16V
C966	1-130-356-00	ELECT	10MF	20K	16V
C967	1-130-356-00	ELECT	10MF	20K	16V
C968	1-130-356-00	ELECT	10MF	20K	16V
C969	1-130-356-00	ELECT	10MF	20K	16V
C970	1-130-356-00	ELECT	10MF	20K	16V
C971	1-130-356-00	ELECT	10MF	20K	16V
C972	1-130-356-00	ELECT	10MF	20K	16V
C973	1-130-356-00	ELECT	10MF	20K	16V
C974	1-130-356-00	ELECT	10MF	20K	16V
C975	1-130-356-00	ELECT	10MF	20K	16V
C976	1-130-356-00	ELECT	10MF	20K	16V
C977	1-130-356-00	ELECT	10MF	20K	16V
C978	1-130-356-00	ELECT	10MF	20K	16V
C979	1-130-356-00	ELECT	10MF	20K	16V
C980	1-130-356-00	ELECT	10MF	20K	16V
C981	1-130-356-00	ELECT	10MF	20K	16V
C982	1-130-356-00	ELECT	10MF	20K	16V
C983	1-130-356-00	ELECT	10MF	20K	16V
C984	1-130-356-00	ELECT	10MF	20K	16V
C985	1-130-356-00	ELECT	10MF	20K	16V
C986	1-130-356-00	ELECT	10MF	20K	16V
C987	1-130-356-00	ELECT	10MF	20K	16V
C988	1-130-356-00	ELECT	10MF	20K	16V
C989	1-130-356-00	ELECT	10MF	20K	16V
C990	1-130-356-00	ELECT	10MF	20K	16V
C991	1-130-356-00	ELECT	10MF	20K	16V
C992	1-130-356-00	ELECT	10MF	20K	16V
C993	1-130-356-00	ELECT	10MF	20K	16V
C994	1-130-356-00	ELECT	10MF	20K	16V
C995	1-130-356-00	ELECT	10MF	20K	16V
C996	1-130-356-00	ELECT	10MF	20K	16V
C997	1-130-356-00	ELECT	10MF	20K	16V
C998	1-130-356-00	ELECT	10MF	20K	16V
C999	1-130-356-00	ELECT	10MF	20K	16V
C1000	1-130-356-00	ELECT	10MF	20K	16V

## ELECTRICAL PARTS

Ref.No.	Part No.	Description			
D504	8-719-201-11	DIODE 10VGL-1			
D505	8-719-836-12	DIODE EQ0A1-12R			
D506	8-719-936-12	DIODE EQ0A1-12R			
D507	8-719-913-02	DIODE H230-2L			
D508	8-719-913-02	DIODE H230-2L			
D509	8-719-211-02	DIODE PH102F			
D510	8-719-815-55	DIODE 151555			
D511	8-719-815-55	DIODE 151555			
D512	8-719-815-55	DIODE 151555			
D513	8-719-200-02	DIODE 10E2			
D514	8-719-200-02	DIODE 10E2			
D515	8-719-200-02	DIODE 10E2			
D516	8-719-200-02	DIODE 10E2			
D517	8-719-931-07	DIODE EQ0A1-07			
D518	8-719-931-07	DIODE EQ0A1-07			
D701	8-719-815-55	DIODE 151555			
D702	8-719-815-55	DIODE 151555			
D703	8-719-815-55	DIODE 151555			
D704	8-719-815-55	DIODE 151555			
D705	8-719-815-55	DIODE 151555			
D706	8-719-815-55	DIODE 151555			
D707	8-719-200-02	DIODE 10E2			
D708	8-719-200-02	DIODE 10E2			
D709	8-719-815-55	DIODE 151555			
D710	8-719-815-55	DIODE 151555			
D711	8-719-815-55	DIODE 151555			
D712	8-719-815-55	DIODE 151555			
D713	8-719-815-55	DIODE 151555			
D714	8-719-815-55	DIODE 151555			
D715	8-719-200-02	DIODE 10E2			
D716	8-719-200-02	DIODE 10E2			
D717	8-719-815-55	DIODE 151555			
D718	8-719-815-55	DIODE 151555			
D719	8-719-815-55	DIODE 151555			
D720	8-719-815-55	DIODE 151555			
D721	8-719-815-55	DIODE 151555			
D722	8-719-200-02	DIODE 10E2			
D723	8-719-200-02	DIODE 10E2			
D724	8-719-815-55	DIODE 151555			
D725	8-719-815-55	DIODE 151555			
D726	8-719-200-02	DIODE 10E2			
D727	8-719-200-02	DIODE 10E2			
D728	8-719-815-55	DIODE 151555			
D729	8-719-815-55	DIODE 151555			
D730	8-719-200-02	DIODE 10E2			

## ELECTRICAL PARTS

Ref.No.	Part No.	Description
D731	8-719-200-02	DIODE 10E2
D732	8-719-815-55	DIODE 151555
D733	8-719-815-55	DIODE 151555
D734	8-719-815-55	DIODE 151555
D735	8-719-815-55	DIODE 151555
D736	8-719-200-02	DIODE 10E2
D737	8-719-815-55	DIODE 151555
D738	8-719-815-55	DIODE 151555
D739	8-719-815-55	DIODE 151555
D740	8-719-815-55	DIODE 151555
D741	8-719-815-55	DIODE 151555
D742	8-719-815-55	DIODE 151555
D743	8-719-815-55	DIODE 151555
D744	8-719-200-02	DIODE 10E2
D745	8-719-200-02	DIODE 10E2
D746	8-719-200-02	DIODE 10E2
D747	8-719-815-55	DIODE 151555
D748	8-719-815-55	DIODE 151555
D749	8-719-200-02	DIODE 10E2
D750	8-719-200-02	DIODE 10E2
D751	8-719-815-55	DIODE 151555
D752	8-719-815-55	DIODE 151555
D753	8-719-815-55	DIODE 151555
D754	8-719-815-55	DIODE 151555
D755	8-719-815-55	DIODE 151555
D756	8-719-815-55	DIODE 151555
D757	8-719-815-55	DIODE 151555
D758	8-719-815-55	DIODE 151555
D759	8-719-815-55	DIODE 151555
D760	8-719-815-55	DIODE 151555
D761	8-719-815-55	DIODE 151555
D762	8-719-815-55	DIODE 151555
D763	8-719-815-55	DIODE 151555
D764	8-719-815-55	DIODE 151555
D765	8-719-815-55	DIODE 151555
D766	8-719-815-55	DIODE 151555
D767	8-719-815-55	DIODE 151555
D768	8-719-815-55	DIODE 151555
D769	8-719-815-55	DIODE 151555
D770	8-719-815-55	DIODE 151555
D771	8-719-815-55	DIODE 151555
D772	8-719-815-55	DIODE 151555
D773	8-719-815-55	DIODE 151555
D774	8-719-815-55	DIODE 151555
D775	8-719-815-55	DIODE 151555
D776	8-719-815-55	DIODE 151555
D777	8-719-815-55	DIODE 151555
D778	8-719-815-55	DIODE 151555
D779	8-719-815-55	DIODE 151555
D780	8-719-815-55	DIODE 151555
D781	8-719-815-55	DIODE 151555
D782	8-719-815-55	DIODE 151555
D783	8-719-815-55	DIODE 151555
D784	8-719-815-55	DIODE 151555
D785	8-719-815-55	DIODE 151555
D786	8-719-815-55	DIODE 151555
D787	8-719-815-55	DIODE 151555
D788	8-719-815-55	DIODE 151555
D789	8-719-815-55	DIODE 151555
D790	8-719-815-55	DIODE 151555
D791	8-719-815-55	DIODE 151555
D792	8-719-815-55	DIODE 151555
D793	8-719-815-55	DIODE 151555
D794	8-719-815-55	DIODE 151555
D795	8-719-815-55	DIODE 151555
D796	8-719-815-55	DIODE 151555
D797	8-719-815-55	DIODE 151555
D798	8-719-815-55	DIODE 151555
D799	8-719-815-55	DIODE 151555
D800	8-719-815-55	DIODE 151555
D801	8-719-815-55	DIODE 151555
D802	8-719-815-55	DIODE 151555
D803	8-719-815-55	DIODE 151555
D804	8-719-815-55	DIODE 151555
D805	8-719-815-55	DIODE 151555
D806	8-719-815-55	DIODE 151555
D807	8-719-815-55	DIODE 151555
D808	8-719-815-55	DIODE 151555
D809	8-719-815-55	DIODE 151555
D810	8-719-815-55	DIODE 151555
D811	8-719-815-55	DIODE 151555
D812	8-719-815-55	DIODE 151555
D813	8-719-815-55	DIODE 151555
D814	8-719-815-55	DIODE 151555
D815	8-719-815-55	DIODE 151555
D816	8-719-815-55	DIODE 151555
D817	8-719-815-55	DIODE 151555
D818	8-719-815-55	DIODE 151555
D819	8-719-815-55	DIODE 151555
D820	8-719-815-55	DIODE 151555
D821	8-719-815-55	DIODE 151555
D822	8-719-815-55	DIODE 151555
D823	8-719-815-55	DIODE 151555
D824	8-719-815-55	DIODE 151555
D825	8-719-815-55	DIODE 151555
D826	8-719-815-55	DIODE 151555
D827	8-719-815-55	DIODE 151555
D828	8-719-815-55	DIODE 151555
D829	8-719-815-55	DIODE 151555
D830	8-719-815-55	DIODE 151555
D831	8-719-815-55	DIODE 151555
D832	8-719-815-55	DIODE 151555
D833	8-719-815-55	DIODE 151555
D834	8-719-815-55	DIODE 151555
D835	8-719-815-55	DIODE 151555
D836	8-719-815-55	DIODE 151555
D837	8-719-815-55	DIODE 151555
D838	8-719-815-55	DIODE 151555
D839	8-719-815-55	DIODE 151555
D840	8-719-815-55	DIODE 151555
D841	8-719-815-55	DIODE 151555
D842	8-719-815-55	DIODE 151555
D843	8-719-815-55	DIODE 151555
D844	8-719-815-55	DIODE 151555
D845	8-719-815-55	DIODE 151555
D846	8-719-815-55	DIODE 151555
D847	8-719-815-55	DIODE 151555
D848	8-719-815-55	DIODE 151555
D849	8-719-815-55	DIODE 151555
D850	8-719-815-55	DIODE 151555
D851	8-719-815-55	DIODE 151555
D852	8-719-815-55	DIODE 151555
D853	8-719-815-55	DIODE 151555
D854	8-719-815-55	DIODE 151555
D855	8-719-815-55	DIODE 151555
D856	8-719-815-55	DIODE 151555
D857	8-719-815-55	DIODE 151555
D858	8-719-815-55	DIODE 151555
D859	8-719-815-55	DIODE 151555
D860	8-719-815-55	DIODE 151555
D861	8-719-815-55	DIODE 151555
D862	8-719-815-55	DIODE 151555
D863	8-719-815-55	DIODE 151555
D864	8-719-815-55	DIODE 151555
D865	8-719-815-55	DIODE 151555
D866	8-719-815-55	DIODE 151555
D867	8-719-815-55	DIODE 151555
D868	8-719-815-55	DIODE 151555
D869	8-719-815-55	DIODE 151555
D870	8-719-815-55	DIODE 151555
D871	8-719-815-55	DIODE 151555
D872	8-719-815-55	DIODE 151555
D873	8-719-815-55	DIODE 151555
D874	8-719-815-55	DIODE 151555
D875	8-719-815-55	DIODE 151555
D876	8-719-815-55	DIODE 151555
D877	8-719-815-55	DIODE 151555
D878	8-719-815-55	DIODE 151555
D879	8-719-815-55	DIODE 151555
D880	8-719-815-55	DIODE 151555
D881	8-719-815-55	DIODE 151555
D882	8-719-815-55	DIODE 151555
D883	8-719-815-55	DIODE 151555
D884	8-719-815-55	DIODE 151555
D885	8-719-815-55	DIODE 151555
D886	8-719-815-55	DIODE 151555
D887	8-719-815-55	DIODE 151555
D888	8-719-815-55	DIODE 151555
D889	8-719-815-55	DIODE 151555
D890	8-719-815-55	DIODE 151555
D891	8-719-815-55	DIODE 151555
D892	8-719-815-55	DIODE 151555
D893	8-719-815-55	DIODE 151555
D894	8-719-815-55	DIODE 151555
D895	8-719-815-55	DIODE 151555
D896	8-719-815-55	DIODE 151555
D897	8-719-815-55	DIODE 151555
D898	8-719-815-55	DIODE 151555
D899	8-719-815-55	DIODE 151555
D900	8-719-815-55	DIODE 151555
D901	8-719-815-55	DIODE 151555
D902	8-719-815-55	DIODE 151555
D903	8-719-815-55	DIODE 151555
D904	8-719-815-55	DIODE 151555
D905	8-719-815-55	DIODE 151555
D906	8-719-815-55	DIODE 151555
D907	8-719-815-55	DIODE 151555
D908	8-719-815-55	DIODE 151555
D909	8-719-815-55	DIODE 151555
D910	8-719-815-55	DIODE 151555
D911	8-719-815-55	DIODE 151555
D912	8-719-815-55	DIODE 151555
D913	8-719-815-55	DIODE 151555
D914	8-719-815-55	DIODE 151555
D915	8-719-815-55	DIODE 151555
D916	8-719-815-55	DIODE 151555
D917	8-719-815-55	DIODE 151555
D918	8-719-815-55	DIODE 151555
D919	8-719-815-55	DIODE 151555
D920	8-719-815-55	DIODE 151555
D921	8-719-815-55	DIODE 151555
D922	8-719-815-55	DIODE 151555
D923	8-719-815-55	DIODE 151555
D924	8-719-815-55	DIODE 151555
D925	8-719-815-55	DIODE 151555
D926	8-719-815-55	DIODE 151555
D927	8-719-815-55	DIODE 151555
D928	8-719-815-55	DIODE 151555
D929	8-719-815-55	DIODE 151555
D930	8-719-815-55	DIODE 151555
D931	8-719-815-55	DIODE 151555
D932	8-719-815-55	DIODE 151555
D933	8-719-815-55	DIODE 151555
D934	8-719-815-55	DIODE 151555
D935	8-719-815-55	DIODE 151555
D936	8-719-815-55	DIODE 151555
D937	8-719-815-55	DIODE 151555
D938	8-719-815-55	DIODE 151555
D939	8-719-815-55	DIODE 151555
D940	8-719-815-55	DIODE 151555
D941	8-719-815-55	DIODE 151555
D942	8-719-815-55	DIODE 151555
D943	8-719-815-55	DIODE 151555
D944	8-719-815-55	DIODE 151555
D945	8-719-815-55	DIODE 151555
D946	8-719-815-55	DIODE 151555
D947	8-719-815-55	DIODE 151555
D948	8-719-815-55	DIODE 151555
D949	8-719-815-55	DIODE 151555
D950	8-719-815-55	DIODE 151555
D951	8-719-815-55	DIODE 151555
D952	8-719-815-55	DIODE 151555
D953	8-719-815-55	DIODE 151555
D954	8-719-815-55	DIODE 151555
D955	8-719-815-55	DIODE 151555
D956	8-719-815-55	DIODE 151555
D957	8-719-815-55	DIODE 151555
D958	8-719-815-55	DIODE 151555
D959	8-719-815-55	DIODE 151555
D960	8-719-815-55	DIODE 151555
D961	8-719-815-55	DIODE 151555
D962	8-719-815-55	DIODE 151555
D963	8-719-815-55	DIODE 151555
D964	8-719-815-55	DIODE 151555
D965	8-719-815-55	DIODE 151555
D966	8-719-815-55	DIODE 151555
D967	8-719-815-55	DIODE 151555
D968	8-719-815-55	DIODE 151555
D969	8-719-815-55	DIODE 151555
D970	8-719-815-55	DIODE 151555
D971	8-719-815-55	DIODE 151555
D972	8-719-815-55	DIODE 151555
D973	8-719-815-55	DIODE 151555
D974	8-719-815-55	DIODE 151555
D975	8-719-815-55	DIODE 151555
D976	8-719-815-55	DIODE 151555
D977	8-719-815-55	DIODE 151555
D978	8-719-815-55	DIODE 151555
D979	8-719-815-55	DIODE 151555
D980	8-719-815-55	DIODE 151555
D981	8-719-815-55	DIODE 151555
D982	8-719-815-55	DIODE 151555
D983	8-719-815-55	DIODE 151555
D984	8-719-815-55	DIODE 151555
D985	8-719-815-55	DIODE 151555
D986	8-719-815-55	DIODE 151555
D987	8-719-815-55	DIODE 151555
D988	8-719-815-55	DIODE 151555
D989	8-719-815-55	DIODE 151555
D990	8-719-815-55	DIODE 151555
D991	8-719-815-55	DIODE 151555
D992	8-719-815-55	DIODE 151555
D993	8-719-815-55	DIODE 151555
D994	8-719-815-55	DIODE 151555
D995	8-719-815-55	DIODE 151555
D996	8-719-815-55	DIODE 151555
D997	8-719-815-55	DIODE 151555
D998	8-719-815-55	DIODE 151555
D999	8-719-815-55	DIODE 151555
D1000	8-719-815-55	DIODE 151555
D1001	8-719-815-55	DIODE 151555
D1002	8-719-815-55	DIODE 151555
D1003	8-719-815-55	DIODE 151555
D1004	8-719-815-55	DIODE 151555
D1005	8-719-815-55	DIODE 151555
D1006	8-719-815-55	DIODE 151555
D1007	8-719-815-55	DIODE 151555
D1008	8-719-815-55	DIODE 151555
D1009	8-719-815-55	DIODE 151555
D1010	8-719-815-55	DIODE 151555
D1011	8-719-815-55	DIODE 151555
D1012	8-719-815-55	DIODE 151555
D1013	8-719-815-55	DIODE 151555
D1014	8-719-815-55	DIODE 151555
D1015	8-719-815-55	DIODE 151555
D1016	8-719-815-55	DIODE 151555
D1017	8-719-815-55	DIODE 151555
D1018	8	

# TA-E901 TA-E901

## ELECTRICAL PARTS

Ref.No.	Part No.	Description
Q404	8-729-188-23	TRANSISTOR 2SD0882
Q501	8-729-372-02	TRANSISTOR 2SB720
Q502	8-729-113-02	TRANSISTOR 2SA1138
Q503	8-729-376-02	TRANSISTOR 2SD9760
Q504	8-729-167-02	TRANSISTOR 2SC2676
Q505	8-729-372-02	TRANSISTOR 2SB720
Q506	8-729-113-02	TRANSISTOR 2SA1138
Q507	8-729-167-02	TRANSISTOR 2SC2676
Q508	8-729-376-02	TRANSISTOR 2SD9760
Q509	8-729-663-47	TRANSISTOR 2SC1364
Q510	8-729-612-77	TRANSISTOR 2SA1027R
Q511	8-729-663-47	TRANSISTOR 2SC1364
Q701	8-729-663-47	TRANSISTOR 2SC1364
Q702	8-729-177-23	TRANSISTOR 2SB772
Q703	8-729-188-23	TRANSISTOR 2SD0882
Q704	8-729-663-47	TRANSISTOR 2SC1364
Q705	8-729-612-77	TRANSISTOR 2SA1027R
Q706	8-729-663-47	TRANSISTOR 2SC1364
Q707	8-729-663-47	TRANSISTOR 2SC1364
Q708	8-729-177-23	TRANSISTOR 2SB772
Q709	8-729-188-23	TRANSISTOR 2SD0882
Q710	8-729-663-47	TRANSISTOR 2SC1364
Q711	8-729-612-77	TRANSISTOR 2SA1027R
Q712	8-729-612-77	TRANSISTOR 2SA1027R
Q713	8-729-612-77	TRANSISTOR 2SA1027R
Q714	8-729-663-47	TRANSISTOR 2SC1364
Q715	8-729-663-47	TRANSISTOR 2SC1364
Q716	8-729-663-47	TRANSISTOR 2SC1364
Q717	8-729-612-77	TRANSISTOR 2SA1027R
Q718	8-729-177-23	TRANSISTOR 2SB772
Q719	8-729-188-23	TRANSISTOR 2SD0882
Q720	8-729-663-47	TRANSISTOR 2SC1364
Q721	8-729-612-77	TRANSISTOR 2SA1027R
Q722	8-729-177-23	TRANSISTOR 2SB772
Q723	8-729-188-23	TRANSISTOR 2SD0882
Q724	8-729-663-47	TRANSISTOR 2SC1364
Q725	8-729-612-77	TRANSISTOR 2SA1027R
Q726	8-729-612-77	TRANSISTOR 2SA1027R
Q727	8-729-663-47	TRANSISTOR 2SC1364
Q728	8-729-177-23	TRANSISTOR 2SB772
Q729	8-729-188-23	TRANSISTOR 2SD0882
Q730	8-729-663-47	TRANSISTOR 2SC1364
Q731	8-729-612-77	TRANSISTOR 2SA1027R
Q732	8-729-612-77	TRANSISTOR 2SA1027R
Q733	8-729-663-47	TRANSISTOR 2SC1364

## ELECTRICAL PARTS

Ref.No.	Part No.	Description
Q734	8-729-663-47	TRANSISTOR 2SC1364
Q735	8-729-663-47	TRANSISTOR 2SC1364
Q736	8-729-663-47	TRANSISTOR 2SC1364
Q737	8-729-612-77	TRANSISTOR 2SA1027R
Q738	8-729-612-77	TRANSISTOR 2SA1027R
Q739	8-729-612-77	TRANSISTOR 2SA1027R
Q740	8-729-663-47	TRANSISTOR 2SC1364
Q741	8-729-663-47	TRANSISTOR 2SC1364
Q742	8-729-663-47	TRANSISTOR 2SC1364
Q743	8-729-612-77	TRANSISTOR 2SA1027R
Q745	8-729-188-23	TRANSISTOR 2SD0882
Q746	8-729-663-47	TRANSISTOR 2SC1364
Q747	8-729-612-77	TRANSISTOR 2SA1027R
Q748	8-729-177-23	TRANSISTOR 2SB772
Q749	8-729-188-23	TRANSISTOR 2SD0882
Q750	8-729-612-77	TRANSISTOR 2SA1027R
Q751	8-729-612-77	TRANSISTOR 2SA1027R
R101	1-214-864-00	METAL 1K 1% 1/2W
R102	1-214-897-00	METAL 22K 1% 1/2W
R103	1-214-816-00	METAL 10 1% 1/2W
R104	1-214-856-00	METAL 470 1% 1/2W
R105	1-214-816-00	METAL 10 1% 1/2W
R106	1-214-816-00	METAL 10 1% 1/2W
R107	1-214-816-00	METAL 10 1% 1/2W
R108	1-214-816-00	METAL 10 1% 1/2W
R109	1-214-816-00	METAL 10 1% 1/2W
R110	1-214-816-00	METAL 10 1% 1/2W
R111	1-214-816-00	METAL 10 1% 1/2W
R112	1-214-816-00	METAL 10 1% 1/2W
R113	1-214-848-00	METAL 220 1% 1/2W
R114	1-214-816-00	METAL 10 1% 1/2W
R115	1-214-816-00	METAL 10 1% 1/2W
R116	1-214-816-00	METAL 10 1% 1/2W
R117	1-214-816-00	METAL 10 1% 1/2W
R118	1-214-816-00	METAL 10 1% 1/2W
R119	1-214-816-00	METAL 10 1% 1/2W
R120	1-214-816-00	METAL 10 1% 1/2W
R121	1-214-816-00	METAL 10 1% 1/2W
R122	1-214-864-00	METAL 1K 1% 1/2W
R123	1-214-864-00	METAL 1K 1% 1/2W
R201	1-214-816-00	METAL 10 1% 1/2W
R202	1-214-913-00	METAL 100K 1% 1/2W
R203	1-214-854-00	METAL 390 1% 1/2W
R204	1-214-854-00	METAL 390 1% 1/2W

## ELECTRICAL PARTS

Ref.No.	Part No.	Description
R205	1-214-822-00	METAL 18 1% 1/2W
R206	1-214-822-00	METAL 18 1% 1/2W
R207	1-214-840-00	METAL 100 1% 1/2W
R208	1-214-855-00	METAL 430 1% 1/2W
R209	1-214-840-00	METAL 100 1% 1/2W
R210	1-214-907-00	METAL 56K 1% 1/2W
R211	1-214-880-00	METAL 4.7K 1% 1/2W
R212	1-214-880-00	METAL 10K 1% 1/2W
R213	1-214-874-00	METAL 2.7K 1% 1/2W
R214	1-214-864-00	METAL 1K 1% 1/2W
R215	1-214-864-00	METAL 1K 1% 1/2W
R216	1-214-892-00	METAL 15K 1% 1/2W
R217	1-214-874-00	METAL 2.7K 1% 1/2W
R218	1-214-892-00	METAL 15K 1% 1/2W
R219	1-214-874-00	METAL 2.7K 1% 1/2W
R220	1-214-880-00	METAL 4.7K 1% 1/2W
R221	1-214-880-00	METAL 4.7K 1% 1/2W
R222	1-214-886-00	METAL 8.2K 1% 1/2W
R223	1-214-822-00	METAL 18 1% 1/2W
R224	1-214-822-00	METAL 18 1% 1/2W
R225	1-214-822-00	METAL 18 1% 1/2W
R226	1-214-822-00	METAL 18 1% 1/2W
R227	1-214-840-00	METAL 100 1% 1/2W
R301	1-214-840-00	METAL 100 1% 1/2W
R302	1-214-913-00	METAL 100K 1% 1/2W
R303	1-214-874-00	METAL 2.7K 1% 1/2W
R304	1-214-874-00	METAL 2.7K 1% 1/2W
R305	1-214-840-00	METAL 100 1% 1/2W
R306	1-214-840-00	METAL 100 1% 1/2W
R307	1-214-862-00	METAL 820 1% 1/2W
R308	1-214-868-00	METAL 1.5K 1% 1/2W
R309	1-214-888-00	METAL 10K 1% 1/2W
R310	1-214-888-00	METAL 10K 1% 1/2W
R311	1-214-874-00	METAL 2K 1% 1/2W
R312	1-214-880-00	METAL 4.7K 1% 1/2W
R313	1-214-888-00	METAL 10K 1% 1/2W
R314	1-214-874-00	METAL 2.7K 1% 1/2W
R315	1-214-864-00	METAL 1K 1% 1/2W
R316	1-214-864-00	METAL 1K 1% 1/2W
R317	1-214-892-00	METAL 15K 1% 1/2W
R318	1-214-874-00	METAL 2.7K 1% 1/2W
R319	1-214-892-00	METAL 15K 1% 1/2W
R320	1-214-874-00	METAL 2.7K 1% 1/2W
R321	1-214-880-00	METAL 4.7K 1% 1/2W
R322	1-214-880-00	METAL 4.7K 1% 1/2W

## ELECTRICAL PARTS

Ref.No.	Part No.	Description
R323	1-214-886-00	METAL 8.2K 1% 1/2W
R324	1-214-822-00	METAL 18 1% 1/2W
R325	1-214-822-00	METAL 18 1% 1/2W
R326	1-214-822-00	METAL 18 1% 1/2W
R327	1-214-822-00	METAL 18 1% 1/2W
R328	1-214-840-00	METAL 100 1% 1/2W
R401	1-214-929-00	METAL 470K 1% 1/2W
R402	1-214-929-00	METAL 470K 1% 1/2W
R403	1-214-913-00	METAL 100K 1% 1/2W
R404	1-214-836-00	METAL 68 1% 1/2W
R405	1-214-862-00	METAL 820 1% 1/2W
R406	1-214-889-00	METAL 11K 1% 1/2W
R407	1-214-886-00	METAL 8.2K 1% 1/2W
R408	1-214-940-00	METAL 100 1% 1/2W
R409	1-214-872-00	METAL 2.2K 1% 1/2W
R410	1-214-872-00	METAL 2.2K 1% 1/2W
R411	1-214-905-00	METAL 47K 1% 1/2W
R412	1-214-905-00	METAL 47K 1% 1/2W
R413	1-214-905-00	METAL 47K 1% 1/2W
R414	1-214-905-00	METAL 47K 1% 1/2W
R415	1-214-929-00	METAL 470K 1% 1/2W
R416	1-214-864-00	METAL 1K 1% 1/2W
R417	1-214-882-00	METAL 5.6K 1% 1/2W
R418	1-214-870-00	METAL 1.8K 1% 1/2W
R419	1-214-816-00	METAL 10 1% 1/2W
R420	1-214-888-00	METAL 10K 1% 1/2W
R421	1-214-888-00	METAL 10K 1% 1/2W
R422	1-214-913-00	METAL 100K 1% 1/2W
R423	1-214-880-00	METAL 4.7K 1% 1/2W
R424	1-214-880-00	METAL 4.7K 1% 1/2W
R426	1-214-875-00	METAL 3K 1% 1/2W
R427	1-214-864-00	METAL 390 1% 1/2W
R428	1-214-866-00	METAL 680 1% 1/2W
R429	1-214-880-00	METAL 4.7K 1% 1/2W
R430	1-214-136-00	METAL 1.5K 1% 1/4W
R431	1-214-136-00	METAL 1.5K 1% 1/4W
R438	1-214-108-00	METAL 100 1% 1/4W
R439	1-214-929-00	METAL 470K 1% 1/2W
R451	1-214-929-00	METAL 470K 1% 1/2W
R453	1-214-913-00	METAL 100K 1% 1/2W
R454	1-214-836-00	METAL 68 1% 1/2W
R455	1-214-862-00	METAL 820 1% 1/2W
R456	1-214-889-00	METAL 11K 1% 1/2W
R457	1-214-886-00	METAL 8.2K 1% 1/2W
R458	1-214-840-00	METAL 100 1% 1/2W

## NOTE:

- Items with no part number and no description are not stocked because they are seldom required for routine service.
- Items marked with \* are not stocked since they are seldom required for routine service. Some delay should be anticipated when ordering these items.
- Due to standardization, parts with part numbers (6-AAA-AAA-XX or 6-AAA-AAA-X) may be different from those used in the set.

## CAPACITORS:

All capacitors are in  $\mu\text{F}$ . Common capacitors are omitted. Refer to the following lists for their part numbers.  
MF:  $\mu\text{F}$ , PF:  $\mu\text{F}$ .

## RESISTORS

All resistors are in ohms. Common 1/4W, 1/8W and 1/16W carbon resistors are omitted. Refer to the following lists for their part numbers.

F : nonflammable

## COILS

MH : mH, UH :  $\mu\text{H}$

The components identified by shading and mark  $\Delta$  are critical for safety.  
Replace only with part number specified.

## SEMICONDUCTORS

In each case, U :  $\mu$ , for example:  
UA... :  $\mu\text{A}$ ..., UPA... :  $\mu\text{PA}$ ..., UPC... :  $\mu\text{PC}$ ,  
UPD... :  $\mu\text{PD}$ ...

## NOTE:

- Items with no part number and no description are not stocked because they are seldom required for routine service.
- Items marked with \* are not stocked since they are seldom required for routine service. Some delay should be anticipated when ordering these items.
- Due to standardization, parts with part numbers (6-AAA-AAA-XX or 6-AAA-AAA-X) may be different from those used in the set.

## CAPACITORS:

All capacitors are in  $\mu\text{F}$ . Common capacitors are omitted. Refer to the following lists for their part numbers.  
MF:  $\mu\text{F}$ , PF:  $\mu\text{F}$ .

## RESISTORS

All resistors are in ohms. Common 1/4W, 1/8W and 1/16W carbon resistors are omitted. Refer to the following lists for their part numbers.

F : nonflammable

## COILS

MH : mH, UH :  $\mu\text{H}$

The components identified by shading and mark  $\Delta$  are critical for safety.  
Replace only with part number specified.

## SEMICONDUCTORS

In each case, U :  $\mu$ , for example:  
UA... :  $\mu\text{A}$ ..., UPA... :  $\mu\text{PA}$ ..., UPC... :  $\mu\text{PC}$ ,  
UPD... :  $\mu\text{PD}$ ...

## ELECTRICAL PARTS

Ref.No.	Part No.	Description			
R459	1-214-872-00	METAL	2.2K	1%	1/2W
R460	1-214-872-00	METAL	2.2K	1%	1/2W
R461	1-214-905-00	METAL	47K	1%	1/2W
R462	1-214-905-00	METAL	47K	1%	1/2W
R463	1-214-905-00	METAL	47K	1%	1/2W
R464	1-214-905-00	METAL	47K	1%	1/2W
R465	1-214-929-00	METAL	470K	1%	1/2W
R466	1-214-864-00	METAL	1K	1%	1/2W
R467	1-214-882-00	METAL	5.6K	1%	1/2W
R468	1-214-870-00	METAL	1.8K	1%	1/2W
R469	1-214-816-00	METAL	10	1%	1/2W
R470	1-214-886-00	METAL	10K	1%	1/2W
R471	1-214-888-00	METAL	10K	1%	1/2W
R472	1-214-913-00	METAL	100K	1%	1/2W
R473	1-214-880-00	METAL	4.7K	1%	1/2W
R474	1-214-880-00	METAL	4.7K	1%	1/2W
R476	1-214-875-00	METAL	3K	1%	1/2W
R477	1-214-854-00	METAL	390	1%	1/2W
R478	1-214-860-00	METAL	680	1%	1/2W
R479	1-214-880-00	METAL	4.7K	1%	1/2W
R487	1-214-136-00	METAL	1.5K	1%	1/4W
R488	1-214-136-00	METAL	1.5K	1%	1/4W
R489	1-214-108-00	METAL	100	1%	1/4W
R501	1-214-108-00	METAL	100	1%	1/4W
R502	1-214-108-00	METAL	100	1%	1/4W
R503	1-206-463-00	METAL	10	5%	2W F
R504	1-206-463-00	METAL	10	5%	2W F
R505	1-214-888-00	METAL	10K	1%	1/2W
R506	1-214-888-00	METAL	10K	1%	1/2W
R507	1-214-888-00	METAL	10K	1%	1/2W
R508	1-214-888-00	METAL	10K	1%	1/2W
R509	1-214-872-00	METAL	2.2K	1%	1/2W
R511	1-214-880-00	METAL	4.7K	1%	1/2W
R512	1-214-872-00	METAL	2.2K	1%	1/2W
R513	1-212-946-00	FUSIBLE	3.3	5%	1/2W F
R514	1-212-946-00	FUSIBLE	3.3	5%	1/2W F
R515	1-212-998-00	FUSIBLE	470	5%	1/2W F
R516	1-212-998-00	FUSIBLE	470	5%	1/2W F
R528	1-206-458-00	METAL	6.2	5%	2W F
R529	1-206-458-00	METAL	6.2	5%	2W F
R601	1-214-864-00	METAL	1K	1%	1/2W
R602	1-214-864-00	METAL	1K	1%	1/2W
R651	1-214-864-00	METAL	1K	1%	1/2W
R652	1-214-864-00	METAL	1K	1%	1/2W
R901	1-214-877-00	METAL	3.6K	1%	1/2W

## ELECTRICAL PARTS

Ref.No.	Part No.	Description			
R902	1-214-878-00	METAL	3.9K	1%	1/2W
R903	1-214-870-00	METAL	1.8K	1%	1/2W
R904	1-214-872-00	METAL	2.2K	1%	1/2W
R905	1-214-888-00	METAL	10K	1%	1/2W
R951	1-214-877-00	METAL	3.6K	1%	1/2W
R952	1-214-878-00	METAL	3.9K	1%	1/2W
R953	1-214-870-00	METAL	1.8K	1%	1/2W
R954	1-214-872-00	METAL	2.2K	1%	1/2W
R955	1-214-888-00	METAL	10K	1%	1/2W
RT401	1-224-247-XX	RES, ADJ, METAL GLAZE 100			
RT451	1-224-247-XX	RES, ADJ, METAL GLAZE 100			
RV401	1-228-605-00	RES, VAR, CARBON 100K/100K			
RV451	1-228-605-00	RES, VAR, CARBON 100K/100K			
RV901	1-228-606-00	RES, VAR, CARBON 10K/10K			
RV902	1-228-606-00	RES, VAR, CARBON 10K/10K			
RV951	1-228-606-00	RES, VAR, CARBON 10K/10K			
RV952	1-228-606-00	RES, VAR, CARBON 10K/10K			
RV1101	1-228-604-00	RES, VAR, CARBON 100K/100K			
RY401	1-515-323-00	RELAY			
S401	1-554-096-00	SWITCH, SLIDE (WITH PLUNGER)			
S402	1-554-097-00	SWITCH, SLIDE (WITH PLUNGER)			
S403	1-554-096-00	SWITCH, SLIDE (WITH PLUNGER)			
S404	1-554-096-00	SWITCH, SLIDE (WITH PLUNGER)			
S405	1-554-096-00	SWITCH, SLIDE (WITH PLUNGER)			
S406	1-554-097-00	SWITCH, SLIDE (WITH PLUNGER)			
S407	1-554-097-00	SWITCH, SLIDE (WITH PLUNGER)			
S408	1-554-097-00	SWITCH, SLIDE (WITH PLUNGER)			
S409	1-554-093-00	SWITCH, SLIDE (REMOTE TYPE)			
S410	1-554-094-00	SWITCH, SLIDE (REMOTE TYPE)			
S411	1-554-095-00	SWITCH, SLIDE (REMOTE TYPE)			
S901	1-554-092-00	SWITCH, PUSH (REMOTE TYPE)			

S1101 1-554-089-00 SWITCH, ROTARY SLIDE  
S1102 1-554-116-00 SWITCH, KEY BOARD

T1101 1-447-874-00 (US) TRANSFORMER, POWER  
T1102 1-447-874-00 (REF. 100) TRANSFORMER, POWER

## NOTE:

- Items with no part number and no description are not stocked because they are seldom required for routine service.
- Items marked \* are not stocked since they are seldom required for routine service. Some delay should be anticipated when ordering these items.
- Due to standardization, parts with part numbers (Δ-ΔΔΔ-ΔΔΔ-XX or Δ-ΔΔΔΔ-ΔΔΔ-X) may be different from those used in the set.

## CAPACITORS:

- All capacitors are in μF. Common capacitors are omitted. Refer to the following lists for their part numbers.

## RESISTORS

- All resistors are in ohms. Common 1/4W, 1/2W and 1/6W carbon resistors are omitted. Refer to the following lists for their part numbers.

- F: nonflammable

## COILS

- MMH: mH, UH: μH

The components identified by shading and mark A are critical for safety. Replace only with part number specified.

## SEMICONDUCTORS

In each case, U: μ, for example:  
UA...: μA..., UPA...: μPA..., UPC...: μP  
UPD...: μPD...



## SUPPLEMENT

File this supplement with the service manual.

US Model

No. 1  
March, 1983

### ©SAFETY CHECK-OUT (US Model)

After correcting the original service problem, perform the following safety check before releasing the set to the customer:

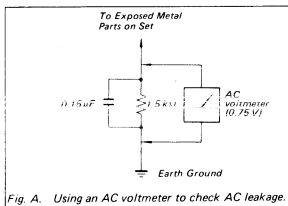
Check the antenna terminals, metal trim, "metallized" knobs, screws, and all other exposed metal parts for AC leakage. Check leakage as described below.

#### LEAKAGE TEST

The AC leakage from any exposed metal part to earth ground and from all exposed metal parts to any exposed metal part having a return to chassis, must not exceed 0.5 mA (500 microamperes). Leakage current can be measured by any one of three methods.

1. A commercial leakage tester, such as the Simpson 229 or RCA WT 540A. Follow the manufacturers' instructions to use these instruments.
2. A battery-operated AC milliammeter. The Data Precision 245 digital multimeter is suitable for this job.

3. Measuring the voltage drop across a resistor by means of a VOM or battery-operated AC voltmeter. The "limit" indication is 0.75 V, so analog meters must have an accurate low-voltage scale. The Simpson 250 and Sanwa SH-63Trd are examples of a passive VOM that is suitable. Nearly all battery operated digital multimeters that have a 2V AC range are suitable. (See Fig. A)



© The following parts have been added as the safety-related components.

C505	△ 1-125-288-00	ELECT (BLOCK)	100 MF 20% 100V
C506	△ 1-125-288-00	ELECT (BLOCK)	100 MF 20% 100V
C515	△ 1-123-895-00	ELECT	2200 MF 20% 50V
C516	△ 1-123-895-00	ELECT	2200 MF 20% 50V
C517	△ 1-123-895-00	ELECT	2200 MF 20% 50V
C518	△ 1-123-895-00	ELECT	2200 MF 20% 50V

The components identified by shading and mark △ are critical for safety. Replace only with part number specified.

## SONY®

### SERVICE MANUAL

Sony Corporation  
Consumer Products Group  
Technical Support Dept.

9-950-876-82

English  
83C0640-1  
Printed in Japan  
© 1983